

# Multi-Agency Coordination Groups

---

**MAC**

**2007**

# Comparison of Terms & Concepts Related to MAC

Incident Command System	Unified Command	MAC	EOCs
<p>The system used to direct all operations at the incident scene. The IC is located at the ICP at the incident scene.</p>	<p>An application of ICS used when there is more than 1 agency with jurisdiction. Agencies work together through their designated ICs at a single ICP to establish a common set of objectives &amp; strategies, and a single IAP.</p>	<p>An activity or a formal system used to <i>coordinate resources &amp; support between agencies or jurisdictions</i>. A MAC Group functions within the MACS. MACS interact with agencies or jurisdictions <u>not with incidents</u>. MACS are useful for regional situations. A MACS can be established at a jurisdictional EOC or a separate facility.</p>	<p>EOCs are used in varying ways at all levels of government &amp; within private industry to provide coordination, direction, and control during emergencies. County EOC facilities can be used to house MACS activities as determined by agency or jurisdiction policy.</p>

# Regional Multi-Agency Coordination (MAC) Group Mission Statement

---

- The mission of the Regional MAC Group is to function as an All Hazards coordination entity to support local Incident Command through the local EOC(s) and the State EOC. The primary function of the Regional MAC Group is to assist with the organization of regional resources needed to respond to a catastrophic incident, or an event involving Weapons of Mass Destruction (WMD) and to prevent or mitigate additional attacks.

# MAC

---

The Regional MAC Group provides a short-term regional coordination element, coordinated through the State Emergency Operations Center (SEOC). Its functions are performed during the initial stages of disaster management, until requested to transition or demobilize. It provides the following minimum functions for catastrophic incidents:

- **ACTIVATE** in support of the incident,
- **ASSESS** the situational impact and need for resources,
- **REPORT** situational awareness to the SEOC,
- **COORDINATE** the regional response effort, and
- **ORGANIZE** regional assets to augment local resources in coordination with local EOCs.

# MAC

---

**The MAC Group is not designed or intended to replace tactical Incident Command, County Emergency Operations, or function as an Incident Management Team (IMT).**

# MAC

---

- SERT determines the need for Regional Coordination
- All-Hazards for Catastrophic incidents
- Regional MAC Group(s) may be implemented by a mission-tasking message and subsequent Gubernatorial Executive Order
- Any regional coordinating structures will be integrated at the regional level and will operate under the authority and direction of the State Emergency Operations Center (SEOC).

# MAC

---

Once activated the Regional MAC Group has the responsibility to coordinate any in-region assets as necessary to support the incident or local needs. All resource tasking will be performed in response to local EOC requests to the SEOC using the State Resource Management System ( EM-Constellation, etc).

- The group will be responsible for:
- Maintaining up-to-date lists of regional specialty teams and other regional response assets available for deployment
- Tracking the availability and status of tactical and support resources
- Developing and reporting regional situational awareness and/or criminal intelligence;
- Coordinating regional resource deployment and demobilization
- Coordination of regional public information with the JIC and SEOC.

**MAC COORDINATOR**

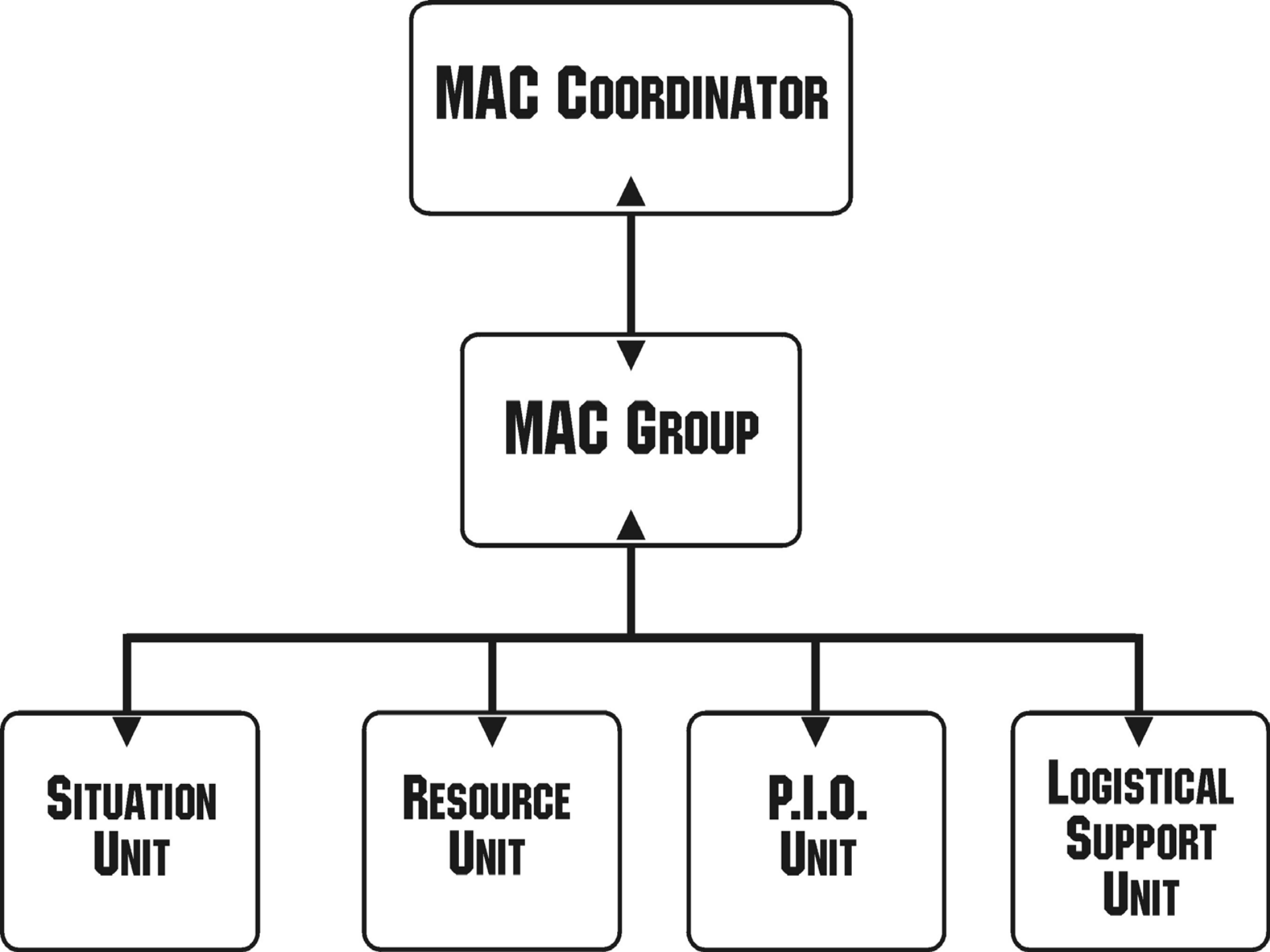
**MAC GROUP**

**SITUATION  
UNIT**

**RESOURCE  
UNIT**

**P.I.O.  
UNIT**

**LOGISTICAL  
SUPPORT  
UNIT**



# MAC

---

The size and function of the Regional MAC Group will be determined based on the complexities of the incident (s).

- Coordinate during the first 72 hours
- If the incident can be contained, Regional MAC Group may scale down or demobilize completely.
- The SEOC may establish Unified Area Command (UAC) and transfer personnel, authority, or both, to the incident location. In this case, the Regional MAC Group may be absorbed as a component of the UAC.

# *Regional Asset Deployment Philosophy*

---

Regional assets will be deployed, as needed, to augment local response consistent with direction provided by the State's Comprehensive Emergency Management Plan (CEMP).

The MAC Group will also coordinate deployment of in-region assets in support of local EOCs in accordance with existing plans.

Requests for out-of-region assets must be coordinated through the SEOC.

All resource requests are submitted to the State EOC and must originate from a County EOC or SEOC authorized source. The SEOC will determine where the request is assigned for fulfillment, including which Regional MAC Group(s) will coordinate with local Emergency Management during resource deployment.

# MAC Group Functions

Resource Request  
(Coordination & Flow):

