
FLORIDA STATE ANNEX



to the
PRESIDENT'S Federal Response Plan Supplement
FEMA Region 4

This State Annex to the President's Federal Response Plan Supplement can be accessed on the FEMA Response and Recovery/Assessment and Analysis Branch Intranet site, along with other State Annexes and the Quick Reference Guide to Regional Disaster Operations: <http://hq.fema.gov/>

Table of Contents

SectionPage No.

I.	Introduction.....	FL-1
II.	Organization/Facilities	FL-10
III.	Emergency Teams, Personnel, and Other Resources	FL-14
IV.	ESF/Other Functional Counterparts	FL-15
V.	State Response and Recovery Actions.....	FL-17
VI.	Incident-Specific Response Considerations	FL-18
	Internet Information Sources	FL-20
	Acronyms and Abbreviations.....	FL-21

SECTION I: INTRODUCTION

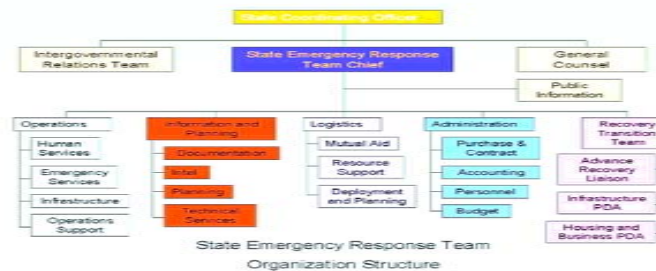
PURPOSE OF STATE ANNEX

This annex to the President’s Federal Response Plan supplement is intended to describe the concept of operations the State of Florida will follow to ensure that the state is prepared to respond to emergencies, recover from them, and mitigate against their impacts. Additionally, this annex identifies operating facilities, response and recovery teams and resources, and the state agency counterparts to Federal emergency support functions. This annex is not intended to describe the full scope of disaster preparedness, response, recovery and mitigation. However, it will illustrate the concept of emergency operations used in Florida and provide an overview of local, state and federal government roles. For a more in depth analysis of Florida emergency operations, please refer to the State of Florida Comprehensive Emergency Management Plan (SCEMP).

STATE CONCEPT OF OPERATIONS

Chapter 252 of the Florida Statutes is the enabling legislation that creates the state emergency program. The Department of Community Affairs’, Division of Emergency Management is designated as the lead agency responsible for management, administration, and coordination of response and recovery efforts during an emergency or disaster.

The State Comprehensive Emergency Management Plan (SCEMP) describes the methods by which the State will mobilize resources and conduct response and recovery activities. DEM follows the unified functional Incident Command System structure. It has 12 ESFs, consistent with the Federal Response Plan, as well as a 13th ESF for Military Support, a 14th ESF for Public Information, a 15th ESF for Volunteers and Donations, a 16th ESF for Law Enforcement, and a 17th ESF for Animal Protection and Agriculture. The State Emergency Response Team (SERT) consists of representatives of more than 50 state agencies, voluntary organizations, and business groups (see organization chart below). Additionally, the emergency management agencies of unimpacted counties, municipalities, special districts and school districts assist in disaster response and recovery through statewide mutual aid agreements.



**STATE CONCEPT
OF OPERATIONS**
(Continued)

The Division operates the State Warning Point, a 24-hour emergency communications center that provides Florida with a single communications point for reporting incidents. The State Warning Point disseminates warnings to local, state and federal government officials of potential or unfolding emergencies, and collects information from the affected areas pertaining to potential or ongoing emergencies or disasters.

Upon exhausting all State resources Federal assistance may be requested by the Governor for a Presidential Disaster Declaration funded through the Disaster Relief Fund and in accordance with the Stafford Act.

The State Emergency Operations Center maintains direction and control while serving as a central clearinghouse for disaster related information and request for assistance from local governments. After an area has been impacted by a major disaster, the state continues to provide support to local communities through response and recovery operations. Recovery assistance includes community relations teams, coordination with unmet needs committees, and coordination with other state and local agencies. In the case of presidentially declared disasters, recovery efforts from a Disaster Field Office are jointly coordinated by federal, state and local governments.

**RESPONSE
CONSIDERATIONS**

The Division of Emergency Management has divided the state into seven operational areas (as seen in the map below) that are staffed by full time Division personnel (Area Coordinators). The Area Coordinators act as on scene liaisons between local government officials and the State Emergency Operations Center to ensure that local needs are addressed and resources are provided.

Response is carried out at the local government level with state assistance as required. State responders assume appropriate roles within the local government's emergency operational structure.



**STATE/LOCAL
CONCERNS**

Florida's counties and local jurisdictions are fiercely interested in managing their own affairs and are wary of unwarranted State Interference. State and local jurisdictions are under varying degrees of economic restraint, and financial resources are sometimes severely limited.

SECTION I: INTRODUCTION (continued)



STATE SITUATION

The State of Florida is a southward jutting peninsula separating the Atlantic Ocean from the Gulf of Mexico covering some 59,928 square miles. The state is unique in the fact that it has 8,426 miles of tidal shorelines. Elevations range from 345 feet to sea level. The climate of Florida is basically humid subtropical with the exception of the southern tip of the peninsula and the Keys, which are tropical. Florida has an annual rainfall of approximately 55 inches.

Hazards to which the State of Florida is vulnerable include:

Tornadoes. The state is vulnerable to the effects of tornadoes, and the other severe weather associated with thunderstorms including damaging winds, hail, dangerous lightening and flooding.

Hurricanes. Vulnerable to storms that arise in the Atlantic Ocean, Caribbean Sea and the Gulf of Mexico, Florida has been impacted by more hurricanes than any other state. Additionally, 85% of Florida's population live within 10 miles of the coast and no area within the state is more than 100 miles of the coast. Hurricane damages come in the form of high winds, wave action, storm surge and flooding. Inland river flooding is also a consequence of hurricanes.

Flooding. Flooding impacts the state in many different forms. Florida serves as a drainage basin for numerous rivers flowing out of Alabama and Georgia. Thus, main river flooding and its effects are a major concern. Flash flooding in both urban and non urban areas occurs on a regular basis, especially during the summer rainy season. Dam failure also poses a significant threat. Florida is also subject to "sheet flooding" which is unique to the state. Much of Florida's interior land area lies at sea level or below. Due to this unique topography, water tends to collect and pool over vast areas of land and slowly spreads outward impacting the surrounding areas.

Droughts. Droughts are a regular part of Florida's climatic cycles. Florida is recently emerging from a four year drought. This drought had severe impacts on the state's agriculture and livestock industries. Additionally, the water levels in the Floridan aquifer (Florida's main freshwater supply), Lake Okeechobee, and numerous other rivers, lakes and streams suffered historical record lows. These record low water levels endangered numerous municipal water supplies as well as causing hundreds of private wells to go dry.

**STATE
SITUATION**
(continued)

Fires. Over the past few years Florida has seen a significant increase in wildland fires. These fires have caused tremendous agricultural, timber and structural losses. Dry foliage, terrain and climatic conditions for fires are elements of nature; however, most fires are caused by man. Increased risk of loss of life and property is presented where urban areas interface with forested areas. Structure fires are a common occurrence throughout the state. In some cases these structure fires may be severe enough to lead to evacuation and sheltering of individuals in the surrounding areas.

Fixed Nuclear Facilities. Three nuclear power plants (Turkey Point, Crystal River and St. Lucie) operate in Florida. Florida has response plans for these facilities as well as for the Farley plant in Alabama. In all, thirty counties fall within the 50 mile Emergency Planning Zone (EPZ) of these facilities.

Severe Heat and Cold. Florida's unique climatic patterns make it vulnerable to both severe heat and cold. Both of these climatic extremes pose significant threats to the citrus and other agricultural industries. Additionally, these extremes are a significant threat to human and livestock populations.

Hazardous Materials. Individuals, businesses and, government agencies in Florida generate, store, and transport hazardous materials throughout the state.

Nuclear Threat/ Attack. As long as nuclear weapons exist, nuclear attack is a possibility. An attack upon the United States could subject all counties to radioactive fallout. According to the Department of Defense and the Federal Emergency Management Agency (FEMA), Florida has several probable target areas. This could subject many counties to the direct effects of nuclear weapons. No county can expect immunity from the direct or indirect effects.

Energy Emergency. Due to Florida's tropical and sub-tropical climate, energy emergencies pose a very realistic threat. An energy emergency exists when there is an acute shortage of required energy resources to the extent that necessary services are threatened and the protection of public health is imperiled. A general energy emergency may involve all facets of multi hazard planning to include alert and notification, response, evacuation, and sheltering of certain populations.

Mass Migration. Florida's proximity to Cuba and numerous Caribbean nations makes its shores the primary target for many illegal immigrants. The state works directly with the federal and local governments to assist in coordination during mass migration events.

Mass Casualties/Mass Fatalities. Many of the hazards listed here may result in mass casualties and even mass fatalities. This would require special attention from the health care facilities, medical examiners, and mortuary authorities.

**STATE
SITUATION**
(Continued)

Medical Debris. Medical debris has been discovered in many of the state's landfills as well as along the state's expansive coastline. DEM works directly with the State Department of Health and Department of Environmental Protection to ensure that these contaminants are controlled and contained.

Airplane Crash. With numerous commercial and military airports within its borders, and being a popular tourist destination. All parts of Florida are susceptible to crashes of commercial, private, or military aircraft.

Kennedy Space Center. Florida faces the unique threat of hazards resulting from space vehicles being launched from Kennedy Space Center.

Railroad Accidents. A railroad accident could occur along Florida's expansive railroad system. Florida's railroad system provides both cargo and passenger service.

Coastal Red Tide. Red Tide is caused by a toxic concentration of microscopic algae organisms which turn coastal waters rusty red or yellow, and irritates the skin and eyes of coastal occupants. It collects in oysters, clams, and scallops, making them unsafe to eat. This disease destroys seafood and has a major economic impact on commercial fishing and tourism.

Terrorism. Florida's large metropolitan areas, nuclear facilities, and numerous military installations make it a target for both domestic and foreign terrorist activities. However, all areas of Florida remain vulnerable to terrorist activities.

Foreign/Domestic Livestock Diseases. Florida's large livestock population makes it highly vulnerable to livestock diseases and epidemics that could be potentially devastating to the states livestock industry. Additionally, Florida's large tourism industry increases the chances of foreign animal diseases being introduced to the state through its many points of entry.

Other Hazards. Other hazards include, but are not limited to crop diseases, insect damage, oil spills, school bus accidents, major traffic accidents, severe wind storms, tsunamis, and mosquito borne illnesses pose a formidable threat to Florida.

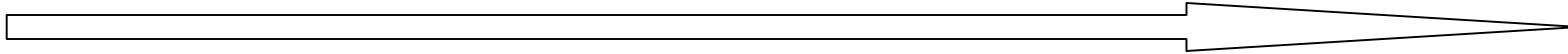
**STATE
SITUATION**
(Continued)

Demographics		Comments/References
Population	15,982,378 (84.8 % urban, 15.2% non urban)	Increase of 23.5% from 1990. 17.6% of the population is over 65 (U.S. average is 12.4 %) Florida also has a large tourist and transient population that must be considered in response and recovery actions.
Special Needs Population		A Special Needs Task Force has been created to determine statewide needs.
Population Density	296.4 persons per square mile.	U.S. average: 79.6 persons per square mile.
Ethnic Makeup	65% White 16.8% Hispanic 14.6% Black 1.7% Asian 0.3% Native American	
Secondary Languages	Spanish , Creole and a variety of Asian and Native American languages	
Median Per Capita Income	\$32,877.00	1997 estimate, U.S. Census; over 14.4% of population in poverty.
No. of Flood Prone Structures in State		
No. of Flood Insurance Policies in State	1,729,244	40.5% of flood insurance policies nationally and 80.5% of the policies within FEMA Region IV.

SECTION I: INTRODUCTION (continued)



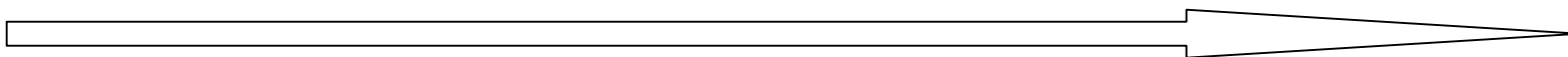
SECTION II: ORGANIZATION/FACILITIES



Organization	Location	Contact	Comments
State Government			
Office of the Governor	State Capitol Tallahassee, Florida	Jeb Bush, Governor (R) Frank Brogan, Lt. Governor (R) Phone: (850) 488-4411 Fax: (850) 487-0801 Internet: www.myflorida.com	Governor's term is 4 years with two-term limit; next election November 2002.
State Legislature - Senate: 40 members - Assembly: 120 members	State Capitol Tallahassee, Florida	Phone: (850) 488-1234 Internet: www.leg.state.fl.us	Legislative session begins in March and runs for 60 days. Special sessions may be called if circumstances warrant.
Congressional Delegation - Senate: 2 members - House: 23 members		Senate Switchboard: (202) 224-3121 Internet: www.senate.gov House Switchboard: (202) 225-3121 Internet: www.house.gov	
Governor's Liaison in Washington, DC		Stephanie Kopelousos (703) 519-1833 (703) 509-0186	

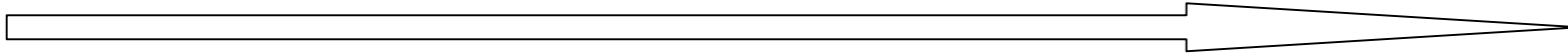
SECTION II: ORGANIZATION/FACILITIES (continued)

[Note: Will insert SEOC directional map and floor plan.]



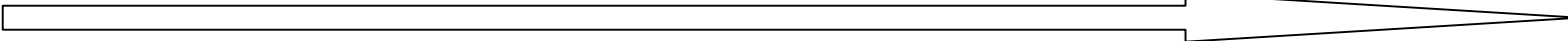
Organization	Location	Contact	Comments/References
State Emergency Management Agency			
Division of Emergency Management	Sadowski Building 2555 Shumard Oak Boulevard Tallahassee, Florida 32399-2100	W. Craig Fugate, Interim Director Mike DeLorenzo, SERT Chief Phone: (850) 413-9969 24 hour POC: (850) 413-9900 1-800-320-0519 Internet: www.floridadisaster.org	During disaster/emergency, DEM Director serves as Governor's primary POC, reporting directly to Governor. DEM organization follows modified ICS structure (see organization chart page FL-1)
State EM Area/District Offices	N/A		
State Emergency Operations Center			
Primary SEOC	State Emergency Operations Center Rudd Building 2575 Shumard Oak Boulevard Tallahassee, Florida 32399-2100	Phone: (850) 413-9900 Fax: (850) 488-1016 24 hour POC: (850) 413-9900 1-800-320-0519	SEOC operates on an as-needed basis (24/7). SEOC can accommodate FDEM staff, as well as staff from all 17 ESFs and FEMA. The State Warning Point is also located in the SEOC.
Alternate SEOC	Broward County Emergency Operations Center 201 Northwest 84 Avenue Plantation, Florida 33324	24 hour POC: (850) 954-765-5100	
Mobile/Other Facilities	(2) Tactical Unit Support Trailers		May be deployed statewide to assist in Response/Recovery efforts. Each trailer has a full array of computer and communications equipment.
Other State Response Organizations			
State Emergency Response Commission	2555 Shumard Oak Boulevard Tallahassee, Florida 32399-2100	Eve Rainey, Bureau Chief, Compliance Planning and Support Phone: (850) 413-9970	

SECTION II: ORGANIZATION/FACILITIES (continued)



Facility	Location	Contact	Comments/References
Disaster Facilities (may be pre-identified)			
Forward Facilities	Identified as needed.		
Points of Arrival			
State Staging Areas	56 pre-determined sites statewide.		
BSIs/Other			
Joint Information Center	Identified as needed (usually SEOC)		
Federal Disaster Field Office	Situation specific in or near disaster area.		FEMA coordinates location of DFO with State.
FEMA Mobile Emergency Response Support (MERS)	Thomasville, Georgia		

SECTION II: ORGANIZATION/FACILITIES (continued)



DEM Organizational Relationships	Entity	Comments/Interaction
Other State Agencies	26 major State agencies	
Counties	67 Counties	Each county has a designated emergency manager, however several share other duties within the county.
Municipalities		Several local municipalities have their own emergency managers.
Project Impact Communities	Broward County/Deerfield Beach, Escambia County, Tampa Bay Region (Pasco, Pinellas, Hillsborough, and Manatee Counties), Duval County/Jacksonville, Volusia, Brevard, and Miami-Dade County.	Each community has its own Project Impact Coordinator.
Federally Recognized Tribal Governments	(2) Miccosukee and Seminole.	If tribe cannot satisfactorily resolve emergency, it should issue a Local Emergency resolution to the associated county/counties for resolution of problem.
Voluntary Organizations	FL VOAD; CAP-FL Wing; American Red Cross; Salvation Army; FL Nurses Association; FL Association of Hospitals and Health Systems; FL Veterinary Medical Association; United Blood Services; Amateur Radio Emergency Services (ARES); Radio Amateur Civil Emergency Services (RACES); Military Affiliated Radio System (MARS)	
Adjoining States	2 adjoining states: Alabama and Georgia.	FL SEOC will communicate with SEOCs in adjoining States as needed in interstate disasters.
Private Sector	Commercial broadcasters: Radio/TV Sprint Florida Power and Light Company	

SECTION III: EMERGENCY TEAMS, PERSONNEL, AND OTHER RESOURCES

Emergency Teams	Location	Contact	Comments/References
SEOC Staff	SEOC 2575 Shumard Oak Boulevard Tallahassee, Florida 32399-2100	FL DEM Phone: (850) 413-9900 Fax: (850) 488-1016	DEM provides core staffing; additional staffing obtained from other State agencies. If SEOC operational 24 hours, 12 hour shifts established.
Advance Team (A-Team)	SEOC		A- Team members are FDEM staff from Operations, Logistics, and Intel(ESF 5) that are deployed to assist impacted counties with response operations..
Forward State Emergency Response Team (F-SERT)	SEOC		For major events that impact a large geographic area of the state, a F-SERT may be deployed to provide on the ground coordination of response and recovery activities within the impacted region.
Preliminary Damage Assessment Team	SEOC		Teams are deployed as necessary.
Rapid Impact Assessment Team (RIAT)	SEOC		RIAT Teams are highly mobile and self sufficient assessment teams that evaluate critical infrastructure damage immediately following a disaster.
Rapid Response Team (RRT)	SEOC		RRT consists of state and local emergency workers who are deployed into the impacted area to augment local operational capabilities.
Community Relations Team	SEOC		Teams deploy as necessary.
Situation Report Team	SEOC		Generated by FL DEM Information and Planning Branch.
Urban Search and Rescue	Miami-Dade County and City of Miami.		ESF #9 – National Asset
National Guard Civil Support Team (for WMD)	Camp Blanding		Teams deploy as necessary.
National Guard Computer Emergency Response Team	Camp Blanding		Teams deploy as necessary

SECTION III: EMERGENCY TEAMS, PERSONNEL, AND OTHER RESOURCES (continued)

Personnel	Designation	Comments/References
State Coordinating Officer	Appointed by Governor	Generally DEM Director.
Governor's Authorized Representative (GAR)		Generally DEM Director.
Public Information Officer		DEM staff.
State IFG Coordinator	Appointed by GAR	
Public Assistance Officer		Generally from DEM.
State Hazard Mitigation Officer		Works closely with Federal Hazard Mitigation Officer.
State Historic Preservation Officer		
State Donations Coordinator		ESF 15 Volunteers and Donations.
FEMA State Liaison	Rostered out of FEMA Region IV.	Deploys upon State request.

Other Resources	Description
Communications Capabilities	Current telecommunications systems; computers; State and local Law Enforcement radio and dispatch systems; NAWAS; ESATCOM; ARES; RACES; Florida Crime Information System; Hot Ring Down Communication System.
Information Systems	Florida uses Lotus Notes EM2000™ (emergency management program) and the Hurrevac storm tracking program. DEM also has full time staff for meteorology and Geographic Information Systems (GIS).
Intrastate Mutual Aid	All Florida counties are participants in the State Wide Mutual Aid Agreement.
Interstate Mutual Aid	Florida is an EMAC-member State. In addition, Governor may enter into mutual aid arrangements with other States.
DEM Budget	
State Disaster Relief Fund/Emergency Management Trust Fund	

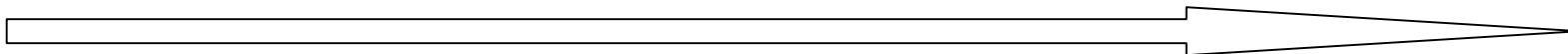
SECTION IV: ESF/OTHER FUNCTIONAL COUNTERPARTS

	ESF/Support Function	Counterpart State Agency	Implementation Considerations
Federal ESFs			
1	Transportation	Department of Transportation	
2	Communications	Department of Management Services, Division of Communications	
3	Public Works and Engineering	Department of Transportation	
4	Firefighting	Department of Insurance, State Fire Marshal	
5	Information and Planning	Department of Community Affairs, Division of Emergency Management	
6	Mass Care	Department of Business and Professional Regulation	
7	Resource Support	Department of Management Services, Division of Purchasing	
8	Health and Medical Services	Department of Health	
9	Search and Rescue	Department of Insurance, State Fire Marshal	
10	Hazardous Materials	Department of Environmental Protection	
11	Food and Water	Department of Agriculture	
12	Energy	Public Service Commission	
Additional State ESFs			
13	Military Support	Department of Military Affairs, Florida National Guard	
14	Public Information	Department of Community Affairs, Division of Emergency Management	
15	Volunteers and Donations	Florida Commission on Community Service	
16	Law Enforcement	Department of Law Enforcement	
17	Animal Protection and Agricultural Issues	Department of Agriculture	

SECTION V: STATE RESPONSE AND RECOVERY ACTIONS

Function	Action	Comments/References
Pre-Event		
Ongoing Monitoring	County EM Coordinators responsible for notification to State Warning Point (SWP) of local emergencies.	After notification, the SWP operator may contact the on-call Duty Officer who will determine if further notification or any state action is needed.
Planning	FL DEM coordinates statewide planning initiatives.	
Initial Response		
Alert and Notification		Appropriate DEM and ESF staff are notified of the situation.
Activation and Deployment	The State Emergency Operations Center is activated by the SERT Chief.	Levels of activation: 3. Monitoring 2. Partial Activation * 1. Full Activation * ESF activation dictated by type of emergency.
Initial Assessment	DEM has primary responsibility for assembling and activating PDA teams.	
Declaration (Gubernatorial, Presidential)	When Governor issues State of Emergency proclamation, DEM Chief initiates State response as set forth in SCEMP.	Only Governor or Acting Governor can originate request for Presidential Declaration.
Continuing Response		
Request for Federal Assistance	May be triggered when Governor issues State of Emergency proclamation.	SERT Chief initiates Request for Federal Assistance as set forth in SCEMP.
Information Collection, Analysis, and Dissemination	FL uses Lotus Notes EM2000™ (emergency management program).	ESF 5 (Intel) will collect, analyze, disseminate information to SEOC staff. The Public Information Officer (PIO) will provide information to the public via the news media.

SECTION V: STATE RESPONSE AND RECOVERY ACTIONS (continued)

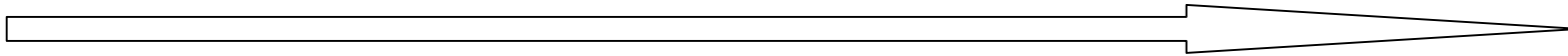


Function	Action	Comments/References
Reporting, GIS	Provided by Florida Division of Emergency Management	
Resources Coordination; Tracking	FL uses EM2000™ (emergency management program).	
Receiving/Distribution	Requirements for Federal support, standby contracts.	
Sheltering	Provided by the American Red Cross according to the SCEMP.	
Evacuation	Coordinated by local Law Enforcement.	
Debris Management	Generally coordinated by FDOT.	
Recovery		
Human Services	Coordinated through Human Services Branch Chief.	
Infrastructure Support	Coordinated through Infrastructure Branch Chief.	
Deactivation	As Directed by the SERT Chief.	
Mitigation		
Local Mitigation Strategy	The Local Mitigation Strategy is broad based, pre-disaster planning that provides highly effective and analytical methods of integrating hazard mitigation into routine policy decision making as well as the capital improvement programs of the local governing bodies.	99% of Florida cities have agreed to voluntarily participate in this program.
Mitigation Programs	Hazard Mitigation Grant Program; Flood Mitigation Assistance Program; Emergency Management Preparedness and Assistance Trust Fund; Community Development Block Grant Fund.	

SECTION VI: INCIDENT-SPECIFIC RESPONSE CONSIDERATIONS

Hazard	Incident-Specific Response Considerations
Floods	As directed in SCEMP, Standard Operating Procedures, and Emergency Response Guides.
Hurricanes	As directed in SCEMP, Standard Operating Procedures and Emergency Response Guides.
Foreign Animal Disease	As directed in SCEMP, Standard Operating Procedures and Emergency Response Guides.
Severe Weather	As directed in SCEMP, Standard Operating Procedures and Emergency Response Guides.
Hazardous Materials Spills	As directed in SCEMP, Standard Operating Procedures and Emergency Response Guides.
Radiological Incidents	As directed in SCEMP, Standard Operating Procedures and Emergency Response Guides.
Terrorism	As directed in SCEMP, Standard Operating Procedures and Emergency Response Guides.
Tornadoes	As directed in SCEMP, Standard Operating Procedures and Emergency Response Guides.
Mass Migration	As directed in SCEMP, Standard Operating Procedures, and Emergency Response Guides.
Drought	As directed in SCEMP, Standard Operating Procedures and Emergency Response Guides.
Severe Heat/Cold	As directed in SCEMP, Standard Operating Procedures and Emergency Response Guides.
Special Events (Super Bowl, etc.)	As directed in SCEMP, Standard Operating Procedures and Emergency Response Guides.
Kennedy Space Center	As directed in SCEMP, Standard Operating Procedures and Emergency Response Guides.

SECTION XX: SITE-SPECIFIC RESPONSE CONSIDERATIONS*OPTIONAL*



		Comments
Site		
Operator/Owner		
Location		
Facility Description		
Directions to Facility		
Demographics		
Land Use Characteristics		
County EOC(s)		
EOF Location		
JIC Location		
Staging Area Location		
Evacuation Routes		
Risk Area/Counties		
Response Considerations		
Other????		

**INTERNET INFORMATION SOURCES
SUGGESTED ADDITIONAL LINKS**

Information Source	Web Site (URL Address)	Remarks
Florida Division of Emergency Management	www.floridadisaster.org	
Local Government	www.naco.org	
County Government	www.naco.org	
State Government	www.myflorida.com www.leg.state.fl.us	Provides links to State agencies.
Federal Government	www.firstgov.gov	Provides links to all three branches of government.
Federally Recognized Indian Tribes	http://128.174.5.51/denix/Public/Native/Outreach/American	Provides U.S. map with links to tribes by State.
State Colleges, Universities, Technical Schools	http://www.flboe.org/edlinks.asp	
State Libraries	http://www.dos.state.fl.us/fgils/fl_lib.html	
Hospitals	http://www.fdhc.state.fl.us/Text/MCHQ/Health_Facility_Regulation/Hospital_Outpatient/hospital.shtml	
Voluntary Organizations	www.nvoad.org	Provides links to individual voluntary organizations.
Weather	www.weather.com www.wunderground.com	
Maps and Atlases	www.census.gov	

ACRONYMS AND ABBREVIATIONS

AFB	Air Force Base	IFG	Individual and Family Grant
ARES	Amateur Radio Emergency Services	JIC	Joint Information Center
BSI	Base Support Installation	MARS	Military Affiliated Radio Systems
CAP	Civil Air Patrol	MOU	Memorandum of Understanding
DEM	Division of Emergency Management	NAS	Naval Air Station
DFO	Disaster Field Office	NDMS	National Disaster Medical System
DRF	Disaster Relief Fund	FDOT	Florida Department of Transportation
EIO	External Information Officer	NVOAD	National Voluntary Organizations Active in Disasters
EM	Emergency Management	PDA	Preliminary Damage Assessment
EMAC	Emergency Management Assistance Compact	PIO	Public Information Officer
EMPG	Emergency Management Performance Grant	POC	Point of Contact
EOC	Emergency Operations Center	PSC	Public Service Commission
EOF	Emergency Operations Facility	RACES	Radio Amateur Civil Emergency Services
ESF	Emergency Support Function	RIAT	Rapid Impact Assessment Team
FEMA	Federal Emergency Management Agency	SEOC	State Emergency Operations Center
FOC	FEMA Operations Center		
FRP	Federal Response Plan		
GAR	Governor's Authorized Representative		
GIS	Geographic Information System		
HQ	Headquarters		