

A background map of the state of Florida, showing its geographical features and coastline. The map is rendered in a light, semi-transparent style, allowing the text to be clearly visible over it.

University of Florida GeoPlan Center: Florida Geographic Data Library

- Statewide Data Portal
- Includes Downloadable Datasets
- Over 400+ current and historic GIS layers from over 35 local, state, federal, and private agencies.
- Primarily vector data.
- www.fgdl.org

Florida Geographic Data Library

- Funded by FL Department of Transportation. Data in FGDL is used for FDOT's environmental permitting process – ETDM.
- Data is checked regularly for updates (approximately quarterly).
- Each data layer includes FGDC metadata.
- Data is harvested monthly by the Geospatial One-Stop – geodata.gov

Florida Geographic Data Library

Stats as of 6/14/2011

- 104 layers have been added (either new or updated) since Jan 1, 2011. (Approximately 25% of FGDL layers are new or updated this year.)
- Approximately 44% of FGDL layers are new or updated since Jan 1, 2010.
- Several layers checked and found to have no updates needed

FGDL Metadata Explorer

The screenshot shows a Mozilla Firefox browser window displaying the FGDL Metadata Explorer website. The browser's address bar shows the URL <http://www.fgdl.org/metadataexplorer/explorer.jsp>. The website's title is "FGDL METADATA EXPLORER: SEARCH & DOWNLOAD DATA". The page features a navigation bar with "Search" and "Browse" tabs. The "Search" tab is active, showing a search form with a dropdown menu for "Choose content theme:" (set to "<All Content Themes>"), a text input for "Optional Keyword (e.g. river):", and a "Start Search" button. Below the search form is a checkbox for "Search NSDI Clearinghouse (to search other Metadata Servers)".

SEARCH TIPS

Searches are NOT case sensitive.

For wild card characters - use %

Search results return exact matches. The search for **park** may not necessarily return "parking" or "parks". Use % for a more robust search. For example, use **park%** to search for parks.

Welcome to the FGDL Metadata Explorer

With the Metadata Explorer, you can search, browse, and download data from the **Florida Geographic Data Library (FGDL)**, a mechanism for distributing spatial (GIS) data throughout the state of Florida. The FGDL is warehoused and maintained at the University of Florida's GeoPlan Center.

SEARCHING DATA

Use the Search Form on the left to search FGDL data layers:

1. Choose a Content Theme (or choose all themes).
2. Type in a specific keyword (this is optional).
3. Press "Search"

BROWSING DATA

Use the Browse tab (on your top left) to view FGDL data layers by category.

Or View ALL Data Layers in the FGDL by clicking on the 'All' category.

If you are looking for imagery and raster data, such as DOQQs and DRGs, please see [LABINS](#).

Want to be informed when new and updated GIS layers added to FGDL? **Subscribe to the FGDL Listserve:** www.fgdl.org/updates.html

The FGDL supports the National Spatial Data Infrastructure (NSDI) through the following activities:

- Maintenance of Federal Geographic Data Committee (FGDC) compliant metadata for all data layers distributed.
- Maintenance of the FGDL Metadata Explorer, a GIS Catalog Portal, from which data can be shared, accessed, and searched by other portals and individuals free of charge.
- Participation in the [Geospatial One Stop \(GOS\)/ geodata.dov](#), with FGDL metadata records regularly harvested by GOS.
- Participation as a Clearinghouse Node in the [FGDC's Clearinghouse Registry](#).

FGDL DATA DISCLAIMER:

The Florida Geographic Data Library is a collection of Geospatial Data compiled by the University of Florida GeoPlan Center with support from the Florida Department of Transportation. GIS data available in FGDL is collected from various state, federal, and other agencies ("data sources") who are data stewards, producers, or publishers. The data available in FGDL may not be the most current version of the data offered by the data source. University of Florida GeoPlan Center makes no guarantees about the currentness of the data and suggests that data users check with the data source to see if more recent versions of the data exist.

Furthermore, the GIS data available in the FGDL are provided "as is". The University of Florida GeoPlan Center makes no warranties, guaranties or representations as to the truth, accuracy or completeness of the data provided by the data sources. The University of Florida GeoPlan Center makes no representations or warranties about the quality or suitability of the materials, either expressly or implied, including but not limited to any implied

Done

FGDL Metadata Explorer

FGDL Search/ Download Data - Mozilla Firefox

File Edit View History Bookmarks Tools Help

http://www.fgdl.org/metadataexplorer/explorer.jsp

FGDL Search/ Download Data

LOGIN FTP TOOLS HELP ABOUT HOME

FGDL METADATA EXPLORER: SEARCH & DOWNLOAD DATA

Search Browse

Home > Source_Agency > U.S. Census Bureau

Records Found: 27

Downloadable Data

CONTENT TITLE	FILENAME	PUBLISHER/ ONLINE LINK	EXTENT	PUB DATE	FGDL ADDED ↓	DOWNLOAD
FLORIDA COUNTY BOUNDARIES - STATEWIDE JUNE 2011	CNTBND_JUN11	U.S. Census Bureau	STATE	1990	2011-06-16	Download View Details
2010 US CENSUS TRACTS IN FLORIDA (SHAPEFILE WITH SELECTED FIELDS FROM 2010 REDISTRICTING SUMMARY FILE)	CENTRACT2010_MAR11	U.S. Census Bureau	STATE	20110317	2011-05-30	Download View Details
2010 US CENSUS BLOCKS IN FLORIDA (SHAPEFILE WITH SELECTED FIELDS FROM 2010 REDISTRICTING SUMMARY FILE)	CENBLK2010_MAR11	U.S. Census Bureau	STATE	20110317	2011-05-30	Download View Details
2010 US CENSUS BLOCK GROUPS IN FLORIDA (SHAPEFILE WITH SELECTED FIELDS FROM 2010 REDISTRICTING SUMMARY FILE)	CENBLKGRP2010_MAR11	U.S. Census Bureau	STATE	20110317	2011-05-30	Download View Details
2010 U.S. CENSUS TRACTS IN FLORIDA (FILE GEODATABASE WITH ASSOCIATED REDISTRICTING TABLES)	CENTRACT2010_SF_MAR11	U.S. Census Bureau	STATE	2010	2011-05-30	Download View Details
2010 U.S. CENSUS BLOCKS IN FLORIDA (FILE GEODATABASE WITH ASSOCIATED REDISTRICTING TABLES)	CENBLK2010_SF_MAR11	U.S. Census Bureau	STATE	2010	2011-05-30	Download View Details
2010 U.S. CENSUS BLOCK GROUPS IN FLORIDA (FILE GEODATABASE WITH ASSOCIATED REDISTRICTING TABLES)	CENBLKGRP2010_SF_MAR11	U.S. Census Bureau	STATE	2010	2011-05-30	Download View Details
US CENSUS BLOCKS IN FLORIDA - 2000 (2009 SPATIAL UPDATE)	CENBLK2000_MAY09	U.S. Census Bureau	STATE	2009	2011-01-17	Download View Details
US CENSUS BLOCK GROUPS IN FLORIDA - 2000 (2009 SPATIAL UPDATE)	BLKGRP2000_MAY09	U.S. Census Bureau	STATE	2009	2011-01-17	Download View Details

Done Get inspired at yogajournal.com

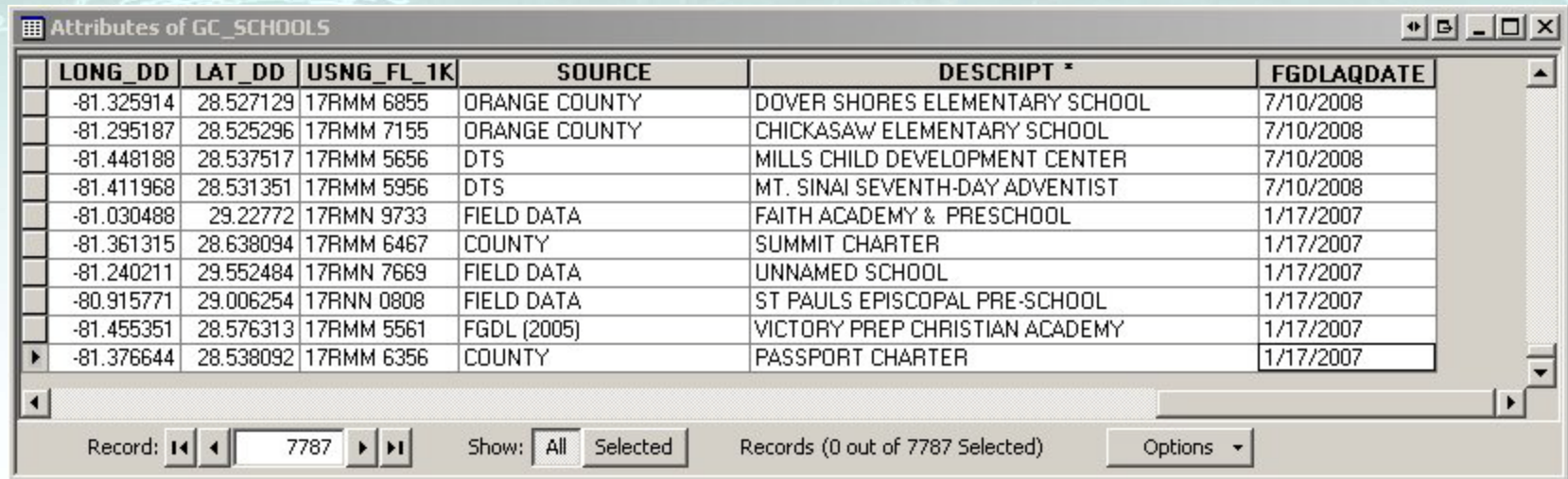
Parcel Derived Layers

- Generalized Land Use (LU_GEN_)
- Parcels Dissolved By Decade Of Actual Year Built (YB_DECADES_)
- Statewide Layers derived from DOR Use Code (PAR_)

GeoPlan Center Sociocultural Layers

- GC_CULTURECENTER_SEP08
- GC_FIRESTAT_FEB08
- GC_LAWENFORCE_FEB08
- GC_SOCIALSERVICE_MAY08
- GC_PARKS_MAR09
- GC_CORRECTIONAL_MAY08
- GC_CIVICCENTER_JUN08
- GC_SCHOOLS_JUL08
- GC_HOTELS_JUL08
- GC_CEMETERY_SEP08
- GC_COMMUNITYCENTER_SEP08
- GC_HOA_SEP08
- GC_ASSISTED_HOUSING_FEB09
- GC_RELIGION_MAR09
- GC_HEALTH_JUL09
- GC_GOVBUILD_JUL09
- GC_MOBILEHOMES_2009
- GC_VETERANS_DEC09
- GC_DAYCARE_OCT10
- GC_LASERS_NOV10
- GC_HOSPITALS_MAY11

Point Layer Fields



Attributes of GC_SCHOOLS

LONG_DD	LAT_DD	USNG_FL_1K	SOURCE	DESCRIPT *	FGDLAQDATE
-81.325914	28.527129	17RMM 6855	ORANGE COUNTY	DOVER SHORES ELEMENTARY SCHOOL	7/10/2008
-81.295187	28.525296	17RMM 7155	ORANGE COUNTY	CHICKASAW ELEMENTARY SCHOOL	7/10/2008
-81.448188	28.537517	17RMM 5656	DTS	MILLS CHILD DEVELOPMENT CENTER	7/10/2008
-81.411968	28.531351	17RMM 5956	DTS	MT. SINAI SEVENTH-DAY ADVENTIST	7/10/2008
-81.030488	29.22772	17RMN 9733	FIELD DATA	FAITH ACADEMY & PRESCHOOL	1/17/2007
-81.361315	28.638094	17RMM 6467	COUNTY	SUMMIT CHARTER	1/17/2007
-81.240211	29.552484	17RMN 7669	FIELD DATA	UNNAMED SCHOOL	1/17/2007
-80.915771	29.006254	17RNN 0808	FIELD DATA	ST PAULS EPISCOPAL PRE-SCHOOL	1/17/2007
-81.455351	28.576313	17RMM 5561	FGDL (2005)	VICTORY PREP CHRISTIAN ACADEMY	1/17/2007
-81.376644	28.538092	17RMM 6356	COUNTY	PASSPORT CHARTER	1/17/2007

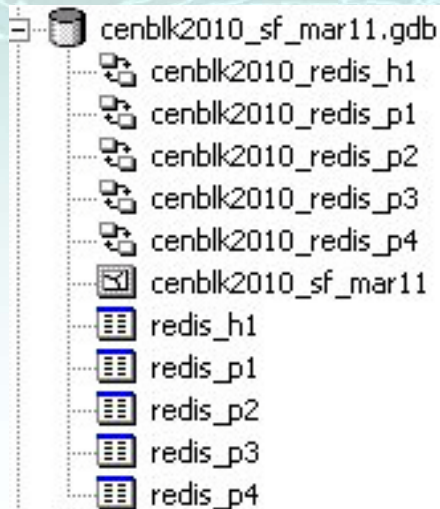
Record: 7787 Show: All Selected Records (0 out of 7787 Selected) Options

Kate Norris

kate@geoplan.ufl.edu

Census Data 2010

File GeoDatabase

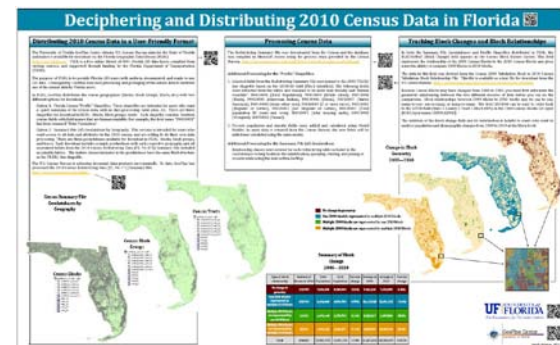


Shapefile



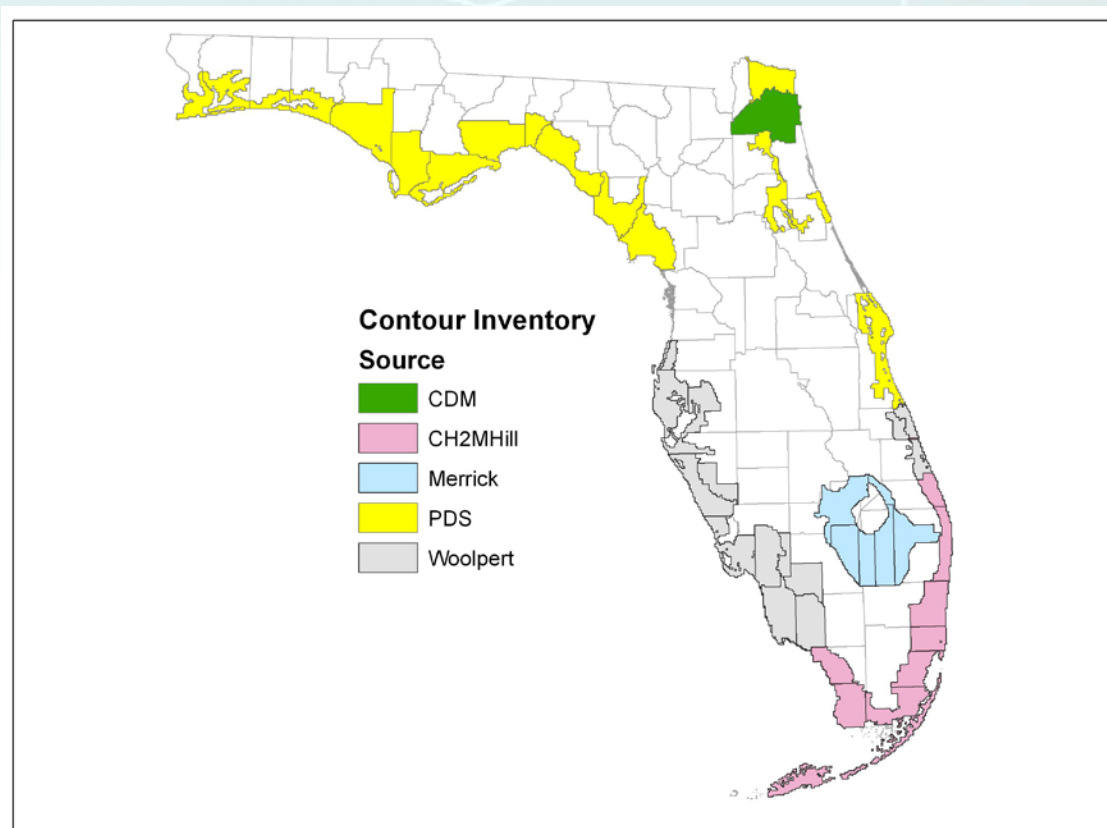
	NOT_HISP	HSE_UNITS	OCCUPIED	VACANT	POP18	POP2010	ACRES
	0	0	0	0	0	0	2.95556
	0	0	0	0	0	0	0.76615
	6	3	3	0	6	6	425.30350
	20	9	8	1	18	20	28.80622
	1	1	1	0	1	1	2.34266
	0	0	0	0	0	0	1.75695
	2	2	1	1	2	2	33.82311
	13	7	6	1	14	15	94.41370
	38	14	13	1	26	39	33.82718
	0	0	0	0	0	0	1.55539
	0	0	0	0	0	0	337.02228
	52	23	18	5	40	53	106.47883
	7	2	2	0	3	7	4.54819

<http://www.fgdl.org/poster>



LIDAR Derived Contour Data

CONTENT TITLE ↑	FILENAME	PUBLISHER/ ONLINE LINK	EXTENT	PUB DATE	FGDL ADDED	DOWNLOAD
FLORIDA 2FT CONTOUR LINES BY COUNTY - 2009 (FILE GEODATABASE FORMAT)	TOPO2FT_GDB	Florida Division of Emergency Management	COUNTY	20090000	2010-09-16	Download View Details
FLORIDA 2FT CONTOUR LINES BY COUNTY - 2009 (SHAPEFILE FORMAT) **Note: More counties are available in Geodatabase format due to size limitations. See the layer TOPO2FT_GDB	TOPO2FT_SHP	Florida Division of Emergency Management	COUNTY	20090000	2010-09-16	Download View Details



FGDL RSS Feed

Florida Geographic Data Library - Mozilla Firefox

File Edit View History Bookmarks Tools Help

http://www.fgdl.org/

Most Visited census ESRI FGDL Florida Geographic Da... GeoPlan MW news&weather reference uf gis_download

FGDL Blogger: Dashboard

- NATIONAL HYDROGRAPHY DATASET - LINEAR ...
- NATIONAL HYDROGRAPHY DATASET - HYDRO...
- PUBLIC PINELANDS - AREAS FOR PRESCRIBED ...
- PARCELS DISSOLVED BY DECADE OF ACTUAL Y...
- PARCELS DISSOLVED BY DECADE OF ACTUAL Y...
- NATIONAL HYDROGRAPHY DATASET - LINEAR ...
- PARCELS DISSOLVED BY DECADE OF ACTUAL Y...

UPDATE HISTORY

FGDL Metadata Explorer: Download Data

Open "FGDL"

Open All in Tabs

Florida Geographic Data Library

The **Florida Geographic Data Library (FGDL)** is a mechanism for distributing spatial (GIS) data throughout the state of Florida. The FGDL is warehoused and maintained at the University of Florida's GeoPlan Center, a GIS Research & Teaching Facility.

Currently, there are over 350 current and historic GIS layers in the FGDL, from over 35 local, state, federal, and private agencies. FGDL includes data on Land Use/ Land Cover, Hydrography, Soils, Transportation, Boundaries, Environmental Quality, Conservation, Census, and more. FGDL contains primarily vector GIS data layers.

Data is available for download free of charge from the [FGDL METADATA EXPLORER](#) or our [FTP site](#). New data layers are continuously added to the FGDL Metadata Explorer.

For imagery and raster data, such as DOQQs and DRGs, please see [LABINS](#).

The FGDL supports the [National Spatial Data Infrastructure \(NSDI\)](#) through the following activities:

- Maintenance of Federal Geographic Data Committee (FGDC) compliant metadata for all data layers distributed.
- Maintenance of the FGDL Metadata Explorer, a GIS Catalog Portal, from which data can be shared, accessed, and searched by other portals and individuals free of charge.
- Participation in the [Geospatial One Stop \(GOSY/geodata.dov\)](#), with FGDL metadata records regularly harvested by GOS.
- Participation as a Clearinghouse Node in the [FGDC's Clearinghouse Registry](#).

Search / Download / View Data

Order Data

Help & Documentation

Metadata

Software

Acknowledgements

FGDL Tools

Sitemap

RSS

GeoPlan Center, University of Florida

FGDL Mailing List

- To join the FGDL mailing list email:
Majordomo@geoplan.ufl.edu
- In the body of the email include:
“subscribe fgdl-l”

GIS Links

Metadata Explorer > Help > FGDL Source Links

Florida Geographic Data Library Data Source Links

The Florida Geographic Data Library (FGDL) houses data from a number of Federal, State, and Local sources. Below are links to the websites from which we collect GIS data for FGDL.

- [U.S. National Level Data GIS Sources](#)
- [Florida State Agency GIS Data Sources](#)
- [Florida GIS Libraries](#)
- [Florida Water Management District Data Sources](#)
- [Regional Planning Council Data Sources](#)
- [Local Agency Data Sources \(County & City\)](#)
- [Software Links](#)
- [Report dead links or add your data link \(Click Here\)](#)

U.S. National Level Data Sources

Environmental Systems Research Institute, Inc. (Esri)

[ESRI Main Page](#)

[ESRI Data Products Page](#)

[ESRI Download Census 2000 TIGER/Line® Data](#)

An aerial photograph of the state of Florida, showing its coastline and internal river networks. The image is overlaid with a semi-transparent teal color, which is darker in the upper portion and fades to white in the lower portion. The text is centered on this background.

Questions or Comments:

sam@geoplan.ufl.edu

Brief Survey:

www.fgdl.org/survey