



SITUATION REPORT No. 10 Hurricane WILMA



The Florida State Emergency Response Team
October 23, 2005 Published at 1200 Hours
State Emergency Operations Center Level: **1**

Operational Period: October 23, 2005 0700 Hrs. – October 23, 2005 1900 Hrs.

CURRENT SITUATION

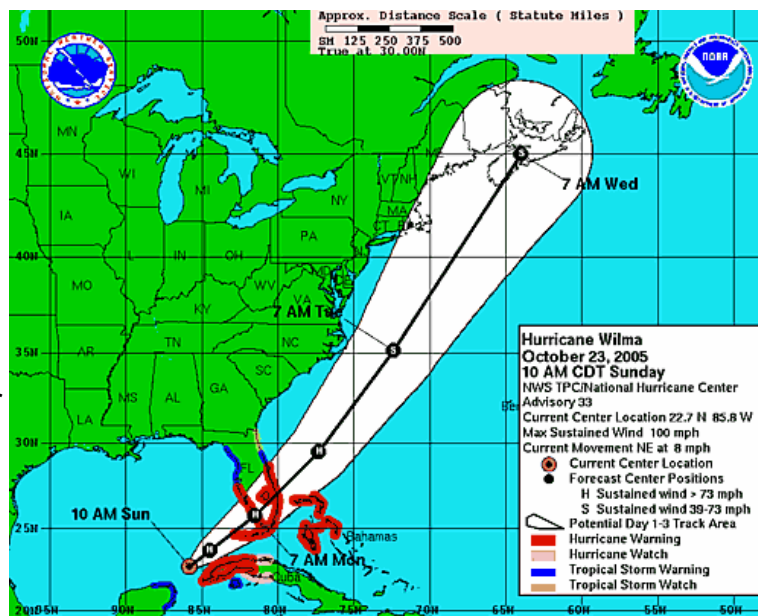
The State Emergency Operations Center is currently at Level 1 activation and continuing to prepare for a response to Hurricane Wilma.

WEATHER SUMMARY:

At 11:00 am the center of Hurricane Wilma was located near latitude 22.7 north and longitude 85.8 west or about 285 miles west-southwest of Key West, Florida. Wilma is moving toward the northeast near 8 mph and an increase in forward speed is expected today and tonight. Maximum sustained winds are near 100 mph with higher gusts. Wilma is a category two hurricane on the Saffir-Simpson scale. Some strengthening is possible today and tonight.

Hurricane force winds extend outward up to 70 miles from the center and tropical storm force winds extend outward up to 200 miles. Storm surge flooding of 8 to 13 ft above normal tide levels are possible along the southwest Florida coast near and to the south of where the center of Wilma makes landfall. Storm surge flooding of 5 to 8 ft above normal is possible in the Florida Keys and Florida Bay as well as in Lake Okeechobee. Storm surge flooding of 8 to 13 feet above normal tide levels is possible along the southwest Florida coast near and to the south of where Wilma makes landfall. Rainfall across southern Florida including the Keys through Tuesday is expected to be 4 to 8 inches with isolated maximum amounts of 12 inches possible. Isolated tornadoes are possible over the central and southern Florida peninsula and the Florida Keys today and tonight.

A Hurricane Warning is in effect for all of the Florida Keys including the Dry Tortugas and Florida Bay along the Florida west coast from Longboat Key southward and along the Florida east coast from Titusville southward including Lake Okeechobee. A Tropical Storm Warning remains in effect along the Florida west coast north along Longboat Key to Steinhatchee River and along the Florida east coast north of Titusville to Flagler Beach. A Tropical Storm Watch remains in effect along the east coast of Florida from north of Flagler Beach to Fernandina Beach.

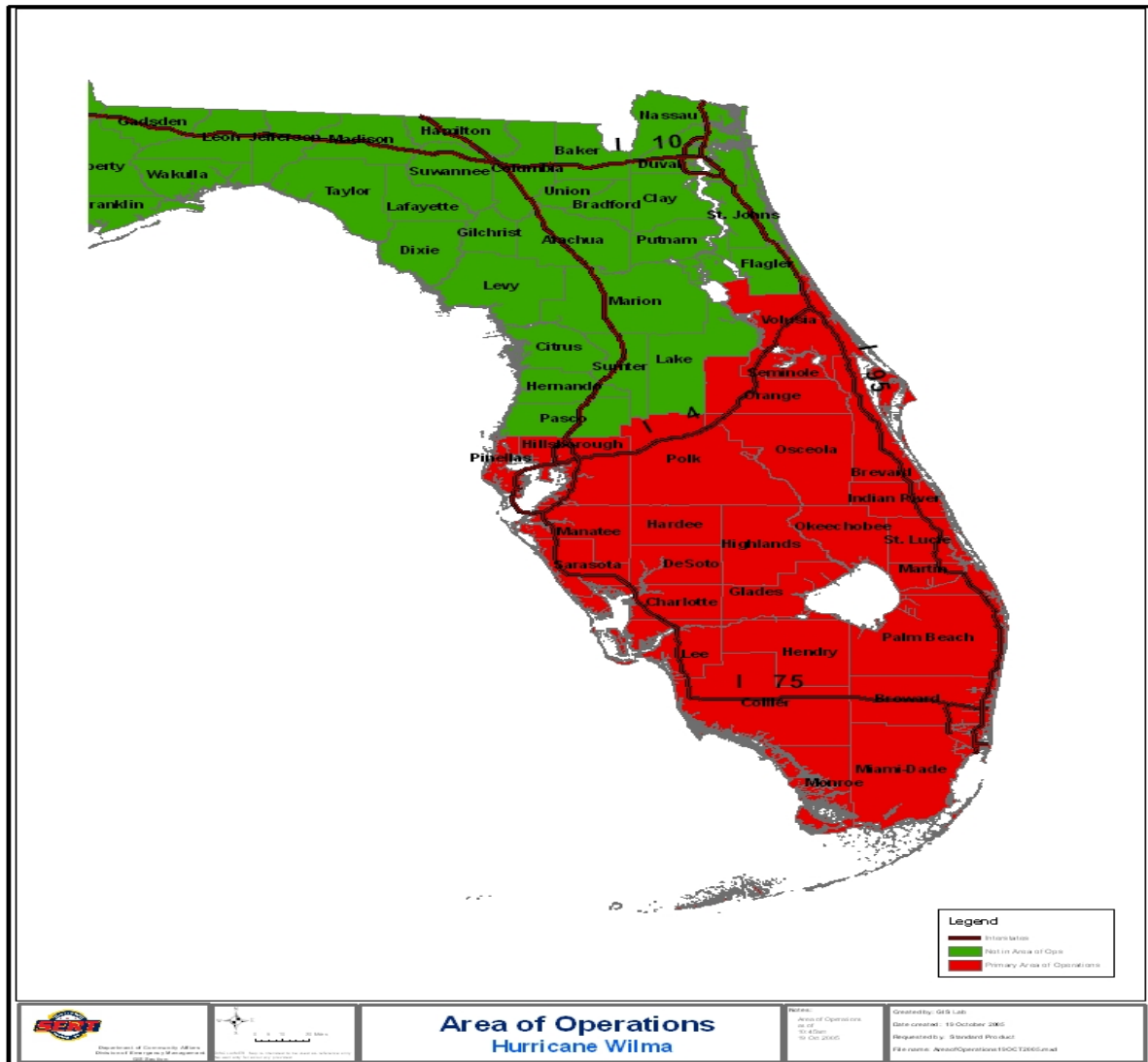


CONSEQUENCES:

- 1. Evacuation** – Several counties anticipate issuing evacuation orders see chart below.
- 2. Sheltering** – Currently there are **47** shelters open with **2,640** evacuees in Miami-Dade (**330**) and Collier County (**1,008**) Lee County with (**1,299**) and Glades County (3) (see updated county chart)
- 3. School Closings** – The following schools will be closed: Collier 10/24/05, Lee 10/24/05, Hardee 10/24/05, Polk 10/24/05, Okeechobee 10/24/05, and St. Lucie 10/24/05. (see county chart)

4. **Hurricane Watch** – A hurricane watch means that hurricane conditions are possible within the watch area generally within 36 hours.
5. **Hurricane Warning** - A hurricane warning means that hurricane conditions are expected within the warning area generally within the next 24 hours.
6. **Currently the following counties have hotel availability:** Collier (**0 rooms**), Seminole (248 rooms), Osceola (1,000 rooms), Polk (1,138 rooms), Lee (37 rooms), Hillsborough (2,243 rooms), Pinellas (2,300 rooms), Indian River (500 rooms), Hardee (10 rooms), St. Lucie (20 rooms), Highlands (362 rooms), Glades (2 rooms), **Charlotte (20 rooms)**, Broward (700 rooms), Miami-Dade (551 rooms), Brevard (**2,500 rooms**), Hernando (10 rooms) and Orange (9,000 rooms).
(updates in bold 10/23/05)

County Actions: AREA OF OPERATIONS



County	EOC Level	LSE	Evacuations	Shelters	Government & School Closings
Area 7					
Monroe	Level 2	10/19/05	Mandatory evacuation of all mobile homes		Courts closed 10-20-21&24/05
Miami-Dade	Partial	10/22/05	Mandatory mobile home and parks, low lying flood prone areas on 10/23/05	2 SPN open 10/23/05 1 General & 1 Pet friendly	
Broward	Level 2	10/22/05	Mandatory mobile home and parks 10/23/04		Schools closed 10/24/05
Palm Beach	Level 1		Evacuation for mobile home and low-lying and substandard areas	1 general open	County offices & schools closed 10/24/05
Martin	Monitoring				
St. Lucie	Monitoring	10/22/05			County offices & schools closed 10/24/05
Indian River	Level 1	10/20/05	Mandatory evacuation for mobile homes and voluntary extreme coastal areas and barrier islands @ 8am 10/23/05	4 general shelters will open @ 5:00PM 10/23/05 & 1 SPn open @ 3:00pm	Schools and government offices closed 10/24/05
Area 6					
Collier	Level 1	10/20/05	Evac for areas west and south of US-41 includes Marco Island, Everglades City, Goodland, Chokolskee, Plantation Island, Isles of Capri Henderson Creek area, all coastal communities north to county line & Naples.	9 shelters open	Only the Courts closed on 10/24/05
Lee	Level 2	10/19/05	Mandatory evacuations 10/22/05 @ 12:00 for Barrier Islands, Ft. Myers Beach, Sanibel/Captiva Island, Bonita Beach, Pine Island & mobile homes S. of Caloosahatchee River (expanded)	9 General shelters and 1 Spn open	School and Government 10/24/05
Hendry	Level 2	10/21/05	Voluntary evacuation on 10/22/05		
Charlotte	Level 2		Recommended mobile homes, travel trailers on 10/23/05 @ 10:am	3 General shelters open @3Pm	
Glades	Level 1		Mandatory mobile homes & low lying areas	2 General open and 1 Spn open	Schools and government offices closed 10/24/05
Sarasota	Partial	10/21/05	Mandatory evacuation for mobile homes & low-lying areas-10/23/05 9PM	2 General shelters & 2 pet open @ 9am 0/23/05	Schools and government offices closed 10/24/05
DeSoto	Partial	10/20/05	Recommended Voluntary for mobile homes, vulnerable housing on 10/23/05	Spn shelters open @ 6:Pm general open @3:pm 10/24/05	Schools and county closed 10/24/05
Highlands	Level 2	10/20/05	Voluntary for mobile homes 10/23/04	General open @4pm 10/23/05	Schools and government offices closed 10/24/05
Okeechobee	Level 3	10/21/05	Mandatory evacuation for mobile homes and wood structures 10/23/05		Schools and government offices closed 10/24/05
Hardee	Partial	10/21/05	Evacuation 10/24/05 for low lying areas, RV's and substandard homes	General open @4pm 10/23/05	Schools closed 10/24/05 and county offices open 10/24/05
Manatee	Monitoring	10/20/05	Voluntary evacuation of mobile homes	General open @2pm 10/23/05	Schools and government closed 10/24/05
Area 5					
Brevard	Level 2		Mandatory evacuation mobile homes and manufactured homes	Spn shelters open @ 10am	
Volusia	Monitoring				Schools and government offices closed 10/24/05
Orange	Level 2				
Osceola	Partial				
Sumter	Level 2		Voluntary for mobile homes and low lying areas	Open 1 Spn @ 1PM and General @ 6PM	Schools closed 10/24/05
Lake	Level 2				
Area 4					
Pasco	Level 3				
Hillsborough	Partial	10/20/05			Schools and government offices closed 10/24/05
Polk	Monitoring	10/21/04			Schools closed 10/24/05

Table continued					
Pinellas	Level 3				Schools closed 10/24/05
Hernando	Level 2				Schools closed 10/24/05

STATE ACTIONS:

- The SEOC is activated at a Level 1 and is operational 24 hours
- Conference calls with counties conducted at 1115 hrs and 1715 hrs daily
- The State Emergency Response Team continues to monitor the progress of Hurricane Wilma
- ESF 5 requested and activated the State Evacuation Team
- SEOC briefings are held twice daily
- The Florida Emergency Information Line (FEIL) line has been activated 1-800-342-3557

Executive Orders:

Governor Bush has executed the following Executive Order(s):

EXECUTIVE ORDERS		
EXECUTIVE ODER NUMBER	DATE SIGNED	PURPOSE
05-219	19 October 2005	State of Emergency – Hurricane Wilma

PERSONNEL DEPLOYMENTS (updated 10/22/05)		
Type of Personnel	Location of Deployments	Date of Deployments
SERT LIAISONS	Collier (4), Lee (4), Broward (1), Charlotte (4), Monroe (5), Miami-Dade (4), Palm Beach (2), Okeechobee (4), Martin (2), St. Lucie (3),	10/18-23/05
RECON	Collier (1), Monroe (1)	10/20/05
FI National Guard	Monroe (3), Collier (1),	10/21/05

Federal Declarations:

FEDERAL DECLARATIONS		
TYPE OF DECLARATION	DATE OF ACTION	PURPOSE
None at this time		

SERT REPORTS:

Operations Support Branch:

- Nothing to report during this operational period

Emergency Services Branch

ESF 4 & 9

- FL USAR Command & Coordination Team Activated
- USAR Incident Support Team activated
- FL TF 1 Activated (Miami) - FL TF 2 Activated (Miami)

- VA TF 2 Activated (Orlando) - TN TF 1 Activated (Orlando)
- FL TF 3 On Activated (Tampa Bay) - FL TF 5 On Activated (Jacksonville) - FL TF 8 On Activated (Central Florida)
- 2 Engine Strike Teams Activated
- FL TF 4 Activated (Orlando) - FL TF 9 (Swift Water) Activated (Daytona)
- 4 DOF IMT Teams

ESF 8

- Special Needs Sheltering
- As of 1500, 2 Special Needs Shelters (SpNS) are open
- FIU 52 patients/caregivers
- Ray Pottorf Elementary School (Lee County) 62 patients/caregivers
- Deployed 2 SpNS regional coordinators to assist in Risk Areas
- Other SpNS Shelters are opening as needed, depending based on evacuation orders.
- Monroe County Hospitals
- Lower Keys Medical Center, Mariner's Hospital, and Fishermans's Hospital: ERs open for Basic Services only until 1200 on 23 Oct 2005.
- Intermediate Care Facilities
- 11 Facilities have evacuated in Lee, Miami-Dade, and St. Lucie Counties.

ESF 10

- Identified 4 two-person Hazmat teams.
- Identifying Hazmat Response Resources and planning for staging of State & Federal Teams.
- Established holding capacity of phosphate mines in Hillsborough, Polk and Manatee Counties.

ESF 16

- 702 State Law Enforcement assets have been identified and are prepared for deployment.
- 986 Sheriff's Office and Police Department personnel have prepared for deployment at the direction of ESF 16 @ at the State EOC.
- Regional Law Enforcement Command Centers are prepared for activation as appropriate.

Infrastructure Branch:

ESF1&3

- FDOT & CAP resources ready for recon & debris clearance missions
- 100 Road rangers enhancement/augmentation being planned & implemented (100 gal mobile tanks preparing to deploy)
- FDOT fleet yard fuel tanks topped-off
- FDOT public transit office ready to assist w/evacuation

ESF 2 is staffed and operational

- Currently have cell, satellite, and analog phones, FRS radios (very short range) and air cards on standby
- 38 sat phones activated: 22 deployed, 194 cell phones deployed
- Contacted telecom industry for standby in their local areas
- Prepared to support LSA and other SERT temp. facility comm. support
- Activating conference call bridge lines
- Assisting with cell and satellite phone requests
- FEIL telecom is operational

ESF 12/Fuels desk operational

- Orange, Palm Beach, Broward, Miami-Dade, I-95, US-1: 100% have plenty
- Hillsborough County: 90% have plenty, 10% low

- Pinellas and Pasco: 89% have plenty, 11% were out
 - I-4 Corridor: 80% have plenty, 20% were low.
 - Charlotte: 60% have plenty, 30% low, and 10% were out
 - Lee: 80% have plenty, 10% low, 10% out
 - FL Turnpike: 75% have plenty, 25% were low
 - Eleven (11) 9,000 gal tenders acquired for Emergency Services response ops
 - One tender deployed to Key West, 10 tenders to Ocala to rendezvous with SAR
 - Other mobile & drop-off tenders/tankers, plus five (5) short tenders (> 4,000 gal ea.) available
- ELECTRIC**
- FP&L, Co-ops and municipals report that out-of-state and mutual aid crews are on standby
 - FP&L alone estimates that 6,500 out-of-state crew members on standby
 - Municipal utilities and Electric Coops have activated their mutual aid agreements. Personnel and equipment have begun positioning- standing ready to respond in their areas.
 - One major investor-owned utility, four electric co-ops and six municipalities will likely be impacted if storm stays on projected path.

Human Services Branch:

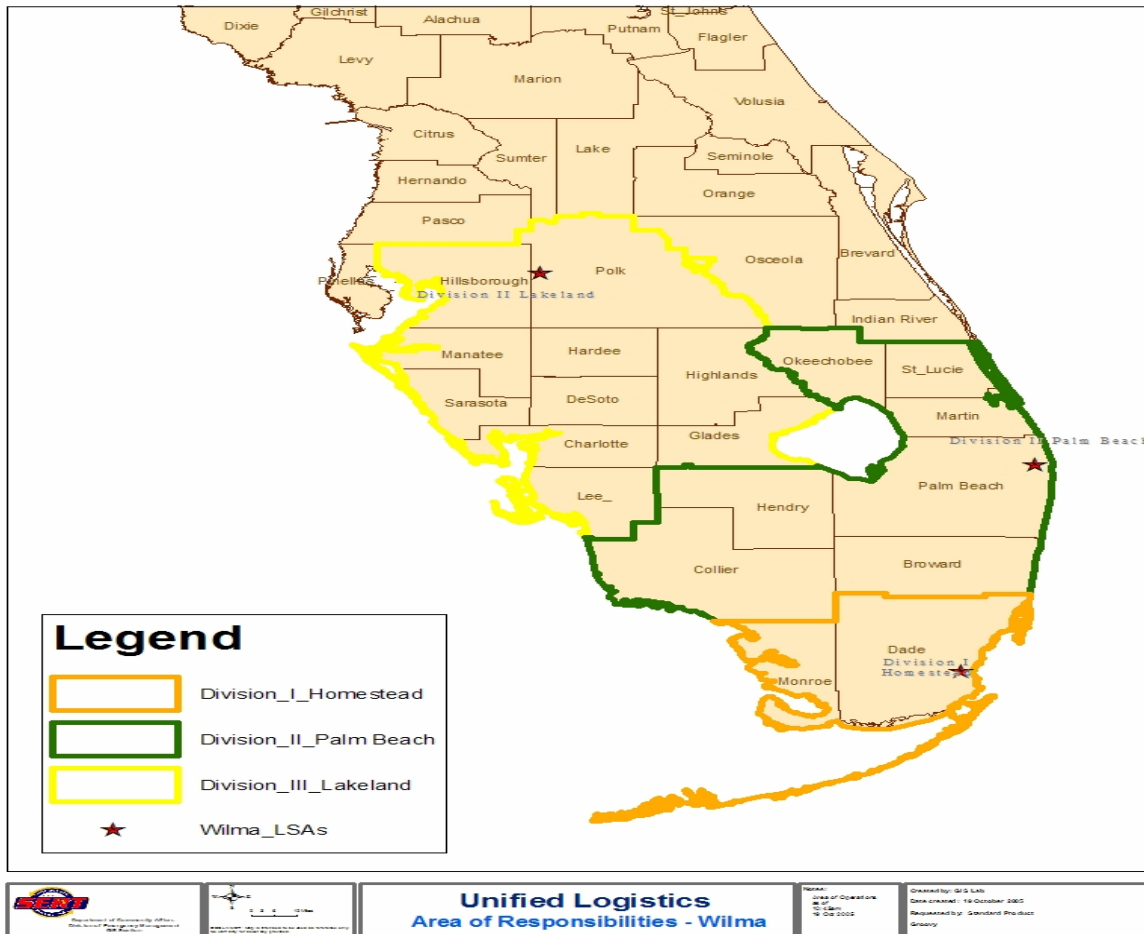
- 8 shelters open over night with 1,305 evacuees, 132 shelters on standby
- 50 trucks water/44 trucks ice loaded & at White Springs site
- 170 trucks water & 150 trucks ice in state
- 1 truck of baby food
- 90,000 cases of USDA food to support ARC & TSA on hand
- Conference calls with ESF 15 coordinators & partners
- Oriented two support group management teams
- Animal movement restrictions lifted
- Emergency animal shelter info posted
- 17 Incident Management Team (IMT) on standby

Logistics Branch:

- 360 "State LSA Sites"
- #372 "Unified Logistics Section IAP"
- #373 "County POD Guidance"
- #375 "POD Forecast Model"
- RESOURCES:
- 1755 Trucks Water remaining at Live Oak Warehouse
- 50 trucks being uploaded presently to White Springs
- 50 additional trucks being uploaded 10/22/05
- 150 Trucks Ice remaining in JAX and Polk County
- 50 trucks being uploaded presently to White Springs
- 50 additional trucks being uploaded 10/22/05
- 2 Trucks Shelf Stable Meals at Live Oak being uploaded
- 3 Type I LSA MHE, Pumps and Generator Packages ordered
- 1 Package to arrive 10/23
- 2 Packages to arrive 10/24
- 3 LSA Shuttle Fleets ordered
- 8,320 Tarps being ordered

- 3 State LSA Locations and AOR's (Will open after landfall)
- DIVISION I: Homestead ARB, Homestead, FL (Joint State/Federal Site)

Logistics



- DIVISION II: South Florida Fairgrounds, West Palm Beach, FL
- DIVISION III: Tropicana Packing Plant, Lakeland, FL (Central Generator Site)
- 1 State Mobilization Area - White Springs, FL (Activated)
- Mobilization Coordination Center (Activating 10/22/05)
- Management of Land, Air, Sea and Rail Shipping Movements
- RSO&I available for activation to support inbound teams

Finance and Administration:

- Creating Purchase Orders for (2) LSA Packages and Shuttle Fleets
- Tracking costs for Wilma
- Assisting with staff deployments
- Purchasing supplies as needed

Public Information:

- Continuing to disseminate preparedness and safety messages
- Conducting daily press briefings

Recovery:

- Continuing to support SERT Liaisons deployment
- Finalized Preliminary Damage Assessment teams

Information & Planning Section: Situation and Flash reports are issued as needed. Counties are reminded to email their Situation Reports to esf5@dca.state.fl.us

Florida Division of Emergency Management Contact Information

Planning Section E-Mail Address: esf5@dca.state.fl.us

Internet: <http://www.floridadisaster.org>