



SITUATION REPORT No. 12

Hurricane WILMA



The Florida State Emergency Response Team
October 24, 2005 Published at 0700 Hours
State Emergency Operations Center Level: **1**

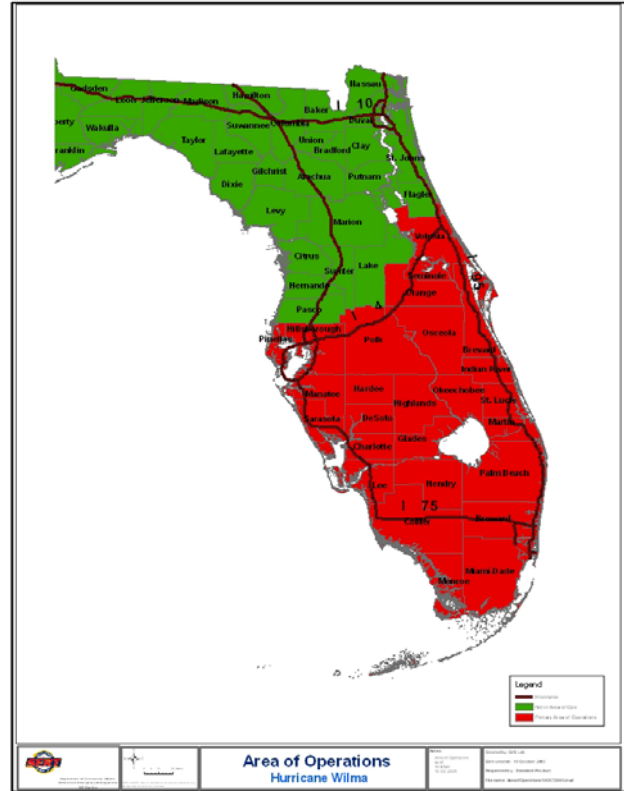
Operational Period: October 23, 2005 1900 Hrs. – October 24, 2005 0700 Hrs.

CURRENT SITUATION

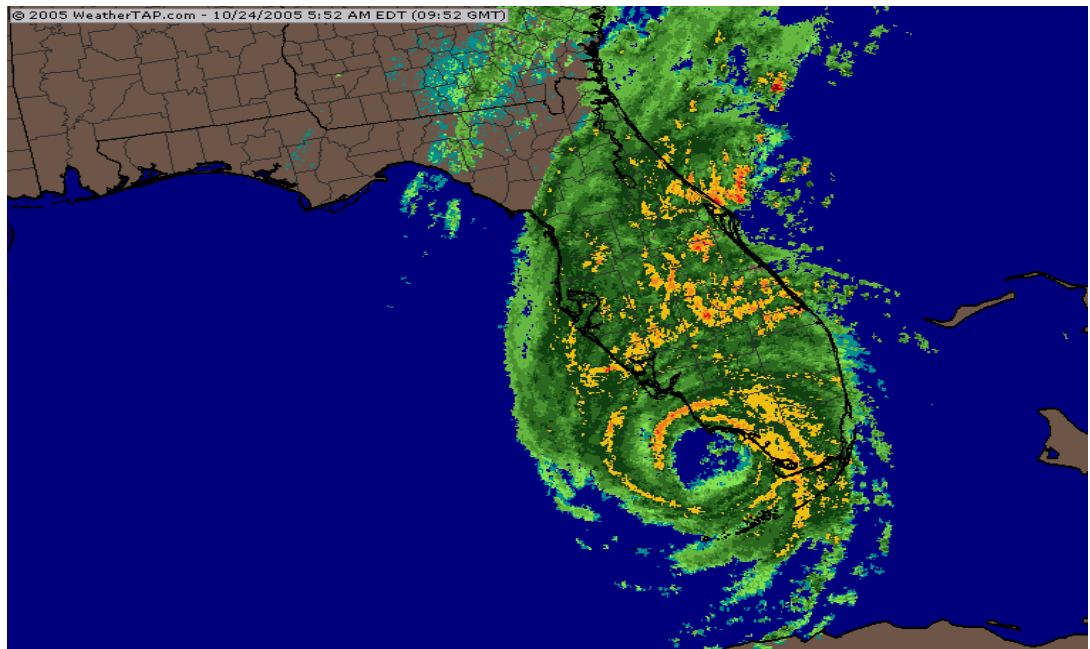
The State Emergency Operations Center is currently at Level 1 activation and continuing to prepare for a response to Hurricane Wilma.

WEATHER SUMMARY:

Wilma stronger and approaching the southwest coast of Florida. A hurricane warning remains in effect for all of the Florida Keys, including the Dry Tortugas and Florida Bay Longboat Key southward. And along the Florida east coast from Titusville southward, including Lake Okeechobee. A tropical storm warning remains in effect along the Florida west coast north of Longboat Key to Steinhatchee River and along the Florida east coast north of Titusville to St. Augustine. A tropical storm watch remains in effect along the northeast coast of Florida from north of St. Augustine to Fernandina Beach. Storm surge flooding of 12 to 18 ft above normal tide levels is possible along the southwest Florida coast near and to the south of where the center of Wilma makes landfall. Storm surge is possible in the Florida Keys and Florida Bay, as well as in Lake Okeechobee. Storm surge of 2 to 4 feet is possible along the extreme southeastern coast of Florida.



Hurricane Wilma Makes Landfall

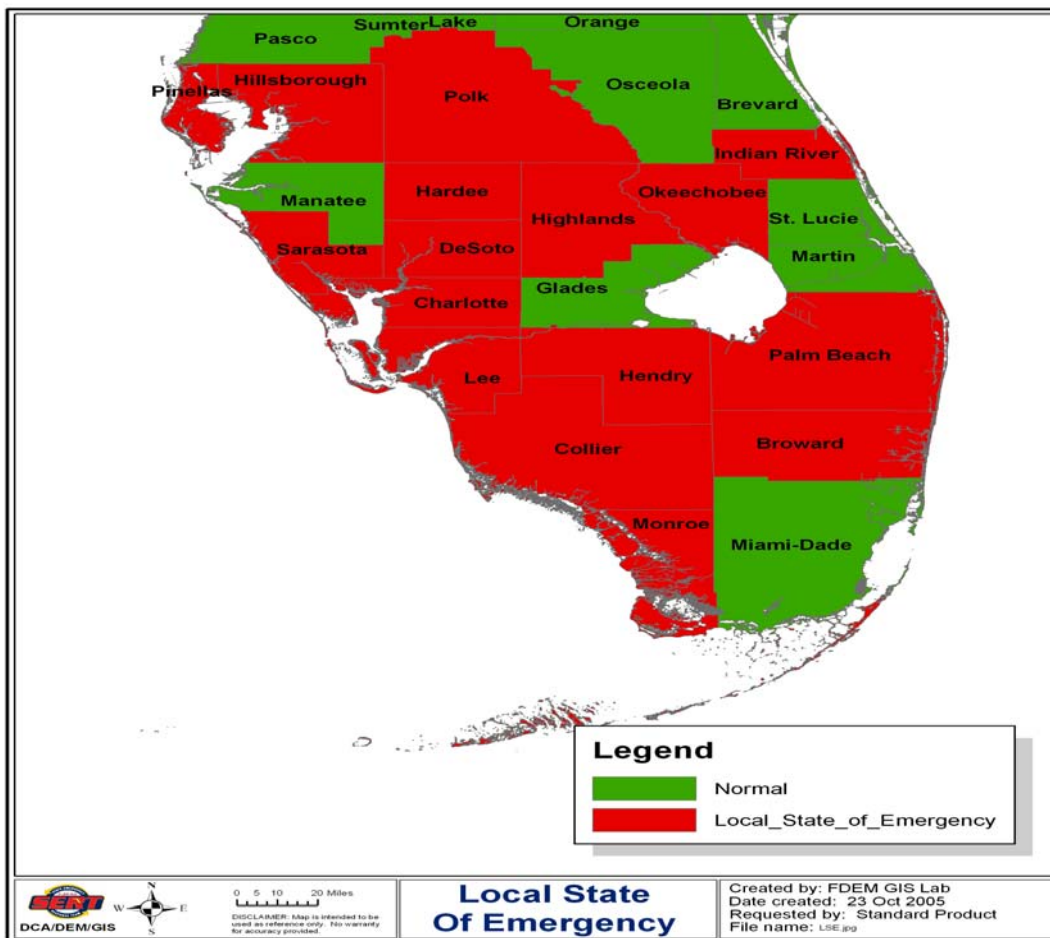


CONSEQUENCES:

1. **Evacuation** – Several counties have issued evacuation orders. (see chart below)
2. **Sheltering** – Currently there are **123** shelters open with **33, 189** evacuees with **2,177** Special Needs evacuees as of 0900 hours.(see updated county chart)
3. **School Closings** – Currently there are several counties with school closures. (see county chart)
4. **Hurricane Watch** – A hurricane watch means that hurricane conditions are possible within the watch area generally within 36 hours.
5. **Hurricane Warning** - A hurricane warning means that hurricane conditions are expected within the warning area generally within the next 24 hours.
6. **Currently the following counties have hotel availability:** Collier (**0 rooms**), Seminole (**500 rooms**), Osceola (1,000 rooms), Polk (1,138 rooms), Lee (37 rooms), Hillsborough (2,243 rooms), Pinellas (2,300 rooms), Indian River (500 rooms), Hardee (10 rooms), St. Lucie (20 rooms), Highlands (**120 rooms**), Glades (**12 rooms**), **Charlotte (20 rooms)**, Broward (**2,000 rooms**), Miami-Dade (551 rooms), Brevard (**2,500 rooms**), Hernando (10 rooms), Columbia (full), Marion (75-100 rooms) and Orange (9,400 rooms). (updates in bold 10/24/05)
7. **Power Outages:** Currently there are **380,000** residents within the impacted areas without power.
8. **The following counties have issued curfew orders:** Monroe county (Key West) 7:00PM - 7:00AM, Lee County (Bonita Springs and Sanibel) 9:00PM to 9:00AM and Highlands (2:00AM-5:00PM).

County Actions:

Local State of Emergency



EOC ACTIVATIONS

County	EOC Level	LSE	Evacuations	Shelters	Government & School Closings
Area 7					
Monroe	Level 2	10/19/05	Mandatory evacuation of all mobile homes		Courts closed 10-20-21&24/05
Miami-Dade	Partial	10/22/05	Mandatory mobile home and parks, low lying flood prone areas on 10/23/05	6 shelters open with 521 evacuees	
Broward	Level 2	10/22/05	Mandatory mobile home and parks 10/23/04	10 shelters open with 590 evacuees	Schools closed 10/24/05
Palm Beach	Level1		Evacuation for mobile home and low-lying and substandard areas	17 shelters open with 646 evaucees	County offices & schools closed 10/24/05
Martin	Monitoring				
St. Lucie	Level 1	10/22/05	Mandatory evac barrier Islands, mobile and manufactured homes 10/23/05	4 general shelter & 2 Spn open @ 10/23/05	County offices & schools closed 10/24/05, FAU and Indian River Com. College closed on 10/24/05 Ft. Pierce city hall closed 10/24/05, community transit closed 10/24/05
Indian River	Level 1	10/20/05	Mandatory evacuation for mobile homes and voluntary extreme coastal areas and barrier islands @ 8am 10/23/05	4 general shelters will open @ 5:00PM 10/23/05 & 1 SPn open @ 3:00pm	Schools and government offices closed 10/24/05—Bridges—all Barrier Island bridges closes @ 6am 10/24/05
Area 6					
Collier	Level 1	10/20/05	Evac for areas west and south of US-41 includes Marco Island, Everglades City, Goodland, Chokolskee, Plantation Island, Isles of Capri Henderson Creek area, all coastal communities north to county line & Naples.	11 shelters open with 3,961 evacuees	Only the Courts closed on 10/24/05
Lee	Level 2	10/19/05	Mandatory evacuations 10/22/05 @ 12:00 for Barrier Islands, Ft. Myers Beach, Sanibel/Captiva Island, Bonita Beach, Pine Island & mobile homes S. of Caloosahatchee River (expanded)	9 General shelters and 1 Spn open with 125 evacuees	School and Government 10/24/05
Hendry	Level 2	10/21/05	Voluntary evacuation on 10/22/05	4 shelters with 155 evacuees	
Charlotte	Level 2		Recommended mobile homes, travel trailers on 10/23/05 @ 10:am	3 General shelters open @3Pm	
Glades	Level 1		Mandatory mobile homes & low lying areas	7 shelters open with 111 evacuees	Schools and government offices closed 10/24/05
Sarasota	Partial	10/21/05	Mandatory evacuation for mobile homes & low-lying areas-10/23/05 9PM	6 shelters open with 253 evacuees	Schools and government offices closed 10/24/05
DeSoto	Partial	10/20/05	Recommended Voluntary for mobile homes, vulnerable housing on 10/23/05	Spn shelters open @ 6:Pm general open @3:pm 10/24/05	Schools and county closed 10/24/05
Highlands	Level 2	10/20/05	Voluntary for mobile homes 10/23/04	1 General open with 38 evacuees	Schools and government offices closed 10/24/05
Okeechobee	Level 3	10/21/05	Mandatory evacuation for mobile homes and wood structures 10/23/05	3 shelters open 314 evacuees	Schools and government offices closed 10/24/05
Hardee	Partial	10/21/05	Evacuation 10/24/05 for low lying areas, RV's and substandard homes	General open @4pm 10/23/05	Schools closed 10/24/05 and county offices open 10/24/05
Manatee	Monitoring	10/20/05	Voluntary evacuation of mobile homes	2 General open with 28 evacuees	Schools and government closed 10/24/05
Area 5					
Brevard	Level 2		Mandatory evacuation mobile homes and manufactured homes	11 shelters open with 814 evacuees	
Volusia	Level 2	10/23/05			Schools and government offices closed 10/24/05
Orange	Level 2				Schools closed 10/24/05
Osceola	Partial	10/23/05		3 General & 1 SPn	Schools and government offices closed 10/24/05
Lake	Level 2			1 combined	Schools closed 10/24/05
Sumter	Level 2		Voluntary for mobile homes and low lying areas	Open 1 Spn @ 1PM and General @ 6PM	Schools closed 10/24/05
Marion					Schools closed 10/24/05
Lake	Level 2				Schools closed 10/24/05

Area 4					
Seminole	Level 2			1 Spn & 1 Gen, 1 pet open	Schools and government offices closed 10/24/05
Pinellas	Level 3				Schools closed 10/24/05
Hernando	Level 2				Schools closed 10/24/05
Pasco	Level 3				
Hillsborough	Partial	10/20/05			Schools and government offices closed
Area 3					
Levy	Level 2				

STATE ACTIONS:

- The SEOC is activated at a Level 1 and is operational 24 hours
- Conference calls with counties conducted at 1115 hrs and 1715 hrs daily
- The State Emergency Response Team continues to monitor the progress of Hurricane Wilma
- ESF 5 requested and activated the State Evacuation Team
- SEOC briefings are held twice daily
- The Florida Emergency Information Line (FEIL) line has been activated 1-800-342-3557

Executive Orders:

Governor Bush has executed the following Executive Order(s):

EXECUTIVE ORDERS		
EXECUTIVE ORDER NUMBER	DATE SIGNED	PURPOSE
05-219	19 October 2005	State of Emergency – Hurricane Wilma

PERSONNEL DEPLOYMENTS (updated 10/22/05)		
Type of Personnel	Location of Deployments	Date of Deployments
SERT LIAISONS	Collier (4), Lee (4), Broward (1), Charlotte (3), Monroe (5), Miami-Dade (4), Palm Beach (2), Okeechobee (4), Martin (3), St. Lucie (3), Glades (2), Highlands (1),	10/18-23/05
RECON	Collier (1), Monroe (1)	10/20/05
FI National Guard	Monroe (1), Miami-Dade (2), Broward (2) Collier (1),	10/21/05

Federal Declarations:

FEDERAL DECLARATIONS		
TYPE OF DECLARATION	DATE OF ACTION	PURPOSE
None at this time		

SERT REPORTS:

Operations Support Branch:

- Nothing reported during this operational period

Emergency Services Branch

- Nothing reported during this operational period

Infrastructure Branch:

- Nothing reported during this operational period

Human Services Branch:

- Nothing reported during this operational period

Logistics Branch:

- Nothing reported during this operational period

Finance and Administration:

- Purchasing and renting equipment and supplies for the EOC and LSAs
- Assisting with deployment of staff
- Continuing to track costs for our Agency

Public Information:

- Continuing to disseminate preparedness and safety messages
- Conducting daily press briefings

Recovery:

Information & Planning Section: Situation and Flash reports are issued as needed. Counties are reminded to email their Situation Reports to esf5@dca.state.fl.us

Florida Division of Emergency Management Contact Information

Planning Section E-Mail Address: esf5@dca.state.fl.us

Internet: <http://www.floridadisaster.org>