

Florida Natural Areas Inventory (FNAI)

Downloadable Datasets and
Interactive Maps

FLORIDA STATE
UNIVERSITY



**Florida Resources and
Environmental Analysis Center
at the Institute of Science and
Public Affairs**

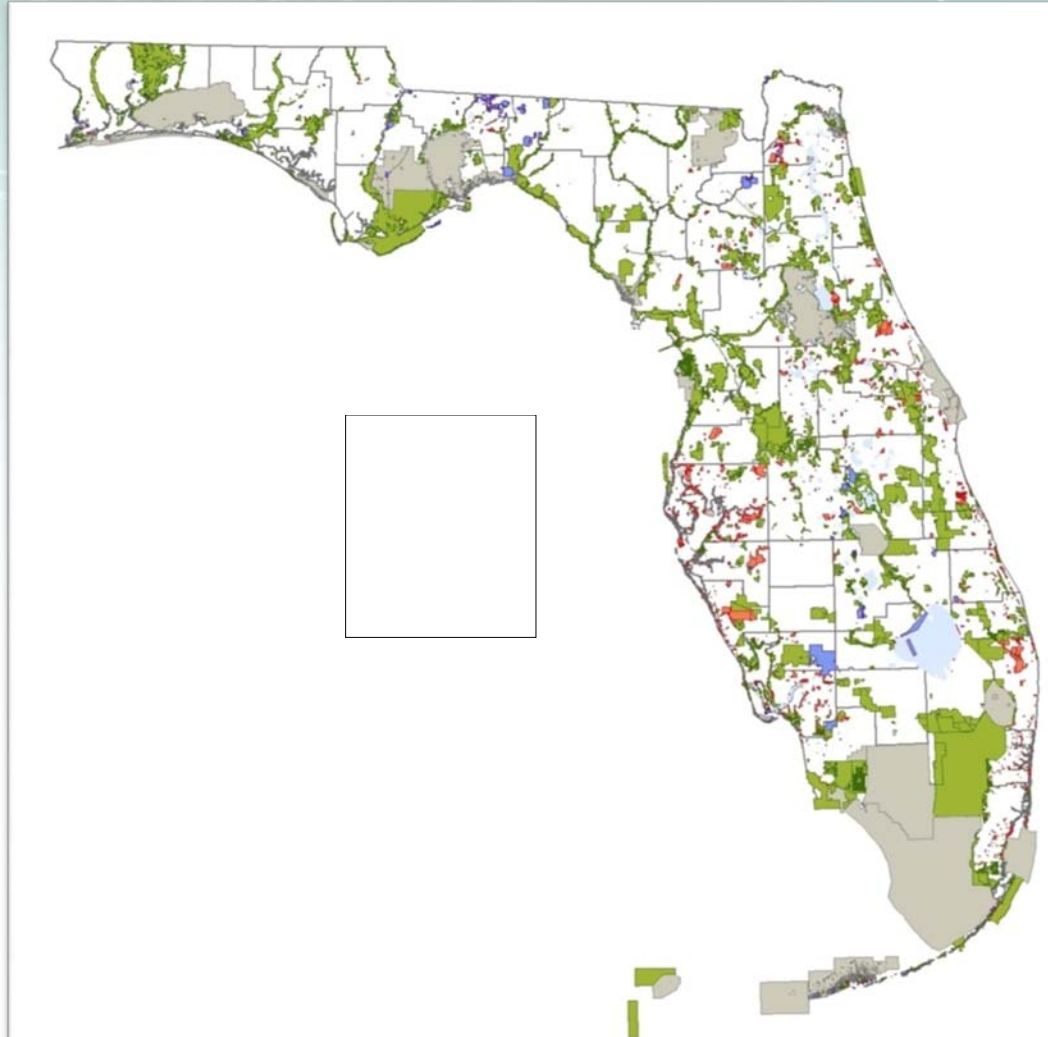


Florida Conservation Lands

aka Florida Managed Areas



- Federal, State, Local Government, and Private Holdings
- More than 2000 conservation holdings in database
- Data provided directly by agencies
- Updated quarterly



Florida Conservation Lands aka Florida Managed Areas



Downloadable shapefile: [FLMA.shp](#)

www.fnai.org/gisdata.cfm

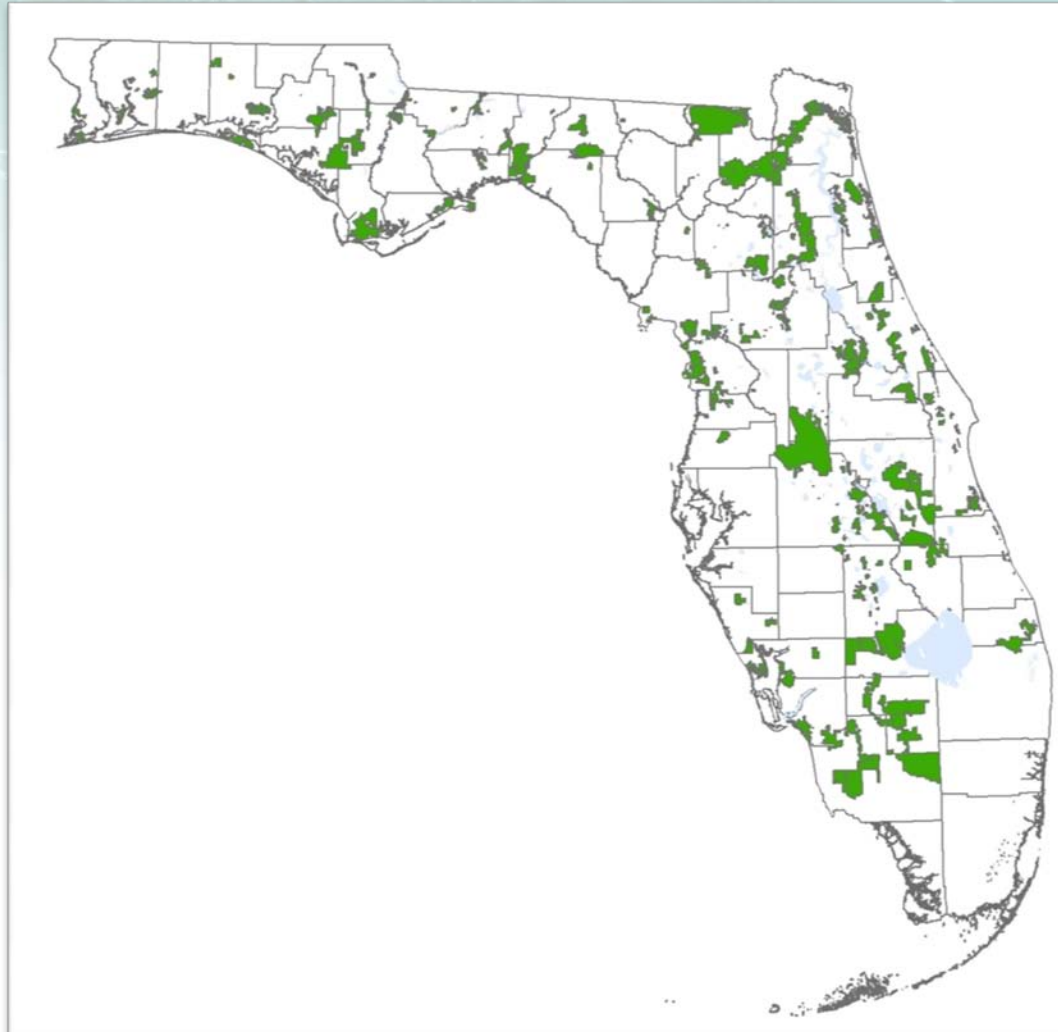
Interactive Map

www.fnai.org/conservationlands.cfm

Florida Forever Land Acquisition Projects



- Boundaries of projects administered by DEP for the State Board of Trustees (BOT)
- Portions of projects may have been acquired
- Updated every two to four months



Florida Forever Land Acquisition Projects



Downloadable shapefile: [FFBOT.shp](#)

www.fnai.org/gisdata.cfm

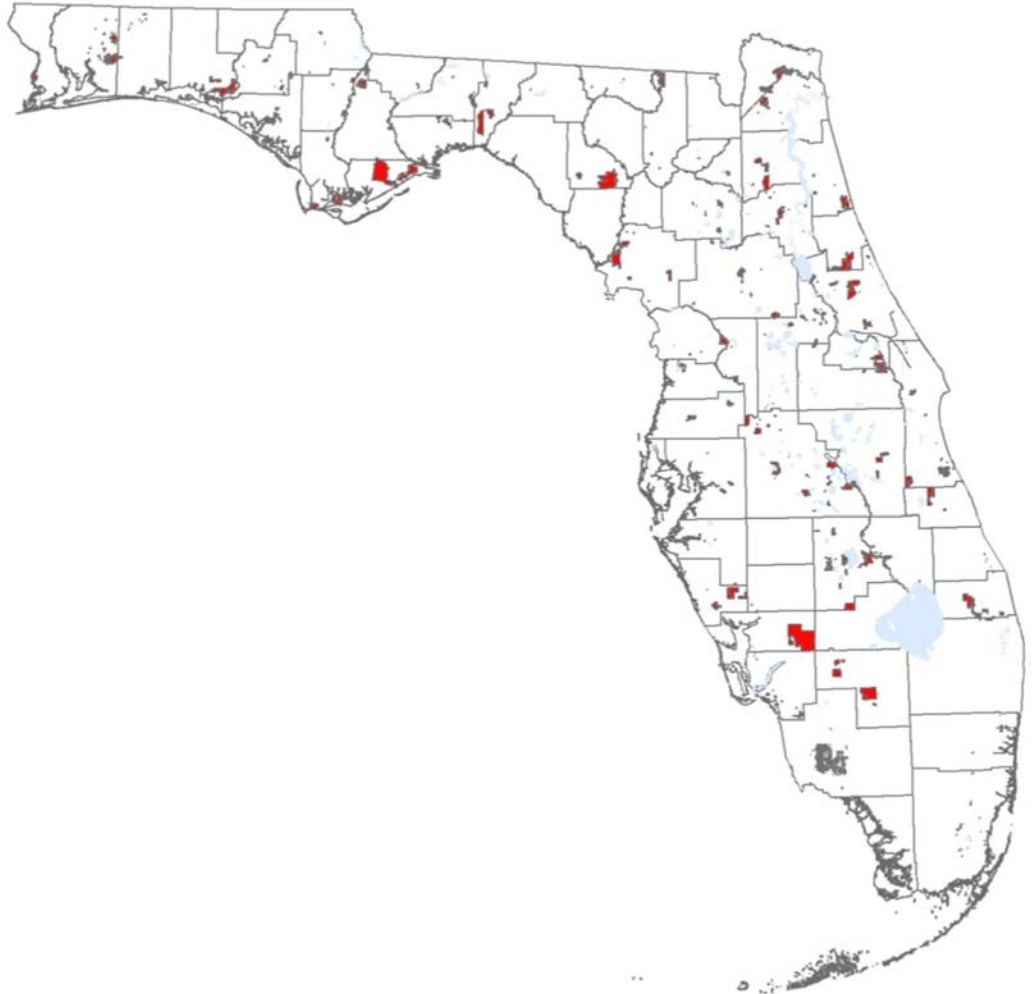
Interactive Map

www.fnai.org/conservationlands.cfm

Florida Forever Acquisitions



- Parcels acquired with Florida Forever Funding
- Subset of Florida Conservation Lands
- Updated twice a year
- Now includes FCT acquisitions



Florida Forever Acquisitions



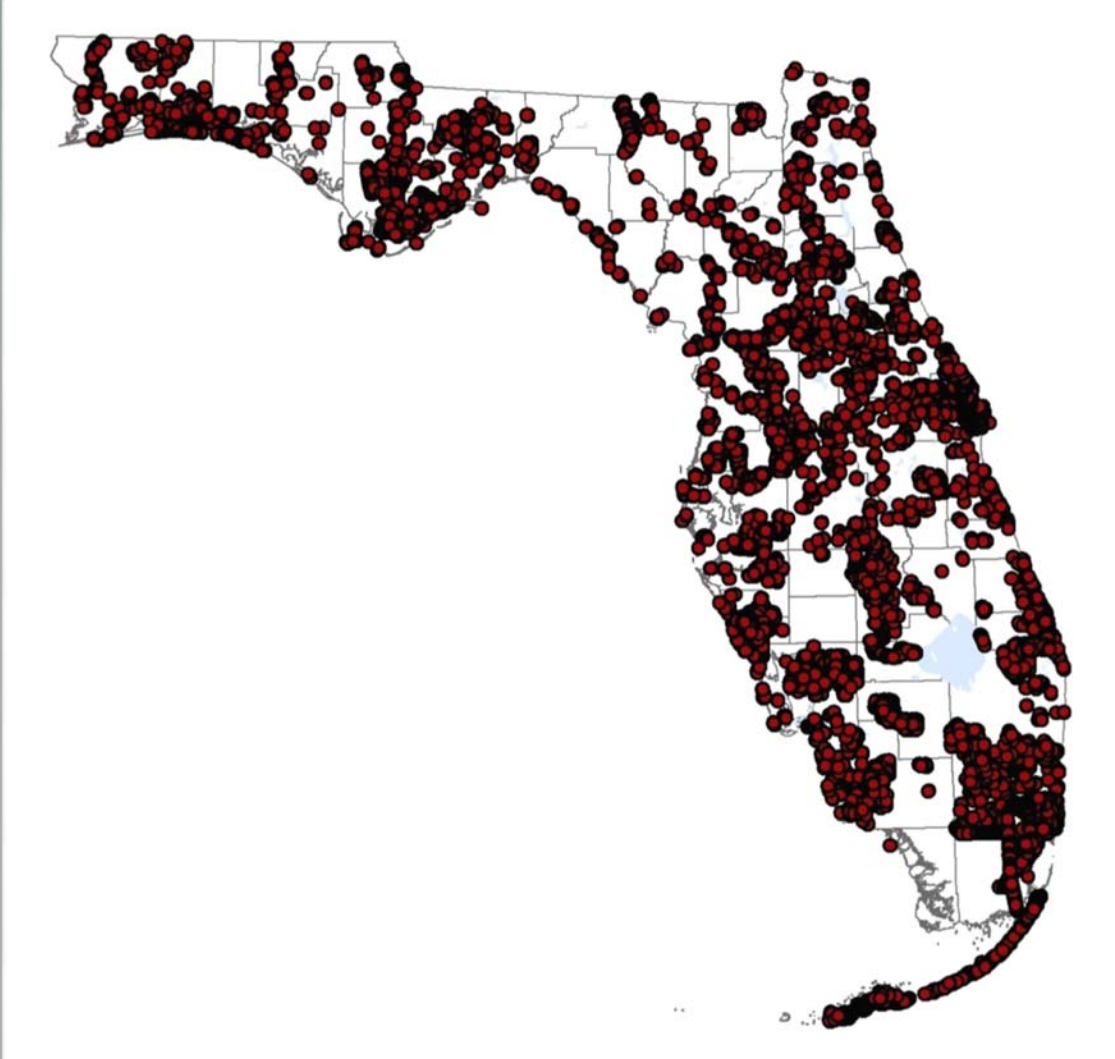
Downloadable shapefile: FF_Acquired.shp

www.fnai.org/gisdata.cfm

Florida Invasive Plants



- Locations of invasive exotic plants on conservation lands
- Updated quarterly



Florida Invasive Plants



Downloadable shapefile: FLInv.shp

www.fnai.org/invasivespecies.cfm

Interactive Map: iMAPInvasives

www.imapinvasives.org/

FNAI Biodiversity Matrix Map Server



- Online screening tool
- Immediate, free access to rare species occurrence information

FLORIDA Natural Areas INVENTORY

biodiversity matrix

Map Zoom

LEON Go

to City Go

Layers

- Conservation Lands
- Biodiversity Matrix
- Township/Range/Section
- USGS Quads
- Aerial Photography 2004

Zoom

+ in

units visible

- out

Step 1: Find your site. Navigate to your site using the "Zoom to City" (or county) automated functions or through manual zoom and pan commands. Be sure to zoom in close enough for the Matrix Units to appear.

Step 2: Selecting Matrix Units. Click the pencil icon to begin selecting Matrix Units. (Click once to select, click again to deselect)

Step 3: View results for 1 selected units. Maximum of 10 units per report.

clear entire selection

view legend

FLORIDA Natural Areas INVENTORY

FNAI Biodiversity Matrix Map Server

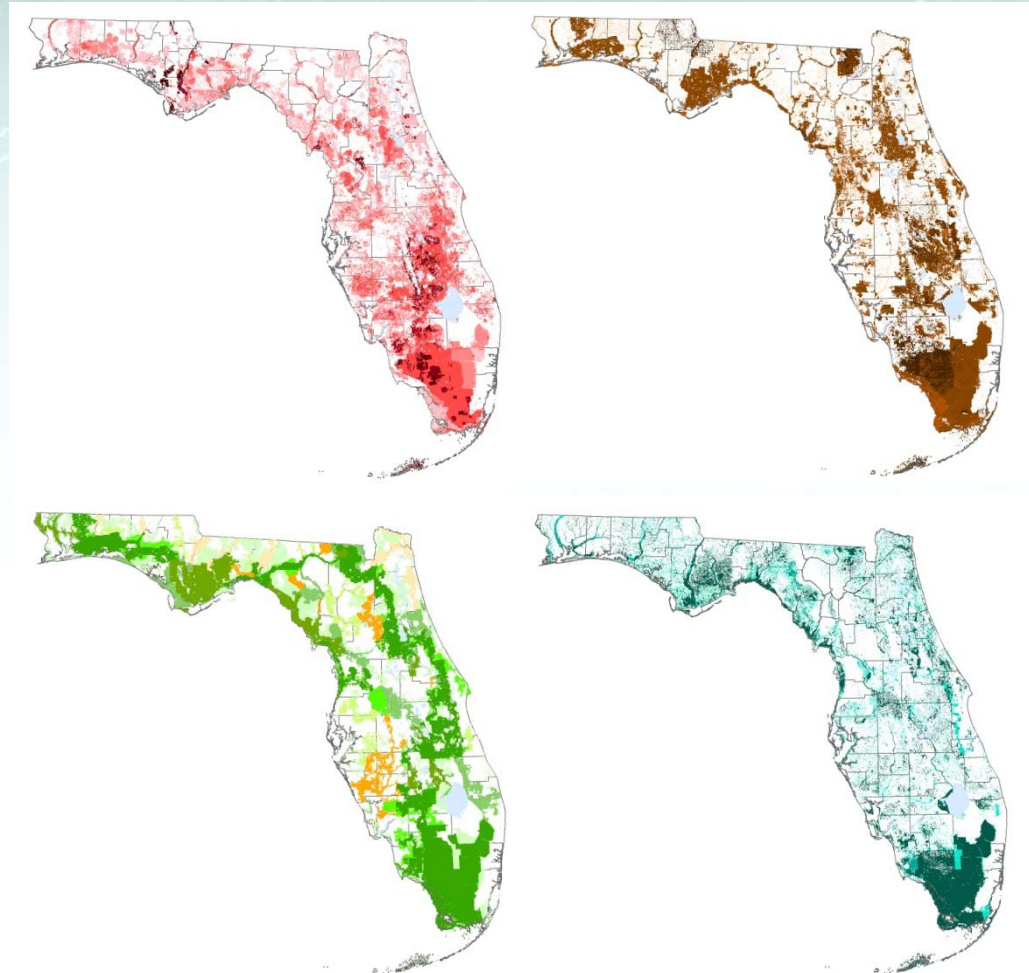


www.fnai.org/biointro.cfm

Florida Forever Conservation Needs Assessment Data



- 13 Natural Resource data layers
- Represent Florida Forever Goals and Measures
- Includes data developed by FNAI, FWC, Univ. Florida, & others



Florida Forever Conservation Needs Assessment Data



Downloadable raster GRIDS:

www.fnai.org/FlForever.cfm

Critical Lands and Waters Identification Project (CLIP)



- Lands and waters critical to conservation of Florida's natural resources
- Developed for Century Commission and FWC Cooperative Conservation Blueprint
- CLIP 2.0 will be available later this summer



Critical Lands and Waters Identification Project (CLIP)



Downloadable GDB or raster:

<http://www.fnai.org/LandCover.cfm>



Cooperative Land Cover Map v1.1

- Hybrid land cover map from existing sources and aerial photo review
- Most of state based on land use / land cover from WMDs and DEP
- Other sources include detailed ground-truth data and aerial photo review
- Based on new classification from FWC
- Best use of data: conservation planning



Cooperative Land Cover Map v1.1

Downloadable raster & shape:

<http://www.fnai.org/LandCover.cfm>

Contact Information

850-224-8207



Conservation Lands and Florida Forever Projects

Sally Jue, Conservation Lands Biologist

sjue@fnai.org

Biodiversity Matrix & CLIP

Jon Oetting, Conservation Planner

joetting@fnai.org

Conservation Needs Assessment, CLC, & other projects

Amy Knight, GIS Program Specialist

aknight@fnai.org

Easy questions

Mike O'Brien, GIS Analyst

mobrien@fnai.org