

ICS 204 - Assignment List

Incident: Mississippi Canyon 252 **Prepared By:** Barrett, Roy **at** 5/12/2010 09:39

Period: Period 23 (5/13/2010 06:00 - 5/14/2010 06:00) **Branch:** Sector Mobile

Division/Group/Staging: FL Protection Group - Pensacola

Operations Personnel

Title	Name	Affiliation	Contact Number(s)
Mobile Operations Section Chief	Pfannstiel, Robert	BP	562-572-3977
Safety Officer	Foreman, Shawn	BP	713-705-3190
Florida Branch Director	Delozier, Mark/ Popovice, Jerry	O'Briens	337-499-6025
Deputy Branch Director Pensacola	Bensen, Pete/Turner, Sid	O'Briens	713-503-5056

Resources Required

Area of Operation	Resource Type	Description	Quantity	Size
FL Protection Group - Pensacc	Manpower: Responder		500 each	
FL Protection Group - Pensacc	Manpower: Supervisor		43 each	
FL Protection Group - Pensacc	Vessel	Response Boat	23 each	- 29

Assignments

Maintain and deploy boom at the following divisions as outlined in Division Field Assignments:

- Escambia Division 1 - Assignments
- Escambia Division 2 - Assignments
- Escambia Division 3 - Assignments
- Okaloosa Division 1 - Assignments
- Okaloosa Division 2 - Assignments

Special Instructions for Division / Group

Notify the IC if:

- MISHAP/injury
- oiled wildlife
- media issues
- VIP visits/requests
- waterways issues
- oil impacts baeches/communities

Pi/Safety Officers report in at 251-445-8949

10:00

14:00

return to ICP at 17:30

Special Environmental Considerations

All personnel must report marine mammal/turtle sightings to the Wildlife Reporting Hotline: 1-866-557-1401

Manage waste in accordance with area-specific Waste Management Plan.

Be aware that marine mammals have been spotted in the area and that Sea Turtles are nesting April-September. Terns & Nesting Shorebird area. Piping Plover threatened species known to be in area. Avoid damage to seagrass beds.

Reviewed By Signatures - (PSC):

(OSC):

ICS 204 - Assignment List

Incident: Mississippi Canyon 252 **Prepared By:** Barrett, Roy **at** 5/12/2010 09:39

Period: Period 23 (5/13/2010 06:00 - 5/14/2010 06:00) **Branch:** Sector Mobile

Division/Group/Staging: FL Protection Group - Pensacola

Special Site-Specific Safety Considerations

PRE-TASK SAFETY

- All incidents shall be immediately reported to your supervisor. These include but are not limited to near misses, first aids, recordable injuries, security breaches, loss of primary containment, etc.
- Onsite foreman is responsible for daily accountability of personnel under their direction.
- Onsite foreman should review emergency action plan with personnel for day's activities.
- Everyone has the obligation to stop work that is unsafe.
- A JSEA shall be completed prior to beginning work.

PROJECT SAFETY

- A spotter should be used whenever working around heavy equipment such as forklifts, backhoes, bulldozers, etc.
- Understand and communicate proper use of cranes and booms.
- Appropriate procedures for handling waste or contaminated material will be required.

PERSONAL SAFETY

- All appropriate PPE shall be worn when necessary and appropriate (i.e., hard hat when overhead hazards are present; high visibility safety vest, PFD's; hearing protection; safety glasses; sunscreen, long sleeves, hats, etc.).
- Personnel shall be aware of body and hand positioning. Specific hand hazards should be identified on the JSEA.
- All personnel should be aware of slip, trip and fall hazards.
- Practice proper housekeeping and equipment stowage practices.
- Use appropriate lifting techniques.
- PFDs shall be inspected prior to departure and worn if working on water (i.e. boat, dock, etc.).
- All personnel working with chemicals or contaminated materials shall review the applicable MSDS and wear appropriate PPE.

•All personnel shall take appropriate breaks in order to prevent fatigue. All personnel shall protect themselves from severe weather.

- Each person shall drink plenty of fluids to stay hydrated.
- Shade/cover from direct sun should be provided within reasonable access to work areas.
- Personnel shall be aware of potentially stinging or biting insects and reptiles and take the necessary precautions.
- Personnel shall not eat or drink while in contaminated work zones.
- NO SMOKING unless in a designated area. Personnel must be aware of the location of flammable materials (e.g., fuel and flammable material storage areas, flammable contaminated materials, hay bales, crude oil, etc.) Strict adherence to the smoking policy is required.

TRANSPORTATION SAFETY

- All vessels at a minimum must meet the Federal USCG requirements (i.e., fire extinguisher, PFDs, throwable PFD, lights, visual distress signals, sound producing devices, etc.).
- It is important to drive carefully while going about your response duties. Drowsiness is a problem that significantly increases a driver's risk of an accident.
- Do not use a cell phone while operating/driving and must wear a seat belt if provided.
- For "Pre-Oil Landfall" debris removal activities, see the Shoreline Beach Cleanup 208 site safety plan (see attachment to Form 204).

COMMUNICATION

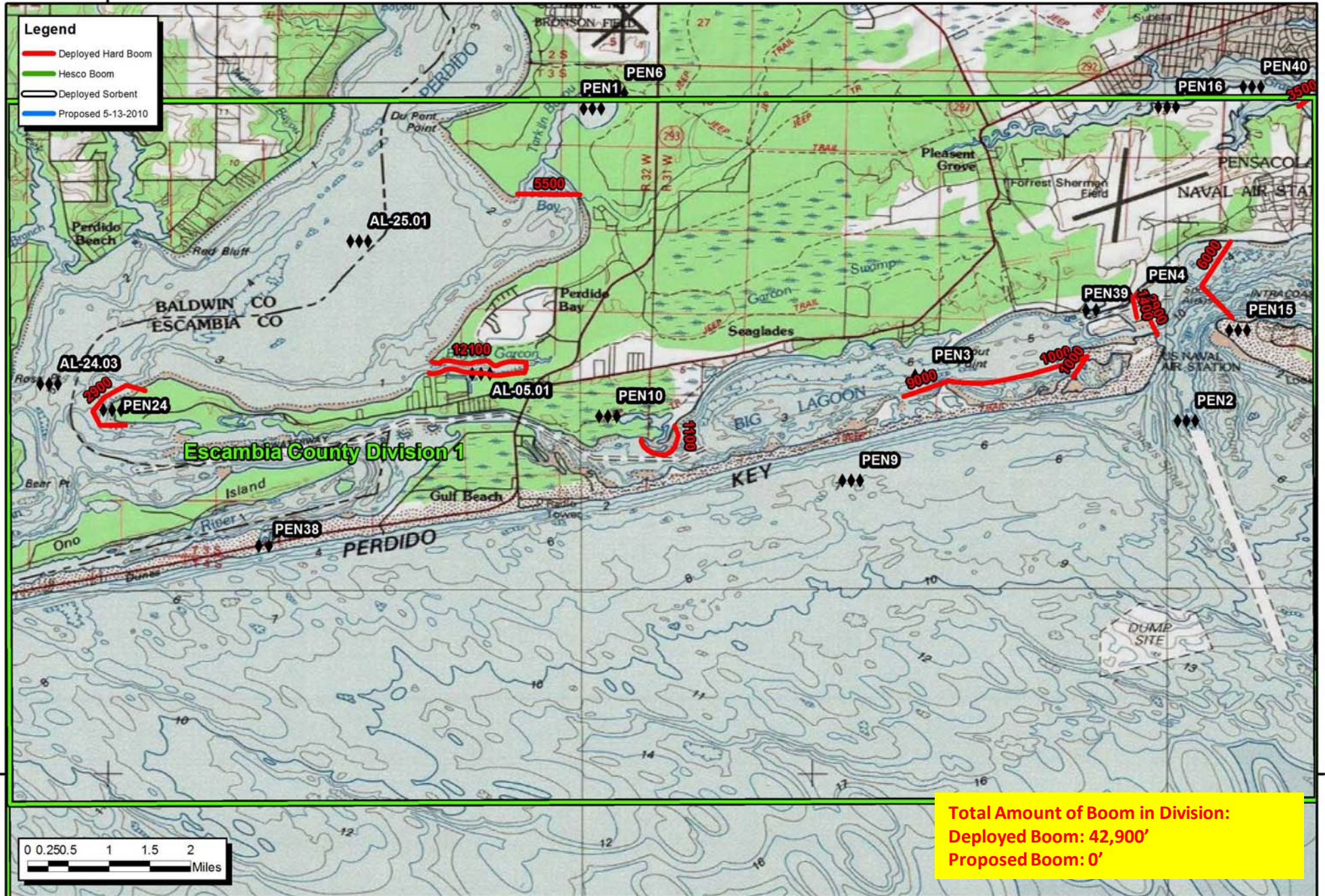
- Review communication procedures prior to each task.
- Ensure communication equipment is in working order.
- Review Hand Signals with all response personnel.
- Review warning sirens and alarms daily.
- Check posting/location of first aid and medical support.
- Identify muster locations daily or as work area advances.
- Do not use cell phone while driving, operating equipment or other tasks requiring full attention (e.g., power tools, cutting, etc).
- Per 208 Site Safety Plan dial 911 for emergency assistance.

Reviewed By Signatures - (PSC):

(OSC):

Deepwater Horizon Escambia County Division 1 May 12, 2010 18:00

- Legend**
- Deployed Hard Boom
 - Hesco Boom
 - Deployed Sorbent
 - Proposed 5-13-2010



Total Amount of Boom in Division:
Deployed Boom: 42,900'
Proposed Boom: 0'

ICS 204 - Assignment List

Incident: Mississippi Canyon 252 **Prepared By:** Barrett, Roy **at** 5/12/2010 09:37

Period: Period 23 (5/13/2010 06:00 - 5/14/2010 06:00) **Branch:** Sector Mobile

Division/Group/Staging: Escambia County Div 1 - Perdido Bay

Operations Personnel

Title	Name	Affiliation	Contact Number(s)
Operations Section Chief	Pfannstiel, Robert	BP	562-572-3977
Florida Branch Director	Delozier, Mark/Popovice, Jerry	O'Briens	907-831-0686
Eastern Operations Deputy Section	Vassallo, G.G.	Obriens	409-771-3623
Pensacola NAS Deputy Branch Dire	Benson, Pete/Turner, Sid	O'Briens	218-343-1020
Escambia Div 1 -Perdido Bay - Supr	Junicek, Walter		

Resources Required

Area of Operation	Resource Type	Description	Quantity	Size
Escambia County Div 1 - Perdi	Boom		45100 feet	

Assignments

Maintain and continue boom deployments as weather permits.

Maintain 3,900' of Navy Supsalv protection boom and 7,600' of contractor boom to protect NASP and Pensacola Bay shoreline as needed.

PEN 15-A.1 - Maintain 6,000' of protection boom from tip of Fort Pickens National Park north to mainland near airport to exclude oil from entering Pensacola Bay (Begin Lat: 30.331 Long. -87.300 and End Lat. 30.344 Long. -87.300).

PEN 39-A.2 - Maintain 3,000' of exclusion boom along the west side of entrance into Pensacola Bay north to Sherman Inlet at Pensacola Naval Complex to exclude oil from entering Big Lagoon (Begin Lat: 30.328 Long. -87.313 and End Lat. 30.335 Long. -87.317).

Note: Maintain boom as depicted on W.FL-5 Map in approved "Sector Mobile Tier One Booming Strategy for Florida".

Special Instructions for Division / Group

Notify the IC if:

- MISHAP/injury
- oiled wildlife
- media issues
- VIP visits/requests
- waterways issues
- oil impacts baeches/communities

Pi/Safety Officers report in at 251-445-8949

10:00

14:00

return to ICP at 17:30

Location of Work

Florida State Line to Port St. Joe, FL
Operations support and coordination from Pensacola Staging Site

Reviewed By Signatures - (PSC):

(OSC):

ICS 204 - Assignment List

Incident: Mississippi Canyon 252	Prepared By: Barrett, Roy at 5/12/2010 09:37
---	--

Period: Period 23 (5/13/2010 06:00 - 5/14/2010 06:00)	Branch: Sector Mobile
--	------------------------------

Division/Group/Staging: Escambia County Div 1 - Perdido Bay

Special Environmental Considerations

Perdido Key State Park. Gulf Islands National Seashore.
Survey areas for oiled or distressed birds or other animals, as well as any marine mammals and turtles. Record GPS location, attempt to get a picture and report immediately to the Wildlife Reporting Hotline: 1-866-557-1401. Do NOT attempt to recover, capture or handle any affected wildlife. Only trained technicians and licensed wildlife rehab contractors are permitted to capture and handle wildlife. Area is known habitat for threatened or endangered species such as sea turtles, terns and plovers and is also nesting habitat for shorebirds and terns. Seagrass beds known nursery grounds for Gulf sturgeon. Please report any signs of spills/sheens to 1-866-448-5816. Please call 251-583-0804 or 251-583-0801 (Daytime) or 251-583-0791 (Nighttime) for all Waste Management resources.

Reviewed By Signatures - (PSC):

(OSC):

ICS 204 - Assignment List

Incident: Mississippi Canyon 252 **Prepared By:** Barrett, Roy **at** 5/12/2010 09:37

Period: Period 23 (5/13/2010 06:00 - 5/14/2010 06:00) **Branch:** Sector Mobile

Division/Group/Staging: Escambia County Div 1 - Perdido Bay

Special Site-Specific Safety Considerations

PRE-TASK SAFETY

- All incidents shall be immediately reported to your supervisor. These include but are not limited to near misses, first aids, recordable injuries, security breaches, loss of primary containment, etc.
- Onsite foreman is responsible for daily accountability of personnel under their direction.
- Onsite foreman should review emergency action plan with personnel for day's activities.
- Everyone has the obligation to stop work that is unsafe.
- A JSEA shall be completed prior to beginning work.

PROJECT SAFETY

- A spotter should be used whenever working around heavy equipment such as forklifts, backhoes, bulldozers, etc.
- Understand and communicate proper use of cranes and booms.
- Appropriate procedures for handling waste or contaminated material will be required.

PERSONAL SAFETY

- All appropriate PPE shall be worn when necessary and appropriate (i.e., hard hat when overhead hazards are present; high visibility safety vest, PFD's; hearing protection; safety glasses; sunscreen, long sleeves, hats, etc.).
- Personnel shall be aware of body and hand positioning. Specific hand hazards should be identified on the JSEA.
- All personnel should be aware of slip, trip and fall hazards.
- Practice proper housekeeping and equipment stowage practices.
- Use appropriate lifting techniques.
- PFDs shall be inspected prior to departure and worn if working on water (i.e. boat, dock, etc.).
- All personnel working with chemicals or contaminated materials shall review the applicable MSDS and wear appropriate PPE.

•All personnel shall take appropriate breaks in order to prevent fatigue. All personnel shall protect themselves from severe weather.

- Each person shall drink plenty of fluids to stay hydrated.
- Shade/cover from direct sun should be provided within reasonable access to work areas.
- Personnel shall be aware of potentially stinging or biting insects and reptiles and take the necessary precautions.
- Personnel shall not eat or drink while in contaminated work zones.
- NO SMOKING unless in a designated area. Personnel must be aware of the location of flammable materials (e.g., fuel and flammable material storage areas, flammable contaminated materials, hay bales, crude oil, etc.) Strict adherence to the smoking policy is required.

TRANSPORTATION SAFETY

- All vessels at a minimum must meet the Federal USCG requirements (i.e., fire extinguisher, PFDs, throwable PFD, lights, visual distress signals, sound producing devices, etc.).
- It is important to drive carefully while going about your response duties. Drowsiness is a problem that significantly increases a driver's risk of an accident.
- Do not use a cell phone while operating/driving and must wear a seat belt if provided.
- For "Pre-Oil Landfall" debris removal activities, see the Shoreline Beach Cleanup 208 site safety plan (see attachment to Form 204).

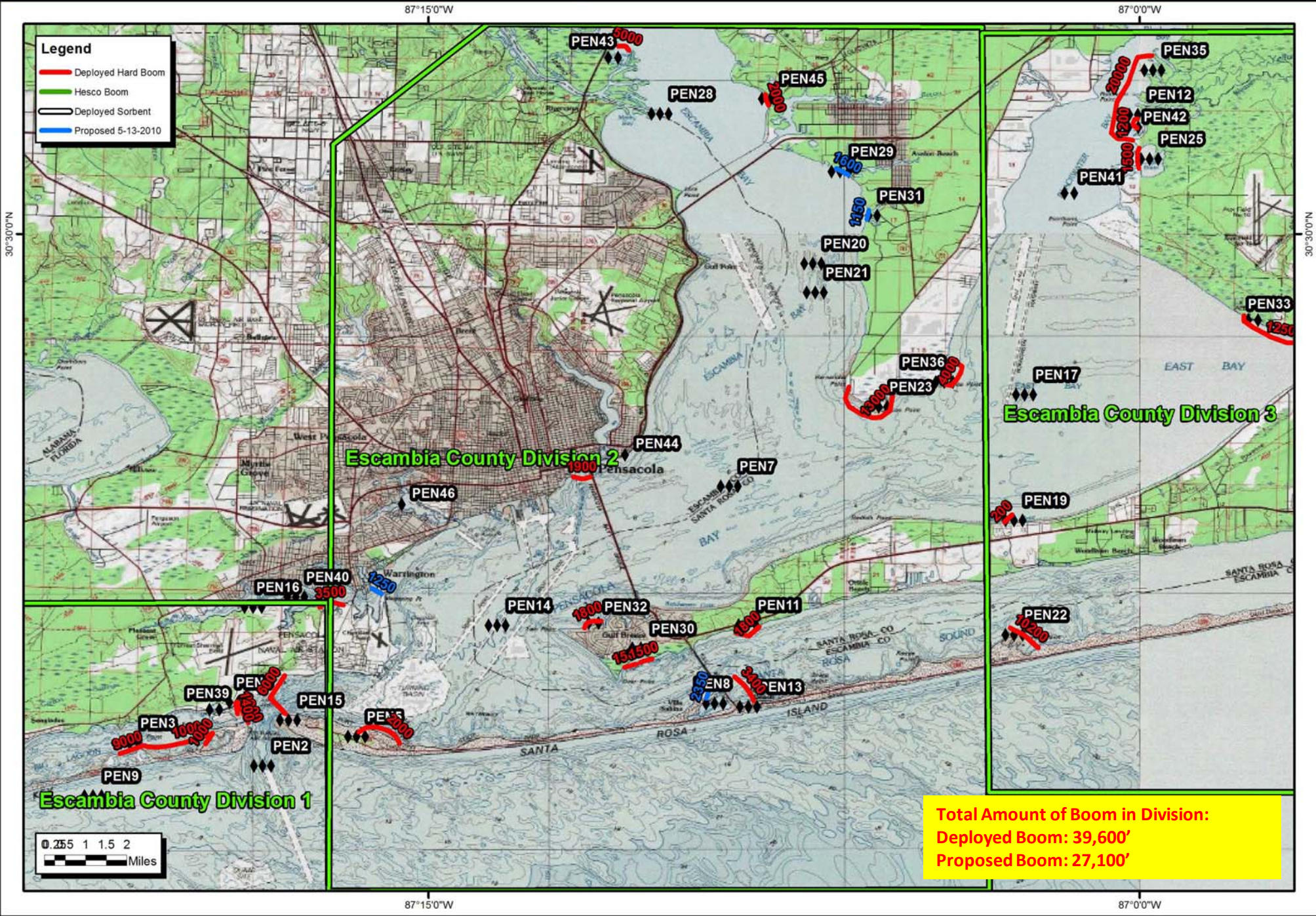
COMMUNICATION

- Review communication procedures prior to each task.
- Ensure communication equipment is in working order.
- Review Hand Signals with all response personnel.
- Review warning sirens and alarms daily.
- Check posting/location of first aid and medical support.
- Identify muster locations daily or as work area advances.
- Do not use cell phone while driving, operating equipment or other tasks requiring full attention (e.g., power tools, cutting, etc).
- Per 208 Site Safety Plan dial 911 for emergency assistance.

Reviewed By Signatures - (PSC):

(OSC):

Deepwater Horizon Escambia County Division 2 May 12, 2010 18:00



Total Amount of Boom in Division:
 Deployed Boom: 39,600'
 Proposed Boom: 27,100'

ICS 204 - Assignment List

Incident: Mississippi Canyon 252	Prepared By: Barrett, Roy at 5/12/2010 09:40
Period: Period 23 (5/13/2010 06:00 - 5/14/2010 06:00)	Branch: Sector Mobile
Division/Group/Staging: Escambia County Div 2 - Santa Rosa/Pensacol	

Operations Personnel

Title	Name	Affiliation	Contact Number(s)
Operations Section Chief	Pfannstiel, Robert	BP	562-572-3977
Safety Officer	Foreman, Shawn	BP	713-705-3190
Eastern Operations Deputy Section	Vassallo, G.G.	Obriens	409-771-3623
Florida Branch Director	Delozier, Mark/Popovice, Jerry	O'Briens	907-831-0686
Pensacola NAS Deputy Branch Dire	Bensen, Pete/Turner, Sid	O'Briens	713-503-5056
Escambia Div 2 -Perdido Bay - Supr	Watson, Earnie	Eagle/SWS	

Resources Required

Area of Operation	Resource Type	Description	Quantity	Size
Escambia County Div 2 - Sant	Boom		65000 feet	

Assignments

Maintain boom deployment as weather permits.
 PEN-23 - Garcon Point Salt Marsh - Div 2 - 10,000' of protection boom
 PEN-45 - Mullato Bayou - Div 2 - 2,000' of protection boom
 PEN-21 - Central Oyster Bed Reef - Div 2 - 9,500' of protection boom - On hold due to Oyster Bed restriction
 PEN-17 - NE Oyster Bay - Div 2 - 11,000' of protection boom - On hold due to Oyster Bed restriction

Special Instructions for Division / Group

Notify the IC if:

- MISHAP/injury
- oiled wildlife
- media issues
- VIP visits/requests
- waterways issues
- oil impacts baeches/communities

Pi/Safety Officers report in at 251-445-8949
 10:00
 14:00
 return to ICP at 17:30

Location of Work

Operations support and coordination from Pensacola Staging Site

Reviewed By Signatures - (PSC):

(OSC):

ICS 204 - Assignment List

Incident: Mississippi Canyon 252	Prepared By: Barrett, Roy at 5/12/2010 09:40
Period: Period 23 (5/13/2010 06:00 - 5/14/2010 06:00)	Branch: Sector Mobile
Division/Group/Staging: Escambia County Div 2 - Santa Rosa/Pensacol	

Special Environmental Considerations

Perdido Key State Park. Gulf Islands National Seashore.
Survey areas for oiled or distressed birds or other animals, as well as any marine mammals and turtles. Record GPS location, attempt to get a picture and report immediately to the Wildlife Reporting Hotline: 1-866-557-1401. Do NOT attempt to recover, capture or handle any affected wildlife. Only trained technicians and licensed wildlife rehab contractors are permitted to capture and handle wildlife. Area is known habitat for threatened or endangered species such as sea turtles, terns and plovers and is also nesting habitat for shorebirds and terns. Seagrass beds known nursery grounds for Gulf sturgeon. Please report any signs of spills/sheens to 1-866-448-5816. Please call 251-583-0804 or 251-583-0801 (Daytime) or 251-583-0791 (Nighttime) for all Waste Management resources.

Reviewed By Signatures - (PSC):

(OSC):

ICS 204 - Assignment List

Incident: Mississippi Canyon 252	Prepared By: Barrett, Roy at 5/12/2010 09:40
Period: Period 23 (5/13/2010 06:00 - 5/14/2010 06:00)	Branch: Sector Mobile
Division/Group/Staging: Escambia County Div 2 - Santa Rosa/Pensacol	

Special Site-Specific Safety Considerations

PRE-TASK SAFETY

- All incidents shall be immediately reported to your supervisor. These include but are not limited to near misses, first aids, recordable injuries, security breaches, loss of primary containment, etc.
- Onsite foreman is responsible for daily accountability of personnel under their direction.
- Onsite foreman should review emergency action plan with personnel for day's activities.
- Everyone has the obligation to stop work that is unsafe.
- A JSEA shall be completed prior to beginning work.

PROJECT SAFETY

- A spotter should be used whenever working around heavy equipment such as forklifts, backhoes, bulldozers, etc.
- Understand and communicate proper use of cranes and booms.
- Appropriate procedures for handling waste or contaminated material will be required.

PERSONAL SAFETY

- All appropriate PPE shall be worn when necessary and appropriate (i.e., hard hat when overhead hazards are present; high visibility safety vest, PFD's; hearing protection; safety glasses; sunscreen, long sleeves, hats, etc.).
- Personnel shall be aware of body and hand positioning. Specific hand hazards should be identified on the JSEA.
- All personnel should be aware of slip, trip and fall hazards.
- Practice proper housekeeping and equipment stowage practices.
- Use appropriate lifting techniques.
- PFDs shall be inspected prior to departure and worn if working on water (i.e. boat, dock, etc.).
- All personnel working with chemicals or contaminated materials shall review the applicable MSDS and wear appropriate PPE.

•All personnel shall take appropriate breaks in order to prevent fatigue. All personnel shall protect themselves from severe weather.

- Each person shall drink plenty of fluids to stay hydrated.
- Shade/cover from direct sun should be provided within reasonable access to work areas.
- Personnel shall be aware of potentially stinging or biting insects and reptiles and take the necessary precautions.
- Personnel shall not eat or drink while in contaminated work zones.
- NO SMOKING unless in a designated area. Personnel must be aware of the location of flammable materials (e.g., fuel and flammable material storage areas, flammable contaminated materials, hay bales, crude oil, etc.) Strict adherence to the smoking policy is required.

TRANSPORTATION SAFETY

- All vessels at a minimum must meet the Federal USCG requirements (i.e., fire extinguisher, PFDs, throwable PFD, lights, visual distress signals, sound producing devices, etc.).
- It is important to drive carefully while going about your response duties. Drowsiness is a problem that significantly increases a driver's risk of an accident.
- Do not use a cell phone while operating/driving and must wear a seat belt if provided.
- For "Pre-Oil Landfall" debris removal activities, see the Shoreline Beach Cleanup 208 site safety plan (see attachment to Form 204).

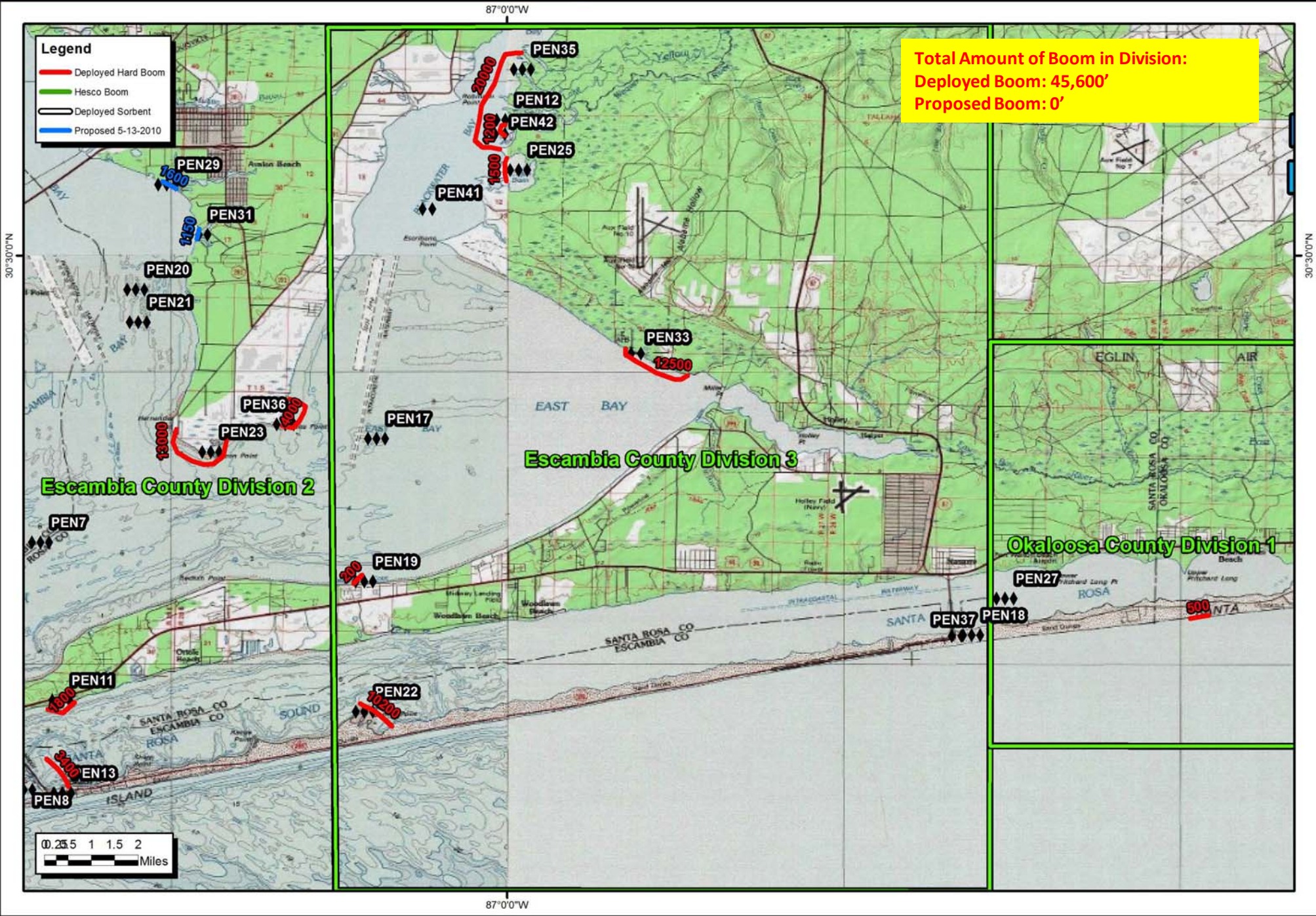
COMMUNICATION

- Review communication procedures prior to each task.
- Ensure communication equipment is in working order.
- Review Hand Signals with all response personnel.
- Review warning sirens and alarms daily.
- Check posting/location of first aid and medical support.
- Identify muster locations daily or as work area advances.
- Do not use cell phone while driving, operating equipment or other tasks requiring full attention (e.g., power tools, cutting, etc).
- Per 208 Site Safety Plan dial 911 for emergency assistance.

Reviewed By Signatures - (PSC):

(OSC):

Deepwater Horizon
Escambia County Division 3
May 12, 2010 18:00



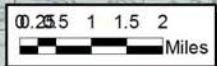
Total Amount of Boom in Division:
Deployed Boom: 45,600'
Proposed Boom: 0'

Legend
 Deployed Hard Boom
 Hesco Boom
 Deployed Sorbent
 Proposed 5-13-2010

Escambia County Division 2

Escambia County Division 3

Okaloosa County Division 1



87°0'0"W

87°0'0"W

30°30'0"N

30°30'0"N

ICS 204 - Assignment List

Incident: Mississippi Canyon 252 **Prepared By:** Barrett, Roy **at** 5/12/2010 09:43

Period: Period 23 (5/13/2010 06:00 - 5/14/2010 06:00) **Branch:** Sector Mobile

Division/Group/Staging: Escambia County Div 3 - Navarre Beach

Operations Personnel

Title	Name	Affiliation	Contact Number(s)
Mobile Operations Section Chief	Pfannstiel, Robert	BP	562-572-3977
Safety Officer	Foreman, Shawn	BP	713-705-3190
Eastern Operations Deputy Section	Vassallo, G.G.	Obriens	409-771-3623
Florida Branch Director	Delozier, Mark/Popovice, Jerry	O'Briens	907-831-0686
Pensacola NAS Deputy Branch Dire	Bensen, Pete/Turner, Sid	O'Briens	713-503-5056
Escambia Div 3 - Supervisor	Neel, Gene		

Resources Required

Area of Operation	Resource Type	Description	Quantity	Size
Escambia County Div 3 - Nava	Boom		56600 feet	

Assignments

Maintain boom deployments as weather permits.
 1. PEN-33 East Bay Sea Grass - Div 3 - 12,500'
 2. PEN-12 - 20,000' of protection boom

Special Instructions for Division / Group

Notify the IC if:

- MISHAP/injury
- oiled wildlife
- media issues
- VIP visits/requests
- waterways issues
- oil impacts baeches/communities

Pi/Safety Officers report in at 251-445-8949
 10:00
 14:00
 return to ICP at 17:30

Location of Work

Operations support and coordination from Pensacola Staging Site

Special Environmental Considerations

Survey areas for oiled or distressed birds or other animals, as well as any marine mammals and turtles. Record GPS location, attempt to get a picture and report immediately to the Wildlife Reporting Hotline: 1-866-557-1401. Do NOT attempt to recover, capture or handle any affected wildlife. Only trained technicians and licensed wildlife rehab contractors are permitted to capture and handle wildlife. Area is known habitat for threatened or endangered species such as sea turtles, terns and plovers and is also nesting habitat for shorebirds and terns. Seagrass beds known nursery grounds for Gulf sturgeon. Please report any signs of spills/sheens to 1-866-448-5816.

Reviewed By Signatures - (PSC):

(OSC):

ICS 204 - Assignment List

Incident: Mississippi Canyon 252 **Prepared By:** Barrett, Roy **at** 5/12/2010 09:43

Period: Period 23 (5/13/2010 06:00 - 5/14/2010 06:00) **Branch:** Sector Mobile

Division/Group/Staging: Escambia County Div 3 - Navarre Beach

Special Site-Specific Safety Considerations

PRE-TASK SAFETY

- All incidents shall be immediately reported to your supervisor. These include but are not limited to near misses, first aids, recordable injuries, security breaches, loss of primary containment, etc.
- Onsite foreman is responsible for daily accountability of personnel under their direction.
- Onsite foreman should review emergency action plan with personnel for day's activities.
- Everyone has the obligation to stop work that is unsafe.
- A JSEA shall be completed prior to beginning work.

PROJECT SAFETY

- A spotter should be used whenever working around heavy equipment such as forklifts, backhoes, bulldozers, etc.
- Understand and communicate proper use of cranes and booms.
- Appropriate procedures for handling waste or contaminated material will be required.

PERSONAL SAFETY

- All appropriate PPE shall be worn when necessary and appropriate (i.e., hard hat when overhead hazards are present; high visibility safety vest, PFD's; hearing protection; safety glasses; sunscreen, long sleeves, hats, etc.).
- Personnel shall be aware of body and hand positioning. Specific hand hazards should be identified on the JSEA.
- All personnel should be aware of slip, trip and fall hazards.
- Practice proper housekeeping and equipment stowage practices.
- Use appropriate lifting techniques.
- PFDs shall be inspected prior to departure and worn if working on water (i.e. boat, dock, etc.).
- All personnel working with chemicals or contaminated materials shall review the applicable MSDS and wear appropriate PPE.

•All personnel shall take appropriate breaks in order to prevent fatigue. All personnel shall protect themselves from severe weather.

- Each person shall drink plenty of fluids to stay hydrated.
- Shade/cover from direct sun should be provided within reasonable access to work areas.
- Personnel shall be aware of potentially stinging or biting insects and reptiles and take the necessary precautions.
- Personnel shall not eat or drink while in contaminated work zones.
- NO SMOKING unless in a designated area. Personnel must be aware of the location of flammable materials (e.g., fuel and flammable material storage areas, flammable contaminated materials, hay bales, crude oil, etc.) Strict adherence to the smoking policy is required.

TRANSPORTATION SAFETY

- All vessels at a minimum must meet the Federal USCG requirements (i.e., fire extinguisher, PFDs, throwable PFD, lights, visual distress signals, sound producing devices, etc.).
- It is important to drive carefully while going about your response duties. Drowsiness is a problem that significantly increases a driver's risk of an accident.
- Do not use a cell phone while operating/driving and must wear a seat belt if provided.
- For "Pre-Oil Landfall" debris removal activities, see the Shoreline Beach Cleanup 208 site safety plan (see attachment to Form 204).

COMMUNICATION

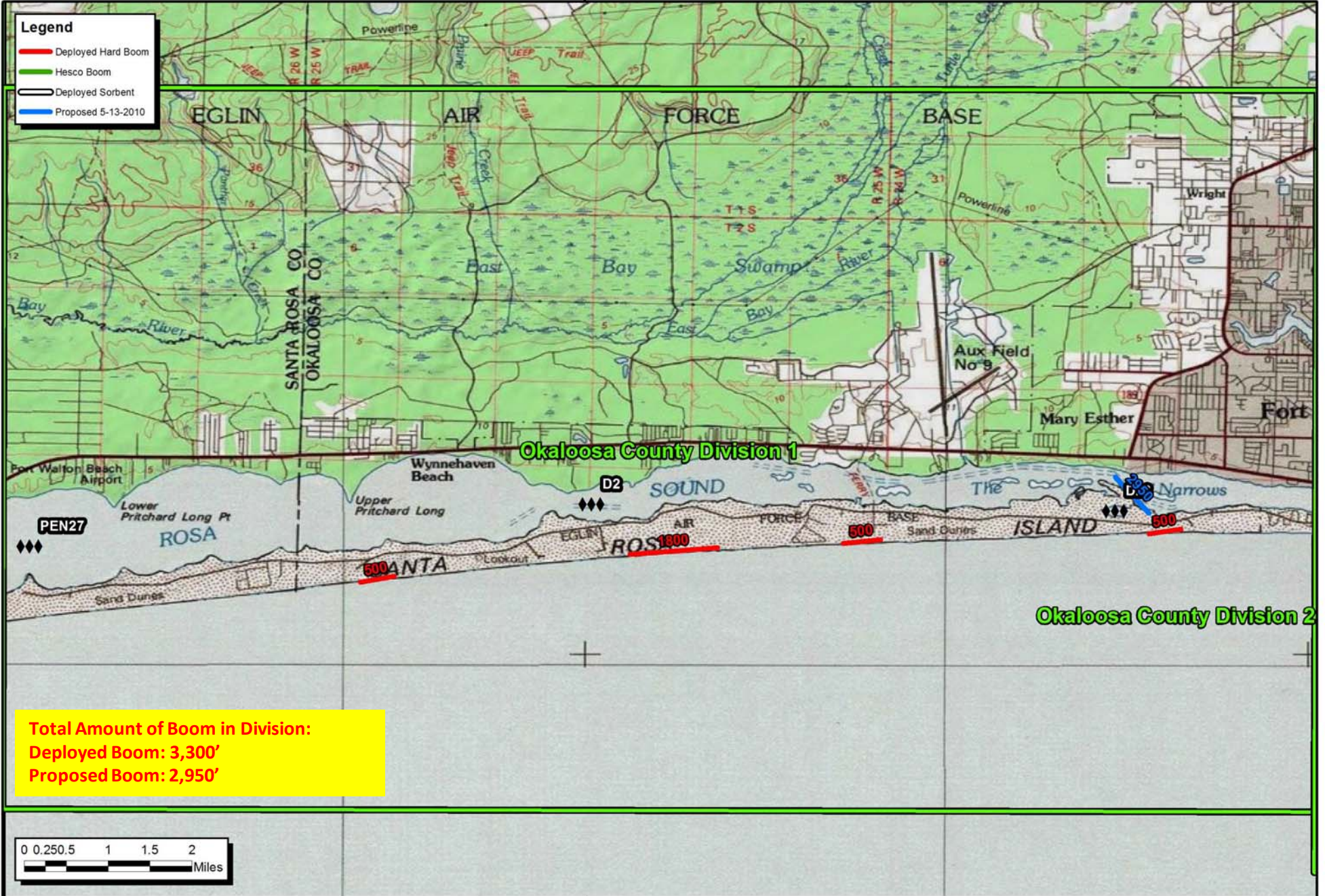
- Review communication procedures prior to each task.
- Ensure communication equipment is in working order.
- Review Hand Signals with all response personnel.
- Review warning sirens and alarms daily.
- Check posting/location of first aid and medical support.
- Identify muster locations daily or as work area advances.
- Do not use cell phone while driving, operating equipment or other tasks requiring full attention (e.g., power tools, cutting, etc).
- Per 208 Site Safety Plan dial 911 for emergency assistance.

Reviewed By Signatures - (PSC):

(OSC):

Deepwater Horizon
Okaloosa County Division 1
May 12, 2010 18:00

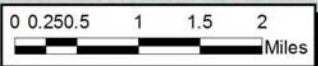
86°45'0"W



Legend

- Deployed Hard Boom
- Hesco Boom
- Deployed Sorbent
- Proposed 5-13-2010

Total Amount of Boom in Division:
Deployed Boom: 3,300'
Proposed Boom: 2,950'



86°45'0"W

ICS 204 - Assignment List

Incident: Mississippi Canyon 252 **Prepared By:** o'brian, david **at** 5/12/2010 09:44

Period: Period 23 (5/13/2010 06:00 - 5/14/2010 06:00) **Branch:** Sector Mobile

Division/Group/Staging: Okaloosa County Div 1 - Eglin Air Force Base

Operations Personnel

Title	Name	Affiliation	Contact Number(s)
Operations Section Chief	Pfannstiel, Robert	BP	562-572-3977
Safety Officer	Foreman, Shawn	BP	713-705-3190
Eastern Operations Deputy Section	Vassallo, G.G.	Obriens	409-771-3623
Florida Branch Director	DeLozier, Mark/Popovice, Jerry	O'Briens	907-831-0686
Pensacols NAS Deputy Branch Dire	Smith, Justin/Turner, Sid	O'Briens	
Supervisor - Okaloosa County Div 1	DeVik, Stefan	SWS	

Resources Required

Area of Operation	Resource Type	Description	Quantity	Size
Okaloosa County Div 1 - Eglin	Boom		3300 feet	

Assignments

Maintain boom and be prepared to deploy staged resources at the following ACP sites:

1. Stage 1,800' of deflection boom along shoreline on Island and deploy as required (Lat: 30.3886 Long. -86.783). Note: Deploy boom as depicted on W.FL-15 Map in approved "Sector Mobile Tier One Booming Strategy for Florida".
2. D28-A.1 - Stage 3 - 1,800' sections of deflection boom along shoreline on Santa Rosa Island and deploy as required. Note: Deploy boom as depicted on W.FL-16 Map in approved "Sector Mobile Tier One Booming Strategy for Florida".
 Boom #1 - Lat: 30.393 Long. -86.727
 Boom #2 - Lat: 30.395 Long. -86.698
 Boom #3 - Lat: 30.396 Long. -86.646
 Note: Deploy boom as depicted on W.FL-17 Map in approved "Sector Mobile Tier One Booming Strategy for Florida".

Location of Work

Operations support and coordination from Pensacola Staging Site

Special Environmental Considerations

All personnel must report marine mammal/turtle sightings to the Wildlife Reporting Hotline: 1-866-557-1401
 Manage waste in accordance with area-specific Waste Management Plan.
 Be aware that marine mammals have been spotted in the area and that Sea Turtles are nesting April-September. Terns & Nesting Shorebird area. Piping Plover threatened species known to be in area. Avoid damage to seagrass beds. Report spills and sheens 1-866-448-5816.

Reviewed By Signatures - (PSC):

(OSC):

ICS 204 - Assignment List

Incident: Mississippi Canyon 252 **Prepared By:** o'brian, david **at** 5/12/2010 09:44

Period: Period 23 (5/13/2010 06:00 - 5/14/2010 06:00) **Branch:** Sector Mobile

Division/Group/Staging: Okaloosa County Div 1 - Eglin Air Force Base

Special Site-Specific Safety Considerations

PRE-TASK SAFETY

- A JSEA shall be completed prior to beginning work.
- Onsite foreman is responsible for daily accountability of personnel under their direction.
- Onsite foreman should review emergency action plan with personnel for day's activities.
- All incidents shall be immediately reported to your supervisor. These include but are not limited to near misses, first aids, recordable injuries, security breaches, loss of primary containment, etc.
- Everyone has the obligation to stop work that is unsafe.

PROJECT SAFETY

- Insure you have the right tools for the task.
- A spotter should be used whenever working around heavy equipment such as forklifts, backhoes, bulldozers, etc.

PERSONAL SAFETY

- Personnel shall be aware of body and hand positioning.
- Specific HAND hazards should be identified on the JSEA and discussed prior to all tasks.
- Specific hand risk shall be identified on the JSEA
- All appropriate PPE shall be worn when necessary and appropriate (i.e., hard hat when overhead hazards are present; high visibility safety vests, PFD's; hearing protection; sunscreen, long sleeves, hats, etc.).
- PFDs shall be inspected prior to departure and worn if working on water (i.e. boat, dock, etc.).
- All personnel working with chemicals or contaminated materials shall review the applicable MSDS and wear appropriate PPE.

- All personnel shall take appropriate breaks in order to prevent fatigue.
- Each person shall drink plenty of fluids to stay hydrated.
- Shade/Cover from direct sun should be provided within reasonable access to work areas.
- All personnel shall protect themselves from severe weather.
- Personnel shall be aware of potentially stinging or biting insects and reptiles and take the necessary precautions.
- Personnel shall not eat or drink while in contaminated work zones.
- NO SMOKING unless in a designated area. Personnel must be made aware of the location of flammable materials including: fuel and flammable material storage areas, flammable contaminated materials, hay bales, crude oil, etc. Strict adherence to the smoking policy is required.

TRANSPORTATION SAFETY

- It is important to operate/drive carefully while going about your response duties. Drowsiness is a problem that significantly increases a driver's risk of an accident.
- Safe parking may not be available.
- Personnel shall not be using a cell phone while operating/driving and must wear a seat belt.
- For "Pre-Oil Landfall" debris removal activities, see the 208 site safety plan (see attachment to Form 204).

COMMUNICATION

- Review communication procedures prior to each task.
- Ensure communication equipment is in working order.
- Review Hand Signals with all response personnel.
- Review warning sirens and alarms daily.
- Check posting/location of first aid and medical support.
- Identify muster locations daily or as work area advances.
- Do not use cell phone while driving, operating equipment or other tasks requiring full attention (e.g., power tools, cutting, etc).
- Dial 911 for emergency assistance.

Reviewed By Signatures - (PSC):

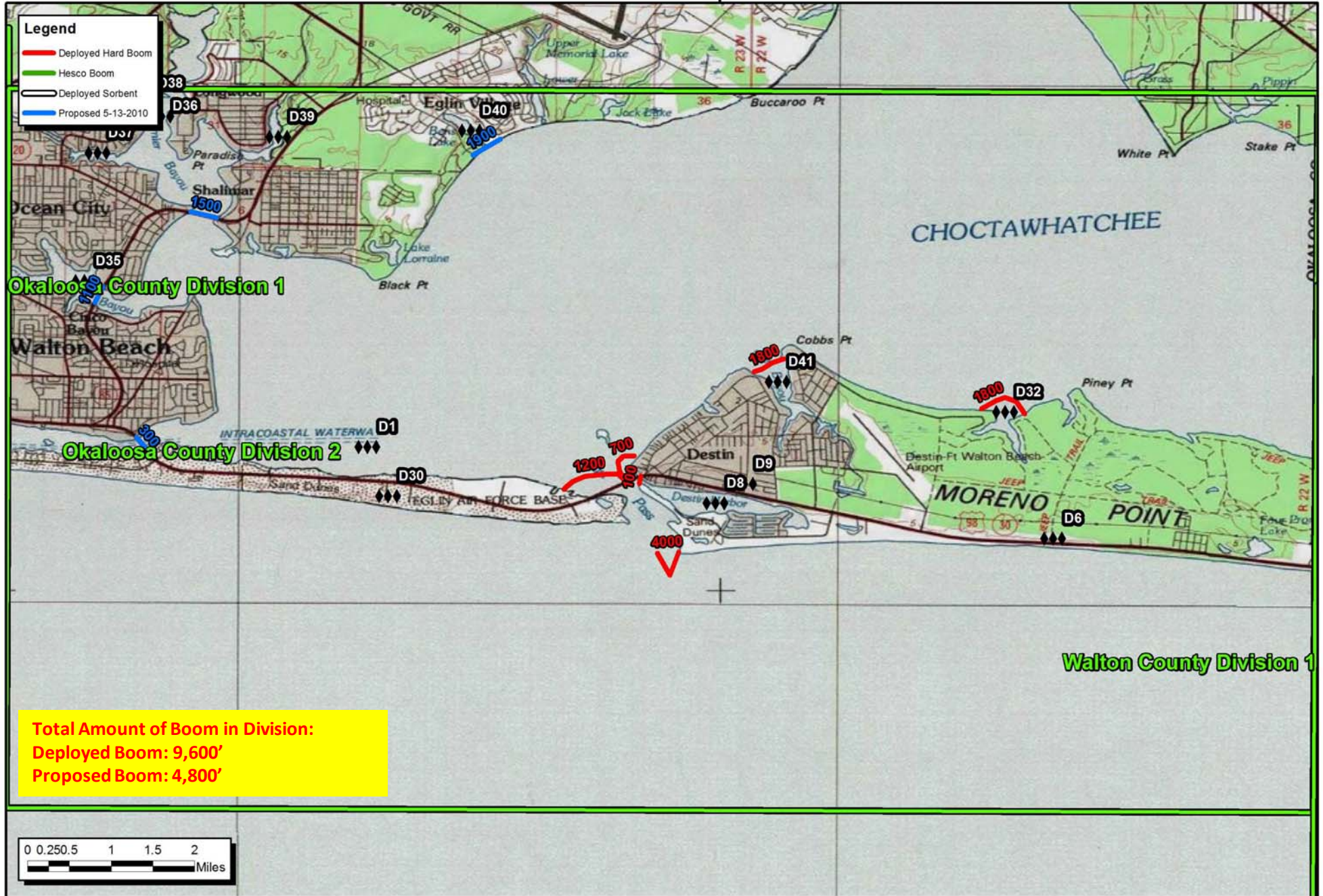
(OSC):

Deepwater Horizon
Okaloosa County Division 2
May 12, 2010 18:00

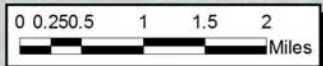


86°30'0"W

- Legend**
- Deployed Hard Boom
 - Hesco Boom
 - Deployed Sorbent
 - Proposed 5-13-2010



86°30'0"W



ICS 204 - Assignment List

Incident: Mississippi Canyon 252	Prepared By: o'brian, david at 5/12/2010 09:45
Period: Period 23 (5/13/2010 06:00 - 5/14/2010 06:00)	Branch: Sector Mobile
Division/Group/Staging: Okaloosa County Div 2 - Destin Harbor/Morenc	

Operations Personnel

Title	Name	Affiliation	Contact Number(s)
Operations Section Chief	Pfannstiel, Robert	BP	562-572-3977
Safety Officer	Foreman, Shawn	BP	713-705-3190
Eastern Operations Deputy Section	Vassallo, G.G.	Obriens	409-771-3623
Florida Branch Director	Delozier, Mark/Popovice, Jerry	O'Briens	907-831-0686
Pensacola NAS Deputy Branch Dire	Smith, Justin/Turner, Sid	O'Briens	
Supervisor - Okaloosa County Div 2	Chambers, Otis		

Resources Required

Area of Operation	Resource Type	Description	Quantity	Size
Okaloosa County Div 2 - Destii	Boom		9600 feet	

Assignments

Maintain boom deployments as weather permits.

1.D1-A.1 - Maintain 3,100' of exclusion boom in a Chevron configuration across the outer entrance of Destin Harbor from Santa Rosa Island east to Destin Beach to exclude oil from entering Choctawhatchee Bay (Lat: 30.381 Long. -86.5108). Deploy 3,800' of protection boom inside the harbor from back side of Santa Rosa Island to Causeway. Deploy 2,200' of exclusion boom from causeway heading east to Destin mainland. Note: Deploy boom as depicted on W.FL-16 Map in approved "Sector Mobile Tier One Booming Strategy for Florida".

2.D8-A.3 - Maintain 500' of exclusion boom in a Chevron configuration across the entrance of Destin Harbor to exclude oil from entering Marina (Lat: 30.393 Long. -86.514). Leave boom open and tend as requested. Note: Deploy boom as depicted on W.FL-16 Map in approved "Sector Mobile Tier One Booming Strategy for Florida".

Location of Work

Operations support and coordination from Pensacola Staging Site

Special Environmental Considerations

All personnel must report marine mammal/turtle sightings to the Wildlife Reporting Hotline: 1-866-557-1401

Manage waste in accordance with area-specific Waste Management Plan.

Be aware that marine mammals have been spotted in the area and that Sea Turtles are nesting April-September. Terns & Nesting Shorebird area. Piping Plover threatened species known to be in area. Avoid damage to seagrass beds. Report spills and sheens 1-866-448-5816.

Reviewed By Signatures - (PSC):

(OSC):

ICS 204 - Assignment List

Incident: Mississippi Canyon 252	Prepared By: o'brian, david	at 5/12/2010 09:45
Period: Period 23 (5/13/2010 06:00 - 5/14/2010 06:00)	Branch: Sector Mobile	
Division/Group/Staging: Okaloosa County Div 2 - Destin Harbor/Morenc		

Special Site-Specific Safety Considerations

PRE-TASK SAFETY

- A JSEA shall be completed prior to beginning work.
- Onsite foreman is responsible for daily accountability of personnel under their direction.
- Onsite foreman should review emergency action plan with personnel for day's activities.
- All incidents shall be immediately reported to your supervisor. These include but are not limited to near misses, first aids, recordable injuries, security breaches, loss of primary containment, etc.
- Everyone has the obligation to stop work that is unsafe.

PROJECT SAFETY

- Insure you have the right tools for the task.
- A spotter should be used whenever working around heavy equipment such as forklifts, backhoes, bulldozers, etc.

PERSONAL SAFETY

- Personnel shall be aware of body and hand positioning.
- Specific HAND hazards should be identified on the JSEA and discussed prior to all tasks.
- Specific hand risk shall be identified on the JSEA
- All appropriate PPE shall be worn when necessary and appropriate (i.e., hard hat when overhead hazards are present; high visibility safety vests, PFD's; hearing protection; sunscreen, long sleeves, hats, etc.).
- PFDs shall be inspected prior to departure and worn if working on water (i.e. boat, dock, etc.).
- All personnel working with chemicals or contaminated materials shall review the applicable MSDS and wear appropriate PPE.

- All personnel shall take appropriate breaks in order to prevent fatigue.
- Each person shall drink plenty of fluids to stay hydrated.
- Shade/Cover from direct sun should be provided within reasonable access to work areas.
- All personnel shall protect themselves from severe weather.
- Personnel shall be aware of potentially stinging or biting insects and reptiles and take the necessary precautions.
- Personnel shall not eat or drink while in contaminated work zones.
- NO SMOKING unless in a designated area. Personnel must be made aware of the location of flammable materials including: fuel and flammable material storage areas, flammable contaminated materials, hay bales, crude oil, etc. Strict adherence to the smoking policy is required.

TRANSPORTATION SAFETY

- It is important to operate/drive carefully while going about your response duties. Drowsiness is a problem that significantly increases a driver's risk of an accident.
- Safe parking may not be available.
- Personnel shall not be using a cell phone while operating/driving and must wear a seat belt.
- For "Pre-Oil Landfall" debris removal activities, see the 208 site safety plan (see attachment to Form 204).

COMMUNICATION

- Review communication procedures prior to each task.
- Ensure communication equipment is in working order.
- Review Hand Signals with all response personnel.
- Review warning sirens and alarms daily.
- Check posting/location of first aid and medical support.
- Identify muster locations daily or as work area advances.
- Do not use cell phone while driving, operating equipment or other tasks requiring full attention (e.g., power tools, cutting, etc).
- Dial 911 for emergency assistance.

Reviewed By Signatures - (PSC):

(OSC):