

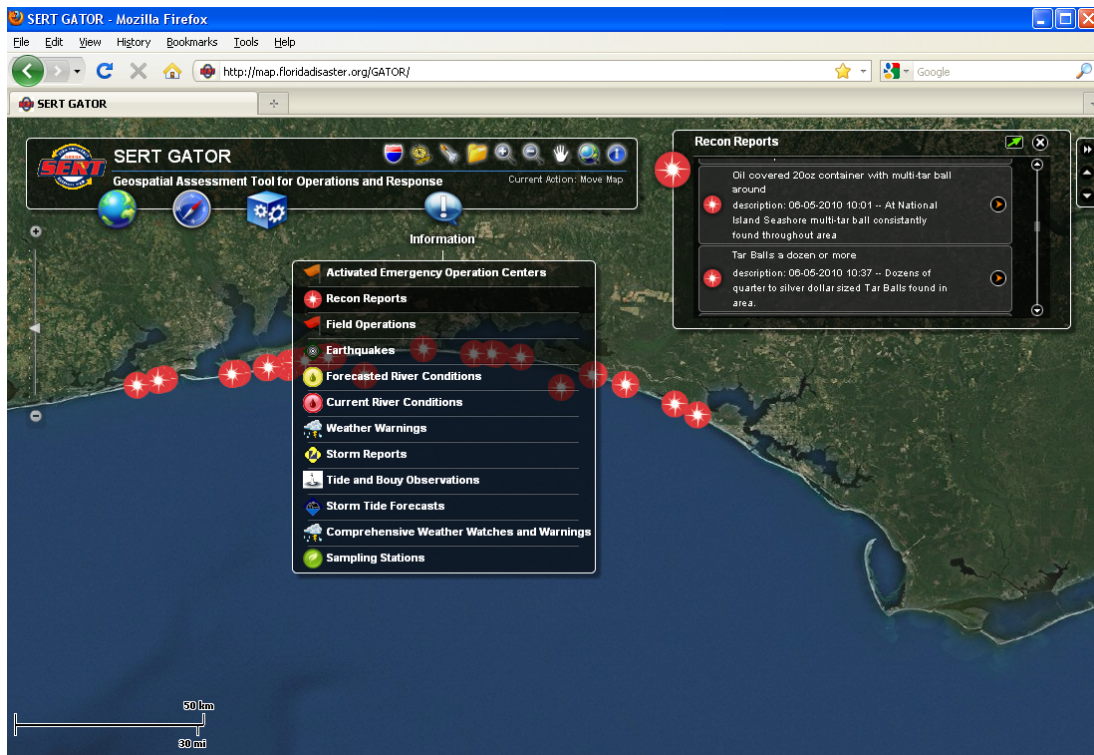


## SERT Recon Reports

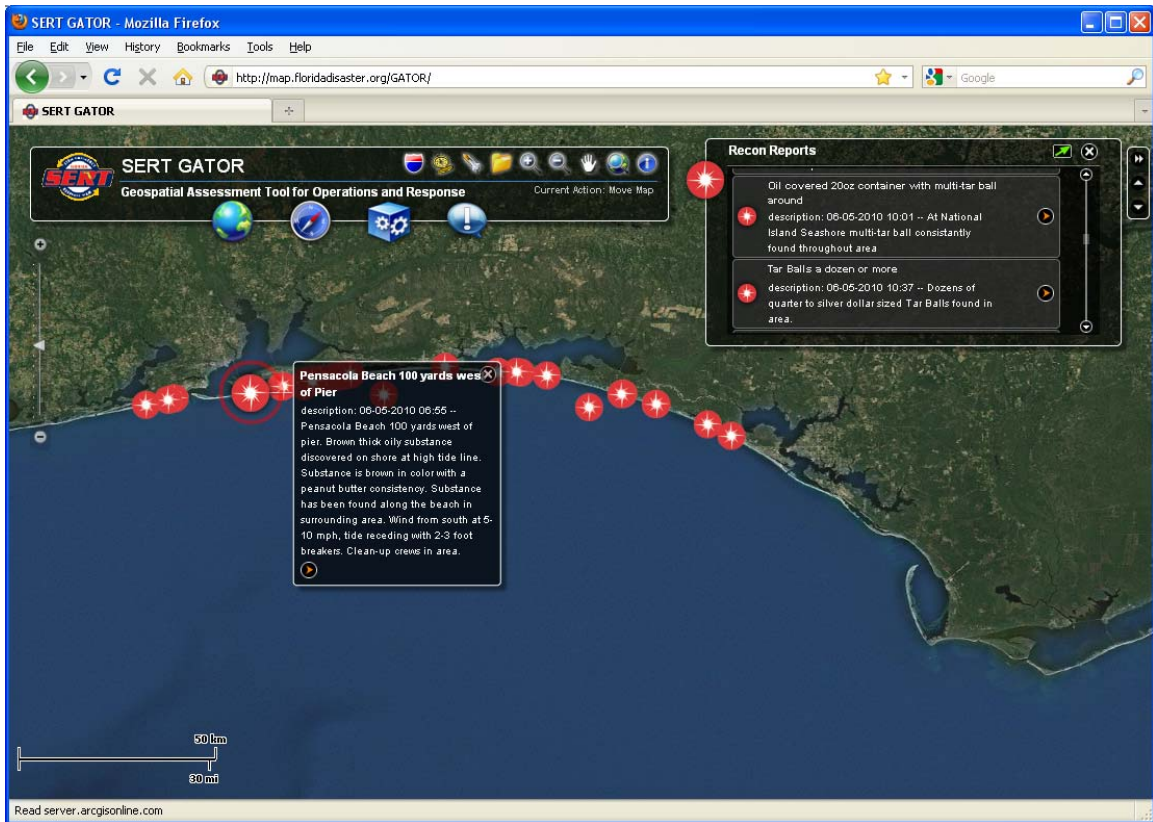
SERT Recon Reports are available in several formats –

- **SERT Recon Reports via GATOR** – The **Geospatial Assessment Tool for Operations and Response**, or **GATOR**, is the primary internet accessible mapping tool for the Florida State Emergency Response Team. **SERT Recon Reports** are available via **GATOR** at <http://map.floridadisaster.org/GATOR>.

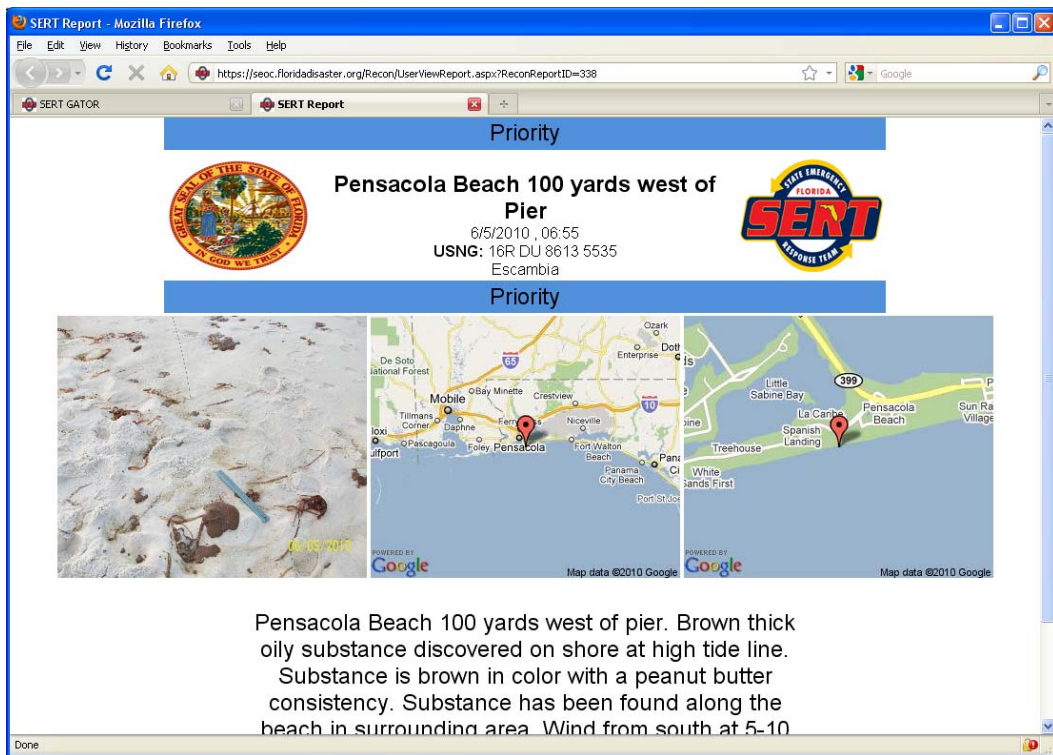
1. Open <http://map.floridadisaster.org/GATOR> in an internet browser.
2. Click  **Information**, pull-down and select  **Recon Reports**.



3. Place cursor over a symbol on the map or select a report in the **Recon Reports** window to view detailed information for the report.

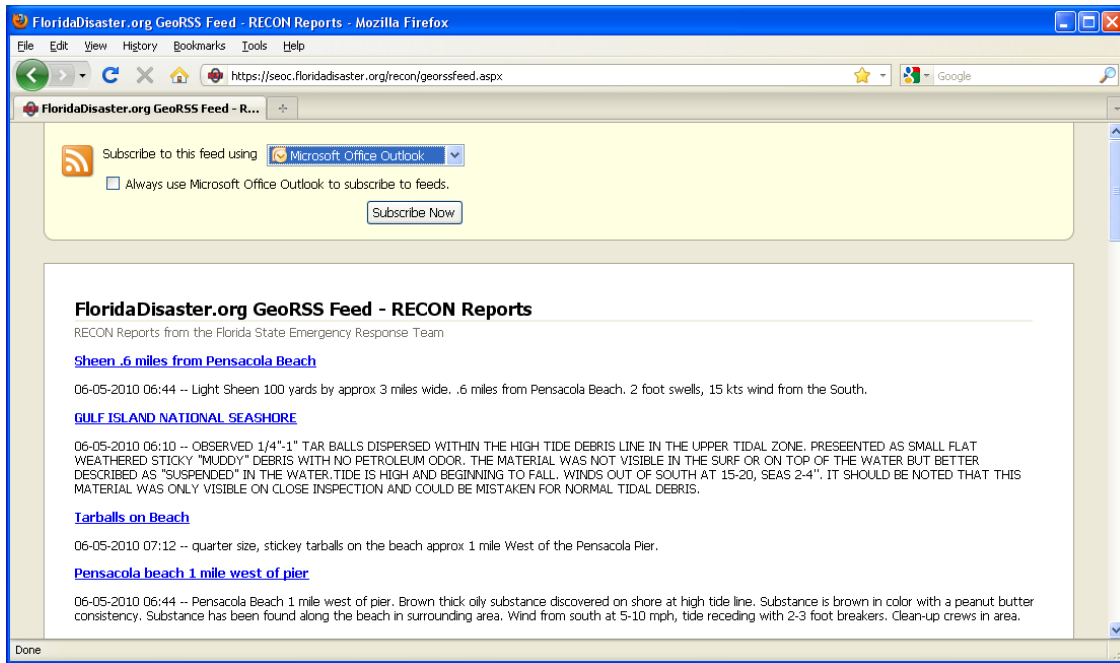


4. Click the orange arrow head to open the full **Recon Report**.



- **SERT Recon Reports via GeoRSS - Really Simple Syndication**, or **RSS**, is a family of web feed formats used to publish frequently updated works—such as blog entries, news headlines, audio, and video—in a standardized format. **GeoRSS** is a particular version of RSS, which includes Latitude and Longitude. The **SERT Recon Reports GeoRSS** may be viewed at --

<https://seoc.floridadisaster.org/recon/georssfeed.aspx>



Note: GeoRSS feeds may be subscribed to using a feed reader like iGoogle, My Yahoo!, Microsoft Office Outlook, or other popular reader.

- **SERT Recon Reports via KML- Keyhole Markup Language**, or **KML**, is a language for expressing geographic annotation and visualization on internet-based, mapping applications. Two free, popular mapping tools to display KML are Google Earth (<http://earth.google.com>) and ESRI's ArcGIS Explorer (<http://www.esri.com/software/arcgis/explorer>). **SERT Recon Reports** may be viewed by adding this file to Google Earth or ArcGIS Explorer --

[http://map.floridadisaster.org/ArcGIS/kml/Recon\\_Reports.kmz](http://map.floridadisaster.org/ArcGIS/kml/Recon_Reports.kmz)

- **SERT Recon Reports via REST Services – Representational State Transfer**, or **REST**, provides a simple, open Web interface to services hosted by ArcGIS Server. These services may be accessed via applications like ESRI's ArcGIS (<http://www.esri.com/software/arcgis>) and the free ArcGIS Explorer (<http://www.esri.com/software/arcgis/explorer>). **SERT Recon Reports** may be

viewed in these applications by visiting the following page and clicking add to ArcMap and/or ArcGIS Explorer—

[http://map.floridadisaster.org/ArcGIS/rest/services/Events/Recon\\_Reports/MapServer](http://map.floridadisaster.org/ArcGIS/rest/services/Events/Recon_Reports/MapServer)

