

2ND ANNUAL FLORIDA'S TRAINING FOR EMERGENCY MANAGEMENT



Leading Through Excellence

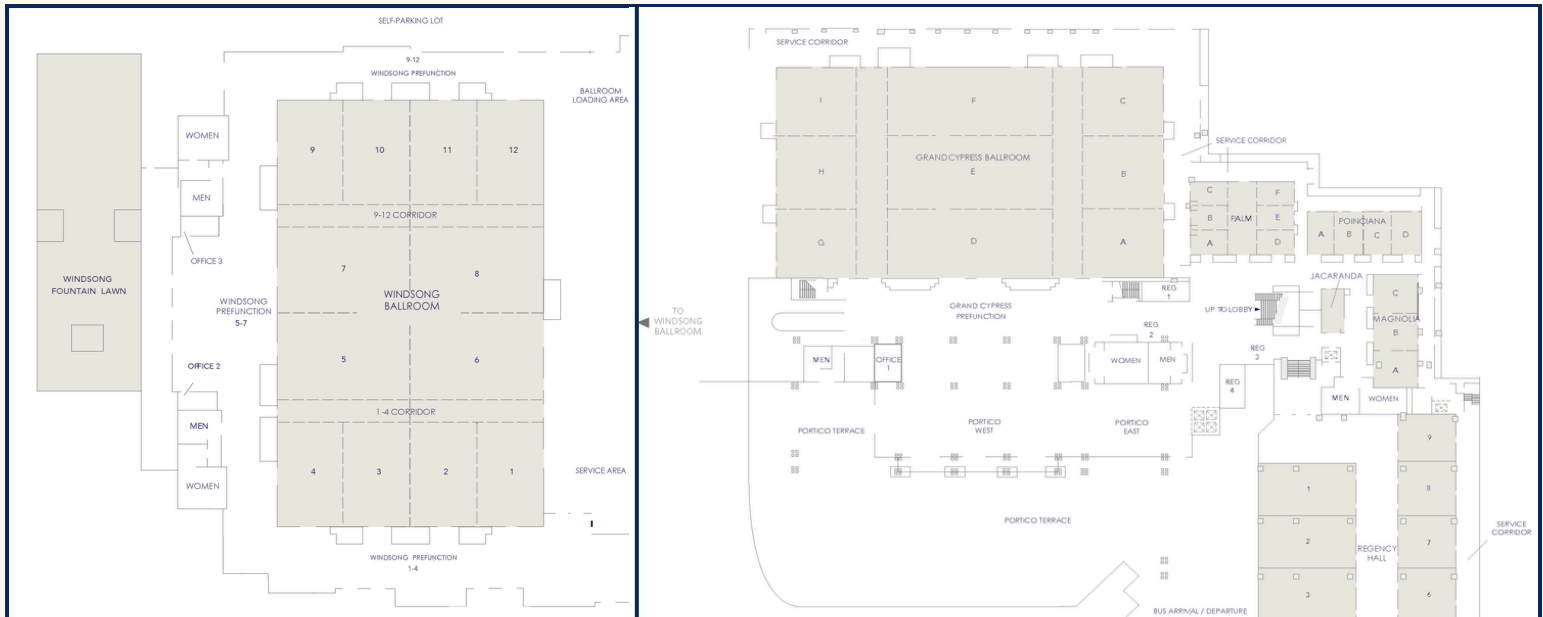
**JUNE 9 – 13, 2025
ORLANDO, FLORIDA**



**FLORIDA
DISASTER** FOUNDATION

Hosted by the
Florida Division of Emergency Management and Florida Disaster Foundation

CONFERENCE AREA MAP



WIFI USERNAME: HYATT-MEETING **PASSWORD: FTEM2025**

Since 1929, MACRO, a LEMOINE Company, has built an unmatched reputation as a leader in the petroleum and petrochemical transportation industries, as well as the most trusted Emergency Fuel and Potable Water provider in the country.

With the nation's largest company-owned fleet of trucks and equipment dedicated to disaster response, Macro has the experience and resources to respond to any emergency – including hurricanes, tornadoes, ice storms, wildfires, earthquakes, floods, oil spills, and power outages.



A LEMOINE COMPANY

AMERICA'S LEADING
PROVIDER OF EMERGENCY
FUEL AND TRANSPORTATION
SERVICES



101 MILLSTONE ROAD | BROUSSARD, LOUISIANA 70518 | PH 337-839-5000 | FX 337-839-5001
TOLL FREE 800-737-3835 | MACROCOMPANIES.COM

WELCOME FROM EXECUTIVE DIRECTOR KEVIN GUTHRIE



It is my great pleasure to welcome you to the Second Annual Florida's Training for Emergency Management (FTEM), proudly hosted by the Florida Division of Emergency Management in partnership with the Florida Disaster Foundation. Following the resounding success of last year's inaugural event, we are excited to build on that momentum by bringing together Florida's emergency management professionals here in Orlando.

FTEM 2025 continues our mission of investing in Florida's emergency management community. This event is designed for practitioners across all levels of government and the private sector who are dedicated to strengthening our state's resilience. With a dynamic lineup of trainings, workshops, keynote sessions, and networking opportunities, FTEM offers something for everyone, whether you are just beginning your career or are a seasoned leader in the field.

This year's theme, "Leading Through Excellence," reflects the high standards we hold ourselves to as emergency managers and public safety professionals. In a discipline where every decision can save lives, excellence is not optional, it is essential. Whether through innovative response strategies, enhanced coordination, or clear communication, your leadership drives Florida's preparedness and recovery. This week, you will gain valuable insights, build new relationships, and leave equipped with practical tools to strengthen your team and your mission.

As we prepare for what is anticipated to be an active 2025 hurricane season, FTEM serves as a vital reminder that our greatest strength is our unity – learning from one another, investing in growth, and raising the bar for emergency management throughout Florida. Together, through a shared commitment to excellence, we are building a safer and more resilient future for our state.

Thank you for your service, your dedication, and your commitment to professional growth. I encourage you to make the most of this opportunity; ask questions, share ideas, and stay engaged not only this week, but in the days and months ahead.

On behalf of the entire team at the Florida Division of Emergency Management, welcome to FTEM 2025.

ABOUT THE EXECUTIVE DIRECTOR

Kevin Guthrie was appointed by Governor Ron DeSantis to serve as Executive Director for the Florida Division of Emergency Management in May 2021. Executive Director Guthrie brings a wealth of knowledge to the role, with more than 30 years of experience in public safety and emergency management in the state of Florida. Before joining FDEM, Executive Director Guthrie spent the first 23 years of his career as a Police Officer and Emergency Preparedness Coordinator with the Jacksonville Sheriff's Office and later served in numerous roles, including EM Director for Flagler County and Assistant County Administrator for Public Safety in Pasco County. Director Guthrie holds a Master of Arts in Human Services from Liberty University, a Bachelor of Arts in Criminal Justice from Columbia College, and is also a certified Master Exercise Practitioner by FEMA.

For updates on FDEM's preparedness, response and recovery efforts, follow Executive Director Kevin Guthrie on X (formerly Twitter) @KevinGuthrieFL.

IRG GLOBAL

EMERGENCY MANAGEMENT



PREVENTION



MITIGATION



PREPAREDNESS



RESPONSE



RECOVERY

When disaster strikes,
IRG Global is ready.

IRGGLOBAL.COM



From hurricanes and wildfires to international crises, our team has stood on the frontlines of disaster response. With decades of experience, we've been dedicated to helping communities recover, rebuild, and thrive in the aftermath of some of the most challenging emergencies in recent history.

LEARN MORE



Be sure to attend one of the many Leadership Talks throughout the week! Topics include leading healthcare response, servant leadership and more.

All Leadership Talks will held be in Windsong Ballroom 7 and 8 during breakfast and lunch.

MONDAY, JUNE 9

7:15 – 7:45 A.M.	Michael S. Davis , <i>MBA, MPH, President, CDR Health</i>
12:15 – 12:45 P.M.	Jonathan Lord , <i>Director, Flagler County Emergency Management</i>

TUESDAY, JUNE 10

7:15 – 7:45 A.M.	Tyler Duhon , <i>Response Operations Manager, Lemoine</i>
12:15 – 12:45 P.M.	Gracia Szczech , <i>Senior Advisor, McChrystal Group & Erin Sutton</i> , <i>Partner, McChrystal Group</i>

WEDNESDAY, JUNE 11

7:15 – 7:45 A.M.	Chad Poppell , <i>Principal, KPMG</i>
12:15 – 12:45 P.M.	Chris Stallings , <i>SBA Administrator and former Georgia State Director</i>

THURSDAY, JUNE 12

GENERAL SESSION Windsong Ballroom 8 – 10 A.M.	KEYNOTE SPEAKER Bryan Hastings
12:15 – 12:45 P.M.	Bryan Koon , <i>President & CEO, IEM</i>

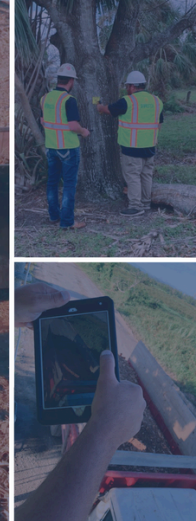
FRIDAY, JUNE 13

7:15 – 7:45 A.M.	Kevin Guthrie , <i>Executive Director, FDEM</i>
------------------	--

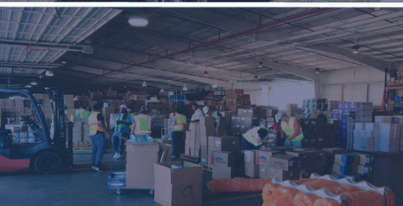


DEBRISTECH

REAL-TIME DATA.
REAL-TIME RECOVERY.



- 📍 **DISASTER DEBRIS MONITORING**
- 📍 **AUTOMATED DEBRIS MANAGEMENT SYSTEM**
- 📍 **PUBLIC ASSISTANCE CONSULTING**
- 📍 **HAZARDOUS SITE ASSESSMENTS**
- 📍 **360° IMAGE AND LiDAR DOCUMENTATION**
- 📍 **AERIAL IMAGERY AND MAPPING**
- 📍 **EMERGENCY OPERATIONS SUPPLY TRACKING**



www.DebrisTech.com

SERT LOGISTICS & RESOURCE SHOWCASE

THURSDAY, JUNE 12 | 10:00 A.M. – 5:00 P.M. | PORTICO EAST & WEST, PORTICO TERRACE

Learn more about the requestable logistics equipment and support personnel that can be requested before, during and after disasters.

FEATURED RESOURCES



Restroom Trailer



Laundry Trailer



EOC Support Staff



Bunk House



Flood Control Solutions

FEATURED PARTNERS

ACDC | APTIM | AshBritt | Atlys | CDR EM | CrowderGulf | CRS | DebrisTech | Doodie Calls | Echo1 Logistics | Ernst & Young | ESF 16: Law Enforcement | ESF 4/9: Firefighting and Search & Rescue | FDEM IA Preliminary Damage Assessment Team | FDEM Liaison | FDEM Mitigation Support Team | FDEM PA Preliminary Damage Assessment Team | Figgers | Florida National Guard | Florida State Guard | GardaWorld Federal | Garner | Grainger | Indelible | IRG Global | KPMG | Lemoine | LifeScience Logistics | Regional & SERT All-Hazards Incident Management Team | SLSCO | Tidal Basin | U.S. Flood Control – Tiger Dam

SCAVENGER HUNT

- Have fun and educate yourself on the unique resources that can be requested during an activation of the State Emergency Operations Center (SEOC).
- As you explore the Logistics Showcase, complete the various quests on the Scavenger Hunt Bingo Card.
- Once you have completed the quest and taken a photo, place a sticker over the square.
- You must complete the entire card to be entered into the raffle, including filling out the "CONTACT" section with your name, agency, and email address, and submitting your photos via email to response.training@em.myflorida.com.
- A bonus raffle entry will be entered if you upload your photos to LinkedIn using #FTEM2025 and sharing why you attended FTEM!

**PICK UP YOUR BINGO CARD AT
THE REGISTRATION BOOTH**

HUMAN SERVICES SUMMIT AGENDA

MONDAY, JUNE 9 | WINDSONG BALLROOM 5 AND 6

7:00 – 8:00 A.M.	Breakfast in Windsong Ballroom 7 and 8 sponsored by CDR EM, featuring Leadership Talk from Michael S. Davis, MBA, MPH, President, CDR Health
8:00 – 8:10 A.M.	Welcome and Opening Remarks
8:10 – 8:30 A.M.	2024 Response and Recovery Deployment of Human Services Support Teams
8:30 – 9:30 A.M.	The State of Florida: 2024 Mass Care Innovations
9:30 – 10:00 A.M.	Volunteers and Donations: A Full Cycle Approach
10:00 – 10:15 A.M.	Coffee Break sponsored by the Florida Disaster Foundation
10:15 – 10:45 A.M.	ESF 17 and the Florida State Agricultural Response Team (SART): Concept of Operations, Building Capacity, and Response
10:45 – 11:00 A.M.	Veterans' Affairs in Disaster Response
11:00 – 11:45 A.M.	The Power of Partnerships
11:45 A.M. – 12:00 P.M.	VolunteerFlorida and VOADs: "What is the Difference"
12:00 – 1:00 P.M.	Lunch in Windsong Ballroom 7 and 8 sponsored by ABML, featuring Leadership Talk from Jonathan Lord, Director, Flagler County Emergency Management
1:00 – 1:30 P.M.	ESF 18 Supporting Business, Industry and Economic Stabilization and Florida Commerce - Community Service Programs
1:30 – 2:30 P.M.	Roles and Responsibilities of Health and Medical (DOH) During Response and Recovery
2:30 – 3:00 P.M.	Afternoon Snack Break sponsored by the Florida Disaster Foundation
3:00 – 4:00 P.M.	Legal Services: A Necessary Disaster Resource
4:00 – 5:00 P.M.	Bringing Lifelines to Floridians: Utilizing the CMIST Framework to Organize Human Services Efforts (Pre-Impact)

HUMAN SERVICES SUMMIT AGENDA

TUESDAY, JUNE 10 | WINDSONG BALLROOM 5 AND 6

7:00 – 8:00 A.M.	Breakfast in Windsong Ballroom 7 and 8 sponsored by Lemoine, featuring Leadership Talk from Tyler Duhon , <i>Response Operations Manager, Lemoine</i>
8:00 – 8:05 A.M.	Welcome
8:05 – 9:05 A.M.	Building the Bridge from Human Services (Response) to Individual Assistance (Recovery)
9:05 – 10:00 A.M.	Developing local partnerships with Houses of Worship- United Way of Lee, Hendry, and Glades
10:00 – 10:15 A.M.	Coffee Break sponsored by KPMG
10:15 – 11:15 A.M.	Disasters and Insurance: A Necessary Collaboration
11:15 A.M. – 12:00 P.M.	Local Perspective on Case Management: Households Impacted by Disasters Before DCMF Implementation
12:00 – 1:00 P.M.	Lunch in Windsong Ballroom 7 and 8 sponsored by LifeScience Logistics, featuring Leadership Talk from Gracia Szczech, Senior Advisor, McChrystal Group and Erin Sutton, Partner, McChrystal Group
1:00 – 2:00 P.M.	SBP: Our Role Before, During and After a Disaster
2:00 – 2:45 P.M.	Sarasota Long Term Recovery Group - United Way of Sarasota and "Do you know Alice?" : Florida's Alice Report
2:30 – 3:00 P.M.	Afternoon Snack Break sponsored by the Florida Disaster Foundation
3:00 – 4:00 P.M.	Community Emergency Response Team Responding Locally
4:00 – 5:00 P.M.	Bringing Lifelines to Floridians: Utilizing the CMIST Framework to Organize Human Services Efforts (Session 2 - Florida Model)

INNOVATIVE SOLUTIONS FOR THE FULL SPECTRUM OF DISASTER PLANNING, RESPONSE, AND RECOVERY SERVICES.



- ✓ EXPERTISE IN DISASTER RELIEF, RESPONSE, AND RECOVERY OPERATIONS, DEBRIS MANAGEMENT, EOC STAFF AUGMENTATION AND SUPPORT, LOGISTICS, BASE CAMPS, LOGISTICAL STAGING AREAS, AND SHELTERS.
- ✓ EXTENSIVE EXPERIENCE AND EXPERTISE IN PUBLIC ASSISTANCE, INDIVIDUAL ASSISTANCE, GRANT MANAGEMENT, COMPREHENSIVE DEBRIS MONITORING SERVICES, AND CALL CENTER SUPPORT.
- ✓ ABILITY TO RAPIDLY DEPLOY AND SUPPORT RESPONSE AND RECOVERY OPERATIONS WITH PERSONNEL, EQUIPMENT, AND SUPPLIES.



SCAN QR CODE TO LEARN MORE ABOUT CDR | EM
WWW.CDR-EM.COM

F-ROC FORMS

Time: 10:15 A.M. – 12:00 P.M.

Location: Virtual

Description: Incomplete or inaccurate information. Cost documentation. Documentation of damage. Military time and GPS coordinates. What are some of the reasons your organization has received an RFI? Was it because of your documentation? Join the Florida Division of Emergency Management as we explore the forms available through the Florida Recovery Obligation Calculation (F-ROC) program! In this interactive course, you will learn how to use and complete F-ROC forms. You will gain an in-depth understanding of the purpose and importance of different types of forms, including a variety of activity forms, and more. You will also learn how to identify and capture important information that best serves your organization as you complete your FEMA Project Worksheet (PW).

Instructors:

Melissa Foggy, Deputy Bureau Chief of Recovery, FDEM

Ismael Colon, F-ROC Project Manager and Admin & Management Cost Team Lead, FDEM

Kenny Wong, Learning Professional and Consultant, KPMG

ATTORNEY PATHWAY: CHAPTER 252, PUBLIC RECORDS, ETHICS DURING AND AFTER PUBLIC SERVICES: CONFLICTING EMPLOYMENT OR CONTRACTUAL RELATIONSHIPS AND REVOLVING DOOR RESTRICTIONS

Time: 3:00 – 5:00 P.M.

Location: Virtual

Description: This virtual course will offer CLE credits and a unique learning experience for legal professionals and attorneys. Broaden your knowledge and build your confidence navigating this emergent legal landscape!

Instructors:

Kelly Ann Kennedy, Deputy General Counsel, FDEM

Caleb Keller, Senior Attorney, FDEM

Katharine Heyward, Managing Senior Attorney, FDEM



SDR

**CONFIDENCE
IN CHAOS.**

SDR LEVERAGES ITS TEAM'S EXPERTISE IN PUBLIC WORKS, EMERGENCY MANAGEMENT, & PUBLIC SAFETY TO DELIVER PROJECTS WITH SEAMLESS COMMUNICATION, HANDS-ON LEADERSHIP, & A COMMITMENT TO SAFETY & QUALITY.



(864) 469-9776

WWW.GOSDR.COM

- DISASTER DEBRIS REMOVAL
- ROW UTILITY SERVICES
- MARINE DIVISION
- CIVIL CONSTRUCTION SERVICES

FLORIDA STRONG THROUGH PARTNERSHIPS CONTINUED: RESOURCE MANAGEMENT AND MUTUAL AID DEMES TRAINING

Time: 8:00 A.M. – 5:00 P.M.

Location: Windsong 10

Description: In 2024, the Florida Division of Emergency Management officially launched the Resource Management (RM) Portal. This rollout was part of FDEM's commitment to enhance operational efficiency and resource tracking during emergency incidents. The first half of the workshop will focus on the enhancements to the RM Portal and its integration into the Mutual Aid Portal. The second half of the workshop focuses on the new enhancements to the Mutual Aid Portal and how everything works together to build strong partnerships.

Instructors:

Ian-Paul Gadea Guidicelli, *SERT Chief and Bureau Chief of Response, FDEM*

Kaylynn Perry, *Planning Section Chief, FDEM*

Jay Helton, *State CEMP Planner and Resource Unit Lead, FDEM*

Annette Nelson, *Response Salesforce System Administrator, FDEM*

Chasity Brown, *Statewide Mutual Aid & EMAC Coordinator, FDEM*

FEMA L0105 PUBLIC INFORMATION OFFICER (PIO) BASICS

Time: Monday – Wednesday, 8:00 A.M. – 5:00 P.M.

Location: Windsong 3

Description: To equip participants with the skills needed to be full or part-time PIOs, including oral and written communications; understanding and working with the media; and basic tools and techniques to perform effectively as a PIO, both in the proactive/ advocacy times and crisis/emergency response.

Instructors:

Mike Jachles, *Chair, Florida Association of PIOs*

Ashley Turner, *Public Safety PIO, Charlotte County*

FLORIDA POD TRAINING

Time: 8:00 A.M. – 5:00 P.M.

Location: Windsong 4

Description: The goal of this training is to provide foundational guidance for County Emergency Managers who will conduct POD operations during an activation, to include standard operating procedures and best management practices.

Instructors:

Christina Goetzman, *Logistics Section Chief and Deputy Bureau Chief of Response, FDEM*

Porschica Griffith, *Response Curriculum Developer & Trainer, FDEM*

Frankie Lumm, *Incident Commander, FDEM*

Monday Break Schedule

7:00 – 8:00 A.M. | Windsong 7 & 8

Breakfast sponsored by



10:00 – 10:15 A.M. |

Windsong Prefunction Area

Morning Coffee Break

sponsored by



12:00 – 1:00 P.M. | Windsong 7 & 8

Lunch sponsored by



2:30 – 3:00 P.M. |

Windsong Prefunction Area

Snack Break

sponsored by



5:30 – 7:30 P.M. |

Windsong Prefunction Area &

Fountain Lawn

Evening Reception

sponsored by



Emergency Stockpile Solutions

LifeScience
Logistics

LifeScience Logistics (LSL) is a logistics leader in the life science industry, providing third-party management of federal and state government emergency stockpiles to prepare for all manner of disasters. LSL manages pharmaceuticals, medical devices, vaccines, biologics, and PPE for over 60 clients, exclusively within healthcare.



Emergency Preparedness

Our team of experts has years of experience handling public health emergencies and secure storage of lifesaving pharmaceuticals and medical devices.

Cold Chain Optimized

We offer storage options in a wide range of temperatures.

20°C to 25°C
*controlled room
temperature*

2°C to 8°C
Cooler

-30°C
Freezer

-80°C
ultra-low frozen

Delivering the next generation of
supply chain solutions.

Contact Jeff Johnson

📞 703.994.7294

✉ JJohnson@lslog.com

🌐 www.lslog.com

LEMOINE®

DISASTER SERVICES

LEMOINE is a global provider of comprehensive Disaster Services equipped to prepare, respond, recover, and mitigate the impact of natural or man-made disasters and emergency events.



RESPONSE - RECOVERY - RESILIENCY

GRANT + PROGRAM + CONSTRUCTION MANAGEMENT

RESTORATION + REMEDIATION

DEBRIS MANAGEMENT + MONITORING

INSPECTION + CLAIMS

STRATEGIC SURGE STAFFING

EMERGENCY WATER + FUEL + POWER + TEMPORARY FACILITIES



Visit our website to learn more.
1LEMOINE.COM

LEADERSHIP DEVELOPMENT: DEVELOP A MINDFUL LEADERSHIP PRESENCE & THE ROLE OF EMOTIONAL INTELLIGENCE IN LEADERSHIP**Time:** 8:00 – 10:00 A.M.**Location:** Windsong 12

Description: Mindfulness is an offshoot of self-awareness, a component of emotional intelligence. In this session, you'll learn how to focus on the present moment, learn from all that happens and make the most of it in your leadership.

- Explain how self-awareness supports mindful leadership.
- List the traits of mindful leaders.
- Describe how mindfulness enhances leadership presence.

Emotional intelligence (EI) and the ability to regulate emotions facilitate intentional actions and positive relationships. This session will help leaders use their strengths, increase their self-awareness and develop mindfulness. Explain how self-awareness supports mindful leadership.

Instructors:**Francis Miranda**, *Leadership Speaker and Trainer***TRANSFORMING THE FUTURE OF EMERGENCY RESPONSE: LEVERAGING TECHNOLOGY, DATA, & AI TO EMPOWER LEADERS****Time:** 8:00 – 10:00 A.M.**Location:** Windsong 11

Description: Discover how the Florida Division of Emergency Management partnered with Slalom to modernize business operations, enhance efficiency, and accelerate efforts to protect the lives and livelihoods impacted by disasters. Learn why leveraging technology is vital to reviving Florida's economy.

Instructors:**Kevin Guthrie**, *Executive Director, FDEM***Keith Pruett**, *Deputy Executive Director, FDEM***Monica Corbin**, *Strategic Advisor, Slalom***Armand Tesserot**, *Data Strategist, Slalom***LEADERSHIP DEVELOPMENT: IMPROVE RESULTS WITH MINDFUL EMOTIONALLY INTELLIGENT COMMUNICATION****Time:** 10:15 A.M. – 12:00 P.M.**Location:** Windsong 12

Description: This session teaches leaders how to combine mindfulness with emotionally intelligent communication to establish a strong, questioning culture, manage conflict with empathy and implement change without resentment.

- Explain what a questioning culture is and how it benefits an organization.
- Discuss how to address conflict with mindfulness and emotional mentoring.
- Describe how an empathetic, mindful approach positively impacts organizational change.

Instructor:**Francis Miranda**, *Leadership Speaker and Trainer***CYBERSECURITY LEADERSHIP AND STRATEGY PROFESSIONAL EDUCATION PROGRAM****Time:** Monday – Wednesday, 8:00 A.M. – 12:00 P.M.**Location:** GHI

Description: The Cybersecurity Leadership and Strategy Professional Education Program is designed to arm elected officials, municipal and state leaders with essential skills in cybersecurity policy, strategy, and response. The program focuses on the requirements of the 2022 Local Government Cybersecurity Act, Florida Statute Section 282.3185.

Instructor:**Alexander Crowther**, *Florida International University, Jack D. Gordon Institute*

COURSE DEVELOPMENT ESSENTIALS 101

Time: 8:00 – 10:00 A.M.

Location: Windsong 2

Description: You have knowledge and experience that could benefit your coworkers – but how do you turn that into effective training? Many professionals are asked to develop courses or sessions without any formal background in instructional design. This introductory workshop helps bridge that gap, offering a foundation to help you communicate your expertise in a clear, structured way.

In this interactive session, you'll learn how to:

- Translate your subject matter expertise into clear and actionable learning objectives;
- Understand your role in the development process; and
- Prepare for your first development meeting with confidence.

Instructor:

Mitchell Carbajal,

Mitigation Training Coordinator, FDEM

STATE PROCUREMENT AND CONTRACTS PATH

Time: 8:00 A.M. – 12:00 P.M.

Location: Windsong 9

Description: During this session, attendees will hear from the subject matter experts on disaster procurement and contracts for the State of Florida. Attendees should expect to gain a broad understanding of statutory and rules requirements, as well as helpful tips and tricks to most effectively utilize taxpayer dollars.

Instructors:

Jordan Irving, *Deputy Director of Contracts, Procurement Office, FDEM*

Tiffany Gary, *Logistics Contract & Vendor Manager, FDEM*

Ashley Massey, *Emergency Coordination Officer, Florida Department of Management Services*

Kimberly Alvarez-Estrada, *Purchasing Analyst Supervisor, Florida Department of Management Services*

STATEWIDE INSTRUCTOR'S WORKSHOP AND TRAINING SYMPOSIUM

Time: 10:15 A.M. – 5:00 P.M.

Location: Windsong 2

Description: The Statewide Instructor's Workshop and Training Symposium offers Florida Credentialed instructors, as well as those seeking credentialing, a vital opportunity to engage in meaningful discussions about current policies, credentialing processes, training maintenance, best practices, and upcoming advancements in the field of emergency management. This workshop is designed to promote collaboration, enhance instructional effectiveness, and ensure that instructors are well-informed about critical developments in emergency management training.

Instructors:

Amy Godsey, *Deputy Bureau Chief of Response, FDEM*

Melissa Rudd, *State Training & Exercise Officer, FDEM*

Ursula Walker, *Regional Training & Exercise Manager, FDEM*

Lyle Briggs, *Regional Training & Exercise Manager, FDEM*

Rick Knowles, *Regional Training & Exercise Manager, FDEM*

ENHANCING COMMUNITY RESILIENCE: EMERGENCY MANAGERS AND FLOODPLAIN ADMINISTRATORS – A PARTNERSHIP

Time: 10:15 A.M. – 12:00 P.M.

Location: Windsong 11

Description: The presentation will introduce "Floodplain Management 101," covering essential terms and concepts such as high velocity zones (VE), floodways, base flood elevations, and freeboard. Understanding these terms is fundamental for both Emergency Managers and community stakeholders to effectively communicate and implement flood risk management strategies.

Instructors:

Jamelyn Trucks, *National Lead, Atkins Realis*

Del Schwalls, *Board of Directors, Florida Floodplain Managers Association*

Jerry Murphy, *SSPA- Flood Resilient Communities*

DISASTER RELIEF SOLUTIONS

Local, experienced experts providing turnkey services for portable sanitation, base camps, and LSA's.



www.doodie-calls.com



TURNKEY WRAPAROUND SERVICES

We provide all necessary wraparound services to provide top-of-the-line turnkey products for our clients. Daily pump-out, potable water refill, and fuel resupply for all trailers, portable toilets, and generators.

EXPERIENCE

Doodie Calls has assembled a team with over 50 years of collective experience in emergency management and response, logistics, compliance, and disaster preparedness both in the public and private sectors. We supported disaster relief efforts for Hurricanes Idalia (2023), Nicole (2022), Ian (2022), Ida (2021), Laura (2020), and Sally (2020) as well as tornado and flooding events in Kentucky and Mississippi. Additionally, we were awarded the Blue 1st Incident Support Team Patch from FEMA Urban Search and Rescue Team for our support services in the wake of the Surfside Condominium Collapse (2021).

REPORTING CAPABILITIES

We use cutting edge technology to stay connected after the storm. Doodie Calls has licensed proprietary software to manage our assets, personnel, and collect real-time data to assist in decision making. In addition to the tracking and management capabilities, our software provides a wide variety of reporting capabilities that are unique and customizable to each of our clients. These reports have the capability to range from purchase history to purchase orders, site installs and maintenance schedules.

CONTACT | JEFF SIMMONS, VICE PRESIDENT
352-551-7941 jeff@doodie-calls.com



FLORIDA COMPANY

Headquartered in St. Pete, FL with 6 additional locations supporting the state of Florida.



RAPID MOBILIZATION

Local presence means we are onsite quickly following the storm.



TURNKEY BASE CAMPS

Providing the same great service, no matter the size of your camp.



SELF PERFORM

Onsite with our own team so you can trust us to provide consistent, quality service.

EQUIPMENT CAPABILITIES

Restroom Trailers (2-4-8-10-11 Stalls)
Shower Trailers (8 Head)
Laundry Trailers (8 Wash/8 Dry)
Bunkhouse Trailers (10 Individual Bed)
ADA & 3 Stall Combo Trailers
Generators w/Cables & Accessories
Fuel Trailers
Standard & ADA Portable Toilets
Handwash Stations

FLORIDA'S TRAINING FOR EMERGENCY MANAGEMENT STUDENT INVESTMENT PROGRAM

Time: 1:00 – 2:30 P.M.

Location: Windsong 9

Description: Join us to learn about Florida's Training for Emergency Management Student Investment Program, a transformative initiative focused on investing in the future of undergraduate students. Learn more about the key challenges students face, including financial difficulties, academic hurdles, and post-graduation struggles. Don't miss the chance to discover how this program will invest in the next generation of Emergency Management professionals!

Panelists:

Kevin Guthrie, *Executive Director, FDEM*

Claire Knox, *Program Director, UCF Master of Emergency and Crisis Management*

Moderator:

Avery Michaud, *FTEM Planner, FDEM*

LEADERSHIP DEVELOPMENT: CREATING A POWERFUL PERSONAL BRAND

Time: 1:00 – 2:30 P.M.

Location: Windsong 12

Description: Consider who stands out because of a positive brand reputation. Learn the essentials of how to build a powerful personal brand and why it is important.

- Explore the concepts of personal brand and personal image.
- Discuss the importance of personal brand to professional growth and success.
- Consider the elements of personal brand and how to redefine a current personal brand.

Instructors:

Francis Miranda, *Leadership Speaker and Trainer*

TRANSFERRING AND APPLYING THE KNOWLEDGE FROM AARS USING DATA STORYTELLING

Time: 1:00 – 5:00 P.M.

Location: Windsong 11

Description: Observing, analyzing, and reporting are key components of the exercise evaluation process of the Homeland Security Exercise and Evaluation Program. Exercise programs, especially if spanning multiple years, can generate enormous amounts of data that might make it difficult to find and recognize consistent trends which can be used to inform the Integrated Preparedness Cycle. Analytical tools can greatly improve an exercise program through data storytelling. Data storytelling is a process by which data insights can be made available to a wider audience through data narration. IEM recently demonstrated the power of data storytelling using over twenty years of consistent exercise outcomes, observations, findings, and categorized AAR comments from a client's program to create a powerful and effective dashboard narrations in Microsoft Power BI. This presentation will demonstrate this innovative method to create shared understanding of exercise data that can lead to improved future training and outcomes.

Instructors:

Jim Weldin, *Manager, Planning and Preparedness, IEM*

Patrick Nolan, *Senior Planner, IEM*



SETTING THE STANDARD FOR **DISASTER SOLUTIONS**



Logistics &
Operations



Housing Repair &
Emergency Shelter



Mass Population
Care



Turnkey Base
Camps



Healthcare

SLSCO has a complete management, operations and logistics team ready at a moment's notice in multiple locations throughout the United States. With expedited response times to any area of the country, our team and services are fully scalable to respond to assignments of any size, nature and location.



RECOVERY WITH A STORM IN THE OVEN: HOW TO COORDINATE RECOVERY EFFORTS WITH MULTIPLE STORM LANDFALLS

Time: 3:00 – 5:00 P.M.

Location: Windsong 11

Description: This course will be a case study of the recovery efforts undertaken for the period following Hurricane Helene and prior to Hurricane Milton. We will discuss the operational and logistical hurdles faced and lessons learned when deploying mobile assets for recovery operations while facing the potential for a second hurricane landfall in the coming days. The course will cover logistical protocols, communication and a plan of action for future storms.

Instructors:

Daniel Coleman, *Director Of Operations, FORTS Services*

Louis Raniszewski, *Readiness & Resources Program Lead and Logistics Chief, Pinellas County Emergency Management*

Scott Silverman, *National Strategic Customer Manager, Sunbelt Rentals*

Walter Hoehn, *Critical Service & Emergency Director, Sunbelt Rentals, Inc.*

Clay Pacheco, *Director of the Office of Emergency Management, Broward County*

Frank Babinec, *Owner, Elite Coaching & Consulting*

Elizabeth Caison, *Region 5 Recovery Coordinator, FDEM*

E.J. Landrith, *Operations Manager, Sarasota County Emergency Management*

LEADERSHIP DEVELOPMENT: HOW TO CRAFT YOUR OWN PERSONAL BRAND STATEMENT

Time: 3:00 – 4:00 P.M.

Location: Windsong 12

Description: Identify next steps to create and write a personal branding statement that uniquely represents your value.

- Discuss the personal branding framework and the steps to writing a personal branding statement.
- Assess the areas of opportunity, barriers and factors to building a strong personal brand.

Instructor:

Francis Miranda, *Leadership Speaker and Trainer*

DUPLICATION OF BENEFITS FOR DISASTER SURVIVORS

Time: 3:00 – 5:00 P.M.

Location: Windsong 9

Description: Duplication of Benefits (DOB) presents a unique challenge for disaster relief. On the one hand there is the motivation to assist disaster-stricken communities as quickly as possible, and on the other the responsibility to be judicious in the use and distribution of government resources. Panelists will discuss lessons learned from disaster recovery programs in states like Florida, Louisiana and New York and how duplication of benefits rules can disproportionately impact low- and moderate-income (LMI) disaster survivors. Panelists will also discuss DOB trends and recent HUD and FEMA changes designed to streamline requirements, including updates in the HUD Universal Notice designed to help alleviate DOB for LMI applicants.

Instructors:

Laura Katz, *Senior Manager, Eisner Advisory Group LLC*

Doug Roberts, *Recovery Deputy Director, AC Disaster Consulting*

Jennifer Butler, *Partner, EisnerAmper*

Thomas Hartman, *Bureau Chief, FloridaCommerce*

LEADERSHIP DEVELOPMENT: COLLABORATION IN TODAY'S WORKPLACE

Time: 4:00 – 5:00 P.M.

Location: Windsong 12

Description: The term collaboration has had a lot of attention. Recognize how to use collaboration effectively and with authenticity in an effective manner.

- Define collaboration in today's workplace.
- Discuss how to take an active collaborative role to effectively work and communicate with others.
- Identify strategies to help eliminate common communication problems when collaborating with others.

Instructor:

Francis Miranda, *Leadership Speaker and Trainer*



GARDAWORLD
FEDERAL

YOUR TRUSTED PARTNER IN THE EYE OF THE STORM

Real people. Real challenges. Real support.

Storms test more than infrastructure—they test people's strength. GardaWorld Federal stands with those facing their hardest days, providing support that's not just strategic, but personal. From medics, logistics staff and security, every member of our team shows up ready to serve.

**HELP STARTS
WITH HUMAN
CONNECTION**

garda-federal.com



ANTICIPATING NEEDS, DELIVERING SOLUTIONS: STATE PROCUREMENT

Time: 10:15 A.M. – 12:00 P.M.

Location: Virtual

Description: When disaster strikes, are you aware of what resources that are available locally within your area? What about, what resources that your state partners can provide? During this session, you will hear from subject matter experts from the Department of Management Services (DMS) and the Florida Division of Emergency Management (FDEM) regarding available resources they can provide during activations. This will include an in-depth look into emergency contracts and resources that can be requested from both DMS and FDEM.

Instructors:

Jordan Irving, Deputy Director of Contracts, FDEM

Tiffany Gary, Logistics Contract & Vendor Manager, FDEM

Ashley Massey, Emergency Coordination Officer & ESF-7 Lead, Florida Department of Management Services (DMS)

Kimberly Alvarez-Estrada, Purchasing Analyst Supervisor, DMS

DISASTER REFORM ACT SECTION 1206: PUBLIC ASSISTANCE

Time: 3:00 – 5:00 P.M.

Location: Virtual

Description: Under the Disaster Recovery Reform Act Section 1206, eligible costs to help local governments scale up to meet the demand from the public for permitting, code enforcement, and public information while homeowners and businesses make repairs. Increased costs related to FEMA National Flood Insurance Program requirements for substantial damage assessments and determinations are also eligible. Designed for emergency managers, this training will provide an overview of Section 1206 of the Disaster Recovery Reform Act (DRRA) and what the potential increased demand on local government services could look like after a hurricane, as well as best practices and lessons learned from previous disasters. The training will focus on key roles and responsibilities, how to scale up to meet federal requirements and public demand, and how to set your jurisdiction up to be reimbursed for these costs after a disaster.

Instructors:

Ryan Lamb, Emergency Management & Resilience Director, City of Cape Coral

Tanya Shannon, Deputy Director of Recovery, Hagerty Consulting



providing state-of-the-art disaster response, equipment & resources

GRANNY'S ALLIANCE

TURNKEY MOBILE EQUIPMENT SOLUTIONS

SLEEP UNITS | SHOWERS | RESTROOMS | LAUNDRY
COMMAND TRAILERS | GENERATORS | HVAC | SECURITY
HAND WASH STATIONS | FOOD SERVICE | FUEL SERVICES
WATER SERVICES | EMERGENCY RESPONSE SUPPLIES

877-472-6999
GRANNYSALLIANCE.COM

When Disaster Strikes, AshBritt Delivers

Nationwide Rapid-Response Solutions for Communities in Crisis.

There when you need us.

Your Turnkey Government Solutions Provider.

With over 500 missions and 30 years of experience, AshBritt is the trusted name in rapid-response emergency management. From hurricanes to wildfires, we provide comprehensive recovery solutions tailored to the unique needs of each community. Our team mobilizes quickly, works efficiently, and brings unmatched expertise to every mission.

■ Storm & Hurricane Response

Rapid mobilization, debris removal, temporary infrastructure, and base camp logistics for first responders.

■ Emergency Management & Logistics

End-to-end coordination before, during, and after crises.

■ Infrastructure & Construction Support

Critical repairs and stabilization when it matters most.

■ Environmental & Debris Services

Safe, compliant cleanup and remediation at scale.

■ Specialized Event Response

Support for pandemics, civil unrest, oil spills, and more.

Visit: www.Ashbritt.com or call

1-800-244-5094

to speak with our response experts.

 **AshBritt**
There When You Need Us





PUTTING YOU ON THE ROAD TO RECOVERY

We are grateful for the opportunity to assist in your recovery efforts. We stand ready to serve.

COURSE DEVELOPMENT ESSENTIALS 101

Time: 3:00 – 5:00 P.M.

Location: Virtual

Description: You have knowledge and experience that could benefit your coworkers – but how do you turn that into effective training?

Many professionals are asked to develop courses or sessions without any formal background in instructional design.

This introductory workshop helps bridge that gap, offering a foundation to help you communicate your expertise in a clear, structured way.

In this interactive session, you'll learn how to:

- Translate your subject matter expertise into clear and actionable learning objectives
- Understand your role in the development process
- Prepare for your first development meeting with confidence

You may not leave with a PhD in instructional design – but you will leave with the tools and clarity to contribute meaningfully to course development.

Instructor:

Mitchell Carbajal,

Mitigation Training Coordinator, FDEM

SKYWARN BASIC STORM SPOTTER

Time: 3:00 – 5:00 P.M.

Location: Virtual

Description: In most years, thunderstorms, tornadoes and lightning cause hundreds of injuries and deaths and billions in property and crop damages. To obtain critical weather information, the National Weather Service (NWS) established SKYWARN®, a volunteer program of trained severe weather spotters. These volunteers help keep their local communities safe by providing timely and accurate reports of severe weather to the National Weather Service. This course covers the basics of being a SKYWARN Spotter. The goal of the course is to provide baseline training for all spotters through multiple modules covering the procedures for spotting (including communication and spotter report criteria) and safety considerations for all hazards.

Instructor:

Kelly Godsey, *Meteorologist & Senior Service Hydrologist, NWS Forecast Office*



We fund disaster recovery contractors.
Scan this QR code to learn more!



To learn more, contact our
Florida Lead Director, Ken Lawson.
Ken@atlysglobal.com
813.751.9899

BUILD YOUR RESUME!

Time: 8:00 – 10:00 A.M.

Location: Windsong 4

Description: Are you preparing to enter the dynamic world of emergency management at the local, state, federal levels? Exploring an opportunity in the private sector? The resume is an important component of your applications that serves as an opportunity to showcase your trajectory, achievements, and skillsets. This workshop will explore resume styles, understanding resume essentials, how to best represent your skills and qualifications, reviewing your resume for alignment with the job and career sector you are seeking, effective cover letters and attachments, and resume submission methods across various platforms. Whether you are just starting your career or looking to refine your resume, this workshop will equip you with tools to make your resume a key asset in your career journey.

Instructor:

Caitlyn Gillespie, *Deputy State Meteorologist & State Watch Officer, FDEM*

COMMUNITY PLANNING FOR DISASTER RECOVERY (AWR-356)

Time: 8:00 A.M. – 5:00 P.M.

Location: Windsong 2

Description: Disaster Recovery is a complex, costly, and potentially lengthy process. Depending on the scope of a disaster, recovery efforts can last years and cost millions of dollars. Planning has a direct positive impact on a community's ability to recover from disasters. Planning for disaster recovery before disasters occur can significantly speed up and facilitate the post-disaster recovery process. Community Planning for Disaster Recovery is an eight-hour awareness-level course that provides facilitated discussions on key concepts for disaster recovery planning, including the benefits of pre-disaster planning, key elements, and the plan development process. This course will prepare participants to initiate disaster recovery plans and participate in the long-term recovery planning process in their own communities through the review of case studies and existing disaster recovery plans.

Instructors:

Andrew Rumbach, *Associate Professor, Department of Urban and Regional Planning, University of Colorado Denver*

Emily Kukulies, *Tenured Professor & Senior Responder, University of Hawaii, American Red Cross*

LEADERSHIP DEVELOPMENT: BEING A LEADER VS. BEING A BOSS

Time: 8:00 – 9:00 A.M.

Location: Windsong 12

Description: Learn to be a true leader by building a skills tool kit filled with qualities like vision, creativity, innovation, collaboration, and teamwork.

- Define the 6 differences between a leader and a boss to determine how one is more effective than the other.
- Discuss the new day-to-day job responsibilities and skill sets faced during the transition from individual contributor to leader.
- Explain how to utilize the 5-step approach to adaptive leadership to match the right task, employee and leadership development style when assigning work and providing growth opportunities.

Instructors:

Marianne Chance Worthington, *Leadership Coach and Speaker*

Tuesday Break Schedule

7:00 – 8 A.M. | Windsong 7 & 8

Breakfast sponsored by



10:00 – 10:15 A.M. |

Windsong Prefunction Area

Morning Coffee Break
sponsored by



12:00 – 1:00 P.M. | Windsong 7 & 8

Lunch sponsored by



2:30 P.M. – 3:00 P.M. |

Windsong Prefunction Area

Snack Break
sponsored by



5:30 – 7:30 P.M. |

Windsong Prefunction Area & Fountain Lawn

Evening Reception
sponsored by



LESS DAMAGE, LESS DRAMA: THE MITIGATION PLANNING PLAYBOOK

Time: 8:00 A.M. – 12:00 P.M.

Location: Windsong 11

Description: Join FDEM's Planning Unit to explore disaster mitigation planning. This course covers pre- and post-disaster planning, program and activity enhancements, and practical tips for ongoing mitigation. Gain the tools you need to reduce your community's long-term vulnerabilities.

Instructors:

Angie Odell, *Mitigation Planning Manager, FDEM*
Mitchell Budihas, *Mitigation Planner, FDEM*

FEMA PUBLIC ASSISTANCE COST ESTIMATION: FROM INITIAL DAMAGE ASSESSMENTS TO PROJECT DEVELOPMENT

Time: 8:00 – 10:00 A.M.

Location: Windsong 10

Description: This workshop introduces FEMA Public Assistance (PA) applicants to key cost estimation methodologies used at different stages of the disaster recovery process. Participants will learn how estimation techniques can vary for Initial Damage Assessments (IDAs), Joint Preliminary Damage Assessments (JPDAs), and actual project development. The session covers FEMA Cost Codes, historical cost data, and other estimation methodologies and tools that support IDAs to justify a federal disaster declaration, JPDAs to refine eligible damages, and PA project development to finalize costs. Special emphasis will be placed on how early tracking and documentation of cost data can accelerate the transition from assessment to project formulation. The workshop includes two hands-on cost-estimating scenarios and an introduction to FEMA's Cost Estimating Format (CEF) methodology, providing a practical overview on the development and refinement of cost estimates at each stage of the process.

Instructors:

Zachary Bell, *Deputy Programmatic Team Lead & Insurance Specialist, FDEM*
Collin Kenline, *Public Assistance Programmatic Reviewer, FDEM*

A COMPREHENSIVE APPROACH TO F-ROC ADMINISTRATION (FL-FROC-653)

Time: 8:00 – 10:00 A.M.

Location: Windsong 9

Description: In this course, participants will gain essential knowledge and practical skills to effectively assess, plan, and prepare their entities and organizations for the Florida Recovery Obligation Calculation (F-ROC) and tools. This course uses interactive discussions, case studies, and group exercises to allow participants to actively engage with peers and develop practical skills, which will ultimately support their ability to perform these activities more efficiently in the future and secure post-disaster funding quicker. By the end of this course, participants will have a comprehensive understanding of the Disaster Readiness Assessment process, the development and review of Customized Abatement Plans, the importance of a Post-Disaster Questionnaire, and how to use F-ROC forms and documentation to simplify their recovery process.

Instructors:

Melissa Foggy, *Deputy Bureau Chief of Recovery, FDEM*
Ismael Colon, *F-ROC Project Manager and Admin & Management Cost Team Lead, FDEM*
Matias Ramirez, *Learning and Professional Consultant, KPMG*

LEADERSHIP DEVELOPMENT: MASTERING TEAM COMMUNICATION

Time: 9:00 – 10:00 A.M.

Location: Windsong 12

Description: Communication requires constant attention because human interactions are dynamic and multifaceted.

- Complete a unique interpersonal style inventory to discover your strengths and challenges.
- Demonstrate how to provide clear and concise communication to a team member.
- Identify how to lead an effective and productive team meeting that saves time, makes objectives clear and keeps everyone on the same page.

Instructors:

Marianne Chance Worthington, *Leadership Coach and Speaker*



CONTACT
response@garner-es.com
garner-es.com
(800)-4-GARNER

TEXAS
952 Echo Lane
Suite 400
Houston, TX 77024

FLORIDA
3035 Jackson Bluff Rd.
Tallahassee, FL 32304

A national leader in comprehensive catastrophic preparedness, response, and recovery.

Garner is a Texas based Emergency Response Company successfully executing Disaster Response and Recovery services domestically and internationally for over 40 years. Garner's experience in the field of emergency planning and response is unparalleled anywhere in the world.

From **Bolivia** to **Venezuela** to the **World Trade Center**, from **Tropical Storm Allison** to **Katrina** to **Harvey & Dorian**, Garner's forward-thinking approach, experience, and turn-key management embraces total **unity of effort** enhancing speed of recovery and community resilience.

PLAN. PREPARE. RESPOND. RECOVER.



Garner is a K-Solv Group Company

www.garner-es.com



LEADERSHIP DEVELOPMENT: TEAM RELATIONSHIP MANAGEMENT

Time: 10:15 A.M. – 12:00 P.M.

Location: Windsong 12

Description: For business to run smoothly, we need people who can work together; understand one another; be on the same page; and have healthy, productive, team-oriented relationships. Explain how to use a resolution process to solve conflict that arises between leaders and employees. Recognize how to mediate conflict between two employees.

Instructor:

Francis Miranda, *Leadership Speaker and Trainer*

NQS – HISTORICAL RECOGNITION

Time: 10:15 A.M. – 12:00 P.M.

Location: Windsong 4

Description: This workshop will focus on preparing agencies on the historical recognition process within the NQS framework & recognition of special response teams. NQS Historical Recognition is an opportunity to earn recognition by the State of Florida for past education, training, and experience in one or more EOC positions. In this session, the FDEM Credentialing Unit will provide an overview of Historical Recognition and walk participants through everything they need to know to take advantage of this limited-time process, including the steps on how to apply what documentation must be submitted with your application to be successful, and key deadlines that should be kept in mind.

Instructor:

Ian-Paul Gadea Guidicelli, *SERT Chief and Bureau Chief of Response, FDEM*

Bailey Vandewalle, *EOC Credentialing Coordinator, FDEM*

F-ROC TO THE MAX: ARE YOU LEAVING MONEY ON THE TABLE?

Time: 10:15 A.M. – 12:00 P.M.

Location: Windsong 9

Description: Don't miss out on an exciting panel discussion that will transform your approach to Public Assistance. In this session, experts will highlight the advantages of the F-ROC Program and how to maximize your time to receive more money upfront, more quickly! Experts from the Florida Division of Emergency Management (FDEM) and KPMG advisors will share tips on how to maximize your F-ROC score. Participants will also gain valuable perspectives on the relationship between FEMA, FDEM, and local agencies during the recovery process.

Instructors:

Melissa Foggy, *Deputy Bureau Chief of Recovery, FDEM*

Ismael Colon, *F-ROC Project Manager and Admin & Management Cost Team Lead, FDEM*

Samantha Sicard, *Director, KPMG*

CYBERSECURITY LEADERSHIP AND STRATEGY PROFESSIONAL EDUCATION PROGRAM

Time: Monday – Wednesday, 8:00 A.M. – 12:00 P.M.

Location: GHI

Description: The Cybersecurity Leadership and Strategy Professional Education Program is designed to arm elected officials, municipal and state leaders with essential skills in cybersecurity policy, strategy, and response. The program focuses on the requirements of the 2022 Local Government Cybersecurity Act, Florida Statute Section 282.3185.

Instructor:

Alexander Crowther, *Florida International University, Jack D. Gordon Institute*



Emergency Management

It's in our DNA



LOCAL COORDINATING OFFICERS**Time:** 1:00 – 5:00 P.M.**Location:** Windsong 10

Description: This course provides key local staff with updated information on state and federal disaster assistance programs and processes, including statewide mutual aid, the role of the State EOC, and FEMA's Individual Assistance, Public Assistance, and Hazard Mitigation Programs. The focus is on management issues that local response and recovery officials may face in relationship with state and federal partners.

Instructors:**Kevin Guthrie**, *Executive Director, FDEM***Ian-Paul Gadea Guidicelli**, *SERT Chief and Bureau Chief of Response, FDEM***Melissa Shirah**, *Recovery Bureau Chief, FDEM***Orlando Arrindell**, *Deputy Bureau Chief of Recovery, FDEM***Ian Ohlin**, *State Individual Assistance Officer, FDEM***MANY ROADS TO RECOVERY (FL-625)****Time:** 1:00 – 5:00 P.M.**Location:** Windsong 11

Description: This multi-faceted four-hour course provides participants with an in-depth understanding of the various strategies an applicant can utilize on their path to reimbursement for eligible costs under the FEMA Public Assistance Program. Participants will explore the pros and cons of each strategy, gaining insight into how to navigate the reimbursement process effectively.

Instructors:**Collin Kenline**, *Public Assistance Programmatic Reviewer, FDEM***Stephane Malet**, *Grant Program Manager, FDEM***HURRICANE MARINE DEBRIS: BEST MANAGEMENT PRACTICES AND RESOURCE PROTECTION****Time:** 1:00 – 5:00 P.M.**Location:** Windsong 4

Description: Hurricane marine debris can often be challenging to assess and/or remove. Protected species and sensitive habitats present throughout the state can add an additional layer of needed considerations in response planning. Through the Natural Resource Advisor Program, resource managers across Florida are available to aid in marine debris assessments and removal planning. This program allows for real-time updates on post storm resource concerns and conditions, aiding in compliance with best management practices (BMPs) and thereby facilitating a more streamlined and environmentally compliant response and removal process while protecting and preserving Florida's precious natural resources.

Throughout this course, we will provide an overview of Florida's sensitive habitats and protected species often encountered, review the BMPs for marine debris removal operations, present permitting and compliance guidance, review several removal case studies, and discuss additional resources to aid in marine debris removal and response planning.

Instructors:**Jennifer L. McGee, Ph.D., M.Sc.**, *Marine Debris Program Administrator, Florida Fish and Wildlife Conservation Commission (FWC)***Timyn Rice**, *Scientific Support Coordinator, FWC***Hannah Westervelt**, *Environmental Administrator, Florida Department of Environmental Protection (FDEP)***Melynda Brown**, *Southwest Florida Aquatic Preserves Manager, FDEP*



40 Years Of Innovation In Emergency Management

Since 1985, IEM has been a trusted partner in helping communities nationwide prepare for, respond to, recover from, and mitigate against disasters. Using four decades of real-world experience and **advanced technology**, the IEM team delivers **innovative, data-driven solutions** that build lasting resilience.

IEM Specializes in:

- Disaster Response & Recovery
- Emergency Planning
- Grants Management
- Hazard Mitigation & Resilience
- Infrastructure
- Long-term Recovery & Economic Development
- Program Management (lifecycle from design & implementation to closeout)
- Surge Staffing & Capacity Building
- Training & Exercises

Committed to Florida. Driven by Service. At IEM, we are proud to support Florida's emergency managers, most recently answering the call in Milton and Helene. From immediate response to long-term recovery, we help communities rebuild stronger, safer, and more resilient than ever.

Easy to Access Solutions. Competitively procured by the State of Florida, IEM services are available for use by counties, municipalities, universities, colleges, and school districts under contract number 80101500-20-1.



Sign up to receive relevant news clips in your inbox every weekday morning and occasional IEM-specific news and/or information.

PROCUREMENT USING THE F-ROC APPROACH (FL-FROC 650)

Time: 1:00 – 5:00 P.M.

Location: Windsong 9

Description: Explore Public Assistance procurement management through the innovative lens of the F-ROC Approach. This course delves into the fundamentals of procurement processes and strategies, empowering participants with the knowledge and tools to optimize procurement activities and achieve organizational objectives effectively.

Instructors:

Jenna Simios, *Consultant, KPMG*

Elizabeth Caison, *Region 5 Recovery Coordinator, FDEM*

Kailyn Allen, *Compliance Specialist Lead, FDEM*

LEADERSHIP DEVELOPMENT: THE LEADER AND THE WORK

Time: 1:00 – 2:45 P.M.

Location: Windsong 12

Description: Being a leader is about balancing people and projects, vision and tasks.

- Utilize time management principles to prioritize your current task lists.
- Explain how to properly use delegation to create better opportunities and bench strength.
- Identify what stress is and how to reframe and embrace it.

Instructor:

Marianne Chance Worthington, *Leadership Coach and Trainer*

LEADERSHIP DEVELOPMENT: MAKING HIGH IMPACT DECISIONS

Time: 3:00 – 4:00 P.M.

Location: Windsong 12

Description: Organizational leadership and team members expect leaders to make informed and well-thought-out decisions that will have a positive impact.

- Outline the thought process needed to make thorough and effective operational decisions.
- Identify when employees should be empowered to make decisions.
- Discuss post-decisions analysis and what can be learned from the experience.

Instructor:

Marianne Chance Worthington, *Leadership Coach and Trainer*

LEADERSHIP DEVELOPMENT: PERFORMANCE MANAGEMENT METHODS

Time: 4:00 – 5:00 P.M.

Location: Windsong 12

Description: Performance management is the foundation of effective leadership, and many tools are available to help develop employees.

- Identify how to effectively communicate performance expectations and progress.
- Explain how to create effective SMART goals for both leaders and employees.
- Discuss the importance of professional development plans in helping employees grow their careers.

Instructor:

Marianne Chance Worthington, *Leadership Coach and Trainer*

Congratulations
**TO THIS YEAR'S
HONOREES**



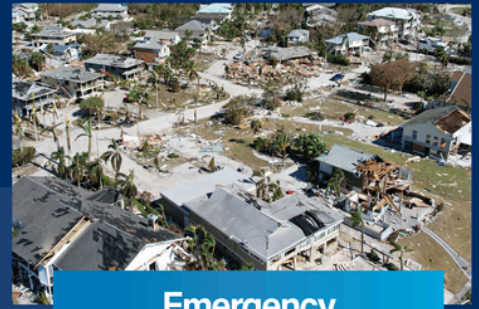
AWARDS
Gala

Be stronger than before®

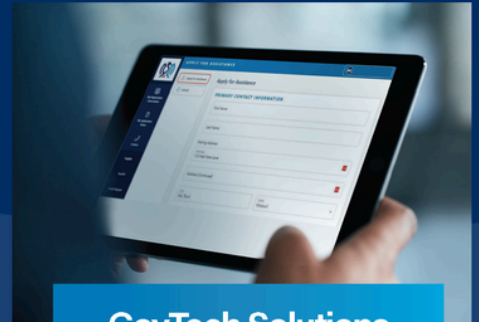
During critical moments and times of growth, the Tidal Basin team is here for you.

We specialize in delivering complex programs and executing rapid contingency operations when every second counts. Whether it's deploying temporary housing after a hurricane, managing multimillion-dollar federal recovery programs, or providing technical consulting, we combine proven systems, skilled teams, and real-world readiness to every mission.

Together with our MLU Services division, we integrate wraparound disaster response services, field operations, and program compliance into one seamless response — empowering communities and organizations to be stronger than before.



Emergency Management



GovTech Solutions



Community Development & Infrastructure

tidalbasingroup.com



VIRTUAL STUDENT INVESTMENT PATHWAY: BUILD YOUR RESUME!

Time: 8:00 – 10:00 A.M.

Location: Virtual

Description: Are you preparing to enter the dynamic world of emergency management at the local, state, federal levels? Exploring an opportunity in the private sector? The resume is an important component of your applications that serves as an opportunity to showcase your trajectory, achievements, and skillsets. This workshop will explore resume styles, understanding resume essentials, how to best represent your skills and qualifications, reviewing your resume for alignment with the job and career sector you are seeking, effective cover letters and attachments, and resume submission methods across various platforms. Whether you are just starting your career or looking to refine your resume, this workshop will equip you with tools to make your resume a key asset in your career journey.

Instructor:

Caitlyn Gillespie, *Deputy State Meteorologist & State Watch Officer, FDEM*

VIRTUAL: USACE

Time: 10:15 A.M. – 12:00 P.M.

Location: Virtual

Description: Topics will include our authorities and capabilities related to PL 84-99 as well as our Stafford act support to FEMA. We will focus on our flood fight authority under PL 84-99 as well as our ESF3 support to FEMA, focusing on Temporary Power, Temporary Roofing, Temporary Housing, Critical Public Facilities, Debris and Infrastructure Assessment.

Instructors:

Logan Wilkinson, *Chief, SAJ Emergency Management Branch*

Angie Huebner, *Biologist, US Army Corps of Engineers*

Alison Blitch

Ashley Foster

VIRTUAL: FLORIDA SENIOR OFFICIALS COURSE

Time: 10:15 A.M. – 12:00 P.M.

Location: Virtual

Description: During disasters, it is imperative for local, state, and federal partners to relay communications and decisions effectively. This course discusses best practices for Senior Officials in Florida (executives, elected and appointed officials, city/county managers, agency administrators, etc.) on how to support their emergency management personnel during disasters. A large focus will be on communication and information sharing.

Instructor:

Kevin Guthrie, *Executive Director, FDEM*

VIRTUAL STUDENT INVESTMENT PATHWAY: HOW TO DEVELOP A PERSONAL BRAND. STAND OUT IN AN APPLICANT POOL!

Time: 10:15 A.M. – 12:00 P.M.

Location: Virtual

Description: Learn how to create a personal brand that helps you stand out in a competitive job market! Participants will learn how to identify their unique strengths, passions, and values, and use that information to build a strong online presence on platforms like LinkedIn. This workshop will cover strategies for networking, tailoring resumes, and preparing for interviews to showcase your personal brand effectively. Students will also gain practical tips on maintaining consistency and authenticity in their professional image. through interactive activities and real-life examples, attendees will leave with actionable steps to craft and promote their personal brand.

Instructor:

Avery Michaud, *FTEM Planner, FDEM*

USING WHAT YOU HAVE; LEVERAGING EXISTING SYSTEMS AND TOOLS TO EXPAND AND AUTOMATE YOUR PROGRAM

Time: 8:00 – 10:00 A.M.

Location: Windsong 4

Description: This workshop is designed to help emergency management professionals make the most of the tools and systems they either already have or can easily obtain. We'll discuss common challenges like securing stakeholder buy-in, working within tight budgets and limited staffing, and overcoming IT hurdles. We'll also explore practical ways to streamline processes, save costs, and use automation to ease workloads. By the end, you'll have fresh ideas and proven strategies to strengthen preparedness, response, and communication across your entire program.

Instructors:

Jen Grice, *Director, Alachua County Emergency Management*

David Peaton, *Assistant Director, Alachua County Emergency Management*

AIR OPERATIONS: ROTARY-WING RESPONSE SUPPORT

Time: 8:00 – 10:00 A.M.

Location: Windsong 9

Description: Join this informative workshop surrounding rotary-wing support operations in response to all-hazards emergencies, including Search and Rescue, Aerial Recon, Underslung Loads, Personnel Hoisting Operations, Evacuations, and more. An interactive discussion, use-case scenarios, and a live demonstration of how rotary-wing support can be utilized in an emergency response environment will benefit FTEM attendees.

Instructor:

Lieutenant Cara Cain

Rob Dietrich, *Air Operations Branch Director, FDEM*

Nathan Normoyle, *President, Echo 1 Emergency Logistics Inc.*

MITIGATE SMARTER, NOT HARDER: APPLICATION DEVELOPMENT AND BEST PRACTICES

Time: 8:00 A.M. – 12:00 P.M.

Location: Windsong 2

Description: Identifying eligible projects and navigating the application process can be a daunting task. This workshop will break down the requirements of the Hazard Mitigation Grant Program (HMGP) and support a smooth application process. We will walk through application requirements, identify common pitfalls applicants run into, and discuss how to avoid such pitfalls. Participants will learn the planning, programmatic, technical, and environmental requirements of the HMGP to make future applications a breeze.

Instructors:

Angie Odell, *Mitigation Planning Manager, FDEM*

Amanda Chin, *Lead Environmental Specialist, FDEM*

Claudia Purser, *TechUnit Engineering Manager, FDEM*

Wednesday Break Schedule

7:00 – 8:00 A.M. | Windsong 7 & 8

Breakfast sponsored by



10:00 – 10:15 A.M. |

Windsong Prefunction Area

Morning Coffee Break
sponsored by



12:00 P.M. – 1:00 P.M. | Windsong 7 & 8

Lunch sponsored by



2:30 P.M. – 3:00 P.M. |

Windsong Prefunction Area

Snack Break
sponsored by



5:30 – 7:30 P.M. |

Grand Cypress ABC

Evening Reception sponsored by



LEADERSHIP DEVELOPMENT: COMMUNICATING WITH TACT IN DIFFICULT SITUATIONS

Time: 8:00 – 9:00 A.M.

Location: Windsong 12

Description: There are some conversations that require the utmost skill in diplomacy and finesse. Describe best-practice communication techniques to use in difficult conversations. Express strategies to effectively handle disagreements or misunderstandings. Articulate methods that help focus on getting a correct message.

Instructor:

Chad Prewett, *International Speaker and Trainer*

LEADERSHIP DEVELOPMENT: MANAGING CONFLICTS AND PREVENTING COMMUNICATION PROBLEMS

Time: 9:00 – 10:00 A.M.

Location: Windsong 12

Description: Conflict can occur in any organization when employees with diverse cultures, backgrounds, work values and priorities work together. Describe how to utilize a positive and constructive mindset. Explain tactics to handle other people's conflicts. Identify ways to prevent or reduce defensive behavior.

Instructor:

Chad Prewett, *International Speaker and Trainer*

FLORIDA DEBRIS MANAGEMENT

Time: 8:00 A.M. – 5:00 P.M.

Location: Windsong 11

Description: This course will serve as the foundation for the Florida Debris Management Series. This course will focus on identifying debris operations, contracts, and expedited Public Assistance project best practices during disaster response and recovery.

Instructors:

Ian-Paul Gadea Guidicelli, *SERT Chief and Bureau Chief of Response, FDEM*

Porschica Griffith, *Response Curriculum Developer & Trainer, FDEM*

Jordan Irving, *Deputy Director of Contracts, FDEM*

FDEM TERRORISM RESPONSE PLANNING, TRAINING, AND EXERCISE TOOLKIT OVERVIEW

Time: 8:00 A.M. – 12:00 P.M.

Location: Windsong 5 & 6

Description: Join Hagerty Consulting and FDEM for an in-depth session introducing the FDEM Terrorism Response Planning, Training, and Exercise Toolkit. This comprehensive resource provides emergency management and law enforcement partners with templates, guidance, and tools to develop, train, and exercise their own tailored Terrorism Response Plan.

The session will incorporate key takeaways from the 2024 FDEM Statewide Terrorism Exercise Series, offering insights on enhancing preparedness for complex coordinated terrorist attacks in both urban and rural settings. Participants will gain a clearer understanding of the evolving threat landscape and the resources available to support terrorism preparedness efforts in their jurisdictions.

Instructors:

Claire Doyle, *Project Manager, Hagerty Consulting*

Zach Annett, *Senior Managing Associate, Hagerty Consulting*

F-ROC PERMANENT WORK

Time: 8:00 A.M. – 12:00 P.M.

Location: Windsong 10

Description: This course focuses on the management and execution of permanent work projects, with a detailed look at FEMA Category F (utilities). Participants will learn about funding mechanisms, project planning, and execution strategies for long-term recovery efforts. The course emphasizes compliance, accountability, and the critical role of public infrastructure in recovery.

Instructors:

Ismael Colon, *Project Manager and Admin & Management Cost Team Lead, FDEM*

Matias Ramirez, *Learning Professional and Consultant, KPMG*

Emily Ourzdine, *Manager of Grants Management, KPMG*

**CYBERSECURITY LEADERSHIP AND
STRATEGY PROFESSIONAL EDUCATION
PROGRAM**

Time: Monday – Wednesday, 8:00 A.M. – 12:00 P.M.

Location: GHI

Description: The Cybersecurity Leadership and Strategy Professional Education Program is designed to arm elected officials, municipal and state leaders with essential skills in cybersecurity policy, strategy, and response. The program focuses on the requirements of the 2022 Local Government Cybersecurity Act, Florida Statute Section 282.3185.

Instructor:

Alexander Crowther, *Florida International University, Jack D. Gordon Institute*

**FOUNDATIONS OF DISASTER FAMILY
REUNIFICATION AND FAMILY ASSISTANCE
CENTERS**

Time: 10:15 A.M. – 12:00 P.M.

Location: Windsong 9

Description: The need for timely and official information is continually identified as an important issue by families after a mass crisis incident. Family Assistance Centers and Reunification Centers provide responding agencies with the ability to provide a consistent and coordinated response to victims and families by centralizing the flow of information and services. This foundational workshop, led by UF-Health Jacksonville Emergency Preparedness, will explore the similarities and differences between Disaster Family Reunification Centers and Disaster Family Assistance Centers (FACs), tips for building partnership relations, location and infrastructure considerations, legal and security concerns, and support services and resources. Lessons learned from both reunification and assistance center events will prepare emergency management and mass care professionals for the successful implementation of FACs in a mass casualty incident.

Instructors:

Jennifer Silvey-Cason, *Disaster Manager, UF Health Jacksonville*

Christina Harris, *Bureau Chief, Division of Advocacy and Grants Management*

Cindy Chambers, *Program Administrator, Bureau of Advocacy and Grants Management, Division of Victim Services*

Lisa Mirello, *FBI Victim Specialist*

Michelle Thorne, *FBI Victim Specialist*

MISSION FAILURE STARTS WITH BURNOUT.

But burnout isn't the only threat.
Confusion. Chaos.
Community collapse.

CAPACITY PATH IS YOUR STRATEGIC LINE OF DEFENSE.

- Deep care crisis management
- Street-level stabilization
- Life-saving field intelligence

TURNKEY. TACTICAL. TRUSTED.

LET'S BUILD YOUR BACKLINE.

*The care and clarity your frontline
depends on.*

capacitypath.com

Capacity
Path



CYBER FLORIDA WORKSHOP

Time: 10:15 A.M. – 2:45 P.M.

Location: Windsong 4

Description: Based on best practices and comprehensive toolkits built by Cyber Florida, Emergency Management leaders will receive training and resources to address cascading cyber incidents, events, and threats in their organizations. Additionally, attendees will have the opportunity to learn about the latest addition, ESF #20 on Cybersecurity, and how this needs to be incorporated into Comprehensive Emergency Management Plan (CEMP) annexes.

Instructors:

Bryan Langley, *Lead Program Manager, Cyber Florida*

Emilio Salabarría, *Sr. Program Manager Cybersecurity*

LEADERSHIP DEVELOPMENT: COACHING TEAM MEMBERS

Time: 10:15 A.M. – 12:00 P.M.

Location: Windsong 12

Description: Coaching is crucial to the success of a team. Learn the coaching skills to guide employees and, ultimately, the entire team forward. Express what coaching is, why it is important and when it is more effective to use it. Discuss the steps to coach individuals and the team. Summarize opportunities to integrate peer coaching to reinforce positive behaviors on your team.

Instructor:

Chad Prewett, *International Speaker and Trainer*

Followers come in second.

Change waits for no one. Don't sit back. Work with future-focused advisors who embrace technology-driven strategies, so you can take charge of change.

rsmus.com



INDELIBLE



Trusted to **Serve** and **Deliver**

Our firm has a **proven track record** of delivering **comprehensive** emergency response and recovery services across the **nation**. Drawing on our **extensive experience**, we help **communities recover** in the aftermath of disasters and **empower individuals** to navigate their recovery options with **confidence**.

Our Value

We excel in forging **strategic alliances** with **industry leaders** while staying rooted in the communities we serve—ensuring that our solutions are not only advanced, but also informed by **real community needs**. Through our partnerships and community response we deliver **coordinated, people-first programs** that drive **human-centric outcomes**.

How We Can **HELP** You

Indelible delivers expert **emergency response and recovery consulting**, helping communities and organizations maximize available resources. With **strategic planning, incident coordination, and FEMA-compliant solutions**, we **streamline operations** and enhance **resilience**—ensuring **swift, action** before, during, and after disaster.

**INDELIBLE**

Our Clients:

- Florida Division of Emergency Management
- Florida Department of Management Services
- Florida Department of Children and Families
- Florida Department of Health
- Florida Department of Economic Opportunity
- Florida Department of Education
- Florida Department of Business and Professional Regulation
- Florida Agency for Health Care Administration
- Lee County

ONE INDELIBLE, MANY SOLUTIONS



@ThinkIndelible

NAICS Codes

541611|54151S|624230
541990|541519|541618
541618|611430

**INDELIBLE**

THINKINDELIBLE.COM

BRIDGING THE GAP: HOW FLORIDA'S REGIONAL PLANNING COUNCILS SUPPORT EMERGENCY MANAGEMENT

Time: 1:00 – 2:45 P.M.

Location: Windsong 9

Description: Regional Planning Councils (RPCs) play a vital role in supporting emergency management across Florida by providing expertise, resources, and regional coordination. This session will explore the diverse ways RPCs can assist emergency managers in developing local mitigation strategy plans, disaster recovery strategies, resilience initiatives, trainings, exercises, and GIS mapping. Participants will gain insight into collaborative opportunities, successful project examples, and how RPCs can enhance local and regional preparedness, response, and recovery efforts. Whether you are a local emergency manager, planner, or policymaker, this workshop will showcase how leveraging RPC resources can support and strengthen your community.

Instructors:

Curtis Knowles, *Director of Emergency Management and Community Projects, Central Florida Regional Planning Council*

Jerri Sackett, *Projects Senior Planner, Central Florida Regional Planning Council*

INDIVIDUAL ASSISTANCE: THE LOCAL ROLE (FL-680)

Time: 1:00 – 5:00 P.M.

Location: Windsong 10

Description: This course breaks down the fundamentals of Individual Assistance (IA), which is designed to coordinate assistance provided to individuals and households recovering from disaster. Topics include overviews of federal, state, local, and non-profit disaster assistance programs, information sharing and privacy, and planning for disaster housing missions. Students will leave this course with a better understanding of how to better support individuals in their communities by leveraging all available assistance mechanisms.

Instructors:

Ian Ohlin, *State IA Officer, FDEM*

Shannon Hagan, *Deputy State IA Officer, FDEM*

LEADERSHIP DEVELOPMENT: COACHING IN CHALLENGING TEAM SITUATIONS

Time: 1:00 – 2:45 P.M.

Location: Windsong 12

Description: Learn how to approach challenging team situations as an opportunity to build, enhance or strengthen a relationship that affects the leader, the employee and the team. Summarize how to approach difficult conversations productively. Discuss strategies for using the steps for coaching during difficult situations. Practice the skills of effective communication under difficult circumstances.

Instructor:

Chad Prewett, *International Speaker and Trainer*

ALERT FL WORKSHOP – EMERGENCY ALERT

Time: 1:00 – 2:45 P.M.

Location: Windsong 2

Description: This workshop is designed to educate and continue to develop standard best practices regarding the sending of Emergency Mass Notifications to the public via the Alert FL system and IPAWS, as well as optimizing Alert FL Everbridge Organization settings, roles, templates, and other features prior to a disaster. Participants are encouraged to bring laptops for hands-on guidance with custom user role development, template building, and undesired broadcast protection.

Instructors:

Woody Harvey, *Program Manager and State Watch Office Supervisor, FDEM*

Scott Nethero, *Technical Account Manager, Everbridge*

MITIGATION SUBSTANTIAL DAMAGE ASSESSMENTS AND POST-DISASTER TRAINING FOR EMERGENCY MANAGERS

Time: 1:00 – 5:00 P.M.
Location: Windsong 5 & 6

Description: Did you know that your local Floodplain Manager and/or Building Official have post-disaster responsibilities that can affect your community's flood insurance policies and grant opportunities? This session will provide an understanding of the National Flood Insurance Program's (NFIP) substantial damage requirements as it relates to assessments, determinations, and permitting repairs post-disaster. Participants will learn the successes and challenges of the first DRRS Section 1206 Substantial Damage Assistance operation the state has led through Debby, Helene, and Milton, and how local communities are continuing their efforts to maintain compliance.

Instructors:
Hailey Anderson, Bureau of Mitigation Lead Ordinance Coordinator, FDEM

WHERE'S THE WATER COMING FROM?

Time: 3:00 – 5:00 P.M.
Location: Windsong 9

Description: Flooding is the most frequent severe-weather related threat and the costliest natural disaster in the United States. To improve flood warning communication and help emergency managers prepare for and respond to flooding, the National Weather Service (NWS) has begun to add new experimental flood inundation mapping services to its suite of forecast products. These new services complement and support the issuance of flood watches and warnings by providing near real time, high-resolution, street-level visualizations. This workshop will explore basic concepts in the service of flood events, NWS products and definitions, Flood Inundation Mapping (FIM) services within Florida, FIM capabilities and limitations, and future FIM applications.

Instructor:
Kelly Godsey, Meteorologist & Senior Service Hydrologist, NWS Forecast Office

FDLE'S FLORIDA CRITICAL INFRASTRUCTURE AND KEY RESOURCES (FL-CIKR) PROGRAM

Time: 3:00 – 5:00 P.M.
Location: Windsong 4

Description: This presentation will educate attendees on FDLE's statewide Florida Critical Infrastructure and Key Resources (FL-CIKR) program, commonly referred to as "Haystax." Presenters will cover topics such as cataloging critical infrastructure assets, conducting vulnerability and risk assessments, as well as mapping capabilities. Attendees will learn about resources available for emergency management personnel, the benefits to participating in this program, as well as the future of critical infrastructure risk management in Florida.

Instructors:
Tommy Capobianco, Deputy Director, Florida Fusion Center
Madison Johnson, Manager of the Office of Domestic Security Support, Florida Fusion Center

EARLY CAREER DEVELOPMENT AND MENTORSHIP

Time: 3:00 – 5:00 P.M.
Location: Windsong 2

Description: This panel-driven discussion is designed for aspiring and early career emergency management professionals. During the session, attendees will gain valuable insights from early career experts across various sectors within emergency management. Panelists will share their experiences navigating this career path, including strategies for job searching, networking, and key resources that supported them as recent graduates.

Instructors:
Caitlyn Gillespie, Deputy State Meteorologist & State Watch Officer, FDEM
Mason Kozac, Region 8 Regional Response Coordinator, FDEM
Connor Stolp, Radiological Emergency Program Planner, FDEM
Ian Craig, Radiological and Logistics Coordinator, Brevard County Emergency Management
John Lockwood III, Mitigation & Resiliency Coordinator, Seminole County Emergency Management
Blaze Schoembs, Preparedness Associate, Hagerty Consulting

LEADERSHIP DEVELOPMENT: MOTIVATING AND ENGAGING TEAMS

Time: 3:00 – 4:00 P.M.

Location: Windsong 12

Description: Make an immediate difference for team members and organizations by learning why motivation and engagement are important to the success of a team. Discuss why motivation and engagement of team members make a difference. Review ways to motivate and engage team members. Identify possible solutions to a specific team motivation situation.

Instructor:

Marianne Chance Worthington, *Leadership Coach & Trainer*

LEADERSHIP DEVELOPMENT: APPLYING STRATEGIC THINKING TOOLS

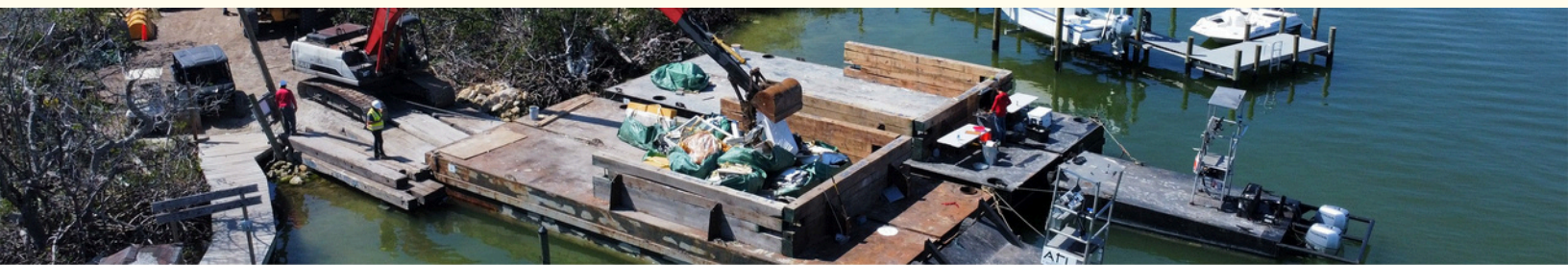
Time: 4:00 – 5:00 P.M.

Location: Windsong 12

Description: The exercises and discussions in this session will unleash creative ideas for overcoming barriers to innovative breakthroughs. Discuss strategies for releasing a flow of original ideas. Recognize how to overcome barriers to strategic thinking. Identify exercises for breaking free of thinking ruts.

Instructor:

Marianne Chance Worthington, *Leadership Coach & Trainer*



www.ATLdiversified.com

Office 800-932-7267



- ◉ Working in disaster response as a prime contractor since 1992 ◉
- ◉ Providing services tailored to fit your community's needs ◉
- ◉ Large fleet of in-house heavy equipment allowing us to complete any project ◉



WINDSONG BALLROOM

7:00 A.M.	Breakfast, sponsored by Indelible
8:00 A.M.	Presentation of Colors, Orange County Fire Rescue
8:10 A.M.	Singing of the National Anthem, Oscar Negron , <i>Orange County Fire Rescue</i>
8:15 A.M.	Welcome, Deputy Executive Director Keith Pruett , <i>FDEM</i>
8:25 A.M.	Opening Remarks, Executive Director Kevin Guthrie , <i>FDEM</i>
8:45 A.M.	Keynote, Bryan Hastings
9:30 A.M.	Closing Remarks, Executive Director Kevin Guthrie , <i>FDEM</i>
9:45 A.M.	Transition to Logistics Day



TOTAL DISASTER RECOVERY SOLUTIONS

www.drcusa.com | [in drc-emergency-services](https://www.linkedin.com/company/drc-emergency-services)

Thursday Break Schedule

7:00 – 8 A.M. | Windsong 7 & 8

Breakfast sponsored by



10:00 – 10:15 A.M. |

Windsong Prefunction Area

Morning Coffee Break
sponsored by



12 P.M. – 1:00 P.M. | Windsong 7 & 8

Lunch sponsored by



2:30 P.M. – 3:00 P.M. |

Windsong Prefunction Area

Snack Break
sponsored by



5:30 – 7:30 P.M. |

Windsong Prefunction Area & Fountain Lawn

Evening Reception
sponsored by





Trusted partner, stronger together.

Committed to Florida's
emergency response,
management, and
community recovery.



FLORIDA NATIONAL GUARD (FLNG)

Time: 10:00 A.M. – 5:00 P.M.

Location: Windsong 4

Description: The Florida National Guard (FLNG) can provide a variety of services, such as Civil Support Teams, Fatality Search and Recovery Teams, High Wheeled Vehicles & Operators, and Route Clearance.

FLORIDA STATE GUARD

Time: 10:00 A.M. – 5:00 P.M.

Location: Windsong 9

Description: The Florida State Guard (FSG) can provide Route Assistance, which includes a range of operations aimed at ensuring safe and accessible transportation routes following disasters, as well as personnel to assist with various emergency response operations.

ESF 4 & 9 : FIREFIGHTING AND SEARCH & RESCUE

Time: 10:00 A.M. – 5:00 P.M.

Location: Windsong 11

Description: ESF 4&9: Firefighting and Search & Rescue provide state support to local governments to detect and suppress urban, rural, and wildland fires resulting from a disaster condition or event, as well as to coordinate the deployment of resources for urban and non-urban search and rescue. The Urban Search and Rescue Team Task Force falls under ESF 9 and will deploy to affected areas to check for damage and injuries.

ESF 16: LAW ENFORCEMENT

Time: 10:00 A.M. – 5:00 P.M.

Location: Windsong 12

Description: ESF 16: Law Enforcement supports local law enforcement agencies with state law enforcement personnel and equipment, as well as coordinates statewide mutual aid of local law enforcement resources.

FDEM LIAISONS

Time: 10:00 A.M. – 5:00 P.M.

Location: Windsong 10

Description: FDEM Liaisons are deployed to help counties with mission management and coordination with the State EOC, serving as a vital link between county emergency management agencies and state resources, ensuring effective coordination and communication during disaster response and recovery operations.

FDEM INDIVIDUAL ASSISTANCE PRELIMINARY DAMAGE ASSESSMENT TEAM

Time: 10:00 A.M. – 5:00 P.M.

Location: Windsong 3

Description: FDEM Individual Assistance PDA Teams are groups of people conducting door-to-door assessments of residential buildings in order to verify initial assessment reported home damages. A team consists of personnel from the State, FEMA, the Small Business Administration, and the local community.

FDEM PUBLIC ASSISTANCE PRELIMINARY DAMAGE ASSESSMENT TEAM

Time: 10:00 A.M. – 5:00 P.M.

Location: Windsong 2

Description: FDEM Public Assistance PDA Teams are groups of people conducting in-person assessments of locally identified damage to critical facility infrastructure and other sites in order to validate damages recorded during the initial assessment through visual confirmation. A team consists of personnel from the state, FEMA, and the local community.



FDEM MITIGATION TEAM

Time: 10:00 A.M. – 5:00 P.M.

Location: Windsong 1

Description: Mitigation Teams can assist communities with substantial damage inspections in Special Flood Hazard Areas. Mitigation Teams can also include Historic Preservation Specialists, Administrative Assistance Staff and Supplies, Flood Certified Building Officials and Inspectors, Plans Examiners and Planners, Appraisers and Construction Cost Estimators, Permit Technicians, and Code Enforcement Officers.

FDEM INCIDENT MANAGEMENT TEAMS

Time: 10:00 A.M. – 5:00 P.M.

Location: Windsong 5

Description: Incident Management Teams (IMTs) are specialized teams organized to coordinate responses to incidents and events. A typical IMT is 8-15 people.

VENDOR BOOTHS

Time: 10:00 A.M. – 5:00 P.M.

Location: Portico East & West

Description: View exhibits to learn more about emergency resources offered, hosted by the following vendors:

- | | |
|----------------------|------------------------|
| • ACDC | • Indelible |
| • APTIM | • IRG Global |
| • AshBritt | • KPMG |
| • Atlys | • LifeScience |
| • CDR EM | Logistics |
| • CrowderGulf | • SLSCO |
| • CRS | • Tidal Basin |
| • DebrisTech | • U.S. Flood Control – |
| • Doodie Calls | Tiger Dam |
| • Echo1 Logistics | |
| • Ernst & Young | |
| • Figgers | |
| • GardaWorld Federal | |
| • Garner | |
| • Grainger | |

RESOURCE SHOWCASE

Time: 10:00 A.M. – 5:00 P.M.

Location: Outdoors – Portico Terrace

Description: View resource displays such as mobile command vehicles, cooling tents, communication trailers and more, hosted by the following vendors and partners:

- AshBritt – UTVs & Golf Carts
- CDR Health – Mobile Medical Unit
- Doodie Calls – Comfort Station & VAC Truck
- FDEM – MCV, BERG, Variable Message Boards, Vehicle Barriers & Comms Tower
- Figgers – Comms Trailer
- GardaWorld Federal – Mobile Offices
- Garner – Heavy Equipment
- IRG Global – Bunk House & Feeding Kitchen
- Lemoine – Pumps
- SLSCO – Generators
- U.S. Flood Control – Tiger Dam

Disasters do not plan ahead, **but you can.**

Hagerty can help you prepare to respond to and recover from the risks you might face tomorrow while also helping you chart a path toward a more resilient future.



To learn more, scan the QR code to the left or visit hagertyconsulting.com



EMERGENCY LOGISTICS

Rapid Response. Mission-Critical Logistics. Global Reach.

Serving Government Agencies, Private Sector, and Emergency Response Teams Worldwide

WHO WE ARE

Echo 1 Emergency Logistics is a leading provider of rapid-response logistics, aviation support, emergency management, security services and mobile Starlink satellite communications. With over 21 years of operational experience, we specialize in high-risk, time-sensitive missions across emergency, disaster, humanitarian, and conflict zones.

- Global Operations Across 9+ Countries
- Our leadership has completed over 900+ missions
- Trusted by The Florida Division of Emergency Management



CORE CAPABILITIES

Emergency Logistics & Crisis Response

- ✓ 24/7 global disaster relief operations
- ✓ Coordination of personnel, cargo, and critical life-support services

Aviation & Secure Transport Solutions

- ✓ Fleet of passenger & cargo aircraft for emergency evacuations & logistics
- ✓ In-house fleet (Casa 212, Bell 412 EP, Cessna Citation Excel, Lear 60, Beechcraft King Air 350i)
- ✓ Partner aircraft (Boeing 747, Airbus A330, Embraer 145, MD-83)

Base Camp & Housing Deployment

- ✓ Rapid-deploy shelters for 150 – 2,500+ people
- ✓ Full-service camps including food, medical support & security
- ✓ Deployment in 48-72 hours

Security & Field Medical Support

- ✓ Armed security teams, surveillance, and tactical response
- ✓ Medical teams for disaster response & humanitarian missions

Mobile Starlink Satellite Communications

- ✓ Reliable, high-speed connectivity for mission-critical operations
- ✓ Supports emergency response, remote coordination, and field teams

EXPERIENCE & PROVEN PERFORMANCE

2024 Hurricane Milton Air Support
2024 Haiti Humanitarian Evacuation
2023 Israel Emergency Evacuation Flights
2023 National Guard Troop & Gear Movement
2022 Hurricane Ian Emergency Response (SW Florida)
2020 COVID-19 National Response (1,800 Locations)

NAICS CODES & GOVERNMENT CONTRACTING INFO

NAICS Codes:

624230: Emergency & Other Relief Services
481211: Non-Scheduled Chartered Passenger Air

Transport:

541614: Process, Physical Distribution & Logistics

Consulting Services:

561210: Facilities Support Services
561612: Security Guards & Patrol Services

Government Certifications & Identifiers:

UEI: WB6DP5WEKFE6
CAGE Code: 9SPB0

TRUSTED BY



WHEN EVERY SECOND COUNTS, WE DELIVER.

Number: (800) 906-4945 | Email: sales@echo1el.com
Website: www.echo1el.com
Headquarters: Magnolia, TX

FULL-SPECTRUM EMERGENCY MANAGEMENT

A trusted partner in Florida.



PROGRAM MANAGEMENT
PLANNING + RISK REDUCTION
CLIMATE ADAPTATION + RESILIENCE
RESPONSE OPERATIONS + LOGISTICS
STAFF AUGMENTATION
RECOVERY + MITIGATION
GRANT MANAGEMENT
MUTUAL AID
ENGINEERING + ENVIRONMENTAL
DEBRIS MANAGEMENT + OVERSIGHT
DATA, TECHNOLOGY + INNOVATION
CASE MANAGEMENT + CALL CENTERS
MASS CARE + SHELTERING
HEALTH + HUMAN SERVICES



DISASTER
CONSULTING

Competent. Caring. Connected.

Working with EY

Ernst & Young LLP has a long-standing recovery practice that includes former FEMA, OIG and EM professionals.

Our highly trained forensic accountants are committed to quality and client service and have a deep bench of local resources to assist.

Learn more at ey.com/forensics/insurancefederalclaims.

Field-proven approach to financial recovery can help you:

- ▶ Deliver on recovery goals quickly
- ▶ Capitalize on funding opportunities
- ▶ Assess and manage risk

Grants management for:

- ▶ FEMA Public Assistance
- ▶ FEMA HMGP
- ▶ HUD CDBG-DR
- ▶ ARPA, CARES and more

EY services:

- ▶ Compliance analysis
- ▶ Oversight and monitoring
- ▶ Procurement, eligibility, cost reasonableness
- ▶ Closeout support
- ▶ Request for reimbursement
- ▶ Grant formulation
- ▶ Duplication of benefits
- ▶ OIG audit readiness
- ▶ Capacity building
- ▶ Technical assistance



CONTINUITY OF OPERATIONS PLANNING/CONTINUITY OF GOVERNMENT PLANNING (COOP/COG)

Time: 8:00 – 10 A.M.
Location: Windsong 1

Description: The Continuity of Operations Planning/ Continuity of Government Planning Workshop describes the National Continuity Policy, Continuity guidance, directives and background. The workshop will identify the roles and responsibilities of key personnel involved in developing and maintaining a continuity plan. Describing the essential function identification process, how to conduct a Business Process Analysis (BPA) and Business Impact Analysis (BIA).

Instructor:
Regina Harris, COOP/COG Program Manager, FDEM

WHEN THE WORLD DESCENDS 2.0

Time: 8 A.M. – 12:30 P.M.
Location: Windsong Ballroom

Description: This workshop/discussion is led by Executive Director Kevin Guthrie as he paints the picture of “when the State Emergency Response Team (SERT) descends,” an Incident Command Post (ICP) is set up, and what resources/support can be expected. This is an in-depth discussion of what resources are available, from equipment to personnel support, and how to establish and maintain communication between local, state and federal partners.

Instructors:
Kevin Guthrie, Executive Director, FDEM
Ian-Paul Gadea Guidicelli, SERT Chief and Bureau Chief of Response, FDEM
Melissa Shirah, Bureau Chief of Recovery, FDEM

HURRICANE FATALITIES: THE WHO, WHERE, WHEN, AND HOW

Time: 8:00 – 10 A.M.
Location: Windsong 4

Description: This presentation explores the critical assessment of hurricane-related fatalities, a key statistic reflecting community preparedness and resilience. Accurately determining this number is complex, with death records sometimes taking over a year to finalize. The workshop, a collaboration between the Florida Department of Health and NOAA National Hurricane Center, will delve into their methodologies for collecting data on hurricane-related deaths. They will present findings on trend analysis such as direct versus indirect fatalities, demographic and geographic impacts, causes of death, and timing in relation to the storm. Understanding these patterns is essential for refining response strategies. The presenters aim to demonstrate how this information is utilized to enhance public education and improve emergency preparedness and response plans. By gaining deeper insights into hurricane-related fatalities, communities can better strategize to reduce future storm-related deaths, ultimately fostering greater resilience against natural disasters.

Instructors:
Blake Scott, Disaster Epidemiologist, Florida Department of Health
Will Ulrich, Warning Coordination Meteorologist, National Weather Service

Friday Break Schedule

7:00 – 8:00 A.M. | Windsong 7 & 8
Breakfast sponsored by

GARDAWORLD
FEDERAL

THANK YOU TO OUR SPONSORS



Proceeds benefit the **Florida Disaster Foundation**, a direct-support organization of the Florida Division of Emergency Management that provides assistance, funding, and support in disaster response, recovery, and relief efforts, as well as vital training for emergency management professionals.



FLORIDA
DISASTER FOUNDATION

In 2022, the Florida Emergency Management Assistance Foundation was established as a **direct-support organization** of the Florida Division of Emergency Management to provide assistance, funding, and **support in disaster response, recovery, and relief** efforts, as well as **vital training** for emergency management professionals.




WHY DONATE?

- ✓ Contributes to the **immediate recovery** of communities impacted by disasters and **provides direct support** where federal assistance stops.
- ✓ Assists in recovery efforts such as **providing travel trailers** to those **impacted by recent severe weather events** throughout Florida's Panhandle.
- ✓ **Equips emergency managers** with the **training and skills needed** to effectively lead larger, more skilled teams and deal with **increasingly complex problem sets**.

Individuals and organizations can donate by visiting FloridaDisasterFoundation.org/Donate.

CONTACT US:

 FloridaDisasterFoundation.org

 2555 Shumard Oak Blvd.
Tallahassee, FL 32399

OVERVIEW OF FTEM AND THE FLORIDA DISASTER FOUNDATION

In 2022, the **Florida Emergency Management Assistance Foundation**, also known as the **Florida Disaster Foundation**, was established as a direct-support organization of the Florida Division of Emergency Management to provide assistance, funding, and support in disaster response, recovery, and relief efforts, as well as vital training for emergency management professionals.

Florida's Training for Emergency Management (FTEM) Symposium supports this mission by offering valuable opportunities to move beyond theoretical training, providing tangible tools and resources to advance the development of the emergency management profession. The second annual FTEM Symposium expands on the training initiatives that debuted in 2024 and continues to enhance the emergency management profession by bringing high demand courses into the state and developing key skills for public and private sector professionals.

2025 FTEM PLANNING COMMITTEE

Amy Godsey, *Deputy Bureau Chief of Response, FDEM*

Avery Michaud, *FTEM Planner, FDEM*

Caitlyn Gillespie, *Deputy State Meteorologist & State Watch Officer, FDEM*

Gabriela Estrella, *Training & Education Coordinator, FDEM*

Jerri Sackett, *Projects Senior Planner, Central Florida Regional Planning Council*

Lyle Briggs, *Regional Training & Exercise Manager, FDEM*

Marnie Villanueva Marrero, *Communications Director, FDEM*

Mary Thomas, *Strategic Communications Manager, FDEM*

Melissa Rudd, *State Training Officer, FDEM*

Mitchell Carbajal, *Training Coordinator, FDEM*

Porschica Griffith, *Response Curriculum Developer & Trainer, FDEM*

Rick Knowles, *Regional Training & Exercise Manager, FDEM*

Stephanie Hartman, *Deputy Communications Director, FDEM*

Ursula Walker, *Regional Training & Exercise Manager, FDEM*

2025 FOUNDATION BOARD MEMBERS



Brian Mimbs
Chair



Steven Lerner
Vice Chair



Taryn Fenske
Director



Javier Marques
Secretary



Chris Spencer
Treasurer

2ND ANNUAL FLORIDA'S TRAINING FOR EMERGENCY MANAGEMENT

 *Leading Through Excellence*

*Florida's Training For Emergency Management is proudly brought to you by the
Florida Division of Emergency Management and Florida Disaster Foundation*



**FLORIDA
DISASTER** FOUNDATION

Mission

Coordinate, collaborate and communicate with our community stakeholders for a resilient Florida.

Vision

Leading the Profession in building prepared and resilient communities.

Core Values

Integrity, Teamwork, Service Excellence, Adaptability, Collaboration

For more information about FDEM, visit FloridaDisaster.org.

STAY SOCIAL



@FLSERT



@FDEM



Florida Division of
Emergency Management