

COVID-19: summary of persons being monitored, persons tested, and cases

Data through Aug 10, 2020 verified as of Aug 11, 2020 at 08:55 AM

Data in this report are provisional and subject to change.

Monitored persons: people the Florida Department of Health was notified of for possible monitoring because they are a contact of a case, traveled from China, or were identified by the Centers for Disease Control and Prevention (CDC) as a part of an airline/ship contact investigation

Total reports	165,914
Total persons of high, medium, or unknown risk	162,243
High/medium/unknown risk still being monitored	13,748

Persons tested: includes PCR and antigen test results received by the Department of Health from the state public health laboratory (BPHL), as well as commercial and hospital laboratories

Total tested	4,055,587
Positive	542,792
Negative	3,506,483
Inconclusive	6,312
Awaiting testing	3,444

Cases: people with positive PCR or antigen test result

Total cases	542,792
Florida residents	536,981
Non-Florida residents	5,811

Type of testing	
Florida residents	536,981
Positive by BPHL/CDC	18,626
Positive by commercial/hospital lab	518,355
Non-Florida residents	5,811
Positive by BPHL/CDC	211
Positive by commercial/hospital lab	5,600

Characteristics	
Florida residents hospitalized	31,354
Florida resident deaths	8,553
Change in deaths since previous report	+276
Non-Florida resident deaths	132

Hospitalized counts include anyone who was hospitalized at some point during their illness. It does not reflect the number of people currently hospitalized.

More information on deaths identified through death certificate data is available on the National Center for Health Statistics website at www.cdc.gov/nchs/nvss/vsrr/COVID19/index.htm.

Risk factors for Florida residents	
Traveled	4,063
Contact with a known case	160,441
Traveled and contact with a known case	4,185
Neither	368,292
No travel and no contact	58,510
Travel is unknown	243,157
Contact is unknown	109,413
Contact is pending	187,458

Travel can be unknown and contact can be unknown or pending for the same case, these numbers will sum to more than the "neither" total.

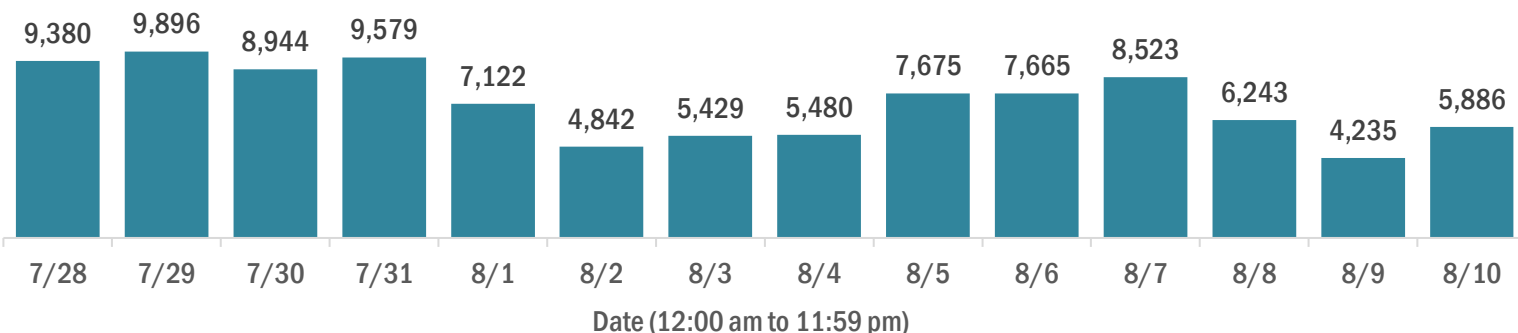
COVID-19: cases and laboratory testing over time

Data through Aug 10, 2020 verified as of Aug 11, 2020 at 08:55 AM

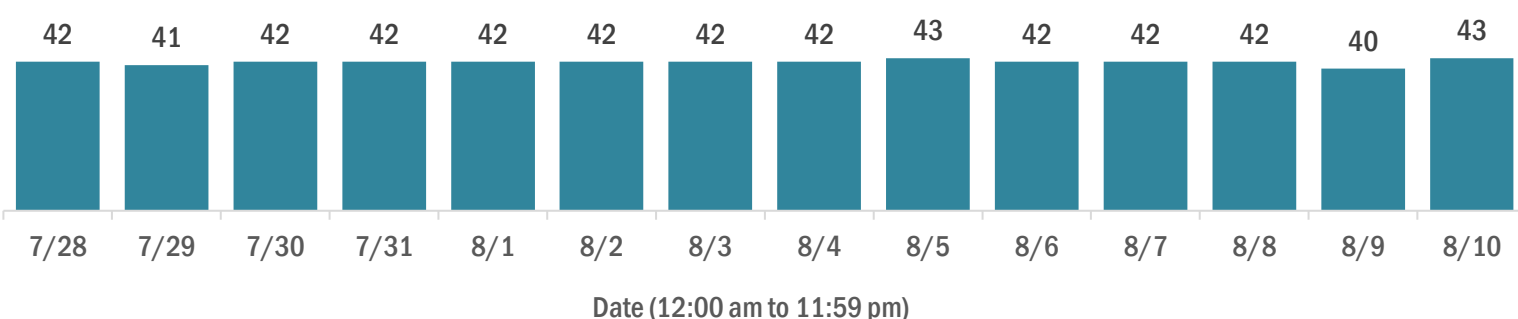
Data in this report are provisional and subject to change.

Cases in Florida residents per day for the past 2 weeks

Number of cases per day



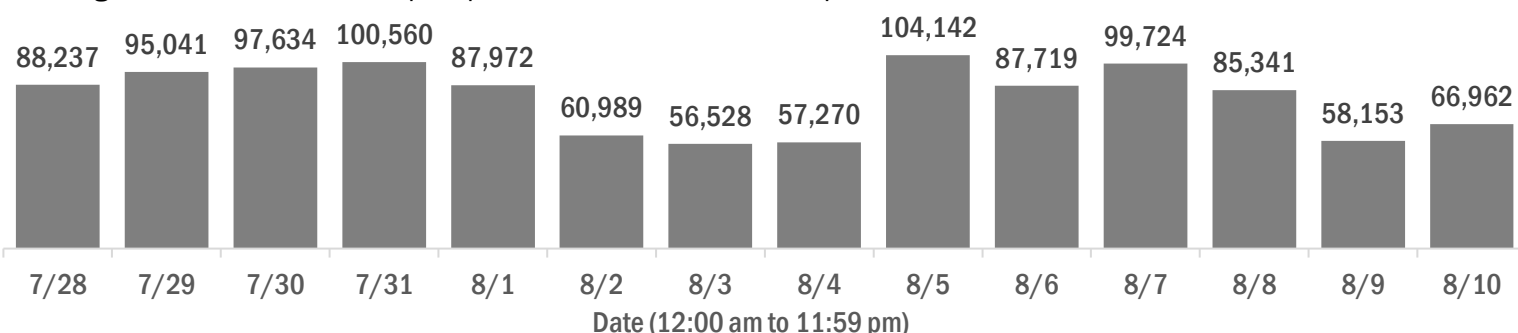
Median age of cases by day



Laboratory testing for Florida residents and non-Florida residents over the past 2 weeks

Number of people tested per day

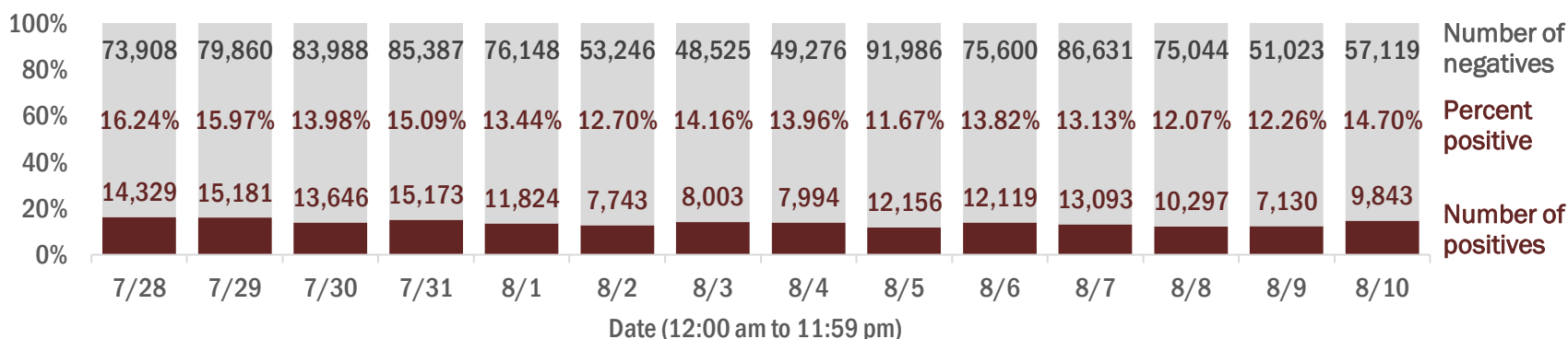
These counts include the number of people for whom the department received PCR or antigen laboratory results by day. People tested on multiple days will be included for each day a new result was received. A person is only counted once for each day they are tested, regardless of whether multiple specimens are tested or multiple results are received.



Number and percent of positive labs

The percent of positive results ranged from 11.67% to 16.24% over the past 2 weeks and was 14.70% yesterday.

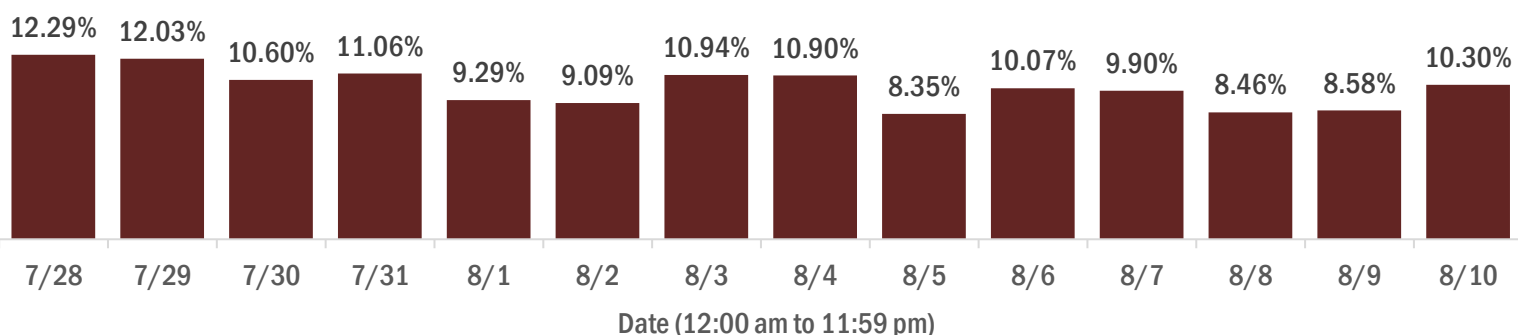
These counts include the number of people for whom the department received PCR or antigen laboratory results by day. People tested on multiple days will be included for each day a new result was received. A person is only counted once for each day they are tested, regardless of whether multiple specimens are tested or multiple results are received. If a person has a positive specimen and a negative specimen in the same day, only the positive result is counted.



Percent positivity for new cases

The percent of positive results ranged from 8.35% to 12.29% over the past 2 weeks and was 10.30% yesterday.

This percent is the number of people who test PCR- or antigen-positive for the first time divided by all the people tested that day, excluding people who have previously tested positive.



COVID-19: characteristics of 536,981 Florida resident cases

Data through Aug 10, 2020 verified as of Aug 11, 2020 at 08:55 AM

Data in this report are provisional and subject to change.

Age group	Cases	Hospitalizations	Deaths
0-4 years	9,063 2%	194 1%	0 0%
5-14 years	21,378 4%	168 1%	3 0%
15-24 years	80,891 15%	794 3%	21 0%
25-34 years	103,246 19%	1,880 6%	59 1%
35-44 years	88,638 17%	2,792 9%	180 2%
45-54 years	86,047 16%	4,071 13%	371 4%
55-64 years	69,704 13%	5,554 18%	889 10%
65-74 years	40,223 7%	6,104 19%	1,761 21%
75-84 years	22,989 4%	5,624 18%	2,460 29%
85+ years	13,359 2%	4,169 13%	2,809 33%
Unknown	1,443 0%	4 0%	0 0%
Total	536,981	31,354	8,553

Gender	Cases
Female	274,173 51%
Male	258,846 48%
Unknown	3,962 1%
Total	536,981

Ethnicity	Cases	Hospitalizations	Deaths
Hispanic	144,658 27%	9,771 31%	2,115 25%
Non-Hispanic	188,538 35%	19,494 62%	5,544 65%
Unknown	203,785 38%	2,089 7%	894 10%
Total	536,981	31,354	8,553

Race and ethnicity	Cases	Hospitalizations	Deaths
White	213,312 40%	18,724 60%	5,693 67%
Hispanic	94,756 18%	6,984 22%	1,649 19%
Non-Hispanic	99,360 19%	10,983 35%	3,669 43%
Unknown	19,196 4%	757 2%	375 4%
Black	81,559 15%	7,701 25%	1,715 20%
Hispanic	3,750 1%	324 1%	55 1%
Non-Hispanic	68,115 13%	7,126 23%	1,579 18%
Unknown	9,694 2%	251 1%	81 1%
Other race	62,658 12%	3,720 12%	700 8%
Hispanic	31,158 6%	2,205 7%	342 4%
Non-Hispanic	17,660 3%	1,283 4%	264 3%
Unknown	13,840 3%	232 1%	94 1%
Unknown race	179,452 33%	1,209 4%	445 5%
Hispanic	14,994 3%	258 1%	69 1%
Non-Hispanic	3,403 1%	102 0%	32 0%
Unknown	161,055 30%	849 3%	344 4%
Total	536,981	31,354	8,553

Hospitalization counts include anyone who was hospitalized at some point during their illness. It does not reflect the number of people currently hospitalized. **Other race** includes any person with a race of American Indian/Alaskan native, Asian, native Hawaiian/Pacific Islander, or other.

COVID-19: deaths in Florida residents and staff of long-term care facilities

Data through Aug 10, 2020 verified as of Aug 11, 2020 at 08:55 AM

Data in this report are provisional and subject to change.

For current cases in residents or staff of long-term care facilities, please visit: <https://floridahealthcovid19.gov/>

County	Deaths		County	Deaths		County	Deaths	
Dade	635	17%	Clay	32	1%	Jefferson	4	0%
Palm Beach	381	10%	Osceola	30	1%	Madison	4	0%
Pinellas	355	10%	Suwannee	30	1%	Okeechobee	4	0%
Broward	256	7%	Indian River	28	1%	Baker	3	0%
Hillsborough	194	5%	Hernando	26	1%	Gilchrist	3	0%
Lee	190	5%	Okaloosa	23	1%	Bradford	2	0%
Polk	173	5%	Hendry	19	1%	Hardee	2	0%
Manatee	113	3%	Lake	16	0%	Holmes	2	0%
Sarasota	96	3%	St. Johns	12	0%	Nassau	2	0%
Brevard	94	3%	Walton	12	0%	Desoto	1	0%
Duval	90	2%	Washington	12	0%	Flagler	1	0%
Seminole	89	2%	Alachua	11	0%	Levy	1	0%
St. Lucie	86	2%	Putnam	11	0%	Monroe	1	0%
Volusia	77	2%	Bay	10	0%	Taylor	1	0%
Escambia	71	2%	Leon	10	0%	Total	3,638	
Pasco	67	2%	Sumter	10	0%			
Collier	63	2%	Citrus	9	0%			
Martin	58	2%	Gadsden	8	0%			
Orange	58	2%	Santa Rosa	8	0%			
Charlotte	56	2%	Calhoun	6	0%			
Jackson	36	1%	Columbia	5	0%			
Marion	36	1%	Highlands	5	0%			

Note: cases are summarized by the county of usual residence. Residents and staff may be cases associated with facilities that are not in their county of usual residence, resulting in cases being included below for counties that do not have facilities with known cases.

COVID-19: characteristics of 542,792 cases

Data through Aug 10, 2020 verified as of Aug 11, 2020 at 08:55 AM

Data in this report are provisional and subject to change.

Tables below include cases in Florida residents and non-Florida residents.

All 67 Florida counties have cases:

County	FL resident cases	Non-FL resident cases	Total cases	FL resident deaths	FL death rate
Dade	134,207	923	135,130	1,909	1.4%
Broward	63,082	523	63,605	856	1.4%
Palm Beach	37,295	346	37,641	940	2.5%
Hillsborough	32,864	132	32,996	395	1.2%
Orange	31,639	403	32,042	315	1.0%
Duval	23,495	246	23,741	198	0.8%
Pinellas	17,977	126	18,103	513	2.9%
Lee	16,428	290	16,718	351	2.1%
Polk	14,595	50	14,645	326	2.2%
Collier	10,345	142	10,487	143	1.4%
Osceola	9,776	82	9,858	106	1.1%
Escambia	8,914	893	9,807	131	1.5%
Manatee	9,300	95	9,395	234	2.5%
Volusia	7,982	58	8,040	140	1.8%
Seminole	7,193	26	7,219	130	1.8%
Pasco	7,134	38	7,172	131	1.8%
Marion	6,653	15	6,668	102	1.5%
Sarasota	6,261	53	6,314	162	2.6%
Brevard	6,169	21	6,190	157	2.5%
St. Lucie	5,898	22	5,920	180	3.1%
Lake	5,199	30	5,229	68	1.3%
Leon	5,003	113	5,116	26	0.5%
Bay	4,454	69	4,523	52	1.2%
Alachua	4,189	57	4,246	26	0.6%
Santa Rosa	3,980	33	4,013	40	1.0%
Martin	3,827	25	3,852	99	2.6%
St. Johns	3,695	43	3,738	36	1.0%
Okaloosa	3,557	30	3,587	45	1.3%
Clay	3,318	9	3,327	52	1.6%
Columbia	2,904	13	2,917	16	0.6%
Indian River	2,540	15	2,555	57	2.2%
Charlotte	2,274	7	2,281	94	4.1%
Hernando	2,055	14	2,069	50	2.4%
Jackson	1,921	15	1,936	41	2.1%
Gadsden	1,920	8	1,928	21	1.1%
Hendry	1,804	1	1,805	38	2.1%
Citrus	1,590	4	1,594	37	2.3%
Monroe	1,521	27	1,548	13	0.9%
Putnam	1,538	1	1,539	27	1.8%
Suwannee	1,490	17	1,507	44	3.0%
Highlands	1,470	4	1,474	37	2.5%
Walton	1,308	120	1,428	16	1.2%
Desoto	1,374	3	1,377	18	1.3%
Sumter	1,336	8	1,344	42	3.1%
Nassau	1,175	78	1,253	11	0.9%
Flagler	1,085	10	1,095	13	1.2%
Okeechobee	1,073	4	1,077	12	1.1%
Hardee	979	7	986	7	0.7%
Taylor	978	3	981	5	0.5%
Baker	964	0	964	4	0.4%
Washington	867	10	877	14	1.6%
Wakulla	720	6	726	5	0.7%
Unknown	227	494	721	0	0.0%
Madison	698	12	710	8	1.1%
Levy	694	4	698	5	0.7%
Gulf	676	9	685	2	0.3%
Hamilton	618	5	623	4	0.6%
Dixie	562	0	562	4	0.7%
Bradford	519	0	519	4	0.8%
Holmes	498	11	509	3	0.6%
Calhoun	481	0	481	8	1.7%
Jefferson	456	6	462	5	1.1%
Union	435	0	435	5	1.1%
Franklin	431	2	433	2	0.5%
Liberty	407	0	407	7	1.7%
Glades	406	0	406	3	0.7%
Gilchrist	369	0	369	6	1.6%
Lafayette	189	0	189	2	1.1%
Total	536,981	5,811	542,792	8,553	1.6%

COVID-19: characteristics of 536,981 Florida resident cases

Data through Aug 10, 2020 verified as of Aug 11, 2020 at 08:55 AM

Data in this report are provisional and subject to change.

The table below includes the cities and counties of residence for cases in Florida residents based on the patient's ZIP Code.

Note that city is not always received as part of the initial notification and may be missing while the case is being investigated.

City and county	Cases
Miami, Dade	81,352
Orlando, Orange	24,153
Jacksonville, Duval	21,910
Tampa, Hillsborough	19,917
Hialeah, Dade	19,834
Fort Lauderdale, Broward	14,094
Hollywood, Broward	12,226
West Palm Beach, Palm Beach	9,399
Homestead, Dade	8,820
Kissimmee, Osceola	7,893
Naples, Collier	7,515
Saint Petersburg, Pinellas	7,453
Pompano Beach, Broward	7,447
Pensacola, Escambia	7,123
Fort Myers, Lee	6,774
Bradenton, Manatee	6,412
Ocala, Marion	5,288
Lake Worth, Palm Beach	5,193
Boca Raton, Palm Beach	5,096
Tallahassee, Leon	4,882
Sarasota, Sarasota	4,637
Lakeland, Polk	4,539
Miramar, Broward	4,026
Cape Coral, Lee	3,828
Clearwater, Pinellas	3,556
Port Saint Lucie, St. Lucie	3,494
Miami Gardens, Dade	3,460
Miami Beach, Dade	3,437
Gainesville, Alachua	3,395
Lehigh Acres, Lee	3,347
Boynton Beach, Palm Beach	3,330
Winter Haven, Polk	2,909
Panama City, Bay	2,894
Lake City, Columbia	2,776
Coral Springs, Broward	2,769
Delray Beach, Palm Beach	2,552
Opa Locka, Dade	2,298
Davie, Broward	2,270
Sunrise, Broward	2,236
Milton, Santa Rosa	2,229
Doral, Dade	2,193
Brandon, Hillsborough	2,164
Immokalee, Collier	2,145
Fort Pierce, St. Lucie	2,143
Riverview, Hillsborough	2,075
Plant City, Hillsborough	2,042
Apopka, Orange	2,008
Saint Augustine, St. Johns	1,955
Missing, Broward	1,933
Largo, Pinellas	1,876
Stuart, Martin	1,853
North Miami Beach, Dade	1,852
Melbourne, Brevard	1,829
Vero Beach, Indian River	1,780
Deerfield Beach, Broward	1,778
Tamarac, Broward	1,762
Daytona Beach, Volusia	1,759
Sanford, Seminole	1,741
Plantation, Broward	1,723

COVID-19: characteristics of 536,981 Florida resident cases

Data through Aug 10, 2020 verified as of Aug 11, 2020 at 08:55 AM

Data in this report are provisional and subject to change.

The table below includes the cities and counties of residence for cases in Florida residents based on the patient's ZIP Code.

Note that city is not always received as part of the initial notification and may be missing while the case is being investigated.

City and county	Cases
Jupiter, Palm Beach	1,713
New Port Richey, Pasco	1,622
Saint Cloud, Osceola	1,604
Orange Park, Clay	1,591
Deltona, Volusia	1,501
Lake Worth Beach, Palm Beach	1,446
Margate, Broward	1,415
Palmetto, Manatee	1,370
Clermont, Lake	1,365
Weston, Broward	1,329
Miami Lakes, Dade	1,323
Fort Walton Beach, Okaloosa	1,288
Palm Bay, Brevard	1,281
Deland, Volusia	1,276
North Lauderdale, Broward	1,268
Live Oak, Suwannee	1,227
Coconut Creek, Broward	1,222
Palm Beach Gardens, Palm Beach	1,217
Arcadia, Desoto	1,206
Hallandale, Broward	1,206
Altamonte Springs, Seminole	1,188
Winter Garden, Orange	1,188
Haines City, Polk	1,188
Winter Park, Orange	1,167
Davenport, Polk	1,165
Port Charlotte, Charlotte	1,131
Spring Hill, Hernando	1,120
Oviedo, Seminole	1,114
Ocoee, Orange	1,103
Coral Gables, Dade	1,098
Bonita Springs, Lee	1,089
Royal Palm Beach, Palm Beach	1,067
North Miami, Dade	1,017
Okeechobee, Okeechobee	1,016
Land O Lakes, Pasco	1,007
Palm Harbor, Pinellas	1,005
Quincy, Gadsden	1,004
Oakland Park, Broward	1,001
Wellington, Palm Beach	997
Wesley Chapel, Pasco	989
Missing, Dade	962
Pinellas Park, Pinellas	943
Clewiston, Hendry	938
Indiantown, Martin	927
Ruskin, Hillsborough	926
Perry, Taylor	897
Punta Gorda, Charlotte	886
Valrico, Hillsborough	883
Lutz, Hillsborough	881
Pembroke Pines, Broward	868
Longwood, Seminole	866
Century, Escambia	852
Belle Glade, Palm Beach	850
Seminole, Pinellas	847
Florida City, Dade	839
Missing, Palm Beach	818
Palm Coast, Flagler	802
Leesburg, Lake	787
Wimauma, Hillsborough	774

COVID-19: characteristics of 536,981 Florida resident cases

Data through Aug 10, 2020 verified as of Aug 11, 2020 at 08:55 AM

Data in this report are provisional and subject to change.

The table below includes the cities and counties of residence for cases in Florida residents based on the patient's ZIP Code.

Note that city is not always received as part of the initial notification and may be missing while the case is being investigated.

City and county	Cases
Palatka, Putnam	757
Casselberry, Seminole	736
Windermere, Orange	732
Key West, Monroe	724
Bartow, Polk	724
Ormond Beach, Volusia	717
Crestview, Okaloosa	716
Jacksonville Beach, Duval	708
Lynn Haven, Bay	708
Middleburg, Clay	708
North Port, Sarasota	704
Graceville, Jackson	697
Brooksville, Hernando	692
Chipley, Washington	692
Cocoa, Brevard	686
Cantonment, Escambia	678
Kissimmee, Polk	661
Auburndale, Polk	652
Aventura, Dade	637
Lake Mary, Seminole	637
Sebring, Highlands	635
Tavares, Lake	621
Zephyrhills, Pasco	618
Crawfordville, Wakulla	612
Dade City, Pasco	611
North Fort Myers, Lee	605
Hudson, Pasco	602
Labelle, Hendry	589
Gulf Breeze, Santa Rosa	585
Panama City Beach, Bay	582
Port Richey, Pasco	582
Loxahatchee, Palm Beach	581
Carol City, Dade	568
Lake Wales, Polk	554
Winter Springs, Seminole	550
Sanderson, Baker	548
Port Orange, Volusia	546
Tarpon Springs, Pinellas	535
Riviera Beach, Palm Beach	528
Mulberry, Polk	526
Seffner, Hillsborough	523
Venice, Sarasota	518
Maitland, Orange	518
Marianna, Jackson	509
Cooper City, Broward	499
Destin, Okaloosa	498
Orange City, Volusia	495
Saint Johns, St. Johns	494
Sarasota, Manatee	492
Holiday, Pasco	480
Navarre, Santa Rosa	478
Ponte Vedra Beach, St. Johns	475
Avon Park, Highlands	464
South Bay, Palm Beach	460
Santa Rosa Beach, Walton	458
Fernandina Beach, Nassau	456
Missing, Collier	451
Defuniak Springs, Walton	451
Merritt Island, Brevard	445

COVID-19: characteristics of 536,981 Florida resident cases

Data through Aug 10, 2020 verified as of Aug 11, 2020 at 08:55 AM

Data in this report are provisional and subject to change.

The table below includes the cities and counties of residence for cases in Florida residents based on the patient's ZIP Code.

Note that city is not always received as part of the initial notification and may be missing while the case is being investigated.

City and county	Cases
Dunedin, Pinellas	445
Eustis, Lake	441
Wauchula, Hardee	437
Dania, Broward	436
The Villages, Sumter	431
Green Cove Springs, Clay	429
Titusville, Brevard	425
Jasper, Hamilton	417
Pahokee, Palm Beach	415
Fleming Island, Clay	412
Starke, Bradford	412
Parrish, Manatee	411
Madison, Madison	410
Monticello, Jefferson	409
Dover, Hillsborough	406
Gibsonton, Hillsborough	403
Niceville, Okaloosa	395
Palm City, Martin	394
South Miami, Dade	392
Lantana, Palm Beach	390
Inverness, Citrus	389
Rockledge, Brevard	388
Wewahitchka, Gulf	386
New Smyrna Beach, Volusia	383
Havana, Gadsden	380
Odessa, Hillsborough	378
Bonifay, Holmes	377
Fellsmere, Indian River	376
Moore Haven, Glades	375
Estero, Lee	374
Groveland, Lake	372
Parkland, Broward	370
Missing, Hillsborough	365
Pinecrest, Dade	364
Key Biscayne, Dade	361
Mount Dora, Lake	354
Missing, Duval	349
Cross City, Dixie	346
Lake Butler, Union	340
Bristol, Liberty	336
Crescent City, Putnam	335
Lauderdale Lakes, Broward	334
Carrabelle, Franklin	331
Atlantic Beach, Duval	330
Blountstown, Calhoun	326
Polk City, Polk	323
Debary, Volusia	321
Oldsmar, Pinellas	315
Lauderhill, Broward	313
Pace, Santa Rosa	307
South Miami Heights, Dade	307
Hobe Sound, Martin	295
Lithia, Hillsborough	294
Palm Springs, Palm Beach	294
Sun City Center, Hillsborough	293
North Palm Beach, Palm Beach	292
Missing, Orange	292
Crossings, Dade	283
Apollo Beach, Hillsborough	283

COVID-19: characteristics of 536,981 Florida resident cases

Data through Aug 10, 2020 verified as of Aug 11, 2020 at 08:55 AM

Data in this report are provisional and subject to change.

The table below includes the cities and counties of residence for cases in Florida residents based on the patient's ZIP Code.

Note that city is not always received as part of the initial notification and may be missing while the case is being investigated.

City and county	Cases
Missing, Pasco	278
Frostproof, Polk	277
Summerfield, Marion	267
Wilton Manors, Broward	264
Alachua, Alachua	262
Missing, Santa Rosa	261
Macclenny, Baker	261
Yulee, Nassau	256
Sebastian, Indian River	250
El Portal, Dade	248
Bowling Green, Hardee	248
Missing, St. Lucie	247
Cutler Ridge, Dade	242
Fort Meade, Polk	242
Ellenton, Manatee	240
Missing, Hendry	240
Ponte Vedra, St. Johns	239
Missing, Polk	239
Bushnell, Sumter	239
Missing, St. Johns	238
Belleview, Marion	230
Everglades National Park, Dade	230
Wildwood, Sumter	228
Crystal River, Citrus	228
Williston, Levy	227
Safety Harbor, Pinellas	227
Biscayne Park, Dade	223
Sneads, Jackson	223
Trenton, Gilchrist	222
Chattahoochee, Gadsden	222
Kendall, Dade	221
Lake Placid, Highlands	218
Homosassa, Citrus	204
Key Largo, Monroe	203
Port Saint Joe, Gulf	203
Dunnellon, Marion	200
Mary Esther, Okaloosa	199
Chiefland, Levy	198
Palmetto Bay, Dade	197
Jensen Beach, Martin	194
Callahan, Nassau	193
Coconut Grove, Dade	189
Coral, Dade	187
Lady Lake, Lake	186
Missing, Citrus	184
Shalimar, Okaloosa	184
Old Town, Dixie	184
Newberry, Alachua	183
Missing, Marion	182
Mascotte, Lake	180
Missing, Hardee	178
Edgewater, Volusia	177
Missing, Volusia	175
Mayo, Lafayette	174
Missing, Madison	169
Missing, Osceola	164
Jacksonville, St. Johns	164
Thonotosassa, Hillsborough	164
Marathon, Monroe	164

COVID-19: characteristics of 536,981 Florida resident cases

Data through Aug 10, 2020 verified as of Aug 11, 2020 at 08:55 AM

Data in this report are provisional and subject to change.

The table below includes the cities and counties of residence for cases in Florida residents based on the patient's ZIP Code.

Note that city is not always received as part of the initial notification and may be missing while the case is being investigated.

City and county	Cases
Lake Alfred, Polk	162
Freeport, Walton	161
Lecanto, Citrus	160
Uleta, Dade	160
Southwest Ranches, Broward	157
Missing, Hernando	154
Missing, Brevard	153
Minneola, Lake	148
Satellite Beach, Brevard	145
Missing, Desoto	143
Pierson, Volusia	143
Missing, Seminole	142
West Melbourne, Brevard	141
Neptune Beach, Duval	138
Missing, Highlands	137
Citra, Marion	137
Spring Hill, Pasco	136
Myakka City, Manatee	136
Marco Island, Collier	136
Cocoa Beach, Brevard	135
Nokomis, Sarasota	133
Bronson, Levy	131
Sorrento, Lake	131
Midway, Gadsden	131
Clearwater Beach, Pinellas	131
Missing, Martin	129
Beverly Hills, Citrus	129
Jennings, Hamilton	128
Hilliard, Nassau	128
Lake Park, Palm Beach	127
Englewood, Charlotte	125
Medley, Dade	124
Gulfport, Pinellas	123
Missing, Monroe	122
Missing, Indian River	122
Tavernier, Monroe	120
Malone, Jackson	120
Holly Hill, Volusia	119
De Leon Springs, Volusia	119
Missing, Unknown	117
Golden Beach, Dade	117
Fort White, Columbia	116
Missing, Pinellas	116
Miramar Beach, Walton	111
Bunnell, Flagler	109
Molino, Escambia	109
Kenneth City, Pinellas	108
Bell, Gilchrist	108
Missing, Nassau	106
Palm Beach, Palm Beach	104
Jay, Santa Rosa	103
Indialantic, Brevard	103
High Springs, Alachua	103
Fruitland Park, Lake	103
Zolfo Springs, Hardee	102
Alva, Lee	100
Sweetwater, Dade	99
Umatilla, Lake	98
Missing, Lee	98

COVID-19: characteristics of 536,981 Florida resident cases

Data through Aug 10, 2020 verified as of Aug 11, 2020 at 08:55 AM

Data in this report are provisional and subject to change.

The table below includes the cities and counties of residence for cases in Florida residents based on the patient's ZIP Code.

Note that city is not always received as part of the initial notification and may be missing while the case is being investigated.

City and county	Cases
Dunnellon, Citrus	96
Englewood, Sarasota	95
Hernando, Citrus	95
Gretna, Gadsden	95
East Palatka, Putnam	92
Glen Saint Mary, Baker	92
Cottondale, Jackson	91
Flagler Beach, Flagler	89
Missing, Okaloosa	89
Tequesta, Palm Beach	88
Missing, Sarasota	87
Missing, Clay	86
Trinity, Pasco	86
Oxford, Sumter	84
Missing, Gulf	84
Missing, Jackson	83
Fisher Island, Dade	83
Keystone Heights, Clay	83
Missing, Flagler	82
Eagle Lake, Polk	81
South Daytona, Volusia	81
Gotha, Orange	80
Montverde, Lake	80
Missing, Leon	79
Silver Springs, Marion	79
Reddick, Marion	78
Chuluota, Seminole	78
Youngstown, Bay	77
Rotunda West, Charlotte	77
Cape Canaveral, Brevard	76
Archer, Alachua	76
Greenwood, Jackson	75
Weeki Wachee, Hernando	75
Coleman, Sumter	75
Missing, Lake	74
Hawthorne, Alachua	74
Branford, Suwannee	73
Osprey, Sarasota	72
Baker, Okaloosa	71
Geneva, Seminole	71
Webster, Sumter	71
Altha, Calhoun	70
White Springs, Hamilton	70
Mims, Brevard	70
Vernon, Washington	68
Lake Panasoffkee, Sumter	68
Hastings, St. Johns	68
Dundee, Polk	68
Ocklawaha, Marion	67
Avon Park, Polk	66
Fort Myers Beach, Lee	66
Interlachen, Putnam	66
Missing, Washington	66
Southport, Bay	65
Missing, Levy	64
O'Brien, Suwannee	64
Melbourne Beach, Brevard	63
Zellwood, Orange	63
Pomona Park, Putnam	63

COVID-19: characteristics of 536,981 Florida resident cases

Data through Aug 10, 2020 verified as of Aug 11, 2020 at 08:55 AM

Data in this report are provisional and subject to change.

The table below includes the cities and counties of residence for cases in Florida residents based on the patient's ZIP Code.

Note that city is not always received as part of the initial notification and may be missing while the case is being investigated.

City and county	Cases
Satsuma, Putnam	62
West Miami, Dade	62
Ave Maria, Collier	62
Missing, Wakulla	62
Missing, Baker	62
Missing, Manatee	62
Missing, Gadsden	59
Belle Isle, Orange	59
Oakland, Orange	59
Apalachicola, Franklin	59
Missing, Escambia	58
Greenville, Madison	58
South Pasadena, Pinellas	57
Indian Rocks Beach, Pinellas	56
Raiford, Union	56
Floral City, Citrus	55
Missing, Calhoun	54
Missing, Okeechobee	54
Islamorada, Monroe	54
Grand Island, Lake	53
Mcdavid, Escambia	51
San Antonio, Pasco	51
Lakewood Ranch, Manatee	51
Indian Harbour Beach, Brevard	50
Bal Harbour, Dade	49
Seville, Volusia	49
Surfside, Dade	49
Greenacres, Palm Beach	48
Missing, Sumter	48
Lawtey, Bradford	48
Missing, Walton	48
Viera, Brevard	47
Atlantis, Palm Beach	46
Fountain, Bay	46
Grand Ridge, Jackson	46
Mcalpin, Suwannee	45
Lee, Madison	45
Poinciana, Polk	44
Elkton, St. Johns	43
Missing, Holmes	43
Stock Island, Monroe	42
Alford, Jackson	42
Wellborn, Suwannee	41
Melrose, Putnam	41
Lake Hamilton, Polk	40
Morriston, Levy	39
Missing, Taylor	39
Sanibel, Lee	39
Westville, Holmes	38
Citrus Springs, Citrus	38
Astatula, Lake	37
Christmas, Orange	37
Center Hill, Sumter	37
Bay Harbor Islands, Dade	36
Ponce De Leon, Holmes	36
Celebration, Osceola	36
Babson Park, Polk	36
Anthony, Marion	35
Howey-In-The-Hills, Lake	35

COVID-19: characteristics of 536,981 Florida resident cases

Data through Aug 10, 2020 verified as of Aug 11, 2020 at 08:55 AM

Data in this report are provisional and subject to change.

The table below includes the cities and counties of residence for cases in Florida residents based on the patient's ZIP Code.

Note that city is not always received as part of the initial notification and may be missing while the case is being investigated.

City and county	Cases
Welaka, Putnam	35
Hosford, Liberty	35
Summerland Key, Monroe	35
Weirsdale, Marion	35
Micanopy, Alachua	35
Juno Beach, Palm Beach	35
Missing, Gilchrist	35
Valparaiso, Okaloosa	34
Malabar, Brevard	34
Mangonia Park, Palm Beach	33
Bryceville, Nassau	33
Inlet Beach, Walton	33
Missing, Liberty	33
Steinhatchee, Taylor	32
Princeton, Dade	32
Lauderdale By The Sea, Broward	32
Lake Helen, Volusia	32
Laurel Hill, Okaloosa	32
Bokeelia, Lee	32
Belleair, Pinellas	32
Cutler Bay, Dade	32
Missing, Bay	31
Osteen, Volusia	31
Hallandale Beach, Broward	31
Singer Island, Palm Beach	30
Florida State University, Leon	30
San Mateo, Putnam	29
Missing, Jefferson	29
Madeira Beach, Pinellas	29
Canal Point, Palm Beach	28
Greensboro, Gadsden	28
Missing, Bradford	28
Sumterville, Sumter	28
Missing, Suwannee	28
Fern Park, Seminole	28
Hypoluxo, Palm Beach	27
Lady Lake, Sumter	27
Eastpoint, Franklin	26
Caryville, Washington	26
Destin, Walton	26
Big Pine Key, Monroe	26
Naranja, Dade	25
Yalaha, Lake	25
Patrick Air Force Base, Brevard	25
Felda, Hendry	25
Missing, Charlotte	25
Unknown, Orange	25
Edgewood, Orange	24
Bradenton Beach, Manatee	24
Saint James City, Lee	24
The Villages, Lake	24
Astor, Lake	24
Eglin Air Force Base, Okaloosa	24
Holt, Okaloosa	23
Missing, Dixie	23
Haverhill, Palm Beach	23
Belleair Beach, Pinellas	23
Ochopee, Collier	23
Florida Dept Of Corrections, Union	22

COVID-19: characteristics of 536,981 Florida resident cases

Data through Aug 10, 2020 verified as of Aug 11, 2020 at 08:55 AM

Data in this report are provisional and subject to change.

The table below includes the cities and counties of residence for cases in Florida residents based on the patient's ZIP Code.

Note that city is not always received as part of the initial notification and may be missing while the case is being investigated.

City and county	Cases
Odessa, Pasco	22
Sunny Isles Beach, Dade	22
Grant-Valkaria, Brevard	21
Longboat Key, Manatee	21
Campbellton, Jackson	21
Oak Hill, Volusia	21
Jupiter, Martin	21
Sopchoppy, Wakulla	20
Clarksville, Calhoun	20
Panacea, Wakulla	20
Altoona, Lake	20
Kindred, Osceola	19
Temple Terrace, Hillsborough	19
Baldwin, Duval	19
Paisley, Lake	19
Crystal Beach, Pinellas	19
Callaway, Bay	18
Placida, Charlotte	18
Lamont, Jefferson	18
Hialeah Gardens, Dade	18
Miami Springs, Dade	18
Kissimmee, Orange	18
Fort McCoy, Marion	18
Alafaya, Orange	18
Ponce Inlet, Volusia	18
Missing, Union	17
Brooker, Bradford	17
Waldo, Alachua	17
Georgetown, Putnam	17
Fruit Cove, St. Johns	16
Waverly, Polk	16
Pinetta, Madison	16
Tice, Lee	16
Air Mail Facility, Dade	15
North Bay Village, Dade	15
Inglis, Levy	15
Ona, Hardee	14
Holmes Beach, Manatee	14
Missing, Franklin	14
Okahumpka, Lake	14
Miami Shores, Dade	14
Florahome, Putnam	14
Dinsmore, Duval	14
Carrollwood, Hillsborough	14
Matlacha, Lee	13
Tierra Verde, Pinellas	13
Lighthouse Point, Broward	13
Village Of Palmetto Bay, Dade	13
West Park, Broward	13
Hollister, Putnam	13
Walnut Hill, Escambia	13
Fort Denaud, Hendry	12
Nocatee, Desoto	12
Harmony, Osceola	12
Eaton Park, Polk	12
Bascom, Jackson	12
Terra Ceia, Manatee	12
Barefoot Bay, Brevard	12
Palm Shores, Brevard	12

COVID-19: characteristics of 536,981 Florida resident cases

Data through Aug 10, 2020 verified as of Aug 11, 2020 at 08:55 AM

Data in this report are provisional and subject to change.

The table below includes the cities and counties of residence for cases in Florida residents based on the patient's ZIP Code.

Note that city is not always received as part of the initial notification and may be missing while the case is being investigated.

City and county	Cases
Winter Park, Seminole	12
Unknown, Dade	11
Mexico Beach, Bay	11
Sebastian, Brevard	11
Saint Pete Beach, Pinellas	11
Bay Pines, Pinellas	11
Missing, Glades	11
Intercession City, Osceola	11
North Redington Beach, Pinellas	11
Santa Fe, Alachua	11
Goulds, Dade	11
Dania Beach, Broward	11
Hiawassee, Orange	10
Bayonet Point, Pasco	10
Balm, Hillsborough	10
Lake Suzy, Desoto	10
Missing, Lafayette	10
Heathrow, Seminole	10
Sun City, Hillsborough	10
Ocean Ridge, Palm Beach	10
Miami, Unknown	10
Bellview, Escambia	10
Palmdale, Glades	10
Labelle, Glades	10
Hampton, Bradford	10
Highland Beach, Palm Beach	9
Kinard, Calhoun	9
Bagdad, Santa Rosa	9
La Crosse, Alachua	9
Lorida, Highlands	9
Highland City, Polk	9
Treasure Island, Pinellas	9
Homosassa Springs, Citrus	8
Orange Lake, Marion	8
Hernando Beach, Hernando	8
Key Colony Beach, Monroe	8
Cedar Key, Levy	8
Dowling Park, Suwannee	8
Missing, Alachua	8
Tioga, Alachua	8
Pensacola Beach, Santa Rosa	8
Reunion, Osceola	8
Kathleen, Polk	8
Tyndall Air Force Base, Bay	8
Lutz, Pasco	8
Sydney, Hillsborough	7
Bradley, Polk	7
Tangerine, Orange	7
Wahneta, Polk	7
Buena Ventura Lakes, Osceola	7
Kenansville, Osceola	7
Eloise, Polk	7
Enterprise, Volusia	7
Wabasso, Indian River	7
Gonzalez, Escambia	7
Aloma, Orange	7
Missing, Putnam	6
Venus, Highlands	6
Pasadena, Pinellas	6

COVID-19: characteristics of 536,981 Florida resident cases

Data through Aug 10, 2020 verified as of Aug 11, 2020 at 08:55 AM

Data in this report are provisional and subject to change.

The table below includes the cities and counties of residence for cases in Florida residents based on the patient's ZIP Code.

Note that city is not always received as part of the initial notification and may be missing while the case is being investigated.

City and county	Cases
Goodland, Collier	6
Jacksonville, Unknown	6
Quail Heights, Dade	6
Ridge Manor, Pasco	6
Maitland, Seminole	6
Azalea Park, Orange	6
Palma Sola, Manatee	6
Paxton, Walton	6
Penney Farms, Clay	5
Murdock, Charlotte	5
Woodville, Leon	5
Long Boat Key, Manatee	5
Missing, Columbia	5
Cloud Lake, Palm Beach	5
Ebro, Washington	5
Crystal Springs, Pasco	5
Hialeah, Unknown	5
Long Key, Monroe	5
Sparr, Marion	5
Ponce De Leon, Walton	5
Ferndale, Lake	5
Lockhart, Orange	5
Lowell, Marion	5
Hallandale Beach, Broward	5
Pembroke Park, Broward	5
Shady Grove, Taylor	5
Mango, Hillsborough	5
North Venice, Sarasota	5
Altamonte Springs, Orange	5
Perrine, Dade	5
Village Of Wellington, Palm Beach	5
West Delray Beach, Palm Beach	5
Perdido Key, Escambia	5
Nichols, Polk	5
University Of Miami, Dade	5
Branford, Lafayette	5
Indian Creek Village, Dade	5
Steinhatchee, Dixie	5
Rubonia, Manatee	5
Poinciana, Osceola	5
Centerville, Leon	5
Lacoochee, Pasco	5
Indian Lake Estates, Polk	5
Maxville, Duval	4
Gulf Hammock, Levy	4
Ft Pierce, St. Lucie	4
Ybor City, Hillsborough	4
Psl, Unknown	4
Tallevast, Manatee	4
Lehigh, Lee	4
Eatonville, Orange	4
South Palm Beach, Palm Beach	4
Oneco, Manatee	4
Miami, Broward	4
Hollywood, Unknown	4
Gulf Stream, Palm Beach	4
City Of Sunrise, Broward	4
Orlando, Osceola	4
Nobleton, Hernando	4

COVID-19: characteristics of 536,981 Florida resident cases

Data through Aug 10, 2020 verified as of Aug 11, 2020 at 08:55 AM

Data in this report are provisional and subject to change.

The table below includes the cities and counties of residence for cases in Florida residents based on the patient's ZIP Code.

Note that city is not always received as part of the initial notification and may be missing while the case is being investigated.

City and county	Cases
Northdale, Hillsborough	4
Celebration, Orange	4
Durant, Hillsborough	4
Leisure City, Dade	4
Parker, Bay	4
Mayport, Duval	4
Sewalls Point, Martin	4
Hollywood, Dade	4
Buckingham, Lee	4
Boca Grande, Lee	4
Little Torch Key, Monroe	4
Micco, Brevard	4
Fort Lauderdale, Unknown	4
Saint Lucie West, St. Lucie	4
Siesta Key, Sarasota	4
Trilby, Pasco	4
Homeland, Polk	4
Cudjoe Key, Monroe	4
Davenport, Osceola	4
Bonifay, Washington	4
Lake City, Suwannee	4
Yankeetown, Levy	4
Plymouth, Orange	4
Telogia, Liberty	3
Green Acres, Palm Beach	3
Alturas, Polk	3
Fort Ogden, Desoto	3
Forest City, Orange	3
Cottondale, Washington	3
Duette, Manatee	3
East Lake, Marion	3
Bayshore Gardens, Manatee	3
Anna Maria, Manatee	3
Horseshoe Beach, Dixie	3
Port Salerno, Martin	3
Missing, Hamilton	3
University Park, Manatee	3
Unknown, Broward	3
Orlando, Unknown	3
Captiva, Lee	3
Belleair Bluffs, Pinellas	3
Lynbrook, Broward	3
Lake Monroe, Seminole	3
Laud-By-The-Sea, Broward	3
Indian Shores, Pinellas	3
Lake Como, Putnam	3
Candler, Marion	3
Cortez, Manatee	3
Graceville, Holmes	3
Pine Hills, Orange	3
Lauderhill, Unknown	3
Port Saint John, Brevard	3
Saint Leo, Pasco	3
Sand Lake, Orange	3
West Palm Beach, Unknown	3
Braden River, Manatee	3
Fpo, Duval	3
Fanning Springs, Gilchrist	3
Elfers, Pasco	3

COVID-19: characteristics of 536,981 Florida resident cases

Data through Aug 10, 2020 verified as of Aug 11, 2020 at 08:55 AM

Data in this report are provisional and subject to change.

The table below includes the cities and counties of residence for cases in Florida residents based on the patient's ZIP Code.

Note that city is not always received as part of the initial notification and may be missing while the case is being investigated.

City and county	Cases
Indian River Shores, Indian River	3
International Service Center, Dade	3
Miromar Lakes, Lee	3
Mayport Naval Housing, Duval	3
Vernon, Bay	3
Virginia Gardens, Dade	3
Mount Plymouth, Lake	3
Westchase, Hillsborough	3
Lakeshore, Polk	3
Miami Gardens, Unknown	3
Pompano Beach, Unknown	3
Saint Marks, Wakulla	3
Pine Castle, Orange	3
Lulu, Columbia	3
Ozona, Pinellas	3
White Springs, Columbia	2
Venice, Manatee	2
Unknown, Seminole	2
Unknown, Volusia	2
Sugarloaf, Monroe	2
Glenwood, Volusia	2
Gulf Breeze, Escambia	2
Cypress, Jackson	2
Clarcona, Orange	2
Deerfield Beach, Unknown	2
Miccosukee, Leon	2
Milligan, Okaloosa	2
Lamont, Taylor	2
Sorrento, Orange	2
San Carlos Park, Lee	2
Shady Hills, Pasco	2
Miramar, Dade	2
Mesa, Unknown	2
Longboat Key, Sarasota	2
Ormond Beach, Flagler	2
Morrison, Marion	2
Earleton, Alachua	2
Clewiston, Palm Beach	2
Bayou George, Bay	2
New Smyrna, Volusia	2
Oakland Park, Unknown	2
Palma Ceia, Hillsborough	2
Wakulla Springs, Wakulla	2
Union Park, Orange	2
Samoset, Manatee	2
Holder, Citrus	2
Graham, Bradford	2
Roseland, Indian River	2
Point Washington, Walton	2
Lake Butler, Bradford	2
Miami, Martin	2
Jonesville, Alachua	2
Mcintosh, Marion	2
El Jobean, Charlotte	2
Basinger, Okeechobee	2
Dade City, Hernando	2
Fort Lauderdale, Dade	2
Sunny Hills, Washington	2
Switzerland, St. Johns	2

COVID-19: characteristics of 536,981 Florida resident cases

Data through Aug 10, 2020 verified as of Aug 11, 2020 at 08:55 AM

Data in this report are provisional and subject to change.

The table below includes the cities and counties of residence for cases in Florida residents based on the patient's ZIP Code.

Note that city is not always received as part of the initial notification and may be missing while the case is being investigated.

City and county	Cases
Tampa, Pinellas	2
Unknown, Palm Beach	2
Watersound, Walton	2
Manalapan, Palm Beach	2
Laurel, Sarasota	2
Oklawaha, Marion	2
Grandin, Putnam	2
Inlet Beach, Bay	2
Jacksonville, Clay	2
White City, Gulf	2
Jensen Beach, St. Lucie	2
Loxahatchee Groves, Palm Beach	2
Apopka, Seminole	2
Archer, Levy	2
Hallandale Beach, Unknown	2
Hawthorne, Putnam	2
Fairfield, Marion	2
Ponte Vedra, Duval	2
Port Charlotte, Unknown	2
River Ranch, Polk	2
Ramrod Key, Monroe	2
Palm Beach Shores, Palm Beach	2
Port Saint Lucie, Martin	2
The Villages, Marion	2
Trenton, Levy	2
Valkaria, Brevard	2
West Bradenton, Manatee	2
Margate, Unknown	2
Madison, Unknown	2
Redington Beach, Pinellas	2
Redington Shores, Pinellas	2
Town N Country, Hillsborough	2
Lealman, Pinellas	2
Gibsonia, Polk	2
Everglades City, Collier	2
Fort Charlotte, Charlotte	2
Destin, Unknown	2
Daytona Beach Shores, Volusia	2
Champions Gate, Polk	2
Chokoloskee, Collier	2
Goldenrod, Seminole	2
Lake Harbor, Palm Beach	2
Loughman, Polk	2
Westlake, Palm Beach	2
Scottsmoor, Brevard	2
Orlando, Brevard	2
Rosemary Beach, Bay	1
Saint Cloud, Orange	1
Saint Petersburg, Dade	1
San Pedro Sula, Dade	1
Port Charlotte Fl, Unknown	1
Palm Bay, Dade	1
Palm Coast, Orange	1
Opa Locka, Unknown	1
Orange, Orange	1
Seminole, Orange	1
Wimauma, Manatee	1
Turmero, Dade	1
Tampa, Dade	1

COVID-19: characteristics of 536,981 Florida resident cases

Data through Aug 10, 2020 verified as of Aug 11, 2020 at 08:55 AM

Data in this report are provisional and subject to change.

The table below includes the cities and counties of residence for cases in Florida residents based on the patient's ZIP Code.

Note that city is not always received as part of the initial notification and may be missing while the case is being investigated.

City and county	Cases
Miami Granders, Dade	1
Los Angeles, Polk	1
Lanark Village, Franklin	1
Grand Island, Unknown	1
Hialean, Unknown	1
Holt, Unknown	1
Bostwick, Putnam	1
Brewton, Escambia	1
Coselberry, Orange	1
Crestview, Dade	1
Darien, Pasco	1
999999, Okaloosa	1
Bartow, Unknown	1
Caryville, Holmes	1
Cassadaga, Volusia	1
Fort Myers, Seminole	1
Fwb, Unknown	1
Gastonia, Polk	1
Deltona , Volusia	1
Eustic, Unknown	1
Everett, Dade	1
Apopka, Unknown	1
Alligator Point, Wakulla	1
Amelia City, Nassau	1
Bonita Springs, Collier	1
Ft Pierce, Unknown	1
Garland, Orange	1
Hallandate Ben, Unknown	1
Greenacres, Unknown	1
Live Oak, Columbia	1
Hurlburt Field, Okaloosa	1
Homeless, Dade	1
Tampa, Orange	1
University Of Central Fl, Orange	1
Unknown Out Of Area, Duval	1
Valrico, Orange	1
Wewahitchka, Calhoun	1
Winterpark, Unknown	1
South Fort Myers, Lee	1
Longwood, Orange	1
Miamt, Dade	1
Mid Florida, Seminole	1
Orlando, Orange	1
Palm City, Unknown	1
Ocala, Unknown	1
Ocean Breeze, Martin	1
N/A, Duval	1
Nokomis, Palm Beach	1
West Villages, Sarasota	1
Washington, Unknown	1
Wintergarden, Orange	1
Tallahassee, Unknown	1
Unkown, Seminole	1
South Miami, Unknown	1
Seven Springs, Pasco	1
Saint Augusaintine Beach, St. Johns	1
Port Everglades, Broward	1
Newark, Broward	1
Niceville, Walton	1

COVID-19: characteristics of 536,981 Florida resident cases

Data through Aug 10, 2020 verified as of Aug 11, 2020 at 08:55 AM

Data in this report are provisional and subject to change.

The table below includes the cities and counties of residence for cases in Florida residents based on the patient's ZIP Code.

Note that city is not always received as part of the initial notification and may be missing while the case is being investigated.

City and county	Cases
Mount Pleasant, Gadsden	1
Davenport, Orange	1
Boca Raton, Orange	1
Brooksville, Pasco	1
Middlesburg, Duval	1
Miami, Palm Beach	1
Jupiter, Duval	1
Lake Geneva, Clay	1
Immokalee, Lee	1
Hispanic, St. Lucie	1
Kissimmee, Brevard	1
Fort Pierce, Martin	1
Fl, Dade	1
Florence Villa, Polk	1
Estero, Collier	1
Fellsmee, Brevard	1
Doctors Inlet, Clay	1
Dade City, Hillsborough	1
Clermont, Orange	1
Clermont, Polk	1
Celeste, Broward	1
Bay Lake, Orange	1
Beverly Beach, Flagler	1
99, Unknown	1
Aollywoss, Dade	1
Olustee, Baker	1
Opalocka, Dade	1
Orlando, Seminole	1
Ocala, Alachua	1
Okeechobee, St. Lucie	1
Miamf, Dade	1
Unknown, Columbia	1
Wesley Chapel, Alachua	1
Weston, Dade	1
South Daytona Beach, Volusia	1
Tarpon Springs, Pasco	1
Tewksbury, Orange	1
Tampa Palms, Hillsborough	1
Pine Ridge, Citrus	1
San Antonio, Unknown	1
Franklin, Orange	1
Clearwater, Hillsborough	1
Apo, Collier	1
Big Torch Key, Monroe	1
Bonifay, Unknown	1
Arcadia, Unknown	1
Astor, Volusia	1
Austin, Dade	1
Miramar, Unknown	1
Litchfield Park, Unknown	1
Marathon Shores, Monroe	1
Mayport Naval Station, Duval	1
Lake Worth, Unknown	1
Laurel Hill, Walton	1
Haines City, Orange	1
Jena, Taylor	1
Pensacola Naval Hospital, Escambia	1
Port St Luice, Unknown	1
Rices Landing, Dade	1

COVID-19: characteristics of 536,981 Florida resident cases

Data through Aug 10, 2020 verified as of Aug 11, 2020 at 08:55 AM

Data in this report are provisional and subject to change.

The table below includes the cities and counties of residence for cases in Florida residents based on the patient's ZIP Code.

Note that city is not always received as part of the initial notification and may be missing while the case is being investigated.

City and county	Cases
Seacrest, Bay	1
Stiamk, Dade	1
Sugarloaf Key, Monroe	1
Mount Dora, Orange	1
New Church, Palm Beach	1
New Port Richey, Hillsborough	1
Okeechobee, Highlands	1
Okeechobee, Unknown	1
Orange Park, Duval	1
Weston, Unknown	1
Williston, Marion	1
West Hollywood, Broward	1
Unknown Out Of Area, Palm Beach	1
Unknown, Duval	1
Winter Springs, Orange	1
Fwb, Escambia	1
Evinston, Alachua	1
Fellsmere, Brevard	1
Fernandina, Nassau	1
Cypress Gardens, Polk	1
Indian Rock Beach, Pinellas	1
Hillsboro Beach, Broward	1
Greenville, Taylor	1
Lauderdale Lakes, Unknown	1
Jupiter Inlet, Palm Beach	1
Miamksaohes, Dade	1
Metter, Manatee	1
Mexico Beach, Gulf	1
Miami Dade, Unknown	1
Salem, Taylor	1
St Cloud, Orange	1
Sarasota, Unknown	1
Seacrest, Walton	1
Twentynine Palms, Broward	1
Sunrise, Unknown	1
Suwannee, Dixie	1
Syracuse, Unknown	1
Unknown, Manatee	1
Windermere, Unknown	1
Orange Springs, Marion	1
Orlando, Manatee	1
Pooler, Broward	1
Pennsacola, Escambia	1
Pensacola, Dade	1
Okeechobee, Martin	1
Okeechobi, Unknown	1
North Lauderdale, Unknown	1
North Miami, Palm Beach	1
North Port, Manatee	1
Xifamk, Dade	1
Babcock Ranch, Charlotte	1
Alva, Escambia	1
Branford, Gilchrist	1
Champions Gate, Osceola	1
Brentwood, Citrus	1
Cape Haze, Charlotte	1
Davie, Unknown	1
Duck Key, Monroe	1
Hialeahgardens, Dade	1

COVID-19: characteristics of 536,981 Florida resident cases

Data through Aug 10, 2020 verified as of Aug 11, 2020 at 08:55 AM

Data in this report are provisional and subject to change.

The table below includes the cities and counties of residence for cases in Florida residents based on the patient's ZIP Code.

Note that city is not always received as part of the initial notification and may be missing while the case is being investigated.

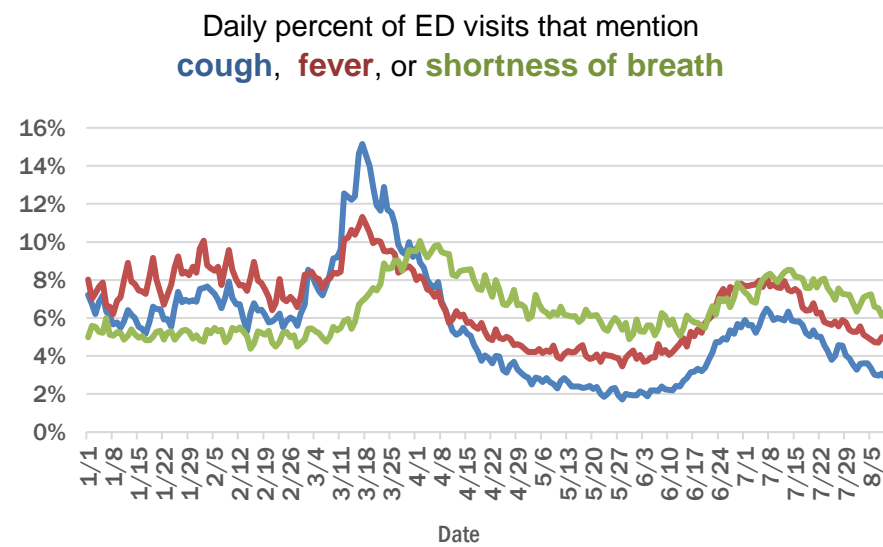
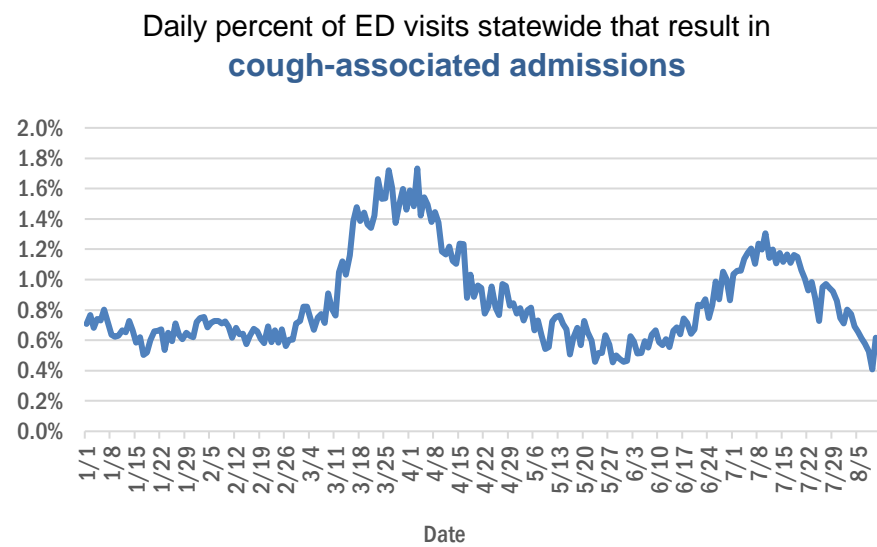
City and county	Cases
Jacksonville, Nassau	1
Homossa, Orange	1
Hosford, Calhoun	1
Interlachen, Duval	1
Jacksonville Naval Air Station, Duval	1
Jacksonville Naval Hospital, Duval	1
Mount Dora, Seminole	1
North Fort Myers, Charlotte	1
North Laud, Unknown	1
Monroe, Hillsborough	1
Oldsrav, Manatee	1
Lucedale, St. Lucie	1
Sharpes, Brevard	1
Sanford, Orange	1
Suntise, Dade	1
Unable To Obtain, Palm Beach	1
University Of Tampa, Hillsborough	1
Unk, Alachua	1
Punta Gorda, Unknown	1
Rivera Beach, Palm Beach	1
Panama City, Unknown	1
Perth Amboy, Hillsborough	1
Uknown, Unknown	1
Watersound, Bay	1
Wtixrat, Dade	1
Yeehaw, Okeechobee	1
Lakeland, Unknown	1
Jacksonville, Orange	1
Homeless, Hillsborough	1
Homeless, Monroe	1
Homeless, Pinellas	1
Hutchinson Island, St. Lucie	1
Miamc, Dade	1
Layton, Monroe	1
Lehigh Acers, Lee	1
Los Angeles, Dade	1
Deerfield, Broward	1
Coconut Ck, Unknown	1
Apollo Beach, Manatee	1
32428, Washington	1
Alpharetta, Broward	1
Hallandale, Unknown	1
Hoclywsod, Dade	1
Tamarac, Dade	1
Westville, Walton	1
Other, Dade	1
Orl, Osceola	1
Northport, Sarasota	1
New Port Richey, Unknown	1
Port Saint Lucie, Palm Beach	1
Rocky Point, Hillsborough	1
Rosemary Beach, Walton	1
Saint Johns, Duval	1
Salt Springs, Marion	1
Pass-A-Grille Beach, Pinellas	1
Pensacola Beach, Escambia	1
Pensacola, Unknown	1
Total	536,981

COVID-19: additional surveillance information

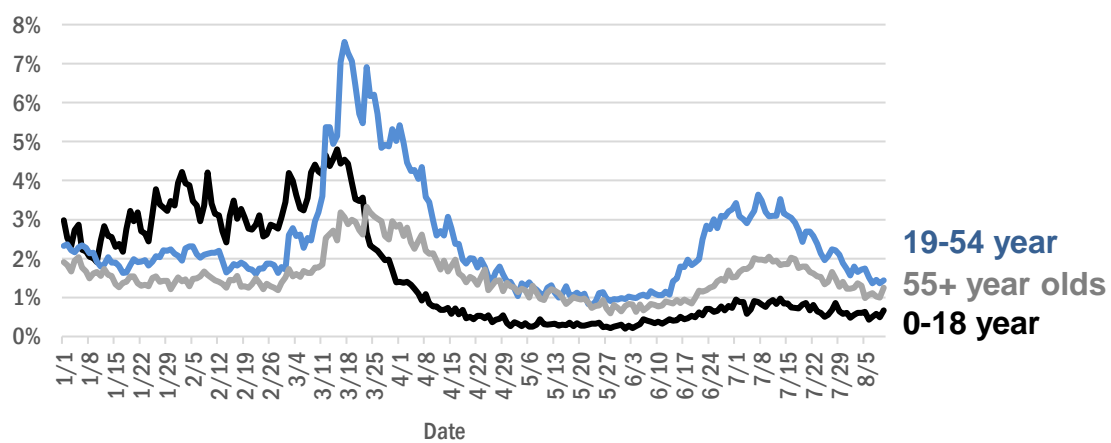
Data through Aug 10, 2020 verified as of Aug 11, 2020 at 08:55 AM

Data in this report are provisional and subject to change.

Statewide emergency department (ED) chief complaint and admission data



Daily percent of ED visits statewide that mention cough by age group



The Electronic Surveillance System for the Early Notification of Community-Based Epidemics (ESSENCE-FL) includes chief complaint data from 211 of 212 Florida EDs. Data are transmitted electronically to ESSENCE-FL daily or hourly.

COVID-19: All persons with tests reported

Data through Aug 10, 2020 verified as of Aug 11, 2020 at 08:55 AM

Data in this report are provisional and subject to change.

The table below includes persons with laboratory results that the Department of Health has received electronically or by mail/fax for Florida residents and non-Florida residents.

County	Awaiting testing	Inconclusive	Negative	Positive	Percent positive	Total tested
Dade	298	1,743	559,158	135,130	19%	696,031
Broward	185	778	378,354	63,605	14%	442,737
Palm Beach	270	589	246,218	37,641	13%	284,448
Orange	447	289	242,780	32,042	12%	275,111
Hillsborough	193	480	213,621	32,996	13%	247,097
Duval	186	221	189,155	23,741	11%	213,117
Pinellas	14	143	156,561	18,103	10%	174,807
Lee	31	53	98,273	16,718	15%	115,044
Polk	62	101	84,127	14,645	15%	98,873
Manatee	11	60	76,573	9,395	11%	86,028
Brevard	15	56	78,425	6,190	7%	84,671
Volusia	64	109	66,732	8,040	11%	74,881
Sarasota	23	49	68,245	6,314	8%	74,608
Escambia	9	54	63,074	9,807	13%	72,935
Alachua	4	24	67,905	4,246	6%	72,175
Seminole	59	66	61,772	7,219	10%	69,057
Pasco	109	49	61,321	7,172	10%	68,542
Lake	86	89	60,538	5,229	8%	65,856
Osceola	118	126	54,818	9,858	15%	64,802
Collier	197	73	52,905	10,487	17%	63,465
Leon	21	117	55,839	5,116	8%	61,072
Marion	235	107	46,449	6,668	13%	53,224
St. Lucie	276	52	37,721	5,920	14%	43,693
St. Johns	46	31	37,758	3,738	9%	41,527
Clay	13	20	31,778	3,327	9%	35,125
Okaloosa	41	45	26,202	3,587	12%	29,834
Santa Rosa	21	37	24,893	4,013	14%	28,943
Indian River	54	12	24,856	2,555	9%	27,423
Bay	10	58	22,653	4,523	17%	27,234
Charlotte	11	33	24,187	2,281	9%	26,501
Martin	49	38	21,997	3,852	15%	25,887
Hernando	3	12	17,242	2,069	11%	19,323
Citrus	37	11	17,138	1,594	9%	18,743
Sumter	22	14	16,703	1,344	7%	18,061
Highlands	8	11	14,727	1,474	9%	16,212
Flagler	6	19	14,148	1,095	7%	15,262
Nassau	31	18	13,874	1,253	8%	15,145
Monroe	69	12	12,319	1,548	11%	13,879
Columbia	3	56	10,758	2,917	21%	13,731
Gadsden	7	41	11,175	1,928	15%	13,144
Putnam	2	14	11,582	1,539	12%	13,135
Jackson	5	14	10,001	1,936	16%	11,951
Walton	1	37	8,431	1,428	14%	9,896
Desoto	5	7	8,265	1,377	14%	9,649
Hendry		17	6,631	1,805	21%	8,453
Suwannee	1	29	6,608	1,507	19%	8,144
Wakulla	3	34	7,199	726	9%	7,959
Union		19	7,311	435	6%	7,765

COVID-19: All persons with tests reported

Data through Aug 10, 2020 verified as of Aug 11, 2020 at 08:55 AM

Data in this report are provisional and subject to change.

The table below includes persons with laboratory results that the Department of Health has received electronically or by mail/fax for Florida residents and non-Florida residents.

County	Awaiting testing	Inconclusive	Negative	Positive	Percent positive	Total tested
Okeechobee	2	14	5,599	1,077	16%	6,690
Levy	2	10	5,615	698	11%	6,323
Washington	14	21	5,380	877	14%	6,278
Hardee		15	5,200	986	16%	6,201
Unknown	3	33	5,425	721	12%	6,179
Baker	32	18	4,779	964	17%	5,761
Taylor	6	27	4,255	981	19%	5,263
Madison	1	10	4,399	710	14%	5,119
Gulf	4	4	4,248	685	14%	4,937
Hamilton	1	2	4,028	623	13%	4,653
Bradford	1	21	4,032	519	11%	4,572
Holmes	4	7	3,780	509	12%	4,296
Dixie	2	13	3,585	562	14%	4,160
Calhoun	1	16	3,590	481	12%	4,087
Franklin	2	6	3,486	433	11%	3,925
Gilchrist	4	7	3,318	369	10%	3,694
Liberty			2,691	407	13%	3,098
Jefferson	2	15	2,551	462	15%	3,028
Glades		2	727	406	36%	1,135
Lafayette	2	4	795	189	19%	988
Total	3,444	6,312	3,506,483	542,792	13%	4,055,587

COVID-19: testing by laboratory

Data through Aug 10, 2020 verified as of Aug 11, 2020 at 08:55 AM

Data in this report are provisional and subject to change.

The numbers in the table below represent the number for whom test results were received by the Department of Health. A person can be tested by more than one laboratory and can have both positive and negative results. **Therefore, the sum of the numbers in each column will be larger than the total number of people tested.**

Reporting lab	Inconclusive	Negative	Positive	Percent positive	Total
QUEST DIAGNOSTICS - TAMPA	5,630	679,011	99,027	13%	783,668
LABORATORY CORPORATION OF AMERICA	1,106	681,244	99,030	13%	781,380
BIO REFERENCE LABORATORIES, INC	5,277	456,698	90,695	16%	552,670
GENETWORX	662	386,670	32,600	8%	419,932
REALTOX LABS LLC	2,403	206,584	37,000	15%	245,987
CURATIVE_LABS	3,104	203,522	20,859	9%	227,485
NORTHWEST LABORATORY	217	115,690	5,949	5%	121,856
ADVENT HEALTH LAB	112	101,285	14,054	12%	115,451
MEDICAL DIAGNOSTIC LABORATORIES	772	80,313	11,410	12%	92,495
KORVALABS, INC	966	84,064	4,068	5%	89,098
ELABNETWORK	542	70,914	6,580	8%	78,036
BIOCOLLECTIONS WORLDWIDE, INC	310	57,444	9,377	14%	67,131
MAYO CLINIC LABORATORIES	129	60,099	6,358	10%	66,586
MAKO GENOMICS	2,774	49,261	9,642	16%	61,677
MEMORIAL REGIONAL HOSPITAL SOUTH	18	47,670	12,407	21%	60,095
QUEST DIAGNOSTICS NICHOLS INSTITUTE, INC.	208	50,932	6,764	12%	57,904
BAYCARE LABORATORIES LLC	293	50,578	5,317	9%	56,188
BPHL-JACKSONVILLE	13	42,739	7,903	16%	50,655
SACRED HEART HOSPITAL LABORATORY	2	43,327	5,444	11%	48,773
ORLANDO REG MED CENTER CLINICAL LAB	445	41,922	5,504	11%	47,871
DIATHERIX LABORATORIES		38,400	5,506	13%	43,906
TAMPA GENERAL HOSPITAL	4	38,110	3,015	7%	41,129
TESTING MATTERS INC		35,399	4,958	12%	40,357
UF PATHLABS	33	38,048	1,638	4%	39,719
BPHL-MIAMI	209	29,654	6,946	19%	36,809
ARUP LABORATORIES		32,328	2,337	7%	34,665
VIRACOR-EUROFINS LABORATORIES		26,266	8,362	24%	34,628
JACKSON MEMORIAL HOSPITAL CLINICAL LAB	79	26,762	6,586	20%	33,427
BPHL-TAMPA (SPECTRUM BLVD)	45	24,213	4,072	14%	28,330
AIT LABORATORIES		23,139	2,735	11%	25,874
SHANDS AT THE UNIVERSITY OF FLORIDA	146	24,312	1,376	5%	25,834
Florida_Hospital	29	19,407	3,231	14%	22,667
LAKELAND REGIONAL MEDICAL CENTER	67	20,139	2,405	11%	22,611
ST VINCENT'S MEDICAL CENTER - RIVERSIDE	1	19,645	2,406	11%	22,052
SUNPATH MEDICAL DIAGNOSTICS LABORATORY	100	16,840	3,065	15%	20,005
WALGREENS	9	15,710	2,575	14%	18,294
CAPE CORAL HOSPITAL CLINICAL LABORATORY		14,129	2,813	17%	16,942
BROWARD GENERAL MEDICAL CENTER-CLINICAL LAB	2	13,879	1,951	12%	15,832
SHANDS JACKSONVILLE MEDICAL CENTER INC	31	12,472	1,168	9%	13,671
BAPTIST MEDICAL CENTER JACKSONVILLE	1	12,744	878	6%	13,623
BAPTIST HOSPITAL OF MIAMI CLINICAL LABORATORY	15	11,109	2,495	18%	13,619
STATLAB_MOBILE	1	12,216	1,104	8%	13,321
CLEVELAND CLINIC HOSPITAL LAB	4	11,132	1,146	9%	12,282
FLORIDA HOSPITAL - TAMPA	5	10,954	1,128	9%	12,087
ADVENTHEALTH DAYTONA BEACH	20	10,993	928	8%	11,941
NAPLES COMMUNITY HOSPITAL	24	10,240	1,224	11%	11,488
SARASOTA MEMORIAL HOSPITAL MAIN LAB	12	10,099	948	9%	11,059

COVID-19: testing by laboratory

Data through Aug 10, 2020 verified as of Aug 11, 2020 at 08:55 AM

Data in this report are provisional and subject to change.

The numbers in the table below represent the number for whom test results were received by the Department of Health. A person can be tested by more than one laboratory and can have both positive and negative results. **Therefore, the sum of the numbers in each column will be larger than the total number of people tested.**

Reporting lab	Inconclusive	Negative	Positive	Percent positive	Total
ST JOSEPHS HOSPITAL LABORATORY	9	9,612	1,345	12%	10,966
APPLIED INGENUITY DIAGNOSTICS LLC		10,186	679	6%	10,865
PALMETTO GENERAL HOSPITAL LAB	3	8,177	2,631	24%	10,811
MOUNT SINAI MEDICAL CENTER	6	8,821	1,107	11%	9,934
MILLENNIUM PHYSICIAN GROUP		7,889	1,620	17%	9,509
INTEGRATED REGIONAL LABORATORIES LLP		7,779	1,475	16%	9,254
UNIVERSITY OF MIAMI HOSPITAL	9	7,477	1,583	17%	9,069
NORTH FLORIDA REGIONAL MEDICAL CENTER		8,081	861	10%	8,942
NICKLAUS CHILDREN'S HOSPITAL	26	7,093	1,763	20%	8,882
JFK MEDICAL CENTER LAB	1	7,334	1,454	17%	8,789
SAINT MARY'S MEDICAL CENTER	10	7,314	1,212	14%	8,536
ECCO LAB GROUP CO	271	6,243	1,977	23%	8,491
MORTON PLANT HOSPITAL-ADLER INSTITUTE	7	7,833	649	8%	8,489
QUEST NEW ENGLAND	35	7,443	991	12%	8,469
TALLAHASSEE MEMORIAL HOSPITAL	23	7,513	722	9%	8,258
BRANDON REGIONAL HOSPITAL		6,910	1,319	16%	8,229
LABCORP BURLINGTON (LPP)	3	7,795	356	4%	8,154
JUPITER MEDICAL CENTER LAB	38	7,042	1,015	13%	8,095
SOUTH MIAMI HOSPITAL LAB	10	6,908	1,091	14%	8,009
WELLINGTON REGIONAL MED CTR LAB	3	6,228	1,056	14%	7,287
FLORIDA HOSPITAL WATERMAN LABORATORY	15	6,635	540	8%	7,190
INDIAN RIVER MEDICAL CENTER LAB		6,637	438	6%	7,075
REAL DIAGNOSTICS	77	6,449	465	7%	6,991
MEMORIAL REGIONAL HOSPITAL CLINICAL LABORATORY	8	6,365	502	7%	6,875
PANCARE OF FLORIDA INC		6,305	417	6%	6,722
LARKIN COMMUNITY HOSPITAL	10	5,497	1,044	16%	6,551
AKESOGEN		5,565	893	14%	6,458
AEGIS SCIENCES CORPORATION	27	5,599	483	8%	6,109
HOMESTEAD HOSPITAL CLINICAL LABORATORY	9	4,591	1,363	23%	5,963
BAPTIST HOSPITAL OF MIAMI MOLECULAR DIAGNOSTICS	54	5,124	784	13%	5,962
DELRAY MEDICAL CENTER	2	5,232	689	12%	5,923
MEMORIAL HOSPITAL JACKSONVILLE	8	4,512	1,208	21%	5,728
ARNOLD PALMER MEDICAL CENTER CLINICAL LAB		5,527	175	3%	5,702
ST ANTHONY'S HOSPITAL LAB	10	4,996	686	12%	5,692
LEESBURG REGIONAL MEDICAL CENTER		4,968	616	11%	5,584
OSCEOLA REGIONAL MEDICAL CENTER	1	4,575	939	17%	5,515
WINTER HAVEN HOSPITAL CLINICAL LABORATORY	1	4,592	897	16%	5,490
WEST KENDALL BAPTIST HOSPITAL LABORATORY	3	4,298	1,171	21%	5,472
ST JOSEPHS HOSPITAL	7	4,380	672	13%	5,059
MARTIN HOSPITAL SOUTH LAB		4,745	268	5%	5,013
GOOD SAMARITAN MEDICAL CENTER LAB	1	4,135	850	17%	4,986
MEASE COUNTRYSIDE LAB	1	4,406	486	10%	4,893
LAWNWOOD REGIONAL MEDICAL CENTER	1	4,068	821	17%	4,890
ORANGE PARK MEDICAL CENTER	8	3,762	1,023	21%	4,793

COVID-19: testing by laboratory

Data through Aug 10, 2020 verified as of Aug 11, 2020 at 08:55 AM

Data in this report are provisional and subject to change.

The numbers in the table below represent the number for whom test results were received by the Department of Health. A person can be tested by more than one laboratory and can have both positive and negative results. **Therefore, the sum of the numbers in each column will be larger than the total number of people tested.**

Reporting lab	Inconclusive	Negative	Positive	Percent positive	Total
BAPTIST MEDICAL CENTER SOUTH		4,410	359	8%	4,769
LARKIN COMMUNITY HOSPITAL INC DBA CARDIOTROPIC		1,664	2,868	63%	4,532
QUEST DIAGNOSTICS NICHOLS INSTITUTE - SJC (ELR)	19	3,788	612	14%	4,419
QUEST DIAGNOSTICS INFECTIOUS DISEASE INC	13	3,280	1,089	25%	4,382
HALIFAX MEDICAL CENTER LAB	16	3,728	621	14%	4,365
GULF COAST MEDICAL CENTER MICROLAB		3,173	1,182	27%	4,355
QUEST DIAGNOSTICS - WEST HILLS	16	4,103	181	4%	4,300
FLORIDA HOSPITAL HEARTLAND MED CTR CLINICAL LAB	1	3,793	427	10%	4,221
WESTSIDE REGIONAL MED CTR	2	3,344	854	20%	4,200
WEST FLORIDA HOSPITAL LAB		3,266	934	22%	4,200
BAPTIST HOSPITAL LABORATORY	4	3,511	683	16%	4,198
BETHESDA HOSPITAL EAST		3,626	509	12%	4,135
WEST BOCA MEDICAL CENTER LAB		3,643	456	11%	4,099
RUTGERS CLINICAL GENOMICS LABORATORY	8	3,891	181	4%	4,080
MANATEE MEMORIAL HOSPITAL		3,624	443	11%	4,067
FLORIDA HOSPITAL WESLEY CHAPEL	1	3,635	353	9%	3,989
CORAL GABLES HOSPITAL CLINICAL LABORATORY		3,003	981	25%	3,984
AVENTURA HOSPITAL LAB		2,837	1,025	27%	3,862
MERCY HOSPITAL A CAMPUS OF PLANTATION GEN HOSP LAB	1	2,794	1,051	27%	3,846
NCH NORTH NAPLES HOSPITAL LAB	2	3,302	512	13%	3,816
MEMORIAL HOSPITAL WEST LABORATORY SERVICES	10	3,407	396	10%	3,813
OAK HILL HOSPITAL		3,358	450	12%	3,808
LARGO MEDICAL CENTER		3,269	522	14%	3,791
DRS CLACK SPENCER WHITE & MCCORMACK PA D/B/A		3,252	538	14%	3,790
PALM BEACH GARDENS MEDICAL CTR LAB		3,401	374	10%	3,775
NORTHWEST MEDICAL CENTER	1	2,850	912	24%	3,763
ABL MEDICAL CARE LLC		3,278	483	13%	3,761
DOCTORS HOSPITAL	2	2,955	800	21%	3,757
Lee Memorial Hospital		2,951	657	18%	3,608
BROWARD HEALTH NORTH CLINICAL LABORATORY		3,079	526	15%	3,605
CORAL SPRINGS MED CTR		3,186	410	11%	3,596
PALMS WEST HOSPITAL LAB	2	2,793	788	22%	3,583
HEALTH PARK MEDICAL CENTER CLINICAL LAB		2,834	726	20%	3,560
Capital Regional Medical Ctr		2,784	702	20%	3,486
NORTH SHORE MEDICAL CENTER		2,689	789	23%	3,478
FLORIDA HOSPITAL ZEPHYRHILLS		3,169	269	8%	3,438
PATIENTS FIRST LAKE ELLA MEDICAL CENTER PA		2,595	819	24%	3,414
THE VILLAGES REGIONAL HOSPITAL		3,145	268	8%	3,413
BLAKE MEDICAL CENTER		2,742	649	19%	3,391
NEW YORK STATE ELR - SUNRISE MEDICAL LABORATORIES		3,288	77	2%	3,365
FLORIDA HOSPITAL FLAGLER	2	3,110	219	7%	3,331
MOFFITT CANCER CENTER	5	3,284	37	1%	3,326
FLORIDA MEDICAL CENTER - A CAMPUS OF NORTH SHORE	2	2,768	548	17%	3,318
CLEVELAND CLINIC MARTIN SOUTH HOSPITAL		3,009	305	9%	3,314
FLORIDA HOSPITAL DELAND	3	2,670	565	17%	3,238

COVID-19: testing by laboratory

Data through Aug 10, 2020 verified as of Aug 11, 2020 at 08:55 AM

Data in this report are provisional and subject to change.

The numbers in the table below represent the number for whom test results were received by the Department of Health. A person can be tested by more than one laboratory and can have both positive and negative results. **Therefore, the sum of the numbers in each column will be larger than the total number of people tested.**

Reporting lab	Inconclusive	Negative	Positive	Percent positive	Total
REGIONAL MEDICAL CENTER BAYONET POINT	1	2,799	263	9%	3,063
PLANTATION GENERAL HOSPITAL		2,241	818	27%	3,059
CARDIOTROPIC LABS	81	2,295	669	22%	3,045
BAYFRONT MEDICAL CENTER	11	2,230	796	26%	3,037
FLORIDA HOSPITAL OF CARROLLWOOD		2,567	453	15%	3,020
NEMOURS CHILDRENS HOSPITAL		2,852	64	2%	2,916
MEDICAL CENTER OF TRINITY CLINICAL LABORATORY		2,406	424	15%	2,830
NORTHSIDE HOSPITAL AND HEART INSTITUTE		2,422	407	14%	2,829
LAKE CITY MEDICAL CENTER		2,070	655	24%	2,725
OCALA REGIONAL MEDICAL CENTER		2,386	315	12%	2,701
MORTON PLANT-MEASE	1	2,485	200	7%	2,686
ST JOSEPHS NORTH HOSPITAL LAB		2,346	297	11%	2,643
BAPTIST MEDICAL CENTER - BEACHES		2,454	172	7%	2,626
QUEST DIAGNOSTICS	3	2,256	315	12%	2,574
IMPERIAL POINT MEDICAL CENTER		2,297	254	10%	2,551
DR. P. PHILLIPS HOSPITAL		2,445	83	3%	2,528
GULF COAST MEDICAL CENTER LAB		1,965	546	22%	2,511
CENTRAL FLORIDA REGIONAL HOSPITAL		2,148	358	14%	2,506
BIOCERNA LABS	127	1,732	624	25%	2,483
LAKEWOOD RANCH MEDICAL CENTER		2,212	247	10%	2,459
INFORM DIAGNOSTICS, INC		2,261	131	5%	2,392
BOSTON HEART DIAGNOSTICS CORP		2,030	354	15%	2,384
ST LUCIE MEDICAL CENTER		1,893	472	20%	2,365
EXACT SCIENCES LABORATORIES		2,130	225	10%	2,355
SOUTH FLORIDA BAPTIST HOSPITAL MICRO	1	1,921	362	16%	2,284
POINCIANA MEDICAL CENTER		1,630	642	28%	2,272
MEDCOMP SCIENCES LLC	27	1,291	870	40%	2,188
FULGENT DIAGNOSTICS	68	1,960	160	7%	2,188
WESTCHESTER HOSPITAL	14	1,782	386	18%	2,182
LEON MEDICAL CENTERS LLC		1,664	517	24%	2,181
SOUTH LAKE HOSPITAL		2,088	82	4%	2,170
VISTA CLINICAL		1,152	986	46%	2,138
BAPTIST MEDICAL CENTER - NASSAU		1,995	105	5%	2,100
UNIVERSITY HOSPITAL AND MEDICAL CENTER		1,481	544	27%	2,025
FLORIDA HOSPITAL NORTH PINELLAS	5	1,845	151	8%	2,001
WEST MARION COMMUNITY HOSPITAL LAB		1,786	212	11%	1,998
PHYSICIANS REGIONAL MEDICAL CENTER - PINE RIDGE RD		1,616	382	19%	1,998
WEST PALM HOSPITAL LAB		1,632	296	15%	1,928
SOUTH SEMINOLE HOSPITAL LABORATORY		1,837	79	4%	1,916
UHEALTH CORAL GABLES/LENNAR MED CTR		1,813	94	5%	1,907
QUEST DIAGNOSTICS - ATLANTA	3	1,654	229	12%	1,886
ALL CHILDREN'S HOSPITAL LAB		1,679	156	9%	1,835
ST PETERSBURG GENERAL HOSPITAL		1,350	470	26%	1,820
MEMORIAL HOSPITAL- MIRAMAR	10	1,637	143	8%	1,790
MEMORIAL HOSPITAL MICRO		1,580	203	11%	1,783
QUEST DIAGNOSTICS LENEXA	13	1,562	135	8%	1,710
NIGHT LITE PEDIATRICS		1,284	409	24%	1,693

COVID-19: testing by laboratory

Data through Aug 10, 2020 verified as of Aug 11, 2020 at 08:55 AM

Data in this report are provisional and subject to change.

The numbers in the table below represent the number for whom test results were received by the Department of Health. A person can be tested by more than one laboratory and can have both positive and negative results. **Therefore, the sum of the numbers in each column will be larger than the total number of people tested.**

Reporting lab	Inconclusive	Negative	Positive	Percent positive	Total
MEASE DUNEDIN HOSPITAL	4	1,513	166	10%	1,683
FLORIDA HOSPITAL FISH MEMORIAL		1,399	284	17%	1,683
HIALEAH HOSPITAL	4	1,261	406	24%	1,671
CITRUS MEMORIAL HOSPITAL LABORATORY		1,582	85	5%	1,667
BAPTIST NORTH EMERGENCY CENTER		1,191	458	28%	1,649
FORT WALTON BEACH MEDICAL CENTER		1,392	238	15%	1,630
ADVENTHEALTH OCALA LABORATORY		1,335	223	14%	1,558
OVIEDO MEDICAL CENTER		1,303	253	16%	1,556
LEE HEALTH COCONUT POINT CLINICAL LAB	1	1,240	303	20%	1,544
MEMORIAL HOSPITAL PEMBROKE	3	1,344	193	13%	1,540
OPTEO LABORATORY		1,505	29	2%	1,534
DOCTORS HOSPITAL OF SARASOTA CLINICAL LABORATORY		1,315	158	11%	1,473
PALMS OF PASADENA HOSPITAL		1,209	213	15%	1,422
ANNE BATES LEACH EYE HOSPITAL/ ABLEH MICROBIOLOGY LABORATORY		1,373	35	2%	1,408
CLEVELAND CLINIC TRADITION HOSPITAL		1,238	167	12%	1,405
RAULERSON HOSPITAL		1,136	244	18%	1,380
ST VINCENT'S MEDICAL CENTER - SOUTHSIDE		1,307	27	2%	1,334
AMERICAN HEALTH ASSOCIATES	5	578	732	56%	1,315
ACCESS MEDICAL LABORATORIES		578	729	56%	1,307
LOWER KEYS MEDICAL CENTER		1,156	117	9%	1,273
PUTNAM COMMUNITY MEDICAL CENTER		1,090	182	14%	1,272
SOUTH BAY HOSPITAL MICRO		1,053	215	17%	1,268
WALGREEN CO	1	1,086	167	13%	1,254
CLEVELAND CLINIC MARTIN NORTH HOSPITAL		1,078	168	13%	1,246
NONA SCIENTIFIC	1	1,063	164	13%	1,228
BARTOW REGIONAL MEDICAL CENTER	1	1,029	176	15%	1,206
CLINICORE		1,112	91	8%	1,203
QUEST DIAGNOSTICS - MIRAMAR	6	315	863	73%	1,184
PHYSICIANS REGIONAL MEDICAL CENTER - COLLIER BLVD	1	901	278	24%	1,180
BETHESDA HOSPITAL WEST		1,045	131	11%	1,176
P4 CLINICAL, LLC	16	969	172	15%	1,157
TWIN CITIES HOSPITAL		1,025	106	9%	1,131
BMCT Molecular Diagnostics Subsection		897	220	20%	1,117
SYNERGY LABORATORIES	2	985	71	7%	1,058
HEALTHQUEST ESOTERIC		519	518	50%	1,037
HIGHLANDS REGIONAL MEDICAL CENTER		834	166	17%	1,000
LAKESIDE MEDICAL CENTER		670	321	32%	991
VIKOR SCIENTIFIC	2	604	378	38%	984
LMHS		901	75	8%	976
ORLANDO VA MEDICAL CENTER		854	111	12%	965
SACRED HEART-EMERALD COAST		789	162	17%	951
GULF BREEZE HOSPITAL LAB	1	813	123	13%	937
PWN HEALTH	4	605	260	30%	869
QUEST DIAGNOSTICS WOOD DALE	2	789	69	8%	860
FLORIDA HOSPITAL ORLANDO		745	73	9%	818
ENGLEWOOD COMMUNITY HOSPITAL		750	68	8%	818
ST VINCENTS CLAY COUNTY		775	23	3%	798

COVID-19: testing by laboratory

Data through Aug 10, 2020 verified as of Aug 11, 2020 at 08:55 AM

Data in this report are provisional and subject to change.

The numbers in the table below represent the number for whom test results were received by the Department of Health. A person can be tested by more than one laboratory and can have both positive and negative results. **Therefore, the sum of the numbers in each column will be larger than the total number of people tested.**

Reporting lab	Inconclusive	Negative	Positive	Percent positive	Total
BAPTIST EMERGENCY CENTER OAKLEAF		649	147	18%	796
ACCESSDX	6	405	368	47%	779
UNIVERSITY OF MIAMI HOSPITAL & CLINICS	1	709	53	7%	763
MARINERS HOSPITAL		644	88	12%	732
AVENTUS BIOLABS	1	382	339	47%	722
UHEALTH DEERFIELD BEACH/UMSYLVESTER DEERFIELD BEACH LABORATORY	2	657	36	5%	695
BAPTIST HEALTH EMERGENCY CENTER COUNTRY WALK		556	132	19%	688
PATHNOSTICS		75	602	89%	677
BAPTIST EMERGENCY CENTER CLAY		580	96	14%	676
CAPSTONE HEALTHCARE		438	233	35%	671
PATIENTS CHOICE LABORATORIES		265	405	60%	670
AVECINA MEDICAL OAKLEAF		398	268	40%	666
JACKSON HOSPITAL CLINICAL LABORATORY		530	84	14%	614
NONE		281	324	54%	605
PATIENTS FIRST - MAHAN DRIVE		164	427	72%	591
ADVANCE MEDICAL OF NAPLES			558	100%	558
VAMC ORLANDO		296	261	47%	557
NCH HEALTHCARE SYSTEM MICROBIOLOGY LAB		1	551	100%	552
LABCORP RTP	1	50	489	91%	540
BARDMOOR LABORATORY	1	468	68	13%	537
LAB24 INC	1		528	100%	529
EGLIN AIRFORCE BASE LAB		478	39	8%	517
LEE MEMORIAL HOSPITAL LAB			517	100%	517
TAMPA COMMUNITY HOSPITAL		341	163	32%	504
AVERO DIAGNOSTICS - IRVING		434	69	14%	503
NCH NORTHEAST		316	171	35%	487
QUEST DIAGNOSTICS - IRVING	9	301	176	36%	486
DESOTO MEMORIAL HOSPITAL CLINICAL LABORATORY	3	354	110	24%	467
QUEST	3	91	373	80%	467
WALGREENS OAKLAND PARK		404	58	13%	462
MINUTECLINIC LLC #3703		386	57	13%	443
ASSURANCE SCIENTIFIC LABORATORIES		339	103	23%	442
PANCARE OF FLORIDA, INC			439	100%	439
SOUTHEAST ALABAMA MEDICAL CENT		391	42	10%	433
LUMINUS DIAGNOSTICS		297	134	31%	431
ORLANDO VETERANS AFFAIRS MEDICAL CENTER		112	277	71%	389
NEW YORK STATE ELR - NORTH SHORE LONG ISLAND JEWISH HEALTH		364	23	6%	387
QUEST DIAGNOSTICS NICHOLS INSTITUTE	5	351	17	5%	373
PHYSICIANS STAT LAB		135	230	63%	365
NEW YORK STATE ELR - NYU HOSPITALS CENTER CLINICAL LABORATORIES		350	12	3%	362
LABCORP	1	82	274	77%	357
HOLY CROSS HOSPITAL LABORATORY			354	100%	354
INFORM DIAGNOSTICS		349	2	1%	351
MEMORIAL PEMBROKE 24/7 CARE CENTER		253	91	26%	344
CLARITY LABS		294	49	14%	343
NEW YORK STATE ELR - LENCO MEDICAL LABORATORY		322	13	4%	335
DYNIX DIAGNOSTICS		187	141	43%	328

COVID-19: testing by laboratory

Data through Aug 10, 2020 verified as of Aug 11, 2020 at 08:55 AM

Data in this report are provisional and subject to change.

The numbers in the table below represent the number for whom test results were received by the Department of Health. A person can be tested by more than one laboratory and can have both positive and negative results. **Therefore, the sum of the numbers in each column will be larger than the total number of people tested.**

Reporting lab	Inconclusive	Negative	Positive	Percent positive	Total
MARTIN MEMORIAL LABORATORY AT ST LUCIE WEST		275	46	14%	321
UNITED CLINICAL LABORATORY LLC		3	315	99%	318
DAVITA LABS		290	26	8%	316
AVECINA MEDICAL SOUTHSIDE		154	159	51%	313
LAB CORP	1	124	188	60%	313
UAB HIGHLANDS LABORATORY		307	3	1%	310
ATLANTIS URGENT CARE		267	40	13%	307
NEW YORK STATE ELR - DEPARTMENT OF CLINICAL LABS		301	5	2%	306
NORTH FLORIDA PEDIATRICS-TALLAHASSEE		281	24	8%	305
ECCOLAB GROUP	1	75	221	74%	297
FLORIDA LABORATORY ANALYSIS		104	184	64%	288
JAY HOSPITAL CLINICAL LABORATORY		211	69	25%	280
CORE DIAGNOSTIC LABORATORIES LLC		219	56	20%	275
MEDARBOR DIAGNOSTICS		1	273	100%	274
TALLAHASSEE PRIMARY CARE ASSOCIATES		242	9	4%	251
NITE LITE PEDIATRICS		163	87	35%	250
GENESIS REFERENCE LABORATORIES		1	243	100%	244
FLO-MEDILAB SERVICES		80	157	66%	237
EXPRESS GENE MOLECULAR DIAGNOSTIC LABORATORY		2	234	99%	236
THERADOC		150	86	36%	236
NCF DIAGNOSTICS & DNA TECHNOLOGIES	10	14	208	90%	232
BAPTIST MD ANDERSON CANCER CENTER		227			227
AVECINA MEDICAL JULINGTON		118	108	48%	226
LABCORP TAMPA	1	22	198	90%	221
ASCEND CLINICAL		215	4	2%	219
MEDSCAN LABORATORY INC		136	77	36%	213
FLAGLER HOSPITAL	4	18	191	90%	213
BIOCERNA LLC	8	154	50	24%	212
TENNESSEE DOH - NASHVILLE	2	190	19	9%	211
SUNRISE MEDICAL LABORATORIES		154	56	27%	210
SMA SPECIALITY MEDICAL LAB		61	146	71%	207
ASSOCIATED PATHOLOGISTS, LLC		158	46	23%	204
HENDRY REGIONAL MEDICAL CENTER		2	199	99%	201
VAMC WEST PALM LAB		5	195	98%	200
ADVENTHEALTH LAB			200	100%	200
VETERANS AFFAIRS MEDICAL CENTER LAB		2	197	99%	199
HOLMES REGIONAL MEDICAL CENTER		3	196	98%	199
ST CLOUD REGIONAL MEDICAL CENTER		126	72	36%	198
UNKNOWN		16	182	92%	198
HOLIDAY CVS LLC		196	2	1%	198
SANFORD REFERENCE LAB		180	7	4%	187
PATHGROUP LABS LLC		90	89	50%	179
BAY PINES VAMC CLINICAL LABORATORY		4	172	98%	176
HOLIDAY CVS LLC DBA CVS PHARMACY #5154		171	5	3%	176
NCH HEALTHCARE BONITA		113	62	35%	175
NEW YORK STATE ELR - NEW YORK PRESBYTERIAN HOSPITAL CUMC CLINICAL		162	13	7%	175
TEMPUS CLINICAL LABORATORY	1	151	22	13%	174

COVID-19: testing by laboratory

Data through Aug 10, 2020 verified as of Aug 11, 2020 at 08:55 AM

Data in this report are provisional and subject to change.

The numbers in the table below represent the number for whom test results were received by the Department of Health. A person can be tested by more than one laboratory and can have both positive and negative results. **Therefore, the sum of the numbers in each column will be larger than the total number of people tested.**

Reporting lab	Inconclusive	Negative	Positive	Percent positive	Total
GENESIS MEDICAL LABORATORY MIAMI FL.		78	90	54%	168
FLORIDA WOMAN CARE LABORATORY LLC		141	21	13%	162
NEW YORK STATE ELR - MOUNT SINAI LABORATORY		154	8	5%	162
LABTECH DIAGNOSTIC		87	74	46%	161
NEW YORK STATE ELR - NEW YORK HOSPITAL LABORATORIES	1	152	6	4%	159
MAVERICK LABS		54	101	65%	155
JAMES A. HALEY VETERANS MICRO LAB			154	100%	154
QUALITOX LABORATORIES		96	58	38%	154
FLORIDA HOSPITAL WAUCHULA		81	71	47%	152
WUESTHOFF REF LABORATORY			149	100%	149
EUROFINS NTD, LLC		121	25	17%	146
UAB UNIVERSITY OF ALABAMA HOSPITAL LAB		139	6	4%	145
BAYA URGENT CARE			145	100%	145
CENTRA CARE		21	123	85%	144
GESSLER CLINIC			144	100%	144
PHAROS HEALTH		69	74	52%	143
PREMIER MEDICAL LABORATORY SERVICES		1	142	99%	143
SANTA ROSA MEDICAL CENTER		1	140	99%	141
BUREAU OF CLINICAL LABORATORIES		119	22	16%	141
NEO GENOMICS - FORT MYERS	1	134	4	3%	139
C.W. BILL YOUNG VA MEDICAL CENTER		4	135	97%	139
MOLECULAR INFECTIOUS DISEASES		134	4	3%	138
ACUTIS DIAGNOSTICS	1	107	25	19%	133
INTEGRATED REGIONAL LABORATORIES		119	12	9%	131
MEMPHIS PATHOLOGY LABORATORY	1	124	5	4%	130
ARCPOINT LABS - FORT MYERS		79	51	39%	130
BMHSI-AEL MICROBIOLOGY LABORATORY	2	102	24	19%	128
ASAP LAB LLC		90	33	27%	123
LEHIGH REGIONAL MEDICAL CENTER LAB		106	15	12%	121
IRL MARKET LAB ALACHUA		89	31	26%	120
STEWART REFERENCE LABORATORY		22	97	82%	119
AMERICAN PATHOLOGY PARTNERS		117	1	1%	118
NEW YORK STATE ELR - ENZO CLINICAL LABS INC		117	1	1%	118
VAMC BAY PINES		1	114	99%	115
PALM BEACH COUNTY HEALTH DEPT LAB		113	2	2%	115
MICROGEN DX		2	113	98%	115
ALLIED HEALTH FORT PIERCE		112			112
ST JUDE CHILDREN'S RESEARCH HOSPITAL		101	11	10%	112
LEON MEDICAL CENTER		7	102	94%	109
ROSEN MEDICAL CENTER		97	12	11%	109
MEDICAL DIAGNOSTICS LABORATORIES,INC		17	91	84%	108
UR MEDICINE LABS- CENTRAL LABORATORY		106	2	2%	108
FLORIDA HOSPITAL HEARTLAND MED CTR LAKE PLACID		74	34	31%	108
MILLENNIUM LAB SERVICES			106	100%	106
AMELIA URGENT CARE		7	98	93%	105
SPARROW HEALTHCARE	2	1	101	97%	104
SACRED HEART HOSPITAL ON THE GULF		55	48	47%	103

COVID-19: testing by laboratory

Data through Aug 10, 2020 verified as of Aug 11, 2020 at 08:55 AM

Data in this report are provisional and subject to change.

The numbers in the table below represent the number for whom test results were received by the Department of Health. A person can be tested by more than one laboratory and can have both positive and negative results. **Therefore, the sum of the numbers in each column will be larger than the total number of people tested.**

Reporting lab	Inconclusive	Negative	Positive	Percent positive	Total
ARCPPOINT LABS OF WEST PALM BEACH			102	100%	102
ADVENT HEALTH -TAMPA		73	24	25%	97
BAYCARE HEALTH SYSTEM		1	95	99%	96
BAPTIST HEALTH SOUTH FLORIDA		4	90	96%	94
DIAGNOSTIC SOLUTIONS		3	90	97%	93
MACDILL AFB HOSPITAL		82	10	11%	92
USAFSAM/PHE		23	69	75%	92
WALGREENS ORLANDO		76	15	16%	91
ADVENT HEALTH CENTRA CARE: WATERFORD LAKES		54	35	39%	89
CENTRACARE		1	87	99%	88
GENETWORKX		15	72	83%	87
FLORIDA COMMUNITY HEALTH CENTERS INC			87	100%	87
ADVENTHEALTH CENTRA CARE OVIEDO		29	57	66%	86
MARTIN MEMORIAL MEDICAL CENTER LAB		12	74	86%	86
VAMC LAKE CITY		51	31	38%	82
TOM LEE COMMUNITY HEALTH CENTER		5	77	94%	82
EMERGENCY PHYSICIANS MEDICAL CENTER			81	100%	81
HEALTH FIRST-HOLMES REGIONAL			81	100%	81
GARCIA CLINICAL LABORATORY		1	77	99%	78
AVERO DIAGNOSTICS		52	24	32%	76
FAST TRACK URGENT CARE CENTER			76	100%	76
PRIVA PATH LABS			75	100%	75
MID-FLORIDA PATHOLOGY		50	25	33%	75
HOLIDAY CVS LLC DBA CVSPHARMACY #5155		73			73
MAYO CLINIC LABS - ROCHESTER MAIN CAMPUS		71	1	1%	72
PACIFIC ANALYTICS			71	100%	71
VAMC GAINESVILLE		2	68	97%	70
BAYFRONT HEALTH BROOKSVILLE			70	100%	70
CENTRAL FLORIDA HEALTH CARE		46	23	33%	69
Highlands Regional Hospital		63	6	9%	69
HOLY CROSS HOSPITAL		1	67	99%	68
VA MEDICAL CENTER		7	61	90%	68
AEL- MEMPHIS		17	50	75%	67
QPS, LLC		66	1	1%	67
DYNAMIC MEDICAL USA			67	100%	67
HOSPITAL FOR SPECIAL SURGERY		65	1	2%	66
AMELIA EXPRESS CARE		2	62	97%	64
DAVITA LABORATORY SERVICES		48	14	23%	62
REFUAH HEALTH CENTER LABORATORY		59			59
MORTON PLANT HOSPITAL/LAB		1	57	98%	58
FINLAY CLINICAL LABORATORY		24	34	59%	58
MORTON PLANT HOSPITAL			57	100%	57
ADVENT HEALTH CENTRA CARE LONGWOOD		6	50	89%	56
GENE BY GENE			56	100%	56
NEW YORK STATE ELR - WADSWORTH HEALTH CENTER		52	3	5%	55
FLORIDA CLINICAL LABORATORY-BIOREFERENCE LABORATORIES		10	45	82%	55
NAVY HOSPITAL			55	100%	55

COVID-19: testing by laboratory

Data through Aug 10, 2020 verified as of Aug 11, 2020 at 08:55 AM

Data in this report are provisional and subject to change.

The numbers in the table below represent the number for whom test results were received by the Department of Health. A person can be tested by more than one laboratory and can have both positive and negative results. **Therefore, the sum of the numbers in each column will be larger than the total number of people tested.**

Reporting lab	Inconclusive	Negative	Positive	Percent positive	Total
BROWARD HEALTH MEDICAL CENTER		1	53	98%	54
EXACT SCIENCES LABORATORIES, LLC		10	44	81%	54
FISHERMENS HOSPITAL CLINICAL LAB		51	2	4%	53
USA HEALTH UNIVERSITY HOSPITAL CLINICAL LABORATORY		51	1	2%	52
NIGHT LITE PEDIATRICS URGENT CARE		22	29	57%	51
SARASOTA CO. HEALTH DEPT # 58		40	11	22%	51
NEW YORK STATE ELR - EMPIRECITY LABORATORIES		42	8	16%	50
AMERICAN RESEARCH LABS		2	48	96%	50
BAYCARE LAB		1	49	98%	50
SOLARIS DIAGNOSTICS		3	46	94%	49
INTEGRITY LABORATORIES			49	100%	49
MILLENIUM PHYSICIANS GROUP			49	100%	49
ARTHREX MEDICAL CENTER		28	21	43%	49
CLINICAL REFERENCE LABORATORY		45	4	8%	49
HEALTHLINK DIAGNOSTIC LABORATORIES		1	48	98%	49
P4 DIAGNOSTIX LABORATORY NETWORK		1	48	98%	49
ALLSOUTH URGENT CARE			48	100%	48
OPTUM LABS LLC		2	46	96%	48
HURLBURT FIELD CLINIC		23	24	51%	47
LABCORP BIRMINGHAM	1	4	42	89%	47
SHORELINE PHYSICIAN GROUP			47	100%	47
VHA PUBLIC HEALTH REFERENCE LABORATORY- PALO ALTO		27	19	41%	46
US BIOTEK LABORATORIES			46	100%	46
H LEE MOFFITT CANCER CENTER MICRO		46			46
LABSTAT		1	44	98%	45
PROVIDENCE HOSPITAL LABORATORY		43	2	4%	45
QUEST TAMPA (NEW YORK ELR)		34	10	23%	44
325TH MEDICAL GROUP			44	100%	44
NAVAL HOSPITAL - JACKSONVILLE		1	43	98%	44
FULGENT GENETICS	1	22	20	47%	43
QUEST DIAGNOSTICS-N ST PETERSBURG-5TH			43	100%	43
ACCU REFERENCE MEDICAL LAB			43	100%	43
STAGEZERO LIFE SCIENCES INC		37	5	12%	42
NEW PLANT CITY FAMILY CARE		14	28	67%	42
LAB CORP TAMPA			42	100%	42
BIOREFERENCE LABORATORIES		3	38	93%	41
SEBASTIAN RIVER MEDICAL CENTER		11	30	73%	41
FLORIDA HOSPITAL NEW SMYRNA		4	37	90%	41
LAB CORP RTP	1	2	38	93%	41
BAYFRONT HEALTH ER PINELLAS PARK		18	23	56%	41
BALDWIN PEDIATRICS		37	4	10%	41
Quest Diag Unspecifd		15	26	63%	41
GULF COAST MOLECULAR LABORATORIES		13	28	68%	41
NEW YORK STATE ELR - MONTEFIORE MEDICAL CENTER LABORATORIES - MOSES		34	7	17%	41
DOCTOR'S MEMORIAL HOSPITAL		2	38	95%	40
DEPARTMENT OF VETERANS AFFAIRS JAMES A. HALEY VETERANS HOSPITAL			40	100%	40
LABORATORY CORP OF AMERICA	1	18	21	53%	40

COVID-19: testing by laboratory

Data through Aug 10, 2020 verified as of Aug 11, 2020 at 08:55 AM

Data in this report are provisional and subject to change.

The numbers in the table below represent the number for whom test results were received by the Department of Health. A person can be tested by more than one laboratory and can have both positive and negative results. **Therefore, the sum of the numbers in each column will be larger than the total number of people tested.**

Reporting lab	Inconclusive	Negative	Positive	Percent positive	Total
EAST MANATEE FAMILY	1		39	98%	40
AVELLINO LAB USA, INC		38	2	5%	40
RCA LABORATORY SERVICES, LLC		10	30	75%	40
MIAMI VA HEALTHCARE SYSTEM			40	100%	40
JEFFERY WEINZWEIG			39	100%	39
NEW YORK STATE ELR - KALEIDA HEALTH CENTER FOR LABORATORY		35	4	10%	39
EGLIN REGIONAL MEDICAL CENTER		4	35	90%	39
NORTH FLORIDA PEDIATRICS-LAKE CITY			38	100%	38
FAST TRACK URGENT CARE CENTER - CARROLLWOOD			37	100%	37
CAREMOUNT MEDICAL - PATHOLOGY		36			36
FAWCETT MEMORIAL HOSPITAL-LAB		1	34	97%	35
SCIONLAB SERVICES LLC		28	7	20%	35
ST. CLOUD MEDICAL GROUP		35			35
GENPATH			35	100%	35
IRL		4	31	89%	35
NORTH FLORIDA/SOUTH GEORGA VETERANS HEALTH SYSTEM			35	100%	35
NEW YORK STATE ELR - QUEST DIAGNOSTICS NICHOLS		32	2	6%	34
HUNTSVILLE HOSPITAL LABORATORY		25	8	24%	33
HEALTH FIRST-PALM BAY			33	100%	33
LABORATORY SPECIALISTS OF MICHIGAN			33	100%	33
BLOCK, NATION, CHASE, AND SMOLEN FAMILY MEDICINE		21	12	36%	33
UNKNOWN - BAD FACILITY CODE		2	31	94%	33
DESOTO MEMORIAL HOSPITAL LAB			33	100%	33
MEDICAL DIAGNOSTIC LAB		1	31	97%	32
ST VINCENT'S BIRMINGHAM LABORATORY		32			32
CURATIVE LABS			32	100%	32
EXPERTUS LABORATORIES INC		11	21	66%	32
MOBILE INFIRMARY MED CENTER PATH LAB		28	3	10%	31
NEW YORK STATE ELR - WHITE PLAINS HOSPITAL CENTER LAB		31			31
QUEST DIAGNOSTICS-VERO BEACH-37TH ST		31			31
SMA SPECIALTY MEDICAL LAB		1	30	97%	31
ST. MARYS MEDICAL CENTER		1	30	97%	31
ADVENT HEALTH CENTRA CARE		7	23	77%	30
NXGEN MDX		18	12	40%	30
CLINICAL RESEARCH SEQUENCING PLATFORM			30	100%	30
CAPITAL REGIONAL MEDICAL CENTER		1	29	97%	30
DICKERT		26	3	10%	29
P4CLINICAL	3	2	24	83%	29
FINLAY CLINICAL LABORATORY INC		26	3	10%	29
TRADITION MEDICAL CENTER LABORATORY		9	20	69%	29
NEW YORK STATE ELR - NEWYORK-PRESBYTERIAN/QUEENS DIAGNOSTIC		28	1	3%	29
LAB PLUS, LLC AT SAINT THOMAS WEST HOSPITAL		20	8	29%	28
QUEST DIAGNOSTIC INC	1	3	24	86%	28
LABFIRST - DEPARTMENT OF PATHOLOGY		27	1	4%	28
QUEST DIAGNOSTICS NICHOLS INSTITUTE- LPP		3	25	89%	28
CAPE CANAVERAL HOSPITAL			27	100%	27
ASSOCIATED CLINICAL LABORATORIES		26	1	4%	27

COVID-19: testing by laboratory

Data through Aug 10, 2020 verified as of Aug 11, 2020 at 08:55 AM

Data in this report are provisional and subject to change.

The numbers in the table below represent the number for whom test results were received by the Department of Health. A person can be tested by more than one laboratory and can have both positive and negative results. **Therefore, the sum of the numbers in each column will be larger than the total number of people tested.**

Reporting lab	Inconclusive	Negative	Positive	Percent positive	Total
ADVENTHEALTH CENTRA CARE SANFORD		6	21	78%	27
KENDALL REGIONAL MEDICAL CENTER LAB	1		26	96%	27
CHILDREN'S HOSPITAL OF ALABAMA		27			27
NEXT MOLECULAR ANALYTICS		1	26	96%	27
RDX BIOSCIENCE,			26	100%	26
SUNCOAST LABS			26	100%	26
SANFORD LABORATORIES		24	2	8%	26
INTERLAB		1	25	96%	26
DOH-WEST PALM BEACH BRANCH LABORATORY			26	100%	26
CDC		17	9	35%	26
MY CLINICAL LAB			26	100%	26
GENESIS LABORATORY MANAGEMENT		1	24	96%	25
QDX PATHOLOGY SERVICES		15	10	40%	25
BAYFRONT		21	4	16%	25
QUEST DIAGNOSTICS INC.			25	100%	25
GRAVITY DIAGNOSTICS		14	11	44%	25
ST. ANTHONY'S HOSPITAL			24	100%	24
FLORIDA MEDICAL CLINIC		1	23	96%	24
THE CENTER FOR URGENT CARE		3	21	88%	24
CITRUS MEMORIAL HEALTH SYSTEM LAB		2	22	92%	24
NEW YORK STATE ELR - STONY BROOK UNIVERSITY MEDICAL CENTER		21	3	13%	24
NEW YORK STATE ELR - CATHOLIC HEALTH SYSTEM DEPT LABORATORY		24			24
UNIVERSITY HEALTH SYSTEM INC		20	3	13%	23
PRIDE DIAGNOSTICS		20	3	13%	23
LABORATORY DYNAMICS		20	3	13%	23
PALM BAY HOSPITAL		1	22	96%	23
LIFEBRITE	1		21	95%	22
CAYUGA MEDICAL CENTER AT ITHACA		19	3	14%	22
AURORA DIAGNOSTICS BERNHARDT LABORATORIES PATHOLOGY SERVICE		22			22
LABCORP OF AMERICA		8	14	64%	22
PENNSYLVANIA DEPT OF HEALTH		19	3	14%	22
POPLAR HEALTHCARE PLLC	1	10	11	50%	22
PATRICK AIR FORCE BASE		1	20	95%	21
LAB			21	100%	21
NEW YORK STATE ELR - UNIVERSITY HOSPITAL, STONY BROOK SOUTHAMPTON		21			21
CENTRA CARE - WATERFORD LAKES		2	19	90%	21
GRAVITY DIAGNOSTICS, LLC		8	13	62%	21
SMA LAB		4	17	81%	21
APP-UNIPATH, LLC		19	1	5%	20
ST. CLOUD HOSPITAL		20			20
MIAMI BEACH COMMUNITY HEALTH CENTER			20	100%	20
BROWARD HEALTH CORAL SPRINGS EPIDEMIOLOGY DEPT			20	100%	20
ASSOCIATED PATHOLOGISTS		16	4	20%	20
DIAGNOSTIC LABORATORY OF OKLAHOMA		18	1	5%	19
FIRST CHOICE URGENT CARE			19	100%	19
VENICE REGIONAL MEDICAL LAB SERVICES			19	100%	19
AMMON LABS		10	9	47%	19

COVID-19: testing by laboratory

Data through Aug 10, 2020 verified as of Aug 11, 2020 at 08:55 AM

Data in this report are provisional and subject to change.

The numbers in the table below represent the number for whom test results were received by the Department of Health. A person can be tested by more than one laboratory and can have both positive and negative results. **Therefore, the sum of the numbers in each column will be larger than the total number of people tested.**

Reporting lab	Inconclusive	Negative	Positive	Percent positive	Total
ADVENT HEALTH FISH MEMORIAL		2	17	89%	19
VA		15	4	21%	19
MED HEALTH SERVICES		18	1	5%	19
FHMG_CTR FOR SENIOR HEALTH		18	1	5%	19
MAYO CLINIC LABS - ROCHESTER SUPERIOR DRIVE		2	17	89%	19
ARCPPOINT LABS OF TAMPA		1	18	95%	19
INTEGRATED REGIONAL LABORATORIES - LARGO			19	100%	19
BAY MEDICAL CENTER SACRED HEART HEALTH SYSTEM		4	15	79%	19
VIERA HOSPITAL			19	100%	19
STONE WASH CLINICAL LABORATORIES		2	16	89%	18
PARRISH MEDICAL CENTER		1	17	94%	18
NEW YORK STATE ELR - WESTCHESTER MEDICAL CENTER		18			18
PALO ALTO VA MEDICAL CENTER		1	17	94%	18
INTERCOASTAL MEDICAL GROUP			18	100%	18
LECONTE MEDICAL CENTER LAB		14	4	22%	18
VAMC			18	100%	18
WUESTHOFF MEMORIAL HOSPITAL			18	100%	18
CBS LABORATORY		1	17	94%	18
GENESIS DIAGNOSTICS			17	100%	17
ST FRANCIS HOSPITAL		14	3	18%	17
WATSON CLINIC LLP SOUTH			17	100%	17
MOLECULAR DIAGNOSTICS			17	100%	17
NEW YORK STATE ELR - BROOKDALE UNIVERSITY HOSPITAL		16	1	6%	17
NEW YORK STATE ELR - QUEST DIAGNOSTICS INCORPORATED		14	3	18%	17
CLEVELAND CLINIC FOUNDATION		9	8	47%	17
DOCTORS MEMORIAL HOSPITAL		8	9	53%	17
WUESTHOFF MEDICAL CENTER-MELBOURNE			16	100%	16
MIDWAY SPECIALTY CARE CENTER		8	8	50%	16
XPRESS WELLNESS URGENT CARE			16	100%	16
HEALTH FIRST-VIERA HOSPITAL			16	100%	16
MOLECULAR TESTING LABS			16	100%	16
TGH		1	15	94%	16
SEVEN RIVERS REGIONAL MEDICAL CENTER		4	12	75%	16
MADISON CORE LABORATORIES		15	1	6%	16
JACKSON HEALTH SYSTEM			15	100%	15
CENTRA CARE CONWAY			15	100%	15
NEW YORK STATE ELR - LENOX HILL HOSPITAL		13	2	13%	15
QUEST DIAGNOSTICS NICHOLS INSTITUTE - SJC (LPP)		10	5	33%	15
NEW YORK STATE ELR - WILSON MEMORIAL REGIONAL MEDICAL CENTER		14	1	7%	15
FLORIDA DEPARTMENT OF HEALTH		10	5	33%	15
DIATHERIX		13	2	13%	15
SUNQUEST		2	13	87%	15
NORTH SHORE UNIVERSITY HOSPITAL LABORATORY		14	1	7%	15
LABCORP INC		2	13	87%	15
CONNECTICUT DEPARTMENT OF HEALTH		14	1	7%	15
QUEST DIAGNOSTICS INCORPORATED			15	100%	15
IPSUM DIAGNOSTICS			15	100%	15

COVID-19: testing by laboratory

Data through Aug 10, 2020 verified as of Aug 11, 2020 at 08:55 AM

Data in this report are provisional and subject to change.

The numbers in the table below represent the number for whom test results were received by the Department of Health. A person can be tested by more than one laboratory and can have both positive and negative results. **Therefore, the sum of the numbers in each column will be larger than the total number of people tested.**

Reporting lab	Inconclusive	Negative	Positive	Percent positive	Total
QUESTDIAGNOSTICS INCORPORATED		1	14	93%	15
NEW YORK STATE ELR - ROCHESTER GENERAL HOSPITAL LABORATORY		14	1	7%	15
SUNTREE INTERNAL MEDICINE		14			14
TIDE LABORATORIES		4	10	71%	14
HEALTH CENTRAL HOSPITAL			14	100%	14
WHITE WILSON MEDICAL CENTER CLINIC			14	100%	14
QUEST INFECTIOUS DISEASE	1	9	4	29%	14
HEALTH FIRST CAPE CANAVERAL HOSPITAL			14	100%	14
MILLENNIUM PHYSICIAN GROUP LCC			14	100%	14
OUT OF STATE		14			14
PARK WEST MEDICAL CENTER		13	1	7%	14
GOLDEN GATE FAMILY CLINIC			14	100%	14
NEW YORK STATE ELR - BRONX LEBANON HOSPITAL-MEDICAL CENTER		12	1	8%	13
NORTH OKALOOSA MEDICAL CENTER			13	100%	13
POARCH BANC CREEK INDIANS TRIBAL HEALTH DEPARTMENT			13	100%	13
SOUTHEAST FAMILY HEALTHCARE CENTER			13	100%	13
MEDCOMP SCIENCES			13	100%	13
NEW YORK STATE ELR - ERIE COUNTY MEDICAL CTR CLINICAL LABS		13			13
ORLANDO HEALTH		2	11	85%	13
LABCORP - CLEARWATER		3	10	77%	13
BAPTIST SOUTH MEDICAL CENTER		2	11	85%	13
DEPARTMENT OF VETERANS AFFAIRS MEDICAL CENTER			13	100%	13
XERA MED RESEARCH			13	100%	13
FLORIDA DEPT OF HEALTH		4	8	67%	12
BROWARD DIALYSIS			12	100%	12
AMERICAN HEALTH ASSOCIATES OF TAMPA		2	10	83%	12
BAYFRONT HEALTH SPRING HILL			12	100%	12
PRECISION HEALTH SOLUTIONS LAB			12	100%	12
ADVANCED URGENT CARE		10	2	17%	12
CLARITY LAB SOLUTIONS		3	9	75%	12
UVMC MICROBIOLOGY		12			12
PROTEUS MOLECULAR AND CLINICAL LAB		8	4	33%	12
INTEGRITY LABORATORIES, LLC		5	7	58%	12
DOH		1	11	92%	12
TOTAL RENAL LABORATORIES INC		7	5	42%	12
TEN HEALTHCARE		2	10	83%	12
REDITUS LABORATORIES			12	100%	12
SELECT LABORATORIES MARION COUNTY, LLC.			12	100%	12
ESCAMBIA COMMUNITY CLINIC			11	100%	11
LAB INTERMARKET FACILITY LAB			11	100%	11
FHMG LAKE MARY PEDS		10	1	9%	11
AMERICAN ESOTERIC LABORATORIES			11	100%	11
UPMC CHAUTAUQUA AT WCA LABORATORY		11			11
BOND CLINIC			11	100%	11
DELRAY MEDICAL CENTER LAB			11	100%	11
MAGNOLIA DIAGNOSTIC			11	100%	11
NEW YORK STATE ELR - SARATOGA HOSPITAL LABORATORY		11			11

COVID-19: testing by laboratory

Data through Aug 10, 2020 verified as of Aug 11, 2020 at 08:55 AM

Data in this report are provisional and subject to change.

The numbers in the table below represent the number for whom test results were received by the Department of Health. A person can be tested by more than one laboratory and can have both positive and negative results. **Therefore, the sum of the numbers in each column will be larger than the total number of people tested.**

Reporting lab	Inconclusive	Negative	Positive	Percent positive	Total
ADVENTHEALTH PALM COAST			11	100%	11
TRUGENX			11	100%	11
NIGHT LITE PEDIATRICS WINTER GARDEN		7	4	36%	11
EGL GENETIC DIAGNOSTICS		1	10	91%	11
NORTH FLORIDA PEDIATRICS		1	10	91%	11
FLORIDA COMMUNITY HEALTH CENTER OF ST. LUCIE			11	100%	11
INDIAN RIVER MEDICAL CENTER		11			11
NEW JERSEY DEPARTMENT OF HEALTH COMMUNICABLE DISEASE SERVICE		3	7	70%	10
NEW YORK STATE ELR - NEW YORK CITY DEPARTMENT OF HEALTH & MENTAL		9	1	10%	10
VENICE REGIONAL MEDICAL CENTER			10	100%	10
LAKE BALDWIN CBOC		9	1	10%	10
BROWARD HEALTH CARE			10	100%	10
MEDICAL LABORATORY DIAGNOSTICS			10	100%	10
PERSONALIZED GENETIC TESTING			10	100%	10
BAYFRONT HEALTH PORT CHARLOTTE			10	100%	10
LABCORP - MIAMI		4	6	60%	10
SELECT REFERENCE LABORATORIES, LLC			10	100%	10
CORE LABORATORY		1	9	90%	10
BAYCARE OUTREACH LABORATORY SERVICES		1	9	90%	10
INTERNAL LAB		7	3	30%	10
PARKWEST MEDICAL CENTER		9	1	10%	10
NEW YORK STATE ELR - CATHOLIC HEALTH SERVICES REGIONAL LABORATORY		8	2	20%	10
JACKSON NORTH MEDICAL CENTER		1	9	90%	10
FLORIDA HOSPITAL LABS			9	100%	9
TYNDALL AFB			9	100%	9
BAY PINES VA		1	8	89%	9
EAST ALABAMA MEDICAL CENTER LABORATORY		6	3	33%	9
NEW YORK STATE ELR - GOOD SAMARITAN HOSPITAL LABORATORY		9			9
CONSOLIDATED LAB SERVICES		8	1	11%	9
ELLENTON URGENT CARE			9	100%	9
NEW YORK STATE ELR - LOURDES HOSPITAL INC		9			9
BAY CARE OCCUPATIONAL CLINIC			9	100%	9
ADVENT HEALTH SEBRING			9	100%	9
Diatherix Laboratories, LLC		3	6	67%	9
MINUTE CLINIC INCORPORATE		8	1	11%	9
PROMEDICA LABORATORIES		8	1	11%	9
WESTPAC LABS			9	100%	9
HUNTINGTON HOSPITAL LABORATORY		8	1	11%	9
CLINICAL PATHOLOGY LABS		1	8	89%	9
LEON CHD		9			9
MICHIGAN DEPARTMENT OF HEALTH AND HUMAN SERVICES			9	100%	9
KEYS MEDICAL GROUP			9	100%	9
NEW YORK STATE ELR - VASSAR BROTHERS MEDICAL CENTER LABORATORY		9			9
DYNAMIC DNA LAB		1	8	89%	9
DEVANSH LAB WERKS INC		6	2	25%	8
WOLFSON (USE BAPTIST)			8	100%	8
DOCTOR'S IN HOUSE LAB			8	100%	8

COVID-19: testing by laboratory

Data through Aug 10, 2020 verified as of Aug 11, 2020 at 08:55 AM

Data in this report are provisional and subject to change.

The numbers in the table below represent the number for whom test results were received by the Department of Health. A person can be tested by more than one laboratory and can have both positive and negative results. **Therefore, the sum of the numbers in each column will be larger than the total number of people tested.**

Reporting lab	Inconclusive	Negative	Positive	Percent positive	Total
CENTRA CARE - SAND LAKE			8	100%	8
UMHC/SYLVESTER AT KENDALL		1	7	88%	8
ST VINCENTS MEDICAL CENTER RIVERSIDE NURSING			8	100%	8
STATE LAB		1	7	88%	8
SPORTS DRUG TESTING LABORATORY			8	100%	8
THE COMMONWEALTH OF MASSACHUSETTS			8	100%	8
NEW YORK STATE ELR - JAMES J PETERS VA MEDICAL CENTER		6	2	25%	8
BAYONET POINT MEDICAL CENTER			8	100%	8
NEW YORK STATE ELR - ST PETER'S BENDER LABORATORY		8			8
PRATTVILLE BAPTIST HOSPITAL		7	1	13%	8
NORTH CAROLINA DEPARTMENT OF HEALTH & HUMAN SERVICES			8	100%	8
GENEUS DIAGNOSTICS			8	100%	8
BAYCARE LABORATORIES			8	100%	8
NEW YORK STATE ELR - NORTH CENTRAL BRONX HOSP		7	1	13%	8
ST. JOSEPH HOSPITAL AND HEALTH CARE INC.			8	100%	8
BOCA BIOLISTICS REFERENCE LABORATORY			8	100%	8
NORTH BAY HOSPITAL			7	100%	7
NORTHWEST FLORIDA COMMUNITY HOSPITAL		1	6	86%	7
HEALTHMARK REGIONAL HOSPITAL LAB		3	4	57%	7
PECONIC BAY MEDICAL CENTER LABORATORY		6	1	14%	7
ORMOND BEACH CENTRA CARE			7	100%	7
ROCKLEDGE			7	100%	7
PENSACOLA PEDIATRICS			7	100%	7
HIGHLANDS MEDICAL CENTER		7			7
NO NAME		5	2	29%	7
SYLVESTER AT PLANTATION LABORATORY		6	1	14%	7
NEW YORK STATE ELR - HUDSON VALLEY HOSPITAL CENTER LABORATORY		6	1	14%	7
UNIVERSITY HOSPITAL - STONY BROOK EASTERN		7			7
ST CATHERINE OF SIENA HOSPITAL		7			7
ST VINCENT'S EAST LABORATORY		6	1	14%	7
LAKE CITY VETERANS HOSPITAL			7	100%	7
NEW YORK PRESBYTERIAN - ALLEN HOSPITAL		7			7
LONGLEAF DIAGNOSTIC LABORATORIES		2	5	71%	7
FLORIDA DEPARTMENT OF HEALTH IN LAKE COUNTY		3	4	57%	7
CANTON-POTSDAM HOSPITAL LABORATORY		7			7
NEW YORK STATE ELR - LABORATORY ALLIANCE OF CENTRAL NEW		7			7
LABORATORY OF FLORIDA			7	100%	7
FLORIDA DEPARTMENT OF HEALTH IN HILLSBOROUGH COUNTY			7	100%	7
FLORIDA CLINICAL LAB			7	100%	7
NADAL PEDIATRICS - VICTORIA STREET (3385)			7	100%	7
X-GENE MOLECULAR LABS		1	6	86%	7
LEE MEMORIAL HEALTH PARK LAB			7	100%	7
BIOFIRE			7	100%	7
NORTHWELL HEALTH PLAINVIEW HOSPITAL LABORATORY		5	2	29%	7
CLEVELAND CLINIC			7	100%	7
AMELIA MEDICAL CARE			7	100%	7
WATSON CLINIC LLP MAIN			7	100%	7

COVID-19: testing by laboratory

Data through Aug 10, 2020 verified as of Aug 11, 2020 at 08:55 AM

Data in this report are provisional and subject to change.

The numbers in the table below represent the number for whom test results were received by the Department of Health. A person can be tested by more than one laboratory and can have both positive and negative results. **Therefore, the sum of the numbers in each column will be larger than the total number of people tested.**

Reporting lab	Inconclusive	Negative	Positive	Percent positive	Total
SOUTHEAST ALABAMA MEDICAL CENTER			7	100%	7
ADVENTHEALTH CENTRA CARE LAKE MARY		2	4	67%	6
ADVENTHEALTH MEDICAL GROUP		5	1	17%	6
FHMG-FLORIDA HOSPITAL MEDICAL GROUP		3	3	50%	6
ST JOSEPH HOSPITAL		5	1	17%	6
CREATIVE TESTING SOLUTIONS			6	100%	6
LONGWOOD FAMILY PRACTICE		6			6
ST ELIZABETH MEDICAL CENTER LABORATORY		6			6
LABCORP NEW PORT RICHEY			6	100%	6
ARCHBOLD MEMORIAL HOSPITAL/LAB		3	3	50%	6
BAYCARE MEDICAL GROUP INC			6	100%	6
LEE COUNTY HEALTH DEPARTMENT		4	2	33%	6
STATEN ISLAND UNIVERSITY HOSPITAL-POUCH		6			6
BROOKWOOD BAPTIST MEDICAL CENTER		6			6
PATHOGENIUS LABORATORIES		2	4	67%	6
DOCTORS MEMORIAL FAMILY MEDICINE			6	100%	6
MICHIGAN DEPARTMENT OF COMMUNITY HEALTH		1	5	83%	6
MONTEFIORE NEW ROCHELLE HOSPITAL		6			6
LEE MEMORIAL LAB GULF COAST			6	100%	6
FLORIDA WOMAN CARE LABORATORY			6	100%	6
ADVENTHEALTH CENTRA CARE ORMOND BEACH			6	100%	6
ACH			6	100%	6
MINI ER AND URGENT CARE			6	100%	6
TAMIAMI LAB MILLENIUM			6	100%	6
TPCA CLINICAL LABORATORIES		3	3	50%	6
TRUE HEALTH DIAGNOSTICS		1	5	83%	6
SHELBY COUNTY HEALTH CARE CORPORATION		4	2	33%	6
NEW YORK STATE ELR - JAMAICA HOSPITAL MEDICAL CENTER		6			6
NEIGHBORHOOD MEDICAL CENTER		6			6
PALM BEACH PATHOLOGY		4	2	33%	6
ADVENTHEALTH PEDIATRICS/LAKE MARY PEDS		5	1	17%	6
UPMC HEALTH SYSTEM		4	1	20%	5
BIOTECH			5	100%	5
LEHIGH VALLEY HOSPITAL		3	2	40%	5
FRANCES WARDE MEDICAL LABORATORY		2	3	60%	5
DALE MEDICAL CENTER		2	3	60%	5
THE VILLAGES CLINICAL LAB		4	1	20%	5
XRL SXF REF LAB		5			5
SPECIALITY LABORATORIES,INC		4	1	20%	5
FLOWERS HOSPITAL		1	4	80%	5
URGENT CARE CURE		1	4	80%	5
TALLAHASSEE PRIMARY CARE ASSOC, PA		5			5
UNKNOWN LAB			5	100%	5
ARNOT OGDEN MEDICAL CENTER LABORATORY		5			5
ST ANTHONY NORTH			5	100%	5
DOH JACKSONVILLE CENTRAL LABORATORY		3	2	40%	5
MINUTECLINIC DIAGNOSTIC OF RHODE ISLAND, LLC #729		4	1	20%	5

COVID-19: testing by laboratory

Data through Aug 10, 2020 verified as of Aug 11, 2020 at 08:55 AM

Data in this report are provisional and subject to change.

The numbers in the table below represent the number for whom test results were received by the Department of Health. A person can be tested by more than one laboratory and can have both positive and negative results. **Therefore, the sum of the numbers in each column will be larger than the total number of people tested.**

Reporting lab	Inconclusive	Negative	Positive	Percent positive	Total
LABCORP - NAPLES			5	100%	5
CHEMISYS LABORATORIES			5	100%	5
LAKELAND REGIONAL HEALTH			5	100%	5
NEW YORK STATE ELR - SOUTHSIDE HOSPITAL NORTHWELL HEALTH LABORATORY		4	1	20%	5
KEY PRIMARY CASE			5	100%	5
JFK MEDICAL CENTER NORTH LAB			5	100%	5
Cleveland Clinic Laboratories		1	4	80%	5
LAB CORP OF AMERICA		1	4	80%	5
LABCORP BURLINGTON CYTO		4	1	20%	5
BROWARD COUNTY HEALTH DEPT.			5	100%	5
PATHGROUP			5	100%	5
COMMUNITY HEALTH CENTER			5	100%	5
TMH PHYSICIAN PARTNERS - MONTICELLO		5			5
AEL KNOXVILLE			5	100%	5
QUOTIENT SCIENCES			5	100%	5
CHILDREN'S HOSPITAL OF PHILADELPHIA		5			5
SUNCOAST COMMUNITY HEALTH CENTERS PEDIATRICS		1	4	80%	5
ADVENT HEALTH CENTRA CARE PALM COAST			5	100%	5
BOCA RATON REGIONAL HOSPITAL LAB			5	100%	5
PRECISION LABS LLC		1	3	75%	4
STATEN ISLAND UNIVERSITY HOSPITAL		4			4
METROPOLITAN HOSPITAL CENTER		4			4
GENUS DIAGNOSTICS			4	100%	4
MISSOURI DEPARTMENT OF HEALTH AND SENIOR SERVICES			4	100%	4
SOUTHWESTERN REGIONAL MEDICAL CENTER - TULSA		4			4
BOZEMAN HEALTH DEACONESS HOSPITAL		3	1	25%	4
NEW YORK STATE ELR - SAMARITAN HOSPITAL LABORATORY		4			4
BAY CARE			4	100%	4
MEDLOGIC, LLC		1	3	75%	4
STATEN ISLAND UNIVERSITY HOSPITAL SEGUINE AVE		4			4
COMMUNITY HEALTH NORTHWEST FLORIDA			4	100%	4
NEW YORK STATE ELR - BROOKLYN HOSPITAL CENTER DOWNTOWN CAMPUS		4			4
COVENIENT CARE MEDICAL CLINIC			4	100%	4
MINUTECLINIC DIAGNOSTIC OF RHODE ISLAND, LLC #1544		4			4
QUEST DIAGNOSTIC INC TECHNICAL			4	100%	4
DCH REGIONAL MEDICAL CENTER LABORATORY		4			4
Covance Central Laboratory			4	100%	4
FISHERMEN'S HOSPITAL			4	100%	4
MANATEE PEDIATRICS			4	100%	4
NEW HAMPSHIRE DEPARTMENT OF HEALTH AND HUMAN SERVICES		3	1	25%	4
DAVITA LABORATORY		4			4
INTERLACHEN PEDIATRICS		4			4
NEWYORK-PRESBYTERIAN/ LAWRENCE HOSPITAL LABORATORY		4			4
THOMAS JEFFERSON UNIVERSITY HOSPITAL		4			4
QUEST DIAGNOSTICS- MELBOURNE			4	100%	4
DOCTOR'S IN HOUSE LABORATORY			4	100%	4
EXPRESS TESTING-ONE			4	100%	4

COVID-19: testing by laboratory

Data through Aug 10, 2020 verified as of Aug 11, 2020 at 08:55 AM

Data in this report are provisional and subject to change.

The numbers in the table below represent the number for whom test results were received by the Department of Health. A person can be tested by more than one laboratory and can have both positive and negative results. **Therefore, the sum of the numbers in each column will be larger than the total number of people tested.**

Reporting lab	Inconclusive	Negative	Positive	Percent positive	Total
FINLAY C. LABORATORY		3	1	25%	4
BAPTIST MEDICAL CENTER EAST		2	2	50%	4
ACHS		2	2	50%	4
ASCENSION ST. VINCENT'S PRIMARY CARE			4	100%	4
COASTAL LABORATORIES			4	100%	4
BEAUMONT LABORATORY			4	100%	4
IRL MARKET LAB			4	100%	4
NOAH CLINICAL LABORATORY			4	100%	4
GENUS3		1	3	75%	4
INTERMARKET FACILITY			4	100%	4
ILLINOIS DEPT OF PUBLIC HEALTH LAB - SPRINGFIELD			4	100%	4
ADVENTHEALTH ZEPHYRHILLS			4	100%	4
LINCOLN MEDICAL AND MENTAL HEALTH CENTER		4			4
OKLAHOMA STATE UNIVERSITY DIAGNOSTIC LAB			4	100%	4
NICHOLS INSTITUTE QUEST DIAGNOSTICS		2	2	50%	4
COMMUNITY HEALTH OF SOUTH FLORIDA			4	100%	4
PEDIATRIC HEALTH CARE ALLIANCE			4	100%	4
DTR LABS		3	1	25%	4
COLORADO DEPARTMENT OF PUBLIC HEALTH AND ENVIRONMENT			4	100%	4
ABBOTT			4	100%	4
LAWTON CHILES HEALTH CENTER			4	100%	4
ST. JOSEPH'S HOSPITAL NORTH			3	100%	3
NORTHERN DUTCHESS HOSPITAL LABORATORY		3			3
VIRTUA VOORHEES HOSPITAL		3			3
TIMBER RIDGE LABORATORY			3	100%	3
TA LABCORP TAMPA			3	100%	3
NORTHSHORE UNIVERSITY HEALTHSYSTEM EVANSTON HOSPITAL LAB			3	100%	3
MONTEFIORE ST LUKE'S CORNWALL HOSPITAL		2	1	33%	3
LABCORP DIAGNOSTICS-MIAMI		2	1	33%	3
NORTH NAPLES HOSPITAL RESPIRATORY THERAPY DEPARTMENT			3	100%	3
VIRGINIA DIVISION OF CONSOLIDATED LABORATORIES			3	100%	3
MIAMI CANCER INSTITUTE			3	100%	3
NEW YORK STATE ELR - ORANGE REGIONAL MEDICAL CENTER LABORATORY		3			3
VA OUTPATIENT			3	100%	3
WAKEMED		1	2	67%	3
WESLEY CHAPEL INTERNAL MEDICINE AND PEDIATRICS			3	100%	3
VA GULF COAST VETERANS HEALTH CARE SYSTEM			3	100%	3
WOODHULL MEDICAL AND MENTAL HEALTH CTR		3			3
JACKSON SOUTH COMMUNITY HOSPITAL LAB			3	100%	3
MARSHALL MEDICAL CENTER SOUTH LAB		2	1	33%	3
FAMILY HEALTH CENTERS OF SWF LABS			3	100%	3
GULF COAST MEDICAL GROUP			3	100%	3
SAMARITAN MEDICAL CENTER		3			3
BAYCARE OUTREACH LABORATORY HOSPITAL			3	100%	3
JOHNS HOPKINS MEDICAL LABORATORIES		1	2	67%	3
LAKE WALES MEDICAL CENTER INC			3	100%	3
METHODIST MEDICAL CENTER		2	1	33%	3

COVID-19: testing by laboratory

Data through Aug 10, 2020 verified as of Aug 11, 2020 at 08:55 AM

Data in this report are provisional and subject to change.

The numbers in the table below represent the number for whom test results were received by the Department of Health. A person can be tested by more than one laboratory and can have both positive and negative results. **Therefore, the sum of the numbers in each column will be larger than the total number of people tested.**

Reporting lab	Inconclusive	Negative	Positive	Percent positive	Total
EISENHOWER ARMY MEDICAL CENTER			3	100%	3
EMERGENCY MEDICAL CENTER			3	100%	3
AIM LABORATORIES			3	100%	3
BRANCH MEDICAL CLINIC			3	100%	3
CENTRA CARE - LAKE NONA		1	2	67%	3
NAPHCARE, INC.			3	100%	3
KEY WEST URGENT CARE, INC		3			3
ALACHUA COUNTY HEALTH DEPARTMENT			3	100%	3
PHYSICIANS STAT			3	100%	3
FLORIDA HOSPITAL			3	100%	3
QUEST DIAGNOSTIC			3	100%	3
PUBLIC HEALTH LAB		3			3
ILLINOIS DEPARTMENT OF PUBLIC HEALTH			3	100%	3
MHHS All Lab Subsection		3			3
PENNSYLVANIA DEPARTMENT OF HEALTH BUREAU OF LABORATORIES			3	100%	3
PALMS WEST HOSPITAL			3	100%	3
JOE DIMAGGIO CHILDREN'S HOSPITAL		1	2	67%	3
CENTRAL FLORIDA HEALTH CARE INC			3	100%	3
NORTH BROWARD HOSPITAL DISTRICT HEALTHCARE FOR THE HOMELESS			3	100%	3
PINELLAS COUNTY HEALTH DEPARTMENT		2	1	33%	3
HEALTH CARE LABORATORY SERVICES			3	100%	3
INDIAN RIVER CHD VERO BEACH		2	1	33%	3
BAYFRONT HEALTH PUNTA GORDA			3	100%	3
ACCESS HEALTH CARE		2	1	33%	3
NEW YORK STATE ELR - LONG ISLAND JEWISH MED CTR		3			3
ST LUKES HOSPITAL LABORATORY		2	1	33%	3
CALHOUN LIBERTY HOSPITAL			3	100%	3
DORAL URGENT CARE			3	100%	3
NEW YORK STATE ELR - JACOBI MEDICAL CENTER		3			3
BARONESS ERLANGER HOSPITAL		3			3
QUATRACOR PLLC		3			3
BIODESIX, INC.		3			3
DOH-TAMPA BRANCH LABORATORY (MLK BLVD)			3	100%	3
MALABAR/ADVENT CENTRA CARE			3	100%	3
CENTRA CARE HUNTER'S CREEK			3	100%	3
CONEMAUGH MEMORIAL MEDICAL CENTER		2			2
COLLIER COUNTY HEALTH DEPT.			2	100%	2
FCHC (OB)-DARWIN SQUARE CTR.			2	100%	2
UNIVERSITY OF CHICAGO MEDICAL CENTER LAB			2	100%	2
INGENIOUS PERSONALIZED MEDICINE		2			2
SHELBY BAPTIST MEDICAL CENTER			2	100%	2
LEGACY LABORATORY SERVICES			2	100%	2
FLORIDA HEALTH CARE PLANS			2	100%	2
HEART OF FLORIDA HMA			2	100%	2
PREMIER MEDICAL LABORATORY			2	100%	2
HOME ACCESS HEALTH			2	100%	2
SSM HEALTH ST LOUIS MICROBIOLOGY LABORATORY		1	1	50%	2

COVID-19: testing by laboratory

Data through Aug 10, 2020 verified as of Aug 11, 2020 at 08:55 AM

Data in this report are provisional and subject to change.

The numbers in the table below represent the number for whom test results were received by the Department of Health. A person can be tested by more than one laboratory and can have both positive and negative results. **Therefore, the sum of the numbers in each column will be larger than the total number of people tested.**

Reporting lab	Inconclusive	Negative	Positive	Percent positive	Total
GEISINGER MEDICAL CENTER		2			2
ST. JOSEPH REGIONAL MEDICAL CENTER			2	100%	2
ERIE COUNTY MEDICAL CTR CLINICAL LABS		2			2
QUEST DIAGNOSTICS-OCALA-SE 3RD		2			2
Cleveland Clinic Weston			2	100%	2
CORAL GABLES HOSPITAL			2	100%	2
UNIVERSITY OF MIAMI			2	100%	2
INTERNAL MEDICINE ASSOCIATES-DUNELLON			2	100%	2
WHOLE CHILD PEDIATRICS			2	100%	2
WATAUGA MEDICAL CENTER		1	1	50%	2
WALGREENS #5317		2			2
GEORGIA DEPARTMENT OF PUBLIC HEALTH			2	100%	2
ALABAMA DEPARTMENT OF PUBLIC HEALTH			2	100%	2
HEALTH FIRST IBM-UX			2	100%	2
UNIVERSITY HOSPITAL			2	100%	2
LABCORP - STUART		1	1	50%	2
TANNER MEDICAL CENTER EAST AL		2			2
VIRTUA MEMORIAL HOSPITAL BURLINGTON COUNTY			2	100%	2
JACKSON LABORATORY OF GENOMIC MEDICINE		2			2
UNIVERSITY HOSPITAL OF BROOKLYN		2			2
MIDMICHIGAN MEDICAL CENTER			2	100%	2
MEDRITE			2	100%	2
BIO-REFERENCE LABORATORIES			2	100%	2
JOHN D. ARCHBOLD MEM. HOSPITAL			2	100%	2
ALTRU DIAGNOSTICS INC			2	100%	2
MINUTE CLINIC LLC #2216		2			2
LAKE MARY KIDS CENTRA CARE			2	100%	2
UT MEMPHIS UNIVERSITY HEALTH SERVICES			2	100%	2
BAY CARE LAB SERVICES/ST. ANTHONY'S HOSPITAL			2	100%	2
CELERION			2	100%	2
COASTAL MED URGENT CARE			2	100%	2
URGENT CARE TCMA			2	100%	2
UC CORAL GABLES			2	100%	2
ROCKEFELLER UNIVERSITY CLINICAL GENOMICS LABORATOR		2			2
BIO-TECH CLINICAL LABORATORIES			2	100%	2
CAPTAIN JAMES A. LOVELL FEDERAL HEALTHCARE CENTER			2	100%	2
ST CHARLES HOSPITAL LABORATORY		2			2
SCDHEC BUREAU OF LABORATORIES			2	100%	2
AMEERAH LABS			2	100%	2
ENGLEWOOD HOSPITAL AND MEDICAL CENTER			2	100%	2
OHIO DEPARTMENT OF HEALTH LABORATORY		2			2
NOT INDICATED			2	100%	2
QUEST DIAGNOSTICS INCORPORATED			2	100%	2
QUEENS HOSPITAL CENTER		2			2
BIRMINGHAM VAMC		1	1	50%	2
UCLA HEALTHCARE CLINICAL LABS			2	100%	2
UK HEALTHCARE			2	100%	2

COVID-19: testing by laboratory

Data through Aug 10, 2020 verified as of Aug 11, 2020 at 08:55 AM

Data in this report are provisional and subject to change.

The numbers in the table below represent the number for whom test results were received by the Department of Health. A person can be tested by more than one laboratory and can have both positive and negative results. **Therefore, the sum of the numbers in each column will be larger than the total number of people tested.**

Reporting lab	Inconclusive	Negative	Positive	Percent positive	Total
EXOSOME DIAGNOSTICS		2			2
ADVANCED URGENT CARE CENTER OF THE UPPER KEYS			2	100%	2
GUTHRIE MEDICAL GROUP LABORATORIES		2			2
CONNECTDX			2	100%	2
SIGNATURE CARE PFLUGERVILLE			2	100%	2
SHARP MEMORIAL HOSPITAL MICROBIOLOGY DEPT			2	100%	2
ST PETERSBURG PEDIATRICS-EAST BAY			2	100%	2
UNIVERSITY OF ALABAMA		2			2
IOWA DEPARTMENT OF PUBLIC HEALTH			2	100%	2
ST VINCENT'S CHILTON		1	1	50%	2
BFT LAB			2	100%	2
DEACONESS HOSPITAL			2	100%	2
JOHNSON CITY MEDICAL CENTER		1	1	50%	2
EXECUTIVE MEDICAL SERVICES		2			2
ACADIAN DIAGNOSTIC LABORATORIES		2			2
BETH ISRAEL DEACONESS MEDICAL CENTER			2	100%	2
LINCOLN DIAGNOSTIC LAB		2			2
VERMONT DEPARTMENT OF HEALTH LABORATORY		1	1	50%	2
UNIVERSITY OF WASHINGTON MEDICAL CENTER			2	100%	2
THOMAS LANGLEY			2	100%	2
GALEN BAYLOR EXTENSION		2			2
ADVENTHEALTH CENTRA CARE APOPKA			2	100%	2
CVS PHARMACY, INC DBA CVS/PHARMACY #10581		2			2
AMERICAN MEDICAL LABORATORIES			2	100%	2
AMERICAN FAMILY CARE- ORANGE BEACH			2	100%	2
ALLIANCE PEDIATRICS			2	100%	2
FLORIDA CLINICAL LABORATORY INC			2	100%	2
VIGILINT HEALTHCARE		1	1	50%	2
NEW YORK STATE ELR - ERIE COUNTY PUBLIC HEALTH CLINICAL		2			2
ALVERNO CLINICAL LABORATORIES			2	100%	2
MAYO			2	100%	2
MAILBOX DIAGNOSTICS		1	1	50%	2
ADVANCED MEDICAL CARE			2	100%	2
ALLIANCE LABS @LRMC			2	100%	2
AHSE ROP		2			2
PHYSICIANS LABORATORY SERVICES			2	100%	2
NEW YORK STATE ELR - COLUMBIA MEMORIAL HOSPITAL LABORATORY		2			2
TREASURE COAST COMMUNITY HEALTH			2	100%	2
PPD			2	100%	2
OHIO STATE UNIVERSITY MEDICAL CENTER			2	100%	2
QUEST DIAGNOSTICS-OCALA-SW HIGHWAY 200		2			2
NEBRASKA MEDICAL CENTER			2	100%	2
OKLAHOMA STATE DEPARTMENT OF HEALTH-PUBLIC HEALTH LABORATORY			2	100%	2
NEW YORK STATE DEPARTMENT OF HEALTH		1	1	50%	2
NEW YORK STATE ELR - BELLEVUE HOSPITAL CENTER DEPARTMENT		2			2
NEW YORK STATE ELR - AUBURN COMMUNITY HOSPITAL		2			2
OMNI			2	100%	2

COVID-19: testing by laboratory

Data through Aug 10, 2020 verified as of Aug 11, 2020 at 08:55 AM

Data in this report are provisional and subject to change.

The numbers in the table below represent the number for whom test results were received by the Department of Health. A person can be tested by more than one laboratory and can have both positive and negative results. **Therefore, the sum of the numbers in each column will be larger than the total number of people tested.**

Reporting lab	Inconclusive	Negative	Positive	Percent positive	Total
OMNICARE PHARMACY OF TEXAS 1, LP DBA OMNICARE		2			2
RUSH UNIVERSITY MEDICAL CENTER LABORATORY			2	100%	2
LABCORP PHOENIX			2	100%	2
SPARROW CENTRAL LAB			2	100%	2
RICHMOND UNIVERSITY MEDICAL CENTER		1	1	50%	2
NEW YORK STATE ELR - GLENS FALLS HOSPITAL DEPARTMENT OF PATHOLOGY		2			2
PREMIER LABORATORY SERVICES, LLC			2	100%	2
LABCORP - LEESBURG			2	100%	2
MEMORIAL SLOAN KETTERING CANCER CENTER		1	1	50%	2
NOVANT HEALTH INPATIENT CARE			2	100%	2
PRIMARY CARE OF THE TREASURE COAST			2	100%	2
LABCORP RARITAN		2			2
LEESBURG REGIONAL MEDICAL CENTER		1	1	50%	2
LABCORP - OHIO			2	100%	2
ON SLOW MEMORIAL HOSPITAL LABORATORY		2			2
MINUTECLINIC DIAGNOSTIC OF RHODE ISLAND, LLC #590		2			2
MADISON COUNTY MEMORIAL HOSP		1	1	50%	2
NEW YORK STATE ELR - NEW YORK PRESBYTERIAN-LOWER MANHATTAN		2			2
NEW YORK STATE ELR - LONG ISLAND JEWISH VALLEY STREAM		2			2
NLC LABS			2	100%	2
VRL EUROFINIS			2	100%	2
MONROE COUNTY HOSPITAL		2			2
KETTERING HEALTH			2	100%	2
SOUTH GEORGIA MEDICAL CENTER			2	100%	2
MONTANA PUBLIC HEALTH LAB			2	100%	2
NOVANT HEALTH GOHEALTH URGENT CARE-HARRISBURG			2	100%	2
SARASOTA MEMORIAL MEDICAL URGENT CARE CENTER			2	100%	2
TUFTS MEDICAL CENTER			1	100%	1
ST. LUCIE COUNTY HEALTH DEPARTMENT		1			1
ST. LUKE'S HOSPITAL - BETHLEHEM CAMPUS		1			1
HANCOCK REGIONAL HOSPITAL		1			1
BIODORON LABORATORIES			1	100%	1
KETTERING MEDICAL CENTER			1	100%	1
ORMC-ARDEN/EOI			1	100%	1
PATHLINE			1	100%	1
JEFFERSON COUNTY HEALTH DEPARTMENT-MONTICELLO		1			1
KENTUCKY CABINET FOR HEALTH AND FAMILY SERVICES			1	100%	1
LOYOLA UNIVERSITY MEDICAL CENTER LABORATORY			1	100%	1
GSM OCED Subsection			1	100%	1
ALABAMA REFERENCE LAB			1	100%	1
LABCORP HOUSTON			1	100%	1
BAYONET POINT HOSPITAL LAB			1	100%	1
LEESBURG FAMILY MEDICINE		1			1
DALLAS MEDICAL CENTER			1	100%	1
DOCTOR'S WALK-IN CLINIC / QUEST DIAGNOSTICS			1	100%	1
BRISTOL REGIONAL MEDICAL CENTER			1	100%	1
ST. MARY MEDICAL CENTER		1			1

COVID-19: testing by laboratory

Data through Aug 10, 2020 verified as of Aug 11, 2020 at 08:55 AM

Data in this report are provisional and subject to change.

The numbers in the table below represent the number for whom test results were received by the Department of Health. A person can be tested by more than one laboratory and can have both positive and negative results. **Therefore, the sum of the numbers in each column will be larger than the total number of people tested.**

Reporting lab	Inconclusive	Negative	Positive	Percent positive	Total
GEORGE SAFRAN MD PC		1			1
CHATSWORTH ASSISTED LIVING COMMUNITY AT PGA NATIONAL			1	100%	1
WILLIAM A HINTON STATE LABORATORY INSTITUTE			1	100%	1
CELAL GUROL ERBAY, MD			1	100%	1
PERDIDO URGENT CARE			1	100%	1
DOCTOR'S IN-HOUSE LAB/COMMUNITY HEALTH CENTERS OF PINELLAS -PINELLAS P			1	100%	1
DUKE HEALTH REGIONAL HOSPITAL			1	100%	1
PEDIATRIC HEALTHCARE ALLIANCE			1	100%	1
DHEC - S.C PUBLIC HEALTH LAB			1	100%	1
NORTH FLORIDA PEDIATRICS JASPER			1	100%	1
QUEST - HOUSTON LAB			1	100%	1
PRISMA HEALTH TUOMEY LABORATORY			1	100%	1
CLEVELAND CLINIC OHIO LABORATORIES			1	100%	1
NORTH CAROLINA STATE LABORATORY OF PUBLIC HEALTH, SPECTRUM LAB NETWORK			1	100%	1
MEDICAL CENTER AT OCEAN REEF			1	100%	1
GENETIC ASSAYS INC			1	100%	1
FLORIDA DEPARTMENT OF HEALTH IN MIAMI DADE COUNTY			1	100%	1
NORTH RIVER FAMILY HEALTH CENTER			1	100%	1
ORANGE COUNTY HEALTH DEPT			1	100%	1
ELITE CARE			1	100%	1
FALMOUTH BY THE SEA			1	100%	1
US LABORATORIES			1	100%	1
OHIO DEPARTMENT OF HEALTH			1	100%	1
SOUTHWEST REGIONAL PCR LABORATORY			1	100%	1
PORT ST LUCIE REHABILITATION AND HEALTHCARE			1	100%	1
SOUTH LAKE FAMILY HEALTH CENTER			1	100%	1
SUNY AT STONY BROOK			1	100%	1
SACRED HEART MEDICAL GROUP			1	100%	1
LABCORP - LADY LAKE			1	100%	1
SCRIPPS CLINIC MEDICAL			1	100%	1
RIVERSIDE METHODIST HOSPITAL LAB			1	100%	1
LABCORP - PALM BEACH GARDENS			1	100%	1
BERKSHIRE MEDICAL CENTER			1	100%	1
BAPTIST HEALTH URGENT CARE AT KENDALL LAKES			1	100%	1
BMC/JACSONVILLE		1			1
OMNICARE PHARMACY OF TEXAS 1, LP		1			1
PALM BEACH COUNTY HEALTH DEPARTMENT LABORATORY			1	100%	1
WASHINGTON STATE DEPARTMENT OF HEALTH PUBLIC HEALTH LABORATORIES			1	100%	1
SEMINOLE COUNTY HEALTH DEPARTMENT			1	100%	1
PARKWAY REGIONAL MEDICAL CENTER LAB			1	100%	1
AMD			1	100%	1
ADVANCED MEDICAL LABORATORIES (AML)			1	100%	1
HELIX DIAGNOSTICS			1	100%	1
HAWAII DEPARTMENT OF HEALTH LAB			1	100%	1
KANA MEDICAL			1	100%	1
SHANDS AT LAKE SHORE LAB			1	100%	1
ST.ELIZABETH HEALTH CENTER	1				1

COVID-19: testing by laboratory

Data through Aug 10, 2020 verified as of Aug 11, 2020 at 08:55 AM

Data in this report are provisional and subject to change.

The numbers in the table below represent the number for whom test results were received by the Department of Health. A person can be tested by more than one laboratory and can have both positive and negative results. **Therefore, the sum of the numbers in each column will be larger than the total number of people tested.**

Reporting lab	Inconclusive	Negative	Positive	Percent positive	Total
THE UNIVERSITY OF VERMONT MEDICAL CENTER		1			1
UF KANAPAHA LAB BEAKER		1			1
ECLRS			1	100%	1
COASTAL MEDICAL LAB			1	100%	1
SCIENCE CARE			1	100%	1
PARROTT MEDICAL CLINIC			1	100%	1
PROGENESIS INC			1	100%	1
VA HOSPITAL PATH & LAB			1	100%	1
BAYCARE ALLIANT HOSPITAL			1	100%	1
QUEST ELR		1			1
ST JOSEPHS CHILDRENS HOSPITAL OUTREACH			1	100%	1
ACCESS HEALTH CARE PHYSICIANS			1	100%	1
RIVERVIEW REGIONAL MEDICAL CENTER		1			1
AFC URGENT CARE			1	100%	1
CAROMONT HEALTH			1	100%	1
Viracor Eurofins			1	100%	1
VITAE DIAGNOSTICS			1	100%	1
APS-SUMMIT CARE PHARMACY, LLC DBA OMNICARE		1			1
VIDANT MEDICAL CENTER			1	100%	1
MAGNOLIA PEDIATRICS			1	100%	1
ACCESSLAB		1			1
NEW YORK STATE ELR - ST BARNABAS HOSPITAL		1			1
MID FLORIDA CLINICAL LABORATORY			1	100%	1
WILMINGTON VA MEDICAL CENTER			1	100%	1
BEAUMONT REFERENCE LABORATORY			1	100%	1
UNIVERSITY OF KANSAS MEDICAL CENTER			1	100%	1
SUNRISE DIAGNOSTIC LABORATORY			1	100%	1
SMITH NORTHVIEW HOSPITAL LAB			1	100%	1
UNIVERSITY OF FLORIDA			1	100%	1
UNK			1	100%	1
VA OUTPATIENT CLINIC			1	100%	1
VALLEY HOSPITAL MEDICAL CENTER		1			1
JRS LABORATORY			1	100%	1
MINUTECLINIC DIAGNOSTIC OF TEXAS		1			1
URGENT CARE WEST CLINIC			1	100%	1
DELAWARE DIAGNOSTICS LABS			1	100%	1
CONEY ISLAND HOSPITAL		1			1
WEST			1	100%	1
MONTANA DEPARTMENT OF PUBLIC HEALTH & HUMAN SERVICES			1	100%	1
MPG JACKSONVILLE ATLANTIC BLVD		1			1
CATHOLIC HEALTH SYSTEM DEPT LABORATORY		1			1
CAH ACQUISITION COMPANY 11 LLC			1	100%	1
CITRUS PARK			1	100%	1
SKY RIDGE MEDICAL CENTER - MICRO			1	100%	1
WARD MEMORIAL HOSPITAL		1			1
MEDICAL ARTS LABORATORY			1	100%	1
MINUTECLINIC DIAGNOSTIC OF TEXAS, LLC		1			1

COVID-19: testing by laboratory

Data through Aug 10, 2020 verified as of Aug 11, 2020 at 08:55 AM

Data in this report are provisional and subject to change.

The numbers in the table below represent the number for whom test results were received by the Department of Health. A person can be tested by more than one laboratory and can have both positive and negative results. **Therefore, the sum of the numbers in each column will be larger than the total number of people tested.**

Reporting lab	Inconclusive	Negative	Positive	Percent positive	Total
ACL LABORATORIES INDUSTRIAL TOXICOLOGY			1	100%	1
LABCORP - JACKSONVILLE			1	100%	1
GIFFORD MEMORIAL HOSPITAL		1			1
FLORIDA DEPARTMENT OF HEALTH PALM BEACH COUNTY			1	100%	1
FLORIDA CLINICAL LABORATORY - BIOREFERENCE LABORATORIES			1	100%	1
FLORIDA HOSPITAL LAB			1	100%	1
VA OUT PATIENT CENTER			1	100%	1
SOUTHEAST GEORGIA HEALTH SYSTEM			1	100%	1
THE HEART HOSPITAL BAYLOR PLANO			1	100%	1
TIEHH BIOTERRORISM RESPONSE LAB			1	100%	1
TENNESSEE DOH - KNOXVILLE			1	100%	1
TEXAS DEPARTMENT OF STATE HEALTH SERVICES			1	100%	1
TRUMAN MEDICAL CENTER - HOSPITAL HILL			1	100%	1
BAYLOR COLLEGE OF MEDICINE			1	100%	1
BAYCARE OUTREACH LAB			1	100%	1
UNITED CLINICAL LABORATORIES			1	100%	1
UNITED LABORATORY SERVICE			1	100%	1
BAYLOR ESOTERIC AND MOLECULAR LAB			1	100%	1
BLOUNT MEMORIAL HOSPITAL		1			1
BLOOD SYSTEMS LABORATORIES			1	100%	1
SPECTOR SCIENTIFIC LAB			1	100%	1
ST FRANCIS			1	100%	1
Mt Sinai Aventura			1	100%	1
SV MOBILE HEALTH			1	100%	1
BEEBE MEDICAL CENTER LABORATORY		1			1
BioReference Laboratories, Inc			1	100%	1
State Lab Unspecifd			1	100%	1
LAB CORP PHOENIX			1	100%	1
KANSAS DEPARTMENT OF HEALTH			1	100%	1
ADVANCED URGENT CARE OF MARATHON			1	100%	1
LABCORP - ORLANDO		1			1
ADVENTHEALTH CENTRA CARE WESLEY CHAPEL			1	100%	1
HIGHLANDS CLINICAL LABORATORY			1	100%	1
MD 365 MEDICAL CARE PLLC		1			1
LAKEVIEW REGIONAL HOSPITAL			1	100%	1
JOHN D. ARCHBOLD MEMORIAL HOSPITAL			1	100%	1
LABCORP KANSAS CITY			1	100%	1
BEAUFORT MEMORIAL			1	100%	1
INTERMOUNTAIN CENTRAL LAB			1	100%	1
MIAMI BEACH URGENT CARE			1	100%	1
BEAUMONT HOSPITAL, GROSSE POINTE			1	100%	1
REFERENCE LABORATORY			1	100%	1
ATHENS LIMESTONE HOSPITAL		1			1
NAVAL BRANCH MEDICAL CLINIC			1	100%	1
BAPTIST HEALTH MEDICAL CENTER			1	100%	1
BAYFRONT MEDICAL			1	100%	1
BASCOM PALMER-MICRO LAB			1	100%	1

COVID-19: testing by laboratory

Data through Aug 10, 2020 verified as of Aug 11, 2020 at 08:55 AM

Data in this report are provisional and subject to change.

The numbers in the table below represent the number for whom test results were received by the Department of Health. A person can be tested by more than one laboratory and can have both positive and negative results. **Therefore, the sum of the numbers in each column will be larger than the total number of people tested.**

Reporting lab	Inconclusive	Negative	Positive	Percent positive	Total
MEMORIAL HERMANN CONSOLIDATED LABORATORY SERVICES			1	100%	1
CGH MEDICAL CENTER			1	100%	1
ONEIDA HEALTHCARE CENTER		1			1
PHELPS HOSPITAL LABORATORY		1			1
DSI LABORATORIES-NAPLES-7TH			1	100%	1
NORTHSIDE HOSPITAL DULUTH			1	100%	1
BAPTIST ER TOWN CTR			1	100%	1
CAROLINAS HEALTHCARE SYSTEM LAB			1	100%	1
CBC LAB			1	100%	1
NORTHWESTERN MEMORIAL HOSPITAL			1	100%	1
NORTHERN WESTCHESTER HOSPITAL LABORATORY		1			1
NOT GIVEN			1	100%	1
FLORIDA HOSPITAL KISSIMMEE			1	100%	1
HARLEM HOSPITAL CENTER		1			1
NORTH BROWARD MEDICAL CENTER			1	100%	1
PEDIATRIC ASSOCIATES - JACKSONVILLE			1	100%	1
EDGAR PRICE FAMILY & CHILDREN HEALTHCARE CENTER			1	100%	1
MEDSTAR HARBOR HOSPITAL			1	100%	1
MEDICAL CLINIC OF HOUSTON			1	100%	1
PALM SPRINGS GENERAL HOSPITAL			1	100%	1
PIEDMONT HOSPITAL LAB			1	100%	1
UTMB PATHOLOGY CLINICAL SERVICES LABORATORY			1	100%	1
MISSOURI DEPARTMENT OF HEALTH AND SENIOR SERVICES - STATE PH LAB		1			1
UNIVERSITY OF MISSOURI HEALTH CARE			1	100%	1
METRO KNOXVILLE HMA		1			1
UNIVERSITY HOSPITALS OF CLEVELAND			1	100%	1
NORTH SHORE HEMATOLOGY-ONCOLOGY ASSOCIATES, PC		1			1
NORTHWEST FLORIDA CLINICAL LAB			1	100%	1
VIRACOR			1	100%	1
INTERMOUNTAIN MEDICAL CENTER			1	100%	1
INDIAN RIVER CLINICAL LABORATORY, INC.		1			1
LABCORP SOUTH CHARLESTON			1	100%	1
MEMORIAL HEALTH UNIVERSITY MEDICAL CENTER			1	100%	1
MD NOW URGENT CARE CENTER INC.			1	100%	1
MARYLAND DEPARTMENT OF HEALTH AND MENTAL HYGIENE			1	100%	1
MARINA DEL REY HOSPITAL LAB			1	100%	1
UNITED HEALTHCARE			1	100%	1
MERCY HEALTH—MUSKEGON		1			1
SUNY UPSTATE MEDICAL UNIVERSITY			1	100%	1
LABCORP LAFAYETTE		1			1
TRINITAS REGIONAL MEDICAL CENTER			1	100%	1
DOCTORS CLINICAL LABORATORY, INC			1	100%	1
DERMDX, DIV OF AURORA DIAGNOSTICS/BERNHARDT LAB		1			1
LATE HOURS URGENT CARE			1	100%	1
SMITH KLINE			1	100%	1
EAST TENNESSEE STATE UNIVERSITY		1			1
MARCO ISLAND HOSPITAL INC D/B/A			1	100%	1

COVID-19: testing by laboratory

Data through Aug 10, 2020 verified as of Aug 11, 2020 at 08:55 AM

Data in this report are provisional and subject to change.

The numbers in the table below represent the number for whom test results were received by the Department of Health. A person can be tested by more than one laboratory and can have both positive and negative results. **Therefore, the sum of the numbers in each column will be larger than the total number of people tested.**

Reporting lab	Inconclusive	Negative	Positive	Percent positive	Total
CHARLOTTE CHD PORT CHARLOTTE		1			1
CLIFTON-FINE HOSPITAL LABORATORY		1			1
COMMONWEALTH OF MASSACHUSETTS			1	100%	1
MAGNOLIA ADULT, LLC			1	100%	1
GRAND VIEW HOSPITAL			1	100%	1
PEACHEALTH LABORATORIES		1			1
HEALTH ALLIANCE			1	100%	1
SPRING HILL REGIONAL HOSPITAL			1	100%	1
WELLNOW URGENT CARE		1			1
EXPRESS GENE MOLECULAR DIAGNOSTICS LABORATORY			1	100%	1
ELMHURST MEMORIAL HOSPITAL			1	100%	1
SONIC REFERENCE LABORATORY			1	100%	1
LABCORP-PORT ST.LUCIE		1			1
GENETRAIT LABORATORIES			1	100%	1
REGIONAL MEDICAL LABORATORY			1	100%	1
PRORENATA LABS			1	100%	1
COCOA BEACH/ADVENT CENTRA		1			1
LabCorp L#09258090 M#09258105			1	100%	1
DEPARTMENT OF HEALTH AND HUMAN SERVICES DIVISION OF BEHAVIORAL HEALTH		1			1
YORK HOSPITAL - LABORATORY			1	100%	1
CALIFORNIA PUBLIC HEALTH LABORATORY			1	100%	1
BIOMERIEUX			1	100%	1
LAKEWOOD RANCH ER 24/7			1	100%	1
CFCH - FROSTPROOF			1	100%	1
CELEBRATION HOSPITAL			1	100%	1
Lourdes Hospital			1	100%	1
VELOCITY CARE			1	100%	1
GEORGETOWN URGENT CARE			1	100%	1
HARDIN MEMORIAL HOSPITAL - HEARTLAND PATHOLOGY CONSULTANTS			1	100%	1
UW HOSPITAL AND CLINICS			1	100%	1
Walker BaptistMedCtr			1	100%	1
OSWEGO HOSPITAL LABORATORY		1			1
FLORIDA HOSPITAL ALTAMONTE			1	100%	1
FUNGAL REFERENCE LABORATORY		1			1
FORT SANDERS REGIONAL LABORATORY		1			1
LABCORP - HOLLYWOOD			1	100%	1
LABCORP - DAYTONA BEACH			1	100%	1
ADVANCED LABORATORY SERVICES			1	100%	1
MEDONE URGENT CARE			1	100%	1
ROBERT WOOD JOHNSON HOSPITAL			1	100%	1
WELLINGTON WEST 100176			1	100%	1
HARTFORD HOSPITAL ANCILLARY LAB		1			1
ILLINOIS DEPT OF PUBLIC HEALTH LABS			1	100%	1
WEST PACIFIC MEDICAL LABORATORY			1	100%	1
NEW YORK CITY DEPARTMENT OF HEALTH			1	100%	1
MARION COUNTY HEALTH DEPARTMENT			1	100%	1
LABCORP-CRYSTAL RIVER			1	100%	1

COVID-19: testing by laboratory

Data through Aug 10, 2020 verified as of Aug 11, 2020 at 08:55 AM

Data in this report are provisional and subject to change.

The numbers in the table below represent the number for whom test results were received by the Department of Health. A person can be tested by more than one laboratory and can have both positive and negative results. **Therefore, the sum of the numbers in each column will be larger than the total number of people tested.**

Reporting lab	Inconclusive	Negative	Positive	Percent positive	Total
RIVIERA BEACH HEALTH CENTER LAB			1	100%	1
QUEST DIAGNOSTICS-WEST HILLS		1			1
RIVERSIDE MEDICAL GROUP		1			1
ARNOLD PALMER HOSPITAL LABORATORY			1	100%	1
ARKANSAS DEPARTMENT OF HEALTH			1	100%	1
MEDICAL CENTER ENTERPRISE			1	100%	1
BAYCARE MEDICAL GROUP			1	100%	1
BAPTIST HEALTH EXPRESS CARE AT KEY BISCAYNE			1	100%	1
UNKNOWN - MI			1	100%	1
MONTEFIORE NYACK HOSPITAL AFFILIATED LABORATORY		1			1
TAMPA		1			1
EXCEL URGENT CARE OF NJ			1	100%	1
NEW YORK STATE ELR - MONTEFIORE MEDICAL CENTER LABORATORIES - WEILER			1	100%	1
STANLY REGIONAL MEDICAL CENTER			1	100%	1
MUNSON MEDICAL CENTER			1	100%	1
UAB			1	100%	1
TIMPANOGOS REGIONAL HOSPITAL			1	100%	1
DOCS URGENT CARE			1	100%	1
CQUENTIA NGS, LLC			1	100%	1
SEA LEVEL LABS			1	100%	1
MINUTE CLINIC DIAGNOSTIC OF VIRGINIA		1			1
SANFORD SOUTH UNIVERSITY		1			1
REMISE OCCUPATIONAL HEALTH SOLUTIONS INC			1	100%	1
AZALEA HEALTH			1	100%	1
SOUTHWEST FLORIDA DIVISION LAB			1	100%	1
HEALTH NETWORK LABORATORIES		1			1
SENTARA NORFOLK GENERAL HOSPITAL CENTRAL LAB			1	100%	1
MINUTECLINIC DIAGNOSTIC			1	100%	1
SANFORD REGIONAL HOSPITAL WORTHINGTON		1			1
ALLIANCE LABORATORY SERVICES			1	100%	1
AFFILIATED LABORATORIES INC			1	100%	1
WEST VIRGINIA UNIVERSITY HOSPITALS			1	100%	1
APPALACHIAN REGIONAL HEALTHCARE SYSTEM		1			1
WEST KENDALL HOSPITAL			1	100%	1
HOLY NAME MEDICAL CENTER		1			1
MCH PHYSICIANS GROUP			1	100%	1
HOUSTON HEALTH DEPARTMENT - BUREAU OF LABORATORY SERVICES			1	100%	1
ADVENTIST HINSDALE HOSPITAL LABORATORY			1	100%	1
THE CHILDREN'S HOSPITAL OF PHILADELPHIA		1			1
UNIVERSITY LAB			1	100%	1
COLORADO DEPARTMENT OF HEALTH LABORATORY SERVICES DIVISION			1	100%	1
COMPUNET CLINICAL LAB			1	100%	1
NEW YORK STATE ELR - MERCY MEDICAL CENTER		1			1
MOLECULAR PATHOLOGY LABORATORY			1	100%	1
BROOKSVILLE REGIONAL HOSPITAL			1	100%	1
BARDMOOR LABORATORY			1	100%	1
VA HOSPITAL			1	100%	1

COVID-19: testing by laboratory

Data through Aug 10, 2020 verified as of Aug 11, 2020 at 08:55 AM

Data in this report are provisional and subject to change.

The numbers in the table below represent the number for whom test results were received by the Department of Health. A person can be tested by more than one laboratory and can have both positive and negative results. **Therefore, the sum of the numbers in each column will be larger than the total number of people tested.**

Reporting lab	Inconclusive	Negative	Positive	Percent positive	Total
MHS LAB		1			1
VA GREATER LOS ANGELES HEALTH CARE SYSTEM			1	100%	1
Total	27,130	4,658,471	690,302	13%	5,375,903