

Coronavirus: summary of persons being monitored, persons under investigation, and cases

Data through Jun 30, 2020 verified as of Jul 1, 2020 at 09:25 AM

Data in this report are provisional and subject to change.

Monitored persons: people the Florida Department of Health was notified of for possible monitoring because they are a contact of a case, traveled from China, or were identified by the Centers for Disease Control and Prevention (CDC) as a part of a airline/ship contact investigation

Total reports	69,516
Total persons of high, medium, or unknown risk	65,827
High/medium/unknown risk still being monitored	17,110

Persons tested: includes test results received by the Department of Health from the state public health laboratory (BPHL), as well as commercial and hospital laboratories

Total tested	1,981,915
Positive	158,997
Negative	1,821,357
Inconclusive	1,561
Awaiting testing	2,094

Confirmed cases

Total cases	158,997
Florida residents	156,288
Non-Florida residents	2,709

Type of testing

Florida residents	
Confirmed by BPHL/CDC	7,095
Positive by commercial/hospital lab	149,193
Non-Florida residents	
Confirmed by BPHL/CDC	152
Positive by commercial/hospital lab	2,557

Characteristics

Florida residents hospitalized	14,825
Florida resident deaths	3,550
Non-Florida resident deaths	100

Hospitalized counts include anyone who was hospitalized at some point during their illness. It does not reflect the number of people currently hospitalized.

More information on deaths identified through death certificate data is available on the National Center for Health Statistics website at www.cdc.gov/nchs/nvss/vsrr/COVID19/index.htm.

Risk factors for Florida residents

Traveled	2,527
Contact with confirmed case	53,823
Traveled and contact with confirmed case	2,483
Neither	97,455
No travel and no contact	19,069
Travel is unknown	60,278
Contact is unknown	24,722
Contact is pending	51,974

Travel can be unknown and contact can be unknown or pending for the same case, these numbers will sum to more than the "neither" total.

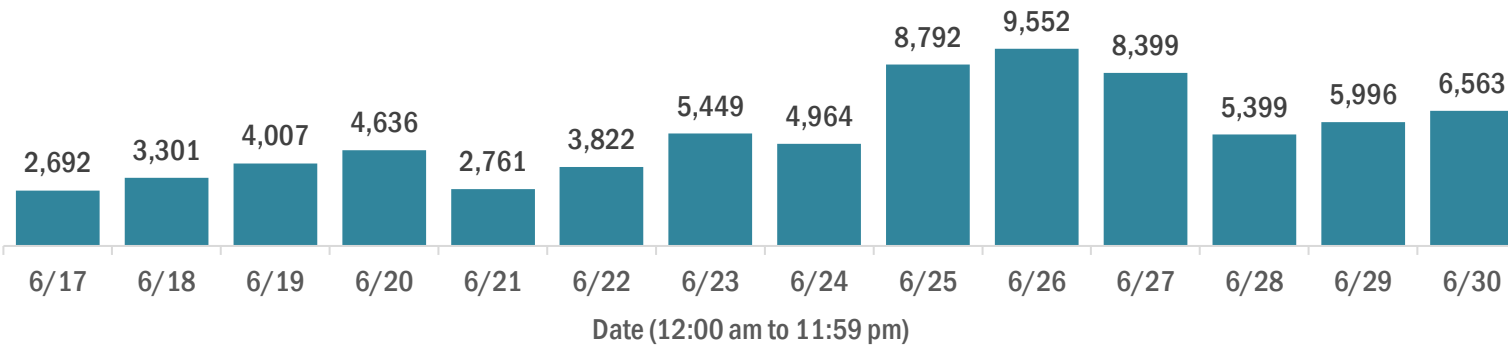
Coronavirus: cases and laboratory testing over time

Data through Jun 30, 2020 verified as of Jul 1, 2020 at 09:25 AM

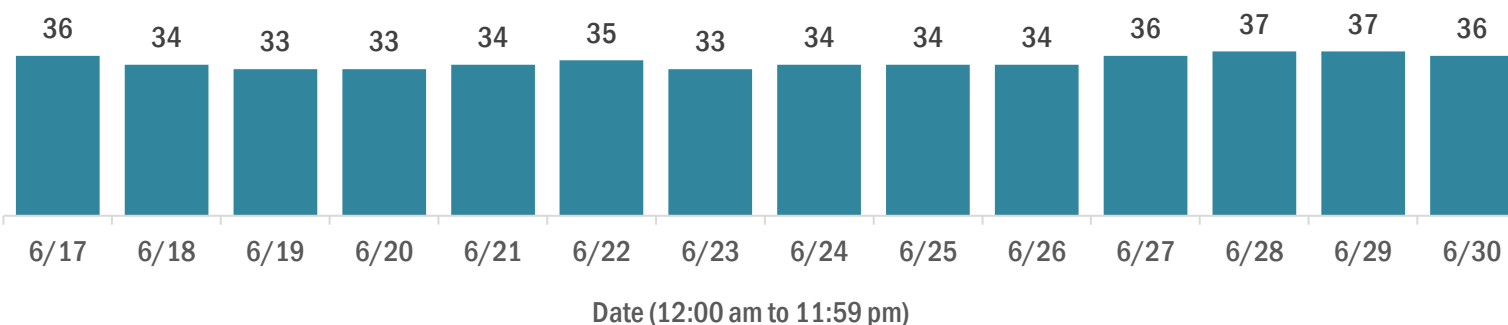
Data in this report are provisional and subject to change.

Cases confirmed in Florida residents per day for the past 2 weeks

Number of cases per day



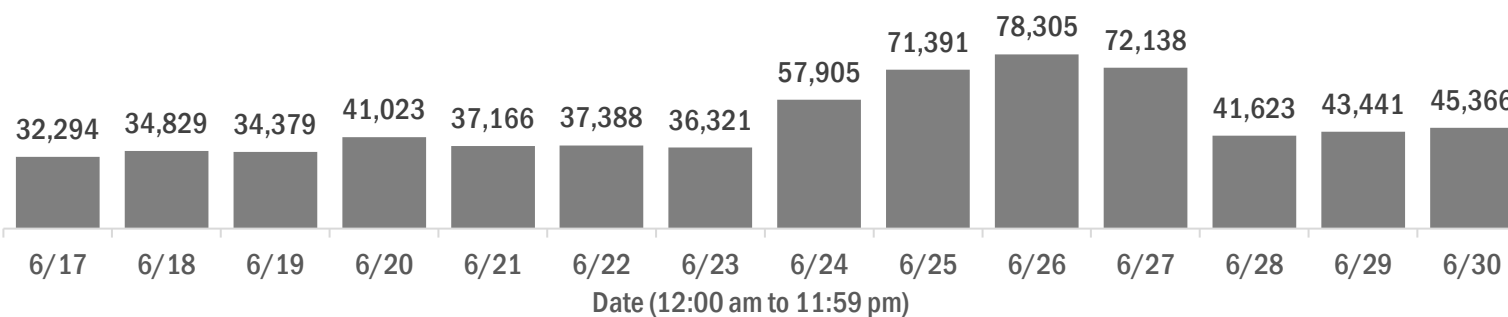
Median age of cases by day



Laboratory testing for Florida residents and non-Florida residents over the past 2 weeks

Number of people tested per day

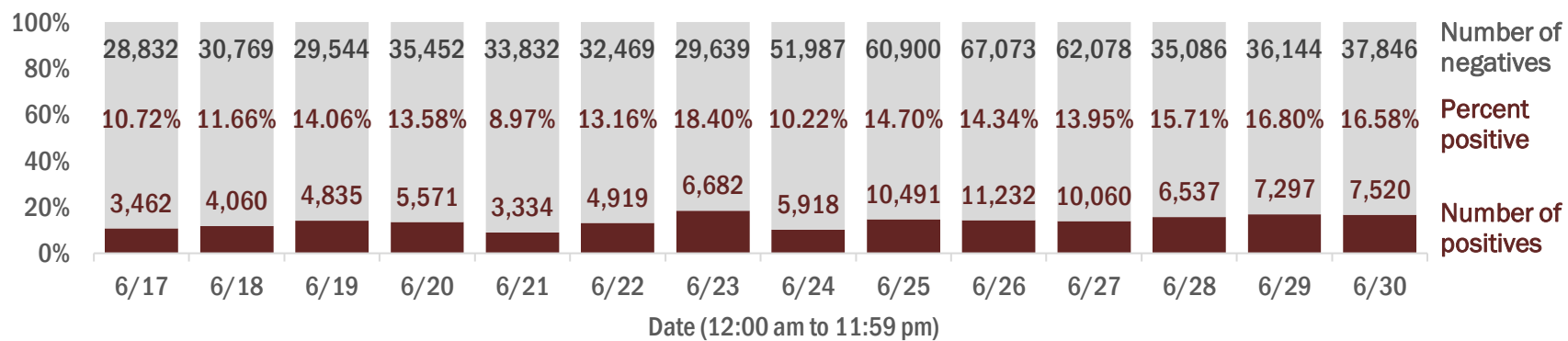
These counts include the number of people for whom the department received laboratory results by day. People tested on multiple days will be included for each day a new result was received. A person is only counted once for each day they are tested, regardless of whether multiple specimens are tested or multiple results are received.



Number and percent of positive labs

The percent of positive results ranged from 8.97% to 18.40% over the past 2 weeks and was 16.58% yesterday.

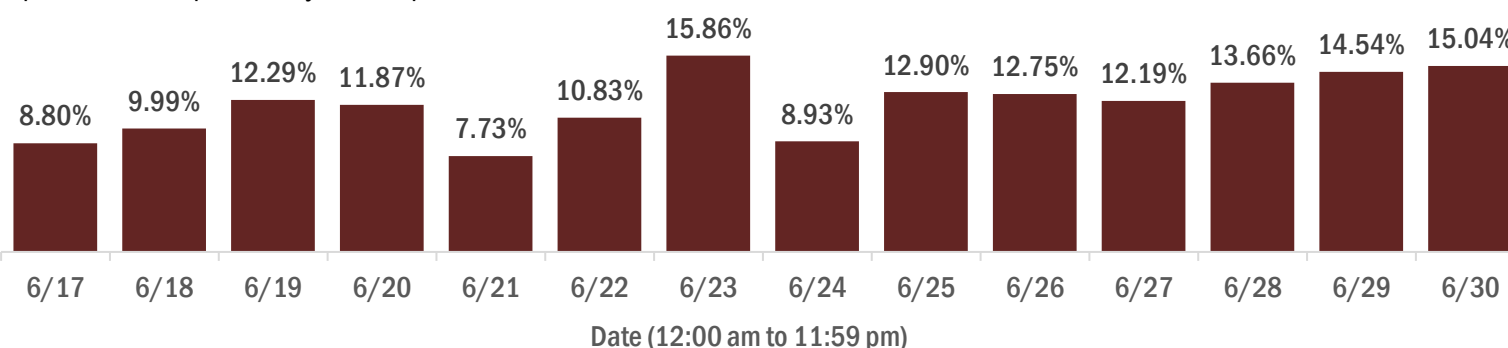
These counts include the number of people for whom the department received laboratory results by day. People tested on multiple days will be included for each day a new result was received. A person is only counted once for each day they are tested, regardless of whether multiple specimens are tested or multiple results are received. If a person has a positive specimen and a negative specimen in the same day, only the positive result is counted.



Percent positivity for new cases

The percent of positive results ranged from 7.73% to 15.86% over the past 2 weeks and was 15.04% yesterday.

This percent is the number of people who test positive for the first time divided by all the people tested that day, excluding people who have previously tested positive.



Coronavirus: characteristics of 156,288 Florida resident cases

Data through Jun 30, 2020 verified as of Jul 1, 2020 at 09:25 AM

Data in this report are provisional and subject to change.

Age group	Cases		Hospitalizations		Deaths	
0-4 years	2,361	2%	65	0%	0	0%
5-14 years	4,748	3%	57	0%	0	0%
15-24 years	24,596	16%	329	2%	5	0%
25-34 years	31,716	20%	894	6%	20	1%
35-44 years	24,990	16%	1,363	9%	64	2%
45-54 years	23,744	15%	1,969	13%	136	4%
55-64 years	19,441	12%	2,553	17%	316	9%
65-74 years	12,091	8%	2,868	19%	740	21%
75-84 years	7,434	5%	2,630	18%	993	28%
85+ years	4,944	3%	2,097	14%	1,276	36%
Unknown	223	0%	0	0%	0	0%
Total	156,288		14,825		3,550	

Gender	Cases	
Male	77,119	49%
Female	78,825	50%
Unknown	344	0%
Total	156,288	

Ethnicity	Cases		Hospitalizations		Deaths	
Hispanic	47,002	30%	5,187	35%	906	26%
Non-Hispanic	56,884	36%	8,927	60%	2,415	68%
Unknown	52,402	34%	711	5%	229	6%
Total	156,288		14,825		3,550	

Race, ethnicity	Cases		Hospitalizations		Deaths	
White	68,943	44%	8,886	60%	2,445	69%
Hispanic	33,601	21%	3,852	26%	742	21%
Non-Hispanic	30,323	19%	4,786	32%	1,608	45%
Unknown ethnicity	5,019	3%	248	2%	95	3%
Black	25,266	16%	3,907	26%	749	21%
Hispanic	1,257	1%	199	1%	22	1%
Non-Hispanic	22,017	14%	3,617	24%	704	20%
Unknown ethnicity	1,992	1%	91	1%	23	1%
Other	14,832	9%	1,605	11%	238	7%
Hispanic	8,984	6%	1,039	7%	127	4%
Non-Hispanic	3,538	2%	485	3%	96	3%
Unknown ethnicity	2,310	1%	81	1%	15	0%
Unknown race	47,247	30%	427	3%	118	3%
Hispanic	3,160	2%	97	1%	15	0%
Non-Hispanic	1,006	1%	39	0%	7	0%
Unknown ethnicity	43,081	28%	291	2%	96	3%
Total	156,288		14,825		3,550	

Hospitalization counts include anyone who was hospitalized at some point during their illness. It does not reflect the number of people currently hospitalized. **Other race** includes any person with a race of American Indian/Alaskan native, Asian, native Hawaiian/Pacific Islander, or other.

Coronavirus: deaths in Florida residents and staff of long-term care facilities

Data through Jun 30, 2020 verified as of Jul 1, 2020 at 09:25 AM

Data in this report are provisional and subject to change.

For current cases in residents or staff of long-term care facilities, please visit: <https://floridahealthcovid19.gov/>

County	Deaths	Percentage	County	Deaths	Percentage	County	Deaths	Percentage
Dade	514	28%	Osceola	9	0%	Monroe	1	0%
Palm Beach	224	12%	Walton	9	0%	Nassau	1	0%
Broward	160	9%	Indian River	8	0%	St. Johns	1	0%
Pinellas	131	7%	Orange	8	0%	Sumter	1	0%
Lee	115	6%	Calhoun	6	0%	Total	1,867	
Hillsborough	91	5%	Seminole	6	0%			
Manatee	87	5%	Gadsden	4	0%			
Polk	67	4%	Jefferson	4	0%			
Sarasota	63	3%	Lake	4	0%			
Charlotte	48	3%	Leon	4	0%			
Collier	38	2%	Okaloosa	4	0%			
Volusia	36	2%	Baker	3	0%			
Duval	34	2%	Brevard	3	0%			
Escambia	34	2%	Madison	3	0%			
St. Lucie	26	1%	Marion	3	0%			
Clay	24	1%	Bradford	2	0%			
Suwannee	20	1%	Putnam	2	0%			
Hendry	18	1%	Citrus	1	0%			
Martin	12	1%	Desoto	1	0%			
Pasco	12	1%	Hardee	1	0%			
Washington	12	1%	Hernando	1	0%			
Alachua	10	1%	Levy	1	0%			

Note: cases are summarized by the county of usual residence. Residents and staff may be cases associated with facilities that are not in their county of usual residence, resulting in cases being included below for counties that do not have facilities with known cases.

Coronavirus: characteristics of 158,997 cases

Data through Jun 30, 2020 verified as of Jul 1, 2020 at 09:25 AM

Data in this report are provisional and subject to change.

Tables below include cases in Florida residents and non-Florida residents.

All 67 Florida counties have confirmed cases:

County	FL resident		Non-FL resident	Total
Dade	37,418	24%	543	37,961
Broward	15,833	10%	322	16,155
Palm Beach	14,300	9%	147	14,447
Hillsborough	11,376	7%	89	11,465
Orange	10,660	7%	214	10,874
Pinellas	6,788	4%	73	6,861
Duval	6,369	4%	111	6,480
Lee	5,751	4%	118	5,869
Collier	4,290	3%	86	4,376
Polk	4,029	3%	19	4,048
Manatee	2,996	2%	19	3,015
Seminole	2,669	2%	13	2,682
Volusia	2,202	1%	17	2,219
Osceola	2,107	1%	57	2,164
Pasco	2,119	1%	14	2,133
Martin	2,096	1%	16	2,112
Escambia	1,692	1%	354	2,046
Brevard	1,946	1%	16	1,962
St. Lucie	1,801	1%	11	1,812
Sarasota	1,568	1%	33	1,601
Lake	1,391	1%	19	1,410
Alachua	1,219	1%	26	1,245
Leon	1,111	1%	38	1,149
St. Johns	972	1%	17	989
Hendry	980	1%		980
Charlotte	790	1%	3	793
Indian River	727	0%	12	739
Clay	726	0%	3	729
Marion	722	0%	5	727
Okaloosa	690	0%	14	704
Desoto	634	0%		634
Santa Rosa	610	0%	7	617
Suwannee	517	0%	15	532
Hardee	435	0%	5	440
Bay	390	0%	18	408

County	FL resident		Non-FL resident	Total
Hernando	401	0%	7	408
Gadsden	385	0%	4	389
Okeechobee	381	0%	2	383
Putnam	381	0%		381
Sumter	365	0%	3	368
Highlands	362	0%	3	365
Jackson	356	0%	9	365
Hamilton	342	0%	3	345
Citrus	323	0%		323
Flagler	315	0%	8	323
Columbia	294	0%	2	296
Monroe	254	0%	16	270
Walton	224	0%	33	257
Liberty	222	0%		222
Madison	195	0%	5	200
Nassau	188	0%	8	196
Holmes	179	0%	2	181
Levy	178	0%	3	181
Unknown	31	0%	136	167
Glades	164	0%		164
Washington	110	0%	2	112
Gilchrist	102	0%		102
Bradford	84	0%		84
Taylor	79	0%	1	80
Calhoun	77	0%		77
Baker	72	0%		72
Dixie	69	0%		69
Wakulla	63	0%	2	65
Union	62	0%		62
Jefferson	49	0%	2	51
Lafayette	32	0%		32
Gulf	20	0%	3	23
Franklin	5	0%	1	6
Total	156,288		2,709	158,997

Coronavirus: characteristics of 156,288 Florida resident cases

Data through Jun 30, 2020 verified as of Jul 1, 2020 at 09:25 AM

Data in this report are provisional and subject to change.

The table below includes the cities and counties of residence for cases in Florida residents based on the patient's ZIP Code.

Note that city is not always received as part of the initial notification and may be missing while the case is being investigated.

City and county	Cases
Miami, Dade	22,647
Orlando, Orange	8,081
Tampa, Hillsborough	7,290
Jacksonville, Duval	5,781
Hialeah, Dade	5,305
Fort Lauderdale, Broward	3,502
West Palm Beach, Palm Beach	3,362
Hollywood, Broward	3,215
Saint Petersburg, Pinellas	3,199
Homestead, Dade	2,582
Fort Myers, Lee	2,550
Naples, Collier	2,511
Bradenton, Manatee	2,081
Lake Worth, Palm Beach	2,044
Pompano Beach, Broward	1,827
Kissimmee, Osceola	1,645
Boca Raton, Palm Beach	1,501
Immokalee, Collier	1,498
Pensacola, Escambia	1,486
Boynton Beach, Palm Beach	1,325
Lakeland, Polk	1,317
Miami Beach, Dade	1,265
Lehigh Acres, Lee	1,250
Port Saint Lucie, St. Lucie	1,164
Clearwater, Pinellas	1,162
Sarasota, Sarasota	1,138
Cape Coral, Lee	1,122
Miramar, Broward	1,114
Tallahassee, Leon	1,099
Gainesville, Alachua	1,047
Stuart, Martin	1,019
Miami Gardens, Dade	928
Delray Beach, Palm Beach	922
Winter Haven, Polk	896
Lake Worth Beach, Palm Beach	859
Opa Locka, Dade	775
Indiantown, Martin	714
Brandon, Hillsborough	708
Riverview, Hillsborough	695
Jupiter, Palm Beach	679
Largo, Pinellas	670
Coral Springs, Broward	657
Apopka, Orange	611
Plant City, Hillsborough	604
Fort Pierce, St. Lucie	600
North Miami Beach, Dade	580
Belle Glade, Palm Beach	576
Missing, Broward	556
Clewiston, Hendry	553
Arcadia, Desoto	553
Melbourne, Brevard	551
Sunrise, Broward	526
North Miami, Dade	510
Sanford, Seminole	510
Florida City, Dade	499
Daytona Beach, Volusia	499
Ocala, Marion	496
Winter Park, Orange	495
New Port Richey, Pasco	494

Coronavirus: characteristics of 156,288 Florida resident cases

Data through Jun 30, 2020 verified as of Jul 1, 2020 at 09:25 AM

Data in this report are provisional and subject to change.

The table below includes the cities and counties of residence for cases in Florida residents based on the patient's ZIP Code.

Note that city is not always received as part of the initial notification and may be missing while the case is being investigated.

City and county	Cases
Davie, Broward	493
Royal Palm Beach, Palm Beach	487
Palmetto, Manatee	483
Oviedo, Seminole	473
Doral, Dade	465
Palm Beach Gardens, Palm Beach	459
Port Charlotte, Charlotte	455
Live Oak, Suwannee	448
Vero Beach, Indian River	443
Deerfield Beach, Broward	441
Altamonte Springs, Seminole	436
Saint Augustine, St. Johns	425
Plantation, Broward	387
Clermont, Lake	387
Winter Garden, Orange	381
Saint Cloud, Osceola	378
Deltona, Volusia	373
Okeechobee, Okeechobee	371
Seminole, Pinellas	371
Margate, Broward	369
Deland, Volusia	365
Palm Bay, Brevard	358
Bonita Springs, Lee	355
Wesley Chapel, Pasco	352
Longwood, Seminole	339
Tamarac, Broward	337
Wellington, Palm Beach	334
Ocoee, Orange	331
Orange Park, Clay	331
Land O Lakes, Pasco	329
Labelle, Hendry	324
Pinellas Park, Pinellas	323
Palm Harbor, Pinellas	321
Coral Gables, Dade	320
Lutz, Hillsborough	303
Davenport, Polk	303
North Lauderdale, Broward	298
Pembroke Pines, Broward	297
Missing, Palm Beach	296
Jacksonville Beach, Duval	290
Ruskin, Hillsborough	290
Cocoa, Brevard	285
Casselberry, Seminole	284
South Bay, Palm Beach	282
Fort Walton Beach, Okaloosa	280
South Miami, Dade	280
Lake City, Columbia	277
Hallandale, Broward	275
Panama City, Bay	274
Coconut Creek, Broward	274
Milton, Santa Rosa	270
Jasper, Hamilton	267
Windermere, Orange	262
Quincy, Gadsden	262
Lake Mary, Seminole	262
Valrico, Hillsborough	260
Weston, Broward	259
Punta Gorda, Charlotte	258
Palm Coast, Flagler	254

Coronavirus: characteristics of 156,288 Florida resident cases

Data through Jun 30, 2020 verified as of Jul 1, 2020 at 09:25 AM

Data in this report are provisional and subject to change.

The table below includes the cities and counties of residence for cases in Florida residents based on the patient's ZIP Code.

Note that city is not always received as part of the initial notification and may be missing while the case is being investigated.

City and county	Cases
Aventura, Dade	253
Spring Hill, Hernando	245
Bartow, Polk	242
Oakland Park, Broward	242
Wimauma, Hillsborough	239
Pahokee, Palm Beach	238
Tavares, Lake	231
Winter Springs, Seminole	227
Missing, Dade	225
Palatka, Putnam	225
Bristol, Liberty	219
Wauchula, Hardee	206
Maitland, Orange	206
North Port, Sarasota	198
Ponte Vedra Beach, St. Johns	196
Ormond Beach, Volusia	189
Leesburg, Lake	189
Missing, Collier	189
Haines City, Polk	188
Fellsmere, Indian River	183
North Fort Myers, Lee	179
Miami Lakes, Dade	175
Tarpon Springs, Pinellas	175
Sneads, Jackson	172
Riviera Beach, Palm Beach	170
Zephyrhills, Pasco	168
Bonifay, Holmes	167
Lantana, Palm Beach	166
Lake Wales, Polk	162
Dunedin, Pinellas	160
Seffner, Hillsborough	159
Port Richey, Pasco	158
Moore Haven, Glades	157
Auburndale, Polk	156
Sebring, Highlands	154
Kissimmee, Polk	152
Dade City, Pasco	150
Eustis, Lake	147
Loxahatchee, Palm Beach	147
Green Cove Springs, Clay	146
Port Orange, Volusia	145
Middleburg, Clay	143
Orange City, Volusia	142
Palm City, Martin	142
Bushnell, Sumter	141
Odessa, Hillsborough	141
Mulberry, Polk	141
Hobe Sound, Martin	140
Wilton Manors, Broward	140
Holiday, Pasco	138
Hudson, Pasco	138
Lauderhill, Broward	137
Merritt Island, Brevard	137
Estero, Lee	130
Venice, Sarasota	126
Missing, Hillsborough	124
Titusville, Brevard	122
Gulf Breeze, Santa Rosa	122
Cantonment, Escambia	121

Coronavirus: characteristics of 156,288 Florida resident cases

Data through Jun 30, 2020 verified as of Jul 1, 2020 at 09:25 AM

Data in this report are provisional and subject to change.

The table below includes the cities and counties of residence for cases in Florida residents based on the patient's ZIP Code.

Note that city is not always received as part of the initial notification and may be missing while the case is being investigated.

City and county	Cases
Saint Johns, St. Johns	121
Debary, Volusia	120
Atlantic Beach, Duval	119
Brooksville, Hernando	119
Destin, Okaloosa	118
Avon Park, Highlands	117
Madison, Madison	117
Pinecrest, Dade	117
Dover, Hillsborough	116
Cooper City, Broward	113
Missing, Orange	113
Rockledge, Brevard	113
Bowling Green, Hardee	111
Parrish, Manatee	110
The Villages, Sumter	110
Defuniak Springs, Walton	109
Lauderdale Lakes, Broward	109
Marianna, Jackson	109
Palm Springs, Palm Beach	107
Dania, Broward	106
Key Biscayne, Dade	105
Fort Meade, Polk	104
Gibsonton, Hillsborough	104
Crestview, Okaloosa	103
Oldsmar, Pinellas	102
Chiefland, Levy	97
Missing, Polk	97
Frostproof, Polk	97
Sarasota, Manatee	95
Navarre, Santa Rosa	94
Missing, Duval	93
Inverness, Citrus	90
New Smyrna Beach, Volusia	90
Chipley, Washington	90
Key West, Monroe	89
Missing, Pasco	88
North Palm Beach, Palm Beach	88
Apollo Beach, Hillsborough	87
Ponte Vedra, St. Johns	86
Safety Harbor, Pinellas	85
Mount Dora, Lake	83
Groveland, Lake	82
Fernandina Beach, Nassau	81
Parkland, Broward	80
Ellenton, Manatee	79
Missing, Hendry	79
Lithia, Hillsborough	79
Fleming Island, Clay	77
Neptune Beach, Duval	75
Trenton, Gilchrist	75
Perry, Taylor	73
Missing, Hardee	72
Sun City Center, Hillsborough	68
Missing, Desoto	68
Jennings, Hamilton	66
Pace, Santa Rosa	66
Missing, Lee	66
Blountstown, Calhoun	66
Cocoa Beach, Brevard	63

Coronavirus: characteristics of 156,288 Florida resident cases

Data through Jun 30, 2020 verified as of Jul 1, 2020 at 09:25 AM

Data in this report are provisional and subject to change.

The table below includes the cities and counties of residence for cases in Florida residents based on the patient's ZIP Code.

Note that city is not always received as part of the initial notification and may be missing while the case is being investigated.

City and county	Cases
Jacksonville, St. Johns	63
Holly Hill, Volusia	63
Jensen Beach, Martin	62
Starke, Bradford	62
Santa Rosa Beach, Walton	61
Niceville, Okaloosa	61
Summerfield, Marion	60
Sebastian, Indian River	58
Missing, St. Johns	58
Thonotosassa, Hillsborough	57
Palmetto Bay, Dade	57
Crescent City, Putnam	57
Missing, Brevard	56
Crawfordville, Wakulla	53
Panama City Beach, Bay	52
Alachua, Alachua	52
Lake Placid, Highlands	52
Satellite Beach, Brevard	51
Crystal River, Citrus	51
Macclenny, Baker	50
Myakka City, Manatee	50
Clearwater Beach, Pinellas	48
Missing, Madison	48
Lake Park, Palm Beach	48
Missing, Osceola	47
Palm Beach, Palm Beach	46
Ave Maria, Collier	46
Newberry, Alachua	45
Chuluota, Seminole	44
Missing, Citrus	44
Mary Esther, Okaloosa	43
Missing, Santa Rosa	43
Edgewater, Volusia	43
Monticello, Jefferson	42
Tavernier, Monroe	41
Old Town, Dixie	41
Tequesta, Palm Beach	41
Belleview, Marion	40
Havana, Gadsden	40
Missing, Indian River	40
Lake Alfred, Polk	40
Englewood, Charlotte	39
Spring Hill, Pasco	39
Shalimar, Okaloosa	39
Zolfo Springs, Hardee	39
Carol City, Dade	39
Key Largo, Monroe	38
Missing, Seminole	37
De Leon Springs, Volusia	37
Missing, Marion	36
Geneva, Seminole	36
Gotha, Orange	36
Williston, Levy	36
Lynn Haven, Bay	35
Minneola, Lake	35
Pierson, Volusia	35
Missing, St. Lucie	35
Cape Canaveral, Brevard	34
Yulee, Nassau	34

Coronavirus: characteristics of 156,288 Florida resident cases

Data through Jun 30, 2020 verified as of Jul 1, 2020 at 09:25 AM

Data in this report are provisional and subject to change.

The table below includes the cities and counties of residence for cases in Florida residents based on the patient's ZIP Code.

Note that city is not always received as part of the initial notification and may be missing while the case is being investigated.

City and county	Cases
Sorrento, Lake	34
Marco Island, Collier	34
Callahan, Nassau	34
Trinity, Pasco	33
Marathon, Monroe	32
Homosassa, Citrus	32
Missing, Sarasota	32
Lady Lake, Lake	32
Missing, Escambia	32
Greenacres, Palm Beach	32
Dunnellon, Marion	31
Missing, Volusia	31
Fort Myers Beach, Lee	30
Indialantic, Brevard	30
Eagle Lake, Polk	30
Missing, Manatee	30
Gulfport, Pinellas	29
Missing, Highlands	29
Polk City, Polk	29
Nokomis, Sarasota	28
Lakewood Ranch, Manatee	28
Interlachen, Putnam	28
Mascotte, Lake	27
West Melbourne, Brevard	27
Beverly Hills, Citrus	26
Missing, Pinellas	26
Mayo, Lafayette	26
Midway, Gadsden	26
Flagler Beach, Flagler	26
Mims, Brevard	26
Chattahoochee, Gadsden	25
Bronson, Levy	25
Lake Panasoffkee, Sumter	25
Rotunda West, Charlotte	25
Bunnell, Flagler	25
O Brien, Suwannee	25
Belle Isle, Orange	25
Missing, Monroe	24
Medley, Dade	24
Cross City, Dixie	24
East Palatka, Putnam	24
Lake Butler, Union	24
Oxford, Sumter	23
El Portal, Dade	23
Alva, Lee	23
Florida Dept Of Corrections, Union	22
Southwest Ranches, Broward	22
Oakland, Orange	22
Lecanto, Citrus	22
Bal Harbour, Dade	22
Molino, Escambia	22
Missing, Hernando	22
Umatilla, Lake	22
High Springs, Alachua	22
Missing, Unknown	22
Missing, Lake	21
West Miami, Dade	21
Hilliard, Nassau	21
South Pasadena, Pinellas	21

Coronavirus: characteristics of 156,288 Florida resident cases

Data through Jun 30, 2020 verified as of Jul 1, 2020 at 09:25 AM

Data in this report are provisional and subject to change.

The table below includes the cities and counties of residence for cases in Florida residents based on the patient's ZIP Code.

Note that city is not always received as part of the initial notification and may be missing while the case is being investigated.

City and county	Cases
Montverde, Lake	20
South Daytona, Volusia	20
Englewood, Sarasota	20
Indian Rocks Beach, Pinellas	20
Surfside, Dade	19
Cutler Bay, Dade	19
Freeport, Walton	19
Coconut Grove, Dade	19
Christmas, Orange	19
Biscayne Park, Dade	18
Keystone Heights, Clay	18
Seville, Volusia	18
Viera, Brevard	18
Zellwood, Orange	18
Hernando, Citrus	18
Felda, Hendry	18
Osprey, Sarasota	18
Gretna, Gadsden	18
Fruitland Park, Lake	18
Wildwood, Sumter	17
Sanibel, Lee	17
Greenwood, Jackson	17
Bell, Gilchrist	17
Miramar Beach, Walton	17
Citrus Springs, Citrus	17
Indian Harbour Beach, Brevard	17
Citra, Marion	17
Fort White, Columbia	16
Hallandale Beach, Broward	16
Kenneth City, Pinellas	16
Melbourne Beach, Brevard	16
Branford, Suwannee	16
Raiford, Union	16
Webster, Sumter	15
Missing, Martin	15
Dunnellon, Citrus	15
Mcalpin, Suwannee	15
Unknown, Orange	15
Atlantis, Palm Beach	15
Missing, Okaloosa	15
North Bay Village, Dade	14
Poinciana, Polk	14
Hialeah Gardens, Dade	14
Archer, Alachua	14
Cottondale, Jackson	14
Juno Beach, Palm Beach	14
Temple Terrace, Hillsborough	14
Dundee, Polk	13
Lawtey, Bradford	13
Greenville, Madison	13
Lee, Madison	13
Weeki Wachee, Hernando	13
Miami Springs, Dade	13
Missing, Jackson	13
Canal Point, Palm Beach	13
Howey-In-The-Hills, Lake	13
Jay, Santa Rosa	13
Celebration, Osceola	13
Sunny Isles Beach, Dade	12

Coronavirus: characteristics of 156,288 Florida resident cases

Data through Jun 30, 2020 verified as of Jul 1, 2020 at 09:25 AM

Data in this report are provisional and subject to change.

The table below includes the cities and counties of residence for cases in Florida residents based on the patient's ZIP Code.

Note that city is not always received as part of the initial notification and may be missing while the case is being investigated.

City and county	Cases
Fern Park, Seminole	12
Center Hill, Sumter	12
San Antonio, Pasco	12
Century, Escambia	11
Hastings, St. Johns	11
Hawthorne, Alachua	11
Hypoluxo, Palm Beach	11
Sanderson, Baker	11
Melrose, Putnam	11
Malabar, Brevard	11
Port Saint Joe, Gulf	11
Babson Park, Polk	11
Madeira Beach, Pinellas	11
Kendall, Dade	11
Ocklawaha, Marion	11
Grand Ridge, Jackson	10
Osteen, Volusia	10
Missing, Clay	10
Carrollwood, Hillsborough	10
Belleair Beach, Pinellas	10
Alafaya, Orange	10
Lauderdale By The Sea, Broward	10
Missing, Leon	10
Satsuma, Putnam	10
Big Pine Key, Monroe	10
Missing, Flagler	10
Missing, Okeechobee	10
The Villages, Lake	10
Missing, Gilchrist	9
Bryceville, Nassau	9
West Park, Broward	9
Lake Helen, Volusia	9
Baker, Okaloosa	9
Missing, Walton	9
Morrison, Levy	9
Greensboro, Gadsden	9
Islamorada, Monroe	9
Vernon, Washington	9
Patrick Air Force Base, Brevard	8
Waverly, Polk	8
Malone, Jackson	8
Princeton, Dade	8
Sweetwater, Dade	8
Glen Saint Mary, Baker	8
Grand Island, Lake	8
Grant-Valkaria, Brevard	8
Eglin Air Force Base, Okaloosa	8
Weirsdale, Marion	8
Haverhill, Palm Beach	8
Bradenton Beach, Manatee	8
Odessa, Pasco	8
Missing, Nassau	8
Missing, Levy	7
Placida, Charlotte	7
Holmes Beach, Manatee	7
Yalaha, Lake	7
Ona, Hardee	7
Waldo, Alachua	7
Bokeelia, Lee	7

Coronavirus: characteristics of 156,288 Florida resident cases

Data through Jun 30, 2020 verified as of Jul 1, 2020 at 09:25 AM

Data in this report are provisional and subject to change.

The table below includes the cities and counties of residence for cases in Florida residents based on the patient's ZIP Code.

Note that city is not always received as part of the initial notification and may be missing while the case is being investigated.

City and county	Cases
Altha, Calhoun	7
Missing, Holmes	7
Wewahitchka, Gulf	7
Silver Springs, Marion	7
Naranja, Dade	7
Lake Suzy, Desoto	7
Crystal Beach, Pinellas	7
Missing, Washington	7
Venus, Highlands	7
Lighthouse Point, Broward	7
Elkton, St. Johns	7
Pomona Park, Putnam	7
White Springs, Hamilton	7
Reunion, Osceola	7
Singer Island, Palm Beach	7
Okahumpka, Lake	7
Youngstown, Bay	7
Lady Lake, Sumter	7
Miami Shores, Dade	7
Oak Hill, Volusia	7
Coleman, Sumter	7
Edgewood, Orange	6
Bellview, Escambia	6
Lake Hamilton, Polk	6
Reddick, Marion	6
Missing, Jefferson	6
Golden Beach, Dade	6
Sumterville, Sumter	6
Missing, Suwannee	6
Floral City, Citrus	6
Fort Denaud, Hendry	6
Belleair, Pinellas	6
Altoona, Lake	6
Bay Harbor Islands, Dade	6
Nocatee, Desoto	6
Micanopy, Alachua	6
Callaway, Bay	5
Wellborn, Suwannee	5
Southport, Bay	5
Missing, Gadsden	5
Mcdavid, Escambia	5
Valparaiso, Okaloosa	5
Goulds, Dade	5
Astor, Lake	5
Baldwin, Duval	5
Santa Fe, Alachua	5
Sun City, Hillsborough	5
Village Of Palmetto Bay, Dade	5
Laurel Hill, Okaloosa	5
Heathrow, Seminole	5
Anthony, Marion	5
Ochopee, Collier	5
Sopchoppy, Wakulla	5
Barefoot Bay, Brevard	5
Florahome, Putnam	5
Missing, Charlotte	5
San Mateo, Putnam	5
Sebastian, Brevard	4
Saint Pete Beach, Pinellas	4

Coronavirus: characteristics of 156,288 Florida resident cases

Data through Jun 30, 2020 verified as of Jul 1, 2020 at 09:25 AM

Data in this report are provisional and subject to change.

The table below includes the cities and counties of residence for cases in Florida residents based on the patient's ZIP Code.

Note that city is not always received as part of the initial notification and may be missing while the case is being investigated.

City and county	Cases
Pinetta, Madison	4
Kathleen, Polk	4
Matlacha, Lee	4
Fountain, Bay	4
Fruit Cove, St. Johns	4
North Redington Beach, Pinellas	4
Alford, Jackson	4
Carrabelle, Franklin	4
Graceville, Jackson	4
Missing, Alachua	4
Ocean Ridge, Palm Beach	4
Tioga, Alachua	4
Summerland Key, Monroe	4
Terra Ceia, Manatee	4
Missing, Lafayette	4
Holt, Okaloosa	4
Saint James City, Lee	4
Hollister, Putnam	4
Dania Beach, Broward	4
Poinciana, Osceola	4
Kindred, Osceola	3
Missing, Calhoun	3
Missing, Dixie	3
Westville, Holmes	3
Longboat Key, Manatee	3
Balm, Hillsborough	3
Bascom, Jackson	3
Paisley, Lake	3
Wahneta, Polk	3
Northdale, Hillsborough	3
Missing, Bay	3
Missing, Bradford	3
Mangonia Park, Palm Beach	3
Lorida, Highlands	3
Hosford, Liberty	3
Belleair Bluffs, Pinellas	3
Intercession City, Osceola	3
Siesta Key, Sarasota	3
Tierra Verde, Pinellas	3
Astatula, Lake	3
Brooker, Bradford	3
Mango, Hillsborough	3
Kissimmee, Orange	3
Ponce Inlet, Volusia	3
Labelle, Glades	3
Bonifay, Washington	3
Cloud Lake, Palm Beach	3
Missing, Baker	3
Missing, Taylor	3
Palmdale, Glades	3
Homeland, Polk	3
Lutz, Pasco	3
Tice, Lee	3
Sydney, Hillsborough	2
Tyndall Air Force Base, Bay	2
Ponce De Leon, Walton	2
Lealman, Pinellas	2
Missing, Hamilton	2
Missing, Wakulla	2

Coronavirus: characteristics of 156,288 Florida resident cases

Data through Jun 30, 2020 verified as of Jul 1, 2020 at 09:25 AM

Data in this report are provisional and subject to change.

The table below includes the cities and counties of residence for cases in Florida residents based on the patient's ZIP Code.

Note that city is not always received as part of the initial notification and may be missing while the case is being investigated.

City and county	Cases
Bay Pines, Pinellas	2
Azalea Park, Orange	2
Cudjoe Key, Monroe	2
Cutler Ridge, Dade	2
Pensacola Beach, Santa Rosa	2
Plymouth, Orange	2
Palma Sola, Manatee	2
Davenport, Osceola	2
Forest City, Orange	2
Hampton, Bradford	2
Long Boat Key, Manatee	2
Steinhatchee, Taylor	2
Winter Park, Seminole	2
Yankeetown, Levy	2
Pembroke Park, Broward	2
Pine Hills, Orange	2
North Venice, Sarasota	2
La Crosse, Alachua	2
Graceville, Holmes	2
Mayport, Duval	2
Boca Grande, Lee	2
Fort McCoy, Marion	2
Fisher Island, Dade	2
University Park, Manatee	2
Ridge Manor, Pasco	2
Lockhart, Orange	2
Captiva, Lee	2
Hawthorne, Putnam	2
Inlet Beach, Walton	2
Goodland, Collier	2
Harmony, Osceola	2
Durant, Hillsborough	2
Miami, Martin	2
Port Saint John, Brevard	2
Saint Leo, Pasco	2
Perdido Key, Escambia	2
Braden River, Manatee	2
Buena Ventura Lakes, Osceola	2
Campbellton, Jackson	2
Gulf Stream, Palm Beach	2
City Of Sunrise, Broward	2
Fpo, Duval	2
Miromar Lakes, Lee	2
Highland City, Polk	2
Missing, Putnam	2
Tallevast, Manatee	2
Treasure Island, Pinellas	2
Saint Marks, Wakulla	2
San Carlos Park, Lee	2
Missing, Sumter	2
Lehigh, Lee	2
Longboat Key, Sarasota	2
Destin, Walton	2
Aloma, Orange	2
Bayonet Point, Pasco	2
Branford, Lafayette	2
Homeless, Hillsborough	2
Hernando Beach, Hernando	2
Hiawassee, Orange	2

Coronavirus: characteristics of 156,288 Florida resident cases

Data through Jun 30, 2020 verified as of Jul 1, 2020 at 09:25 AM

Data in this report are provisional and subject to change.

The table below includes the cities and counties of residence for cases in Florida residents based on the patient's ZIP Code.

Note that city is not always received as part of the initial notification and may be missing while the case is being investigated.

City and county	Cases
Gulf Breeze, Escambia	2
Centerville, Leon	2
Missing, Gulf	2
Sugarloaf, Monroe	2
Wabasso, Indian River	2
Unknown, Seminole	1
Westville, Walton	1
Ybor City, Hillsborough	1
Saint Johns, Duval	1
Pensacola Beach, Escambia	1
Pine Castle, Orange	1
Eloise, Polk	1
Enterprise, Volusia	1
Ft Pierce, St. Lucie	1
Alpharetta, Broward	1
Hutchinson Island, St. Lucie	1
Indian Lake Estates, Polk	1
Key Colony Beach, Monroe	1
Lacoochee, Pasco	1
Lamont, Taylor	1
Cape Haze, Charlotte	1
Bayou George, Bay	1
Alva, Escambia	1
Eatonville, Orange	1
Homosassa Springs, Citrus	1
Hudson, Pinellas	1
Inglis, Levy	1
Rivera Beach, Palm Beach	1
Rubonia, Manatee	1
Perth Amboy, Hillsborough	1
Uknown, Unknown	1
University Of Tampa, Hillsborough	1
Steinhatchee, Dixie	1
Stock Island, Monroe	1
Sharpes, Brevard	1
Sorrento, Orange	1
Walnut Hill, Escambia	1
New Smyrna, Volusia	1
Mount Plymouth, Lake	1
Hillsboro Beach, Broward	1
Holder, Citrus	1
Indian River Shores, Indian River	1
Indian Rock Beach, Pinellas	1
Kenansville, Osceola	1
Elfers, Pasco	1
Everglades National Park, Dade	1
Fanning Springs, Gilchrist	1
Fernandina, Nassau	1
Cedar Key, Levy	1
Dowling Park, Suwannee	1
Eaton Park, Polk	1
Cypress Gardens, Polk	1
Pooler, Broward	1
Okeechobee, Martin	1
Oneco, Manatee	1
Samoset, Manatee	1
Thanonassass, Hillsborough	1
South Palm Beach, Palm Beach	1
Union Park, Orange	1

Coronavirus: characteristics of 156,288 Florida resident cases

Data through Jun 30, 2020 verified as of Jul 1, 2020 at 09:25 AM

Data in this report are provisional and subject to change.

The table below includes the cities and counties of residence for cases in Florida residents based on the patient's ZIP Code.

Note that city is not always received as part of the initial notification and may be missing while the case is being investigated.

City and county	Cases
Virginia Gardens, Dade	1
Wakulla Springs, Wakulla	1
Westchase, Hillsborough	1
Unknown Out Of Area, Palm Beach	1
West Delray Beach, Palm Beach	1
West Palm Beach, Unknown	1
Perrine, Dade	1
Point Washington, Walton	1
Mount Dora, Orange	1
New Church, Palm Beach	1
Pasadena, Pinellas	1
Pensacola Naval Hospital, Escambia	1
Litchfield Park, Unknown	1
Celebration, Orange	1
At Large, Broward	1
Altamonte Springs, Orange	1
Apo, Collier	1
Franklin, Orange	1
Lake Butler, Bradford	1
Jupiter, Duval	1
Indian Shores, Pinellas	1
Clarksville, Calhoun	1
Loxahatchee Groves, Palm Beach	1
Laud-By-The-Sea, Broward	1
Lake Monroe, Seminole	1
Miami, Unknown	1
Palm Beach Shores, Palm Beach	1
Port Everglades, Broward	1
Quail Heights, Dade	1
Seven Springs, Pasco	1
Unknown, Broward	1
Valkaria, Brevard	1
Venice, Hillsborough	1
The Villages, Marion	1
West Bradenton, Manatee	1
West Villages, Sarasota	1
FI, Dade	1
Estero, Collier	1
Clermont, Orange	1
Clermont, Polk	1
Bradley, Polk	1
Buckingham, Lee	1
Candler, Marion	1
Caryville, Washington	1
Aollywoss, Dade	1
Bay Lake, Orange	1
Milton, Escambia	1
Manalapan, Palm Beach	1
Missing, Glades	1
Inlet Beach, Bay	1
Jacksonville, Unknown	1
Oklawaha, Marion	1
Palm Shores, Brevard	1
Parker, Bay	1
Sewalls Point, Martin	1
South Daytona Beach, Volusia	1
Switzerland, St. Johns	1
Tampa Palms, Hillsborough	1
Tampa, Pinellas	1

Coronavirus: characteristics of 156,288 Florida resident cases

Data through Jun 30, 2020 verified as of Jul 1, 2020 at 09:25 AM

Data in this report are provisional and subject to change.

The table below includes the cities and counties of residence for cases in Florida residents based on the patient's ZIP Code.

Note that city is not always received as part of the initial notification and may be missing while the case is being investigated.

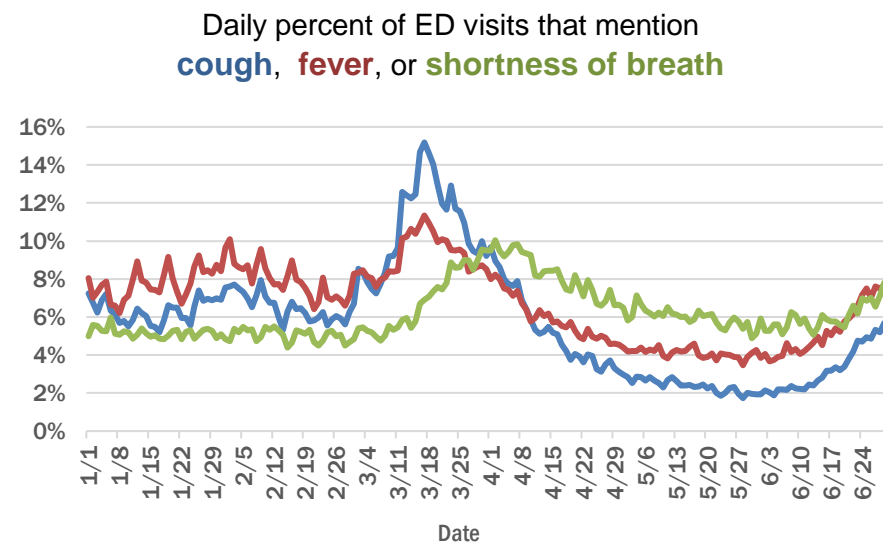
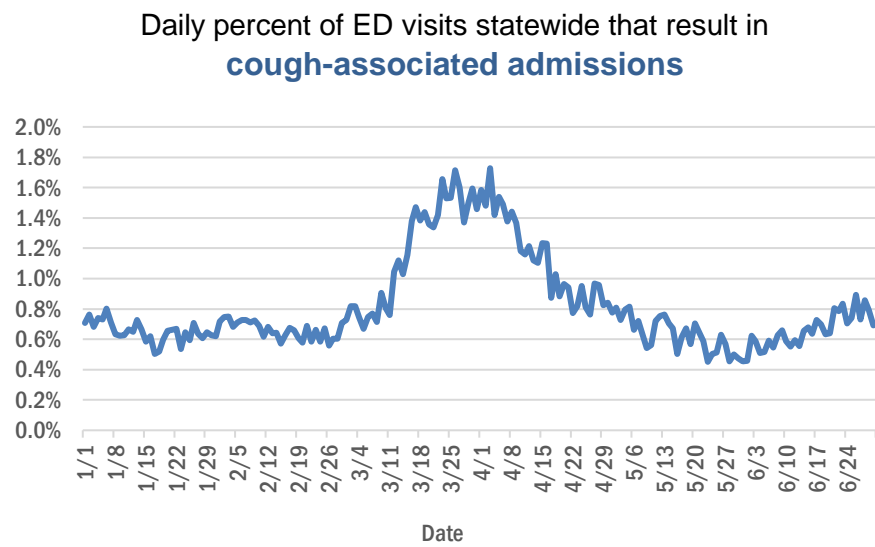
City and county	Cases
Tangerine, Orange	1
Tewksbury, Orange	1
Unknown, Columbia	1
Unknown, Palm Beach	1
Welaka, Putnam	1
Wimauma, Manatee	1
Scottsmoor, Brevard	1
Loughman, Polk	1
Lake Harbor, Palm Beach	1
Lake City, Suwannee	1
Gastonia, Polk	1
Green Acres, Palm Beach	1
Alturas, Polk	1
Champions Gate, Polk	1
Chokoloskee, Collier	1
Paxton, Walton	1
Penney Farms, Clay	1
Eastpoint, Franklin	1
Greenacres, Unknown	1
Gibsonia, Polk	1
Everglades City, Collier	1
Anna Maria, Manatee	1
Apopka, Unknown	1
Bayshore Gardens, Manatee	1
Bonita Springs, Collier	1
Bonita Springs, Manatee	1
Ocala, Unknown	1
Long Key, Monroe	1
Lamont, Jefferson	1
Redington Beach, Pinellas	1
Town N Country, Hillsborough	1
Winterpark, Unknown	1
Total	156,288

Coronavirus: additional surveillance information

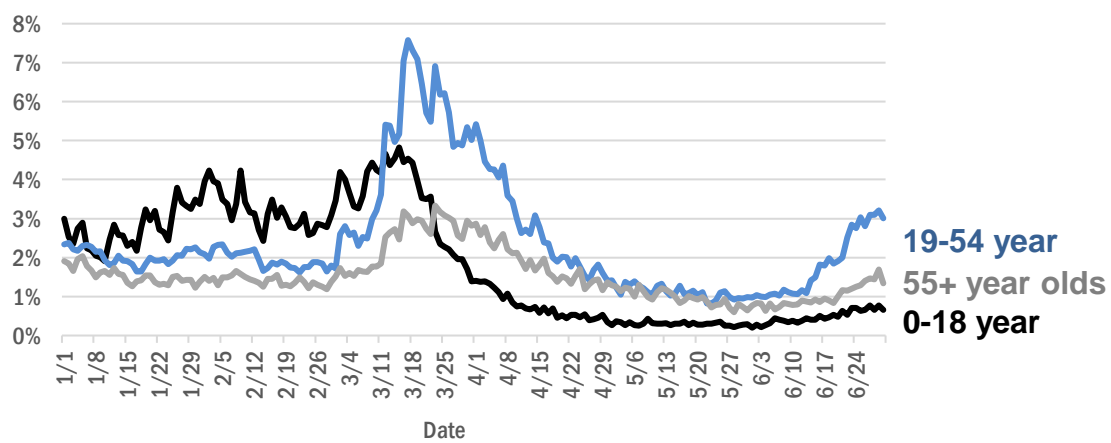
Data through Jun 30, 2020 verified as of Jul 1, 2020 at 09:25 AM

Data in this report are provisional and subject to change.

Statewide emergency department (ED) chief complaint and admission data



Daily percent of ED visits statewide that mention cough by age group



The Electronic Surveillance System for the Early Notification of Community-Based Epidemics (ESSENCE-FL) includes chief complaint data from 211 of 212 Florida EDs. Data are transmitted electronically to ESSENCE-FL daily or hourly.

Coronavirus: All persons with tests reported

Data through Jun 30, 2020 verified as of Jul 1, 2020 at 09:25 AM

Data in this report are provisional and subject to change.

The table below includes persons with laboratory results that the Department of Health has received electronically or by mail/fax for Florida residents and non-Florida residents.

County	Awaiting testing	Inconclusive	Negative	Positive	Percent positive	Total tested
Dade	165	339	281,968	37,961	12%	320,268
Broward	35	87	183,467	16,155	8%	199,709
Palm Beach	167	233	131,863	14,447	10%	146,543
Hillsborough	118	83	116,385	11,465	9%	127,933
Orange	86	151	127,464	10,874	8%	138,489
Pinellas	80	30	88,027	6,861	7%	94,918
Duval	86	133	98,538	6,480	6%	105,151
Lee	20	16	51,532	5,869	10%	57,417
Collier	106	15	30,010	4,376	13%	34,401
Polk	18	24	43,316	4,048	9%	47,388
Manatee	2	17	37,847	3,015	7%	40,879
Seminole	20	30	34,647	2,682	7%	37,359
Volusia	27	31	38,719	2,219	5%	40,969
Osceola	55	47	24,236	2,164	8%	26,447
Pasco	44	10	33,767	2,133	6%	35,910
Martin	35	23	14,867	2,112	12%	17,002
Escambia	3	12	31,880	2,046	6%	33,938
Brevard	10	5	43,508	1,962	4%	45,475
St. Lucie	89	9	21,085	1,812	8%	22,906
Sarasota	9	5	34,911	1,601	4%	36,517
Lake	43	19	32,509	1,410	4%	33,938
Alachua		9	40,646	1,245	3%	41,900
Leon	147	52	27,957	1,149	4%	29,158
St. Johns	40	25	20,028	989	5%	21,042
Hendry		2	4,210	980	19%	5,192
Charlotte	4	4	11,725	793	6%	12,522
Indian River	25	1	13,757	739	5%	14,497
Clay	8	11	16,630	729	4%	17,370
Marion	430	5	23,438	727	3%	24,170
Okaloosa	1	10	12,759	704	5%	13,473
Desoto	16	5	4,095	634	13%	4,734
Santa Rosa	3	2	12,292	617	5%	12,911
Suwannee		4	3,728	532	12%	4,264
Hardee		2	2,060	440	18%	2,502
Bay	84	9	7,609	408	5%	8,026
Hernando		1	9,888	408	4%	10,297
Gadsden	2	7	5,484	389	7%	5,880
Okeechobee			3,294	383	10%	3,677
Putnam	2	1	6,259	381	6%	6,641
Sumter	23	7	7,450	368	5%	7,825
Highlands	7	14	8,860	365	4%	9,239
Jackson	7	9	4,887	365	7%	5,261
Hamilton	1	1	2,379	345	13%	2,725
Citrus	2	4	9,689	323	3%	10,016
Flagler	2	5	7,998	323	4%	8,326
Columbia	3	5	5,657	296	5%	5,958
Monroe	43		5,427	270	5%	5,697
Walton	1	5	3,290	257	7%	3,552

Coronavirus: All persons with tests reported

Data through Jun 30, 2020 verified as of Jul 1, 2020 at 09:25 AM

Data in this report are provisional and subject to change.

The table below includes persons with laboratory results that the Department of Health has received electronically or by mail/fax for Florida residents and non-Florida residents.

County	Awaiting testing	Inconclusive	Negative	Positive	Percent positive	Total tested
Liberty		2	2,113	222	9%	2,337
Madison	3	3	1,792	200	10%	1,995
Nassau	9	3	7,034	196	3%	7,233
Holmes		4	2,363	181	7%	2,548
Levy		2	3,081	181	6%	3,264
Unknown	2	13	2,196	167	7%	2,376
Glades			476	164	26%	640
Washington	3	1	1,734	112	6%	1,847
Gilchrist		3	2,240	102	4%	2,345
Bradford	1	2	2,556	84	3%	2,642
Taylor	1	2	1,339	80	6%	1,421
Calhoun	2	2	821	77	9%	900
Baker	1		1,744	72	4%	1,816
Dixie			1,324	69	5%	1,393
Wakulla	1	3	2,173	65	3%	2,241
Union	1		2,242	62	3%	2,304
Jefferson		1	1,205	51	4%	1,257
Lafayette		1	515	32	6%	548
Gulf			1,517	23	1%	1,540
Franklin	1		850	6	1%	856
Total	2,094	1,561	1,821,357	158,997	8%	1,981,915

Coronavirus: testing by laboratory

Data through Jun 30, 2020 verified as of Jul 1, 2020 at 09:25 AM

Data in this report are provisional and subject to change.

The numbers in the table below represent the number for whom test results were received by the Department of Health. A person can be tested by more than one laboratory and can have both positive and negative results. **Therefore, the sum of the numbers in each column will be larger than the total number of people tested.**

Reporting lab	Inconclusive	Negative	Positive	Percent positive	Total
QUEST DIAGNOSTICS - TAMPA	797	374,861	38,037	9%	413,695
LABORATORY CORPORATION OF AMERICA	259	258,364	26,155	9%	284,778
BIO REFERENCE LABORATORIES, INC	621	237,075	27,157	10%	264,853
GENETWORX	654	173,312	7,810	4%	181,776
NORTHWEST LABORATORY	42	92,889	1,307	1%	94,238
ADVENT HEALTH LAB	87	80,352	6,841	8%	87,280
REALTOX LABS LLC	494	64,271	2,419	4%	67,184
MAYO CLINIC LABORATORIES	55	35,341	1,876	5%	37,272
BAYCARE LABORATORIES LLC	73	31,148	2,050	6%	33,271
QUEST DIAGNOSTICS NICHOLS INSTITUTE, INC.	80	30,801	2,369	7%	33,250
BIOCOLLECTIONS WORLDWIDE, INC	36	27,791	3,409	11%	31,236
SACRED HEART HOSPITAL LABORATORY	2	27,757	1,612	5%	29,371
MEDICAL DIAGNOSTIC LABORATORIES	169	26,117	2,533	9%	28,819
TAMPA GENERAL HOSPITAL	4	26,789	1,543	5%	28,336
UF PATHLABS	33	27,450	509	2%	27,992
ORLANDO REG MED CENTER CLINICAL LAB	108	25,680	1,415	5%	27,203
MEMORIAL REGIONAL HOSPITAL SOUTH	14	24,239	2,882	11%	27,135
TESTING MATTERS INC		23,103	2,629	10%	25,732
JACKSON MEMORIAL HOSPITAL CLINICAL LAB	67	19,454	2,923	13%	22,444
ARUP LABORATORIES		20,678	800	4%	21,478
BPHL-JACKSONVILLE	6	18,579	2,741	13%	21,326
DIATHERIX LABORATORIES		19,801	1,478	7%	21,279
BPHL-MIAMI	160	14,529	2,643	15%	17,332
VIRACOR-EUROFINS LABORATORIES		13,168	3,686	22%	16,854
BPHL-TAMPA (SPECTRUM BLVD)	43	14,964	1,811	11%	16,818
SHANDS AT THE UNIVERSITY OF FLORIDA	3	13,977	319	2%	14,299
CAPE CORAL HOSPITAL CLINICAL LABORATORY		9,534	1,237	11%	10,771
LAKELAND REGIONAL MEDICAL CENTER	16	9,999	685	6%	10,700
AIT LABORATORIES		8,931	718	7%	9,649
ST VINCENT'S MEDICAL CENTER - RIVERSIDE	1	9,200	417	4%	9,618
BROWARD GENERAL MEDICAL CENTER-CLINICAL LAB	2	8,738	586	6%	9,326
ST JOSEPHS HOSPITAL SOUTH LABORATORY	21	8,089	1,155	12%	9,265
BAPTIST HOSPITAL OF MIAMI CLINICAL LABORATORY	4	8,085	1,084	12%	9,173
WALGREENS	3	8,100	983	11%	9,086
STATLAB_MOBILE		7,721	541	7%	8,262
FLORIDA HOSPITAL - TAMPA	5	7,411	355	5%	7,771
CLEVELAND CLINIC HOSPITAL LAB	3	7,341	398	5%	7,742
LABCORP BURLINGTON (ELR)	2	7,418	275	4%	7,695
SHANDS JACKSONVILLE MEDICAL CENTER INC	23	7,427	236	3%	7,686
NAPLES COMMUNITY HOSPITAL	9	7,075	600	8%	7,684
BAPTIST MEDICAL CENTER JACKSONVILLE	1	7,105	279	4%	7,385
ARNOLD PALMER MEDICAL CENTER CLINICAL LAB	86	6,504	793	11%	7,383
ADVENTHEALTH DAYTONA BEACH	3	7,063	280	4%	7,346
REAL DIAGNOSTICS	77	6,449	465	7%	6,991
ST JOSEPHS HOSPITAL LABORATORY	6	5,976	479	7%	6,461
INTEGRATED REGIONAL LABORATORIES LLP		5,615	549	9%	6,164
DELRAY MEDICAL CENTER	2	5,129	946	16%	6,077

Coronavirus: testing by laboratory

Data through Jun 30, 2020 verified as of Jul 1, 2020 at 09:25 AM

Data in this report are provisional and subject to change.

The numbers in the table below represent the number for whom test results were received by the Department of Health. A person can be tested by more than one laboratory and can have both positive and negative results. **Therefore, the sum of the numbers in each column will be larger than the total number of people tested.**

Reporting lab	Inconclusive	Negative	Positive	Percent positive	Total
SARASOTA MEMORIAL HOSPITAL MAIN LAB	12	5,252	310	6%	5,574
MOUNT SINAI MEDICAL CENTER	2	5,234	331	6%	5,567
MORTON PLANT HOSPITAL-ADLER INSTITUTE	5	5,241	280	5%	5,526
PALMETTO GENERAL HOSPITAL LAB	2	4,614	822	15%	5,438
JFK MEDICAL CENTER LAB		4,617	767	14%	5,384
SOUTH MIAMI HOSPITAL LAB	8	4,746	576	11%	5,330
MEMORIAL REGIONAL HOSPITAL CLINICAL LABORATORY	4	4,984	304	6%	5,292
MEMORIAL HOSPITAL- MIRAMAR	4	4,495	665	13%	5,164
FLORIDA HOSPITAL WESLEY CHAPEL	10	4,340	411	9%	4,761
SAINT MARY'S MEDICAL CENTER	2	4,288	461	10%	4,751
TALLAHASSEE MEMORIAL HOSPITAL	1	4,499	160	3%	4,660
BAPTIST HOSPITAL OF MIAMI MOLECULAR DIAGNOSTICS	25	4,094	467	10%	4,586
INDIAN RIVER MEDICAL CENTER LAB		4,282	121	3%	4,403
WELLINGTON REGIONAL MED CTR LAB	2	3,881	439	10%	4,322
FLORIDA HOSPITAL WATERMAN LABORATORY	8	4,155	157	4%	4,320
NORTH FLORIDA REGIONAL MEDICAL CENTER		3,977	169	4%	4,146
LARKIN COMMUNITY HOSP.	10	3,458	620	15%	4,088
MEMORIAL HOSPITAL WEST LABORATORY SERVICES	6	3,371	423	11%	3,800
WEST KENDALL BAPTIST HOSPITAL LABORATORY	2	3,150	505	14%	3,657
HOMESTEAD HOSPITAL CLINICAL LABORATORY		3,112	544	15%	3,656
NICKLAUS CHILDREN'S HOSPITAL	4	3,321	235	7%	3,560
ST ANTHONY'S HOSPITAL LAB	8	3,156	312	9%	3,476
CORAL SPRINGS MED CTR		3,089	297	9%	3,386
NEW YORK STATE ELR - SUNRISE MEDICAL LABORATORIES		3,288	77	2%	3,365
BRANDON REGIONAL HOSPITAL		2,966	348	11%	3,314
ECCO LAB GROUP CO	75	2,594	568	18%	3,237
AEGIS SCIENCES CORPORATION	18	3,039	63	2%	3,120
LEE HEALTH COCONUT POINT CLINICAL LAB		2,466	529	18%	2,995
QUEST DIAGNOSTICS NICHOLS INSTITUTE - SJC (ELR)	3	2,655	293	10%	2,951
MEMORIAL HOSPITAL JACKSONVILLE	7	2,509	316	11%	2,832
WINTER HAVEN HOSPITAL CLINICAL LABORATORY	1	2,494	260	9%	2,755
JUPITER MEDICAL CENTER LAB	7	2,455	269	10%	2,731
MEASE COUNTRYSIDE LAB		2,534	138	5%	2,672
MOFFITT CANCER CENTER	5	2,578	16	1%	2,599
MARTIN HOSPITAL SOUTH LAB		2,503	90	3%	2,593
GOOD SAMARITAN MEDICAL CENTER LAB	1	2,262	293	11%	2,556
MANATEE MEMORIAL HOSPITAL		2,360	185	7%	2,545
BAPTIST MEDICAL CENTER SOUTH		2,427	108	4%	2,535
FLORIDA HOSPITAL HEARTLAND MED CTR CLINICAL LAB	1	2,355	96	4%	2,452
ST LUCIE MEDICAL CENTER		2,137	315	13%	2,452
CLEVELAND CLINIC MARTIN SOUTH HOSPITAL		2,288	148	6%	2,436
GULF COAST MEDICAL CENTER MICROLAB		1,936	433	18%	2,369
LAWNWOOD REGIONAL MEDICAL CENTER		2,175	185	8%	2,360
MEDICAL CENTER OF TRINITY CLINICAL LABORATORY		1,936	352	15%	2,288

Coronavirus: testing by laboratory

Data through Jun 30, 2020 verified as of Jul 1, 2020 at 09:25 AM

Data in this report are provisional and subject to change.

The numbers in the table below represent the number for whom test results were received by the Department of Health. A person can be tested by more than one laboratory and can have both positive and negative results. **Therefore, the sum of the numbers in each column will be larger than the total number of people tested.**

Reporting lab	Inconclusive	Negative	Positive	Percent positive	Total
LARGO MEDICAL CENTER		2,013	271	12%	2,284
ORANGE PARK MEDICAL CENTER	4	2,001	277	12%	2,282
ST VINCENTS CLAY COUNTY		2,104	166	7%	2,270
Lee Memorial Hospital		1,940	303	14%	2,243
OSCEOLA REGIONAL MEDICAL CENTER	1	2,125	112	5%	2,238
WESTSIDE REGIONAL MED CTR	1	1,962	227	10%	2,190
AVENTURA HOSPITAL LAB		1,724	461	21%	2,185
OVIEDO MEDICAL CENTER		1,901	279	13%	2,180
WEST BOCA MEDICAL CENTER LAB		2,028	146	7%	2,174
BROWARD HEALTH NORTH CLINICAL LABORATORY		1,975	192	9%	2,167
NCH NORTH NAPLES HOSPITAL LAB		1,926	211	10%	2,137
PALM BEACH GARDENS MEDICAL CTR LAB		1,983	147	7%	2,130
MARTIN MEMORIAL HEALTH SYSTEM LABORATORY		1,937	162	8%	2,099
DOCTORS HOSPITAL	2	1,806	275	13%	2,083
HEALTH PARK MEDICAL CENTER CLINICAL LAB		1,748	334	16%	2,082
NORTH SHORE MEDICAL CENTER		1,635	400	20%	2,035
CORAL GABLES HOSPITAL CLINICAL LABORATORY		1,689	316	16%	2,005
MERCY HOSPITAL A CAMPUS OF PLANTATION GEN HOSP LAB		1,701	259	13%	1,960
FLORIDA HOSPITAL ZEPHYRHILLS		1,890	45	2%	1,935
BIO COLLECTIONS INC	2	1,632	276	14%	1,910
BAPTIST HOSPITAL LABORATORY	4	1,714	160	9%	1,878
PALMS WEST HOSPITAL LAB		1,559	316	17%	1,875
BETHESDA HOSPITAL EAST		1,720	152	8%	1,872
QUEST DIAGNOSTICS NICHOLS	8	1,540	283	15%	1,831
FLORIDA HOSPITAL FLAGLER	2	1,737	75	4%	1,814
NEMOURS CHILDRENS HOSPITAL		1,732	29	2%	1,761
NORTHWEST MEDICAL CENTER		1,519	233	13%	1,752
CARDIOTROPIC LABS		1,443	301	17%	1,744
HALIFAX MEDICAL CENTER LAB	1	1,561	136	8%	1,698
OAK HILL HOSPITAL		1,629	54	3%	1,683
FLORIDA MEDICAL CENTER - A CAMPUS OF NORTH SHORE	2	1,488	189	11%	1,679
LAKELAND MEDICAL CENTER		1,522	137	8%	1,659
ELABNETWORK		1,409	162	10%	1,571
ST JOSEPHS NORTH HOSPITAL LAB		1,448	114	7%	1,562
IMPERIAL POINT MEDICAL CENTER		1,461	95	6%	1,556
Capital Regional Medical Ctr		1,310	222	14%	1,532
OPTEO LABORATORY		1,500	24	2%	1,524
BLAKE MEDICAL CENTER		1,331	179	12%	1,510
MORTON PLANT-MEASE		1,440	65	4%	1,505
FLORIDA HOSPITAL OF CARROLLWOOD		1,345	113	8%	1,458
DR. P. PHILLIPS HOSPITAL		1,441	8	1%	1,449
NORTHSIDE HOSPITAL AND HEART INSTITUTE		1,219	211	15%	1,430
WESTCHESTER HOSPITAL	10	1,179	189	14%	1,378
WEST FLORIDA HOSPITAL LAB		1,251	124	9%	1,375
REGIONAL MEDICAL CENTER BAYONET POINT	1	1,318	49	4%	1,368

Coronavirus: testing by laboratory

Data through Jun 30, 2020 verified as of Jul 1, 2020 at 09:25 AM

Data in this report are provisional and subject to change.

The numbers in the table below represent the number for whom test results were received by the Department of Health. A person can be tested by more than one laboratory and can have both positive and negative results. **Therefore, the sum of the numbers in each column will be larger than the total number of people tested.**

Reporting lab	Inconclusive	Negative	Positive	Percent positive	Total
BAPTIST MEDICAL CENTER - BEACHES		1,318	33	2%	1,351
SOUTH LAKE HOSPITAL CLINICAL LAB		1,329	14	1%	1,343
OCALA REGIONAL MEDICAL CENTER		1,264	52	4%	1,316
POINCIANA MEDICAL CENTER		1,015	298	23%	1,313
FLORIDA HOSPITAL DELAND		1,167	145	11%	1,312
Quest Diagnostics	3	1,065	240	18%	1,308
PLANTATION GENERAL HOSPITAL		1,048	191	15%	1,239
HIALEAH HOSPITAL	3	910	310	25%	1,223
WEST MARION COMMUNITY HOSPITAL LAB		1,113	110	9%	1,223
SOUTH FLORIDA BAPTIST HOSPITAL MICRO		1,087	117	10%	1,204
CLINICORE LABS		1,111	88	7%	1,199
LEESBURG REGIONAL MEDICAL CENTER		1,103	87	7%	1,190
FLORIDA HOSPITAL NORTH PINELLAS	5	1,115	51	4%	1,171
BAPTIST MEDICAL CENTER - NASSAU		1,135	21	2%	1,156
GULF COAST MEDICAL CENTER LAB		1,061	91	8%	1,152
ST VINCENT'S MEDICAL CENTER - SOUTHSIDE		1,116	20	2%	1,136
MEMORIAL HOSPITAL PEMBROKE	2	1,037	89	8%	1,128
LAKE CITY MEDICAL CENTER		969	153	14%	1,122
PHYSICIANS REGIONAL MEDICAL CENTER - PINE RIDGE RD		937	172	16%	1,109
ST PETERSBURG GENERAL HOSPITAL		862	246	22%	1,108
UNIVERSITY OF MIAMI HOSPITAL	5	749	353	32%	1,107
VISTA CLINICAL		736	360	33%	1,096
CENTRAL FLORIDA REGIONAL HOSPITAL		1,002	65	6%	1,067
WEST PALM HOSPITAL LAB		922	107	10%	1,029
MILLENNIUM PHYSICIAN GROUP		821	164	17%	985
SOUTH SEMINOLE HOSPITAL LABORATORY		967	15	2%	982
LMHS		901	74	8%	975
DOCTORS HOSPITAL OF SARASOTA CLINICAL LABORATORY		885	55	6%	940
FORT WALTON BEACH MEDICAL CENTER		823	93	10%	916
UNIVERSITY HOSPITAL AND MEDICAL CENTER		781	125	14%	906
CITRUS MEMORIAL HOSPITAL LABORATORY		850	15	2%	865
MEASE DUNEDIN HOSPITAL		822	40	5%	862
MEMORIAL HOSPITAL MICRO		787	57	7%	844
ORLANDO VA MEDICAL CENTER		791	49	6%	840
VIKOR SCIENTIFIC	2	592	224	27%	818
PHYSICIANS REGIONAL MEDICAL CENTER - COLLIER BLVD	1	691	124	15%	816
APPLIED INGENUITY DIAGNOSTICS LLC		785	18	2%	803
QUEST DIAGNOSTICS - MIRAMAR	6	267	530	66%	803
LOWER KEYS MEDICAL CENTER		769	27	3%	796
BAYFRONT MEDICAL CENTER		589	174	23%	763
FLORIDA HOSPITAL FISH MEMORIAL		672	75	10%	747
FLORIDA HOSPITAL ORLANDO		745	1	0%	746
BAPTIST NORTH EMERGENCY CENTER		630	101	14%	731
BAPTIST HEALTH EMERGENCY CENTER COUNTRY WALK		616	107	15%	723
BETHESDA HOSPITAL WEST		678	42	6%	720
SOUTH BAY HOSPITAL MICRO		642	74	10%	716
ADVENTHEALTH OCALA LABORATORY		684	18	3%	702

Coronavirus: testing by laboratory

Data through Jun 30, 2020 verified as of Jul 1, 2020 at 09:25 AM

Data in this report are provisional and subject to change.

The numbers in the table below represent the number for whom test results were received by the Department of Health. A person can be tested by more than one laboratory and can have both positive and negative results. **Therefore, the sum of the numbers in each column will be larger than the total number of people tested.**

Reporting lab	Inconclusive	Negative	Positive	Percent positive	Total
HealthSentry_NCH		603	81	12%	684
HIGHLANDS REGIONAL MEDICAL CENTER		591	63	10%	654
QUEST DIAGNOSTICS INFECTIOUS DISEASE INC		268	379	59%	647
BARTOW REGIONAL MEDICAL CENTER		585	61	9%	646
CernerELR_Jupiter		548	91	14%	639
PALMS OF PASADENA HOSPITAL		581	58	9%	639
THE VILLAGES REGIONAL HOSPITAL		614	24	4%	638
CLEVELAND CLINIC TRADITION HOSPITAL		543	81	13%	624
PUTNAM COMMUNITY MEDICAL CENTER		571	29	5%	600
VISTA CLINICAL DIAGNOSTICS		352	241	41%	593
CAPSTONE HEALTHCARE		398	185	32%	583
BMCT Molecular Diagnostics Subsection		486	91	16%	577
BAPTIST EMERGENCY CENTER OAKLEAF		475	88	16%	563
MEDCOMP SCIENCES LLC	14	381	160	29%	555
AVENTUS BIOLABS	1	366	176	32%	543
LAKESIDE MEDICAL CENTER		339	197	37%	536
QUEST DIAGNOSTICS - IRVING	6	366	158	30%	530
SYNERGY LABORATORIES	1	510	17	3%	528
TWIN CITIES HOSPITAL		501	15	3%	516
EGLIN AIRFORCE BASE LAB		477	38	7%	515
ORLANDO HEALTH		10	502	98%	512
RAULERSON HOSPITAL		444	58	12%	502
ENGLEWOOD COMMUNITY HOSPITAL		478	18	4%	496
QUEST NEW ENGLAND	1	467	24	5%	492
MARTIN MEMORIAL HEALTH SYSTEMS LABORATORY		447	40	8%	487
ARUP		433	12	3%	445
GULF BREEZE HOSPITAL LAB	1	423	20	5%	444
MAKO MEDICAL LABORATORIES	6	193	236	54%	435
MedHost_Larkin		348	56	14%	404
PATIENTS CHOICE LABORATORIES		174	209	55%	383
QUEST	1	81	291	78%	373
QUEST DIAGNOSTICS NICHOLS INSTITUTE	5	348	15	4%	368
LEE MEMORIAL HOSPITAL LAB			362	100%	362
CernerELR_SacredHeart		314	47	13%	361
VAMC ORLANDO		284	72	20%	356
ACCESS MEDICAL LABORATORIES		93	262	74%	355
LAB24 INC			344	100%	344
QUEST DIAGNOSTICS - ATLANTA		291	40	12%	331
BROWARD HEALTH		320			320
MARINERS HOSPITAL		285	31	10%	316
QUEST DIAGNOSTICS WOOD DALE		289	22	7%	311
ACCESSDX	2	171	137	44%	310
DAVITA LABS		280	26	8%	306
BAPTIST EMERGENCY CENTER CLAY		291	15	5%	306
SACRED HEART-EMERALD COAST		255	46	15%	301
APPLIED INGENUITY DIAGNOSTICS		271	22	8%	293
AVERO DIAGNOSTICS - IRVING		273	18	6%	291

Coronavirus: testing by laboratory

Data through Jun 30, 2020 verified as of Jul 1, 2020 at 09:25 AM

Data in this report are provisional and subject to change.

The numbers in the table below represent the number for whom test results were received by the Department of Health. A person can be tested by more than one laboratory and can have both positive and negative results. **Therefore, the sum of the numbers in each column will be larger than the total number of people tested.**

Reporting lab	Inconclusive	Negative	Positive	Percent positive	Total
CLARITY LABS		237	50	17%	287
QUEST DIAGNOSTICS - WEST HILLS		262	12	4%	274
SOUTHEAST ALABAMA MEDICAL CENT		256	11	4%	267
AMERICAN HEALTH ASSOCIATES	1	42	209	83%	252
DYNIX DIAGNOSTICS		184	66	26%	250
JACKSON HOSPITAL LAB		218	20	8%	238
ECCOLAB GROUP		70	168	71%	238
NCH NORTHEAST		162	68	30%	230
LABCORP RTP	1	36	191	84%	228
MEMORIAL PEMBROKE 24/7 CARE CENTER		184	39	17%	223
MAKO GENOMICS		215	7	3%	222
BARDMOOR LABORATORY		198	20	9%	218
LABONE LLC DBA QUEST DIAGNOSTICS	1	197	19	9%	217
HealthSentry_BrowardHealth		193	23	11%	216
PHYSICIANS STAT LAB		132	83	39%	215
NEW YORK STATE ELR - LENCO MEDICAL LABORATORY		197	11	5%	208
HealthSentry_CMH		205	2	1%	207
NCH HEALTHCARE BONITA		168	37	18%	205
GENESIS REFERENCE LABORATORIES		1	191	99%	192
CLEVELAND CLINIC		187	5	3%	192
HEALTHQUEST ESOTERICS		63	129	67%	192
FLORIDA_HOSPITAL (DON'T USE)			189	100%	189
NCH HEALTHCARE SYSTEM MICROBIOLOGY LAB			188	100%	188
PWN HEALTH		71	113	61%	184
MEDSCAN LABORATORY INC		135	49	27%	184
UAB HIGHLANDS LABORATORY		183			183
LUMINUS DIAGNOSTICS		138	36	21%	174
BIOREFERENCE LABORATORIES		14	158	92%	172
CORE DIAGNOSTIC LABORATORIES LLC		149	18	11%	167
JACKSON HOSPITAL CLINICAL LABORATORY		153	7	4%	160
FLO-MEDILAB SERVICES		54	103	66%	157
TAMPA COMMUNITY HOSPITAL		117	39	25%	156
NEW YORK STATE ELR - DEPARTMENT OF CLINICAL LABS		145	4	3%	149
LAB CORP		53	93	64%	146
GENESIS MEDICAL LABORATORY MIAMI FL.		78	68	47%	146
ST CLOUD REGIONAL MEDICAL CENTER		118	28	19%	146
HENDRY REGIONAL MEDICAL CENTER		2	139	99%	141
THERADOC		125	16	11%	141
NCF DIAGNOSTICS & DNA TECHNOLOGIES	7	14	118	85%	139
LABCORP		18	118	87%	136
BAPTIST MD ANDERSON CANCER CENTER		131			131
NEW YORK STATE ELR - NORTH SHORE LONG ISLAND JEWISH HEALTH		116	13	10%	129
TENNESSEE DOH - NASHVILLE	1	114	12	9%	127
ORLANDO VAMC		79	45	36%	124
INFORM DIAGNOSTICS		122			122
BMHSI-AEL MICROBIOLOGY LABORATORY	2	102	18	15%	122
MEMPHIS PATHOLOGY LABORATORY		118	4	3%	122

Coronavirus: testing by laboratory

Data through Jun 30, 2020 verified as of Jul 1, 2020 at 09:25 AM

Data in this report are provisional and subject to change.

The numbers in the table below represent the number for whom test results were received by the Department of Health. A person can be tested by more than one laboratory and can have both positive and negative results. **Therefore, the sum of the numbers in each column will be larger than the total number of people tested.**

Reporting lab	Inconclusive	Negative	Positive	Percent positive	Total
MILLENNIUM PATHOLOGY			113	100%	113
PATHGROUP LABS LLC		84	29	26%	113
ALLIED HEALTH FORT PIERCE		112			112
LABCORP TAMPA		14	95	87%	109
INTEGRATED REGIONAL LABORATORIES		99	10	9%	109
NEW YORK STATE ELR - NYU HOSPITALS CENTER CLINICAL LABORATORIES		103	4	4%	107
ASAP LAB LLC		90	16	15%	106
QUALITOX LABORATORIES		93	10	10%	103
LEHIGH REGIONAL MEDICAL CENTER LAB		90	12	12%	102
UAB UNIVERSITY OF ALABAMA HOSPITAL LAB		93	3	3%	96
NEO GENOMICS - FORT MYERS		92	1	1%	93
DIAGNOSTIC SOLUTIONS		3	90	97%	93
LABTECH DIAGNOSTIC		83	9	10%	92
IRL MARKET LAB		60	31	34%	91
PALM BEACH COUNTY HEALTH DEPT LAB		91			91
SANFORD REFERENCE LAB		91			91
ORLANDO VETERANS AFFAIRS MEDICAL CENTER		32	56	64%	88
ROSEN MEDICAL CENTER		82	4	5%	86
JAY HOSPITAL CLINICAL LABORATORY		78	6	7%	84
BOSTON HEART DIAGNOSTICS CORP		81	3	4%	84
ACUTIS DIAGNOSTICS		80	4	5%	84
RCA LABORATORY SERVICES, LLC		50	33	40%	83
ASCEND CLINICAL		80	3	4%	83
UNKNOWN		7	75	91%	82
NEW YORK STATE ELR - NEW YORK PRESBYTERIAN HOSPITAL CUMC CLINICAL		70	11	14%	81
SMA SPECIALITY MEDICAL LAB		43	37	46%	80
FLAGLER HOSPITAL	3	15	61	77%	79
VAMC WEST PALM LAB			79	100%	79
SPARROW HEALTHCARE		1	77	99%	78
GENETWORKX		15	63	81%	78
BUREAU OF CLINICAL LABORATORIES		66	11	14%	77
BIOCERNA LLC	2	58	15	20%	75
MICROGEN DX		1	73	99%	74
PATHNOSTICS		21	53	72%	74
HOLY CROSS HOSPITAL LABORATORY			73	100%	73
FLORIDA HOSPITAL WAUCHULA		38	34	47%	72
SUNRISE MEDICAL LABORATORIES		48	23	32%	71
Highlands Regional Hospital		63	5	7%	68
CENTRAL FLORIDA HEALTH CARE		46	21	31%	67
USAFSAM/PHE		23	43	65%	66
JAMES A. HALEY VETERANS MICRO LAB			64	100%	64
BAY PINES VAMC CLINICAL LABORATORY		1	62	98%	63
DAVITA LABORATORY SERVICES		48	14	23%	62
VETERANS AFFAIRS MEDICAL CENTER LAB			60	100%	60
NEW YORK STATE ELR - NEW YORK HOSPITAL LABORATORIES		56	4	7%	60
MARTIN MEMORIAL LABORATORY AT ST LUCIE WEST		54	4	7%	58
NEW YORK STATE ELR - MOUNT SINAI LABORATORY		52	5	9%	57

Coronavirus: testing by laboratory

Data through Jun 30, 2020 verified as of Jul 1, 2020 at 09:25 AM

Data in this report are provisional and subject to change.

The numbers in the table below represent the number for whom test results were received by the Department of Health. A person can be tested by more than one laboratory and can have both positive and negative results. **Therefore, the sum of the numbers in each column will be larger than the total number of people tested.**

Reporting lab	Inconclusive	Negative	Positive	Percent positive	Total
CAREMOUNT MEDICAL - PATHOLOGY		56	1	2%	57
HOLY CROSS HOSPITAL		1	54	98%	55
ADVENT HEALTH DAYTONA		1	54	98%	55
MEDICAL DIAGNOSTICS LABORATORIES,INC		15	40	73%	55
STEWARD REFERENCE LABORATORY			54	100%	54
FLORIDA COMMUNITY HEALTH CENTERS INC			53	100%	53
VAMC LAKE CITY		51	1	2%	52
FLORIDA HOSPITAL HEARTLAND MED CTR LAKE PLACID		42	9	18%	51
QUEST DIAGNOSTICS LENEXA		49	2	4%	51
P4 DIAGNOSTIX LABORATORY NETWORK		1	48	98%	49
BROWARD HEALTH MEDICAL CENTER		1	48	98%	49
GENE BY GENE			49	100%	49
MARTIN MEMORIAL MEDICAL CENTER LAB		10	38	79%	48
SARASOTA CO. HEALTH DEPT # 58		36	11	23%	47
H LEE MOFFITT CANCER CENTER MICRO		46			46
BIOREFERENCE LABORATORY		1	44	98%	45
ST JUDE CHILDREN'S RESEARCH HOSPITAL		41	2	5%	43
UR MEDICINE LABS- CENTRAL LABORATORY		42			42
VAMC BAY PINES			42	100%	42
HOLMES REGIONAL MEDICAL CENTER		3	37	93%	40
HURLBURT FIELD CLINIC		23	17	43%	40
BAYCARE LAB		1	38	97%	39
BAPTIST HEALTH SOUTH FLORIDA		3	36	92%	39
FISHERMENS HOSPITAL CLINICAL LAB		37	1	3%	38
FINLAY CLINICAL LABORATORY		24	14	37%	38
UNITED CLINICAL LABORATORY LLC			37	100%	37
GESSLER CLINIC			37	100%	37
LABCORP BURLINGTON (LPP)		9	27	75%	36
P4 CLINICAL, LLC			35	100%	35
MILLENNIUM LAB SERVICES			35	100%	35
NEW YORK STATE ELR - WADSWORTH HEALTH CENTER		32	3	9%	35
ST. CLOUD MEDICAL GROUP		35			35
QUEST TAMPA (NEW YORK ELR)		29	6	17%	35
Assurance Scientific Laboratories		26	8	24%	34
NAVY HOSPITAL			34	100%	34
VHA PUBLIC HEALTH REFERENCE LABORATORY- PALO ALTO		27	7	21%	34
IRL		4	30	88%	34
ORLANDO VA PALMS		2	31	94%	33
FLORIDA LABORATORY ANALYSIS		26	7	21%	33
FLORIDA HOSPITAL NEW SMYRNA		4	28	88%	32
QUEST DIAGNOSTICS-VERO BEACH-37TH ST		31			31
BioReference Laboratories, Inc		21	10	32%	31
MORTON PLANT HOSPITAL			31	100%	31
PROVIDENCE HOSPITAL LABORATORY		30			30
EAST MANATEE FAMILY	1		28	97%	29
SACRED HEART HOSPITAL ON THE GULF		24	5	17%	29
STATEN ISLAND UNIVERSITY HOSPITAL-POUCH		27	2	7%	29

Coronavirus: testing by laboratory

Data through Jun 30, 2020 verified as of Jul 1, 2020 at 09:25 AM

Data in this report are provisional and subject to change.

The numbers in the table below represent the number for whom test results were received by the Department of Health. A person can be tested by more than one laboratory and can have both positive and negative results. **Therefore, the sum of the numbers in each column will be larger than the total number of people tested.**

Reporting lab	Inconclusive	Negative	Positive	Percent positive	Total
AVERO DIAGNOSTICS		27	1	4%	28
NEW YORK STATE ELR - ENZO CLINICAL LABS INC		27	1	4%	28
CLINICAL REFERENCE LABORATORY		24	4	14%	28
HOSPITAL FOR SPECIAL SURGERY		26	1	4%	27
TRADITION MEDICAL CENTER LABORATORY		7	20	74%	27
MILLENIUM PHYSICIANS GROUP			27	100%	27
FINLAY CLINICAL LABORATORY INC		26	1	4%	27
SOUTH LAKE HOSPITAL		1	26	96%	27
LAB CORP TAMPA			27	100%	27
NEW YORK STATE ELR - EMPIRECITY LABORATORIES		23	3	12%	26
CDC		17	9	35%	26
EXPRESS GENE MOLECULAR DIAGNOSTIC LABORATORY			25	100%	25
FULGENT DIAGNOSTICS	2	21	2	8%	25
MORTON PLANT HOSPITAL/LAB		1	24	96%	25
TAMPA GENERAL HOSPITAL CLINICAL LAB			25	100%	25
P4CLINICAL	3	1	20	83%	24
SOLARIS DIAGNOSTICS		1	23	96%	24
QUEST DIAGNOSTIC INC		2	22	92%	24
C.W. BILL YOUNG VA MEDICAL CENTER		3	21	88%	24
LABORATORY DYNAMICS		20	3	13%	23
ORLANDO REGIONAL MEDICAL CENTER		1	22	96%	23
LABORATORY CORP OF AMERICA	1	4	18	78%	23
ST. ANTHONY'S HOSPITAL			22	100%	22
LAB CORP RTP	1	2	19	86%	22
PENNSYLVANIA DEPT OF HEALTH		19	3	14%	22
UNIVERSITY OF MIAMI HOSPITAL & CLINICS		19	3	14%	22
CAPITAL REGIONAL MEDICAL CENTER		1	20	95%	21
HUNTSVILLE HOSPITAL LABORATORY		18	3	14%	21
ALL CHILDREN'S HOSPITAL LAB		1	20	95%	21
QUEST DIAGNOSTICS NICHOLS INSTITUTE- LPP		3	17	85%	20
INTEGRITY LABORATORIES			20	100%	20
BAYCARE HEALTH SYSTEM		1	19	95%	20
BROWARD HEALTH CORAL SPRINGS EPIDEMIOLOGY DEPT			20	100%	20
ST. CLOUD HOSPITAL		20			20
MIAMI BEACH COMMUNITY HEALTH CENTER			19	100%	19
NEW YORK STATE ELR - NEWYORK-PRESBYTERIAN/QUEENS DIAGNOSTIC		19			19
INTEGRATED REGIONAL LABORATORIES - LARGO			19	100%	19
JACKSON MEMORIAL HOSPITAL			19	100%	19
UNKNOWN - BAD FACILITY CODE		2	17	89%	19
ST JOSEPHS CHILDRENS OUTREACH			19	100%	19
ST. MARY'S MEDICAL CENTER LAB			19	100%	19
EGLIN REGIONAL MEDICAL CENTER		4	15	79%	19
ST VINCENT'S BIRMINGHAM LABORATORY		19			19
MED HEALTH SERVICES		18			18
QUEST DIAGNOSTICS INC.			18	100%	18
STONE WASH CLINICAL LABORATORIES		2	16	89%	18
CLEVELAND CLINIC FOUNDATION		9	8	47%	17

Coronavirus: testing by laboratory

Data through Jun 30, 2020 verified as of Jul 1, 2020 at 09:25 AM

Data in this report are provisional and subject to change.

The numbers in the table below represent the number for whom test results were received by the Department of Health. A person can be tested by more than one laboratory and can have both positive and negative results. **Therefore, the sum of the numbers in each column will be larger than the total number of people tested.**

Reporting lab	Inconclusive	Negative	Positive	Percent positive	Total
MAVERICK LABS			17	100%	17
MACDILL AIRFORCE BASE MICRO		14	3	18%	17
FAWCETT MEMORIAL HOSPITAL-LAB		1	16	94%	17
NEW YORK STATE ELR - MONTEFIORE MEDICAL CENTER LABORATORIES - MOSES		12	5	29%	17
KENDALL REGIONAL MEDICAL CENTER LAB			17	100%	17
WATSON CLINIC LLP SOUTH			17	100%	17
VA		15	1	6%	16
POPLAR HEALTHCARE PLLC	1	10	5	31%	16
CHILDREN'S HOSPITAL OF ALABAMA		16			16
MIAMI VA HEALTHCARE SYSTEM			16	100%	16
LABFIRST - DEPARTMENT OF PATHOLOGY		16			16
FLORIDA CLINICAL LABORATORY-BIOREFERENCE LABORATORIES		2	13	87%	15
PALO ALTO VA MEDICAL CENTER		1	14	93%	15
MEDARBOR DIAGNOSTICS		1	14	93%	15
DIATHERIX		13	2	13%	15
QUESTDIAGNOSTICS INCORPORATED		1	14	93%	15
PHYSICIANS REGIONAL HEALTHCARE SYSTEM			14	100%	14
HEALTH FIRST-HOLMES REGIONAL			14	100%	14
Main Lab		1	13	93%	14
Tennessee_DOH		12	2	14%	14
IPSUM DIAGNOSTICS			14	100%	14
PATRICK AIR FORCE BASE		1	13	93%	14
PACIFIC ANALYTICS			14	100%	14
TIDE LABORATORIES		3	10	77%	13
NEW YORK STATE ELR - STONY BROOK UNIVERSITY MEDICAL CENTER		10	3	23%	13
CENTRA CARE			13	100%	13
VA MEDICAL CENTER		5	8	62%	13
QUEST DIAGNOSTICS NICHOLS INSTITUTE - SJC (LPP)		9	4	31%	13
UNITED CLINICAL LABS			13	100%	13
XERA MED RESEARCH			13	100%	13
GENPATH			13	100%	13
SMA MEDICAL LABORATORY		8	5	38%	13
FLORIDA DEPARTMENT OF HEALTH		9	4	31%	13
QUEST DIAGNOSTICS INCORPORATED			13	100%	13
GRAVITY DIAGNOSTICS		9	4	31%	13
ADVENT HEALTH FISH MEMORIAL		2	11	85%	13
LABORATORY SPECIALISTS OF MICHIGAN			12	100%	12
PROTEUS MOLECULAR AND CLINICAL LAB		8	4	33%	12
CORE DIAGNOSTIC LABORATORIES			12	100%	12
MEDCOMP SCIENCES			12	100%	12
ST. JOSEPHS HOSPITAL			12	100%	12
NEW YORK STATE ELR - KALEIDA HEALTH CENTER FOR LABORATORY		9	3	25%	12
NEW YORK STATE ELR - WHITE PLAINS HOSPITAL CENTER LAB		12			12
NEW YORK STATE ELR - BROOKDALE UNIVERSITY HOSPITAL		12			12
BROWARD DIALYSIS			12	100%	12
ADVANCED URGENT CARE		10	2	17%	12
PARRISH MEDICAL CENTER		1	11	92%	12

Coronavirus: testing by laboratory

Data through Jun 30, 2020 verified as of Jul 1, 2020 at 09:25 AM

Data in this report are provisional and subject to change.

The numbers in the table below represent the number for whom test results were received by the Department of Health. A person can be tested by more than one laboratory and can have both positive and negative results. **Therefore, the sum of the numbers in each column will be larger than the total number of people tested.**

Reporting lab	Inconclusive	Negative	Positive	Percent positive	Total
WHITE WILSON MEDICAL CENTER CLINIC			12	100%	12
MOBILE INFIRMARY MED CENTER PATH LAB		10	1	9%	11
MEDICAL DIAGNOSTIC LAB		1	10	91%	11
CENTRACARE			11	100%	11
OUT OF STATE		11			11
AMERICAN ESOTERIC LABORATORIES			11	100%	11
LAB INTERMARKET FACILITY LAB			11	100%	11
LABCORP BIRMINGHAM		4	7	64%	11
INDIAN RIVER MEDICAL CENTER		11			11
FLORIDA DEPT OF HEALTH		4	7	64%	11
QDX PATHOLOGY SERVICES		10	1	9%	11
UHEALTH CORAL GABLES/LENNAR MED CTR		9	2	18%	11
NEW YORK STATE ELR - LENOX HILL HOSPITAL		10	1	9%	11
BAY MEDICAL CENTER SACRED HEART HEALTH SYSTEM			11	100%	11
DEPARTMENT OF VETERANS AFFAIRS JAMES A. HALEY VETERANS HOSPITAL			10	100%	10
SUNQUEST		2	8	80%	10
NEW YORK STATE ELR - CATHOLIC HEALTH SYSTEM DEPT LABORATORY		10			10
DESOTO MEMORIAL HOSPITAL LAB			10	100%	10
NEW JERSEY DEPARTMENT OF HEALTH COMMUNICABLE DISEASE SERVICE		3	7	70%	10
LAKE BALDWIN CBOC		9	1	10%	10
PARKWEST MEDICAL CENTER		9	1	10%	10
MADISON CORE LABORATORIES		9	1	10%	10
BROWARD HEALTH CARE			10	100%	10
CITRUS MEMORIAL HEALTH SYSTEM LAB		1	8	89%	9
ST FRANCIS HOSPITAL		6	3	33%	9
MICHIGAN DEPARTMENT OF HEALTH AND HUMAN SERVICES			9	100%	9
DOCTORS MEMORIAL HOSPITAL		6	3	33%	9
NEW YORK STATE ELR - QUEST DIAGNOSTICS INCORPORATED		6	3	33%	9
NIGHT LITE PEDIATRICS		1	8	89%	9
UVMMC MICROBIOLOGY		9			9
MED ARBOR			9	100%	9
ST. JOSEPH HOSPITAL LAB			9	100%	9
PARK WEST MEDICAL CENTER		9			9
LABCORP - MIAMI		4	5	56%	9
HEALTH CENTRAL HOSPITAL			9	100%	9
UNIVERSITY HEALTH SYSTEM INC		9			9
ESCAMBIA COMMUNITY CLINIC			9	100%	9
CAPE CANAVERAL HOSPITAL			9	100%	9
CORE LABORATORY		1	8	89%	9
ST MARY'S MEDICAL CENTER		1	7	88%	8
THE COMMONWEALTH OF MASSACHUSETTS			8	100%	8
JACKSON NORTH MEDICAL CENTER		1	7	88%	8
ST JOSEPHS HOSPITAL			8	100%	8
FLORIDA COMMUNITY HEALTH CENTER OF ST. LUCIE			8	100%	8
MDLAB			8	100%	8
EXPERTUS LABORATORIES INC		8			8
PATIENTS FIRST - MAHAN DRIVE			8	100%	8

Coronavirus: testing by laboratory

Data through Jun 30, 2020 verified as of Jul 1, 2020 at 09:25 AM

Data in this report are provisional and subject to change.

The numbers in the table below represent the number for whom test results were received by the Department of Health. A person can be tested by more than one laboratory and can have both positive and negative results. **Therefore, the sum of the numbers in each column will be larger than the total number of people tested.**

Reporting lab	Inconclusive	Negative	Positive	Percent positive	Total
MIAMI VAMC			8	100%	8
CONSOLIDATED LAB SERVICES		8			8
JACKSON HEALTH SYSTEM			8	100%	8
GENEUS DIAGNOSTICS			8	100%	8
LAB PLUS, LLC AT SAINT THOMAS WEST HOSPITAL		6	2	25%	8
BIO-REFERENCE LABORATORIES			8	100%	8
LABCORP - CLEARWATER			8	100%	8
MOFFITT CANCER CENTER		6	2	25%	8
VIERA HOSPITAL			7	100%	7
ARTHREX MEDICAL CENTER			7	100%	7
PALM BAY HOSPITAL		1	6	86%	7
LONGLEAF DIAGNOSTIC LABORATORIES		2	5	71%	7
USA HEALTH UNIVERSITY HOSPITAL CLINICAL LABORATORY		7			7
AEL- MEMPHIS			7	100%	7
NEW YORK STATE ELR - ROCHESTER GENERAL HOSPITAL LABORATORY		6	1	14%	7
WATSON CLINIC LLP MAIN			7	100%	7
BAYCARE OUTREACH LABORATORY SERVICES		1	6	86%	7
QUEST INFECTIOUS DISEASE		3	4	57%	7
SEVEN RIVERS REGIONAL MEDICAL CENTER			7	100%	7
BIO REFERNCE LABORATORIES		2	5	71%	7
NEW YORK STATE ELR - UNIVERSITY HOSPITAL, STONY BROOK SOUTHAMPTON		7			7
Quest Diag Unspecifd		2	5	71%	7
MAYO CLINIC DEPT OF LAB MED PATHOLOGY			7	100%	7
MACDILL AFB HOSPITAL		1	6	86%	7
NO NAME		5	2	29%	7
NORTH BAY HOSPITAL			6	100%	6
VAMC GAINESVILLE		2	4	67%	6
ALL CHILDREN'S HOSPITAL/LAB			6	100%	6
ASSOCIATED CLINICAL LABORATORIES		6			6
DIAGNOSTIC LABORATORY OF OKLAHOMA		6			6
PANCARE OF FLORIDA, INC			6	100%	6
DEVANSH LAB WERKS INC		5	1	17%	6
SACRED HEART HEALTH SYSTEM			6	100%	6
DYNAMIC DNA LAB			6	100%	6
SOUTHEAST ALABAMA MEDICAL CENTER			6	100%	6
SHORELINE PHYSICIAN GROUP			6	100%	6
NEW YORK STATE ELR - JAMAICA HOSPITAL MEDICAL CENTER		6			6
MICHIGAN DEPARTMENT OF COMMUNITY HEALTH		1	5	83%	6
NORTH SHORE UNIVERSITY HOSPITAL LABORATORY		6			6
AMERICAN PATHOLOGY PARTNERS		5	1	17%	6
GRAVITY DIAGNOSTICS, LLC		2	4	67%	6
VENICE REGIONAL MEDICAL CENTER			6	100%	6
PRIDE DIAGNOSTICS		6			6
LEON MEDICAL CENTER			6	100%	6
NAVAL HOSPITAL - JACKSONVILLE		1	5	83%	6
NEW YORK STATE ELR - JAMES J PETERS VA MEDICAL CENTER		4	2	33%	6
STATE LAB		1	5	83%	6

Coronavirus: testing by laboratory

Data through Jun 30, 2020 verified as of Jul 1, 2020 at 09:25 AM

Data in this report are provisional and subject to change.

The numbers in the table below represent the number for whom test results were received by the Department of Health. A person can be tested by more than one laboratory and can have both positive and negative results. **Therefore, the sum of the numbers in each column will be larger than the total number of people tested.**

Reporting lab	Inconclusive	Negative	Positive	Percent positive	Total
PERSONALIZED GENETIC TESTING			6	100%	6
ARCHBOLD MEMORIAL HOSPITAL/LAB		3	3	50%	6
ST JOSEPH HOSPITAL		5	1	17%	6
FLORIDA DEPARTMENT OF HEALTH IN LAKE COUNTY		3	3	50%	6
DELRAY MEDICAL CENTER LAB			6	100%	6
UPMC CHAUTAUQUA AT WCA LABORATORY		5			5
TRUE HEALTH DIAGNOSTICS		1	4	80%	5
ACCU REFERENCE MEDICAL LAB			5	100%	5
TAMIAMI LAB MILLENNIUM			5	100%	5
CHILDREN'S HOSPITAL OF PHILADELPHIA		5			5
BIOTECH			5	100%	5
XRL SXF REF LAB		5			5
LECONTE MEDICAL CENTER LAB		4	1	20%	5
HEALTH FIRST-PALM BAY			5	100%	5
NEW YORK STATE ELR - WILSON MEMORIAL REGIONAL MEDICAL CENTER		5			5
LEE MEMORIAL LAB GULF COAST			5	100%	5
US BIOTEK LABORATORIES			5	100%	5
LABCORP INC		1	4	80%	5
DOCTOR'S IN HOUSE LAB			5	100%	5
NEW YORK STATE ELR - GOOD SAMARITAN HOSPITAL LABORATORY		5			5
BAPTIST SOUTH MEDICAL CENTER		1	4	80%	5
CLINICAL PATHOLOGY LABORATORIES, INC.			5	100%	5
EAST ALABAMA MEDICAL CENTER LABORATORY		5			5
ST ANTHONY NORTH			5	100%	5
ST. JOSEPH'S HOSPITAL LAB			5	100%	5
ST VINCENT'S EAST LABORATORY		5			5
SANFORD LABORATORIES		5			5
NORTHWELL HEALTH PLAINVIEW HOSPITAL LABORATORY		4	1	20%	5
BAPTIST CLAY			5	100%	5
SMA LAB		3	2	40%	5
PATHOGENIUS LABORATORIES		2	3	60%	5
SOUTH SEMINOLE HOSPITAL		1	4	80%	5
LEE COUNTY HEALTH DEPARTMENT		4	1	20%	5
ST VINCENTS MEDICAL CENTER RIVERSIDE NURSING			5	100%	5
BROWARD COUNTY HEALTH DEPT.			5	100%	5
AEL KNOXVILLE			5	100%	5
JFK MEDICAL CENTER NORTH LAB			5	100%	5
AMERICAN HEALTH ASSOCIATES OF TAMPA			5	100%	5
PENSACOLA PEDIATRICS			5	100%	5
CONNECTICUT DEPARTMENT OF HEALTH		4	1	20%	5
NEW YORK STATE ELR - HUDSON VALLEY HOSPITAL CENTER LABORATORY		3	1	25%	4
VAMC			4	100%	4
PROMEDICA LABORATORIES		4			4
DAVITA LABORATORY		4			4
LAKELAND REGIONAL HEALTH			4	100%	4
NEW YORK STATE ELR - VASSAR BROTHERS MEDICAL CENTER LABORATORY		4			4
NEW YORK STATE ELR - ST PETER'S BENDER LABORATORY		4			4

Coronavirus: testing by laboratory

Data through Jun 30, 2020 verified as of Jul 1, 2020 at 09:25 AM

Data in this report are provisional and subject to change.

The numbers in the table below represent the number for whom test results were received by the Department of Health. A person can be tested by more than one laboratory and can have both positive and negative results. **Therefore, the sum of the numbers in each column will be larger than the total number of people tested.**

Reporting lab	Inconclusive	Negative	Positive	Percent positive	Total
MISSOURI DEPARTMENT OF HEALTH AND SENIOR SERVICES			4	100%	4
EXPRESS TESTING-ONE			4	100%	4
FINLAY C. LABORATORY		3	1	25%	4
UPMC HEALTH SYSTEM		4			4
QUEST DIAGNOSTICS- MELBOURNE			4	100%	4
NORTHWEST FLORIDA COMMUNITY HOSPITAL		1	3	75%	4
MERCY HOSPITAL MIAMI LAB			4	100%	4
COMMUNITY HEALTH OF SOUTH FLORIDA			4	100%	4
MEDLOGIC, LLC		4			4
LABCORP BURLINGTON CYTO		3	1	25%	4
CANTON-POTSDAM HOSPITAL LABORATORY		4			4
CAYUGA MEDICAL CENTER AT ITHACA		4			4
LEHIGH VALLEY HOSPITAL		3	1	25%	4
HEALTH FIRST CAPE CANAVERAL HOSPITAL			4	100%	4
ST JOSEPH'S HEALTHLINE		1	3	75%	4
DTR LABS		3	1	25%	4
FLOWERS HOSPITAL		1	3	75%	4
Diatherix Laboratories, LLC		1	3	75%	4
MAYO CLINIC LABS - ROCHESTER SUPERIOR DRIVE			4	100%	4
UMHC/SYLVESTER AT KENDALL			4	100%	4
TGH			4	100%	4
THOMAS JEFFERSON UNIVERSITY HOSPITAL		4			4
THE CENTER FOR URGENT CARE		3	1	25%	4
TRUGENX			4	100%	4
BAY PINES VA		1	3	75%	4
OKLAHOMA STATE UNIVERSITY DIAGNOSTIC LAB			4	100%	4
TENNESSEE DOH		4			4
NEW YORK STATE ELR - CATHOLIC HEALTH SERVICES REGIONAL LABORATORY		2	2	50%	4
HEALTH FIRST-VIERA HOSPITAL			4	100%	4
SEBASTIAN RIVER MEDICAL CENTER		3	1	25%	4
SOUTHEAST FAMILY HEALTHCARE CENTER			4	100%	4
NEW YORK STATE ELR - BROOKLYN HOSPITAL CENTER DOWNTOWN CAMPUS		4			4
BOCA RATON REGIONAL HOSPITAL LAB			4	100%	4
AMERICAN RESEARCH LABS			4	100%	4
LABCORP - NAPLES			4	100%	4
BOND CLINIC			4	100%	4
NONA SCIENTIFIC			4	100%	4
MID-FLORIDA PATHOLOGY		3	1	25%	4
NEW YORK STATE ELR - LOURDES HOSPITAL INC		4			4
VA OUTPATIENT			3	100%	3
BEAUMONT LABORATORY			3	100%	3
BARONESS ERLANGER HOSPITAL		3			3
VENICE REGIONAL MEDICAL LAB SERVICES			3	100%	3
Cleveland Clinic Laboratories		1	2	67%	3
WAKEMED		1	2	67%	3
INDIAN RIVER CHD VERO BEACH		2	1	33%	3
MAYO MEDICAL LABORATORIES		2	1	33%	3

Coronavirus: testing by laboratory

Data through Jun 30, 2020 verified as of Jul 1, 2020 at 09:25 AM

Data in this report are provisional and subject to change.

The numbers in the table below represent the number for whom test results were received by the Department of Health. A person can be tested by more than one laboratory and can have both positive and negative results. **Therefore, the sum of the numbers in each column will be larger than the total number of people tested.**

Reporting lab	Inconclusive	Negative	Positive	Percent positive	Total
PATHGROUP LABS			3	100%	3
UT MEMPHIS UNIVERSITY HEALTH SERVICES		2	1	33%	3
VIRTUA VOORHEES HOSPITAL		3			3
TAMPA GENERAL HOSPITAL LABORATORY			3	100%	3
ASCENSION ST. VINCENT'S PRIMARY CARE			3	100%	3
TYNDALL AFB			3	100%	3
TOM LEE COMMUNITY HEALTH CENTER			3	100%	3
PUBLIC HEALTH LAB		3			3
PENNSYLVANIA DEPARTMENT OF HEALTH BUREAU OF LABORATORIES			3	100%	3
CENTRAL FLORIDA HEALTH CARE INC			3	100%	3
QUEST DIAGNOSTIC			3	100%	3
PALMS WEST HOSPITAL			3	100%	3
MEDICAL LABORATORY DIAGNOSTICS			3	100%	3
GENESIS DIAGNOSTICS			3	100%	3
WESTPAC LABS			3	100%	3
SHELBY COUNTY HEALTH CARE CORPORATION		1	2	67%	3
NEW YORK STATE ELR - SOUTHSIDE HOSPITAL NORTHWELL HEALTH LABORATORY		2	1	33%	3
COLORADO DEPARTMENT OF PUBLIC HEALTH AND ENVIRONMENT			3	100%	3
BAYCARE LABORATORIES			3	100%	3
AVECINA MEDICAL OAKLEAF			3	100%	3
PATIENT'S FIRST			3	100%	3
NEW YORK STATE ELR - QUEST DIAGNOSTICS NICHOLS		3			3
LAKE CITY VETERANS HOSPITAL			3	100%	3
JOE DIMAGGIO CHILDREN'S HOSPITAL		1	2	67%	3
SUNCOAST COMMUNITY HEALTH CENTERS PEDIATRICS			3	100%	3
NICHOLS INSTITUTE QUEST DIAGNOSTICS		2	1	33%	3
NORTH BROWARD HOSPITAL DISTRICT HEALTHCARE FOR THE HOMELESS			3	100%	3
PRATTVILLE BAPTIST HOSPITAL		3			3
PINELLAS COUNTY HEALTH DEPARTMENT		2	1	33%	3
CBS LABORATORY			3	100%	3
HUNTINGTON HOSPITAL LABORATORY		2	1	33%	3
KEY WEST URGENT CARE, INC		3			3
OPTUM LABS LLC			3	100%	3
ST LUKES HOSPITAL LABORATORY		2	1	33%	3
ACH			3	100%	3
FAMILY HEALTH CENTERS OF SWF LABS			3	100%	3
PRECISION LABS LLC		1	2	67%	3
DOH JACKSONVILLE CENTRAL LABORATORY		3			3
FRANCES WARDE MEDICAL LABORATORY		1	2	67%	3
LAKE WALES MEDICAL CENTER INC			3	100%	3
DEPARTMENT OF VETERANS AFFAIRS MEDICAL CENTER			3	100%	3
JACKSON SOUTH COMMUNITY HOSPITAL LAB			3	100%	3
VIRGINIA DIVISION OF CONSOLIDATED LABORATORIES			3	100%	3
BAYONET POINT MEDICAL CENTER			3	100%	3
UNKNOWN LAB			3	100%	3
LABCORP DIAGNOSTICS-MIAMI		2	1	33%	3
CLEVELAND CLINIC MARTIN NORTH HOSPITAL			3	100%	3

Coronavirus: testing by laboratory

Data through Jun 30, 2020 verified as of Jul 1, 2020 at 09:25 AM

Data in this report are provisional and subject to change.

The numbers in the table below represent the number for whom test results were received by the Department of Health. A person can be tested by more than one laboratory and can have both positive and negative results. **Therefore, the sum of the numbers in each column will be larger than the total number of people tested.**

Reporting lab	Inconclusive	Negative	Positive	Percent positive	Total
AVELLINO LAB USA INC		3			3
ILLINOIS DEPARTMENT OF PUBLIC HEALTH			3	100%	3
BAYCARE OUTREACH LABORATORY HOSPITAL			3	100%	3
GENUS DIAGNOSTICS			3	100%	3
NEW PLANT CITY FAMILY CARE			3	100%	3
LEE MEMORIAL HEALTH PARK LAB			3	100%	3
AVECINA MEDICAL SOUTHSIDE			3	100%	3
LAB CORP OF AMERICA		1	2	67%	3
MILLENNIUM PHYSICIAN GROUP LCC			2	100%	2
QUEENS HOSPITAL CENTER		2			2
LABCORP - OHIO			2	100%	2
SCDHEC BUREAU OF LABORATORIES			2	100%	2
NEW HAMPSHIRE DEPARTMENT OF HEALTH AND HUMAN SERVICES		1	1	50%	2
QUEST DIAGNOSTICS INCORPORATED			2	100%	2
BAYFRONT HEALTH SPRING HILL			2	100%	2
MOLECULAR TESTING LABS			2	100%	2
MONTEFIORE ST LUKE'S CORNWALL HOSPITAL		2			2
GEORGIA DEPARTMENT OF PUBLIC HEALTH			2	100%	2
INTERCOASTAL MEDICAL GROUP			2	100%	2
SHELBY BAPTIST MEDICAL CENTER			2	100%	2
MONTEFIORE NEW ROCHELLE HOSPITAL		2			2
CONEMAUGH MEMORIAL MEDICAL CENTER		2			2
ST ELIZABETH MEDICAL CENTER LABORATORY		2			2
IOWA DEPARTMENT OF PUBLIC HEALTH			2	100%	2
OHIO STATE UNIVERSITY WEXNER MEDICAL CENTER			2	100%	2
BROOKWOOD BAPTIST MEDICAL CENTER		2			2
BAY CARE			2	100%	2
ST. MARYS MEDICAL CENTER			2	100%	2
STATEN ISLAND UNIVERSITY HOSPITAL		2			2
NEW YORK STATE ELR - BRONX LEBANON HOSPITAL-MEDICAL CENTER		2			2
LABCORP RARITAN		2			2
HOME ACCESS HEALTH			2	100%	2
QUEST DIAGNOSTICS-N ST PETERSBURG-5TH			2	100%	2
MEMORIAL SLOAN KETTERING CANCER CENTER		1	1	50%	2
DOH-TAMPA BRANCH LABORATORY (MLK BLVD)			2	100%	2
NEW HAMPSHIRE PUBLIC HEALTH LABORATORIES		2			2
OKLAHOMA STATE DEPARTMENT OF HEALTH-PUBLIC HEALTH LABORATORY			2	100%	2
ALABAMA DEPARTMENT OF PUBLIC HEALTH			2	100%	2
SSM HEALTH ST LOUIS MICROBIOLOGY LABORATORY		1	1	50%	2
NEW YORK STATE DEPARTMENT OF HEALTH		1	1	50%	2
ST. JOSEPH REGIONAL MEDICAL CENTER			2	100%	2
NEW YORK STATE ELR - SARATOGA HOSPITAL LABORATORY		2			2
GULF COAST MOLECULAR LABORATORIES			2	100%	2
TREASURE COAST COMMUNITY HEALTH			2	100%	2
HEALTHMARK REGIONAL HOSPITAL LAB			2	100%	2
ADVENT HEALTH CENTRA CARE: WATERFORD LAKES			2	100%	2
FCHC (OB)-DARWIN SQUARE CTR.			2	100%	2

Coronavirus: testing by laboratory

Data through Jun 30, 2020 verified as of Jul 1, 2020 at 09:25 AM

Data in this report are provisional and subject to change.

The numbers in the table below represent the number for whom test results were received by the Department of Health. A person can be tested by more than one laboratory and can have both positive and negative results. **Therefore, the sum of the numbers in each column will be larger than the total number of people tested.**

Reporting lab	Inconclusive	Negative	Positive	Percent positive	Total
ADVANCED MEDICAL CARE			2	100%	2
FLORIDA CLINICAL LAB			2	100%	2
GULF COAST MEDICAL GROUP			2	100%	2
FLORIDA CLINICAL LABORATORY INC			2	100%	2
BAPTIST MEDICAL CENTER EAST		1	1	50%	2
LABCORP - STUART		1	1	50%	2
AMERICAN FAMILY CARE- ORANGE BEACH			2	100%	2
WINTER HAVEN HOSPITAL			2	100%	2
MY CLINICAL LAB			2	100%	2
325TH MEDICAL GROUP			2	100%	2
AHSE ROP		2			2
NEW YORK STATE ELR - JACOBI MEDICAL CENTER		2			2
MHHS All Lab Subsection		2			2
ROCKLEDGE			2	100%	2
Cleveland Clinic Weston			2	100%	2
ACHS		2			2
LINCOLN MEDICAL AND MENTAL HEALTH CENTER		2			2
IRL MARKET LAB ALACHUA		1	1	50%	2
MAGNOLIA DIAGNOSTIC			2	100%	2
ST CATHERINE OF SIENA HOSPITAL		2			2
BAYFRONT HEALTH PUNTA GORDA			2	100%	2
METHODIST MEDICAL CENTER		1	1	50%	2
UNIVERSITY HOSPITAL			2	100%	2
OMNI			2	100%	2
LABCORP PHOENIX			2	100%	2
NORTHERN DUTCHESS HOSPITAL LABORATORY		2			2
CLINICAL PATHOLOGY LABS		1	1	50%	2
THE VILLAGES CLINICAL LAB		2			2
NEW YORK STATE ELR - ORANGE REGIONAL MEDICAL CENTER LABORATORY		2			2
VIRTUA MEMORIAL HOSPITAL BURLINGTON COUNTY			2	100%	2
NAPHCARE, INC.			2	100%	2
WALGREENS #5317		2			2
PREMIER LABORATORY SERVICES, LLC			2	100%	2
PALM BEACH PATHOLOGY		2			2
NORTH OKALOOSA MEDICAL CENTER			2	100%	2
ALTRU DIAGNOSTICS INC			2	100%	2
MONTANA PUBLIC HEALTH LAB			2	100%	2
GALEN BAYLOR EXTENSION		2			2
COLORADO DEPARTMENT OF HEALTH LABORATORY SERVICES DIVISION			1	100%	1
KETTERING MEDICAL CENTER			1	100%	1
JEFFERSON COUNTY HEALTH DEPARTMENT-MONTICELLO		1			1
PHYSICIANS STAT			1	100%	1
ABBOTT			1	100%	1
COMPUNET CLINICAL LAB			1	100%	1
PEACHEALTH LABORATORIES		1			1
BAYFRONT HEALTH BROOKSVILLE			1	100%	1
INTERMARKET FACILITY			1	100%	1

Coronavirus: testing by laboratory

Data through Jun 30, 2020 verified as of Jul 1, 2020 at 09:25 AM

Data in this report are provisional and subject to change.

The numbers in the table below represent the number for whom test results were received by the Department of Health. A person can be tested by more than one laboratory and can have both positive and negative results. **Therefore, the sum of the numbers in each column will be larger than the total number of people tested.**

Reporting lab	Inconclusive	Negative	Positive	Percent positive	Total
UW HOSPITAL AND CLINICS			1	100%	1
THE CHILDREN'S HOSPITAL OF PHILADELPHIA		1			1
FALMOUTH BY THE SEA			1	100%	1
WOLFSON (USE BAPTIST)			1	100%	1
CQUENTIA NGS, LLC			1	100%	1
DOCS URGENT CARE			1	100%	1
LABCORP - HOLLYWOOD			1	100%	1
ERIE COUNTY MEDICAL CTR CLINICAL LABS		1			1
JOHN HOPKINS MEDICAL LABORATORIES		1			1
STATEN ISLAND UNIVERSITY HOSPITAL SEGUINE AVE		1			1
INTERLAB		1			1
NORTH FLORIDA/SOUTH GEORGA VETERANS HEALTH SYSTEM			1	100%	1
NORTH CAROLINA DEPARTMENT OF HEALTH & HUMAN SERVICES			1	100%	1
CORAL GABLES HOSPITAL			1	100%	1
BMC/JACSONVILLE		1			1
CLEVELAND CLINIC OHIO LABORATORIES			1	100%	1
NEW YORK STATE ELR - WESTCHESTER MEDICAL CENTER		1			1
DUKE HEALTH REGIONAL HOSPITAL			1	100%	1
Viracor Eurofins			1	100%	1
WILMINGTON VA MEDICAL CENTER			1	100%	1
HANCOCK REGIONAL HOSPITAL		1			1
WUESTHOFF MEDICAL CENTER-MELBOURNE			1	100%	1
PIEDMONT HOSPITAL LAB			1	100%	1
PPD			1	100%	1
FORT SANDERS REGIONAL LABORATORY		1			1
ONslow MEMORIAL HOSPITAL LABORATORY		1			1
FLORIDA HOSPITAL ALTAMONTE			1	100%	1
SANFORD REGIONAL HOSPITAL WORTHINGTON		1			1
DEACONESS HOSPITAL			1	100%	1
BARDMOOR LABORATORY			1	100%	1
HOLY NAME MEDICAL CENTER		1			1
NEW YORK STATE ELR - BELLEVUE HOSPITAL CENTER DEPARTMENT		1			1
NEW YORK STATE ELR - AUBURN COMMUNITY HOSPITAL		1			1
LAKEVIEW REGIONAL HOSPITAL			1	100%	1
LABCORP KANSAS CITY			1	100%	1
HOUSTON HEALTH DEPARTMENT - BUREAU OF LABORATORY SERVICES			1	100%	1
NONE			1	100%	1
LABCORP - ORLANDO		1			1
SENTARA NORFOLK GENERAL HOSPITAL CENTRAL LAB			1	100%	1
VA GREATER LOS ANGELES HEALTH CARE SYSTEM			1	100%	1
BAYFRONT HEALTH PORT CHARLOTTE			1	100%	1
ALVERNO CLINICAL LABORATORIES			1	100%	1
VA HOSPITAL			1	100%	1
ARNOT OGDEN MEDICAL CENTER LABORATORY		1			1
WEST VIRGINIA UNIVERSITY HOSPITALS			1	100%	1
ARNOLD PALMER HOSPITAL LABORATORY			1	100%	1
UAB			1	100%	1

Coronavirus: testing by laboratory

Data through Jun 30, 2020 verified as of Jul 1, 2020 at 09:25 AM

Data in this report are provisional and subject to change.

The numbers in the table below represent the number for whom test results were received by the Department of Health. A person can be tested by more than one laboratory and can have both positive and negative results. **Therefore, the sum of the numbers in each column will be larger than the total number of people tested.**

Reporting lab	Inconclusive	Negative	Positive	Percent positive	Total
TAMIAMI LAB MILLENIUM			1	100%	1
CFCH - FROSTPROOF			1	100%	1
SPECIALITY LABORATORIES,INC		1			1
TAMPA		1			1
TIMPANOGOS REGIONAL HOSPITAL			1	100%	1
ALLIANCE LABS @LRMC			1	100%	1
CALIFORNIA PUBLIC HEALTH LABORATORY			1	100%	1
JOHNSON CITY MEDICAL CENTER		1			1
LABCORP HOUSTON			1	100%	1
CENTRA CARE CONWAY			1	100%	1
HAWAII DEPARTMENT OF HEALTH LAB			1	100%	1
ST VINCENT'S CHILTON		1			1
DYNAMIC MEDICAL USA			1	100%	1
ECLRS			1	100%	1
LEESBURG FAMILY MEDICINE		1			1
Mt Sinai Aventura			1	100%	1
NEW YORK STATE ELR - ERIE COUNTY MEDICAL CTR CLINICAL LABS		1			1
NEW YORK STATE ELR - LABORATORY ALLIANCE OF CENTRAL NEW		1			1
COASTAL LABORATORIES			1	100%	1
RIVERSIDE METHODIST HOSPITAL LAB			1	100%	1
LOYOLA UNIVERSITY MEDICAL CENTER LABORATORY			1	100%	1
MONTANA DEPARTMENT OF PUBLIC HEALTH & HUMAN SERVICES			1	100%	1
TUFTS MEDICAL CENTER			1	100%	1
MONTEFIORE NYACK HOSPITAL AFFILIATED LABORATORY		1			1
ACCESSLAB		1			1
ANNE BATES LEACH EYE HOSPITAL/ ABLEH MICROBIOLOGY LABORATORY		1			1
MEDSTAR HARBOR HOSPITAL			1	100%	1
MANATEE PEDIATRICS			1	100%	1
MEDICAL CLINIC OF HOUSTON			1	100%	1
NAVAL HOSPITAL OF JACKSONVILLE			1	100%	1
BAY CARE LAB SERVICES/ST. ANTHONY'S HOSPITAL			1	100%	1
CAROMONT HEALTH			1	100%	1
DICKERT			1	100%	1
DOH			1	100%	1
CALHOUN LIBERTY HOSPITAL			1	100%	1
BAYCARE MEDICAL GROUP INC			1	100%	1
BOZEMAN HEALTH DEACONESS HOSPITAL		1			1
WILLIAM A HINTON STATE LABORATORY INSTITUTE			1	100%	1
LABCORP LAFAYETTE		1			1
TALLAHASSEE MEMORIAL HOSPITAL/MICROBIOLOGY LAB			1	100%	1
AZALEA HEALTH			1	100%	1
NORTHSHORE UNIVERSITY HEALTHSYSTEM EVANSTON HOSPITAL LAB			1	100%	1
OHIO DEPARTMENT OF HEALTH LABORATORY		1			1
PHAROS HEALTH			1	100%	1
SOUTH GEORGIA MEDICAL CENTER			1	100%	1
PEDIATRIC HEALTHCARE ALLIANCE			1	100%	1
PERDIDO URGENT CARE			1	100%	1

Coronavirus: testing by laboratory

Data through Jun 30, 2020 verified as of Jul 1, 2020 at 09:25 AM

Data in this report are provisional and subject to change.

The numbers in the table below represent the number for whom test results were received by the Department of Health. A person can be tested by more than one laboratory and can have both positive and negative results. **Therefore, the sum of the numbers in each column will be larger than the total number of people tested.**

Reporting lab	Inconclusive	Negative	Positive	Percent positive	Total
NORTH RIVER FAMILY HEALTH CENTER			1	100%	1
MEDICAL CENTER ENTERPRISE			1	100%	1
UNIVERSITY HOSPITAL OF BROOKLYN		1			1
MARION COUNTY HEALTH DEPARTMENT			1	100%	1
UNIVERSITY OF MISSOURI HEALTH CARE			1	100%	1
TRINITAS REGIONAL MEDICAL CENTER			1	100%	1
TANNER MEDICAL CENTER EAST AL		1			1
UNITED HEALTHCARE			1	100%	1
BAPTIST ER TOWN CTR			1	100%	1
PRISMA HEALTH TUOMEY LABORATORY			1	100%	1
ST. MARY MEDICAL CENTER		1			1
NEW YORK STATE ELR - NEW YORK PRESBYTERIAN-LOWER MANHATTAN		1			1
SOUTHWEST REGIONAL PCR LABORATORY			1	100%	1
AMMON LABS			1	100%	1
KANSAS DEPARTMENT OF HEALTH			1	100%	1
MOLECULAR DIAGNOSTICS			1	100%	1
NEW YORK STATE ELR - MONTEFIORE MEDICAL CENTER LABORATORIES - WEILER			1	100%	1
NEW YORK STATE ELR - LONG ISLAND JEWISH VALLEY STREAM		1			1
PECONIC BAY MEDICAL CENTER LABORATORY			1	100%	1
QUEST - HOUSTON LAB			1	100%	1
SHANDS AT LAKE SHORE LAB			1	100%	1
HEART OF FLORIDA HMA			1	100%	1
HIGHLANDS CLINICAL LABORATORY			1	100%	1
REDITUS LABORATORIES			1	100%	1
QUEST ELR		1			1
SCIENCE CARE			1	100%	1
RIVERVIEW REGIONAL MEDICAL CENTER		1			1
VIRACOR			1	100%	1
CAROLINAS HEALTHCARE SYSTEM LAB			1	100%	1
CATHOLIC HEALTH SYSTEM DEPT LABORATORY		1			1
BIRMINGHAM VAMC		1			1
BLOOD SYSTEMS LABORATORIES			1	100%	1
SUNY AT STONY BROOK			1	100%	1
FLORIDA DEPARTMENT OF HEALTH PALM BEACH COUNTY			1	100%	1
COLLIER COUNTY HEALTH DEPT.			1	100%	1
DELAWARE DIAGNOSTICS LABS			1	100%	1
US LABORATORIES			1	100%	1
WOODHULL MEDICAL AND MENTAL HEALTH CTR		1			1
WEST PACIFIC MEDICAL LABORATORY			1	100%	1
ACCESS HEALTH CARE PHYSICIANS			1	100%	1
AFC URGENT CARE			1	100%	1
WASHINGTON STATE DEPARTMENT OF HEALTH PUBLIC HEALTH LABORATORIES			1	100%	1
BAYCARE OUTREACH LAB			1	100%	1
CBC LAB			1	100%	1
WELLINGTON WEST 100176			1	100%	1
ST. LUKE'S HOSPITAL - BETHLEHEM CAMPUS		1			1
JOHNS HOPKINS MEDICAL LABS			1	100%	1

Coronavirus: testing by laboratory

Data through Jun 30, 2020 verified as of Jul 1, 2020 at 09:25 AM

Data in this report are provisional and subject to change.

The numbers in the table below represent the number for whom test results were received by the Department of Health. A person can be tested by more than one laboratory and can have both positive and negative results. **Therefore, the sum of the numbers in each column will be larger than the total number of people tested.**

Reporting lab	Inconclusive	Negative	Positive	Percent positive	Total
WELLNOW URGENT CARE		1			1
NEW YORK STATE ELR - NEW YORK CITY DEPARTMENT OF HEALTH & MENTAL		1			1
FLORIDA HEALTH CARE PLANS			1	100%	1
LAKEWOOD RANCH ER 24/7			1	100%	1
BIOFIRE			1	100%	1
FLORIDA HOSPITAL KISSIMMEE			1	100%	1
WATAUGA MEDICAL CENTER			1	100%	1
OHIO DEPARTMENT OF HEALTH			1	100%	1
GARCIA CLINICAL LABORATORY		1			1
EDGAR PRICE FAMILY & CHILDREN HEALTHCARE CENTER			1	100%	1
DOCTOR'S MEMORIAL HOSPITAL			1	100%	1
FULGENT GENETICS			1	100%	1
GUTHRIE MEDICAL GROUP LABORATORIES		1			1
PARKWAY REGIONAL MEDICAL CENTER LAB			1	100%	1
GENESIS LABORATORY MANAGEMENT			1	100%	1
GIFFORD MEMORIAL HOSPITAL		1			1
MHS LAB		1			1
UNK			1	100%	1
RIVIERA BEACH HEALTH CENTER LAB			1	100%	1
UNIVERSITY OF MIAMI			1	100%	1
HEALTH NETWORK LABORATORIES		1			1
PALM BEACH CHD - LAB			1	100%	1
NORTHSIDE HOSPITAL DULUTH			1	100%	1
CHATSWORTH ASSISTED LIVING COMMUNITY AT PGA NATIONAL			1	100%	1
URGENT CARE TCMA			1	100%	1
UNIVERSITY OF FLORIDA			1	100%	1
ST. JOSEPH'S HOSPITAL NORTH			1	100%	1
TEN HEALTHCARE			1	100%	1
SKY RIDGE MEDICAL CENTER - MICRO			1	100%	1
SANTA ROSA MEDICAL CENTER			1	100%	1
SAMARITAN MEDICAL CENTER		1			1
ROBERT WOOD JOHNSON HOSPITAL			1	100%	1
THOMAS LANGLEY			1	100%	1
UF KANAPAHA LAB BEAKER		1			1
NORTHWEST FL COMM HOSP			1	100%	1
MARINER'S HOSPITAL			1	100%	1
SMITH KLINE			1	100%	1
MISSOURI DEPARTMENT OF HEALTH AND SENIOR SERVICES - STATE PH LAB		1			1
MARYLAND DEPARTMENT OF HEALTH AND MENTAL HYGIENE			1	100%	1
SPRING HILL REGIONAL HOSPITAL			1	100%	1
LEGACY LABORATORY SERVICES			1	100%	1
SONIC REFERENCE LABORATORY			1	100%	1
EXCEL URGENT CARE OF NJ			1	100%	1
NEW YORK PRESBYTERIAN - ALLEN HOSPITAL		1			1
ONEIDA HEALTHCARE CENTER		1			1
GEISINGER MEDICAL CENTER		1			1
NOVANT HEALTH INPATIENT CARE			1	100%	1

Coronavirus: testing by laboratory

Data through Jun 30, 2020 verified as of Jul 1, 2020 at 09:25 AM

Data in this report are provisional and subject to change.

The numbers in the table below represent the number for whom test results were received by the Department of Health. A person can be tested by more than one laboratory and can have both positive and negative results. **Therefore, the sum of the numbers in each column will be larger than the total number of people tested.**

Reporting lab	Inconclusive	Negative	Positive	Percent positive	Total
OHIO STATE UNIVERSITY MEDICAL CENTER			1	100%	1
MUNSON MEDICAL CENTER			1	100%	1
NEW YORK STATE ELR - SAMARITAN HOSPITAL LABORATORY		1			1
NEWYORK-PRESBYTERIAN/ LAWRENCE HOSPITAL LABORATORY		1			1
DALLAS MEDICAL CENTER			1	100%	1
BIODORON LABORATORIES			1	100%	1
LABCORP-PORT ST.LUCIE		1			1
COMMONWEALTH OF MASSACHUSETTS			1	100%	1
GENETRAIT LABORATORIES			1	100%	1
NAVAL BRANCH MEDICAL CLINIC			1	100%	1
BEAUMONT HOSPITAL, GROSSE POINTE			1	100%	1
BEAUFORT MEMORIAL			1	100%	1
CLARITY LAB SOLUTIONS			1	100%	1
CHARLOTTE CHD PORT CHARLOTTE		1			1
GRAND VIEW HOSPITAL			1	100%	1
LAB CORP PHOENIX			1	100%	1
INTERMOUNTAIN MEDICAL CENTER			1	100%	1
Lourdes Hospital			1	100%	1
WARD MEMORIAL HOSPITAL		1			1
HEALTH FIRST IBM-UX			1	100%	1
MILLENNIUM PATHOLOGY/MICROBIOLOGY LABORATORY			1	100%	1
INDIAN RIVER CLINICAL LABORATORY, INC.		1			1
LEEESBURG REGIONAL MEDICAL CENTER		1			1
MAGNOLIA ADULT, LLC			1	100%	1
THE HEART HOSPITAL BAYLOR PLANO			1	100%	1
REMISE OCCUPATIONAL HEALTH SOLUTIONS INC			1	100%	1
QUEST DIAGNOSTICS-OCALA-SE 3RD		1			1
TIEHH BIOTERRORISM RESPONSE LAB			1	100%	1
ST FRANCIS			1	100%	1
SOUTHEAST GEORGIA HEALTH SYSTEM			1	100%	1
TEXAS DEPARTMENT OF STATE HEALTH SERVICES			1	100%	1
State Lab Unspecifd			1	100%	1
UNITED CLINICAL LABORATORIES			1	100%	1
PEDIATRIC ASSOCIATES - JACKSONVILLE			1	100%	1
PHELPS HOSPITAL LABORATORY		1			1
NORTH BROWARD MEDICAL CENTER			1	100%	1
KETTERING HEALTH			1	100%	1
QUEST DIAGNOSTIC INC TECHNICAL			1	100%	1
URGENT CARE WEST CLINIC			1	100%	1
JRS LABORATORY			1	100%	1
PREMIER MEDICAL LABORATORY			1	100%	1
Total	4434	2,172,217	203,480	9%	2,380,131