

COVID-19: summary of persons being monitored, persons tested, and cases

Data through Jul 21, 2020 verified as of Jul 22, 2020 at 09:25 AM

Data in this report are provisional and subject to change.

Monitored persons: people the Florida Department of Health was notified of for possible monitoring because they are a contact of a case, traveled from China, or were identified by the Centers for Disease Control and Prevention (CDC) as a part of an airline/ship contact investigation

Total reports	117,878
Total persons of high, medium, or unknown risk	114,193
High/medium/unknown risk still being monitored	13,779

Persons tested: includes PCR and antigen test results received by the Department of Health from the state public health laboratory (BPHL), as well as commercial and hospital laboratories

Total tested	3,158,741
Positive	379,619
Negative	2,775,092
Inconclusive	4,030
Awaiting testing	2,524

Cases: people with positive PCR or antigen test result

Total cases	379,619
Florida residents	374,920
Non-Florida residents	4,699

Type of testing	
Florida residents	374,920
Positive by BPHL/CDC	12,713
Positive by commercial/hospital lab	362,207
Non-Florida residents	
Positive by BPHL/CDC	181
Positive by commercial/hospital lab	4,518

Characteristics	
Florida residents hospitalized	22,243
Florida resident deaths	5,345
Change in deaths since previous report	+139
Non-Florida resident deaths	114

Hospitalized counts include anyone who was hospitalized at some point during their illness. It does not reflect the number of people currently hospitalized.

More information on deaths identified through death certificate data is available on the National Center for Health Statistics website at www.cdc.gov/nchs/nvss/vsrr/COVID19/index.htm.

Risk factors for Florida residents	
Traveled	3,217
Contact with a known case	97,397
Traveled and contact with a known case	3,167
Neither	271,139
No travel and no contact	36,617
Travel is unknown	195,591
Contact is unknown	60,943
Contact is pending	168,628

Travel can be unknown and contact can be unknown or pending for the same case, these numbers will sum to more than the "neither" total.

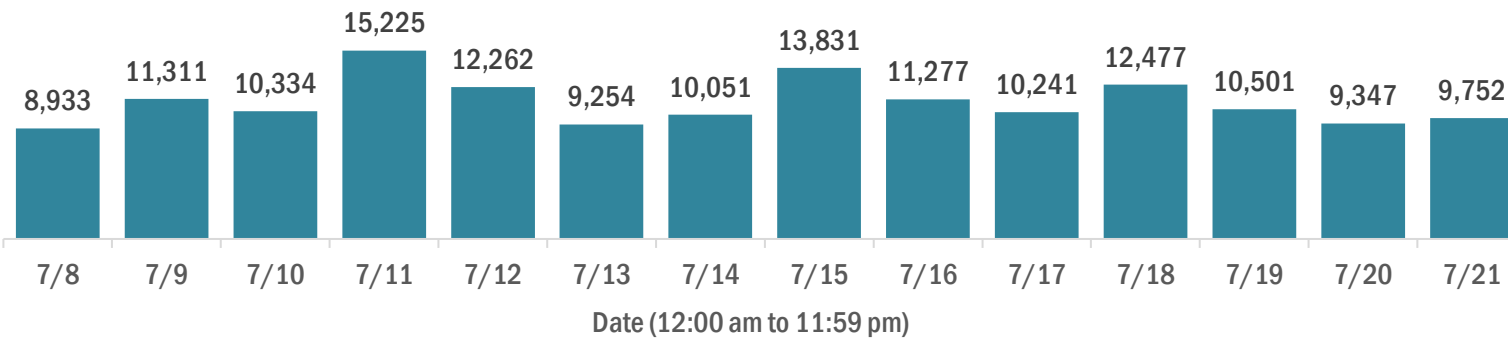
COVID-19: cases and laboratory testing over time

Data through Jul 21, 2020 verified as of Jul 22, 2020 at 09:25 AM

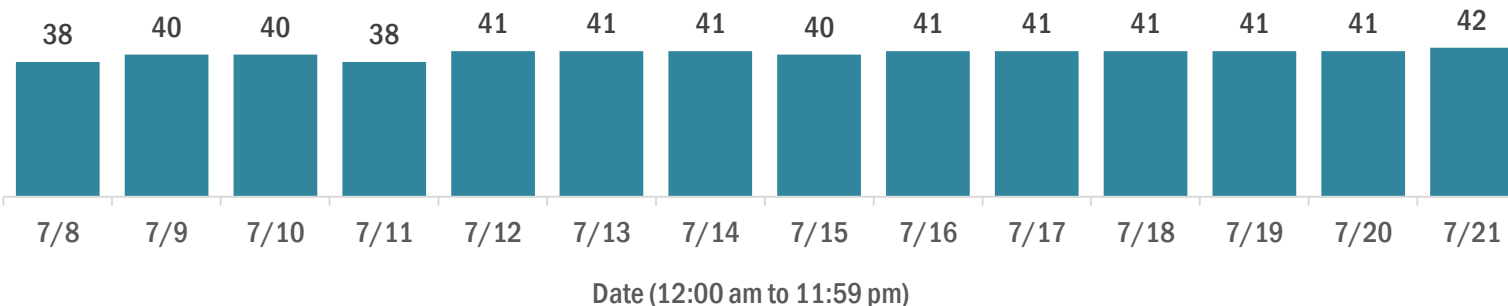
Data in this report are provisional and subject to change.

Cases in Florida residents per day for the past 2 weeks

Number of cases per day



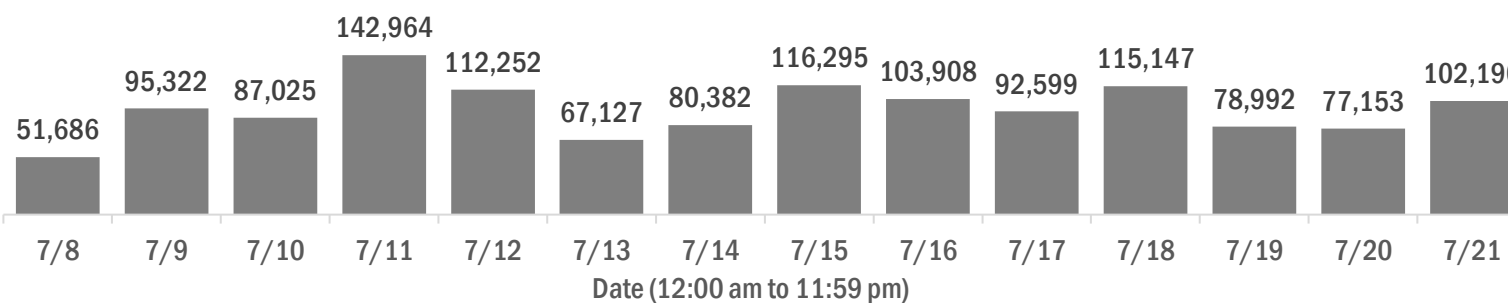
Median age of cases by day



Laboratory testing for Florida residents and non-Florida residents over the past 2 weeks

Number of people tested per day

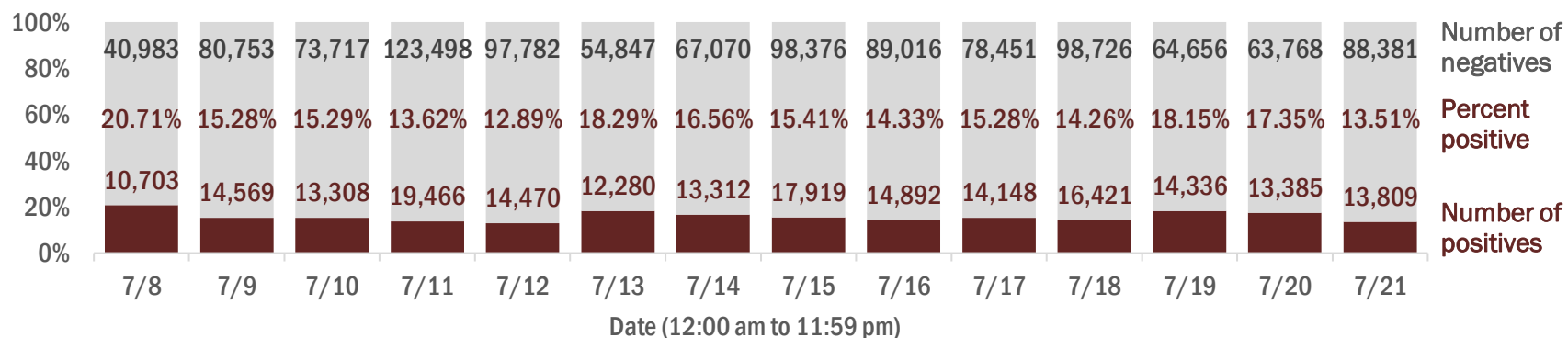
These counts include the number of people for whom the department received PCR or antigen laboratory results by day. People tested on multiple days will be included for each day a new result was received. A person is only counted once for each day they are tested, regardless of whether multiple specimens are tested or multiple results are received.



Number and percent of positive labs

The percent of positive results ranged from 12.89% to 20.71% over the past 2 weeks and was 13.51% yesterday.

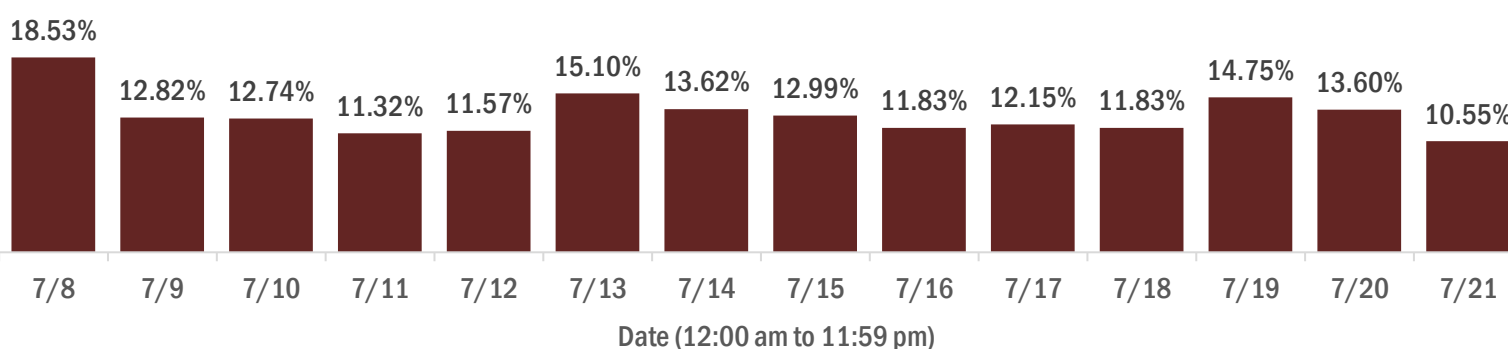
These counts include the number of people for whom the department received PCR or antigen laboratory results by day. People tested on multiple days will be included for each day a new result was received. A person is only counted once for each day they are tested, regardless of whether multiple specimens are tested or multiple results are received. If a person has a positive specimen and a negative specimen in the same day, only the positive result is counted.



Percent positivity for new cases

The percent of positive results ranged from 10.55% to 18.53% over the past 2 weeks and was 10.55% yesterday.

This percent is the number of people who test PCR- or antigen-positive for the first time divided by all the people tested that day, excluding people who have previously tested positive.



COVID-19: characteristics of 374,920 Florida resident cases

Data through Jul 21, 2020 verified as of Jul 22, 2020 at 09:25 AM

Data in this report are provisional and subject to change.

Age group	Cases	Hospitalizations	Deaths
0-4 years	6,149 2%	114 1%	0 0%
5-14 years	13,645 4%	88 0%	3 0%
15-24 years	58,969 16%	542 2%	13 0%
25-34 years	75,245 20%	1,377 6%	35 1%
35-44 years	61,557 16%	2,042 9%	119 2%
45-54 years	58,987 16%	2,941 13%	225 4%
55-64 years	47,236 13%	3,956 18%	526 10%
65-74 years	27,441 7%	4,261 19%	1,071 20%
75-84 years	15,758 4%	3,938 18%	1,514 28%
85+ years	9,263 2%	2,984 13%	1,839 34%
Unknown	670 0%	0 0%	0 0%
Total	374,920	22,243	5,345

Gender	Cases
Female	191,619 51%
Male	180,615 48%
Unknown	2,686 1%
Total	374,920

Ethnicity	Cases	Hospitalizations	Deaths
Hispanic	93,126 25%	7,211 32%	1,358 25%
Non-Hispanic	120,581 32%	13,632 61%	3,502 66%
Unknown	161,213 43%	1,400 6%	485 9%
Total	374,920	22,243	5,345

Race and ethnicity	Cases	Hospitalizations	Deaths
White	140,661 38%	13,286 60%	3,599 67%
Hispanic	62,434 17%	5,218 23%	1,084 20%
Non-Hispanic	64,075 17%	7,557 34%	2,320 43%
Unknown	14,152 4%	511 2%	195 4%
Black	55,345 15%	5,638 25%	1,098 21%
Hispanic	2,511 1%	270 1%	37 1%
Non-Hispanic	45,094 12%	5,212 23%	1,015 19%
Unknown	7,740 2%	156 1%	46 1%
Other race	33,158 9%	2,503 11%	389 7%
Hispanic	17,605 5%	1,564 7%	204 4%
Non-Hispanic	8,744 2%	799 4%	144 3%
Unknown	6,809 2%	140 1%	41 1%
Unknown race	145,756 39%	816 4%	259 5%
Hispanic	10,576 3%	159 1%	33 1%
Non-Hispanic	2,668 1%	64 0%	23 0%
Unknown	132,512 35%	593 3%	203 4%
Total	374,920	22,243	5,345

Hospitalization counts include anyone who was hospitalized at some point during their illness. It does not reflect the number of people currently hospitalized. **Other race** includes any person with a race of American Indian/Alaskan native, Asian, native Hawaiian/Pacific Islander, or other.

COVID-19: deaths in Florida residents and staff of long-term care facilities

Data through Jul 21, 2020 verified as of Jul 22, 2020 at 09:25 AM

Data in this report are provisional and subject to change.

For current cases in residents or staff of long-term care facilities, please visit: <https://floridahealthcovid19.gov/>

County	Deaths		County	Deaths		County	Deaths	
Dade	585	23%	Indian River	14	1%	Citrus	1	0%
Palm Beach	294	12%	Orange	13	1%	Desoto	1	0%
Pinellas	239	10%	Jackson	12	0%	Hardee	1	0%
Broward	183	7%	Marion	12	0%	Holmes	1	0%
Lee	148	6%	Washington	12	0%	Levy	1	0%
Hillsborough	136	5%	Alachua	11	0%	Monroe	1	0%
Polk	113	5%	Osceola	11	0%	Nassau	1	0%
Manatee	91	4%	Walton	10	0%	Okeechobee	1	0%
Sarasota	69	3%	Lake	8	0%	St. Johns	1	0%
Volusia	54	2%	Gadsden	7	0%	Taylor	1	0%
Charlotte	52	2%	Hernando	7	0%	Total	2,495	
Duval	51	2%	Calhoun	6	0%			
Collier	49	2%	Leon	5	0%			
St. Lucie	47	2%	Okaloosa	5	0%			
Escambia	44	2%	Jefferson	4	0%			
Seminole	32	1%	Putnam	4	0%			
Martin	29	1%	Baker	3	0%			
Clay	27	1%	Madison	3	0%			
Pasco	25	1%	Bradford	2	0%			
Brevard	22	1%	Columbia	2	0%			
Suwannee	22	1%	Santa Rosa	2	0%			
Hendry	18	1%	Sumter	2	0%			

Note: cases are summarized by the county of usual residence. Residents and staff may be cases associated with facilities that are not in their county of usual residence, resulting in cases being included below for counties that do not have facilities with known cases.

COVID-19: characteristics of 379,619 cases

Data through Jul 21, 2020 verified as of Jul 22, 2020 at 09:25 AM

Data in this report are provisional and subject to change.

Tables below include cases in Florida residents and non-Florida residents.

All 67 Florida counties have cases:

County	FL resident		Non-FL resident	Total
Dade	91,543	24%	802	92,345
Broward	43,287	12%	460	43,747
Palm Beach	27,255	7%	251	27,506
Hillsborough	24,774	7%	117	24,891
Orange	24,355	6%	345	24,700
Duval	17,784	5%	195	17,979
Pinellas	14,084	4%	107	14,191
Lee	13,115	3%	280	13,395
Polk	10,269	3%	40	10,309
Collier	8,149	2%	100	8,249
Manatee	7,003	2%	75	7,078
Osceola	6,612	2%	75	6,687
Escambia	5,569	1%	733	6,302
Volusia	5,610	1%	47	5,657
Seminole	5,610	1%	23	5,633
Pasco	5,234	1%	26	5,260
Sarasota	4,518	1%	49	4,567
Brevard	4,543	1%	18	4,561
St. Lucie	3,875	1%	21	3,896
Lake	3,569	1%	25	3,594
Leon	3,255	1%	64	3,319
Martin	3,227	1%	23	3,250
Marion	2,818	1%	8	2,826
Alachua	2,758	1%	51	2,809
St. Johns	2,644	1%	26	2,670
Bay	2,213	1%	56	2,269
Clay	2,241	1%	8	2,249
Okaloosa	2,079	1%	25	2,104
Santa Rosa	2,075	1%	15	2,090
Indian River	1,717	0%	12	1,729
Charlotte	1,530	0%	6	1,536
Columbia	1,516	0%	7	1,523
Hendry	1,427	0%		1,427
Hernando	1,261	0%	12	1,273
Desoto	1,111	0%	1	1,112

County	FL resident		Non-FL resident	Total
Putnam	1,050	0%		1,050
Monroe	952	0%	26	978
Gadsden	950	0%	7	957
Suwannee	917	0%	17	934
Jackson	903	0%	13	916
Citrus	908	0%	3	911
Walton	815	0%	83	898
Sumter	874	0%	7	881
Highlands	873	0%	3	876
Nassau	799	0%	39	838
Hardee	720	0%	6	726
Flagler	687	0%	9	696
Okeechobee	691	0%	3	694
Hamilton	519	0%	4	523
Madison	484	0%	8	492
Unknown	87	0%	333	420
Levy	411	0%	3	414
Washington	362	0%	5	367
Wakulla	338	0%	3	341
Holmes	322	0%	9	331
Liberty	320	0%		320
Glades	289	0%		289
Gilchrist	277	0%		277
Baker	250	0%		250
Calhoun	230	0%		230
Taylor	224	0%	2	226
Bradford	205	0%		205
Gulf	198	0%	7	205
Dixie	203	0%		203
Union	161	0%		161
Jefferson	118	0%	4	122
Franklin	79	0%	2	81
Lafayette	74	0%		74
Total	374,920		4,699	379,619

COVID-19: characteristics of 374,920 Florida resident cases

Data through Jul 21, 2020 verified as of Jul 22, 2020 at 09:25 AM

Data in this report are provisional and subject to change.

The table below includes the cities and counties of residence for cases in Florida residents based on the patient's ZIP Code.

Note that city is not always received as part of the initial notification and may be missing while the case is being investigated.

City and county	Cases
Miami, Dade	57,030
Orlando, Orange	18,569
Jacksonville, Duval	16,556
Tampa, Hillsborough	15,177
Hialeah, Dade	12,929
Fort Lauderdale, Broward	9,995
Hollywood, Broward	8,529
West Palm Beach, Palm Beach	6,755
Homestead, Dade	6,390
Saint Petersburg, Pinellas	6,071
Naples, Collier	5,686
Fort Myers, Lee	5,560
Kissimmee, Osceola	5,390
Pompano Beach, Broward	5,191
Pensacola, Escambia	4,891
Bradenton, Manatee	4,799
Lake Worth, Palm Beach	3,807
Boca Raton, Palm Beach	3,492
Sarasota, Sarasota	3,434
Tallahassee, Leon	3,187
Lakeland, Polk	3,130
Cape Coral, Lee	2,951
Clearwater, Pinellas	2,705
Miramar, Broward	2,696
Miami Beach, Dade	2,696
Lehigh Acres, Lee	2,585
Miami Gardens, Dade	2,407
Boynton Beach, Palm Beach	2,399
Port Saint Lucie, St. Lucie	2,332
Gainesville, Alachua	2,267
Winter Haven, Polk	2,135
Ocala, Marion	2,082
Immokalee, Collier	1,952
Delray Beach, Palm Beach	1,827
Opa Locka, Dade	1,819
Coral Springs, Broward	1,812
Brandon, Hillsborough	1,736
Stuart, Martin	1,604
Panama City, Bay	1,530
Riverview, Hillsborough	1,497
Largo, Pinellas	1,462
Davie, Broward	1,458
Lake City, Columbia	1,457
Missing, Broward	1,425
Plant City, Hillsborough	1,419
Sunrise, Broward	1,419
Apopka, Orange	1,419
Fort Pierce, St. Lucie	1,409
North Miami Beach, Dade	1,391
Doral, Dade	1,358
Melbourne, Brevard	1,354
Jupiter, Palm Beach	1,344
Saint Augustine, St. Johns	1,342
Sanford, Seminole	1,315
Deerfield Beach, Broward	1,276
Lake Worth Beach, Palm Beach	1,252
New Port Richey, Pasco	1,232
Daytona Beach, Volusia	1,188
Vero Beach, Indian River	1,144

COVID-19: characteristics of 374,920 Florida resident cases

Data through Jul 21, 2020 verified as of Jul 22, 2020 at 09:25 AM

Data in this report are provisional and subject to change.

The table below includes the cities and counties of residence for cases in Florida residents based on the patient's ZIP Code.

Note that city is not always received as part of the initial notification and may be missing while the case is being investigated.

City and county	Cases
Plantation, Broward	1,122
Tamarac, Broward	1,106
Deltona, Volusia	1,095
Palmetto, Manatee	1,053
Orange Park, Clay	1,043
Saint Cloud, Osceola	1,026
Royal Palm Beach, Palm Beach	982
Arcadia, Desoto	982
Winter Park, Orange	975
Winter Garden, Orange	933
Palm Bay, Brevard	928
Clermont, Lake	925
Altamonte Springs, Seminole	917
Deland, Volusia	916
Margate, Broward	913
Palm Beach Gardens, Palm Beach	904
Bonita Springs, Lee	893
Milton, Santa Rosa	879
Oviedo, Seminole	874
Hallandale, Broward	869
North Miami, Dade	858
Indiantown, Martin	856
North Lauderdale, Broward	855
Ocoee, Orange	840
Davenport, Polk	830
Land O Lakes, Pasco	805
Haines City, Polk	794
Coconut Creek, Broward	792
Port Charlotte, Charlotte	791
Live Oak, Suwannee	777
Palm Harbor, Pinellas	772
Coral Gables, Dade	765
Florida City, Dade	743
Weston, Broward	740
Fort Walton Beach, Okaloosa	736
Wesley Chapel, Pasco	734
Clewiston, Hendry	730
Spring Hill, Hernando	714
Wellington, Palm Beach	709
Oakland Park, Broward	708
Pinellas Park, Pinellas	707
Belle Glade, Palm Beach	701
Longwood, Seminole	698
Ruskin, Hillsborough	697
Seminole, Pinellas	682
Okeechobee, Okeechobee	672
Lutz, Hillsborough	661
Valrico, Hillsborough	640
Windermere, Orange	623
Quincy, Gadsden	588
Casselberry, Seminole	586
Pembroke Pines, Broward	580
Jacksonville Beach, Duval	579
Wimauma, Hillsborough	565
Punta Gorda, Charlotte	563
Bartow, Polk	532
Palatka, Putnam	524
Lake Mary, Seminole	523
Missing, Palm Beach	519

COVID-19: characteristics of 374,920 Florida resident cases

Data through Jul 21, 2020 verified as of Jul 22, 2020 at 09:25 AM

Data in this report are provisional and subject to change.

The table below includes the cities and counties of residence for cases in Florida residents based on the patient's ZIP Code.

Note that city is not always received as part of the initial notification and may be missing while the case is being investigated.

City and county	Cases
Aventura, Dade	514
Leesburg, Lake	508
Palm Coast, Flagler	501
Cocoa, Brevard	500
Labelle, Hendry	495
Ormond Beach, Volusia	494
Tavares, Lake	486
Miami Lakes, Dade	480
Middleburg, Clay	461
Winter Springs, Seminole	447
Kissimmee, Polk	445
North Fort Myers, Lee	445
Cantonment, Escambia	441
North Port, Sarasota	436
Zephyrhills, Pasco	435
Port Richey, Pasco	431
Hudson, Pasco	429
Maitland, Orange	429
Loxahatchee, Palm Beach	421
Crestview, Okaloosa	413
Brooksville, Hernando	413
Key West, Monroe	412
Missing, Dade	412
Gulf Breeze, Santa Rosa	412
Auburndale, Polk	408
Tarpon Springs, Pinellas	396
Seffner, Hillsborough	393
Dade City, Pasco	391
Ponte Vedra Beach, St. Johns	389
Sebring, Highlands	379
Lake Wales, Polk	366
Mulberry, Polk	364
Jasper, Hamilton	363
Port Orange, Volusia	362
Marianna, Jackson	362
Riviera Beach, Palm Beach	361
South Miami, Dade	358
Sarasota, Manatee	355
Venice, Sarasota	353
Fernandina Beach, Nassau	351
Dunedin, Pinellas	351
Pahokee, Palm Beach	349
Missing, Collier	347
Orange City, Volusia	346
Wauchula, Hardee	343
Cooper City, Broward	341
Saint Johns, St. Johns	340
Holiday, Pasco	337
Navarre, Santa Rosa	333
Merritt Island, Brevard	324
Destin, Okaloosa	321
Green Cove Springs, Clay	320
South Bay, Palm Beach	318
Dania, Broward	315
Palm City, Martin	312
Eustis, Lake	311
Fellsmere, Indian River	311
Fleming Island, Clay	308
Panama City Beach, Bay	307

COVID-19: characteristics of 374,920 Florida resident cases

Data through Jul 21, 2020 verified as of Jul 22, 2020 at 09:25 AM

Data in this report are provisional and subject to change.

The table below includes the cities and counties of residence for cases in Florida residents based on the patient's ZIP Code.

Note that city is not always received as part of the initial notification and may be missing while the case is being investigated.

City and county	Cases
Parrish, Manatee	305
Dover, Hillsborough	303
Madison, Madison	301
Titusville, Brevard	300
Pinecrest, Dade	300
The Villages, Sumter	299
Odessa, Hillsborough	298
Lantana, Palm Beach	297
Missing, Hillsborough	297
Defuniak Springs, Walton	295
Rockledge, Brevard	295
Crawfordville, Wakulla	295
Estero, Lee	293
Avon Park, Highlands	290
Gibsonton, Hillsborough	288
Bristol, Liberty	283
Santa Rosa Beach, Walton	279
Polk City, Polk	273
Bonifay, Holmes	268
Moore Haven, Glades	268
New Smyrna Beach, Volusia	264
Atlantic Beach, Duval	261
Inverness, Citrus	255
Groveland, Lake	254
Chipley, Washington	254
Lauderdale Lakes, Broward	250
Crescent City, Putnam	243
Key Biscayne, Dade	243
Lauderhill, Broward	242
Parkland, Broward	238
Oldsmar, Pinellas	236
Mount Dora, Lake	235
Lynn Haven, Bay	229
Debary, Volusia	229
Missing, Duval	228
Niceville, Okaloosa	220
Missing, Orange	216
Hobe Sound, Martin	215
North Palm Beach, Palm Beach	211
Wilton Manors, Broward	211
Apollo Beach, Hillsborough	207
Frostproof, Polk	205
Lithia, Hillsborough	202
Missing, Pasco	198
Sneads, Jackson	196
Sun City Center, Hillsborough	193
Fort Meade, Polk	193
Ellenton, Manatee	192
Ponte Vedra, St. Johns	192
Pace, Santa Rosa	192
Perry, Taylor	190
Bushnell, Sumter	189
Palm Springs, Palm Beach	188
Safety Harbor, Pinellas	180
Yulee, Nassau	179
Missing, Santa Rosa	178
Alachua, Alachua	176
Trenton, Gilchrist	176
Sebastian, Indian River	174

COVID-19: characteristics of 374,920 Florida resident cases

Data through Jul 21, 2020 verified as of Jul 22, 2020 at 09:25 AM

Data in this report are provisional and subject to change.

The table below includes the cities and counties of residence for cases in Florida residents based on the patient's ZIP Code.

Note that city is not always received as part of the initial notification and may be missing while the case is being investigated.

City and county	Cases
Missing, Hendry	168
Missing, St. Johns	168
Missing, Polk	164
Summerfield, Marion	162
Key Largo, Monroe	154
Macclenny, Baker	152
Missing, Hardee	151
Chiefland, Levy	146
Palmetto Bay, Dade	145
Missing, Lee	144
Belleview, Marion	142
Starke, Bradford	142
Jensen Beach, Martin	142
Crystal River, Citrus	140
Bowling Green, Hardee	137
Wildwood, Sumter	136
Missing, Marion	133
Jacksonville, St. Johns	132
Mascotte, Lake	132
Blountstown, Calhoun	130
Missing, Citrus	129
Missing, Volusia	125
Missing, St. Lucie	125
Neptune Beach, Duval	120
Mary Esther, Okaloosa	120
Williston, Levy	119
Edgewater, Volusia	119
Lake Placid, Highlands	119
Cocoa Beach, Brevard	119
Homosassa, Citrus	117
Newberry, Alachua	117
Thonotosassa, Hillsborough	116
Old Town, Dixie	116
Lady Lake, Lake	114
Myakka City, Manatee	114
Lake Alfred, Polk	113
Satellite Beach, Brevard	112
Missing, Madison	111
Shalimar, Okaloosa	111
Missing, Desoto	110
Clearwater Beach, Pinellas	110
Jennings, Hamilton	109
Missing, Osceola	108
Callahan, Nassau	108
Missing, Brevard	107
Port Saint Joe, Gulf	106
Dunnellon, Marion	105
Nokomis, Sarasota	103
Minneola, Lake	103
Pierson, Volusia	102
Marathon, Monroe	102
Carol City, Dade	102
Havana, Gadsden	101
Holly Hill, Volusia	100
Lake Butler, Union	97
Southwest Ranches, Broward	97
Spring Hill, Pasco	95
Englewood, Charlotte	93
Freeport, Walton	92

COVID-19: characteristics of 374,920 Florida resident cases

Data through Jul 21, 2020 verified as of Jul 22, 2020 at 09:25 AM

Data in this report are provisional and subject to change.

The table below includes the cities and counties of residence for cases in Florida residents based on the patient's ZIP Code.

Note that city is not always received as part of the initial notification and may be missing while the case is being investigated.

City and county	Cases
Sorrento, Lake	91
Missing, Martin	91
West Melbourne, Brevard	90
Tavernier, Monroe	89
Monticello, Jefferson	89
Medley, Dade	88
De Leon Springs, Volusia	86
Hilliard, Nassau	86
Missing, Jackson	84
Chattahoochee, Gadsden	83
Lake Park, Palm Beach	82
Gulfport, Pinellas	81
Marco Island, Collier	81
Missing, Hernando	81
Missing, Indian River	80
Indialantic, Brevard	78
Zolfo Springs, Hardee	77
Bunnell, Flagler	77
Missing, Highlands	75
Missing, Sarasota	74
Bell, Gilchrist	74
Jay, Santa Rosa	73
Cross City, Dixie	72
Midway, Gadsden	72
Alva, Lee	72
Tequesta, Palm Beach	72
Montverde, Lake	71
Cape Canaveral, Brevard	69
Missing, Monroe	69
Missing, Seminole	69
Englewood, Sarasota	68
Miramar Beach, Walton	68
Missing, Pinellas	68
Molino, Escambia	68
Graceville, Jackson	68
Palm Beach, Palm Beach	67
Mayo, Lafayette	67
Gotha, Orange	67
Bronson, Levy	66
Avon Park, Polk	66
Chuluota, Seminole	64
Beverly Hills, Citrus	64
Umatilla, Lake	63
Flagler Beach, Flagler	62
Wewahitchka, Gulf	62
Geneva, Seminole	61
Trinity, Pasco	60
East Palatka, Putnam	59
Fort Myers Beach, Lee	58
Eagle Lake, Polk	57
South Daytona, Volusia	57
Kenneth City, Pinellas	57
Missing, Nassau	56
Missing, Escambia	55
Lecanto, Citrus	55
Ave Maria, Collier	55
Rotunda West, Charlotte	54
Fort White, Columbia	54
Missing, Manatee	54

COVID-19: characteristics of 374,920 Florida resident cases

Data through Jul 21, 2020 verified as of Jul 22, 2020 at 09:25 AM

Data in this report are provisional and subject to change.

The table below includes the cities and counties of residence for cases in Florida residents based on the patient's ZIP Code.

Note that city is not always received as part of the initial notification and may be missing while the case is being investigated.

City and county	Cases
Greenwood, Jackson	54
Oxford, Sumter	53
Keystone Heights, Clay	52
High Springs, Alachua	52
Dunnellon, Citrus	52
Altha, Calhoun	52
Archer, Alachua	51
Gretna, Gadsden	51
Missing, Clay	51
West Miami, Dade	50
Hernando, Citrus	48
Fruitland Park, Lake	48
Century, Escambia	47
Hastings, St. Johns	47
Missing, Lake	47
Mims, Brevard	47
Oakland, Orange	47
Vernon, Washington	46
Belle Isle, Orange	46
Interlachen, Putnam	46
Weeki Wachee, Hernando	46
Melbourne Beach, Brevard	45
Islamorada, Monroe	45
South Pasadena, Pinellas	45
Missing, Okaloosa	45
White Springs, Hamilton	44
Cottdale, Jackson	44
Missing, Flagler	44
Glen Saint Mary, Baker	43
Lake Panasoffkee, Sumter	43
Pomona Park, Putnam	42
Coconut Grove, Dade	42
Baker, Okaloosa	42
Seville, Volusia	42
Zellwood, Orange	42
Indian Rocks Beach, Pinellas	42
Surfside, Dade	41
O Brien, Suwannee	41
Southport, Bay	40
Satsuma, Putnam	40
Youngstown, Bay	40
Citra, Marion	39
Missing, Levy	39
Missing, Washington	39
Apalachicola, Franklin	38
Biscayne Park, Dade	38
Viera, Brevard	37
Bal Harbour, Dade	37
Webster, Sumter	37
Raiford, Union	37
Dundee, Polk	37
Branford, Suwannee	36
Missing, Gadsden	36
Hawthorne, Alachua	36
Greenacres, Palm Beach	36
Greenville, Madison	36
Osprey, Sarasota	36
Lakewood Ranch, Manatee	35
El Portal, Dade	35

COVID-19: characteristics of 374,920 Florida resident cases

Data through Jul 21, 2020 verified as of Jul 22, 2020 at 09:25 AM

Data in this report are provisional and subject to change.

The table below includes the cities and counties of residence for cases in Florida residents based on the patient's ZIP Code.

Note that city is not always received as part of the initial notification and may be missing while the case is being investigated.

City and county	Cases
Missing, Leon	35
Grand Island, Lake	35
Silver Springs, Marion	34
Lawtey, Bradford	34
San Antonio, Pasco	34
Indian Harbour Beach, Brevard	34
Grand Ridge, Jackson	33
Reddick, Marion	33
Sanibel, Lee	33
Missing, Calhoun	32
Celebration, Osceola	32
Christmas, Orange	31
Missing, Walton	31
Mcdavid, Escambia	31
Missing, Unknown	31
Missing, Gulf	30
Cutler Bay, Dade	30
Sanderson, Baker	30
Lake Hamilton, Polk	30
Poinciana, Polk	30
Coleman, Sumter	29
Ocklawaha, Marion	29
Center Hill, Sumter	29
Lee, Madison	29
Melrose, Putnam	28
Florida State University, Leon	27
Howey-In-The-Hills, Lake	27
Lauderdale By The Sea, Broward	25
Malabar, Brevard	25
Missing, Gilchrist	25
Missing, Sumter	25
Stock Island, Monroe	25
Mcalpin, Suwannee	25
Astor, Lake	24
Lake Helen, Volusia	24
Elkton, St. Johns	24
Inlet Beach, Walton	24
Princeton, Dade	24
Missing, Baker	24
Citrus Springs, Citrus	24
Hallandale Beach, Broward	24
Patrick Air Force Base, Brevard	23
Missing, Wakulla	23
Madeira Beach, Pinellas	23
Canal Point, Palm Beach	23
Big Pine Key, Monroe	23
Missing, Holmes	23
Juno Beach, Palm Beach	22
Fern Park, Seminole	22
Hypoluxo, Palm Beach	22
Babson Park, Polk	22
Fountain, Bay	22
Felda, Hendry	22
Florida Dept Of Corrections, Union	22
Steinhatchee, Taylor	22
Osteen, Volusia	21
Atlantis, Palm Beach	21
Alford, Jackson	21
Malone, Jackson	21

COVID-19: characteristics of 374,920 Florida resident cases

Data through Jul 21, 2020 verified as of Jul 22, 2020 at 09:25 AM

Data in this report are provisional and subject to change.

The table below includes the cities and counties of residence for cases in Florida residents based on the patient's ZIP Code.

Note that city is not always received as part of the initial notification and may be missing while the case is being investigated.

City and county	Cases
Micanopy, Alachua	21
Bokeelia, Lee	21
The Villages, Lake	20
Weirsdale, Marion	20
Ochopee, Collier	20
Lady Lake, Sumter	20
Greensboro, Gadsden	19
Morriston, Levy	19
Astatula, Lake	19
Naranja, Dade	19
Laurel Hill, Okaloosa	19
Hosford, Liberty	19
Valparaiso, Okaloosa	19
Floral City, Citrus	19
Sunny Isles Beach, Dade	19
Wellborn, Suwannee	18
Missing, Okeechobee	18
Westville, Holmes	18
Saint James City, Lee	18
Missing, Bay	18
Bryceville, Nassau	18
Kissimmee, Orange	18
Miami Springs, Dade	18
Missing, Liberty	17
Hialeah Gardens, Dade	17
Eastpoint, Franklin	17
Belleair Beach, Pinellas	17
Eglin Air Force Base, Okaloosa	17
Belleair, Pinellas	17
Temple Terrace, Hillsborough	16
Bradenton Beach, Manatee	16
Longboat Key, Manatee	16
Missing, Jefferson	16
Welaka, Putnam	15
Carrabelle, Franklin	15
Anthony, Marion	15
North Bay Village, Dade	15
Sweetwater, Dade	15
Kendall, Dade	15
Oak Hill, Volusia	15
Unknown, Orange	15
Grant-Valkaria, Brevard	15
Summerland Key, Monroe	15
Odessa, Pasco	15
Haverhill, Palm Beach	14
Yalaha, Lake	14
Missing, Suwannee	14
Holt, Okaloosa	14
Crystal Beach, Pinellas	14
Sumterville, Sumter	14
San Mateo, Putnam	14
Golden Beach, Dade	14
Alafaya, Orange	13
Waverly, Polk	13
Missing, Charlotte	13
Carrollwood, Hillsborough	13
Baldwin, Duval	13
Altoona, Lake	13
Kindred, Osceola	13

COVID-19: characteristics of 374,920 Florida resident cases

Data through Jul 21, 2020 verified as of Jul 22, 2020 at 09:25 AM

Data in this report are provisional and subject to change.

The table below includes the cities and counties of residence for cases in Florida residents based on the patient's ZIP Code.

Note that city is not always received as part of the initial notification and may be missing while the case is being investigated.

City and county	Cases
Fort Denaud, Hendry	12
Ona, Hardee	12
Paisley, Lake	12
Missing, Bradford	12
Miami Shores, Dade	12
Lamont, Jefferson	12
Caryville, Washington	12
Barefoot Bay, Brevard	11
Lighthouse Point, Broward	11
Sopchoppy, Wakulla	11
Edgewood, Orange	11
Okahumpka, Lake	11
Singer Island, Palm Beach	11
Village Of Palmetto Bay, Dade	11
Bascom, Jackson	11
Goulds, Dade	11
Hollister, Putnam	11
Destin, Walton	11
Holmes Beach, Manatee	11
Callaway, Bay	10
Placida, Charlotte	10
Nocatee, Desoto	10
Missing, Dixie	10
Waldo, Alachua	10
West Park, Broward	10
Heathrow, Seminole	10
Florahome, Putnam	10
Tice, Lee	10
Ponce Inlet, Volusia	10
Tierra Verde, Pinellas	9
North Redington Beach, Pinellas	9
Bellview, Escambia	9
Missing, Franklin	9
Mangonia Park, Palm Beach	9
Ponce De Leon, Holmes	9
Lake Suzy, Desoto	9
Terra Ceia, Manatee	9
Santa Fe, Alachua	8
Georgetown, Putnam	8
Eaton Park, Polk	8
Balm, Hillsborough	8
Campbellton, Jackson	8
Sun City, Hillsborough	8
Harmony, Osceola	8
Walnut Hill, Escambia	8
Bayonet Point, Pasco	8
Inglis, Levy	8
Bay Harbor Islands, Dade	8
Dania Beach, Broward	8
Fruit Cove, St. Johns	8
Matlacha, Lee	8
Unknown, Dade	8
Intercession City, Osceola	8
Clarksville, Calhoun	8
Palm Shores, Brevard	8
Missing, Glades	8
Brooker, Bradford	7
Kinard, Calhoun	7
Reunion, Osceola	7

COVID-19: characteristics of 374,920 Florida resident cases

Data through Jul 21, 2020 verified as of Jul 22, 2020 at 09:25 AM

Data in this report are provisional and subject to change.

The table below includes the cities and counties of residence for cases in Florida residents based on the patient's ZIP Code.

Note that city is not always received as part of the initial notification and may be missing while the case is being investigated.

City and county	Cases
Winter Park, Seminole	7
Hampton, Bradford	7
Labelle, Glades	7
Sydney, Hillsborough	7
Sebastian, Brevard	7
Tyndall Air Force Base, Bay	7
Pinetta, Madison	7
Eloise, Polk	7
Treasure Island, Pinellas	7
Ocean Ridge, Palm Beach	7
Highland City, Polk	7
Tioga, Alachua	6
Venus, Highlands	6
Missing, Alachua	6
Enterprise, Volusia	6
Wabasso, Indian River	6
Lutz, Pasco	6
Kathleen, Polk	6
Palma Sola, Manatee	6
Palmdale, Glades	6
Fort Mccoy, Marion	6
La Crosse, Alachua	5
Missing, Union	5
Mango, Hillsborough	5
Miami, Unknown	5
Pensacola Beach, Santa Rosa	5
Long Boat Key, Manatee	5
Missing, Taylor	5
Bay Pines, Pinellas	5
Crystal Springs, Pasco	5
Ponce De Leon, Walton	5
Saint Pete Beach, Pinellas	5
Poinciana, Osceola	5
Hiwassee, Orange	5
Key Colony Beach, Monroe	5
Wahneta, Polk	5
West Delray Beach, Palm Beach	5
Hollywood, Unknown	5
Kenansville, Osceola	5
Missing, Lafayette	5
Buena Ventura Lakes, Osceola	5
Cedar Key, Levy	5
Dowling Park, Suwannee	4
Missing, Putnam	4
Perdido Key, Escambia	4
Nichols, Polk	4
Perrine, Dade	4
Nobleton, Hernando	4
Northdale, Hillsborough	4
Lorida, Highlands	4
Altamonte Springs, Orange	4
Indian Lake Estates, Polk	4
Maxville, Duval	4
Ybor City, Hillsborough	4
Tallevast, Manatee	4
Orange Lake, Marion	4
Lehigh, Lee	4
Gonzalez, Escambia	4
Panacea, Wakulla	4

COVID-19: characteristics of 374,920 Florida resident cases

Data through Jul 21, 2020 verified as of Jul 22, 2020 at 09:25 AM

Data in this report are provisional and subject to change.

The table below includes the cities and counties of residence for cases in Florida residents based on the patient's ZIP Code.

Note that city is not always received as part of the initial notification and may be missing while the case is being investigated.

City and county	Cases
Maitland, Seminole	4
Homeland, Polk	4
Bonifay, Washington	4
Cloud Lake, Palm Beach	4
Paxton, Walton	4
Penney Farms, Clay	4
Plymouth, Orange	4
Ridge Manor, Pasco	4
Siesta Key, Sarasota	4
Mayport, Duval	4
Pembroke Park, Broward	4
Jacksonville, Unknown	4
Bradley, Polk	4
Buckingham, Lee	3
Candler, Marion	3
Boca Grande, Lee	3
Graceville, Holmes	3
Fisher Island, Dade	3
Pine Hills, Orange	3
North Venice, Sarasota	3
Shady Grove, Taylor	3
Orlando, Seminole	3
Unknown, Broward	3
Saint Lucie West, St. Lucie	3
Micco, Brevard	3
Lynbrook, Broward	3
Lowell, Marion	3
Lake Monroe, Seminole	3
Belleair Bluffs, Pinellas	3
Captiva, Lee	3
Bagdad, Santa Rosa	3
Fort Lauderdale, Unknown	3
Ferndale, Lake	3
Davenport, Osceola	3
Green Acres, Palm Beach	3
Dinsmore, Duval	3
Ebro, Washington	3
Loughman, Polk	3
Long Key, Monroe	3
Cudjoe Key, Monroe	3
Cutler Ridge, Dade	3
Duette, Manatee	3
East Lake, Marion	3
Azalea Park, Orange	3
Anna Maria, Manatee	3
Mexico Beach, Bay	3
Missing, Hamilton	3
Trilby, Pasco	3
Homosassa Springs, Citrus	3
Eatonville, Orange	3
Pompano Beach, Unknown	3
Steinhatchee, Dixie	3
Saint Marks, Wakulla	3
Lacoochee, Pasco	3
Hernando Beach, Hernando	3
Gulf Hammock, Levy	3
Centerville, Leon	3
Celebration, Orange	3
Leisure City, Dade	3

COVID-19: characteristics of 374,920 Florida resident cases

Data through Jul 21, 2020 verified as of Jul 22, 2020 at 09:25 AM

Data in this report are provisional and subject to change.

The table below includes the cities and counties of residence for cases in Florida residents based on the patient's ZIP Code.

Note that city is not always received as part of the initial notification and may be missing while the case is being investigated.

City and county	Cases
Port Saint John, Brevard	3
Pasadena, Pinellas	3
Saint Leo, Pasco	3
Mount Plymouth, Lake	3
Oneco, Manatee	3
Westchase, Hillsborough	3
Miromar Lakes, Lee	3
Mayport Naval Housing, Duval	3
Gulf Stream, Palm Beach	3
City Of Sunrise, Broward	3
Braden River, Manatee	3
Fpo, Duval	3
Elfers, Pasco	3
Everglades National Park, Dade	2
Virginia Gardens, Dade	2
South Palm Beach, Palm Beach	2
Union Park, Orange	2
Samoset, Manatee	2
Mulberry, Hillsborough	2
New Smyrna, Volusia	2
Sand Lake, Orange	2
West Palm Beach, Unknown	2
Lake Butler, Bradford	2
Miami, Martin	2
At Large, Broward	2
Goodland, Collier	2
Durant, Hillsborough	2
Ft Pierce, St. Lucie	2
Gulf Breeze, Escambia	2
Lamont, Taylor	2
Lulu, Columbia	2
Venice, Manatee	2
Unknown, Seminole	2
Sugarloaf, Monroe	2
San Carlos Park, Lee	2
Sorrento, Orange	2
Rubonia, Manatee	2
Ormond Beach, Flagler	2
Longboat Key, Sarasota	2
Earleton, Alachua	2
Aloma, Orange	2
Branford, Lafayette	2
Clewiston, Palm Beach	2
Margate, Unknown	2
Bayshore Gardens, Manatee	2
Fort Charlotte, Charlotte	2
Lealman, Pinellas	2
Horseshoe Beach, Dixie	2
Hialeah, Unknown	2
Lake Harbor, Palm Beach	2
Lake City, Suwannee	2
Forest City, Orange	2
Goldenrod, Seminole	2
Alturas, Polk	2
Chokoloskee, Collier	2
Orlando, Brevard	2
Woodville, Leon	2
Yankeetown, Levy	2
Hawthorne, Putnam	2

COVID-19: characteristics of 374,920 Florida resident cases

Data through Jul 21, 2020 verified as of Jul 22, 2020 at 09:25 AM

Data in this report are provisional and subject to change.

The table below includes the cities and counties of residence for cases in Florida residents based on the patient's ZIP Code.

Note that city is not always received as part of the initial notification and may be missing while the case is being investigated.

City and county	Cases
Archer, Levy	2
Lake Como, Putnam	2
Jensen Beach, St. Lucie	2
Loxahatchee Groves, Palm Beach	2
Lockhart, Orange	2
Orlando, Unknown	2
River Ranch, Polk	2
Quail Heights, Dade	2
Ramrod Key, Monroe	2
Ponte Vedra, Duval	2
Valkaria, Brevard	2
Trenton, Levy	2
University Park, Manatee	2
West Villages, Sarasota	2
Sunny Hills, Washington	2
Tangerine, Orange	2
Oklawaha, Marion	2
Parker, Bay	2
Milton, Escambia	2
Manalapan, Palm Beach	2
Hallandale Beach, Broward	2
Inlet Beach, Bay	2
Laurel, Sarasota	2
Lake Wales, Escambia	1
Jacksonville, Clay	1
Hollywood, Dade	1
Kissimmee, Brevard	1
Grandin, Putnam	1
Fort Pierce, Martin	1
Florence Villa, Polk	1
Fl, Dade	1
Fellsmeele, Brevard	1
Estero, Collier	1
Bay Lake, Orange	1
Beverly Beach, Flagler	1
Aollywoss, Dade	1
Ar nondale, Hillsborough	1
Celeste, Broward	1
Cortez, Manatee	1
Clermont, Orange	1
Clermont, Polk	1
Doctors Inlet, Clay	1
Miamf, Dade	1
Pine Ridge, Citrus	1
Olustee, Baker	1
Okeechobee, St. Lucie	1
Tewksbury, Orange	1
Unknown, Columbia	1
Unknown, Palm Beach	1
Watersound, Walton	1
Wesley Chapel, Alachua	1
Weston, Dade	1
Switzerland, St. Johns	1
Tampa Palms, Hillsborough	1
South Daytona Beach, Volusia	1
Tampa, Pinellas	1
Sewalls Point, Martin	1
San Antonio, Unknown	1
Wintergarden, Orange	1

COVID-19: characteristics of 374,920 Florida resident cases

Data through Jul 21, 2020 verified as of Jul 22, 2020 at 09:25 AM

Data in this report are provisional and subject to change.

The table below includes the cities and counties of residence for cases in Florida residents based on the patient's ZIP Code.

Note that city is not always received as part of the initial notification and may be missing while the case is being investigated.

City and county	Cases
Venice, Hillsborough	1
West Bradenton, Manatee	1
Tallahassee, Unknown	1
The Villages, Marion	1
Port Everglades, Broward	1
Saint Augusaintine Beach, St. Johns	1
Palm Beach Shores, Palm Beach	1
Seven Springs, Pasco	1
Niceville, Walton	1
Orlando, Columbia	1
Louisville, Broward	1
Laud-By-The-Sea, Broward	1
Middlesburg, Duval	1
Jupiter, Duval	1
Jacksonville, Broward	1
Immokalee, Lee	1
Indian Shores, Pinellas	1
Apopka, Seminole	1
Boca Raton, Orange	1
Hallandale Beach, Unknown	1
Davenport, Orange	1
Wimauma, Manatee	1
Wausau, Washington	1
Palm Coast, Orange	1
Saint Cloud, Orange	1
Saint Petersburg, Dade	1
San Pedro Sula, Dade	1
Scottsmoor, Brevard	1
Telogia, Liberty	1
Turmero, Dade	1
Cosselberry, Orange	1
Darien, Pasco	1
Deltona , Volusia	1
Bostwick, Putnam	1
Bartow, Unknown	1
Cassadaga, Volusia	1
Champions Gate, Polk	1
Gastonia, Polk	1
Logwood, Seminole	1
Miami Granders, Dade	1
Murdock, Charlotte	1
Oakland Park, Dade	1
Hallandate Ben, Unknown	1
Hurlburt Field, Okaloosa	1
Greenacres, Unknown	1
General Delivery, Pasco	1
Gibsonia, Polk	1
Madison, Unknown	1
Lee, Unknown	1
Live Oak, Columbia	1
Everett, Dade	1
Everglades City, Collier	1
Daytona Beach Shores, Volusia	1
Cottondale, Washington	1
Apopka, Unknown	1
Alligator Point, Wakulla	1
Bonita Springs, Collier	1
Bruce, Holmes	1
Nokomis, Palm Beach	1

COVID-19: characteristics of 374,920 Florida resident cases

Data through Jul 21, 2020 verified as of Jul 22, 2020 at 09:25 AM

Data in this report are provisional and subject to change.

The table below includes the cities and counties of residence for cases in Florida residents based on the patient's ZIP Code.

Note that city is not always received as part of the initial notification and may be missing while the case is being investigated.

City and county	Cases
Ocala, Unknown	1
Ocean Breeze, Martin	1
Orlando, Orange	1
Saint Cloud, Manatee	1
Port Salerno, Martin	1
Redington Beach, Pinellas	1
University Of Central Fl, Orange	1
Valrico, Orange	1
Wewahitchka, Calhoun	1
South Fort Myers, Lee	1
Sparr, Marion	1
Tampa, Orange	1
Town N Country, Hillsborough	1
Winterpark, Unknown	1
Cape Haze, Charlotte	1
Davie, Unknown	1
Branford, Gilchrist	1
Alva, Escambia	1
Bayou George, Bay	1
Homossa, Orange	1
Hudson, Pinellas	1
Indian Creek Village, Dade	1
Jacksonville Naval Air Station, Duval	1
Jacksonville Naval Hospital, Duval	1
Mesa, Unknown	1
Panama City, Unknown	1
Rivera Beach, Palm Beach	1
Perth Amboy, Hillsborough	1
Miami Gardens, Unknown	1
Morriston, Marion	1
Mount Dora, Seminole	1
Naples, Lee	1
North Fort Myers, Charlotte	1
North Laud, Unknown	1
Shalimar, Escambia	1
Sharpes, Brevard	1
Sanford, Orange	1
Unknown, Unknown	1
Unable To Obtain, Palm Beach	1
University Of Tampa, Hillsborough	1
Watersound, Bay	1
Yeehaw, Okeechobee	1
Unknown, Volusia	1
Port Richey, Hillsborough	1
Port Saint Lucie, Palm Beach	1
Punta Gurda, Sarasota	1
Rocky Point, Hillsborough	1
Saint Johns, Duval	1
Pensacola Beach, Escambia	1
Pine Castle, Orange	1
Orl, Osceola	1
Westville, Walton	1
Miccosukee, Leon	1
Milligan, Okaloosa	1
Miami, Lee	1
N. Lauderdale, Broward	1
Land O Lakes, Hillsborough	1
Layton, Monroe	1
Lehigh Acers, Lee	1

COVID-19: characteristics of 374,920 Florida resident cases

Data through Jul 21, 2020 verified as of Jul 22, 2020 at 09:25 AM

Data in this report are provisional and subject to change.

The table below includes the cities and counties of residence for cases in Florida residents based on the patient's ZIP Code.

Note that city is not always received as part of the initial notification and may be missing while the case is being investigated.

City and county	Cases
Lloyd, Jefferson	1
Homeless, Hillsborough	1
Homeless, Monroe	1
Hutchinson Island, St. Lucie	1
Glenwood, Volusia	1
Hallandale, Unknown	1
Deerfield Beach, Unknown	1
Cypress, Jackson	1
Clarcona, Orange	1
Coconut Ck, Unknown	1
Alpharetta, Broward	1
Baker, Escambia	1
Cape Cord, Lee	1
El Jobean, Charlotte	1
Fort Lauderdale, Dade	1
Franklin, Orange	1
Haines City, Orange	1
Austin, Dade	1
Apo, Collier	1
Astor, Volusia	1
Clearwater, Hillsborough	1
Mayport Naval Station, Duval	1
Mount Dora, Orange	1
New Church, Palm Beach	1
New Port Richey, Hillsborough	1
Lauderhill, Unknown	1
Jena, Taylor	1
Litchfield Park, Unknown	1
Laurel Hill, Walton	1
Weston, Unknown	1
Winter Springs, Orange	1
Seacrest, Bay	1
West Hollywood, Broward	1
Unknown Out Of Area, Palm Beach	1
Unknown, Duval	1
Pensacola Naval Hospital, Escambia	1
Orange Park, Duval	1
Orlando, Osceola	1
Roseland, Indian River	1
Point Washington, Walton	1
North Port, Manatee	1
Palma Ceia, Hillsborough	1
Pennsacola, Escambia	1
Oakland Park, Unknown	1
Okeechobee, Martin	1
Sarasota, Unknown	1
Seacrest, Walton	1
Salem, Taylor	1
Pooler, Broward	1
University Of Miami, Dade	1
Unknown, Manatee	1
Twentynine Palms, Broward	1
St Cloud, Orange	1
Wakulla Springs, Wakulla	1
Windermere, Unknown	1
Xifamk, Dade	1
Fanning Springs, Gilchrist	1
Fellsmere, Brevard	1
Fernandina, Nassau	1

COVID-19: characteristics of 374,920 Florida resident cases

Data through Jul 21, 2020 verified as of Jul 22, 2020 at 09:25 AM

Data in this report are provisional and subject to change.

The table below includes the cities and counties of residence for cases in Florida residents based on the patient's ZIP Code.

Note that city is not always received as part of the initial notification and may be missing while the case is being investigated.

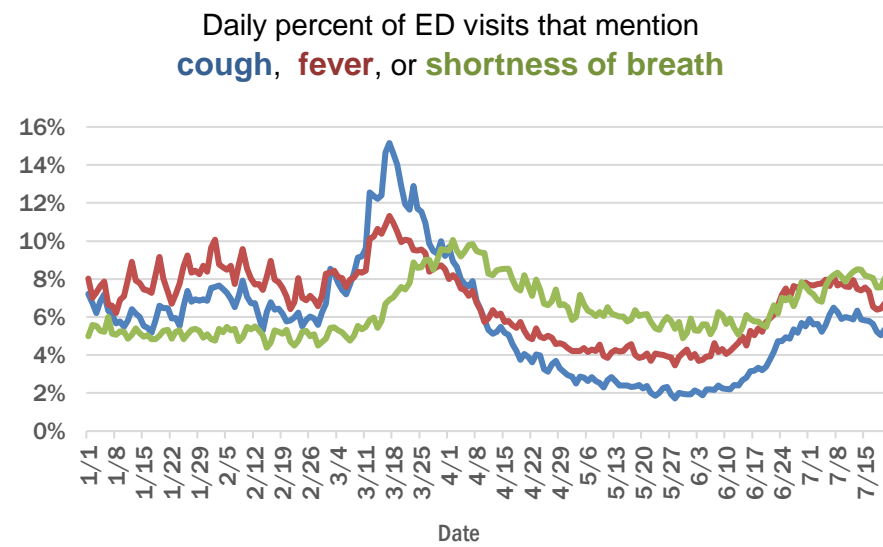
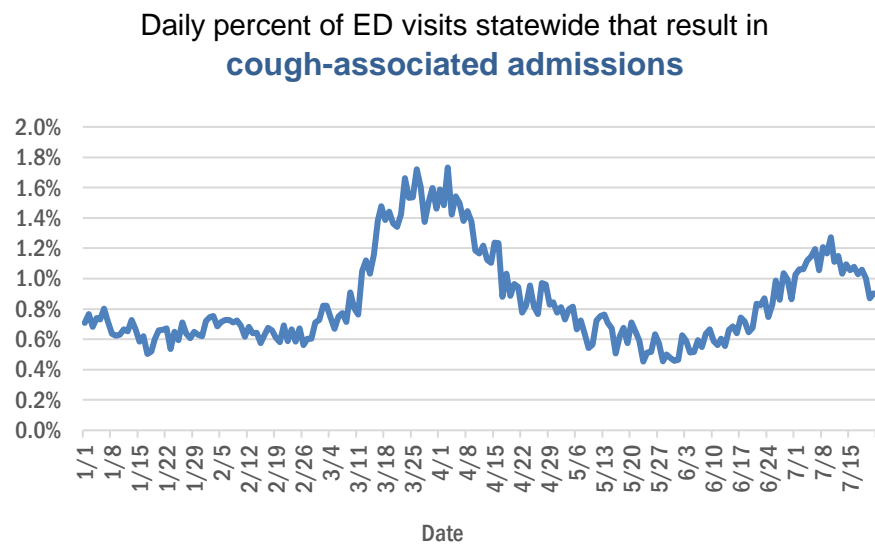
City and county	Cases
Graham, Bradford	1
Cypress Gardens, Polk	1
Hillsboro Beach, Broward	1
Holder, Citrus	1
Lauderdale Lakes, Unknown	1
Key West Naval Air Station, Monroe	1
Indian River Shores, Indian River	1
Indian Rock Beach, Pinellas	1
Metter, Manatee	1
Miami Dade, Unknown	1
Miami, Broward	1
Miamksaohes, Dade	1
Total	374,920

COVID-19: additional surveillance information

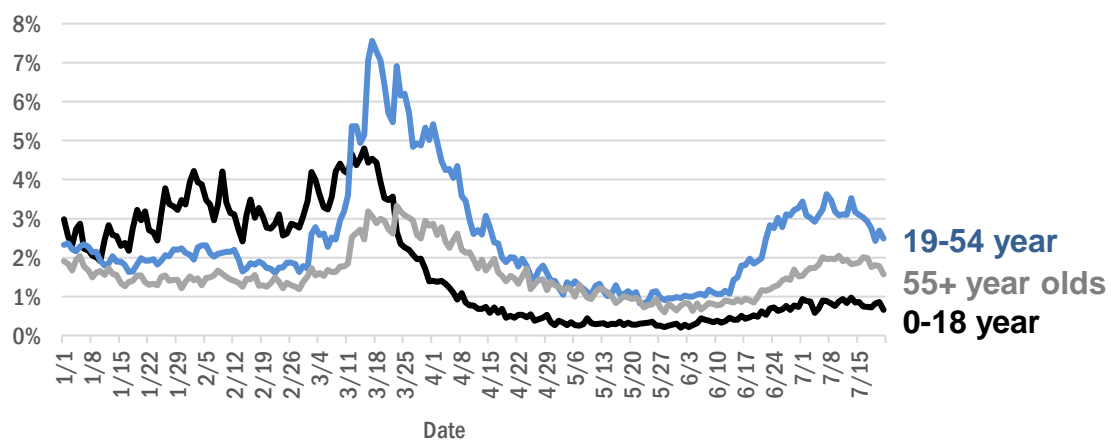
Data through Jul 21, 2020 verified as of Jul 22, 2020 at 09:25 AM

Data in this report are provisional and subject to change.

Statewide emergency department (ED) chief complaint and admission data



Daily percent of ED visits statewide that mention cough by age group



The Electronic Surveillance System for the Early Notification of Community-Based Epidemics (ESSENCE-FL) includes chief complaint data from 211 of 212 Florida EDs. Data are transmitted electronically to ESSENCE-FL daily or hourly.

COVID-19: All persons with tests reported

Data through Jul 21, 2020 verified as of Jul 22, 2020 at 09:25 AM

Data in this report are provisional and subject to change.

The table below includes persons with laboratory results that the Department of Health has received electronically or by mail/fax for Florida residents and non-Florida residents.

County	Awaiting testing	Inconclusive	Negative	Positive	Percent positive	Total tested
Dade	197	1,053	431,551	92,345	18%	524,949
Broward	123	400	292,681	43,747	13%	336,828
Palm Beach	198	456	194,595	27,506	12%	222,557
Hillsborough	147	265	169,511	24,891	13%	194,667
Orange	365	249	195,829	24,700	11%	220,778
Duval	107	199	153,494	17,979	10%	171,672
Pinellas	23	96	129,674	14,191	10%	143,961
Lee	21	29	82,204	13,395	14%	95,628
Polk	30	71	66,837	10,309	13%	77,217
Collier	155	55	44,376	8,249	16%	52,680
Manatee	5	35	61,721	7,078	10%	68,834
Osceola	68	104	41,871	6,687	14%	48,662
Escambia	18	32	50,458	6,302	11%	56,792
Volusia	20	65	53,404	5,657	10%	59,126
Seminole	29	53	50,808	5,633	10%	56,494
Pasco	52	38	49,531	5,260	10%	54,829
Sarasota	28	35	55,576	4,567	8%	60,178
Brevard	4	51	66,352	4,561	6%	70,964
St. Lucie	216	46	30,109	3,896	11%	34,051
Lake	44	32	48,095	3,594	7%	51,721
Leon	19	87	43,189	3,319	7%	46,595
Martin	40	33	19,087	3,250	15%	22,370
Marion	341	24	33,851	2,826	8%	36,701
Alachua	4	20	56,246	2,809	5%	59,075
St. Johns	32	30	30,331	2,670	8%	33,031
Bay	2	27	16,915	2,269	12%	19,211
Clay	10	13	25,595	2,249	8%	27,857
Okaloosa	24	29	20,370	2,104	9%	22,503
Santa Rosa	1	16	19,219	2,090	10%	21,325
Indian River	35	10	19,955	1,729	8%	21,694
Charlotte	5	9	18,363	1,536	8%	19,908
Columbia	3	38	8,428	1,523	15%	9,989
Hendry	3	11	5,686	1,427	20%	7,124
Hernando		6	14,001	1,273	8%	15,280
Desoto	6	18	7,230	1,112	13%	8,360
Putnam	3	5	9,159	1,050	10%	10,214
Monroe	34	9	9,176	978	10%	10,163
Gadsden		35	7,837	957	11%	8,829
Suwannee	1	8	5,063	934	16%	6,005
Jackson	2	13	7,202	916	11%	8,131
Citrus	8	8	13,952	911	6%	14,871
Walton	1	39	6,190	898	13%	7,127
Sumter	49	12	12,951	881	6%	13,844
Highlands	6	13	12,087	876	7%	12,976
Nassau	18	18	11,331	838	7%	12,187
Hardee		3	3,136	726	19%	3,865
Flagler	3	14	11,329	696	6%	12,039
Okeechobee	2	7	4,543	694	13%	5,244

COVID-19: All persons with tests reported

Data through Jul 21, 2020 verified as of Jul 22, 2020 at 09:25 AM

Data in this report are provisional and subject to change.

The table below includes persons with laboratory results that the Department of Health has received electronically or by mail/fax for Florida residents and non-Florida residents.

County	Awaiting testing	Inconclusive	Negative	Positive	Percent positive	Total tested
Hamilton	1	2	3,081	523	15%	3,606
Madison	1	25	3,890	492	11%	4,407
Unknown		29	3,957	420	10%	4,406
Levy		8	4,474	414	8%	4,896
Washington	3	1	2,904	367	11%	3,272
Wakulla	2	10	3,884	341	8%	4,235
Holmes		7	3,230	331	9%	3,568
Liberty		1	2,536	320	11%	2,857
Glades		1	650	289	31%	940
Gilchrist	1	6	2,820	277	9%	3,103
Baker	9		3,473	250	7%	3,723
Calhoun	1	6	1,653	230	12%	1,889
Taylor		2	2,215	226	9%	2,443
Bradford	1	2	3,347	205	6%	3,554
Gulf	1	4	2,706	205	7%	2,915
Dixie		2	1,882	203	10%	2,087
Union		1	2,739	161	6%	2,901
Jefferson	1	1	1,708	122	7%	1,831
Franklin	1	1	2,152	81	4%	2,234
Lafayette		2	692	74	10%	768
Total	2,524	4,030	2,775,092	379,619	12%	3,158,741

COVID-19: testing by laboratory

Data through Jul 21, 2020 verified as of Jul 22, 2020 at 09:25 AM

Data in this report are provisional and subject to change.

The numbers in the table below represent the number for whom test results were received by the Department of Health. A person can be tested by more than one laboratory and can have both positive and negative results. **Therefore, the sum of the numbers in each column will be larger than the total number of people tested.**

Reporting lab	Inconclusive	Negative	Positive	Percent positive	Total
QUEST DIAGNOSTICS - TAMPA	2,462	532,036	70,847	12%	605,345
LABORATORY CORPORATION OF AMERICA	637	504,316	72,310	13%	577,263
BIO REFERENCE LABORATORIES, INC	2,797	344,911	61,178	15%	408,886
GENETWORX	662	316,169	26,907	8%	343,738
REALTOX LABS LLC	1,297	152,414	22,952	13%	176,663
ADVENT HEALTH LAB	108	99,973	13,591	12%	113,672
NORTHWEST LABORATORY	104	106,939	4,027	4%	111,070
CURATIVE_LABS	1,417	86,822	3,561	4%	91,800
MEDICAL DIAGNOSTIC LABORATORIES	548	63,984	8,790	12%	73,322
KORVALABS, INC	506	67,873	2,573	4%	70,952
BIOCOLLECTIONS WORLDWIDE, INC	120	48,126	7,580	14%	55,826
MAYO CLINIC LABORATORIES	82	49,941	4,585	8%	54,608
QUEST DIAGNOSTICS NICHOLS INSTITUTE, INC.	153	43,875	5,275	11%	49,303
MEMORIAL REGIONAL HOSPITAL SOUTH	18	39,658	9,421	19%	49,097
BAYCARE LABORATORIES LLC	215	43,778	4,552	9%	48,545
ORLANDO REG MED CENTER CLINICAL LAB	356	35,927	4,382	11%	40,665
SACRED HEART HOSPITAL LABORATORY	2	36,455	3,869	10%	40,326
BPHL-JACKSONVILLE	11	32,549	6,114	16%	38,674
DIATHERIX LABORATORIES		31,367	3,960	11%	35,327
TAMPA GENERAL HOSPITAL	4	32,603	2,399	7%	35,006
TESTING MATTERS INC		30,716	4,138	12%	34,854
UF PATHLABS	33	32,886	1,098	3%	34,017
JACKSON MEMORIAL HOSPITAL CLINICAL LAB	79	23,886	5,375	18%	29,340
VIRACOR-EUROFINS LABORATORIES		22,094	7,062	24%	29,156
ARUP LABORATORIES		27,149	1,890	7%	29,039
BPHL-MIAMI	176	20,511	3,881	16%	24,568
ELABNETWORK	1	22,470	1,709	7%	24,180
BPHL-TAMPA (SPECTRUM BLVD)	43	18,659	2,913	13%	21,615
SHANDS AT THE UNIVERSITY OF FLORIDA	48	19,835	914	4%	20,797
AIT LABORATORIES		17,728	2,015	10%	19,743
LAKELAND REGIONAL MEDICAL CENTER	36	15,447	1,691	10%	17,174
ST VINCENT'S MEDICAL CENTER - RIVERSIDE	1	14,876	1,649	10%	16,526
WALGREENS	9	13,630	2,174	14%	15,813
CAPE CORAL HOSPITAL CLINICAL LABORATORY		13,130	2,351	15%	15,481
BROWARD GENERAL MEDICAL CENTER-CLINICAL LAB	2	11,928	1,590	12%	13,520
BAPTIST HOSPITAL OF MIAMI CLINICAL LABORATORY	5	9,697	1,777	15%	11,479
STATLAB_MOBILE		10,664	756	7%	11,420
MAKO MEDICAL LABORATORIES	240	9,530	1,618	14%	11,388
SHANDS JACKSONVILLE MEDICAL CENTER INC	31	10,371	827	7%	11,229
CLEVELAND CLINIC HOSPITAL LAB	3	9,709	933	9%	10,645
FLORIDA HOSPITAL - TAMPA	5	9,427	866	8%	10,298
BAPTIST MEDICAL CENTER JACKSONVILLE	1	9,686	585	6%	10,272
ADVENTHEALTH DAYTONA BEACH	16	9,466	661	7%	10,143
NAPLES COMMUNITY HOSPITAL	12	8,925	968	10%	9,905
ST JOSEPHS HOSPITAL LABORATORY	7	7,895	960	11%	8,862
PALMETTO GENERAL HOSPITAL LAB	2	6,647	2,073	24%	8,722
INTEGRATED REGIONAL LABORATORIES LLP		6,922	1,160	14%	8,082

COVID-19: testing by laboratory

Data through Jul 21, 2020 verified as of Jul 22, 2020 at 09:25 AM

Data in this report are provisional and subject to change.

The numbers in the table below represent the number for whom test results were received by the Department of Health. A person can be tested by more than one laboratory and can have both positive and negative results. **Therefore, the sum of the numbers in each column will be larger than the total number of people tested.**

Reporting lab	Inconclusive	Negative	Positive	Percent positive	Total
MOUNT SINAI MEDICAL CENTER	3	7,019	771	10%	7,793
LABCORP BURLINGTON (ELR)	2	7,475	243	3%	7,720
MORTON PLANT HOSPITAL-ADLER INSTITUTE	7	6,822	545	7%	7,374
JFK MEDICAL CENTER LAB	1	6,205	1,166	16%	7,372
SARASOTA MEMORIAL HOSPITAL MAIN LAB	12	6,568	612	9%	7,192
REAL DIAGNOSTICS	77	6,449	465	7%	6,991
TALLAHASSEE MEMORIAL HOSPITAL	1	6,501	488	7%	6,990
SAINT MARY'S MEDICAL CENTER	9	5,880	921	14%	6,810
SOUTH MIAMI HOSPITAL LAB	8	5,900	894	13%	6,802
NORTH FLORIDA REGIONAL MEDICAL CENTER		6,209	525	8%	6,734
BRANDON REGIONAL HOSPITAL		5,484	1,008	16%	6,492
MILLENNIUM PHYSICIAN GROUP		5,336	1,053	16%	6,389
MEMORIAL REGIONAL HOSPITAL CLINICAL LABORATORY	7	5,659	438	7%	6,104
UNIVERSITY OF MIAMI HOSPITAL	9	4,836	1,204	20%	6,049
WELLINGTON REGIONAL MED CTR LAB	3	5,191	851	14%	6,045
FLORIDA HOSPITAL WATERMAN LABORATORY	11	5,552	417	7%	5,980
INDIAN RIVER MEDICAL CENTER LAB		5,572	307	5%	5,879
ECCO LAB GROUP CO	173	4,467	1,209	21%	5,849
NICKLAUS CHILDREN'S HOSPITAL	10	4,947	864	15%	5,821
JUPITER MEDICAL CENTER LAB	12	5,022	766	13%	5,800
LARKIN COMMUNITY HOSPITAL	10	4,656	862	16%	5,528
BAPTIST HOSPITAL OF MIAMI MOLECULAR DIAGNOSTICS	45	4,447	639	12%	5,131
DELRAY MEDICAL CENTER	2	4,413	589	12%	5,004
PANCARE OF FLORIDA INC		4,846	157	3%	5,003
AEGIS SCIENCES CORPORATION	26	4,582	315	6%	4,923
ST ANTHONY'S HOSPITAL LAB	10	4,305	574	12%	4,889
HOMESTEAD HOSPITAL CLINICAL LABORATORY		3,843	1,006	21%	4,849
MEMORIAL HOSPITAL JACKSONVILLE	8	3,844	959	20%	4,811
ARNOLD PALMER MEDICAL CENTER CLINICAL LAB		4,526	102	2%	4,628
WINTER HAVEN HOSPITAL CLINICAL LABORATORY	1	3,760	696	16%	4,457
WEST KENDALL BAPTIST HOSPITAL LABORATORY	2	3,599	853	19%	4,454
OSCEOLA REGIONAL MEDICAL CENTER	1	3,630	700	16%	4,331
ST JOSEPHS HOSPITAL SOUTH LABORATORY	4	3,704	548	13%	4,256
GOOD SAMARITAN MEDICAL CENTER LAB	1	3,392	680	17%	4,073
MEASE COUNTRYSIDE LAB		3,683	389	10%	4,072
ORANGE PARK MEDICAL CENTER	4	3,115	798	20%	3,917
GULF COAST MEDICAL CENTER MICROLAB		2,870	968	25%	3,838
BAPTIST MEDICAL CENTER SOUTH		3,561	276	7%	3,837
QUEST DIAGNOSTICS NICHOLS INSTITUTE - SJC (ELR)	10	3,241	459	12%	3,710
LAWNWOOD REGIONAL MEDICAL CENTER	1	3,149	508	14%	3,658
FLORIDA HOSPITAL HEARTLAND MED CTR CLINICAL LAB	1	3,204	283	8%	3,488
WESTSIDE REGIONAL MED CTR	2	2,810	614	18%	3,426
WEST BOCA MEDICAL CENTER LAB		3,008	373	11%	3,381
NEW YORK STATE ELR - SUNRISE MEDICAL LABORATORIES		3,288	77	2%	3,365

COVID-19: testing by laboratory

Data through Jul 21, 2020 verified as of Jul 22, 2020 at 09:25 AM

Data in this report are provisional and subject to change.

The numbers in the table below represent the number for whom test results were received by the Department of Health. A person can be tested by more than one laboratory and can have both positive and negative results. **Therefore, the sum of the numbers in each column will be larger than the total number of people tested.**

Reporting lab	Inconclusive	Negative	Positive	Percent positive	Total
HALIFAX MEDICAL CENTER LAB	9	2,894	461	14%	3,364
MANATEE MEMORIAL HOSPITAL		2,998	360	11%	3,358
MEMORIAL HOSPITAL WEST LABORATORY SERVICES	8	2,993	317	10%	3,318
BAPTIST HOSPITAL LABORATORY	4	2,811	481	15%	3,296
AVENTURA HOSPITAL LAB		2,415	858	26%	3,273
Lee Memorial Hospital		2,659	605	19%	3,264
FLORIDA HOSPITAL WESLEY CHAPEL	1	2,966	291	9%	3,258
HEALTH PARK MEDICAL CENTER CLINICAL LAB		2,585	654	20%	3,239
WEST FLORIDA HOSPITAL LAB		2,547	676	21%	3,223
MERCY HOSPITAL A CAMPUS OF PLANTATION GEN HOSP LAB	1	2,401	799	25%	3,201
CORAL GABLES HOSPITAL CLINICAL LABORATORY		2,426	752	24%	3,178
APPLIED INGENUITY DIAGNOSTICS LLC		2,987	165	5%	3,152
BROWARD HEALTH NORTH CLINICAL LABORATORY		2,713	437	14%	3,150
NCH NORTH NAPLES HOSPITAL LAB	1	2,815	331	11%	3,147
PALM BEACH GARDENS MEDICAL CTR LAB		2,811	317	10%	3,128
CLEVELAND CLINIC MARTIN SOUTH HOSPITAL		2,839	271	9%	3,110
LARGO MEDICAL CENTER		2,680	415	13%	3,095
BETHESDA HOSPITAL EAST		2,751	339	11%	3,090
DOCTORS HOSPITAL	2	2,445	625	20%	3,072
CORAL SPRINGS MED CTR		2,769	302	10%	3,071
PALMS WEST HOSPITAL LAB	2	2,372	611	20%	2,985
NORTHWEST MEDICAL CENTER	1	2,287	683	23%	2,971
OAK HILL HOSPITAL		2,699	271	9%	2,970
NORTH SHORE MEDICAL CENTER		2,284	682	23%	2,966
DRS CLACK SPENCER WHITE & MCCORMACK PA D/B/A		2,535	419	14%	2,954
FLORIDA HOSPITAL ZEPHYRHILLS		2,646	196	7%	2,842
MOFFITT CANCER CENTER	5	2,803	26	1%	2,834
FLORIDA HOSPITAL FLAGLER	2	2,579	159	6%	2,740
BLAKE MEDICAL CENTER		2,135	470	18%	2,605
MARTIN HOSPITAL SOUTH LAB		2,504	90	3%	2,594
QUEST DIAGNOSTICS - WEST HILLS	11	2,451	107	4%	2,569
Capital Regional Medical Ctr		2,105	449	18%	2,554
FLORIDA MEDICAL CENTER - A CAMPUS OF NORTH SHORE	2	2,086	414	17%	2,502
REGIONAL MEDICAL CENTER BAYONET POINT	1	2,300	185	7%	2,486
FLORIDA HOSPITAL OF CARROLLWOOD		2,043	357	15%	2,400
NEMOURS CHILDRENS HOSPITAL		2,353	45	2%	2,398
PLANTATION GENERAL HOSPITAL		1,745	603	26%	2,348
BAYFRONT MEDICAL CENTER	7	1,727	604	26%	2,338
FLORIDA HOSPITAL DELAND		1,925	380	16%	2,305
NORTHSIDE HOSPITAL AND HEART INSTITUTE		1,969	328	14%	2,297
MEDICAL CENTER OF TRINITY CLINICAL LABORATORY		1,922	342	15%	2,264
MORTON PLANT-MEASE		2,080	166	7%	2,246
ST JOSEPHS NORTH HOSPITAL LAB		1,986	250	11%	2,236
IMPERIAL POINT MEDICAL CENTER		1,965	213	10%	2,178
OCALA REGIONAL MEDICAL CENTER		1,948	198	9%	2,146

COVID-19: testing by laboratory

Data through Jul 21, 2020 verified as of Jul 22, 2020 at 09:25 AM

Data in this report are provisional and subject to change.

The numbers in the table below represent the number for whom test results were received by the Department of Health. A person can be tested by more than one laboratory and can have both positive and negative results. **Therefore, the sum of the numbers in each column will be larger than the total number of people tested.**

Reporting lab	Inconclusive	Negative	Positive	Percent positive	Total
LAKE CITY MEDICAL CENTER		1,661	460	22%	2,121
BAPTIST MEDICAL CENTER - BEACHES		1,982	124	6%	2,106
MARTIN MEMORIAL HEALTH SYSTEM LABORATORY		1,880	154	8%	2,034
CARDIOTROPIC LABS		1,544	478	24%	2,022
LAKEWOOD RANCH MEDICAL CENTER		1,815	189	9%	2,004
DR. P. PHILLIPS HOSPITAL		1,926	36	2%	1,962
CENTRAL FLORIDA REGIONAL HOSPITAL		1,679	263	14%	1,942
SUNPATH MEDICAL DIAGNOSTICS LABORATORY	15	1,703	189	10%	1,907
GULF COAST MEDICAL CENTER LAB		1,568	335	18%	1,903
SOUTH FLORIDA BAPTIST HOSPITAL MICRO	1	1,583	283	15%	1,867
ST LUCIE MEDICAL CENTER		1,551	314	17%	1,865
WESTCHESTER HOSPITAL	12	1,527	292	16%	1,831
SOUTH LAKE HOSPITAL CLINICAL LAB		1,722	32	2%	1,754
POINCIANA MEDICAL CENTER		1,272	462	27%	1,734
RUTGERS CLINICAL GENOMICS LABORATORY	3	1,615	104	6%	1,722
BAPTIST MEDICAL CENTER - NASSAU		1,567	80	5%	1,647
FLORIDA HOSPITAL NORTH PINELLAS	5	1,518	120	7%	1,643
QUEST DIAGNOSTICS	2	1,368	241	15%	1,611
UNIVERSITY HOSPITAL AND MEDICAL CENTER		1,207	402	25%	1,609
PHYSICIANS REGIONAL MEDICAL CENTER - PINE RIDGE RD		1,287	292	18%	1,579
MEMORIAL HOSPITAL- MIRAMAR	10	1,442	120	8%	1,572
LEESBURG REGIONAL MEDICAL CENTER		1,383	165	11%	1,548
OPTEO LABORATORY		1,500	29	2%	1,529
WEST PALM HOSPITAL LAB		1,306	219	14%	1,525
MEMORIAL HOSPITAL MICRO		1,347	165	11%	1,512
LEE HEALTH COCONUT POINT CLINICAL LAB	1	1,189	285	19%	1,475
WEST MARION COMMUNITY HOSPITAL LAB		1,345	113	8%	1,458
ST PETERSBURG GENERAL HOSPITAL		1,038	414	29%	1,452
SOUTH SEMINOLE HOSPITAL LABORATORY		1,373	47	3%	1,420
MEASE DUNEDIN HOSPITAL	1	1,271	137	10%	1,409
CITRUS MEMORIAL HOSPITAL LABORATORY		1,353	42	3%	1,395
QUEST DIAGNOSTICS LENEXA	5	1,256	84	6%	1,345
HIALEAH HOSPITAL	3	984	358	27%	1,345
MEDCOMP SCIENCES LLC	21	897	426	32%	1,344
MEMORIAL HOSPITAL PEMBROKE	3	1,187	152	11%	1,342
OVIEDO MEDICAL CENTER		1,127	208	16%	1,335
ST VINCENT'S MEDICAL CENTER - SOUTHSIDE		1,307	26	2%	1,333
FORT WALTON BEACH MEDICAL CENTER		1,159	153	12%	1,312
BAPTIST NORTH EMERGENCY CENTER		920	388	30%	1,308
FLORIDA HOSPITAL FISH MEMORIAL		1,068	229	18%	1,297
QUEST NEW ENGLAND	1	1,247	40	3%	1,288
DOCTORS HOSPITAL OF SARASOTA CLINICAL LABORATORY		1,120	123	10%	1,243
VISTA CLINICAL		743	492	40%	1,235
CLINICORE LABS		1,112	88	7%	1,200
PALMS OF PASADENA HOSPITAL		997	167	14%	1,164
LOWER KEYS MEDICAL CENTER		1,024	85	8%	1,109
QUEST DIAGNOSTICS - ATLANTA		936	166	15%	1,102

COVID-19: testing by laboratory

Data through Jul 21, 2020 verified as of Jul 22, 2020 at 09:25 AM

Data in this report are provisional and subject to change.

The numbers in the table below represent the number for whom test results were received by the Department of Health. A person can be tested by more than one laboratory and can have both positive and negative results. **Therefore, the sum of the numbers in each column will be larger than the total number of people tested.**

Reporting lab	Inconclusive	Negative	Positive	Percent positive	Total
UHEALTH CORAL GABLES/LENNAR MED CTR		1,010	78	7%	1,088
CLEVELAND CLINIC TRADITION HOSPITAL		949	123	11%	1,072
RAULERSON HOSPITAL		878	165	16%	1,043
QUEST DIAGNOSTICS - MIRAMAR	6	295	740	71%	1,041
SOUTH BAY HOSPITAL MICRO		863	152	15%	1,015
CLEVELAND CLINIC MARTIN NORTH HOSPITAL		856	140	14%	996
PUTNAM COMMUNITY MEDICAL CENTER		879	116	12%	995
LMHS		901	75	8%	976
BARTOW REGIONAL MEDICAL CENTER	1	821	141	15%	963
BMCT Molecular Diagnostics Subsection		758	190	20%	948
PHYSICIANS REGIONAL MEDICAL CENTER - COLLIER BLVD	1	760	181	19%	942
ORLANDO VA MEDICAL CENTER		853	86	9%	939
LEON MEDICAL CENTERS LLC		695	225	24%	920
THE VILLAGES REGIONAL HOSPITAL		827	91	10%	918
TWIN CITIES HOSPITAL		849	68	7%	917
VIKOR SCIENTIFIC	2	601	305	34%	908
BETHESDA HOSPITAL WEST		793	72	8%	865
AMERICAN HEALTH ASSOCIATES	5	487	356	42%	848
ADVENTHEALTH OCALA LABORATORY		688	147	18%	835
SYNERGY LABORATORIES	2	766	51	6%	819
FLORIDA HOSPITAL ORLANDO		745	53	7%	798
ST VINCENTS CLAY COUNTY		775	23	3%	798
ANNE BATES LEACH EYE HOSPITAL/ ABLEH MICROBIOLOGY LABORATORY		771	23	3%	794
HIGHLANDS REGIONAL MEDICAL CENTER		698	85	11%	783
LAKESIDE MEDICAL CENTER		505	275	35%	780
P4 CLINICAL, LLC	9	645	125	16%	779
GULF BREEZE HOSPITAL LAB	1	614	95	13%	710
AVENTUS BIOLABS	1	380	303	44%	684
ENGLEWOOD COMMUNITY HOSPITAL		627	52	8%	679
QUEST DIAGNOSTICS INFECTIOUS DISEASE INC		290	387	57%	677
VISTA CLINICAL DIAGNOSTICS		357	304	46%	661
ACCESSDX	6	355	289	44%	650
SACRED HEART-EMERALD COAST		540	97	15%	637
CAPSTONE HEALTHCARE		425	210	33%	635
BAPTIST EMERGENCY CENTER OAKLEAF		510	103	17%	613
ACCESS MEDICAL LABORATORIES		229	338	60%	567
MARINERS HOSPITAL		476	73	13%	549
ORLANDO HEALTH		11	513	98%	524
EGLIN AIRFORCE BASE LAB		478	38	7%	516
BAPTIST HEALTH EMERGENCY CENTER COUNTRY WALK		436	78	15%	514
QUEST DIAGNOSTICS WOOD DALE		453	46	9%	499
BAPTIST EMERGENCY CENTER CLAY		434	65	13%	499
PATIENTS CHOICE LABORATORIES		178	307	63%	485
LAB24 INC			475	100%	475
VAMC ORLANDO		296	172	37%	468
NIGHT LITE PEDIATRICS		289	154	35%	443
NCH HEALTHCARE SYSTEM MICROBIOLOGY LAB		1	441	100%	442

COVID-19: testing by laboratory

Data through Jul 21, 2020 verified as of Jul 22, 2020 at 09:25 AM

Data in this report are provisional and subject to change.

The numbers in the table below represent the number for whom test results were received by the Department of Health. A person can be tested by more than one laboratory and can have both positive and negative results. **Therefore, the sum of the numbers in each column will be larger than the total number of people tested.**

Reporting lab	Inconclusive	Negative	Positive	Percent positive	Total
UNIVERSITY OF MIAMI HOSPITAL & CLINICS	1	401	39	9%	441
MARTIN MEMORIAL HEALTH SYSTEMS LABORATORY		407	33	8%	440
LEE MEMORIAL HOSPITAL LAB			435	100%	435
PANCARE OF FLORIDA, INC			435	100%	435
QUEST	3	76	330	81%	409
BARDMOOR LABORATORY	1	346	55	14%	402
LABCORP RTP	1	39	352	90%	392
QUEST DIAGNOSTICS - IRVING	6	225	159	41%	390
HEALTHQUEST ESOTERICS		66	321	83%	387
PATHNOSTICS		22	361	94%	383
WALGREEN CO	1	335	45	12%	381
AVERO DIAGNOSTICS - IRVING		332	43	11%	375
QUEST DIAGNOSTICS NICHOLS INSTITUTE	5	351	16	4%	372
SOUTHEAST ALABAMA MEDICAL CENT		337	27	7%	364
NCH NORTHEAST		232	129	36%	361
TAMPA COMMUNITY HOSPITAL		225	136	38%	361
NONE		185	164	47%	349
JACKSON HOSPITAL LAB		310	27	8%	337
PWN HEALTH	1	155	174	53%	330
MEMORIAL PEMBROKE 24/7 CARE CENTER		240	84	26%	324
BIOREFERENCE LABORATORIES		25	297	92%	322
CLARITY LABS		272	49	15%	321
BOSTON HEART DIAGNOSTICS CORP		305	14	4%	319
DAVITA LABS		289	26	8%	315
ADVANCE MEDICAL OF NAPLES			310	100%	310
APPLIED INGENUITY DIAGNOSTICS		274	27	9%	301
INFORM DIAGNOSTICS		295	2	1%	297
PATIENTS FIRST - MAHAN DRIVE		161	136	46%	297
BIO COLLECTIONS INC	1	151	139	48%	291
LUMINUS DIAGNOSTICS		209	80	28%	289
DYNIX DIAGNOSTICS		187	97	34%	284
JACKSON HOSPITAL CLINICAL LABORATORY		229	55	19%	284
UHEALTH DEERFIELD BEACH/UMSYLVESTER DEERFIELD BEACH LABORATORY	1	255	20	7%	276
ECCOLAB GROUP	1	73	195	72%	269
NEW YORK STATE ELR - NORTH SHORE LONG ISLAND JEWISH HEALTH		250	19	7%	269
NEW YORK STATE ELR - Lenco Medical Laboratory		253	12	5%	265
PATIENT'S FIRST		3	253	99%	256
MARTIN MEMORIAL LABORATORY AT ST LUCIE WEST		217	34	14%	251
UAB HIGHLANDS LABORATORY		249	1	0%	250
PHYSICIANS STAT LAB		133	112	46%	245
NEW YORK STATE ELR - NYU HOSPITALS CENTER CLINICAL LABORATORIES		229	10	4%	239
NEW YORK STATE ELR - DEPARTMENT OF CLINICAL LABS		232	4	2%	236
LABCORP		19	215	92%	234
MAKO GENOMICS		218	11	5%	229
MINUTECLINIC LLC #3703		192	30	14%	222
FLO-MEDILAB SERVICES		80	140	64%	220
GENESIS REFERENCE LABORATORIES		1	216	100%	217

COVID-19: testing by laboratory

Data through Jul 21, 2020 verified as of Jul 22, 2020 at 09:25 AM

Data in this report are provisional and subject to change.

The numbers in the table below represent the number for whom test results were received by the Department of Health. A person can be tested by more than one laboratory and can have both positive and negative results. **Therefore, the sum of the numbers in each column will be larger than the total number of people tested.**

Reporting lab	Inconclusive	Negative	Positive	Percent positive	Total
MEDSCAN LABORATORY INC		136	74	35%	210
Assurance Scientific Laboratories		167	43	20%	210
THERADOC		150	58	28%	208
NCF DIAGNOSTICS & DNA TECHNOLOGIES	10	14	181	88%	205
CORE DIAGNOSTIC LABORATORIES LLC		174	28	14%	202
LAB CORP	1	65	135	67%	201
DESOTO MEMORIAL HOSPITAL CLINICAL LABORATORY	2	145	54	27%	201
JAY HOSPITAL CLINICAL LABORATORY		154	37	19%	191
MILLENNIUM PATHOLOGY			189	100%	189
HENDRY REGIONAL MEDICAL CENTER		2	185	99%	187
BAPTIST MD ANDERSON CANCER CENTER		172			172
ST CLOUD REGIONAL MEDICAL CENTER		126	44	26%	170
EXPRESS GENE MOLECULAR DIAGNOSTIC LABORATORY		2	166	99%	168
NORTH FLORIDA PEDIATRICS-TALLAHASSEE		149	15	9%	164
GENESIS MEDICAL LABORATORY MIAMI FL.		78	82	51%	160
TENNESSEE DOH - NASHVILLE	1	144	14	9%	159
ADVENTHEALTH LAB			154	100%	154
PATHGROUP LABS LLC		90	63	41%	153
ORLANDO VETERANS AFFAIRS MEDICAL CENTER		32	119	79%	151
HOLMES REGIONAL MEDICAL CENTER		3	144	98%	147
ORLANDO VAMC		79	68	46%	147
SMA SPECIALITY MEDICAL LAB		53	93	64%	146
CURATIVE LABS		3	142	98%	145
SANFORD REFERENCE LAB		145			145
UNKNOWN		8	136	94%	144
BIOCERNA LLC	2	98	43	30%	143
ASCEND CLINICAL		137	3	2%	140
NCH HEALTHCARE BONITA		95	45	32%	140
NEW YORK STATE ELR - NEW YORK PRESBYTERIAN HOSPITAL CUMC CLINICAL		125	13	9%	138
BAY PINES VAMC CLINICAL LABORATORY		2	132	99%	134
LABCORP TAMPA	1	16	115	87%	132
MEMPHIS PATHOLOGY LABORATORY	1	124	5	4%	130
FLORIDA HOSPITAL WAUCHULA		66	64	49%	130
SUNRISE MEDICAL LABORATORIES		96	34	26%	130
FLAGLER HOSPITAL	3	15	111	86%	129
BMHSI-AEL MICROBIOLOGY LABORATORY	2	102	24	19%	128
AKESOGEN		119	7	6%	126
UAB UNIVERSITY OF ALABAMA HOSPITAL LAB		120	3	2%	123
LABTECH DIAGNOSTIC		83	40	33%	123
QUALITOX LABORATORIES		96	24	20%	120
NEO GENOMICS - FORT MYERS		117	3	3%	120
MILLENNIUM PATHOLOGY/MICROBIOLOGY LABORATORY			120	100%	120
NEW YORK STATE ELR - MOUNT SINAI LABORATORY		112	8	7%	120
VAMC WEST PALM LAB			120	100%	120
FLORIDA LABORATORY ANALYSIS		27	91	77%	118
JAMES A. HALEY VETERANS MICRO LAB			118	100%	118
BUREAU OF CLINICAL LABORATORIES		98	18	16%	116

COVID-19: testing by laboratory

Data through Jul 21, 2020 verified as of Jul 22, 2020 at 09:25 AM

Data in this report are provisional and subject to change.

The numbers in the table below represent the number for whom test results were received by the Department of Health. A person can be tested by more than one laboratory and can have both positive and negative results. **Therefore, the sum of the numbers in each column will be larger than the total number of people tested.**

Reporting lab	Inconclusive	Negative	Positive	Percent positive	Total
NONA SCIENTIFIC			115	100%	115
PALM BEACH COUNTY HEALTH DEPT LAB		112	2	2%	114
ALLIED HEALTH FORT PIERCE		112			112
HOLY CROSS HOSPITAL LABORATORY			111	100%	111
INTEGRATED REGIONAL LABORATORIES		99	11	10%	110
NEW YORK STATE ELR - NEW YORK HOSPITAL LABORATORIES		104	5	5%	109
AVECINA MEDICAL OAKLEAF		7	101	94%	108
LEHIGH REGIONAL MEDICAL CENTER LAB		96	12	11%	108
ASAP LAB LLC		90	17	16%	107
MILLENNIUM LAB SERVICES			104	100%	104
VETERANS AFFAIRS MEDICAL CENTER LAB			101	100%	101
NITE LITE PEDIATRICS		56	45	45%	101
STEWART REFERENCE LABORATORY			97	100%	97
CENTRA CARE		1	94	99%	95
IRL MARKET LAB		60	34	36%	94
ROSEN MEDICAL CENTER		86	7	8%	93
DIAGNOSTIC SOLUTIONS		3	90	97%	93
TEMPUS CLINICAL LABORATORY		80	12	13%	92
GESSLER CLINIC			92	100%	92
USAFSAM/PHE		23	67	74%	90
SPARROW HEALTHCARE		1	88	99%	89
NEW YORK STATE ELR - ENZO CLINICAL LABS INC		86	1	1%	87
GENETWORKX		15	71	83%	86
MEDICAL DIAGNOSTICS LABORATORIES,INC		16	69	81%	85
MOLECULAR INFECTIOUS DISEASES		81	3	4%	84
MICROGEN DX		1	82	99%	83
MARTIN MEMORIAL MEDICAL CENTER LAB		12	69	85%	81
ADVENT HEALTH DAYTONA		1	78	99%	79
ACUTIS DIAGNOSTICS	1	62	12	16%	75
ST JUDE CHILDREN'S RESEARCH HOSPITAL		68	6	8%	74
CURATIVE LABS INC		12	62	84%	74
UR MEDICINE LABS- CENTRAL LABORATORY		73			73
WUESTHOFF REF LABORATORY			73	100%	73
MAYO CLINIC LABS - ROCHESTER MAIN CAMPUS		71	1	1%	72
FLORIDA HOSPITAL HEARTLAND MED CTR LAKE PLACID		53	18	25%	71
FLORIDA COMMUNITY HEALTH CENTERS INC			70	100%	70
MEDARBOR DIAGNOSTICS		1	68	99%	69
Highlands Regional Hospital		63	6	9%	69
CENTRAL FLORIDA HEALTH CARE		46	21	31%	67
BAPTIST HEALTH SOUTH FLORIDA		3	64	96%	67
VAMC BAY PINES		1	66	99%	67
QPS, LLC		63	1	2%	64
DAVITA LABORATORY SERVICES		48	14	23%	62
SANTA ROSA MEDICAL CENTER			61	100%	61
AEL- MEMPHIS		17	44	72%	61
C.W. BILL YOUNG VA MEDICAL CENTER		3	58	95%	61
REAL DIAGNOSTIC	1	40	19	32%	60

COVID-19: testing by laboratory

Data through Jul 21, 2020 verified as of Jul 22, 2020 at 09:25 AM

Data in this report are provisional and subject to change.

The numbers in the table below represent the number for whom test results were received by the Department of Health. A person can be tested by more than one laboratory and can have both positive and negative results. **Therefore, the sum of the numbers in each column will be larger than the total number of people tested.**

Reporting lab	Inconclusive	Negative	Positive	Percent positive	Total
AVERO DIAGNOSTICS		46	14	23%	60
FAST TRACK URGENT CARE CENTER			60	100%	60
HOLY CROSS HOSPITAL		1	58	98%	59
AVECINA MEDICAL JULINGTON		6	52	90%	58
CENTRACARE		1	57	98%	58
LABCORP BURLINGTON (LPP)		12	46	79%	58
AVECINA MEDICAL SOUTHSIDE		32	26	45%	58
FINLAY CLINICAL LABORATORY		24	34	59%	58
GENE BY GENE			55	100%	55
VAMC LAKE CITY		51	4	7%	55
INTERCOASTAL MEDICAL GROUP			54	100%	54
LEON MEDICAL CENTER			53	100%	53
BROWARD HEALTH MEDICAL CENTER		1	52	98%	53
ORLANDO VA PALMS		2	50	96%	52
SARASOTA CO. HEALTH DEPT # 58		40	11	22%	51
NEW YORK STATE ELR - WADSWORTH HEALTH CENTER		47	3	6%	50
P4 DIAGNOSTIX LABORATORY NETWORK		1	48	98%	49
MILLENIUUM PHYSICIANS GROUP			49	100%	49
AMELIA URGENT CARE			48	100%	48
ARTHREX MEDICAL CENTER		27	20	43%	47
HOSPITAL FOR SPECIAL SURGERY		46	1	2%	47
H LEE MOFFITT CANCER CENTER MICRO		46			46
VHA PUBLIC HEALTH REFERENCE LABORATORY- PALO ALTO		27	19	41%	46
BIOREFERENCE LABORATORY		1	44	98%	45
TOM LEE COMMUNITY HEALTH CENTER			45	100%	45
FULGENT DIAGNOSTICS	3	36	6	13%	45
UNITED CLINICAL LABORATORY LLC			43	100%	43
HURLBURT FIELD CLINIC		23	20	47%	43
HEALTH FIRST-HOLMES REGIONAL			42	100%	42
QUEST TAMPA (NEW YORK ELR)		32	9	22%	41
BAYCARE LAB		1	40	98%	41
NEW YORK STATE ELR - EMPIRECITY LABORATORIES		35	5	13%	40
EGLIN REGIONAL MEDICAL CENTER		4	35	90%	39
FISHERMENS HOSPITAL CLINICAL LAB		37	2	5%	39
NAVY HOSPITAL			39	100%	39
MAVERICK LABS			39	100%	39
FLORIDA HOSPITAL NEW SMYRNA		4	35	90%	39
MORTON PLANT HOSPITAL			37	100%	37
VAMC GAINESVILLE		2	35	95%	37
PROVIDENCE HOSPITAL LABORATORY		35	1	3%	36
DYNAMIC MEDICAL USA			36	100%	36
RCA LABORATORY SERVICES, LLC		7	29	81%	36
CLINICAL REFERENCE LABORATORY		31	4	11%	35
IRL		4	31	89%	35
ST. CLOUD MEDICAL GROUP		35			35
FLORIDA WOMAN CARE LABORATORY LLC		28	6	18%	34
VA MEDICAL CENTER		7	26	79%	33

COVID-19: testing by laboratory

Data through Jul 21, 2020 verified as of Jul 22, 2020 at 09:25 AM

Data in this report are provisional and subject to change.

The numbers in the table below represent the number for whom test results were received by the Department of Health. A person can be tested by more than one laboratory and can have both positive and negative results. **Therefore, the sum of the numbers in each column will be larger than the total number of people tested.**

Reporting lab	Inconclusive	Negative	Positive	Percent positive	Total
LAB CORP RTP	1	2	30	91%	33
BAYCARE HEALTH SYSTEM		1	32	97%	33
NEW YORK STATE ELR - KALEIDA HEALTH CENTER FOR LABORATORY		29	4	12%	33
DEPARTMENT OF VETERANS AFFAIRS JAMES A. HALEY VETERANS HOSPITAL			32	100%	32
SMA MEDICAL LABORATORY		8	24	75%	32
SACRED HEART HOSPITAL ON THE GULF		14	18	56%	32
FLORIDA CLINICAL LABORATORY-BIOREFERENCE LABORATORIES		2	30	94%	32
BioReference Laboratories, Inc		21	10	32%	31
DESOTO MEMORIAL HOSPITAL LAB			31	100%	31
QUEST DIAGNOSTICS-VERO BEACH-37TH ST		31			31
LAB CORP TAMPA			30	100%	30
CAREMOUNT MEDICAL - PATHOLOGY		30			30
MEDICAL DIAGNOSTIC LAB		1	29	97%	30
USA HEALTH UNIVERSITY HOSPITAL CLINICAL LABORATORY		30			30
NEW YORK STATE ELR - MONTEFIORE MEDICAL CENTER LABORATORIES - MOSES		23	6	21%	29
ALLSOUTH URGENT CARE			29	100%	29
BAYFRONT HEALTH BROOKSVILLE			29	100%	29
EAST MANATEE FAMILY	1		28	97%	29
SOLARIS DIAGNOSTICS		2	27	93%	29
FAWCETT MEMORIAL HOSPITAL-LAB		1	27	96%	28
SOUTH LAKE HOSPITAL		1	27	96%	28
UNKNOWN - BAD FACILITY CODE		2	26	93%	28
MOBILE INFIRMARY MED CENTER PATH LAB		26	2	7%	28
MID-FLORIDA PATHOLOGY		12	16	57%	28
TRADITION MEDICAL CENTER LABORATORY		7	20	74%	27
FINLAY CLINICAL LABORATORY INC		26	1	4%	27
INTEGRITY LABORATORIES			27	100%	27
NAVAL HOSPITAL - JACKSONVILLE		1	26	96%	27
MORTON PLANT HOSPITAL/LAB		1	26	96%	27
P4CLINICAL	3	1	23	85%	27
325TH MEDICAL GROUP			27	100%	27
AMERICAN PATHOLOGY PARTNERS		25	1	4%	26
CDC		17	9	35%	26
INTERLAB		1	25	96%	26
REFUAH HEALTH CENTER LABORATORY		26			26
ALL CHILDREN'S HOSPITAL LAB		1	25	96%	26
GULF COAST MOLECULAR LABORATORIES		13	12	48%	25
HUNTSVILLE HOSPITAL LABORATORY		19	6	24%	25
PRIVA PATH LABS			25	100%	25
SUNCOAST LABS			25	100%	25
QUEST DIAGNOSTIC INC		2	23	92%	25
ST VINCENT'S BIRMINGHAM LABORATORY		25			25
CAPITAL REGIONAL MEDICAL CENTER		1	24	96%	25
Quest Diag Unspecfd		4	21	84%	25
ADVENTHEALTH CENTRA CARE OVIEDO		6	19	76%	25
TAMPA GENERAL HOSPITAL CLINICAL LAB			25	100%	25
MY CLINICAL LAB			24	100%	24

COVID-19: testing by laboratory

Data through Jul 21, 2020 verified as of Jul 22, 2020 at 09:25 AM

Data in this report are provisional and subject to change.

The numbers in the table below represent the number for whom test results were received by the Department of Health. A person can be tested by more than one laboratory and can have both positive and negative results. **Therefore, the sum of the numbers in each column will be larger than the total number of people tested.**

Reporting lab	Inconclusive	Negative	Positive	Percent positive	Total
NEW YORK STATE ELR - WHITE PLAINS HOSPITAL CENTER LAB		24			24
LABFIRST - DEPARTMENT OF PATHOLOGY		24			24
GENPATH			24	100%	24
CLINICAL RESEARCH SEQUENCING PLATFORM			24	100%	24
ORLANDO REGIONAL MEDICAL CENTER		1	23	96%	24
ACCU REFERENCE MEDICAL LAB			24	100%	24
EXPERTUS LABORATORIES INC		9	14	61%	23
LABORATORY DYNAMICS		20	3	13%	23
AVELLINO LAB USA, INC		21	2	9%	23
LABORATORY CORP OF AMERICA	1	4	18	78%	23
ST JOSEPHS CHILDRENS OUTREACH			23	100%	23
QDX PATHOLOGY SERVICES		13	10	43%	23
AMERICAN RESEARCH LABS		1	21	95%	22
PENNSYLVANIA DEPT OF HEALTH		19	3	14%	22
ST. ANTHONY'S HOSPITAL			22	100%	22
US BIOTEK LABORATORIES			22	100%	22
CHILDREN'S HOSPITAL OF ALABAMA		21			21
NEW YORK STATE ELR - STONY BROOK UNIVERSITY MEDICAL CENTER		18	3	14%	21
JACKSON MEMORIAL HOSPITAL			21	100%	21
PATRICK AIR FORCE BASE		1	20	95%	21
LABCORP BIRMINGHAM		4	17	81%	21
HEALTH FIRST-PALM BAY			21	100%	21
NEW YORK STATE ELR - NEWYORK-PRESBYTERIAN/QUEENS DIAGNOSTIC		20	1	5%	21
QUEST DIAGNOSTICS INC.			20	100%	20
MIAMI BEACH COMMUNITY HEALTH CENTER			20	100%	20
POPLAR HEALTHCARE PLLC	1	10	9	45%	20
ST. CLOUD HOSPITAL		20			20
ST. MARY'S MEDICAL CENTER LAB			20	100%	20
QUEST DIAGNOSTICS NICHOLS INSTITUTE- LPP		3	17	85%	20
MIAMI VAMC			20	100%	20
BROWARD HEALTH CORAL SPRINGS EPIDEMIOLOGY DEPT			20	100%	20
SANFORD LABORATORIES		19			19
BAYFRONT HEALTH ER PINELLAS PARK		12	7	37%	19
NEW PLANT CITY FAMILY CARE			19	100%	19
KENDALL REGIONAL MEDICAL CENTER LAB			19	100%	19
MED HEALTH SERVICES		18	1	5%	19
INTEGRATED REGIONAL LABORATORIES - LARGO			19	100%	19
CAPE CANAVERAL HOSPITAL			19	100%	19
NEW YORK STATE ELR - CATHOLIC HEALTH SYSTEM DEPT LABORATORY		18			18
LABORATORY SPECIALISTS OF MICHIGAN			18	100%	18
STONE WASH CLINICAL LABORATORIES		2	16	89%	18
ADVENT HEALTH FISH MEMORIAL		2	16	89%	18
PACIFIC ANALYTICS			18	100%	18
VA		15	2	12%	17
BAYFRONT		15	2	12%	17
ARUP		4	13	76%	17
UNIVERSITY HEALTH SYSTEM INC		15	2	12%	17

COVID-19: testing by laboratory

Data through Jul 21, 2020 verified as of Jul 22, 2020 at 09:25 AM

Data in this report are provisional and subject to change.

The numbers in the table below represent the number for whom test results were received by the Department of Health. A person can be tested by more than one laboratory and can have both positive and negative results. **Therefore, the sum of the numbers in each column will be larger than the total number of people tested.**

Reporting lab	Inconclusive	Negative	Positive	Percent positive	Total
GRAVITY DIAGNOSTICS		11	6	35%	17
MACDILL AIRFORCE BASE MICRO		14	3	18%	17
CLEVELAND CLINIC FOUNDATION		9	8	47%	17
ASSOCIATED CLINICAL LABORATORIES		17			17
MIAMI VA HEALTHCARE SYSTEM			17	100%	17
NEW YORK STATE ELR - QUEST DIAGNOSTICS NICHOLS		16	1	6%	17
WATSON CLINIC LLP SOUTH			17	100%	17
SEBASTIAN RIVER MEDICAL CENTER		6	10	63%	16
AMELIA EXPRESS CARE			16	100%	16
CITRUS MEMORIAL HEALTH SYSTEM LAB		1	15	94%	16
LAB			16	100%	16
MADISON CORE LABORATORIES		15	1	6%	16
ALL CHILDREN'S HOSPITAL/LAB			16	100%	16
PALO ALTO VA MEDICAL CENTER		1	15	94%	16
PARRISH MEDICAL CENTER		1	15	94%	16
TGH		1	15	94%	16
NEW YORK STATE ELR - BROOKDALE UNIVERSITY HOSPITAL		16			16
VIERA HOSPITAL			15	100%	15
NXGEN MDX		11	4	27%	15
IPSUM DIAGNOSTICS			15	100%	15
QUESTDIAGNOSTICS INCORPORATED		1	14	93%	15
FLORIDA DEPARTMENT OF HEALTH		10	5	33%	15
CENTRA CARE CONWAY			15	100%	15
UNITED CLINICAL LABS			15	100%	15
DIATHERIX		13	2	13%	15
LECONTE MEDICAL CENTER LAB		11	3	21%	14
PREMIER MEDICAL LABORATORY SERVICES			14	100%	14
DOCTORS MEMORIAL HOSPITAL		6	8	57%	14
QUEST DIAGNOSTICS INCORPORATED			14	100%	14
CORE DIAGNOSTIC LABORATORIES			14	100%	14
PHAROS HEALTH		1	13	93%	14
QUEST DIAGNOSTICS NICHOLS INSTITUTE - SJC (LPP)		10	4	29%	14
HEALTH CENTRAL HOSPITAL			14	100%	14
PHYSICIANS REGIONAL HEALTHCARE SYSTEM			14	100%	14
TIDE LABORATORIES		4	10	71%	14
ST. JOSEPHS HOSPITAL			13	100%	13
MEDCOMP SCIENCES			13	100%	13
NEW YORK STATE ELR - UNIVERSITY HOSPITAL, STONY BROOK SOUTHAMPTON		13			13
MILLENNIUM PHYSICIAN GROUP LCC			13	100%	13
XERA MED RESEARCH			13	100%	13
ARCPOINT LABS OF TAMPA			13	100%	13
FULGENT GENETICS		6	6	50%	12
TOTAL RENAL LABORATORIES INC		7	5	42%	12
BAPTIST SOUTH MEDICAL CENTER		2	10	83%	12
NEW YORK STATE ELR - WILSON MEMORIAL REGIONAL MEDICAL CENTER		12			12
SHORELINE PHYSICIAN GROUP			12	100%	12
BIO-REFERENCE LABORATORIES			12	100%	12

COVID-19: testing by laboratory

Data through Jul 21, 2020 verified as of Jul 22, 2020 at 09:25 AM

Data in this report are provisional and subject to change.

The numbers in the table below represent the number for whom test results were received by the Department of Health. A person can be tested by more than one laboratory and can have both positive and negative results. **Therefore, the sum of the numbers in each column will be larger than the total number of people tested.**

Reporting lab	Inconclusive	Negative	Positive	Percent positive	Total
JACKSON HEALTH SYSTEM			12	100%	12
LAB PLUS, LLC AT SAINT THOMAS WEST HOSPITAL		9	3	25%	12
PROTEUS MOLECULAR AND CLINICAL LAB		8	4	33%	12
BAY MEDICAL CENTER SACRED HEART HEALTH SYSTEM			12	100%	12
NORTH SHORE UNIVERSITY HOSPITAL LABORATORY		11	1	8%	12
GARCIA CLINICAL LABORATORY		1	11	92%	12
DEPARTMENT OF VETERANS AFFAIRS MEDICAL CENTER			12	100%	12
PATHGROUP LABS			12	100%	12
SEVEN RIVERS REGIONAL MEDICAL CENTER		1	11	92%	12
ADVANCED URGENT CARE		10	2	17%	12
LABCORP INC		1	11	92%	12
NEW YORK STATE ELR - LENOX HILL HOSPITAL		11	1	8%	12
BROWARD DIALYSIS			12	100%	12
WHITE WILSON MEDICAL CENTER CLINIC			12	100%	12
OUT OF STATE		12			12
FLORIDA DEPT OF HEALTH		4	8	67%	12
ADVENT HEALTH CENTRA CARE: WATERFORD LAKES			12	100%	12
ST FRANCIS HOSPITAL		9	3	25%	12
PALM BAY HOSPITAL		1	11	92%	12
NEW YORK STATE ELR - QUEST DIAGNOSTICS INCORPORATED		9	3	25%	12
LAB INTERMARKET FACILITY LAB			11	100%	11
AMERICAN ESOTERIC LABORATORIES			11	100%	11
DELRAY MEDICAL CENTER LAB			11	100%	11
PARK WEST MEDICAL CENTER		10	1	9%	11
FLORIDA COMMUNITY HEALTH CENTER OF ST. LUCIE			11	100%	11
DOH		1	10	91%	11
GRAVITY DIAGNOSTICS, LLC		3	8	73%	11
NEW YORK STATE ELR - WESTCHESTER MEDICAL CENTER		11			11
INDIAN RIVER MEDICAL CENTER		11			11
SUNQUEST		2	9	82%	11
MOFFITT CANCER CENTER		9	2	18%	11
LABCORP - CLEARWATER		3	7	70%	10
MED ARBOR			10	100%	10
MEDICAL LABORATORY DIAGNOSTICS			10	100%	10
GENESIS LABORATORY MANAGEMENT			10	100%	10
NEW JERSEY DEPARTMENT OF HEALTH COMMUNICABLE DISEASE SERVICE		3	7	70%	10
EMERGENCY PHYSICIANS MEDICAL CENTER			10	100%	10
LABCORP - MIAMI		4	6	60%	10
SELECT REFERENCE LABORATORIES, LLC			10	100%	10
PARKWEST MEDICAL CENTER		9	1	10%	10
DIAGNOSTIC LABORATORY OF OKLAHOMA		10			10
LAKE BALDWIN CBOC		9	1	10%	10
BAPTIST CLAY			10	100%	10
NEW YORK STATE ELR - ROCHESTER GENERAL HOSPITAL LABORATORY		9	1	10%	10
BROWARD HEALTH CARE			10	100%	10
ESCAMBIA COMMUNITY CLINIC			10	100%	10
BAYCARE OUTREACH LABORATORY SERVICES		1	9	90%	10

COVID-19: testing by laboratory

Data through Jul 21, 2020 verified as of Jul 22, 2020 at 09:25 AM

Data in this report are provisional and subject to change.

The numbers in the table below represent the number for whom test results were received by the Department of Health. A person can be tested by more than one laboratory and can have both positive and negative results. **Therefore, the sum of the numbers in each column will be larger than the total number of people tested.**

Reporting lab	Inconclusive	Negative	Positive	Percent positive	Total
NIGHT LITE PEDIATRICS URGENT CARE			9	100%	9
CAYUGA MEDICAL CENTER AT ITHACA		8	1	11%	9
CLARITY LAB SOLUTIONS		3	6	67%	9
ST. JOSEPH HOSPITAL LAB			9	100%	9
MOLECULAR TESTING LABS			9	100%	9
UVMC MICROBIOLOGY		9			9
UPMC CHAUTAUQUA AT WCA LABORATORY		9			9
MICHIGAN DEPARTMENT OF HEALTH AND HUMAN SERVICES			9	100%	9
QUEST INFECTIOUS DISEASE	1	4	4	44%	9
CORE LABORATORY		1	8	89%	9
VENICE REGIONAL MEDICAL CENTER			9	100%	9
HEALTH FIRST-VIERA HOSPITAL			9	100%	9
HEALTHLINK DIAGNOSTIC LABORATORIES		1	8	89%	9
WESTPAC LABS			9	100%	9
SMA LAB		3	6	67%	9
NORTH OKALOOSA MEDICAL CENTER			8	100%	8
DEVANSH LAB WERKS INC		6	2	25%	8
CENTRA CARE - SAND LAKE			8	100%	8
BIO REFERNCE LABORATORIES		3	5	63%	8
DOCTOR'S IN HOUSE LAB			8	100%	8
CBS LABORATORY		1	7	88%	8
NORTH CAROLINA DEPARTMENT OF HEALTH & HUMAN SERVICES			8	100%	8
ST JOSEPHS HOSPITAL			8	100%	8
GENESIS DIAGNOSTICS			8	100%	8
CONSOLIDATED LAB SERVICES		8			8
SPORTS DRUG TESTING LABORATORY			8	100%	8
WUESTHOFF MEDICAL CENTER-MELBOURNE			8	100%	8
JACKSON NORTH MEDICAL CENTER		1	7	88%	8
THE COMMONWEALTH OF MASSACHUSETTS			8	100%	8
EAST ALABAMA MEDICAL CENTER LABORATORY		6	2	25%	8
MINUTE CLINIC INCORPORATE		7	1	13%	8
ST MARY'S MEDICAL CENTER		1	7	88%	8
GENEUS DIAGNOSTICS			8	100%	8
MAYO CLINIC DEPT OF LAB MED PATHOLOGY			8	100%	8
UMHC/SYLVESTER AT KENDALL		1	7	88%	8
ST JOSEPH'S HEALTHLINE		1	7	88%	8
ORMOND BEACH CENTRA CARE			7	100%	7
RDX BIOSCIENCE,			7	100%	7
FLORIDA DEPARTMENT OF HEALTH IN LAKE COUNTY		3	4	57%	7
VENICE REGIONAL MEDICAL LAB SERVICES			7	100%	7
NEW YORK STATE ELR - SARATOGA HOSPITAL LABORATORY		7			7
NEW YORK STATE ELR - ST PETER'S BENDER LABORATORY		7			7
LONGLEAF DIAGNOSTIC LABORATORIES		2	5	71%	7
NEW YORK STATE ELR - CATHOLIC HEALTH SERVICES REGIONAL LABORATORY		5	2	29%	7
DYNAMIC DNA LAB			7	100%	7
NEW YORK STATE ELR - ERIE COUNTY MEDICAL CTR CLINICAL LABS		7			7
NEW YORK STATE ELR - JAMES J PETERS VA MEDICAL CENTER		5	2	29%	7

COVID-19: testing by laboratory

Data through Jul 21, 2020 verified as of Jul 22, 2020 at 09:25 AM

Data in this report are provisional and subject to change.

The numbers in the table below represent the number for whom test results were received by the Department of Health. A person can be tested by more than one laboratory and can have both positive and negative results. **Therefore, the sum of the numbers in each column will be larger than the total number of people tested.**

Reporting lab	Inconclusive	Negative	Positive	Percent positive	Total
AMERICAN HEALTH ASSOCIATES OF TAMPA			7	100%	7
ST CATHERINE OF SIENA HOSPITAL		7			7
MACDILL AFB HOSPITAL		1	6	86%	7
SYLVESTER AT PLANTATION LABORATORY		6	1	14%	7
CLINICAL PATHOLOGY LABORATORIES, INC.			7	100%	7
SOUTHEAST ALABAMA MEDICAL CENTER			7	100%	7
NO NAME		5	2	29%	7
SOUTHEAST FAMILY HEALTHCARE CENTER			7	100%	7
NORTH BAY HOSPITAL			7	100%	7
WATSON CLINIC LLP MAIN			7	100%	7
NORTHWELL HEALTH PLAINVIEW HOSPITAL LABORATORY		5	2	29%	7
BAYFRONT HEALTH SPRING HILL			7	100%	7
VAMC			7	100%	7
PRIDE DIAGNOSTICS		6			6
HUNTINGTON HOSPITAL LABORATORY		5	1	17%	6
WOLFSON CHILDREN'S HOSPITAL			6	100%	6
POARCH BANC CREEK INDIANS TRIBAL HEALTH DEPARTMENT			6	100%	6
MICHIGAN DEPARTMENT OF COMMUNITY HEALTH		1	5	83%	6
ST. JOSEPH'S HOSPITAL LAB			6	100%	6
SACRED HEART HEALTH SYSTEM			6	100%	6
PRATTVILLE BAPTIST HOSPITAL		5	1	17%	6
CONNECTICUT DEPARTMENT OF HEALTH		5	1	17%	6
CLEVELAND CLINIC			6	100%	6
LEE MEMORIAL LAB GULF COAST			6	100%	6
PENSACOLA PEDIATRICS			6	100%	6
TRUE HEALTH DIAGNOSTICS		1	5	83%	6
LEE COUNTY HEALTH DEPARTMENT		4	2	33%	6
ROCKLEDGE			6	100%	6
PATHOGENIUS LABORATORIES		2	4	67%	6
STATE LAB		1	5	83%	6
ST JOSEPH HOSPITAL		5	1	17%	6
HEALTH FIRST CAPE CANAVERAL HOSPITAL			6	100%	6
ST VINCENTS MEDICAL CENTER RIVERSIDE NURSING			6	100%	6
NEW YORK STATE ELR - JAMAICA HOSPITAL MEDICAL CENTER		6			6
DOCTOR'S MEMORIAL HOSPITAL			6	100%	6
PERSONALIZED GENETIC TESTING			6	100%	6
ADVENTHEALTH CENTRA CARE ORMOND BEACH			6	100%	6
NEW YORK STATE ELR - GOOD SAMARITAN HOSPITAL LABORATORY		6			6
NEW YORK STATE ELR - LOURDES HOSPITAL INC		6			6
ARCHBOLD MEMORIAL HOSPITAL/LAB		3	3	50%	6
BAY PINES VA		1	4	80%	5
MAGNOLIA DIAGNOSTIC			5	100%	5
UNIVERSITY HOSPITAL - STONY BROOK EASTERN		5			5
SOUTH SEMINOLE HOSPITAL		1	4	80%	5
ST ELIZABETH MEDICAL CENTER LABORATORY		5			5
NEW YORK STATE ELR - BRONX LEBANON HOSPITAL-MEDICAL CENTER		4	1	20%	5
Diatherix Laboratories, LLC		1	4	80%	5

COVID-19: testing by laboratory

Data through Jul 21, 2020 verified as of Jul 22, 2020 at 09:25 AM

Data in this report are provisional and subject to change.

The numbers in the table below represent the number for whom test results were received by the Department of Health. A person can be tested by more than one laboratory and can have both positive and negative results. **Therefore, the sum of the numbers in each column will be larger than the total number of people tested.**

Reporting lab	Inconclusive	Negative	Positive	Percent positive	Total
MONTEFIORE NEW ROCHELLE HOSPITAL		5			5
BIOTECH			5	100%	5
FRANCES WARDE MEDICAL LABORATORY		2	3	60%	5
NEW YORK STATE ELR - HUDSON VALLEY HOSPITAL CENTER LABORATORY		4	1	20%	5
UPMC HEALTH SYSTEM		4	1	20%	5
DOH JACKSONVILLE CENTRAL LABORATORY		3	2	40%	5
AEL KNOXVILLE			5	100%	5
CANTON-POTSDAM HOSPITAL LABORATORY		5			5
BOCA RATON REGIONAL HOSPITAL LAB			5	100%	5
SPECIALITY LABORATORIES, INC		4	1	20%	5
NEW YORK STATE ELR - VASSAR BROTHERS MEDICAL CENTER LABORATORY		5			5
NEW YORK PRESBYTERIAN - ALLEN HOSPITAL		5			5
FLOWERS HOSPITAL		1	4	80%	5
THE VILLAGES CLINICAL LAB		4	1	20%	5
BOCA BIOLISTICS REFERENCE LABORATORY			5	100%	5
CHILDREN'S HOSPITAL OF PHILADELPHIA		5			5
BROWARD COUNTY HEALTH DEPT.			5	100%	5
PROMEDICA LABORATORIES		5			5
SHELBY COUNTY HEALTH CARE CORPORATION		3	2	40%	5
LABCORP BURLINGTON CYTO		4	1	20%	5
NEW YORK STATE ELR - LABORATORY ALLIANCE OF CENTRAL NEW		5			5
PALM BEACH PATHOLOGY		4	1	20%	5
TAMIAMI LAB MILLENNIUM			5	100%	5
ARNOT OGDEN MEDICAL CENTER LABORATORY		5			5
TYNDALL AFB			5	100%	5
ST ANTHONY NORTH			5	100%	5
JFK MEDICAL CENTER NORTH LAB			5	100%	5
ST VINCENT'S EAST LABORATORY		5			5
XRL SXF REF LAB		5			5
THOMAS JEFFERSON UNIVERSITY HOSPITAL		4			4
BAYONET POINT MEDICAL CENTER			4	100%	4
NORTHWEST FLORIDA COMMUNITY HOSPITAL		1	3	75%	4
LEHIGH VALLEY HOSPITAL		3	1	25%	4
COMMUNITY HEALTH OF SOUTH FLORIDA			4	100%	4
NEW YORK STATE ELR - BROOKLYN HOSPITAL CENTER DOWNTOWN CAMPUS		4			4
MISSOURI DEPARTMENT OF HEALTH AND SENIOR SERVICES			4	100%	4
MAYO CLINIC LABS - ROCHESTER SUPERIOR DRIVE			4	100%	4
MINUTECLINIC DIAGNOSTIC OF RHODE ISLAND, LLC #729		4			4
MEDLOGIC, LLC		1	3	75%	4
DTR LABS		3	1	25%	4
BAYCARE LABORATORIES			4	100%	4
LAB CORP OF AMERICA		1	3	75%	4
CREATIVE TESTING SOLUTIONS			4	100%	4
NEW YORK STATE ELR - SOUTHSIDE HOSPITAL NORTHWELL HEALTH LABORATORY		3	1	25%	4
DCH REGIONAL MEDICAL CENTER LABORATORY		4			4
LAKELAND REGIONAL HEALTH			4	100%	4
MERCY HOSPITAL MIAMI LAB			4	100%	4

COVID-19: testing by laboratory

Data through Jul 21, 2020 verified as of Jul 22, 2020 at 09:25 AM

Data in this report are provisional and subject to change.

The numbers in the table below represent the number for whom test results were received by the Department of Health. A person can be tested by more than one laboratory and can have both positive and negative results. **Therefore, the sum of the numbers in each column will be larger than the total number of people tested.**

Reporting lab	Inconclusive	Negative	Positive	Percent positive	Total
LINCOLN MEDICAL AND MENTAL HEALTH CENTER		4			4
FINLAY C. LABORATORY		3	1	25%	4
PECONIC BAY MEDICAL CENTER LABORATORY		3	1	25%	4
SOUTHWESTERN REGIONAL MEDICAL CENTER - TULSA		4			4
OKLAHOMA STATE UNIVERSITY DIAGNOSTIC LAB			4	100%	4
PEDIATRIC HEALTH CARE ALLIANCE			4	100%	4
TRUGENX			4	100%	4
THE CENTER FOR URGENT CARE		3	1	25%	4
QUEST DIAGNOSTICS- MELBOURNE			4	100%	4
EXPRESS TESTING-ONE			4	100%	4
SUNCOAST COMMUNITY HEALTH CENTERS PEDIATRICS			4	100%	4
INTERMARKET FACILITY			4	100%	4
WUESTHOFF MEMORIAL HOSPITAL			4	100%	4
COLORADO DEPARTMENT OF PUBLIC HEALTH AND ENVIRONMENT			4	100%	4
BOND CLINIC			4	100%	4
BROOKWOOD BAPTIST MEDICAL CENTER		4			4
DAVITA LABORATORY		4			4
COVENIENT CARE MEDICAL CLINIC			4	100%	4
BIOFIRE			4	100%	4
LABCORP - NAPLES			4	100%	4
AMELIA MEDICAL CARE			4	100%	4
PRECISION LABS LLC		1	3	75%	4
STATEN ISLAND UNIVERSITY HOSPITAL-POUCH		4			4
TIMBER RIDGE LABORATORY			3	100%	3
NEW YORK STATE ELR - NORTH CENTRAL BRONX HOSP		3			3
WINTER HAVEN HOSPITAL			3	100%	3
QUEST DIAGNOSTICS-N ST PETERSBURG-5TH			3	100%	3
WAKEMED		1	2	67%	3
UNKNOWN LAB			3	100%	3
ST LUKES HOSPITAL LABORATORY		2	1	33%	3
NICHOLS INSTITUTE QUEST DIAGNOSTICS		2	1	33%	3
TAMPA GENERAL HOSPITAL LABORATORY			3	100%	3
STATEN ISLAND UNIVERSITY HOSPITAL		3			3
NEW YORK STATE ELR - JACOBI MEDICAL CENTER		3			3
VIRTUA VOORHEES HOSPITAL		3			3
MHHS All Lab Subsection		3			3
NEW YORK STATE ELR - ORANGE REGIONAL MEDICAL CENTER LABORATORY		3			3
QUEST DIAGNOSTIC			3	100%	3
VA OUTPATIENT			3	100%	3
METHODIST MEDICAL CENTER		2	1	33%	3
PUBLIC HEALTH LAB		3			3
PALMS WEST HOSPITAL			3	100%	3
NEW YORK STATE ELR - SAMARITAN HOSPITAL LABORATORY		3			3
PENNSYLVANIA DEPARTMENT OF HEALTH BUREAU OF LABORATORIES			3	100%	3
VIRGINIA DIVISION OF CONSOLIDATED LABORATORIES			3	100%	3
ABBOTT			3	100%	3
SAMARITAN MEDICAL CENTER		3			3

COVID-19: testing by laboratory

Data through Jul 21, 2020 verified as of Jul 22, 2020 at 09:25 AM

Data in this report are provisional and subject to change.

The numbers in the table below represent the number for whom test results were received by the Department of Health. A person can be tested by more than one laboratory and can have both positive and negative results. **Therefore, the sum of the numbers in each column will be larger than the total number of people tested.**

Reporting lab	Inconclusive	Negative	Positive	Percent positive	Total
BRANCH MEDICAL CLINIC			3	100%	3
DOH-TAMPA BRANCH LABORATORY (MLK BLVD)			3	100%	3
ASCENSION ST. VINCENT'S PRIMARY CARE			3	100%	3
OPTUM LABS LLC			3	100%	3
PINELLAS COUNTY HEALTH DEPARTMENT		2	1	33%	3
INDIAN RIVER CHD VERO BEACH		2	1	33%	3
FLORIDA CLINICAL LAB			3	100%	3
BAYCARE OUTREACH LABORATORY HOSPITAL			3	100%	3
MAYO MEDICAL LABORATORIES		2	1	33%	3
FISHERMEN'S HOSPITAL			3	100%	3
LABORATORY OF FLORIDA			3	100%	3
FAMILY HEALTH CENTERS OF SWF LABS			3	100%	3
LAKE CITY VETERANS HOSPITAL			3	100%	3
GENUS DIAGNOSTICS			3	100%	3
PRECISION HEALTH SOLUTIONS LAB			3	100%	3
JOE DIMAGGIO CHILDREN'S HOSPITAL		1	2	67%	3
FLORIDA WOMAN CARE LABORATORY			3	100%	3
ILLINOIS DEPARTMENT OF PUBLIC HEALTH			3	100%	3
MOLECULAR DIAGNOSTICS			3	100%	3
LEE MEMORIAL HEALTH PARK LAB			3	100%	3
LABCORP DIAGNOSTICS-MIAMI		2	1	33%	3
FLORIDA MEDICAL CLINIC			3	100%	3
Cleveland Clinic Laboratories		1	2	67%	3
NEWYORK-PRESBYTERIAN/ LAWRENCE HOSPITAL LABORATORY		3			3
NORTH BROWARD HOSPITAL DISTRICT HEALTHCARE FOR THE HOMELESS			3	100%	3
LAKE WALES MEDICAL CENTER INC			3	100%	3
KEY WEST URGENT CARE, INC		3			3
ACH			3	100%	3
CLINICORE			3	100%	3
AVELLINO LAB USA INC		3			3
HEALTHMARK REGIONAL HOSPITAL LAB		1	2	67%	3
JACKSON SOUTH COMMUNITY HOSPITAL LAB			3	100%	3
BARONESS ERLANGER HOSPITAL		3			3
SELECT LABORATORIES MARION COUNTY, LLC.			3	100%	3
BEAUMONT LABORATORY			3	100%	3
BAPTIST MEDICAL CENTER EAST		2	1	33%	3
MARINER'S HOSPITAL			3	100%	3
CENTRAL FLORIDA HEALTH CARE INC			3	100%	3
GULF COAST MEDICAL GROUP			3	100%	3
MONTEFIORE ST LUKE'S CORNWALL HOSPITAL		2	1	33%	3
EMERGENCY MEDICAL CENTER			3	100%	3
BAY CARE			2	100%	2
WALGREENS #5317		2			2
X-GENE MOLECULAR LABS			2	100%	2
LABCORP RARITAN		2			2
IOWA DEPARTMENT OF PUBLIC HEALTH			2	100%	2
VIRTUA MEMORIAL HOSPITAL BURLINGTON COUNTY			2	100%	2

COVID-19: testing by laboratory

Data through Jul 21, 2020 verified as of Jul 22, 2020 at 09:25 AM

Data in this report are provisional and subject to change.

The numbers in the table below represent the number for whom test results were received by the Department of Health. A person can be tested by more than one laboratory and can have both positive and negative results. **Therefore, the sum of the numbers in each column will be larger than the total number of people tested.**

Reporting lab	Inconclusive	Negative	Positive	Percent positive	Total
CELERION			2	100%	2
NEW YORK STATE DEPARTMENT OF HEALTH		1	1	50%	2
URGENT CARE TCMA			2	100%	2
BIRMINGHAM VAMC		1	1	50%	2
NEW YORK STATE ELR - AUBURN COMMUNITY HOSPITAL		2			2
PPD			2	100%	2
ALTRU DIAGNOSTICS INC			2	100%	2
GEORGIA DEPARTMENT OF PUBLIC HEALTH			2	100%	2
CLINICAL PATHOLOGY LABS		1	1	50%	2
WOODHULL MEDICAL AND MENTAL HEALTH CTR		2			2
NIGHT LITE PEDIATRICS WINTER GARDEN		2			2
JACKSON LABORATORY OF GENOMIC MEDICINE		2			2
CONNECTDX			2	100%	2
AMERICAN FAMILY CARE- ORANGE BEACH			2	100%	2
UNIVERSITY HOSPITAL			2	100%	2
BFT LAB			2	100%	2
FLORIDA HOSPITAL			2	100%	2
AHSE ROP		2			2
UC CORAL GABLES			2	100%	2
SOUTH GEORGIA MEDICAL CENTER			2	100%	2
UNIVERSITY HOSPITAL OF BROOKLYN		2			2
MEMORIAL SLOAN KETTERING CANCER CENTER		1	1	50%	2
PREMIER LABORATORY SERVICES, LLC			2	100%	2
GALEN BAYLOR EXTENSION		2			2
IRL MARKET LAB ALACHUA		1	1	50%	2
Covance Central Laboratory			2	100%	2
DEACONESS HOSPITAL			2	100%	2
AMEERAH LABS			2	100%	2
ALABAMA DEPARTMENT OF PUBLIC HEALTH			2	100%	2
BIO-TECH CLINICAL LABORATORIES			2	100%	2
ST. MARYS MEDICAL CENTER			2	100%	2
ST. JOSEPH REGIONAL MEDICAL CENTER			2	100%	2
ADVANCED MEDICAL CARE			2	100%	2
FLORIDA CLINICAL LABORATORY INC			2	100%	2
BETH ISRAEL DEACONESS MEDICAL CENTER			2	100%	2
LEEESBURG REGIONAL MEDICAL CENTER		1	1	50%	2
MAILBOX DIAGNOSTICS		1	1	50%	2
SIGNATURE CARE PFLUGERVILLE			2	100%	2
MAYO			2	100%	2
DORAL URGENT CARE			2	100%	2
DALE MEDICAL CENTER		2			2
LABCORP - STUART		1	1	50%	2
NORTH FLORIDA PEDIATRICS-LAKE CITY			2	100%	2
MARSHALL MEDICAL CENTER SOUTH LAB		2			2
LAWTON CHILES HEALTH CENTER			2	100%	2
UNIVERSITY OF MIAMI			2	100%	2
JOHNSON CITY MEDICAL CENTER		1	1	50%	2

COVID-19: testing by laboratory

Data through Jul 21, 2020 verified as of Jul 22, 2020 at 09:25 AM

Data in this report are provisional and subject to change.

The numbers in the table below represent the number for whom test results were received by the Department of Health. A person can be tested by more than one laboratory and can have both positive and negative results. **Therefore, the sum of the numbers in each column will be larger than the total number of people tested.**

Reporting lab	Inconclusive	Negative	Positive	Percent positive	Total
CENTRA CARE HUNTER'S CREEK			2	100%	2
HIGHLANDS MEDICAL CENTER		2			2
CALHOUN LIBERTY HOSPITAL			2	100%	2
ADVENT HEALTH SEBRING			2	100%	2
FLORIDA DEPARTMENT OF HEALTH IN HILLSBOROUGH COUNTY			2	100%	2
NORTH FLORIDA/SOUTH GEORGA VETERANS HEALTH SYSTEM			2	100%	2
OKLAHOMA STATE DEPARTMENT OF HEALTH-PUBLIC HEALTH LABORATORY			2	100%	2
GUTHRIE MEDICAL GROUP LABORATORIES		2			2
SARASOTA MEMORIAL MEDICAL URGENT CARE CENTER			2	100%	2
SCDHEC BUREAU OF LABORATORIES			2	100%	2
LABCORP - OHIO			2	100%	2
KETTERING HEALTH			2	100%	2
ST PETERSBURG PEDIATRICS-EAST BAY			2	100%	2
GEISINGER MEDICAL CENTER		2			2
INTERNAL MEDICINE ASSOCIATES-DUNELLON			2	100%	2
HOME ACCESS HEALTH			2	100%	2
COLLIER COUNTY HEALTH DEPT.			2	100%	2
Cleveland Clinic Weston			2	100%	2
LABCORP PHOENIX			2	100%	2
FCHC (OB)-DARWIN SQUARE CTR.			2	100%	2
OMNI			2	100%	2
AMMON LABS			2	100%	2
BAYFRONT HEALTH PUNTA GORDA			2	100%	2
NOVANT HEALTH INPATIENT CARE			2	100%	2
NORTHERN DUTCHESS HOSPITAL LABORATORY		2			2
PREMIER MEDICAL LABORATORY			2	100%	2
COASTAL LABORATORIES			2	100%	2
OHIO DEPARTMENT OF HEALTH LABORATORY		2			2
SHELBY BAPTIST MEDICAL CENTER			2	100%	2
SSM HEALTH ST LOUIS MICROBIOLOGY LABORATORY		1	1	50%	2
ATLANTIS URGENT CARE			2	100%	2
ACHS		2			2
QUEENS HOSPITAL CENTER		2			2
CORAL GABLES HOSPITAL			2	100%	2
ERIE COUNTY MEDICAL CTR CLINICAL LABS		2			2
QUEST DIAGNOSTICS INCORPORATED			2	100%	2
NEW HAMPSHIRE DEPARTMENT OF HEALTH AND HUMAN SERVICES		1	1	50%	2
NEW HAMPSHIRE PUBLIC HEALTH LABORATORIES		2			2
CONEMAUGH MEMORIAL MEDICAL CENTER		2			2
TREASURE COAST COMMUNITY HEALTH			2	100%	2
NAPHCARE, INC.			2	100%	2
MONTANA PUBLIC HEALTH LAB			2	100%	2
FLORIDA HEALTH CARE PLANS			2	100%	2
JOHN D. ARCHBOLD MEM. HOSPITAL			2	100%	2
NEW YORK STATE ELR - NEW YORK CITY DEPARTMENT OF HEALTH & MENTAL		2			2
KEY PRIMARY CASE			2	100%	2
OHIO STATE UNIVERSITY WEXNER MEDICAL CENTER			2	100%	2

COVID-19: testing by laboratory

Data through Jul 21, 2020 verified as of Jul 22, 2020 at 09:25 AM

Data in this report are provisional and subject to change.

The numbers in the table below represent the number for whom test results were received by the Department of Health. A person can be tested by more than one laboratory and can have both positive and negative results. **Therefore, the sum of the numbers in each column will be larger than the total number of people tested.**

Reporting lab	Inconclusive	Negative	Positive	Percent positive	Total
NEW YORK STATE ELR - LONG ISLAND JEWISH VALLEY STREAM		2			2
KEYS MEDICAL GROUP			2	100%	2
STATEN ISLAND UNIVERSITY HOSPITAL SEGUINE AVE		2			2
COLORADO DEPARTMENT OF HEALTH LABORATORY SERVICES DIVISION			1	100%	1
KANSAS DEPARTMENT OF HEALTH			1	100%	1
LAB CORP PHOENIX			1	100%	1
COMPUNET CLINICAL LAB			1	100%	1
WESLEY CHAPEL INTERNAL MEDICINE AND PEDIATRICS			1	100%	1
UC SAN DIEGO HEALTH			1	100%	1
SENTARA NORFOLK GENERAL HOSPITAL CENTRAL LAB			1	100%	1
HARTFORD HOSPITAL ANCILLARY LAB		1			1
SANFORD REGIONAL HOSPITAL WORTHINGTON		1			1
TRUMAN MEDICAL CENTER - HOSPITAL HILL			1	100%	1
DOCS URGENT CARE			1	100%	1
VERMONT DEPARTMENT OF HEALTH LABORATORY		1			1
VA HOSPITAL			1	100%	1
SUNY AT STONY BROOK			1	100%	1
UNITED CLINICAL LABORATORIES			1	100%	1
TIMPANOGOS REGIONAL HOSPITAL			1	100%	1
DALLAS MEDICAL CENTER			1	100%	1
TAMIAMI LAB MILLENIUM			1	100%	1
STANLY REGIONAL MEDICAL CENTER			1	100%	1
CQUENTIA NGS, LLC			1	100%	1
FLORIDA DEPARTMENT OF HEALTH IN MIAMI DADE COUNTY			1	100%	1
TAMPA		1			1
ALLIANCE LABORATORY SERVICES			1	100%	1
AFFILIATED LABORATORIES INC			1	100%	1
ADVENTIST HINSDALE HOSPITAL LABORATORY			1	100%	1
MARINA DEL REY HOSPITAL LAB			1	100%	1
WELLINGTON WEST 100176			1	100%	1
WEST PACIFIC MEDICAL LABORATORY			1	100%	1
MARYLAND DEPARTMENT OF HEALTH AND MENTAL HYGIENE			1	100%	1
NORTH NAPLES HOSPITAL RESPIRATORY THERAPY DEPARTMENT			1	100%	1
BIODORON LABORATORIES			1	100%	1
MEMORIAL HEALTH UNIVERSITY MEDICAL CENTER			1	100%	1
ONslow MEMORIAL HOSPITAL LABORATORY		1			1
MD NOW URGENT CARE CENTER INC.			1	100%	1
CHATSWORTH ASSISTED LIVING COMMUNITY AT PGA NATIONAL			1	100%	1
LEGACY LABORATORY SERVICES			1	100%	1
JOHNS HOPKINS MEDICAL LABORATORIES			1	100%	1
LABCORP - HOLLYWOOD			1	100%	1
US LABORATORIES			1	100%	1
LABCORP-PORT ST.LUCIE		1			1
JOHN HOPKINS MEDICAL LABORATORIES		1			1
ST JOSEPHS CHILDRENS HOSPITAL OUTREACH			1	100%	1
BARDMOOR LABORATORY			1	100%	1
WEST VIRGINIA UNIVERSITY HOSPITALS			1	100%	1

COVID-19: testing by laboratory

Data through Jul 21, 2020 verified as of Jul 22, 2020 at 09:25 AM

Data in this report are provisional and subject to change.

The numbers in the table below represent the number for whom test results were received by the Department of Health. A person can be tested by more than one laboratory and can have both positive and negative results. **Therefore, the sum of the numbers in each column will be larger than the total number of people tested.**

Reporting lab	Inconclusive	Negative	Positive	Percent positive	Total
WASHINGTON STATE DEPARTMENT OF HEALTH PUBLIC HEALTH LABORATORIES			1	100%	1
LABCORP SOUTH CHARLESTON			1	100%	1
VRL EUROFINIS			1	100%	1
LABCORP LAFAYETTE		1			1
AIM LABORATORIES			1	100%	1
CAROLINAS HEALTHCARE SYSTEM LAB			1	100%	1
BAPTIST ER TOWN CTR			1	100%	1
UNIVERSITY OF KANSAS MEDICAL CENTER			1	100%	1
FLORIDA HOSPITAL KISSIMMEE			1	100%	1
CBC LAB			1	100%	1
UNK			1	100%	1
HARLEM HOSPITAL CENTER		1			1
HANCOCK REGIONAL HOSPITAL		1			1
HEART OF FLORIDA HMA			1	100%	1
NEW YORK STATE ELR - COLUMBIA MEMORIAL HOSPITAL LABORATORY		1			1
UNIVERSITY OF FLORIDA			1	100%	1
AZALEA HEALTH			1	100%	1
UAB			1	100%	1
PARKWAY REGIONAL MEDICAL CENTER LAB			1	100%	1
Viracor Eurofins			1	100%	1
VIDANT MEDICAL CENTER			1	100%	1
KETTERING MEDICAL CENTER			1	100%	1
WILMINGTON VA MEDICAL CENTER			1	100%	1
KENTUCKY CABINET FOR HEALTH AND FAMILY SERVICES			1	100%	1
VITAE DIAGNOSTICS			1	100%	1
JEFFERSON COUNTY HEALTH DEPARTMENT-MONTICELLO		1			1
OHIO DEPARTMENT OF HEALTH			1	100%	1
UT MEMPHIS UNIVERSITY HEALTH SERVICES			1	100%	1
DSI LABORATORIES-NAPLES-7TH			1	100%	1
EDGAR PRICE FAMILY & CHILDREN HEALTHCARE CENTER			1	100%	1
LABCORP - LADY LAKE			1	100%	1
VALLEY HOSPITAL MEDICAL CENTER		1			1
CLEVELAND CLINIC OHIO LABORATORIES			1	100%	1
DHEC - S.C PUBLIC HEALTH LAB			1	100%	1
VA GREATER LOS ANGELES HEALTH CARE SYSTEM			1	100%	1
HEALTH NETWORK LABORATORIES		1			1
BMC/JACSONVILLE		1			1
CENTRA CARE - LAKE NONA			1	100%	1
VIGILINT HEALTHCARE		1			1
ST. LUCIE COUNTY HEALTH DEPARTMENT		1			1
ST. LUKE'S HOSPITAL - BETHLEHEM CAMPUS		1			1
EXCEL URGENT CARE OF NJ			1	100%	1
DUKE HEALTH REGIONAL HOSPITAL			1	100%	1
FALMOUTH BY THE SEA			1	100%	1
URGENT CARE WEST CLINIC			1	100%	1
SPARROW CENTRAL LAB			1	100%	1
THOMAS LANGLEY			1	100%	1

COVID-19: testing by laboratory

Data through Jul 21, 2020 verified as of Jul 22, 2020 at 09:25 AM

Data in this report are provisional and subject to change.

The numbers in the table below represent the number for whom test results were received by the Department of Health. A person can be tested by more than one laboratory and can have both positive and negative results. **Therefore, the sum of the numbers in each column will be larger than the total number of people tested.**

Reporting lab	Inconclusive	Negative	Positive	Percent positive	Total
THE UNIVERSITY OF VERMONT MEDICAL CENTER		1			1
JRS LABORATORY			1	100%	1
HIGHLANDS CLINICAL LABORATORY			1	100%	1
SACRED HEART MEDICAL GROUP			1	100%	1
UF KANAPAHA LAB BEAKER		1			1
TEN HEALTHCARE			1	100%	1
ST. JOSEPH'S HOSPITAL NORTH			1	100%	1
BERKSHIRE MEDICAL CENTER			1	100%	1
WILLIAM A HINTON STATE LABORATORY INSTITUTE			1	100%	1
AMD			1	100%	1
UNIVERSITY LAB			1	100%	1
DOCTOR'S WALK-IN CLINIC / QUEST DIAGNOSTICS			1	100%	1
ACCESS HEALTH CARE PHYSICIANS			1	100%	1
LAKEVIEW REGIONAL HOSPITAL			1	100%	1
YORK HOSPITAL - LABORATORY			1	100%	1
MANATEE PEDIATRICS			1	100%	1
MEDSTAR HARBOR HOSPITAL			1	100%	1
MEDICAL CLINIC OF HOUSTON			1	100%	1
THE CHILDREN'S HOSPITAL OF PHILADELPHIA		1			1
SUNY UPSTATE MEDICAL UNIVERSITY			1	100%	1
UNKNOWN - MI			1	100%	1
WOLFSON (USE BAPTIST)			1	100%	1
UW HOSPITAL AND CLINICS			1	100%	1
MONTANA DEPARTMENT OF PUBLIC HEALTH & HUMAN SERVICES			1	100%	1
Mt Sinai Aventura			1	100%	1
WARD MEMORIAL HOSPITAL		1			1
UK HEALTHCARE			1	100%	1
MUNSON MEDICAL CENTER			1	100%	1
MINUTECLINIC DIAGNOSTIC			1	100%	1
MEMORIAL HERMANN CONSOLIDATED LABORATORY SERVICES			1	100%	1
MONROE COUNTY HOSPITAL		1			1
NADAL PEDIATRICS - VICTORIA STREET (3385)			1	100%	1
MONTEFIORE NYACK HOSPITAL AFFILIATED LABORATORY		1			1
SPRING HILL REGIONAL HOSPITAL			1	100%	1
SHANDS AT LAKE SHORE LAB			1	100%	1
MHS LAB		1			1
SCIENCE CARE			1	100%	1
NEW YORK STATE ELR - MONTEFIORE MEDICAL CENTER LABORATORIES - WEILER			1	100%	1
RIVERVIEW REGIONAL MEDICAL CENTER		1			1
INDIAN RIVER CLINICAL LABORATORY, INC.		1			1
TALLAHASSEE MEMORIAL HOSPITAL/MICROBIOLOGY LAB			1	100%	1
INTERMOUNTAIN MEDICAL CENTER			1	100%	1
Lourdes Hospital			1	100%	1
LABCORP-CRYSTAL RIVER			1	100%	1
ONEIDA HEALTHCARE CENTER		1			1
OHIO STATE UNIVERSITY MEDICAL CENTER			1	100%	1
SCIONLAB SERVICES LLC			1	100%	1

COVID-19: testing by laboratory

Data through Jul 21, 2020 verified as of Jul 22, 2020 at 09:25 AM

Data in this report are provisional and subject to change.

The numbers in the table below represent the number for whom test results were received by the Department of Health. A person can be tested by more than one laboratory and can have both positive and negative results. **Therefore, the sum of the numbers in each column will be larger than the total number of people tested.**

Reporting lab	Inconclusive	Negative	Positive	Percent positive	Total
SONIC REFERENCE LABORATORY			1	100%	1
SMITH KLINE			1	100%	1
QUEST ELR		1			1
NEW YORK STATE ELR - NEW YORK PRESBYTERIAN-LOWER MANHATTAN		1			1
NORTHSIDE HOSPITAL DULUTH			1	100%	1
PROGENESIS INC			1	100%	1
NORTHWEST FL COMM HOSP			1	100%	1
NORTH RIVER FAMILY HEALTH CENTER			1	100%	1
NORTSHORE UNIVERSITY HEALTHSYSTEM EVANSTON HOSPITAL LAB			1	100%	1
NORTH CAROLINA STATE LABORATORY OF PUBLIC HEALTH, SPECTRUM LAB NETWORK			1	100%	1
PEDIATRIC ASSOCIATES - JACKSONVILLE			1	100%	1
NOT GIVEN			1	100%	1
PERDIDO URGENT CARE			1	100%	1
NAVAL BRANCH MEDICAL CLINIC			1	100%	1
PEDIATRIC HEALTHCARE ALLIANCE			1	100%	1
NORTHERN WESTCHESTER HOSPITAL LABORATORY		1			1
NORTH BROWARD MEDICAL CENTER			1	100%	1
SANFORD SOUTH UNIVERSITY		1			1
REMISE OCCUPATIONAL HEALTH SOLUTIONS INC			1	100%	1
MIAMI CANCER INSTITUTE			1	100%	1
MEDICAL CENTER ENTERPRISE			1	100%	1
MEDONE URGENT CARE			1	100%	1
NEW YORK CITY DEPARTMENT OF HEALTH			1	100%	1
PHELPS HOSPITAL LABORATORY		1			1
QUEST DIAGNOSTIC INC TECHNICAL			1	100%	1
REGIONAL MEDICAL LABORATORY			1	100%	1
QUEST DIAGNOSTICS-OCALA-SE 3RD		1			1
PRISMA HEALTH TUOMEY LABORATORY			1	100%	1
ST. MARY MEDICAL CENTER		1			1
SOUTHEAST GEORGIA HEALTH SYSTEM			1	100%	1
ST FRANCIS			1	100%	1
ST CHARLES HOSPITAL LABORATORY		1			1
State Lab Unspecifd			1	100%	1
PRORENATA LABS			1	100%	1
UCLA HEALTHCARE CLINICAL LABS			1	100%	1
RIVIERA BEACH HEALTH CENTER LAB			1	100%	1
SKY RIDGE MEDICAL CENTER - MICRO			1	100%	1
ROBERT WOOD JOHNSON HOSPITAL			1	100%	1
LATE HOURS URGENT CARE			1	100%	1
LARKIN COMMUNITY HOSPITAL INC DBA CARDIOTROPIC		1			1
MAGNOLIA ADULT, LLC			1	100%	1
MIDMICHIGAN MEDICAL CENTER			1	100%	1
QUEST - HOUSTON LAB			1	100%	1
TEXAS DEPARTMENT OF STATE HEALTH SERVICES			1	100%	1
SOUTHWEST REGIONAL PCR LABORATORY			1	100%	1
THE HEART HOSPITAL BAYLOR PLANO			1	100%	1
REDITUS LABORATORIES			1	100%	1

COVID-19: testing by laboratory

Data through Jul 21, 2020 verified as of Jul 22, 2020 at 09:25 AM

Data in this report are provisional and subject to change.

The numbers in the table below represent the number for whom test results were received by the Department of Health. A person can be tested by more than one laboratory and can have both positive and negative results. **Therefore, the sum of the numbers in each column will be larger than the total number of people tested.**

Reporting lab	Inconclusive	Negative	Positive	Percent positive	Total
TIEHH BIOTERRORISM RESPONSE LAB			1	100%	1
HEALTH FIRST IBM-UX			1	100%	1
ST VINCENT'S CHILTON		1			1
BAYCARE MEDICAL GROUP			1	100%	1
BAYFRONT HEALTH PORT CHARLOTTE			1	100%	1
CELEBRATION HOSPITAL			1	100%	1
CALIFORNIA PUBLIC HEALTH LABORATORY			1	100%	1
ALVERNO CLINICAL LABORATORIES			1	100%	1
ALLIANCE LABS @LRMC			1	100%	1
ARKANSAS DEPARTMENT OF HEALTH			1	100%	1
TUFTS MEDICAL CENTER			1	100%	1
ARNOLD PALMER HOSPITAL LABORATORY			1	100%	1
FORT SANDERS REGIONAL LABORATORY		1			1
FLORIDA HOSPITAL ALTAMONTE			1	100%	1
HARDIN MEMORIAL HOSPITAL - HEARTLAND PATHOLOGY CONSULTANTS			1	100%	1
HOUSTON HEALTH DEPARTMENT - BUREAU OF LABORATORY SERVICES			1	100%	1
HOLY NAME MEDICAL CENTER		1			1
CFCH - FROSTPROOF			1	100%	1
CENTRA CARE - WATERFORD LAKES			1	100%	1
SHARP MEMORIAL HOSPITAL MICROBIOLOGY DEPT			1	100%	1
RICHMOND UNIVERSITY MEDICAL CENTER			1	100%	1
RIVERSIDE METHODIST HOSPITAL LAB			1	100%	1
MARION COUNTY HEALTH DEPARTMENT			1	100%	1
BLOOD SYSTEMS LABORATORIES			1	100%	1
NEW YORK STATE ELR - BELLEVUE HOSPITAL CENTER DEPARTMENT		1			1
BLOUNT MEMORIAL HOSPITAL		1			1
CATHOLIC HEALTH SYSTEM DEPT LABORATORY		1			1
NAVAL HOSPITAL OF JACKSONVILLE			1	100%	1
AMERICAN MEDICAL LABORATORIES			1	100%	1
AFC URGENT CARE			1	100%	1
BAYCARE ALLIANT HOSPITAL			1	100%	1
BAYCARE OUTREACH LAB			1	100%	1
NEW YORK STATE ELR - GLENS FALLS HOSPITAL DEPARTMENT OF PATHOLOGY		1			1
JOHNS HOPKINS MEDICAL LABS			1	100%	1
GIFFORD MEMORIAL HOSPITAL		1			1
LAKWOOD RANCH ER 24/7			1	100%	1
LEGACY LABORATORY			1	100%	1
MALABAR/ADVENT CENTRA CARE			1	100%	1
DELAWARE DIAGNOSTICS LABS			1	100%	1
CONEY ISLAND HOSPITAL		1			1
FLORIDA CLINICAL LABORATORY - BIOREFERENCE LABORATORIES			1	100%	1
FLORIDA DEPARTMENT OF HEALTH PALM BEACH COUNTY			1	100%	1
MID FLORIDA CLINICAL LABORATORY			1	100%	1
COMMONWEALTH OF MASSACHUSETTS			1	100%	1
CHARLOTTE CHD PORT CHARLOTTE		1			1
XPRESS WELLNESS URGENT CARE			1	100%	1
WELLNOW URGENT CARE		1			1

COVID-19: testing by laboratory

Data through Jul 21, 2020 verified as of Jul 22, 2020 at 09:25 AM

Data in this report are provisional and subject to change.

The numbers in the table below represent the number for whom test results were received by the Department of Health. A person can be tested by more than one laboratory and can have both positive and negative results. **Therefore, the sum of the numbers in each column will be larger than the total number of people tested.**

Reporting lab	Inconclusive	Negative	Positive	Percent positive	Total
DOCTORS CLINICAL LABORATORY, INC			1	100%	1
MISSOURI DEPARTMENT OF HEALTH AND SENIOR SERVICES - STATE PH LAB		1			1
MINUTECLINIC DIAGNOSTIC OF TEXAS, LLC		1			1
BAPTIST HEALTH MEDICAL CENTER			1	100%	1
BEAUMONT HOSPITAL, GROSSE POINTE			1	100%	1
BEAUFORT MEMORIAL			1	100%	1
UNITED HEALTHCARE			1	100%	1
UNIVERSITY OF MISSOURI HEALTH CARE			1	100%	1
TRINITAS REGIONAL MEDICAL CENTER			1	100%	1
TANNER MEDICAL CENTER EAST AL		1			1
GRAND VIEW HOSPITAL			1	100%	1
WATAUGA MEDICAL CENTER			1	100%	1
EXPRESS GENE MOLECULAR DIAGNOSTICS LABORATORY			1	100%	1
VIRACOR			1	100%	1
UTMB PATHOLOGY CLINICAL SERVICES LABORATORY			1	100%	1
GENETRAIT LABORATORIES			1	100%	1
LOYOLA UNIVERSITY MEDICAL CENTER LABORATORY			1	100%	1
PHYSICIANS STAT			1	100%	1
ACCESSLAB		1			1
PEACHEALTH LABORATORIES		1			1
BAY CARE LAB SERVICES/ST. ANTHONY'S HOSPITAL			1	100%	1
APS-SUMMIT CARE PHARMACY, LLC DBA OMNICARE		1			1
LABCORP - ORLANDO		1			1
INTERMOUNTAIN CENTRAL LAB			1	100%	1
LABCORP KANSAS CITY			1	100%	1
ACCESS HEALTH CARE			1	100%	1
PIEDMONT HOSPITAL LAB			1	100%	1
HELIX DIAGNOSTICS			1	100%	1
HAWAII DEPARTMENT OF HEALTH LAB			1	100%	1
LABCORP - LEESBURG			1	100%	1
LEESBURG FAMILY MEDICINE		1			1
LABCORP HOUSTON			1	100%	1
BOZEMAN HEALTH DEACONESS HOSPITAL		1			1
BAYCARE MEDICAL GROUP INC			1	100%	1
CAROMONT HEALTH			1	100%	1
ECLRS			1	100%	1
DICKERT			1	100%	1
Total	12,954	3,507,785	473,128	12%	3,993,867