

COVID-19: summary of persons being monitored, persons tested, and cases

Data through Jul 28, 2020 verified as of Jul 29, 2020 at 09:25 AM
Data in this report are provisional and subject to change.

Monitored persons: people the Florida Department of Health was notified of for possible monitoring because they are a contact of a case, traveled from China, or were identified by the Centers for Disease Control and Prevention (CDC) as a part of a airline/ship contact investigation	
Total reports	136,612
Total persons of high, medium, or unknown risk	132,933
High/medium/unknown risk still being monitored	14,107

Persons tested: includes PCR and antigen test results received by the Department of Health from the state public health laboratory (BPHL), as well as commercial and hospital laboratories	
Total tested	3,531,721
Positive	451,423
Negative	3,075,342
Inconclusive	4,956
Awaiting testing	3,220

Cases: people with positive PCR or antigen test result	
Total cases	451,423
Florida residents	446,251
Non-Florida residents	5,172
Type of testing	
Florida residents	446,251
Positive by BPHL/CDC	14,797
Positive by commercial/hospital lab	431,454
Non-Florida residents	5,172
Positive by BPHL/CDC	196
Positive by commercial/hospital lab	4,976
Characteristics	
Florida residents hospitalized	25,499
Florida resident deaths	6,333
Change in deaths since previous report	+216
Non-Florida resident deaths	124
Hospitalized counts include anyone who was hospitalized at some point during their illness. It does not reflect the number of people currently hospitalized.	
More information on deaths identified through death certificate data is available on the National Center for Health Statistics website at www.cdc.gov/nchs/nvss/vsrr/COVID19/index.htm .	
Risk factors for Florida residents	
Traveled	3,546
Contact with a known case	119,168
Traveled and contact with a known case	3,539
Neither	319,998
No travel and no contact	44,263
Travel is unknown	226,745
Contact is unknown	77,610
Contact is pending	190,857
Travel can be unknown and contact can be unknown or pending for the same case, these numbers will sum to more than the "neither" total.	

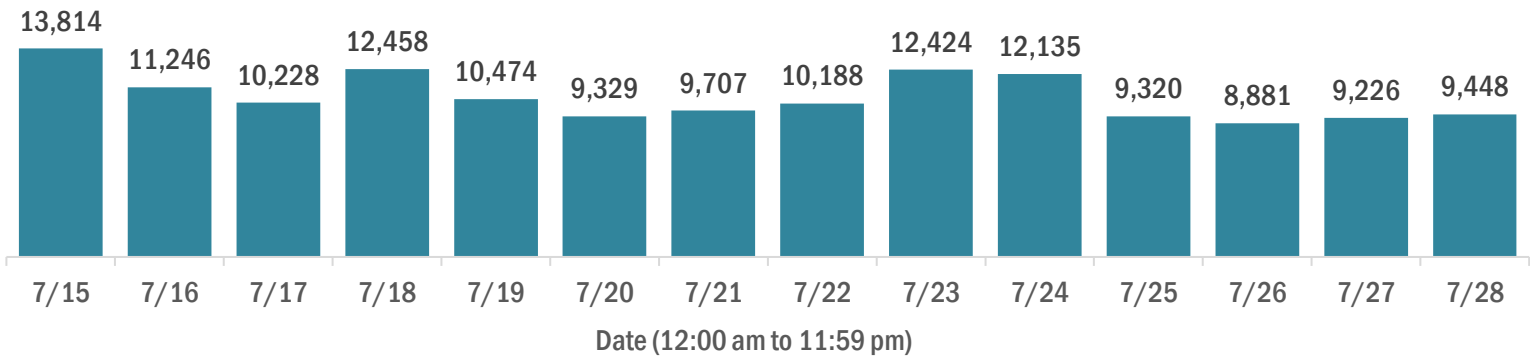
COVID-19: cases and laboratory testing over time

Data through Jul 28, 2020 verified as of Jul 29, 2020 at 09:25 AM

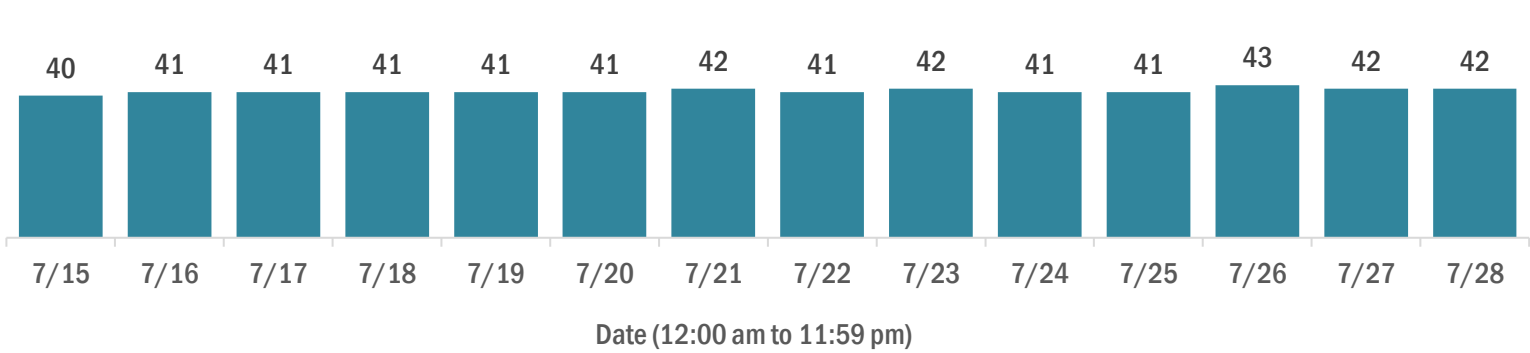
Data in this report are provisional and subject to change.

Cases in Florida residents per day for the past 2 weeks

Number of cases per day



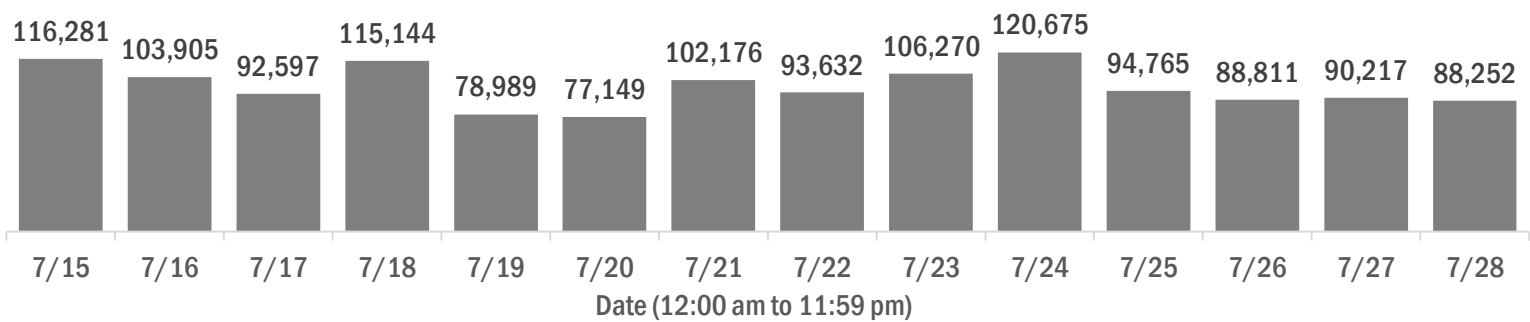
Median age of cases by day



Laboratory testing for Florida residents and non-Florida residents over the past 2 weeks

Number of people tested per day

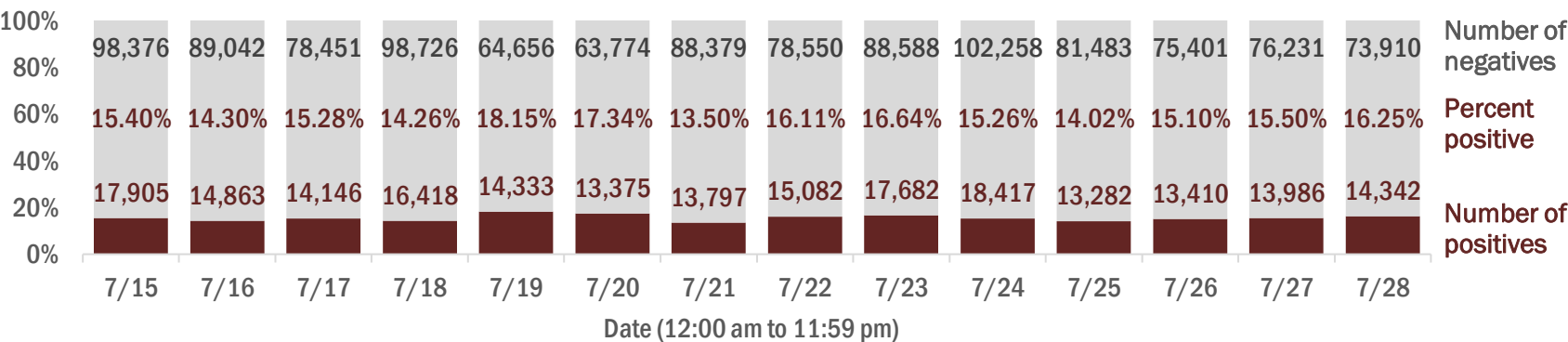
These counts include the number of people for whom the department received PCR or antigen laboratory results by day. People tested on multiple days will be included for each day a new result was received. A person is only counted once for each day they are tested, regardless of whether multiple specimens are tested or multiple results are received.



Number and percent of positive labs

The percent of positive results ranged from 13.50% to 18.15% over the past 2 weeks and was 16.25% yesterday.

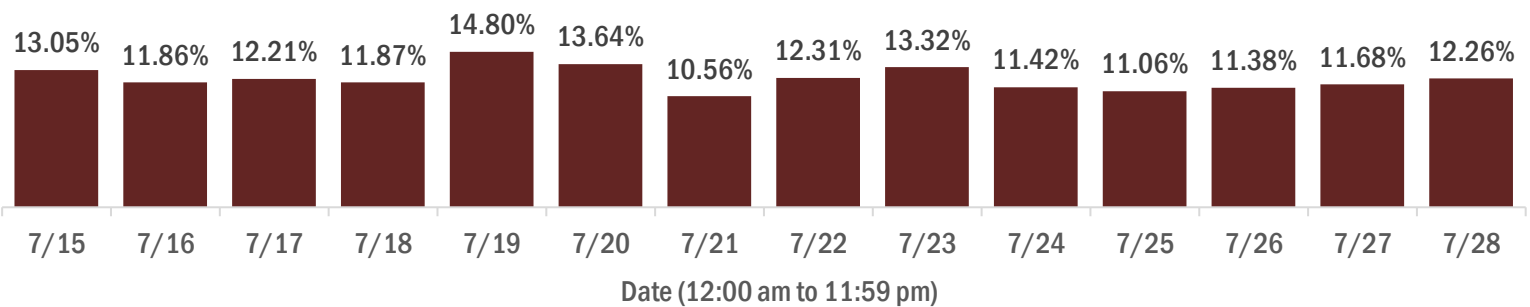
These counts include the number of people for whom the department received PCR or antigen laboratory results by day. People tested on multiple days will be included for each day a new result was received. A person is only counted once for each day they are tested, regardless of whether multiple specimens are tested or multiple results are received. If a person has a positive specimen and a negative specimen in the same day, only the positive result is counted.



Percent positivity for new cases

The percent of positive results ranged from 10.56% to 14.80% over the past 2 weeks and was 12.26% yesterday.

This percent is the number of people who test PCR- or antigen-positive for the first time divided by all the people tested that day, excluding people who have previously tested positive.



COVID-19: characteristics of 446,251 Florida resident cases

Data through Jul 28, 2020 verified as of Jul 29, 2020 at 09:25 AM

Data in this report are provisional and subject to change.

Age group	Cases		Hospitalizations		Deaths	
0-4 years	7,462	2%	140	1%	0	0%
5-14 years	16,918	4%	111	0%	3	0%
15-24 years	68,901	15%	635	2%	17	0%
25-34 years	87,851	20%	1,554	6%	49	1%
35-44 years	73,515	16%	2,325	9%	136	2%
45-54 years	71,084	16%	3,354	13%	265	4%
55-64 years	56,950	13%	4,528	18%	638	10%
65-74 years	32,904	7%	4,919	19%	1,297	20%
75-84 years	18,917	4%	4,546	18%	1,798	28%
85+ years	10,946	2%	3,387	13%	2,130	34%
Unknown	803	0%	0	0%	0	0%
Total	446,251		25,499		6,333	

Gender	Cases	
Female	228,219	51%
Male	214,596	48%
Unknown	3,436	1%
Total	446,251	

Ethnicity	Cases		Hospitalizations		Deaths	
Hispanic	113,409	25%	8,052	32%	1,547	24%
Non-Hispanic	145,985	33%	15,704	62%	4,162	66%
Unknown	186,857	42%	1,743	7%	624	10%
Total	446,251		25,499		6,333	

Race and ethnicity	Cases		Hospitalizations		Deaths	
White	168,876	38%	15,166	59%	4,196	66%
Hispanic	74,523	17%	5,758	23%	1,208	19%
Non-Hispanic	77,112	17%	8,766	34%	2,735	43%
Unknown	17,241	4%	642	3%	253	4%
Black	65,857	15%	6,376	25%	1,310	21%
Hispanic	3,028	1%	293	1%	42	1%
Non-Hispanic	53,771	12%	5,876	23%	1,205	19%
Unknown	9,058	2%	207	1%	63	1%
Other race	45,363	10%	2,957	12%	497	8%
Hispanic	22,486	5%	1,803	7%	248	4%
Non-Hispanic	11,988	3%	975	4%	192	3%
Unknown	10,889	2%	179	1%	57	1%
Unknown race	166,155	37%	1,000	4%	330	5%
Hispanic	13,372	3%	198	1%	49	1%
Non-Hispanic	3,114	1%	87	0%	30	0%
Unknown	149,669	34%	715	3%	251	4%
Total	446,251		25,499		6,333	

Hospitalization counts include anyone who was hospitalized at some point during their illness. It does not reflect the number of people currently hospitalized. **Other race** includes any person with a race of American Indian/Alaskan native, Asian, native Hawaiian/Pacific Islander, or other.

COVID-19: deaths in Florida residents and staff of long-term care facilities

Data through Jul 28, 2020 verified as of Jul 29, 2020 at 09:25 AM

Data in this report are provisional and subject to change.

For current cases in residents or staff of long-term care facilities, please visit: <https://floridahealthcovid19.gov/>

County	Deaths		County	Deaths		County	Deaths				
Dade	601	<div></div>	21%	Jackson	21	<div></div>	1%	Santa Rosa	3	<div></div>	0%
Palm Beach	324	<div></div>	11%	Indian River	20	<div></div>	1%	Bradford	2	<div></div>	0%
Pinellas	270	<div></div>	10%	Hendry	18	<div></div>	1%	Hardee	2	<div></div>	0%
Broward	204	<div></div>	7%	Marion	16	<div></div>	1%	St. Johns	2	<div></div>	0%
Hillsborough	166	<div></div>	6%	Hernando	13	<div></div>	0%	Bay	1	<div></div>	0%
Lee	161	<div></div>	6%	Lake	12	<div></div>	0%	Desoto	1	<div></div>	0%
Polk	135	<div></div>	5%	Washington	12	<div></div>	0%	Flagler	1	<div></div>	0%
Manatee	100	<div></div>	4%	Alachua	11	<div></div>	0%	Gilchrist	1	<div></div>	0%
Sarasota	73	<div></div>	3%	Osceola	11	<div></div>	0%	Holmes	1	<div></div>	0%
Duval	65	<div></div>	2%	Walton	11	<div></div>	0%	Levy	1	<div></div>	0%
Volusia	64	<div></div>	2%	Okaloosa	10	<div></div>	0%	Monroe	1	<div></div>	0%
Escambia	56	<div></div>	2%	Gadsden	8	<div></div>	0%	Nassau	1	<div></div>	0%
St. Lucie	55	<div></div>	2%	Calhoun	6	<div></div>	0%	Okeechobee	1	<div></div>	0%
Charlotte	52	<div></div>	2%	Putnam	6	<div></div>	0%	Taylor	1	<div></div>	0%
Collier	51	<div></div>	2%	Leon	5	<div></div>	0%	Total	2,836		
Seminole	44	<div></div>	2%	Sumter	5	<div></div>	0%				
Brevard	41	<div></div>	1%	Columbia	4	<div></div>	0%				
Martin	40	<div></div>	1%	Jefferson	4	<div></div>	0%				
Clay	28	<div></div>	1%	Madison	4	<div></div>	0%				
Orange	28	<div></div>	1%	Baker	3	<div></div>	0%				
Pasco	28	<div></div>	1%	Citrus	3	<div></div>	0%				
Suwannee	25	<div></div>	1%	Highlands	3	<div></div>	0%				

Note: cases are summarized by the county of usual residence. Residents and staff may be cases associated with facilities that are not in their county of usual residence, resulting in cases being included below for counties that do not have facilities with known cases.

COVID-19: characteristics of 451,423 cases

Data through Jul 28, 2020 verified as of Jul 29, 2020 at 09:25 AM

Data in this report are provisional and subject to change.

Tables below include cases in Florida residents and non-Florida residents.

All 67 Florida counties have cases:

County	FL resident cases		Non-FL resident cases	Total cases	FL resident deaths	FL death rate
Dade	112,261	<div></div> 25%	882	113,143	1,455	1.3%
Broward	52,480	<div></div> 12%	490	52,970	638	1.2%
Palm Beach	31,876	<div></div> 7%	295	32,171	795	2.5%
Hillsborough	28,145	<div></div> 6%	123	28,268	323	1.1%
Orange	27,819	<div></div> 6%	372	28,191	203	0.7%
Duval	20,183	<div></div> 5%	215	20,398	149	0.7%
Pinellas	15,685	<div></div> 4%	115	15,800	400	2.6%
Lee	14,600	<div></div> 3%	277	14,877	279	1.9%
Polk	12,020	<div></div> 3%	39	12,059	251	2.1%
Collier	9,077	<div></div> 2%	101	9,178	120	1.3%
Manatee	8,098	<div></div> 2%	89	8,187	173	2.1%
Osceola	8,051	<div></div> 2%	79	8,130	61	0.8%
Escambia	6,619	<div></div> 1%	810	7,429	88	1.3%
Volusia	6,523	<div></div> 1%	49	6,572	107	1.6%
Seminole	6,308	<div></div> 1%	25	6,333	72	1.1%
Pasco	6,072	<div></div> 1%	29	6,101	68	1.1%
Sarasota	5,298	<div></div> 1%	51	5,349	116	2.2%
Brevard	5,233	<div></div> 1%	21	5,254	95	1.8%
St. Lucie	4,785	<div></div> 1%	20	4,805	114	2.4%
Lake	4,294	<div></div> 1%	32	4,326	50	1.2%
Marion	4,302	<div></div> 1%	12	4,314	55	1.3%
Leon	3,931	<div></div> 1%	73	4,004	14	0.4%
Martin	3,503	<div></div> 1%	24	3,527	73	2.1%
Alachua	3,304	<div></div> 1%	49	3,353	20	0.6%
Bay	3,195	<div></div> 1%	62	3,257	19	0.6%
St. Johns	3,104	<div></div> 1%	32	3,136	23	0.7%
Santa Rosa	3,102	<div></div> 1%	23	3,125	22	0.7%
Clay	2,688	<div></div> 1%	9	2,697	47	1.7%
Okaloosa	2,551	<div></div> 1%	26	2,577	22	0.9%
Columbia	2,315	<div></div> 1%	8	2,323	10	0.4%
Indian River	2,105	<div></div> 0%	13	2,118	38	1.8%
Charlotte	1,801	<div></div> 0%	6	1,807	85	4.7%
Hendry	1,606	<div></div> 0%		1,606	34	2.1%
Hernando	1,565	<div></div> 0%	14	1,579	26	1.7%
Jackson	1,530	<div></div> 0%	14	1,544	26	1.7%

County	FL resident cases		Non-FL resident cases	Total cases	FL resident deaths	FL death rate
Gadsden	1,260	0%	7	1,267	14	1.1%
Desoto	1,238	0%	2	1,240	14	1.1%
Putnam	1,223	0%		1,223	15	1.2%
Monroe	1,171	0%	27	1,198	6	0.5%
Citrus	1,158	0%	2	1,160	23	2.0%
Walton	1,015	0%	104	1,119	12	1.2%
Highlands	1,112	0%	3	1,115	25	2.2%
Suwannee	1,043	0%	17	1,060	32	3.1%
Sumter	1,038	0%	7	1,045	27	2.6%
Nassau	956	0%	53	1,009	8	0.8%
Okeechobee	854	0%	4	858	3	0.4%
Flagler	840	0%	10	850	10	1.2%
Hardee	806	0%	6	812	7	0.9%
Hamilton	559	0%	5	564	3	0.5%
Madison	555	0%	9	564	6	1.1%
Wakulla	538	0%	5	543	2	0.4%
Unknown	132	0%	396	528		
Levy	506	0%	3	509	2	0.4%
Washington	464	0%	5	469	13	2.8%
Holmes	393	0%	9	402	1	0.3%
Glades	390	0%		390	3	0.8%
Liberty	348	0%		348	2	0.6%
Gilchrist	334	0%		334	2	0.6%
Baker	329	0%		329	4	1.2%
Bradford	307	0%		307	3	1.0%
Taylor	285	0%	3	288	3	1.1%
Gulf	277	0%	9	286		
Calhoun	271	0%		271	7	2.6%
Dixie	241	0%		241	4	1.7%
Union	200	0%		200	4	2.0%
Jefferson	183	0%	5	188	5	2.7%
Franklin	101	0%	2	103	1	1.0%
Lafayette	95	0%		95	1	1.1%
Total	446,251		5,172	451,423	6,333	1.4%

COVID-19: characteristics of 446,251 Florida resident cases

Data through Jul 28, 2020 verified as of Jul 29, 2020 at 09:25 AM

Data in this report are provisional and subject to change.

The table below includes the cities and counties of residence for cases in Florida residents based on the patient's ZIP Code.

Note that city is not always received as part of the initial notification and may be missing while the case is being investigated.

City and county	Cases
Miami, Dade	70,073
Orlando, Orange	21,298
Jacksonville, Duval	18,798
Tampa, Hillsborough	17,124
Hialeah, Dade	16,319
Fort Lauderdale, Broward	12,041
Hollywood, Broward	10,213
West Palm Beach, Palm Beach	7,985
Homestead, Dade	7,682
Saint Petersburg, Pinellas	6,644
Kissimmee, Osceola	6,582
Naples, Collier	6,470
Pompano Beach, Broward	6,208
Fort Myers, Lee	6,092
Pensacola, Escambia	5,806
Bradenton, Manatee	5,557
Lake Worth, Palm Beach	4,442
Boca Raton, Palm Beach	4,258
Sarasota, Sarasota	4,016
Tallahassee, Leon	3,838
Lakeland, Polk	3,682
Ocala, Marion	3,376
Cape Coral, Lee	3,336
Miramar, Broward	3,252
Miami Beach, Dade	3,100
Clearwater, Pinellas	3,078
Lehigh Acres, Lee	2,938
Miami Gardens, Dade	2,936
Port Saint Lucie, St. Lucie	2,816
Boynton Beach, Palm Beach	2,809
Gainesville, Alachua	2,703
Winter Haven, Polk	2,465
Panama City, Bay	2,262
Lake City, Columbia	2,233
Coral Springs, Broward	2,230
Opa Locka, Dade	2,179
Delray Beach, Palm Beach	2,169
Immokalee, Collier	2,029
Brandon, Hillsborough	1,944
Doral, Dade	1,828
Davie, Broward	1,816
Sunrise, Broward	1,816
Fort Pierce, St. Lucie	1,768
Riverview, Hillsborough	1,745
Stuart, Martin	1,726
Milton, Santa Rosa	1,705
Apopka, Orange	1,693
Plant City, Hillsborough	1,683
North Miami Beach, Dade	1,661
Missing, Broward	1,629
Largo, Pinellas	1,616
Saint Augustine, St. Johns	1,598
Melbourne, Brevard	1,561
Jupiter, Palm Beach	1,529
Deerfield Beach, Broward	1,509
Sanford, Seminole	1,501
Tamarac, Broward	1,442
Plantation, Broward	1,441
Vero Beach, Indian River	1,432

COVID-19: characteristics of 446,251 Florida resident cases

Data through Jul 28, 2020 verified as of Jul 29, 2020 at 09:25 AM

Data in this report are provisional and subject to change.

The table below includes the cities and counties of residence for cases in Florida residents based on the patient's ZIP Code.

Note that city is not always received as part of the initial notification and may be missing while the case is being investigated.

City and county	Cases
New Port Richey, Pasco	1,416
Daytona Beach, Volusia	1,367
Lake Worth Beach, Palm Beach	1,353
Deltona, Volusia	1,263
Orange Park, Clay	1,262
Saint Cloud, Osceola	1,248
Palmetto, Manatee	1,230
Margate, Broward	1,142
Arcadia, Desoto	1,090
Clermont, Lake	1,083
Palm Bay, Brevard	1,083
Deland, Volusia	1,081
Palm Beach Gardens, Palm Beach	1,079
North Lauderdale, Broward	1,059
Winter Park, Orange	1,058
Winter Garden, Orange	1,047
Weston, Broward	1,038
Altamonte Springs, Seminole	1,029
Hallandale, Broward	1,006
Oviedo, Seminole	995
Royal Palm Beach, Palm Beach	993
North Miami, Dade	989
Davenport, Polk	988
Bonita Springs, Lee	977
Coconut Creek, Broward	977
Ocoee, Orange	938
Haines City, Polk	927
Port Charlotte, Charlotte	921
Coral Gables, Dade	896
Indiantown, Martin	886
Fort Walton Beach, Okaloosa	883
Palm Harbor, Pinellas	879
Land O Lakes, Pasco	874
Spring Hill, Hernando	867
Live Oak, Suwannee	862
Oakland Park, Broward	844
Wesley Chapel, Pasco	837
Clewiston, Hendry	835
Wellington, Palm Beach	834
Florida City, Dade	824
Okeechobee, Okeechobee	817
Pinellas Park, Pinellas	802
Ruskin, Hillsborough	796
Quincy, Gadsden	781
Longwood, Seminole	760
Lutz, Hillsborough	756
Belle Glade, Palm Beach	754
Seminole, Pinellas	747
Valrico, Hillsborough	741
Pembroke Pines, Broward	709
Punta Gorda, Charlotte	673
Windermere, Orange	669
Missing, Palm Beach	659
Casselberry, Seminole	655
Leesburg, Lake	654
Wimauma, Hillsborough	653
Jacksonville Beach, Duval	638
Bartow, Polk	617
Palm Coast, Flagler	611

COVID-19: characteristics of 446,251 Florida resident cases

Data through Jul 28, 2020 verified as of Jul 29, 2020 at 09:25 AM

Data in this report are provisional and subject to change.

The table below includes the cities and counties of residence for cases in Florida residents based on the patient's ZIP Code.

Note that city is not always received as part of the initial notification and may be missing while the case is being investigated.

City and county	Cases
Aventura, Dade	609
Palatka, Putnam	598
Miami Lakes, Dade	596
Ormond Beach, Volusia	573
Lake Mary, Seminole	572
Graceville, Jackson	555
Middleburg, Clay	555
Tavares, Lake	554
Cocoa, Brevard	550
Cantonment, Escambia	544
Labelle, Hendry	542
Crestview, Okaloosa	539
Kissimmee, Polk	534
North Port, Sarasota	532
Key West, Monroe	529
Brooksville, Hernando	524
Auburndale, Polk	524
Zephyrhills, Pasco	522
Missing, Dade	519
North Fort Myers, Lee	515
Hudson, Pasco	514
Port Richey, Pasco	505
Winter Springs, Seminole	498
Sebring, Highlands	492
Gulf Breeze, Santa Rosa	481
Loxahatchee, Palm Beach	477
Dade City, Pasco	474
Maitland, Orange	471
Crawfordville, Wakulla	465
Tarpon Springs, Pinellas	452
Marianna, Jackson	450
Seffner, Hillsborough	441
Mulberry, Polk	440
Lake Wales, Polk	435
Riviera Beach, Palm Beach	435
Port Orange, Volusia	428
Ponte Vedra Beach, St. Johns	424
Venice, Sarasota	420
Orange City, Volusia	417
Cooper City, Broward	416
Holiday, Pasco	415
Saint Johns, St. Johns	413
Sarasota, Manatee	410
Fernandina Beach, Nassau	408
South Bay, Palm Beach	399
Panama City Beach, Bay	396
Wauchula, Hardee	395
Dunedin, Pinellas	392
Jasper, Hamilton	387
Missing, Collier	386
Pahokee, Palm Beach	381
South Miami, Dade	378
Destin, Okaloosa	377
Navarre, Santa Rosa	377
Merritt Island, Brevard	375
Dania, Broward	371
Green Cove Springs, Clay	369
Pinecrest, Dade	365
Parrish, Manatee	365

COVID-19: characteristics of 446,251 Florida resident cases

Data through Jul 28, 2020 verified as of Jul 29, 2020 at 09:25 AM

Data in this report are provisional and subject to change.

The table below includes the cities and counties of residence for cases in Florida residents based on the patient's ZIP Code.

Note that city is not always received as part of the initial notification and may be missing while the case is being investigated.

City and county	Cases
The Villages, Sumter	362
Moore Haven, Glades	362
Eustis, Lake	361
Fleming Island, Clay	360
Palm City, Martin	358
Titusville, Brevard	357
Santa Rosa Beach, Walton	352
Fellsmere, Indian River	352
Dover, Hillsborough	349
Defuniak Springs, Walton	346
Avon Park, Highlands	346
Rockledge, Brevard	344
Lantana, Palm Beach	344
Madison, Madison	341
Gibsonton, Hillsborough	340
Missing, Hillsborough	338
Lynn Haven, Bay	333
Odessa, Hillsborough	330
Chipley, Washington	329
Estero, Lee	317
Bonifay, Holmes	315
Groveland, Lake	312
New Smyrna Beach, Volusia	306
Inverness, Citrus	304
Bristol, Liberty	301
Atlantic Beach, Duval	294
Polk City, Polk	294
Parkland, Broward	292
Key Biscayne, Dade	291
Missing, Duval	286
Lauderdale Lakes, Broward	286
Mount Dora, Lake	281
Crescent City, Putnam	278
Niceville, Okaloosa	273
Lauderhill, Broward	271
Debary, Volusia	268
Oldsmar, Pinellas	268
North Palm Beach, Palm Beach	245
Hobe Sound, Martin	242
Missing, Orange	242
Perry, Taylor	235
Pace, Santa Rosa	234
Wilton Manors, Broward	234
Frostproof, Polk	233
Apollo Beach, Hillsborough	233
Missing, Pasco	232
Palm Springs, Palm Beach	232
Starke, Bradford	231
Lithia, Hillsborough	227
Sun City Center, Hillsborough	221
Sebastian, Indian River	214
Ponte Vedra, St. Johns	212
Fort Meade, Polk	212
Trenton, Gilchrist	211
Ellenton, Manatee	210
Missing, Santa Rosa	210
Sneads, Jackson	207
Alachua, Alachua	205
Yulee, Nassau	203

COVID-19: characteristics of 446,251 Florida resident cases

Data through Jul 28, 2020 verified as of Jul 29, 2020 at 09:25 AM

Data in this report are provisional and subject to change.

The table below includes the cities and counties of residence for cases in Florida residents based on the patient's ZIP Code.

Note that city is not always received as part of the initial notification and may be missing while the case is being investigated.

City and county	Cases
Missing, St. Johns	202
Safety Harbor, Pinellas	202
Bushnell, Sumter	202
Summerfield, Marion	200
Missing, Hendry	194
Palmetto Bay, Dade	193
Missing, St. Lucie	189
Macclenny, Baker	188
Missing, Polk	185
Jensen Beach, Martin	174
Key Largo, Monroe	174
Bellevue, Marion	173
Wildwood, Sumter	170
Crystal River, Citrus	169
Williston, Levy	168
Chiefland, Levy	168
Missing, Hardee	163
Homosassa, Citrus	160
Lady Lake, Lake	158
Missing, Lee	156
Lake Placid, Highlands	154
Jacksonville, St. Johns	152
Mascotte, Lake	151
Port Saint Joe, Gulf	150
Bowling Green, Hardee	149
Blountstown, Calhoun	149
Edgewater, Volusia	148
Missing, Marion	148
Callahan, Nassau	147
Monticello, Jefferson	146
Missing, Volusia	145
Missing, Citrus	144
Mary Esther, Okaloosa	143
Shalimar, Okaloosa	142
Havana, Gadsden	140
Newberry, Alachua	140
Old Town, Dixie	139
Thonotosassa, Hillsborough	135
Lake Alfred, Polk	132
Cocoa Beach, Brevard	132
Dunnellon, Marion	132
Missing, Brevard	129
Marathon, Monroe	128
Missing, Desoto	128
Missing, Osceola	127
Satellite Beach, Brevard	127
Freeport, Walton	126
Myakka City, Manatee	125
Southwest Ranches, Broward	124
Neptune Beach, Duval	123
Missing, Madison	123
Minneola, Lake	122
Lake Butler, Union	122
Clearwater Beach, Pinellas	120
Jennings, Hamilton	120
Nokomis, Sarasota	115
Pierson, Volusia	114
Medley, Dade	113
Sorrento, Lake	112

COVID-19: characteristics of 446,251 Florida resident cases

Data through Jul 28, 2020 verified as of Jul 29, 2020 at 09:25 AM

Data in this report are provisional and subject to change.

The table below includes the cities and counties of residence for cases in Florida residents based on the patient's ZIP Code.

Note that city is not always received as part of the initial notification and may be missing while the case is being investigated.

City and county	Cases
Spring Hill, Pasco	111
Missing, Hernando	109
Chattahoochee, Gadsden	109
Missing, Martin	109
Carol City, Dade	109
Holly Hill, Volusia	107
Missing, Highlands	107
Lake Park, Palm Beach	104
West Melbourne, Brevard	103
Englewood, Charlotte	102
Hilliard, Nassau	100
Marco Island, Collier	100
Missing, Indian River	98
Tavernier, Monroe	98
Midway, Gadsden	97
De Leon Springs, Volusia	96
Bunnell, Flagler	95
Lecanto, Citrus	93
Bell, Gilchrist	92
Gulfport, Pinellas	91
Missing, Seminole	90
Miramar Beach, Walton	87
Missing, Pinellas	87
Alva, Lee	87
Zolfo Springs, Hardee	86
Missing, Monroe	86
Beverly Hills, Citrus	85
Indialantic, Brevard	85
Mayo, Lafayette	85
Jay, Santa Rosa	85
Molino, Escambia	83
Palm Beach, Palm Beach	83
Cross City, Dixie	82
Tequesta, Palm Beach	81
Englewood, Sarasota	80
Wewahitchka, Gulf	79
Umatilla, Lake	79
Montverde, Lake	78
Missing, Sarasota	78
Bronson, Levy	76
Flagler Beach, Flagler	76
Fruitland Park, Lake	76
Missing, Nassau	75
Fort White, Columbia	75
Chuluota, Seminole	75
Cape Canaveral, Brevard	72
East Palatka, Putnam	72
Gotha, Orange	72
Trinity, Pasco	71
Hernando, Citrus	69
Oxford, Sumter	69
Missing, Clay	69
Rotunda West, Charlotte	68
Missing, Jackson	68
Greenwood, Jackson	68
Dunnellon, Citrus	67
Geneva, Seminole	66
South Daytona, Volusia	66
Avon Park, Polk	66

COVID-19: characteristics of 446,251 Florida resident cases

Data through Jul 28, 2020 verified as of Jul 29, 2020 at 09:25 AM

Data in this report are provisional and subject to change.

The table below includes the cities and counties of residence for cases in Florida residents based on the patient's ZIP Code.

Note that city is not always received as part of the initial notification and may be missing while the case is being investigated.

City and county	Cases
Keystone Heights, Clay	65
Kenneth City, Pinellas	65
High Springs, Alachua	65
Archer, Alachua	63
West Miami, Dade	62
Gretna, Gadsden	62
Vernon, Washington	61
Cottdondale, Jackson	61
Altha, Calhoun	60
Eagle Lake, Polk	60
Glen Saint Mary, Baker	60
Fort Myers Beach, Lee	60
Mims, Brevard	59
Missing, Lake	59
Missing, Escambia	58
Ave Maria, Collier	58
Hastings, St. Johns	57
Hawthorne, Alachua	56
Missing, Manatee	56
Weeki Wachee, Hernando	56
Lake Panasoffkee, Sumter	56
Missing, Flagler	55
Melbourne Beach, Brevard	54
Youngstown, Bay	54
Zellwood, Orange	54
Missing, Okaloosa	53
Missing, Leon	53
Century, Escambia	53
Southport, Bay	52
Indian Rocks Beach, Pinellas	52
O Brien, Suwannee	52
Pomona Park, Putnam	52
Baker, Okaloosa	52
Missing, Unknown	51
Silver Springs, Marion	51
Interlachen, Putnam	51
Belle Isle, Orange	51
Branford, Suwannee	49
Dundee, Polk	49
Citra, Marion	49
Reddick, Marion	49
White Springs, Hamilton	49
Oakland, Orange	49
Islamorada, Monroe	48
Missing, Gulf	48
Sanderson, Baker	48
Missing, Levy	47
Surfside, Dade	47
South Pasadena, Pinellas	47
Coconut Grove, Dade	47
Bal Harbour, Dade	46
Missing, Washington	46
Greenville, Madison	45
Missing, Gadsden	45
Apalachicola, Franklin	45
Biscayne Park, Dade	45
Satsuma, Putnam	45
Viera, Brevard	44
Seville, Volusia	44

COVID-19: characteristics of 446,251 Florida resident cases

Data through Jul 28, 2020 verified as of Jul 29, 2020 at 09:25 AM

Data in this report are provisional and subject to change.

The table below includes the cities and counties of residence for cases in Florida residents based on the patient's ZIP Code.

Note that city is not always received as part of the initial notification and may be missing while the case is being investigated.

City and county	Cases
Webster, Sumter	44
Osprey, Sarasota	43
Raiford, Union	42
Grand Island, Lake	42
Greenacres, Palm Beach	40
Missing, Wakulla	40
Ocklawaha, Marion	39
Indian Harbour Beach, Brevard	39
San Antonio, Pasco	38
Lawtey, Bradford	38
Missing, Walton	37
Coleman, Sumter	37
Lakewood Ranch, Manatee	36
Grand Ridge, Jackson	36
El Portal, Dade	36
Missing, Okeechobee	36
Missing, Calhoun	36
Mcdavid, Escambia	36
Lee, Madison	35
Poinciana, Polk	35
Lake Hamilton, Polk	34
Fountain, Bay	34
Christmas, Orange	34
Celebration, Osceola	34
Sanibel, Lee	34
Howey-In-The-Hills, Lake	33
Citrus Springs, Citrus	33
Missing, Baker	32
Melrose, Putnam	32
Stock Island, Monroe	32
Center Hill, Sumter	31
Cutler Bay, Dade	31
Malabar, Brevard	31
Princeton, Dade	31
Elkton, St. Johns	31
Florida State University, Leon	30
Mcalpin, Suwannee	30
Juno Beach, Palm Beach	30
Missing, Holmes	30
Missing, Gilchrist	29
Welaka, Putnam	29
Lauderdale By The Sea, Broward	28
Lake Helen, Volusia	28
Inlet Beach, Walton	28
Madeira Beach, Pinellas	28
Malone, Jackson	28
Steinhatchee, Taylor	28
Osteen, Volusia	27
Missing, Sumter	27
Westville, Holmes	27
Big Pine Key, Monroe	27
The Villages, Lake	26
Floral City, Citrus	26
Bokeelia, Lee	26
Canal Point, Palm Beach	26
Carrabelle, Franklin	26
Atlantis, Palm Beach	26
Alford, Jackson	26
Babson Park, Polk	25

COVID-19: characteristics of 446,251 Florida resident cases

Data through Jul 28, 2020 verified as of Jul 29, 2020 at 09:25 AM

Data in this report are provisional and subject to change.

The table below includes the cities and counties of residence for cases in Florida residents based on the patient's ZIP Code.

Note that city is not always received as part of the initial notification and may be missing while the case is being investigated.

City and county	Cases
Greensboro, Gadsden	25
Hallandale Beach, Broward	25
Valparaiso, Okaloosa	25
Hypoluxo, Palm Beach	25
Micanopy, Alachua	25
Wellborn, Suwannee	25
Weirsdale, Marion	25
Summerland Key, Monroe	24
Naranja, Dade	24
Hosford, Liberty	24
Patrick Air Force Base, Brevard	24
Morriston, Levy	24
Astatula, Lake	24
Anthony, Marion	23
Felda, Hendry	23
Lady Lake, Sumter	23
Laurel Hill, Okaloosa	23
Missing, Bay	23
Astor, Lake	23
Belleair, Pinellas	23
Fern Park, Seminole	23
Florida Dept Of Corrections, Union	22
Missing, Liberty	22
Ochopee, Collier	22
San Mateo, Putnam	21
Sunny Isles Beach, Dade	21
Bradenton Beach, Manatee	20
Destin, Walton	20
Odessa, Pasco	20
Grant-Valkaria, Brevard	20
Eglin Air Force Base, Okaloosa	20
Bryceville, Nassau	20
Belleair Beach, Pinellas	20
Missing, Jefferson	20
Eastpoint, Franklin	19
Miami Springs, Dade	19
Unknown, Orange	19
Longboat Key, Manatee	19
Campbellton, Jackson	18
Saint James City, Lee	18
Haverhill, Palm Beach	18
Yalaha, Lake	18
Kissimmee, Orange	18
Sweetwater, Dade	18
Caryville, Washington	17
Hialeah Gardens, Dade	17
Altoona, Lake	17
Missing, Suwannee	17
Holt, Okaloosa	17
Crystal Beach, Pinellas	17
Sumterville, Sumter	17
Ponce De Leon, Holmes	17
Missing, Bradford	16
Baldwin, Duval	16
Temple Terrace, Hillsborough	16
Lamont, Jefferson	16
Kendall, Dade	16
Edgewood, Orange	16
Missing, Charlotte	16

COVID-19: characteristics of 446,251 Florida resident cases

Data through Jul 28, 2020 verified as of Jul 29, 2020 at 09:25 AM

Data in this report are provisional and subject to change.

The table below includes the cities and counties of residence for cases in Florida residents based on the patient's ZIP Code.

Note that city is not always received as part of the initial notification and may be missing while the case is being investigated.

City and county	Cases
Clarksville, Calhoun	16
Golden Beach, Dade	15
North Bay Village, Dade	15
Oak Hill, Volusia	15
Village Of Palmetto Bay, Dade	15
Panacea, Wakulla	14
Missing, Union	14
Ponce Inlet, Volusia	13
Alafaya, Orange	13
Sopchoppy, Wakulla	13
Missing, Taylor	13
Carrollwood, Hillsborough	13
Waverly, Polk	13
Paisley, Lake	13
Ona, Hardee	13
Missing, Dixie	13
Callaway, Bay	13
Placida, Charlotte	13
Kindred, Osceola	12
Fort Denaud, Hendry	12
Terra Ceia, Manatee	12
Bascom, Jackson	12
Georgetown, Putnam	12
Goulds, Dade	12
Singer Island, Palm Beach	12
Fruit Cove, St. Johns	12
Miami Shores, Dade	12
Tice, Lee	12
Fort Mccoy, Marion	12
Barefoot Bay, Brevard	11
Brooker, Bradford	11
Lighthouse Point, Broward	11
Pinetta, Madison	11
Okahumpka, Lake	11
Florahome, Putnam	11
Winter Park, Seminole	11
Eaton Park, Polk	11
West Park, Broward	11
Hollister, Putnam	11
Holmes Beach, Manatee	11
Nocatee, Desoto	11
Bayonet Point, Pasco	10
Waldo, Alachua	10
Missing, Franklin	10
Harmony, Osceola	10
Heathrow, Seminole	10
Santa Fe, Alachua	10
Unknown, Dade	10
Palmdale, Glades	10
Mexico Beach, Bay	10
Sebastian, Brevard	10
Bellview, Escambia	10
Missing, Glades	10
Tierra Verde, Pinellas	9
North Redington Beach, Pinellas	9
Balm, Hillsborough	9
Lake Suzy, Desoto	9
Mangonia Park, Palm Beach	9
Walnut Hill, Escambia	9

COVID-19: characteristics of 446,251 Florida resident cases

Data through Jul 28, 2020 verified as of Jul 29, 2020 at 09:25 AM

Data in this report are provisional and subject to change.

The table below includes the cities and counties of residence for cases in Florida residents based on the patient's ZIP Code.

Note that city is not always received as part of the initial notification and may be missing while the case is being investigated.

City and county	Cases
Dania Beach, Broward	9
Bay Harbor Islands, Dade	9
Treasure Island, Pinellas	8
Ocean Ridge, Palm Beach	8
Sun City, Hillsborough	8
Highland City, Polk	8
Missing, Lafayette	8
Intercession City, Osceola	8
Kinard, Calhoun	8
Palm Shores, Brevard	8
Lutz, Pasco	8
Matlacha, Lee	8
Hampton, Bradford	8
Labelle, Glades	8
Reunion, Osceola	7
Sydney, Hillsborough	7
Tyndall Air Force Base, Bay	7
Bay Pines, Pinellas	7
La Crosse, Alachua	7
Buena Ventura Lakes, Osceola	7
Tioga, Alachua	7
Orange Lake, Marion	7
Inglis, Levy	7
Gonzalez, Escambia	7
Eloise, Polk	7
Key Colony Beach, Monroe	7
Enterprise, Volusia	6
Wabasso, Indian River	6
Homosassa Springs, Citrus	6
Venus, Highlands	6
Wahneta, Polk	6
Lorida, Highlands	6
Missing, Alachua	6
Cedar Key, Levy	6
Jacksonville, Unknown	6
Kathleen, Polk	6
Maitland, Seminole	6
Palma Sola, Manatee	6
Paxton, Walton	6
Penney Farms, Clay	5
Pensacola Beach, Santa Rosa	5
Woodville, Leon	5
Long Boat Key, Manatee	5
Cloud Lake, Palm Beach	5
Ponce De Leon, Walton	5
Saint Pete Beach, Pinellas	5
Crystal Springs, Pasco	5
Mango, Hillsborough	5
Orlando, Seminole	5
Shady Grove, Taylor	5
Bradley, Polk	5
Miami, Unknown	5
Bagdad, Santa Rosa	5
Dowling Park, Suwannee	5
Hollywood, Unknown	5
Kenansville, Osceola	5
Goodland, Collier	5
Altamonte Springs, Orange	5
West Delray Beach, Palm Beach	5

COVID-19: characteristics of 446,251 Florida resident cases

Data through Jul 28, 2020 verified as of Jul 29, 2020 at 09:25 AM

Data in this report are provisional and subject to change.

The table below includes the cities and counties of residence for cases in Florida residents based on the patient's ZIP Code.

Note that city is not always received as part of the initial notification and may be missing while the case is being investigated.

City and county	Cases
Perrine, Dade	5
Aloma, Orange	5
Poinciana, Osceola	5
Hiawassee, Orange	5
Indian Lake Estates, Polk	5
Maxville, Duval	4
Hernando Beach, Hernando	4
Ft Pierce, St. Lucie	4
Centerville, Leon	4
Pine Castle, Orange	4
Ybor City, Hillsborough	4
Eatonville, Orange	4
Lehigh, Lee	4
Tallevast, Manatee	4
Steinhatchee, Dixie	4
Nobleton, Hernando	4
Northdale, Hillsborough	4
Celebration, Orange	4
Leisure City, Dade	4
Missing, Putnam	4
Perdido Key, Escambia	4
Nichols, Polk	4
Ferndale, Lake	4
Lowell, Marion	4
Ridge Manor, Pasco	4
Unknown, Broward	4
Siesta Key, Sarasota	4
Saint Lucie West, St. Lucie	4
Tangerine, Orange	4
Pembroke Park, Broward	4
Mayport, Duval	4
North Venice, Sarasota	4
Cudjoe Key, Monroe	4
Homeland, Polk	4
Bonifay, Washington	4
Ebro, Washington	4
Plymouth, Orange	4
Dinsmore, Duval	3
Davenport, Osceola	3
Lake City, Suwannee	3
Green Acres, Palm Beach	3
Hialeah, Unknown	3
Cutler Ridge, Dade	3
Duette, Manatee	3
East Lake, Marion	3
Azalea Park, Orange	3
Anna Maria, Manatee	3
Trilby, Pasco	3
Missing, Hamilton	3
Long Key, Monroe	3
Parker, Bay	3
Pine Hills, Orange	3
Boca Grande, Lee	3
Buckingham, Lee	3
Candler, Marion	3
Graceville, Holmes	3
Hallandale Beach, Broward	3
Fisher Island, Dade	3
Trenton, Levy	3

COVID-19: characteristics of 446,251 Florida resident cases

Data through Jul 28, 2020 verified as of Jul 29, 2020 at 09:25 AM

Data in this report are provisional and subject to change.

The table below includes the cities and counties of residence for cases in Florida residents based on the patient's ZIP Code.

Note that city is not always received as part of the initial notification and may be missing while the case is being investigated.

City and county	Cases
Quail Heights, Dade	3
Little Torch Key, Monroe	3
Micco, Brevard	3
Lynbrook, Broward	3
Lake Como, Putnam	3
Lake Monroe, Seminole	3
Fort Lauderdale, Unknown	3
Captiva, Lee	3
Belleair Bluffs, Pinellas	3
Oneco, Manatee	3
Mount Plymouth, Lake	3
Vernon, Bay	3
Virginia Gardens, Dade	3
South Palm Beach, Palm Beach	3
Westchase, Hillsborough	3
Miromar Lakes, Lee	3
Miami, Broward	3
Mayport Naval Housing, Duval	3
Gulf Stream, Palm Beach	3
City Of Sunrise, Broward	3
Braden River, Manatee	3
Fpo, Duval	3
Elfers, Pasco	3
Port Saint John, Brevard	3
Pasadena, Pinellas	3
Saint Leo, Pasco	3
Saint Marks, Wakulla	3
PSI, Unknown	3
Rubonia, Manatee	3
Pompano Beach, Unknown	3
Indian Creek Village, Dade	3
Gulf Hammock, Levy	3
Lulu, Columbia	3
Lacoochee, Pasco	3
Lamont, Taylor	2
Milligan, Okaloosa	2
Glenwood, Volusia	2
Gulf Breeze, Escambia	2
Homeless, Hillsborough	2
Deerfield Beach, Unknown	2
Venice, Manatee	2
Unknown, Seminole	2
Sugarloaf, Monroe	2
Longboat Key, Sarasota	2
Lakeshore, Polk	2
Earleton, Alachua	2
Branford, Lafayette	2
Clewiston, Palm Beach	2
Ormond Beach, Flagler	2
Miramar, Dade	2
Mesa, Unknown	2
San Carlos Park, Lee	2
Sorrento, Orange	2
Sand Lake, Orange	2
Roseland, Indian River	2
Orlando, Osceola	2
West Palm Beach, Unknown	2
Jonesville, Alachua	2
Lake Butler, Bradford	2

COVID-19: characteristics of 446,251 Florida resident cases

Data through Jul 28, 2020 verified as of Jul 29, 2020 at 09:25 AM

Data in this report are provisional and subject to change.

The table below includes the cities and counties of residence for cases in Florida residents based on the patient's ZIP Code.

Note that city is not always received as part of the initial notification and may be missing while the case is being investigated.

City and county	Cases
Lauderhill, Unknown	2
Miami, Martin	2
Fort Lauderdale, Dade	2
Durant, Hillsborough	2
El Jobean, Charlotte	2
Everglades National Park, Dade	2
Wakulla Springs, Wakulla	2
Union Park, Orange	2
Samoset, Manatee	2
Mulberry, Hillsborough	2
New Smyrna, Volusia	2
Oakland Park, Unknown	2
Palma Ceia, Hillsborough	2
Archer, Levy	2
Hawthorne, Putnam	2
Hallandale Beach, Unknown	2
Jensen Beach, St. Lucie	2
Lockhart, Orange	2
Loxahatchee Groves, Palm Beach	2
Laud-By-The-Sea, Broward	2
Ramrod Key, Monroe	2
River Ranch, Polk	2
Ponte Vedra, Duval	2
Port Charlotte, Unknown	2
University Park, Manatee	2
Orlando, Unknown	2
Valkaria, Brevard	2
The Villages, Marion	2
West Villages, Sarasota	2
Inlet Beach, Bay	2
Jacksonville, Clay	2
Clermont, Orange	2
Sunny Hills, Washington	2
Switzerland, St. Johns	2
Tampa, Pinellas	2
Oklawaha, Marion	2
Laurel, Sarasota	2
Manalapan, Palm Beach	2
Watersound, Walton	2
Madison, Unknown	2
Margate, Unknown	2
Sparr, Marion	2
Port Salerno, Martin	2
Town N Country, Hillsborough	2
Bayshore Gardens, Manatee	2
Daytona Beach Shores, Volusia	2
Everglades City, Collier	2
Fort Charlotte, Charlotte	2
Horseshoe Beach, Dixie	2
Lealman, Pinellas	2
Loughman, Polk	2
Lake Harbor, Palm Beach	2
Chokoloskee, Collier	2
Alturas, Polk	2
Goldenrod, Seminole	2
Forest City, Orange	2
Murdock, Charlotte	2
Orlando, Brevard	2
Yankeetown, Levy	2

COVID-19: characteristics of 446,251 Florida resident cases

Data through Jul 28, 2020 verified as of Jul 29, 2020 at 09:25 AM

Data in this report are provisional and subject to change.

The table below includes the cities and counties of residence for cases in Florida residents based on the patient's ZIP Code.

Note that city is not always received as part of the initial notification and may be missing while the case is being investigated.

City and county	Cases
Westlake, Palm Beach	1
Wimauma, Manatee	1
Telogia, Liberty	1
Turmero, Dade	1
Tampa, Dade	1
Palm Bay, Dade	1
Palm Coast, Orange	1
Port Charlotte Fl, Unknown	1
Saint Cloud, Orange	1
Saint Petersburg, Dade	1
San Pedro Sula, Dade	1
Seminole, Orange	1
Scottsmoor, Brevard	1
Fort Myers, Seminole	1
Fwb, Unknown	1
Gastonia, Polk	1
Deltona , Volusia	1
999999, Okaloosa	1
Bartow, Unknown	1
Caryville, Holmes	1
Cassadaga, Volusia	1
Champions Gate, Polk	1
Bostwick, Putnam	1
Coral Springs, Unknown	1
Cosselberry, Orange	1
Darien, Pasco	1
Lanark Village, Franklin	1
Hialean, Unknown	1
Miami Granders, Dade	1
Live Oak, Columbia	1
Hurlburt Field, Okaloosa	1
Gibsonia, Polk	1
Greenacres, Unknown	1
Hallandate Ben, Unknown	1
Cottondale, Washington	1
Destin, Unknown	1
Everett, Dade	1
Apopka, Unknown	1
Alligator Point, Wakulla	1
Amelia City, Nassau	1
Bonita Springs, Collier	1
Tampa, Orange	1
South Fort Myers, Lee	1
Redington Beach, Pinellas	1
Redington Shores, Pinellas	1
Saint Cloud, Manatee	1
University Of Central Fl, Orange	1
Valrico, Orange	1
Wewahitchka, Calhoun	1
Winterpark, Unknown	1
Longwood, Orange	1
Mid Florida, Seminole	1
Nokomis, Palm Beach	1
N/A, Duval	1
Orlando, Orange	1
Ocala, Unknown	1
Ocean Breeze, Martin	1
Palm City, Unknown	1
Lake Wales, Escambia	1

COVID-19: characteristics of 446,251 Florida resident cases

Data through Jul 28, 2020 verified as of Jul 29, 2020 at 09:25 AM

Data in this report are provisional and subject to change.

The table below includes the cities and counties of residence for cases in Florida residents based on the patient's ZIP Code.

Note that city is not always received as part of the initial notification and may be missing while the case is being investigated.

City and county	Cases
Miamf, Dade	1
Milton, Escambia	1
Olustee, Baker	1
Okeechobee, St. Lucie	1
South Daytona Beach, Volusia	1
Tewksbury, Orange	1
Wesley Chapel, Alachua	1
Weston, Dade	1
Unknown, Columbia	1
Unknown, Palm Beach	1
Tampa Palms, Hillsborough	1
Sewalls Point, Martin	1
San Antonio, Unknown	1
Pine Ridge, Citrus	1
Clermont, Polk	1
Cortez, Manatee	1
Dade City, Hillsborough	1
Celeste, Broward	1
Arnondale, Hillsborough	1
Bay Lake, Orange	1
Beverly Beach, Flagler	1
Aollywoss, Dade	1
99, Unknown	1
Air Mail Facility, Dade	1
Kissimmee, Brevard	1
Hollywood, Dade	1
Grandin, Putnam	1
Greenville, Jefferson	1
Fl, Dade	1
Florence Villa, Polk	1
Fort Pierce, Martin	1
Estero, Collier	1
Fellsmele, Brevard	1
Doctors Inlet, Clay	1
Venice, Hillsborough	1
Washington, Unknown	1
West Bradenton, Manatee	1
Wintergarden, Orange	1
Seven Springs, Pasco	1
Unkown, Seminole	1
Tallahassee, Unknown	1
Port Everglades, Broward	1
Orlando, Columbia	1
Saint Augusaintine Beach, St. Johns	1
Palm Beach Shores, Palm Beach	1
Niceville, Walton	1
Mount Pleasant, Gadsden	1
Louisville, Broward	1
Middlesburg, Duval	1
Jupiter, Duval	1
Immokalee, Lee	1
Indian Shores, Pinellas	1
Hallandale, Dade	1
Davenport, Orange	1
Boca Raton, Orange	1
Brooksville, Pasco	1
Orlando, Manatee	1
Pooler, Broward	1
Pennsacola, Escambia	1

COVID-19: characteristics of 446,251 Florida resident cases

Data through Jul 28, 2020 verified as of Jul 29, 2020 at 09:25 AM

Data in this report are provisional and subject to change.

The table below includes the cities and counties of residence for cases in Florida residents based on the patient's ZIP Code.

Note that city is not always received as part of the initial notification and may be missing while the case is being investigated.

City and county	Cases
Sarasota, Unknown	1
Seacrest, Walton	1
North Lauderdale, Unknown	1
Okeechobee, Martin	1
Okeechobi, Unknown	1
North Miami, Palm Beach	1
North Port, Manatee	1
Twentynine Palms, Broward	1
University Of Miami, Dade	1
Unknown, Manatee	1
St Cloud, Orange	1
Suwannee, Dixie	1
Salem, Taylor	1
Windermere, Unknown	1
Xifamk, Dade	1
Evinston, Alachua	1
Fanning Springs, Gilchrist	1
Fellsmere, Brevard	1
Fernandina, Nassau	1
Graham, Bradford	1
Cypress Gardens, Polk	1
Hillsboro Beach, Broward	1
Holder, Citrus	1
Lauderdale Lakes, Unknown	1
Key West Naval Air Station, Monroe	1
Indian River Shores, Indian River	1
Indian Rock Beach, Pinellas	1
Miamksaohes, Dade	1
Metter, Manatee	1
Miami Dade, Unknown	1
Franklin, Orange	1
Haines City, Orange	1
Clearwater, Hillsborough	1
Dade City, Hernando	1
Apo, Collier	1
Astor, Volusia	1
Austin, Dade	1
Bonifay, Unknown	1
Mayport Naval Station, Duval	1
Mount Dora, Orange	1
New Church, Palm Beach	1
New Port Richey, Hillsborough	1
Jena, Taylor	1
Litchfield Park, Unknown	1
Laurel Hill, Walton	1
Marathon Shores, Monroe	1
Weston, Unknown	1
West Hollywood, Broward	1
Winter Springs, Orange	1
Oviedo, Orange	1
Okeechobee, Highlands	1
Orange Park, Duval	1
Pensacola Naval Hospital, Escambia	1
Point Washington, Walton	1
Seacrest, Bay	1
Stiamk, Dade	1
Unknown Out Of Area, Palm Beach	1
Unknown, Duval	1
Titusville, Seminole	1

COVID-19: characteristics of 446,251 Florida resident cases

Data through Jul 28, 2020 verified as of Jul 29, 2020 at 09:25 AM

Data in this report are provisional and subject to change.

The table below includes the cities and counties of residence for cases in Florida residents based on the patient's ZIP Code.

Note that city is not always received as part of the initial notification and may be missing while the case is being investigated.

City and county	Cases
Shady Hills, Pasco	1
Shalimar, Escambia	1
Sharpes, Brevard	1
Sanford, Orange	1
Rivera Beach, Palm Beach	1
Trinity, Pinellas	1
Unknown, Unknown	1
Unable To Obtain, Palm Beach	1
University Of Tampa, Hillsborough	1
Unk, Alachua	1
Watersound, Bay	1
Yeehaw, Okeechobee	1
Miami Gardens, Unknown	1
Morriston, Marion	1
Mount Dora, Seminole	1
Naples, Lee	1
North Fort Myers, Charlotte	1
North Laud, Unknown	1
Oldsrav, Manatee	1
Perth Amboy, Hillsborough	1
Panama City, Unknown	1
Cape Haze, Charlotte	1
Davie, Unknown	1
Branford, Gilchrist	1
Alva, Escambia	1
Bayou George, Bay	1
Homossa, Orange	1
Hosford, Calhoun	1
Jacksonville Naval Air Station, Duval	1
Jacksonville Naval Hospital, Duval	1
Jacksonville, Nassau	1
Tamarac, Dade	1
Port Saint Lucie, Palm Beach	1
Rocky Point, Hillsborough	1
Rosemary Beach, Walton	1
Saint Johns, Duval	1
Salt Springs, Marion	1
Orl, Osceola	1
Pensacola Beach, Escambia	1
Pensacola, Unknown	1
Other, Dade	1
Ozona, Pinellas	1
Unknown, Volusia	1
Westville, Walton	1
White Springs, Columbia	1
Cypress, Jackson	1
Clarcona, Orange	1
Coconut Ck, Unknown	1
Alpharetta, Broward	1
Cape Cord, Lee	1
Homeless, Monroe	1
Homeless, Pinellas	1
Hutchinson Island, St. Lucie	1
Hallandale, Unknown	1
Gainesville, Dade	1
Miccosukee, Leon	1
Miamc, Dade	1
Miami, Lee	1
Land O Lakes, Hillsborough	1

COVID-19: characteristics of 446,251 Florida resident cases

Data through Jul 28, 2020 verified as of Jul 29, 2020 at 09:25 AM

Data in this report are provisional and subject to change.

The table below includes the cities and counties of residence for cases in Florida residents based on the patient's ZIP Code. Note that city is not always received as part of the initial notification and may be missing while the case is being investigated.

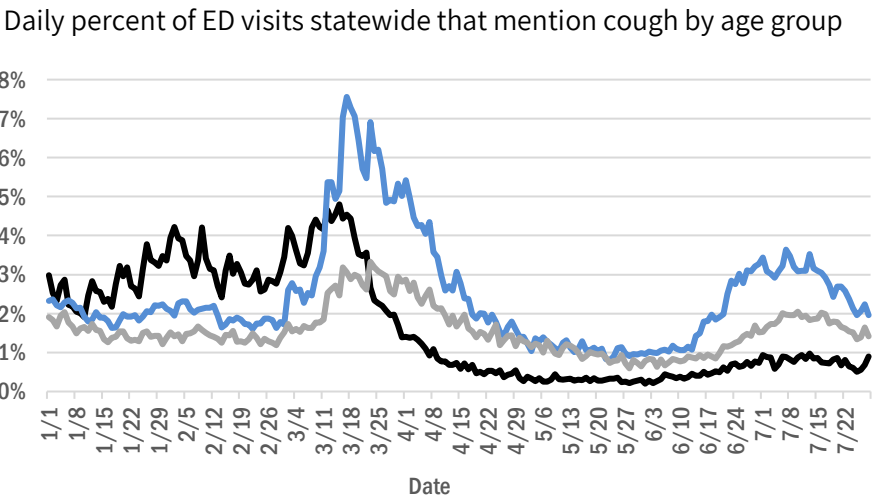
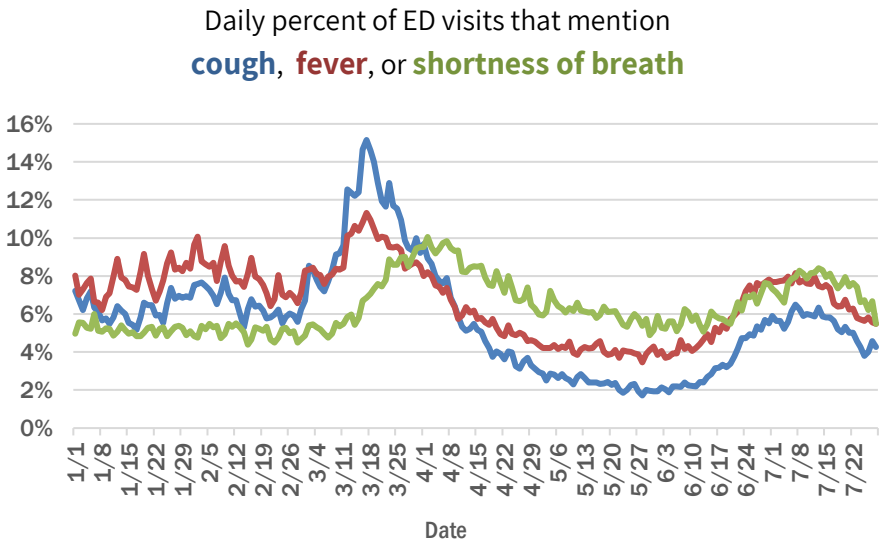
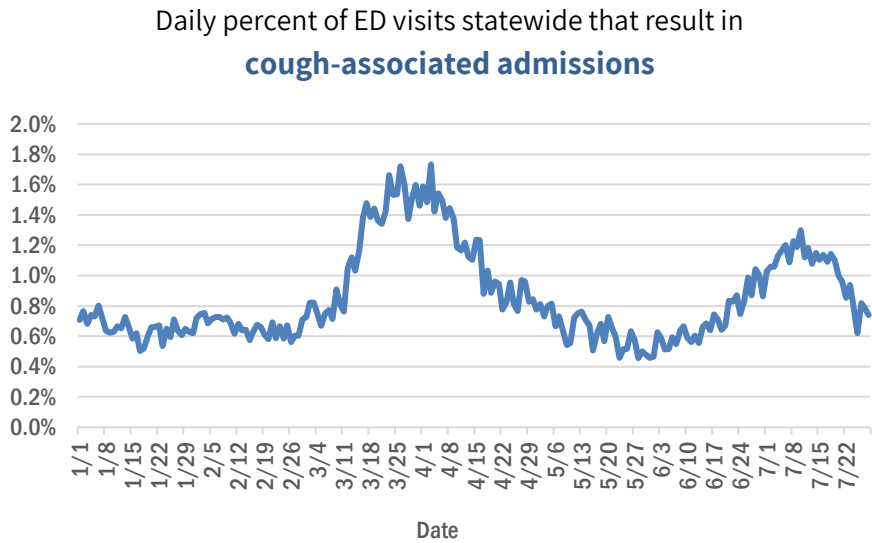
City and county	Cases
Layton, Monroe	1
Lehigh Acers, Lee	1
Jacksonville, Orange	1
Total	446,251

COVID-19: additional surveillance information

Data through Jul 28, 2020 verified as of Jul 29, 2020 at 09:25 AM

Data in this report are provisional and subject to change.

Statewide emergency department (ED) chief complaint and admission data



The Electronic Surveillance System for the Early Notification of Community-Based Epidemics (ESSENCE-FL) includes chief complaint data from 211 of 212 Florida EDs. Data are transmitted electronically to ESSENCE-FL daily or hourly.

COVID-19: All persons with tests reported

Data through Jul 28, 2020 verified as of Jul 29, 2020 at 09:25 AM

Data in this report are provisional and subject to change.

The table below includes persons with laboratory results that the Department of Health has received electronically or by mail/fax for Florida residents and non-Florida residents.

County	Awaiting testing	Inconclusive	Negative	Positive	Percent positive	Total tested
Dade	236	1,398	487,548	113,143	19%	602,089
Broward	143	517	328,476	52,970	14%	381,963
Palm Beach	229	549	217,303	32,171	13%	250,023
Hillsborough	174	323	185,111	28,268	13%	213,702
Orange	385	265	217,821	28,191	11%	246,277
Duval	133	216	167,985	20,398	11%	188,599
Pinellas	18	116	140,360	15,800	10%	156,276
Lee	22	35	90,165	14,877	14%	105,077
Polk	39	69	73,223	12,059	14%	85,351
Collier	184	62	48,208	9,178	16%	57,448
Manatee	7	46	68,582	8,187	11%	76,815
Osceola	82	128	48,064	8,130	14%	56,322
Escambia	18	31	55,016	7,429	12%	62,476
Volusia	32	71	58,093	6,572	10%	64,736
Seminole	46	62	55,414	6,333	10%	61,809
Pasco	68	43	54,064	6,101	10%	60,208
Sarasota	26	39	60,921	5,349	8%	66,309
Brevard	8	59	71,655	5,254	7%	76,968
St. Lucie	241	50	33,354	4,805	13%	38,209
Lake	46	63	53,508	4,326	7%	57,897
Marion	606	58	37,542	4,314	10%	41,914
Leon	33	109	48,190	4,004	8%	52,303
Martin	48	33	20,360	3,527	15%	23,920
Alachua	4	22	61,247	3,353	5%	64,622
Bay	11	31	18,725	3,257	15%	22,013
St. Johns	39	32	33,176	3,136	9%	36,344
Santa Rosa	17	29	21,643	3,125	13%	24,797
Clay	15	16	28,307	2,697	9%	31,020
Okaloosa	48	35	22,466	2,577	10%	25,078
Columbia	4	53	9,610	2,323	19%	11,986
Indian River	49	10	22,053	2,118	9%	24,181
Charlotte	9	13	20,195	1,807	8%	22,015
Hendry	2	13	6,152	1,606	21%	7,771
Hernando	1	9	15,173	1,579	9%	16,761
Jackson	5	11	8,023	1,544	16%	9,578
Gadsden	8	32	9,057	1,267	12%	10,356
Desoto	6	8	7,748	1,240	14%	8,996
Putnam	2	8	9,943	1,223	11%	11,174
Monroe	52	8	10,137	1,198	11%	11,343
Citrus	16	12	15,141	1,160	7%	16,313
Walton	2	38	7,144	1,119	13%	8,301
Highlands	8	12	13,322	1,115	8%	14,449
Suwannee	3	10	5,527	1,060	16%	6,597
Sumter	24	14	14,844	1,045	7%	15,903
Nassau	25	18	12,421	1,009	8%	13,448
Okeechobee	1	13	5,098	858	14%	5,969
Flagler	5	19	12,379	850	6%	13,248
Hardee		5	3,387	812	19%	4,204

COVID-19: All persons with tests reported

Data through Jul 28, 2020 verified as of Jul 29, 2020 at 09:25 AM

Data in this report are provisional and subject to change.

The table below includes persons with laboratory results that the Department of Health has received electronically or by mail/fax for Florida residents and non-Florida residents.

County	Awaiting testing	Inconclusive	Negative	Positive	Percent positive	Total tested
Hamilton	1	3	3,255	564	15%	3,822
Madison	5	9	4,120	564	12%	4,693
Wakulla	2	37	6,454	543	8%	7,034
Unknown	1	36	4,621	528	10%	5,185
Levy		9	4,994	509	9%	5,512
Washington	4	3	3,458	469	12%	3,930
Holmes	2	8	3,482	402	10%	3,892
Glades		2	686	390	36%	1,078
Liberty			2,622	348	12%	2,970
Gilchrist	4	6	3,019	334	10%	3,359
Baker	14	1	3,753	329	8%	4,083
Bradford	1	3	3,616	307	8%	3,926
Taylor	3	3	2,522	288	10%	2,813
Gulf	1	6	2,913	286	9%	3,205
Calhoun	1	5	1,844	271	13%	2,120
Dixie		2	2,090	241	10%	2,333
Union		1	2,985	200	6%	3,186
Jefferson		2	1,949	188	9%	2,139
Franklin	1	4	2,327	103	4%	2,434
Lafayette		3	751	95	11%	849
Total	3,220	4,956	3,075,342	451,423	13%	3,531,721

COVID-19: testing by laboratory

Data through Jul 28, 2020 verified as of Jul 29, 2020 at 09:25 AM

Data in this report are provisional and subject to change.

The numbers in the table below represent the number for whom test results were received by the Department of Health. A person can be tested by more than one laboratory and can have both positive and negative results. **Therefore, the sum of the numbers in each column will be larger than the total number of people tested.**

Reporting lab	Inconclusive	Negative	Positive	Percent positive	Total
LABORATORY CORPORATION OF AMERICA	955	590,405	86,633	13%	677,993
QUEST DIAGNOSTICS - TAMPA	3,547	583,573	81,449	12%	668,569
BIO REFERENCE LABORATORIES, INC	3,939	385,587	74,330	16%	463,856
GENETWORX	662	356,311	30,547	8%	387,520
REALTOX LABS LLC	1,772	177,532	29,955	14%	209,259
CURATIVE_LABS	1,950	132,467	9,870	7%	144,287
NORTHWEST LABORATORY	167	112,200	5,303	5%	117,670
ADVENT HEALTH LAB	112	101,270	13,981	12%	115,363
KORVALABS, INC	734	79,319	3,370	4%	83,423
MEDICAL DIAGNOSTIC LABORATORIES	687	71,962	10,166	12%	82,815
BIOCOLLECTIONS WORLDWIDE, INC	198	51,635	8,370	14%	60,203
MAYO CLINIC LABORATORIES	97	54,123	5,300	9%	59,520
MEMORIAL REGIONAL HOSPITAL SOUTH	18	42,675	10,798	20%	53,491
QUEST DIAGNOSTICS NICHOLS INSTITUTE, INC.	172	46,664	5,903	11%	52,739
BAYCARE LABORATORIES LLC	253	46,362	4,920	10%	51,535
BPHL-JACKSONVILLE	12	37,294	7,069	16%	44,375
ORLANDO REG MED CENTER CLINICAL LAB	397	38,326	4,843	11%	43,566
SACRED HEART HOSPITAL LABORATORY	2	38,924	4,494	10%	43,420
DIATHERIX LABORATORIES		34,467	4,733	12%	39,200
TAMPA GENERAL HOSPITAL	4	34,584	2,633	7%	37,221
TESTING MATTERS INC		32,593	4,483	12%	37,076
UF PATHLABS	33	34,719	1,314	4%	36,066
ELABNETWORK	1	33,225	2,551	7%	35,777
MAKO MEDICAL LABORATORIES	1,056	27,025	4,950	15%	33,031
VIRACOR-EUROFINS LABORATORIES		24,321	7,861	24%	32,182
ARUP LABORATORIES		29,274	2,134	7%	31,408
JACKSON MEMORIAL HOSPITAL CLINICAL LAB	79	25,074	5,977	19%	31,130
BPHL-MIAMI	198	23,142	4,602	16%	27,942
BPHL-TAMPA (SPECTRUM BLVD)	44	20,906	3,392	14%	24,342
SHANDS AT THE UNIVERSITY OF FLORIDA	78	21,525	1,086	5%	22,689
AIT LABORATORIES		18,765	2,181	10%	20,946
LAKELAND REGIONAL MEDICAL CENTER	40	16,804	1,909	10%	18,753
ST VINCENT'S MEDICAL CENTER - RIVERSIDE	1	16,756	1,986	11%	18,743
WALGREENS	9	14,747	2,416	14%	17,172
CAPE CORAL HOSPITAL CLINICAL LABORATORY		13,800	2,536	16%	16,336
BROWARD GENERAL MEDICAL CENTER-CLINICAL LAB	2	12,648	1,765	12%	14,415
SHANDS JACKSONVILLE MEDICAL CENTER INC	31	11,186	967	8%	12,184
BAPTIST HOSPITAL OF MIAMI CLINICAL LABORATORY	5	10,134	2,038	17%	12,177
STATLAB_MOBILE		11,335	782	6%	12,117
CLEVELAND CLINIC HOSPITAL LAB	4	10,423	1,040	9%	11,467
BAPTIST MEDICAL CENTER JACKSONVILLE	1	10,578	667	6%	11,246
FLORIDA HOSPITAL - TAMPA	5	9,901	960	9%	10,866
ADVENTHEALTH DAYTONA BEACH	17	9,967	717	7%	10,701
NAPLES COMMUNITY HOSPITAL	12	9,280	1,052	10%	10,344
SARASOTA MEMORIAL HOSPITAL MAIN LAB	12	8,765	829	9%	9,606
ST JOSEPHS HOSPITAL LABORATORY	7	8,453	1,111	12%	9,571
PALMETTO GENERAL HOSPITAL LAB	3	7,137	2,265	24%	9,405

COVID-19: testing by laboratory

Data through Jul 28, 2020 verified as of Jul 29, 2020 at 09:25 AM

Data in this report are provisional and subject to change.

The numbers in the table below represent the number for whom test results were received by the Department of Health. A person can be tested by more than one laboratory and can have both positive and negative results. **Therefore, the sum of the numbers in each column will be larger than the total number of people tested.**

Reporting lab	Inconclusive	Negative	Positive	Percent positive	Total
INTEGRATED REGIONAL LABORATORIES LLP		7,356	1,362	16%	8,718
MOUNT SINAI MEDICAL CENTER	5	7,639	928	11%	8,572
Florida_Hospital	7	6,651	1,387	17%	8,045
JFK MEDICAL CENTER LAB	1	6,586	1,296	16%	7,883
LABCORP BURLINGTON (ELR)	3	7,568	270	3%	7,841
MORTON PLANT HOSPITAL-ADLER INSTITUTE	7	7,114	589	8%	7,710
SAINT MARY'S MEDICAL CENTER	10	6,499	1,082	14%	7,591
NORTH FLORIDA REGIONAL MEDICAL CENTER		6,868	628	8%	7,496
NICKLAUS CHILDREN'S HOSPITAL	15	5,994	1,373	19%	7,382
TALLAHASSEE MEMORIAL HOSPITAL	23	6,730	573	8%	7,326
UNIVERSITY OF MIAMI HOSPITAL	9	5,928	1,370	19%	7,307
BRANDON REGIONAL HOSPITAL		6,116	1,167	16%	7,283
MILLENNIUM PHYSICIAN GROUP		5,925	1,268	18%	7,193
SOUTH MIAMI HOSPITAL LAB	8	6,204	967	13%	7,179
JUPITER MEDICAL CENTER LAB	30	6,061	920	13%	7,011
REAL DIAGNOSTICS	77	6,449	465	7%	6,991
ECCO LAB GROUP CO	205	4,919	1,518	23%	6,642
WELLINGTON REGIONAL MED CTR LAB	3	5,586	937	14%	6,526
MEMORIAL REGIONAL HOSPITAL CLINICAL LABORATORY	7	5,918	465	7%	6,390
FLORIDA HOSPITAL WATERMAN LABORATORY	13	5,856	472	7%	6,341
INDIAN RIVER MEDICAL CENTER LAB		5,956	368	6%	6,324
SUNPATH MEDICAL DIAGNOSTICS LABORATORY	34	5,355	789	13%	6,178
LARKIN COMMUNITY HOSPITAL	10	5,028	941	16%	5,979
APPLIED INGENUITY DIAGNOSTICS LLC		5,410	329	6%	5,739
PANCARE OF FLORIDA INC		5,471	265	5%	5,736
AEGIS SCIENCES CORPORATION	26	5,243	417	7%	5,686
BAPTIST HOSPITAL OF MIAMI MOLECULAR DIAGNOSTICS	50	4,684	705	13%	5,439
DELRAY MEDICAL CENTER	2	4,684	626	12%	5,312
HOMESTEAD HOSPITAL CLINICAL LABORATORY		4,065	1,119	22%	5,184
ST ANTHONY'S HOSPITAL LAB	10	4,528	614	12%	5,152
MEMORIAL HOSPITAL JACKSONVILLE	8	4,080	1,058	21%	5,146
ARNOLD PALMER MEDICAL CENTER CLINICAL LAB		4,867	132	3%	4,999
WINTER HAVEN HOSPITAL CLINICAL LABORATORY	1	4,049	757	16%	4,807
OSCEOLA REGIONAL MEDICAL CENTER	1	3,958	788	17%	4,747
WEST KENDALL BAPTIST HOSPITAL LABORATORY	2	3,788	953	20%	4,743
ST JOSEPHS HOSPITAL SOUTH LABORATORY	6	3,943	606	13%	4,555
LEESBURG REGIONAL MEDICAL CENTER		3,987	500	11%	4,487
GOOD SAMARITAN MEDICAL CENTER LAB	1	3,657	760	17%	4,418
MEASE COUNTRYSIDE LAB		3,927	428	10%	4,355
ORANGE PARK MEDICAL CENTER	4	3,321	893	21%	4,218
BAPTIST MEDICAL CENTER SOUTH		3,852	307	7%	4,159
GULF COAST MEDICAL CENTER MICROLAB		3,076	1,052	25%	4,128
LAWNWOOD REGIONAL MEDICAL CENTER	1	3,444	660	16%	4,105
QUEST DIAGNOSTICS NICHOLS INSTITUTE - SJC (ELR)	11	3,426	499	13%	3,936

COVID-19: testing by laboratory

Data through Jul 28, 2020 verified as of Jul 29, 2020 at 09:25 AM

Data in this report are provisional and subject to change.

The numbers in the table below represent the number for whom test results were received by the Department of Health. A person can be tested by more than one laboratory and can have both positive and negative results. **Therefore, the sum of the numbers in each column will be larger than the total number of people tested.**

Reporting lab	Inconclusive	Negative	Positive	Percent positive	Total
FLORIDA HOSPITAL HEARTLAND MED CTR CLINICAL LAB	1	3,390	335	9%	3,726
WESTSIDE REGIONAL MED CTR	2	2,984	731	20%	3,717
HALIFAX MEDICAL CENTER LAB	10	3,176	519	14%	3,705
DRS CLACK SPENCER WHITE & MCCORMACK PA D/B/A		3,136	522	14%	3,658
BAPTIST HOSPITAL LABORATORY	4	3,066	559	15%	3,629
MANATEE MEMORIAL HOSPITAL		3,224	401	11%	3,625
WEST BOCA MEDICAL CENTER LAB		3,216	399	11%	3,615
WEST FLORIDA HOSPITAL LAB		2,776	783	22%	3,559
MEMORIAL HOSPITAL WEST LABORATORY SERVICES	10	3,148	360	10%	3,518
AVENTURA HOSPITAL LAB		2,572	935	27%	3,507
Lee Memorial Hospital		2,847	641	18%	3,488
CORAL GABLES HOSPITAL CLINICAL LABORATORY		2,617	860	25%	3,477
MERCY HOSPITAL A CAMPUS OF PLANTATION GEN HOSP LAB	1	2,546	916	26%	3,463
HEALTH PARK MEDICAL CENTER CLINICAL LAB		2,757	703	20%	3,460
FLORIDA HOSPITAL WESLEY CHAPEL	1	3,140	314	9%	3,455
BETHESDA HOSPITAL EAST		3,006	412	12%	3,418
NCH NORTH NAPLES HOSPITAL LAB	1	3,036	369	11%	3,406
NEW YORK STATE ELR - SUNRISE MEDICAL LABORATORIES		3,288	77	2%	3,365
ABL MEDICAL CARE LLC		2,915	449	13%	3,364
DOCTORS HOSPITAL	2	2,639	692	21%	3,333
LARGO MEDICAL CENTER		2,849	462	14%	3,311
BROWARD HEALTH NORTH CLINICAL LABORATORY		2,835	468	14%	3,303
NORTHWEST MEDICAL CENTER	1	2,507	787	24%	3,295
LARKIN COMMUNITY HOSPITAL INC DBA CARDIOTROPIC		742	2,545	77%	3,287
PALM BEACH GARDENS MEDICAL CTR LAB		2,945	334	10%	3,279
CLEVELAND CLINIC MARTIN SOUTH HOSPITAL		2,957	301	9%	3,258
OAK HILL HOSPITAL		2,912	343	11%	3,255
CORAL SPRINGS MED CTR		2,905	342	11%	3,247
PALMS WEST HOSPITAL LAB	2	2,526	690	21%	3,218
NORTH SHORE MEDICAL CENTER		2,389	717	23%	3,106
QUEST DIAGNOSTICS - WEST HILLS	13	2,875	136	4%	3,024
FLORIDA HOSPITAL ZEPHYRHILLS		2,802	219	7%	3,021
RUTGERS CLINICAL GENOMICS LABORATORY	5	2,819	145	5%	2,969
MOFFITT CANCER CENTER	5	2,905	31	1%	2,941
FLORIDA HOSPITAL FLAGLER	2	2,724	177	6%	2,903
Capital Regional Medical Ctr		2,307	539	19%	2,846
FLORIDA MEDICAL CENTER - A CAMPUS OF NORTH SHORE	2	2,331	452	16%	2,785
BLAKE MEDICAL CENTER		2,255	527	19%	2,782
THE VILLAGES REGIONAL HOSPITAL		2,519	210	8%	2,729
REGIONAL MEDCIAL CENTER BAYONET POINT	1	2,450	218	8%	2,669
PLANTATION GENERAL HOSPITAL		1,935	705	27%	2,640
NEMOURS CHILDRENS HOSPITAL		2,568	53	2%	2,621
BAYFRONT MEDICAL CENTER	10	1,905	688	26%	2,603
MARTIN HOSPITAL SOUTH LAB		2,504	90	3%	2,594
FLORIDA HOSPITAL OF CARROLLWOOD		2,168	395	15%	2,563

COVID-19: testing by laboratory

Data through Jul 28, 2020 verified as of Jul 29, 2020 at 09:25 AM

Data in this report are provisional and subject to change.

The numbers in the table below represent the number for whom test results were received by the Department of Health. A person can be tested by more than one laboratory and can have both positive and negative results. **Therefore, the sum of the numbers in each column will be larger than the total number of people tested.**

Reporting lab	Inconclusive	Negative	Positive	Percent positive	Total
FLORIDA HOSPITAL DELAND	2	2,102	441	17%	2,545
NORTHSIDE HOSPITAL AND HEART INSTITUTE		2,120	350	14%	2,470
MEDICAL CENTER OF TRINITY CLINICAL LABORATORY		2,049	380	16%	2,429
MORTON PLANT-MEASE		2,220	180	8%	2,400
ST JOSEPHS NORTH HOSPITAL LAB		2,098	267	11%	2,365
OCALA REGIONAL MEDICAL CENTER		2,099	250	11%	2,349
LAKE CITY MEDICAL CENTER		1,801	530	23%	2,331
IMPERIAL POINT MEDICAL CENTER		2,080	231	10%	2,311
BAPTIST MEDICAL CENTER - BEACHES		2,159	141	6%	2,300
LAKEWOOD RANCH MEDICAL CENTER		1,975	219	10%	2,194
GULF COAST MEDICAL CENTER LAB		1,705	413	19%	2,118
CENTRAL FLORIDA REGIONAL HOSPITAL		1,795	308	15%	2,103
DR. P. PHILLIPS HOSPITAL		2,048	42	2%	2,090
CARDIOTROPIC LABS		1,544	533	26%	2,077
ST LUCIE MEDICAL CENTER		1,664	385	19%	2,049
MARTIN MEMORIAL HEALTH SYSTEM LABORATORY		1,880	154	8%	2,034
SOUTH FLORIDA BAPTIST HOSPITAL MICRO	1	1,689	313	16%	2,003
WESTCHESTER HOSPITAL	12	1,626	320	16%	1,958
QUEST DIAGNOSTICS	3	1,640	259	14%	1,902
POINCIANA MEDICAL CENTER		1,362	534	28%	1,896
SOUTH LAKE HOSPITAL CLINICAL LAB		1,809	40	2%	1,849
BAPTIST MEDICAL CENTER - NASSAU		1,726	94	5%	1,820
UNIVERSITY HOSPITAL AND MEDICAL CENTER		1,293	476	27%	1,769
MEDCOMP SCIENCES LLC	25	1,114	623	35%	1,762
FLORIDA HOSPITAL NORTH PINELLAS	5	1,613	126	7%	1,744
PHYSICIANS REGIONAL MEDICAL CENTER - PINE RIDGE RD		1,412	312	18%	1,724
INFORM DIAGNOSTICS, INC		1,612	63	4%	1,675
WEST PALM HOSPITAL LAB		1,422	249	15%	1,671
WEST MARION COMMUNITY HOSPITAL LAB		1,494	154	9%	1,648
MEMORIAL HOSPITAL- MIRAMAR	10	1,500	130	8%	1,640
QUEST NEW ENGLAND	3	1,526	52	3%	1,581
SOUTH SEMINOLE HOSPITAL LABORATORY		1,515	57	4%	1,572
MEMORIAL HOSPITAL MICRO		1,395	177	11%	1,572
ST PETERSBURG GENERAL HOSPITAL		1,132	434	28%	1,566
OPTEO LABORATORY		1,502	29	2%	1,531
LEE HEALTH COCONUT POINT CLINICAL LAB	1	1,219	298	20%	1,518
MEASE DUNEDIN HOSPITAL	4	1,352	146	10%	1,502
CITRUS MEMORIAL HOSPITAL LABORATORY		1,442	58	4%	1,500
QUEST DIAGNOSTICS LENEXA	9	1,374	109	7%	1,492
LEON MEDICAL CENTERS LLC		1,095	343	24%	1,438
OVIEDO MEDICAL CENTER		1,199	229	16%	1,428
BAPTIST NORTH EMERGENCY CENTER		1,013	414	29%	1,427
MEMORIAL HOSPITAL PEMBROKE	3	1,249	172	12%	1,424
FORT WALTON BEACH MEDICAL CENTER		1,227	172	12%	1,399
HIALEAH HOSPITAL	3	1,021	375	27%	1,399
FLORIDA HOSPITAL FISH MEMORIAL		1,137	247	18%	1,384
UHEALTH CORAL GABLES/LENNAR MED CTR		1,294	61	5%	1,355

COVID-19: testing by laboratory

Data through Jul 28, 2020 verified as of Jul 29, 2020 at 09:25 AM

Data in this report are provisional and subject to change.

The numbers in the table below represent the number for whom test results were received by the Department of Health. A person can be tested by more than one laboratory and can have both positive and negative results. **Therefore, the sum of the numbers in each column will be larger than the total number of people tested.**

Reporting lab	Inconclusive	Negative	Positive	Percent positive	Total
QUEST DIAGNOSTICS - ATLANTA	1	1,143	193	14%	1,337
ST VINCENT'S MEDICAL CENTER - SOUTHSIDE		1,307	26	2%	1,333
CLEVELAND CLINIC TRADITION HOSPITAL		1,158	156	12%	1,314
DOCTORS HOSPITAL OF SARASOTA CLINICAL LABORATORY		1,147	143	11%	1,290
VISTA CLINICAL		745	530	42%	1,275
PALMS OF PASADENA HOSPITAL		1,061	181	15%	1,242
CLINICORE LABS		1,112	88	7%	1,200
LOWER KEYS MEDICAL CENTER		1,089	99	8%	1,188
RAULERSON HOSPITAL		978	192	16%	1,170
CLEVELAND CLINIC MARTIN NORTH HOSPITAL		1,008	157	13%	1,165
SOUTH BAY HOSPITAL MICRO		929	176	16%	1,105
PUTNAM COMMUNITY MEDICAL CENTER		943	142	13%	1,085
QUEST DIAGNOSTICS - MIRAMAR	6	299	764	71%	1,069
BARTOW REGIONAL MEDICAL CENTER	1	880	157	15%	1,038
ANNE BATES LEACH EYE HOSPITAL/ ABLEH MICROBIOLOGY LABORATORY		991	29	3%	1,020
PHYSICIANS REGIONAL MEDICAL CENTER - COLLIER BLVD	1	809	208	20%	1,018
BMCT Molecular Diagnostics Subsection		819	198	19%	1,017
P4 CLINICAL, LLC	12	848	157	15%	1,017
AMERICAN HEALTH ASSOCIATES	5	520	482	48%	1,007
TWIN CITIES HOSPITAL		900	76	8%	976
LMHS		901	75	8%	976
BETHESDA HOSPITAL WEST		855	95	10%	950
ORLANDO VA MEDICAL CENTER		853	94	10%	947
VIKOR SCIENTIFIC	2	603	336	36%	941
SYNERGY LABORATORIES	2	848	57	6%	907
ADVENTHEALTH OCALA LABORATORY		729	178	20%	907
NIGHT LITE PEDIATRICS		631	257	29%	888
HIGHLANDS REGIONAL MEDICAL CENTER		753	124	14%	877
LAKE SIDE MEDICAL CENTER		574	296	34%	870
FLORIDA HOSPITAL ORLANDO		745	73	9%	818
GULF BREEZE HOSPITAL LAB	1	689	108	14%	798
ST VINCENTS CLAY COUNTY		775	23	3%	798
SACRED HEART-EMERALD COAST		647	121	16%	768
WALGREEN CO	1	644	95	13%	740
ENGLEWOOD COMMUNITY HOSPITAL		662	60	8%	722
ACCESSDX	6	365	344	48%	715
AVENTUS BIOLABS	1	380	323	46%	704
VISTA CLINICAL DIAGNOSTICS		358	340	49%	698
QUEST DIAGNOSTICS INFECTIOUS DISEASE INC	10	295	389	56%	694
BAPTIST EMERGENCY CENTER OAKLEAF		561	116	17%	677
CAPSTONE HEALTHCARE		437	213	33%	650
ACCESS MEDICAL LABORATORIES		243	379	61%	622
NONA SCIENTIFIC	1	490	122	20%	613
PWN HEALTH	2	394	210	35%	606
MARINERS HOSPITAL		517	78	13%	595
BAPTIST HEALTH EMERGENCY CENTER COUNTRY WALK		483	101	17%	584
QUEST DIAGNOSTICS WOOD DALE	1	516	51	9%	568

COVID-19: testing by laboratory

Data through Jul 28, 2020 verified as of Jul 29, 2020 at 09:25 AM

Data in this report are provisional and subject to change.

The numbers in the table below represent the number for whom test results were received by the Department of Health. A person can be tested by more than one laboratory and can have both positive and negative results. **Therefore, the sum of the numbers in each column will be larger than the total number of people tested.**

Reporting lab	Inconclusive	Negative	Positive	Percent positive	Total
BAPTIST EMERGENCY CENTER CLAY		476	69	13%	545
UNIVERSITY OF MIAMI HOSPITAL & CLINICS	1	493	47	9%	541
PATIENTS CHOICE LABORATORIES		178	352	66%	530
ORLANDO HEALTH		11	515	98%	526
PATHNOSTICS		45	472	91%	517
EGLIN AIRFORCE BASE LAB		478	38	7%	516
NCH HEALTHCARE SYSTEM MICROBIOLOGY LAB		1	509	100%	510
LAB24 INC			504	100%	504
VAMC ORLANDO		296	204	41%	500
HEALTHQUEST ESOTERICS		74	421	85%	495
BARDMOOR LABORATORY	1	392	59	13%	452
LABCORP RTP	1	41	406	91%	448
LEE MEMORIAL HOSPITAL LAB			440	100%	440
MARTIN MEMORIAL HEALTH SYSTEMS LABORATORY		407	33	8%	440
QUEST	3	85	350	80%	438
PANCARE OF FLORIDA, INC			437	100%	437
BIOREFERENCE LABORATORIES		27	409	94%	436
AVERO DIAGNOSTICS - IRVING		367	57	13%	424
QUEST DIAGNOSTICS - IRVING	7	249	168	40%	424
NONE		185	229	55%	414
BOSTON HEART DIAGNOSTICS CORP		392	18	4%	410
TAMPA COMMUNITY HOSPITAL		264	145	35%	409
LUMINUS DIAGNOSTICS		292	109	27%	401
SOUTHEAST ALABAMA MEDICAL CENT		356	35	9%	391
UHEALTH DEERFIELD BEACH/UMSYLVESTER DEERFIELD BEACH LABORATORY	2	353	23	6%	378
NCH NORTHEAST		240	136	36%	376
QUEST DIAGNOSTICS NICHOLS INSTITUTE	5	351	16	4%	372
INFORM DIAGNOSTICS		346	2	1%	348
JACKSON HOSPITAL LAB		310	28	8%	338
MEMORIAL PEMBROKE 24/7 CARE CENTER		245	87	26%	332
ADVANCE MEDICAL OF NAPLES			328	100%	328
DESOTO MEMORIAL HOSPITAL CLINICAL LABORATORY	2	244	82	25%	328
CLARITY LABS		276	49	15%	325
NEW YORK STATE ELR - NORTH SHORE LONG ISLAND JEWISH HEALTH		298	22	7%	320
DAVITA LABS		290	26	8%	316
PATIENTS FIRST - MAHAN DRIVE		161	152	49%	313
DYNIX DIAGNOSTICS		187	124	40%	311
MARTIN MEMORIAL LABORATORY AT ST LUCIE WEST		263	43	14%	306
APPLIED INGENUITY DIAGNOSTICS		279	27	9%	306
ASSURANCE SCIENTIFIC LABORATORIES		232	68	23%	300
PATIENT'S FIRST		3	292	99%	295
AVECINA MEDICAL OAKLEAF		92	200	68%	292
BIO COLLECTIONS INC	1	151	139	48%	291
NEW YORK STATE ELR - LENCO MEDICAL LABORATORY		277	13	4%	290
JACKSON HOSPITAL CLINICAL LABORATORY		232	57	20%	289
NEW YORK STATE ELR - NYU HOSPITALS CENTER CLINICAL LABORATORIES		268	11	4%	279
ECCOLAB GROUP	1	73	201	73%	275

COVID-19: testing by laboratory

Data through Jul 28, 2020 verified as of Jul 29, 2020 at 09:25 AM

Data in this report are provisional and subject to change.

The numbers in the table below represent the number for whom test results were received by the Department of Health. A person can be tested by more than one laboratory and can have both positive and negative results. **Therefore, the sum of the numbers in each column will be larger than the total number of people tested.**

Reporting lab	Inconclusive	Negative	Positive	Percent positive	Total
MINUTECLINIC LLC #3703		237	34	13%	271
NEW YORK STATE ELR - DEPARTMENT OF CLINICAL LABS		266	4	1%	270
PHYSICIANS STAT LAB		134	133	50%	267
UAB HIGHLANDS LABORATORY		264	2	1%	266
LABCORP		32	233	88%	265
LAB CORP	1	96	154	61%	251
MAKO GENOMICS		218	12	5%	230
GENESIS REFERENCE LABORATORIES		1	227	100%	228
FLO-MEDILAB SERVICES		80	146	65%	226
THERADOC		150	72	32%	222
NORTH FLORIDA PEDIATRICS-TALLAHASSEE		203	18	8%	221
JAY HOSPITAL CLINICAL LABORATORY		174	44	20%	218
NCF DIAGNOSTICS & DNA TECHNOLOGIES	10	14	191	89%	215
EXPRESS GENE MOLECULAR DIAGNOSTIC LABORATORY		2	213	99%	215
HOLY CROSS HOSPITAL LABORATORY			215	100%	215
MEDSCAN LABORATORY INC		136	75	36%	211
BIOCERNA LLC	8	152	48	23%	208
CORE DIAGNOSTIC LABORATORIES LLC		174	31	15%	205
BAPTIST MD ANDERSON CANCER CENTER		190			190
ADVENTHEALTH LAB			190	100%	190
MILLENNIUM PATHOLOGY			189	100%	189
VAMC WEST PALM LAB			188	100%	188
HENDRY REGIONAL MEDICAL CENTER		2	186	99%	188
CURATIVE LABS		6	173	97%	179
TENNESSEE DOH - NASHVILLE	1	160	14	8%	175
ST CLOUD REGIONAL MEDICAL CENTER		126	47	27%	173
LABCORP TAMPA	1	16	150	90%	167
UNKNOWN		12	154	93%	166
FLAGLER HOSPITAL	3	16	146	88%	165
PATHGROUP LABS LLC		90	74	45%	164
HOLMES REGIONAL MEDICAL CENTER		3	160	98%	163
FLORIDA LABORATORY ANALYSIS		27	135	83%	162
GENESIS MEDICAL LABORATORY MIAMI FL.		78	84	52%	162
NITE LITE PEDIATRICS		96	63	40%	159
SUNRISE MEDICAL LABORATORIES		113	44	28%	157
ORLANDO VETERANS AFFAIRS MEDICAL CENTER		32	122	79%	154
NEW YORK STATE ELR - NEW YORK PRESBYTERIAN HOSPITAL CUMC CLINICAL		139	13	9%	152
ORLANDO VAMC		79	70	47%	149
SMA SPECIALITY MEDICAL LAB		53	96	64%	149
SANFORD REFERENCE LAB		147	1	1%	148
AKESOGEN		137	11	7%	148
AVECINA MEDICAL SOUTHSIDE		60	83	58%	143
NCH HEALTHCARE BONITA		96	47	33%	143
ASCEND CLINICAL		138	4	3%	142
JAMES A. HALEY VETERANS MICRO LAB			140	100%	140
BAY PINES VAMC CLINICAL LABORATORY		3	136	98%	139
NEW YORK STATE ELR - MOUNT SINAI LABORATORY		128	8	6%	136

COVID-19: testing by laboratory

Data through Jul 28, 2020 verified as of Jul 29, 2020 at 09:25 AM

Data in this report are provisional and subject to change.

The numbers in the table below represent the number for whom test results were received by the Department of Health. A person can be tested by more than one laboratory and can have both positive and negative results. **Therefore, the sum of the numbers in each column will be larger than the total number of people tested.**

Reporting lab	Inconclusive	Negative	Positive	Percent positive	Total
BUREAU OF CLINICAL LABORATORIES		115	21	15%	136
FLORIDA HOSPITAL WAUCHULA		68	66	49%	134
LABTECH DIAGNOSTIC		83	49	37%	132
MEDARBOR DIAGNOSTICS		1	130	99%	131
UAB UNIVERSITY OF ALABAMA HOSPITAL LAB		126	4	3%	130
MEMPHIS PATHOLOGY LABORATORY	1	124	5	4%	130
BMHSI-AEL MICROBIOLOGY LABORATORY	2	102	24	19%	128
NEO GENOMICS - FORT MYERS	1	122	3	2%	126
NEW YORK STATE ELR - NEW YORK HOSPITAL LABORATORIES		119	6	5%	125
QUALITOX LABORATORIES		96	27	22%	123
MILLENNIUM PATHOLOGY/MICROBIOLOGY LABORATORY			120	100%	120
UNITED CLINICAL LABORATORY LLC		2	117	98%	119
LEHIGH REGIONAL MEDICAL CENTER LAB		105	13	11%	118
GESSLER CLINIC			117	100%	117
PALM BEACH COUNTY HEALTH DEPT LAB		112	2	2%	114
MOLECULAR INFECTIOUS DISEASES		110	3	3%	113
ALLIED HEALTH FORT PIERCE		112			112
AVECINA MEDICAL JULINGTON		24	87	78%	111
INTEGRATED REGIONAL LABORATORIES		99	11	10%	110
ASAP LAB LLC		90	20	18%	110
VETERANS AFFAIRS MEDICAL CENTER LAB		1	109	99%	110
MILLENNIUM LAB SERVICES			106	100%	106
WUESTHOFF REF LABORATORY			106	100%	106
MEDICAL DIAGNOSTICS LABORATORIES,INC		17	89	84%	106
ADVENT HEALTH DAYTONA		1	101	99%	102
CENTRA CARE		1	100	99%	101
TEMPUS CLINICAL LABORATORY		86	13	13%	99
NEW YORK STATE ELR - ENZO CLINICAL LABS INC		97	1	1%	98
STEWART REFERENCE LABORATORY			97	100%	97
BIOCERNA LABS	6	53	37	39%	96
ACUTIS DIAGNOSTICS	1	79	16	17%	96
SPARROW HEALTHCARE		1	95	99%	96
IRL MARKET LAB		60	34	36%	94
ROSEN MEDICAL CENTER		86	7	8%	93
DIAGNOSTIC SOLUTIONS		3	90	97%	93
ST JUDE CHILDREN'S RESEARCH HOSPITAL		81	11	12%	92
USAFSAM/PHE		23	69	75%	92
MICROGEN DX		1	91	99%	92
CURATIVE LABS INC		12	80	87%	92
C.W. BILL YOUNG VA MEDICAL CENTER		3	87	97%	90
UR MEDICINE LABS- CENTRAL LABORATORY		88	2	2%	90
SANTA ROSA MEDICAL CENTER		1	88	99%	89
LEON MEDICAL CENTER		1	88	99%	89
GENETWORKX		15	72	83%	87
CENTRACARE		1	84	99%	85
FLORIDA HOSPITAL HEARTLAND MED CTR LAKE PLACID		62	22	26%	84
MARTIN MEMORIAL MEDICAL CENTER LAB		12	71	86%	83

COVID-19: testing by laboratory

Data through Jul 28, 2020 verified as of Jul 29, 2020 at 09:25 AM

Data in this report are provisional and subject to change.

The numbers in the table below represent the number for whom test results were received by the Department of Health. A person can be tested by more than one laboratory and can have both positive and negative results. **Therefore, the sum of the numbers in each column will be larger than the total number of people tested.**

Reporting lab	Inconclusive	Negative	Positive	Percent positive	Total
VAMC BAY PINES		1	80	99%	81
FLORIDA WOMAN CARE LABORATORY LLC		65	15	19%	80
AMERICAN PATHOLOGY PARTNERS		77	1	1%	78
MAVERICK LABS		8	70	90%	78
BAPTIST HEALTH SOUTH FLORIDA		4	69	95%	73
FLORIDA COMMUNITY HEALTH CENTERS INC			72	100%	72
MAYO CLINIC LABS - ROCHESTER MAIN CAMPUS		71	1	1%	72
GARCIA CLINICAL LABORATORY		1	69	99%	70
Highlands Regional Hospital		63	6	9%	69
AMELIA URGENT CARE		3	65	96%	68
REAL DIAGNOSTIC	1	40	26	39%	67
AEL- MEMPHIS		17	50	75%	67
QPS, LLC		66	1	1%	67
CENTRAL FLORIDA HEALTH CARE		46	21	31%	67
AVERO DIAGNOSTICS		51	15	23%	66
LABCORP BURLINGTON (LPP)		16	50	76%	66
VAMC LAKE CITY		51	13	20%	64
FAST TRACK URGENT CARE CENTER			62	100%	62
PHAROS HEALTH		3	59	95%	62
DAVITA LABORATORY SERVICES		48	14	23%	62
HOLY CROSS HOSPITAL		1	61	98%	62
ORLANDO VA PALMS		2	56	97%	58
FINLAY CLINICAL LABORATORY		24	34	59%	58
PRIVA PATH LABS			58	100%	58
PACIFIC ANALYTICS			57	100%	57
HEALTH FIRST-HOLMES REGIONAL			57	100%	57
SACRED HEART HOSPITAL ON THE GULF		27	29	52%	56
GENE BY GENE			55	100%	55
HOSPITAL FOR SPECIAL SURGERY		54	1	2%	55
NAVY HOSPITAL			54	100%	54
BROWARD HEALTH MEDICAL CENTER		1	53	98%	54
ADVENTHEALTH CENTRA CARE OVIEDO		19	35	65%	54
NEW YORK STATE ELR - WADSWORTH HEALTH CENTER		49	3	6%	52
PREMIER MEDICAL LABORATORY SERVICES			52	100%	52
SARASOTA CO. HEALTH DEPT # 58		40	11	22%	51
TOM LEE COMMUNITY HEALTH CENTER		1	50	98%	51
INTEGRITY LABORATORIES			49	100%	49
MILLENIUM PHYSICIANS GROUP			49	100%	49
P4 DIAGNOSTIX LABORATORY NETWORK		1	48	98%	49
FULGENT DIAGNOSTICS	3	38	7	15%	48
ARTHREX MEDICAL CENTER		28	20	42%	48
CLINICAL REFERENCE LABORATORY		43	4	9%	47
ARCPOINT LABS OF WEST PALM BEACH			47	100%	47
BAYCARE LAB		1	45	98%	46
HURLBURT FIELD CLINIC		23	23	50%	46
H LEE MOFFITT CANCER CENTER MICRO		46			46
VHA PUBLIC HEALTH REFERENCE LABORATORY- PALO ALTO		27	19	41%	46

COVID-19: testing by laboratory

Data through Jul 28, 2020 verified as of Jul 29, 2020 at 09:25 AM

Data in this report are provisional and subject to change.

The numbers in the table below represent the number for whom test results were received by the Department of Health. A person can be tested by more than one laboratory and can have both positive and negative results. **Therefore, the sum of the numbers in each column will be larger than the total number of people tested.**

Reporting lab	Inconclusive	Negative	Positive	Percent positive	Total
VAMC GAINESVILLE		2	43	96%	45
BAYCARE HEALTH SYSTEM		1	44	98%	45
BIOREFERENCE LABORATORY		1	44	98%	45
MID-FLORIDA PATHOLOGY		23	21	48%	44
NEW YORK STATE ELR - EMPIRECITY LABORATORIES		37	6	14%	43
DYNAMIC MEDICAL USA			43	100%	43
BAYFRONT HEALTH BROOKSVILLE			42	100%	42
MORTON PLANT HOSPITAL			41	100%	41
QUEST TAMPA (NEW YORK ELR)		32	9	22%	41
DEPARTMENT OF VETERANS AFFAIRS JAMES A. HALEY VETERANS HOSPITAL			40	100%	40
SMA MEDICAL LABORATORY		8	32	80%	40
ALL CHILDREN'S HOSPITAL LAB		1	39	98%	40
FISHERMENS HOSPITAL CLINICAL LAB		37	2	5%	39
FLORIDA HOSPITAL NEW SMYRNA		4	35	90%	39
FLORIDA CLINICAL LABORATORY-BIOREFERENCE LABORATORIES		2	37	95%	39
EGLIN REGIONAL MEDICAL CENTER		4	35	90%	39
RCA LABORATORY SERVICES, LLC		8	30	79%	38
SOLARIS DIAGNOSTICS		2	36	95%	38
USA HEALTH UNIVERSITY HOSPITAL CLINICAL LABORATORY		36	1	3%	37
PROVIDENCE HOSPITAL LABORATORY		36	1	3%	37
ADVENT HEALTH CENTRA CARE: WATERFORD LAKES		3	33	92%	36
REFUAH HEALTH CENTER LABORATORY		36			36
ST. CLOUD MEDICAL GROUP		35			35
IRL		4	31	89%	35
NEW YORK STATE ELR - KALEIDA HEALTH CENTER FOR LABORATORY		31	4	11%	35
AMELIA EXPRESS CARE		1	34	97%	35
TALLAHASSEE PRIMARY CARE ASSOCIATES		30	4	12%	34
325TH MEDICAL GROUP			34	100%	34
LAB CORP RTP	1	2	31	91%	34
VA MEDICAL CENTER		7	26	79%	33
DESOTO MEMORIAL HOSPITAL LAB			33	100%	33
LAB CORP TAMPA			33	100%	33
NEW YORK STATE ELR - MONTEFIORE MEDICAL CENTER LABORATORIES - MOSES		26	7	21%	33
GENPATH			32	100%	32
CAREMOUNT MEDICAL - PATHOLOGY		32			32
ALL CHILDREN'S HOSPITAL/LAB			32	100%	32
BAYFRONT HEALTH ER PINELLAS PARK		17	15	47%	32
GULF COAST MOLECULAR LABORATORIES		13	19	59%	32
QUEST DIAGNOSTICS-VERO BEACH-37TH ST		31			31
BioReference Laboratories, Inc		21	10	32%	31
ALLSOUTH URGENT CARE			31	100%	31
LABCORP BIRMINGHAM		4	27	87%	31
MEDICAL DIAGNOSTIC LAB		1	30	97%	31
UNKNOWN - BAD FACILITY CODE		2	28	93%	30
EAST MANATEE FAMILY	1		29	97%	30
EXACT SCIENCES LABORATORIES		30			30
AVELLINO LAB USA, INC		28	2	7%	30

COVID-19: testing by laboratory

Data through Jul 28, 2020 verified as of Jul 29, 2020 at 09:25 AM

Data in this report are provisional and subject to change.

The numbers in the table below represent the number for whom test results were received by the Department of Health. A person can be tested by more than one laboratory and can have both positive and negative results. **Therefore, the sum of the numbers in each column will be larger than the total number of people tested.**

Reporting lab	Inconclusive	Negative	Positive	Percent positive	Total
MOBILE INFIRMARY MED CENTER PATH LAB		27	2	7%	29
FAWCETT MEMORIAL HOSPITAL-LAB		1	28	97%	29
EXPERTUS LABORATORIES INC		9	20	69%	29
CLINICAL RESEARCH SEQUENCING PLATFORM			29	100%	29
MORTON PLANT HOSPITAL/LAB		1	28	97%	29
SEBASTIAN RIVER MEDICAL CENTER		8	21	72%	29
QUEST DIAGNOSTIC INC	1	3	24	86%	28
NAVAL HOSPITAL - JACKSONVILLE		1	27	96%	28
P4CLINICAL	3	2	23	82%	28
HUNTSVILLE HOSPITAL LABORATORY		21	7	25%	28
SOUTH LAKE HOSPITAL		1	27	96%	28
FULGENT GENETICS	1	11	16	57%	28
FINLAY CLINICAL LABORATORY INC		26	1	4%	27
TAMPA GENERAL HOSPITAL CLINICAL LAB			27	100%	27
ST VINCENT'S BIRMINGHAM LABORATORY		27			27
NIGHT LITE PEDIATRICS URGENT CARE		3	24	89%	27
HEALTH FIRST-PALM BAY			27	100%	27
TRADITION MEDICAL CENTER LABORATORY		7	20	74%	27
INTERLAB		1	25	96%	26
ADVENT HEALTH CENTRA CARE LONGWOOD			26	100%	26
AMERICAN RESEARCH LABS		1	25	96%	26
ACCU REFERENCE MEDICAL LAB			26	100%	26
CDC		17	9	35%	26
SUNCOAST LABS			26	100%	26
LABFIRST - DEPARTMENT OF PATHOLOGY		26			26
Quest Diag Unspecifd		4	21	84%	25
CAPITAL REGIONAL MEDICAL CENTER		1	24	96%	25
ST JOSEPHS CHILDRENS OUTREACH			25	100%	25
NEW YORK STATE ELR - WHITE PLAINS HOSPITAL CENTER LAB		25			25
QUEST DIAGNOSTICS NICHOLS INSTITUTE- LPP		3	21	88%	24
QDX PATHOLOGY SERVICES		14	10	42%	24
LABORATORY CORP OF AMERICA	1	5	18	75%	24
GENESIS LABORATORY MANAGEMENT			24	100%	24
ORLANDO REGIONAL MEDICAL CENTER		1	23	96%	24
NEW YORK STATE ELR - STONY BROOK UNIVERSITY MEDICAL CENTER		21	3	13%	24
UNITED CLINICAL LABS			24	100%	24
MY CLINICAL LAB			24	100%	24
BAYFRONT		21	2	9%	23
MACDILL AIRFORCE BASE MICRO		20	3	13%	23
NEW PLANT CITY FAMILY CARE		2	21	91%	23
LABORATORY DYNAMICS		20	3	13%	23
JACKSON MEMORIAL HOSPITAL		1	22	96%	23
CAPE CANAVERAL HOSPITAL			22	100%	22
CHILDREN'S HOSPITAL OF ALABAMA		22			22
US BIOTEK LABORATORIES			22	100%	22
MIAMI VAMC			22	100%	22
QUEST DIAGNOSTICS INC.			22	100%	22

COVID-19: testing by laboratory

Data through Jul 28, 2020 verified as of Jul 29, 2020 at 09:25 AM

Data in this report are provisional and subject to change.

The numbers in the table below represent the number for whom test results were received by the Department of Health. A person can be tested by more than one laboratory and can have both positive and negative results. **Therefore, the sum of the numbers in each column will be larger than the total number of people tested.**

Reporting lab	Inconclusive	Negative	Positive	Percent positive	Total
PENNSYLVANIA DEPT OF HEALTH		19	3	14%	22
GRAVITY DIAGNOSTICS		14	8	36%	22
ST. ANTHONY'S HOSPITAL			22	100%	22
ASSOCIATED CLINICAL LABORATORIES		20	1	5%	21
NEW YORK STATE ELR - QUEST DIAGNOSTICS NICHOLS LAB		19	2	10%	21
NEW YORK STATE ELR - NEWYORK-PRESBYTERIAN/QUEENS DIAGNOSTIC		20	1	5%	21
POPLAR HEALTHCARE PLLC	1	10	10	48%	21
NEW YORK STATE ELR - CATHOLIC HEALTH SYSTEM DEPT LABORATORY		21			21
PATRICK AIR FORCE BASE		1	20	95%	21
MIAMI BEACH COMMUNITY HEALTH CENTER			20	100%	20
BROWARD HEALTH CORAL SPRINGS EPIDEMIOLOGY DEPT			20	100%	20
ST. MARY'S MEDICAL CENTER LAB			20	100%	20
ST. CLOUD HOSPITAL		20			20
LABORATORY SPECIALISTS OF MICHIGAN			20	100%	20
MACDILL AFB HOSPITAL		14	6	30%	20
ADVENT HEALTH FISH MEMORIAL		2	17	89%	19
KENDALL REGIONAL MEDICAL CENTER LAB			19	100%	19
MED HEALTH SERVICES		18	1	5%	19
SANFORD LABORATORIES		19			19
INTEGRATED REGIONAL LABORATORIES - LARGO			19	100%	19
LAB PLUS, LLC AT SAINT THOMAS WEST HOSPITAL		11	8	42%	19
VA		15	4	21%	19
INTERCOASTAL MEDICAL GROUP			18	100%	18
HEALTHLINK DIAGNOSTIC LABORATORIES		1	17	94%	18
STONE WASH CLINICAL LABORATORIES		2	16	89%	18
ASSOCIATED PATHOLOGISTS		15	3	17%	18
CITRUS MEMORIAL HEALTH SYSTEM LAB		1	17	94%	18
PATHGROUP LABS			18	100%	18
MED ARBOR			18	100%	18
ST. JOSEPH HOSPITAL LAB			18	100%	18
RDX BIOSCIENCE,			17	100%	17
VIERA HOSPITAL			17	100%	17
PALO ALTO VA MEDICAL CENTER		1	16	94%	17
CORE DIAGNOSTIC LABORATORIES			17	100%	17
ARCPOINT LABS OF TAMPA		1	16	94%	17
PALM BAY HOSPITAL		1	16	94%	17
ARUP		4	13	76%	17
SMA SPECIALTY MEDICAL LAB			17	100%	17
CLEVELAND CLINIC FOUNDATION		9	8	47%	17
UNIVERSITY HEALTH SYSTEM INC		15	2	12%	17
WATSON CLINIC LLP SOUTH			17	100%	17
MIAMI VA HEALTHCARE SYSTEM			17	100%	17
NEW YORK STATE ELR - UNIVERSITY HOSPITAL, STONY BROOK SOUTHAMPTON		17			17
NEW YORK STATE ELR - BROOKDALE UNIVERSITY HOSPITAL		16			16
SHORELINE PHYSICIAN GROUP			16	100%	16
FIRST CHOICE URGENT CARE			16	100%	16

COVID-19: testing by laboratory

Data through Jul 28, 2020 verified as of Jul 29, 2020 at 09:25 AM

Data in this report are provisional and subject to change.

The numbers in the table below represent the number for whom test results were received by the Department of Health. A person can be tested by more than one laboratory and can have both positive and negative results. **Therefore, the sum of the numbers in each column will be larger than the total number of people tested.**

Reporting lab	Inconclusive	Negative	Positive	Percent positive	Total
TGH		1	15	94%	16
PATIENTS FIRST LAKE ELLA MEDICAL CENTER PA			16	100%	16
PARRISH MEDICAL CENTER		1	15	94%	16
MADISON CORE LABORATORIES		15	1	6%	16
LABCORP INC		2	13	87%	15
NXGEN MDX		11	4	27%	15
SMA LAB		3	12	80%	15
CENTRA CARE CONWAY			15	100%	15
SEVEN RIVERS REGIONAL MEDICAL CENTER		4	11	73%	15
NEW YORK STATE ELR - WILSON MEMORIAL REGIONAL MEDICAL CENTER		14	1	7%	15
NEW YORK STATE ELR - WESTCHESTER MEDICAL CENTER		15			15
FLORIDA DEPARTMENT OF HEALTH		10	5	33%	15
DIATHERIX		13	2	13%	15
GENESIS DIAGNOSTICS			15	100%	15
QUEST DIAGNOSTICS INCORPORATED			15	100%	15
PHYSICIANS REGIONAL HEALTHCARE SYSTEM			15	100%	15
PRIDE DIAGNOSTICS		13	2	13%	15
QUESTDIAGNOSTICS INCORPORATED		1	14	93%	15
IPSUM DIAGNOSTICS			15	100%	15
QUEST DIAGNOSTICS NICHOLS INSTITUTE - SJC (LPP)		10	5	33%	15
LECONTE MEDICAL CENTER LAB		12	3	20%	15
DOCTORS MEMORIAL HOSPITAL		7	8	53%	15
TIDE LABORATORIES		4	10	71%	14
SUNTREE INTERNAL MEDICINE		14			14
OUT OF STATE		14			14
HEALTH CENTRAL HOSPITAL			14	100%	14
GRAVITY DIAGNOSTICS, LLC		5	9	64%	14
BIO REFERNCE LABORATORIES		3	11	79%	14
MILLENNIUM PHYSICIAN GROUP LCC			14	100%	14
ST. JOSEPHS HOSPITAL			13	100%	13
NEW YORK STATE ELR - ROCHESTER GENERAL HOSPITAL LABORATORY		12	1	8%	13
CAYUGA MEDICAL CENTER AT ITHACA		11	2	15%	13
JACKSON HEALTH SYSTEM			13	100%	13
MEDCOMP SCIENCES			13	100%	13
BAPTIST SOUTH MEDICAL CENTER		2	11	85%	13
SCIONLAB SERVICES LLC		11	2	15%	13
VENICE REGIONAL MEDICAL LAB SERVICES			13	100%	13
XERA MED RESEARCH			13	100%	13
NORTH SHORE UNIVERSITY HOSPITAL LABORATORY		12	1	8%	13
DEPARTMENT OF VETERANS AFFAIRS MEDICAL CENTER			12	100%	12
ST FRANCIS HOSPITAL		9	3	25%	12
BAY MEDICAL CENTER SACRED HEART HEALTH SYSTEM			12	100%	12
ADVANCED URGENT CARE		10	2	17%	12
BIO-REFERENCE LABORATORIES			12	100%	12
DOH		1	11	92%	12
DIAGNOSTIC LABORATORY OF OKLAHOMA		12			12
BROWARD DIALYSIS			12	100%	12

COVID-19: testing by laboratory

Data through Jul 28, 2020 verified as of Jul 29, 2020 at 09:25 AM

Data in this report are provisional and subject to change.

The numbers in the table below represent the number for whom test results were received by the Department of Health. A person can be tested by more than one laboratory and can have both positive and negative results. **Therefore, the sum of the numbers in each column will be larger than the total number of people tested.**

Reporting lab	Inconclusive	Negative	Positive	Percent positive	Total
PROTEUS MOLECULAR AND CLINICAL LAB		8	4	33%	12
EMERGENCY PHYSICIANS MEDICAL CENTER			12	100%	12
WHITE WILSON MEDICAL CENTER CLINIC			12	100%	12
WUESTHOFF MEDICAL CENTER-MELBOURNE			12	100%	12
SELECT LABORATORIES MARION COUNTY, LLC.			12	100%	12
TOTAL RENAL LABORATORIES INC		7	5	42%	12
NEW YORK STATE ELR - QUEST DIAGNOSTICS INCORPORATED		9	3	25%	12
NEW YORK STATE ELR - LENOX HILL HOSPITAL		11	1	8%	12
FLORIDA DEPT OF HEALTH		4	8	67%	12
PARK WEST MEDICAL CENTER		11	1	8%	12
AMERICAN ESOTERIC LABORATORIES			11	100%	11
CLARITY LAB SOLUTIONS		3	8	73%	11
BAPTIST CLAY			11	100%	11
CBS LABORATORY		1	10	91%	11
DOCTOR'S MEMORIAL HOSPITAL			11	100%	11
HEALTH FIRST-VIERA HOSPITAL			11	100%	11
MOLECULAR TESTING LABS			11	100%	11
DELRAY MEDICAL CENTER LAB			11	100%	11
FLORIDA COMMUNITY HEALTH CENTER OF ST. LUCIE			11	100%	11
SUNQUEST		2	9	82%	11
AURORA DIAGNOSTICS BERNHARDT LABORATORIES PATHOLOGY SERVICE		11			11
INDIAN RIVER MEDICAL CENTER		11			11
LAB INTERMARKET FACILITY LAB			11	100%	11
ESCAMBIA COMMUNITY CLINIC			11	100%	11
MOFFITT CANCER CENTER		9	2	18%	11
LABCORP - CLEARWATER		3	8	73%	11
MEDICAL LABORATORY DIAGNOSTICS			10	100%	10
NEW JERSEY DEPARTMENT OF HEALTH COMMUNICABLE DISEASE SERVICE		3	7	70%	10
HEALTH FIRST CAPE CANAVERAL HOSPITAL			10	100%	10
FLORIDA MEDICAL CLINIC			10	100%	10
VENICE REGIONAL MEDICAL CENTER			10	100%	10
LAKE BALDWIN CBOC		9	1	10%	10
NORTH OKALOOSA MEDICAL CENTER			10	100%	10
UPMC CHAUTAUQUA AT WCA LABORATORY		10			10
LABCORP - MIAMI		4	6	60%	10
SELECT REFERENCE LABORATORIES, LLC			10	100%	10
BROWARD HEALTH CARE			10	100%	10
UVMCM MICROBIOLOGY		10			10
PARKWEST MEDICAL CENTER		9	1	10%	10
BAYCARE OUTREACH LABORATORY SERVICES		1	9	90%	10
JEFFERY WEINZWEIG			9	100%	9
MICHIGAN DEPARTMENT OF HEALTH AND HUMAN SERVICES			9	100%	9
JACKSON NORTH MEDICAL CENTER		1	8	89%	9
NEW YORK STATE ELR - CATHOLIC HEALTH SERVICES REGIONAL LABORATORY		7	2	22%	9
PERSONALIZED GENETIC TESTING			9	100%	9
FLORIDA HOSPITAL LABS			9	100%	9
WESTPAC LABS			9	100%	9

COVID-19: testing by laboratory

Data through Jul 28, 2020 verified as of Jul 29, 2020 at 09:25 AM

Data in this report are provisional and subject to change.

The numbers in the table below represent the number for whom test results were received by the Department of Health. A person can be tested by more than one laboratory and can have both positive and negative results. **Therefore, the sum of the numbers in each column will be larger than the total number of people tested.**

Reporting lab	Inconclusive	Negative	Positive	Percent positive	Total
EAST ALABAMA MEDICAL CENTER LABORATORY		6	3	33%	9
VAMC			9	100%	9
QUEST INFECTIOUS DISEASE	1	4	4	44%	9
NEW YORK STATE ELR - BRONX LEBANON HOSPITAL-MEDICAL CENTER		8	1	11%	9
REDITUS LABORATORIES			9	100%	9
CORE LABORATORY		1	8	89%	9
ST MARY'S MEDICAL CENTER		1	7	88%	8
ST VINCENTS MEDICAL CENTER RIVERSIDE NURSING			8	100%	8
SPORTS DRUG TESTING LABORATORY			8	100%	8
ST JOSEPH'S HEALTHLINE		1	7	88%	8
ADVENTHEALTH PALM COAST			8	100%	8
POARCH BANC CREEK INDIANS TRIBAL HEALTH DEPARTMENT			8	100%	8
UMHC/SYLVESTER AT KENDALL		1	7	88%	8
ST JOSEPHS HOSPITAL			8	100%	8
STATE LAB		1	7	88%	8
CENTRA CARE – SAND LAKE			8	100%	8
HUNTINGTON HOSPITAL LABORATORY		7	1	13%	8
BOND CLINIC			8	100%	8
DEVANSH LAB WERKS INC		6	2	25%	8
NEW YORK STATE ELR - NORTH CENTRAL BRONX HOSP		7	1	13%	8
DOCTOR'S IN HOUSE LAB			8	100%	8
NEXT MOLECULAR ANALYTICS			8	100%	8
NEW YORK STATE ELR - JAMES J PETERS VA MEDICAL CENTER		6	2	25%	8
NEW YORK STATE ELR - GOOD SAMARITAN HOSPITAL LABORATORY		8			8
PRECISION HEALTH SOLUTIONS LAB			8	100%	8
THE COMMONWEALTH OF MASSACHUSETTS			8	100%	8
CONSOLIDATED LAB SERVICES		8			8
NEW YORK STATE ELR - SARATOGA HOSPITAL LABORATORY		8			8
MINUTE CLINIC INCORPORATE		7	1	13%	8
BAYFRONT HEALTH SPRING HILL			8	100%	8
NORTH CAROLINA DEPARTMENT OF HEALTH & HUMAN SERVICES			8	100%	8
MAYO CLINIC DEPT OF LAB MED PATHOLOGY			8	100%	8
GENEUS DIAGNOSTICS			8	100%	8
BAYONET POINT MEDICAL CENTER			7	100%	7
BIOFIRE			7	100%	7
Diatherix Laboratories, LLC		1	6	86%	7
SYLVESTER AT PLANTATION LABORATORY		6	1	14%	7
NO NAME		5	2	29%	7
SOUTHEAST ALABAMA MEDICAL CENTER			7	100%	7
LAKE CITY VETERANS HOSPITAL			7	100%	7
BOCA BIOLISTICS REFERENCE LABORATORY			7	100%	7
FLORIDA DEPARTMENT OF HEALTH IN LAKE COUNTY		3	4	57%	7
NEW YORK STATE ELR - ST PETER'S BENDER LABORATORY		7			7
CLINICAL PATHOLOGY LABORATORIES, INC.			7	100%	7
NORTHWELL HEALTH PLAINVIEW HOSPITAL LABORATORY		5	2	29%	7
X-GENE MOLECULAR LABS		1	6	86%	7
LONGLEAF DIAGNOSTIC LABORATORIES		2	5	71%	7

COVID-19: testing by laboratory

Data through Jul 28, 2020 verified as of Jul 29, 2020 at 09:25 AM

Data in this report are provisional and subject to change.

The numbers in the table below represent the number for whom test results were received by the Department of Health. A person can be tested by more than one laboratory and can have both positive and negative results. **Therefore, the sum of the numbers in each column will be larger than the total number of people tested.**

Reporting lab	Inconclusive	Negative	Positive	Percent positive	Total
SOUTHEAST FAMILY HEALTHCARE CENTER			7	100%	7
PROMEDICA LABORITORIES		7			7
WOLFSON CHILDREN'S HOSPITAL			7	100%	7
NEW YORK STATE ELR - VASSAR BROTHERS MEDICAL CENTER LABORATORY		7			7
ORMOND BEACH CENTRA CARE			7	100%	7
PRATTVILLE BAPTIST HOSPITAL		6	1	14%	7
TYNDALL AFB			7	100%	7
NEW YORK STATE ELR - ERIE COUNTY MEDICAL CTR CLINICAL LABS		7			7
DYNAMIC DNA LAB			7	100%	7
BAYFRONT HEALTH PORT CHARLOTTE			7	100%	7
AMERICAN HEALTH ASSOCIATES OF TAMPA			7	100%	7
ST CATHERINE OF SIENA HOSPITAL		7			7
WATSON CLINIC LLP MAIN			7	100%	7
NORTH BAY HOSPITAL			7	100%	7
QUEST DIAGNOSTICS-N ST PETERSBURG-5TH			6	100%	6
BAYCARE LABORATORIES			6	100%	6
SACRED HEART HEALTH SYSTEM			6	100%	6
SOUTH SEMINOLE HOSPITAL		1	5	83%	6
CREATIVE TESTING SOLUTIONS			6	100%	6
UNIVERSITY HOSPITAL - STONY BROOK EASTERN		6			6
TRUE HEALTH DIAGNOSTICS		1	5	83%	6
ADVENTHEALTH CENTRA CARE ORMOND BEACH			6	100%	6
MICHIGAN DEPARTMENT OF COMMUNITY HEALTH		1	5	83%	6
FLORIDA DEPARTMENT OF HEALTH IN HILLSBOROUGH COUNTY			6	100%	6
ADVENT HEALTH SEBRING			6	100%	6
NEW YORK STATE ELR - JAMAICA HOSPITAL MEDICAL CENTER		6			6
PENSACOLA PEDIATRICS			6	100%	6
CANTON-POTSDAM HOSPITAL LABORATORY		6			6
HIGHLANDS MEDICAL CENTER		6			6
TRUGENX			6	100%	6
LEE MEMORIAL LAB GULF COAST			6	100%	6
LABCORP OF AMERICA		2	4	67%	6
CONNECTICUT DEPARTMENT OF HEALTH		5	1	17%	6
ST VINCENT'S EAST LABORATORY		6			6
CLEVELAND CLINIC			6	100%	6
ST JOSEPH HOSPITAL		5	1	17%	6
HEALTHMARK REGIONAL HOSPITAL LAB		2	4	67%	6
ROCKLEDGE			6	100%	6
ARCHBOLD MEMORIAL HOSPITAL/LAB		3	3	50%	6
FLORIDA CLINICAL LAB			6	100%	6
LEE COUNTY HEALTH DEPARTMENT		4	2	33%	6
PATHOGENIUS LABORATORIES		2	4	67%	6
SHELBY COUNTY HEALTH CARE CORPORATION		4	2	33%	6
NEW YORK STATE ELR - LOURDES HOSPITAL INC		6			6
LABCORP NEW PORT RICHEY			6	100%	6
ST. JOSEPH'S HOSPITAL LAB			6	100%	6
XPRESS WELLNESS URGENT CARE			5	100%	5

COVID-19: testing by laboratory

Data through Jul 28, 2020 verified as of Jul 29, 2020 at 09:25 AM

Data in this report are provisional and subject to change.

The numbers in the table below represent the number for whom test results were received by the Department of Health. A person can be tested by more than one laboratory and can have both positive and negative results. **Therefore, the sum of the numbers in each column will be larger than the total number of people tested.**

Reporting lab	Inconclusive	Negative	Positive	Percent positive	Total
Cleveland Clinic Laboratories		1	4	80%	5
ST ANTHONY NORTH			5	100%	5
SPECIALITY LABORATORIES,INC		4	1	20%	5
UPMC HEALTH SYSTEM		4	1	20%	5
XRL SXF REF LAB		5			5
LABCORP - NAPLES			5	100%	5
AMELIA MEDICAL CARE			5	100%	5
BROOKWOOD BAPTIST MEDICAL CENTER		5			5
MONTEFIORE NEW ROCHELLE HOSPITAL		5			5
NORTH FLORIDA PEDIATRICS		1	4	80%	5
PALM BEACH PATHOLOGY		4	1	20%	5
JFK MEDICAL CENTER NORTH LAB			5	100%	5
NIGHT LITE PEDIATRICS WINTER GARDEN		3	2	40%	5
UNKNOWN LAB			5	100%	5
TAMIAMI LAB MILLENNIUM			5	100%	5
NEW YORK PRESBYTERIAN - ALLEN HOSPITAL		5			5
NORTH FLORIDA PEDIATRICS-LAKE CITY			5	100%	5
MAGNOLIA DIAGNOSTIC			5	100%	5
AEL KNOXVILLE			5	100%	5
MINUTECLINIC DIAGNOSTIC OF RHODE ISLAND, LLC #729		4	1	20%	5
NEW YORK STATE ELR - HUDSON VALLEY HOSPITAL CENTER LABORATORY		4	1	20%	5
BAY PINES VA		1	4	80%	5
ADVENT HEALTH CENTRA CARE		1	4	80%	5
CHILDREN'S HOSPITAL OF PHILADELPHIA		5			5
NEW YORK STATE ELR - LABORATORY ALLIANCE OF CENTRAL NEW		5			5
ST ELIZABETH MEDICAL CENTER LABORATORY		5			5
BIOTECH			5	100%	5
DOH JACKSONVILLE CENTRAL LABORATORY		3	2	40%	5
LABCORP BURLINGTON CYTO		4	1	20%	5
FLOWERS HOSPITAL		1	4	80%	5
FRANCES WARDE MEDICAL LABORATORY		2	3	60%	5
ARNOT OGDEN MEDICAL CENTER LABORATORY		5			5
PECONIC BAY MEDICAL CENTER LABORATORY		4	1	20%	5
BOCA RATON REGIONAL HOSPITAL LAB			5	100%	5
BROWARD COUNTY HEALTH DEPT.			5	100%	5
THE VILLAGES CLINICAL LAB		4	1	20%	5
CHEMISYS LABORATORIES			5	100%	5
LAKELAND REGIONAL HEALTH			4	100%	4
OKLAHOMA STATE UNIVERSITY DIAGNOSTIC LAB			4	100%	4
LABORATORY OF FLORIDA			4	100%	4
PEDIATRIC HEALTH CARE ALLIANCE			4	100%	4
PRECISION LABS LLC		1	3	75%	4
MEDLOGIC, LLC		1	3	75%	4
MERCY HOSPITAL MIAMI LAB			4	100%	4
MISSOURI DEPARTMENT OF HEALTH AND SENIOR SERVICES			4	100%	4
QUEST DIAGNOSTICS- MELBOURNE			4	100%	4
LAWTON CHILES HEALTH CENTER			4	100%	4

COVID-19: testing by laboratory

Data through Jul 28, 2020 verified as of Jul 29, 2020 at 09:25 AM

Data in this report are provisional and subject to change.

The numbers in the table below represent the number for whom test results were received by the Department of Health. A person can be tested by more than one laboratory and can have both positive and negative results. **Therefore, the sum of the numbers in each column will be larger than the total number of people tested.**

Reporting lab	Inconclusive	Negative	Positive	Percent positive	Total
NEW YORK STATE ELR - BROOKLYN HOSPITAL CENTER DOWNTOWN CAMPUS		4			4
METROPOLITAN HOSPITAL CENTER		4			4
DAVITA LABORATORY		4			4
FINLAY C. LABORATORY		3	1	25%	4
COMMUNITY HEALTH OF SOUTH FLORIDA			4	100%	4
THE CENTER FOR URGENT CARE		3	1	25%	4
EXPRESS TESTING-ONE			4	100%	4
STATEN ISLAND UNIVERSITY HOSPITAL SEGUINE AVE		4			4
COVENIENT CARE MEDICAL CLINIC			4	100%	4
LINCOLN MEDICAL AND MENTAL HEALTH CENTER		4			4
SOUTHWESTERN REGIONAL MEDICAL CENTER - TULSA		4			4
DTR LABS		3	1	25%	4
DCH REGIONAL MEDICAL CENTER LABORATORY		4			4
STATEN ISLAND UNIVERSITY HOSPITAL-POUCH		4			4
MAYO CLINIC LABS - ROCHESTER SUPERIOR DRIVE			4	100%	4
QUEST DIAGNOSTIC INC TECHINICAL			4	100%	4
WINTER HAVEN HOSPITAL			4	100%	4
DALE MEDICAL CENTER		2	2	50%	4
BEAUMONT LABORATORY			4	100%	4
BAY CARE			4	100%	4
NEW YORK STATE ELR - SOUTHSIDE HOSPITAL NORTHWELL HEALTH LABORATORY		3	1	25%	4
FLORIDA WOMAN CARE LABORATORY			4	100%	4
ADVENT HEALTH -TAMPA			4	100%	4
SUNCOAST COMMUNITY HEALTH CENTERS PEDIATRICS			4	100%	4
NORTH FLORIDA/SOUTH GEORGA VETERANS HEALTH SYSTEM			4	100%	4
GENUS DIAGNOSTICS			4	100%	4
LEHIGH VALLEY HOSPITAL		3	1	25%	4
INTERMARKET FACILITY			4	100%	4
LAB CORP OF AMERICA		1	3	75%	4
COLORADO DEPARTMENT OF PUBLIC HEALTH AND ENVIRONMENT			4	100%	4
BLOCK, NATION, CHASE, AND SMOLEN FAMILY MEDICINE			4	100%	4
THOMAS JEFFERSON UNIVERSITY HOSPITAL		4			4
NORTHWEST FLORIDA COMMUNITY HOSPITAL		1	3	75%	4
WUESTHOFF MEMORIAL HOSPITAL			4	100%	4
LAKE WALES MEDICAL CENTER INC			3	100%	3
ILLINOIS DEPARTMENT OF PUBLIC HEALTH			3	100%	3
TAMPA GENERAL HOSPITAL LABORATORY			3	100%	3
JOE DIMAGGIO CHILDREN'S HOSPITAL		1	2	67%	3
MHHS All Lab Subsection		3			3
CENTRA CARE – WATERFORD LAKES			3	100%	3
LABCORP DIAGNOSTICS-MIAMI		2	1	33%	3
BRANCH MEDICAL CLINIC			3	100%	3
GULF COAST MEDICAL GROUP			3	100%	3
KEY PRIMARY CASE			3	100%	3
MIAMI CANCER INSTITUTE			3	100%	3
JACKSON SOUTH COMMUNITY HOSPITAL LAB			3	100%	3
INDIAN RIVER CHD VERO BEACH		2	1	33%	3

COVID-19: testing by laboratory

Data through Jul 28, 2020 verified as of Jul 29, 2020 at 09:25 AM

Data in this report are provisional and subject to change.

The numbers in the table below represent the number for whom test results were received by the Department of Health. A person can be tested by more than one laboratory and can have both positive and negative results. **Therefore, the sum of the numbers in each column will be larger than the total number of people tested.**

Reporting lab	Inconclusive	Negative	Positive	Percent positive	Total
CLINICORE			3	100%	3
NEW YORK STATE ELR - ORANGE REGIONAL MEDICAL CENTER LABORATORY		3			3
LEE MEMORIAL HEALTH PARK LAB			3	100%	3
QUEST DIAGNOSTIC			3	100%	3
BOZEMAN HEALTH DEACONESS HOSPITAL		3			3
STATEN ISLAND UNIVERSITY HOSPITAL		3			3
EMERGENCY MEDICAL CENTER			3	100%	3
PUBLIC HEALTH LAB		3			3
AVELLINO LAB USA INC		3			3
METHODIST MEDICAL CENTER		2	1	33%	3
ST. MARYS MEDICAL CENTER			3	100%	3
VIRTUA VOORHEES HOSPITAL		3			3
NEW YORK STATE ELR - JACOBI MEDICAL CENTER		3			3
PENNSYLVANIA DEPARTMENT OF HEALTH BUREAU OF LABORATORIES			3	100%	3
CENTRAL FLORIDA HEALTH CARE INC			3	100%	3
PALMS WEST HOSPITAL			3	100%	3
NICHOLS INSTITUTE QUEST DIAGNOSTICS		2	1	33%	3
WAKEMED		1	2	67%	3
VA OUTPATIENT			3	100%	3
ST LUKES HOSPITAL LABORATORY		2	1	33%	3
NEW YORK STATE ELR - SAMARITAN HOSPITAL LABORATORY		3			3
TIMBER RIDGE LABORATORY			3	100%	3
DOH-TAMPA BRANCH LABORATORY (MLK BLVD)			3	100%	3
BAYCARE OUTREACH LABORATORY HOSPITAL			3	100%	3
VIRGINIA DIVISION OF CONSOLIDATED LABORATORIES			3	100%	3
KEY WEST URGENT CARE, INC		3			3
BAPTIST MEDICAL CENTER EAST		2	1	33%	3
MARINER'S HOSPITAL			3	100%	3
ACH			3	100%	3
PINELLAS COUNTY HEALTH DEPARTMENT		2	1	33%	3
SAMARITAN MEDICAL CENTER		3			3
NORTH BROWARD HOSPITAL DISTRICT HEALTHCARE FOR THE HOMELESS			3	100%	3
MAYO MEDICAL LABORATORIES		2	1	33%	3
BARONESS ERLANGER HOSPITAL		3			3
ABBOTT			3	100%	3
BAY CARE OCCUPATIONAL CLINIC			3	100%	3
NORTH NAPLES HOSPITAL RESPIRATORY THERAPY DEPARTMENT			3	100%	3
MOLECULAR DIAGNOSTICS			3	100%	3
NEWYORK-PRESBYTERIAN/ LAWRENCE HOSPITAL LABORATORY		3			3
MONTEFIORE ST LUKE'S CORNWALL HOSPITAL		2	1	33%	3
FAMILY HEALTH CENTERS OF SWF LABS			3	100%	3
ASCENSION ST. VINCENT'S PRIMARY CARE			3	100%	3
OPTUM LABS LLC			3	100%	3
DORAL URGENT CARE			3	100%	3
FISHERMEN'S HOSPITAL			3	100%	3
WESLEY CHAPEL INTERNAL MEDICINE AND PEDIATRICS			3	100%	3
IOWA DEPARTMENT OF PUBLIC HEALTH			2	100%	2

COVID-19: testing by laboratory

Data through Jul 28, 2020 verified as of Jul 29, 2020 at 09:25 AM

Data in this report are provisional and subject to change.

The numbers in the table below represent the number for whom test results were received by the Department of Health. A person can be tested by more than one laboratory and can have both positive and negative results. **Therefore, the sum of the numbers in each column will be larger than the total number of people tested.**

Reporting lab	Inconclusive	Negative	Positive	Percent positive	Total
URGENT CARE TCMA			2	100%	2
AMEERAH LABS			2	100%	2
OHIO STATE UNIVERSITY WEXNER MEDICAL CENTER			2	100%	2
ST. JOSEPH REGIONAL MEDICAL CENTER			2	100%	2
NADAL PEDIATRICS - VICTORIA STREET (3385)			2	100%	2
UK HEALTHCARE			2	100%	2
CELERION			2	100%	2
MIDWAY SPECIALTY CARE CENTER			2	100%	2
PHYSICIANS STAT			2	100%	2
SSM HEALTH ST LOUIS MICROBIOLOGY LABORATORY		1	1	50%	2
CORAL GABLES HOSPITAL			2	100%	2
CONEMAUGH MEMORIAL MEDICAL CENTER		2			2
FCHC (OB)-DARWIN SQUARE CTR.			2	100%	2
VIGILINT HEALTHCARE		1	1	50%	2
ALTRU DIAGNOSTICS INC			2	100%	2
DEACONESS HOSPITAL			2	100%	2
SIGNATURE CARE PFLUGERVILLE			2	100%	2
DOCTORS MEMORIAL FAMILY MEDICINE			2	100%	2
RICHMOND UNIVERSITY MEDICAL CENTER		1	1	50%	2
BAYFRONT HEALTH PUNTA GORDA			2	100%	2
BIRMINGHAM VAMC		1	1	50%	2
COASTAL LABORATORIES			2	100%	2
UNIVERSITY OF MIAMI			2	100%	2
FLORIDA HEALTH CARE PLANS			2	100%	2
PREMIER LABORATORY SERVICES, LLC			2	100%	2
PPD			2	100%	2
BFT LAB			2	100%	2
BIO-TECH CLINICAL LABORATORIES			2	100%	2
LABCORP RARITAN		2			2
SHELBY BAPTIST MEDICAL CENTER			2	100%	2
GALEN BAYLOR EXTENSION		2			2
BAYCARE MEDICAL GROUP INC			2	100%	2
IRL MARKET LAB ALACHUA		1	1	50%	2
GEORGIA DEPARTMENT OF PUBLIC HEALTH			2	100%	2
ATLANTIS URGENT CARE			2	100%	2
CALHOUN LIBERTY HOSPITAL			2	100%	2
CENTRA CARE HUNTER'S CREEK			2	100%	2
SPARROW CENTRAL LAB			2	100%	2
KEYS MEDICAL GROUP			2	100%	2
JACKSON LABORATORY OF GENOMIC MEDICINE		2			2
ADVANCED MEDICAL CARE			2	100%	2
PREMIER MEDICAL LABORATORY			2	100%	2
TREASURE COAST COMMUNITY HEALTH			2	100%	2
ALABAMA DEPARTMENT OF PUBLIC HEALTH			2	100%	2
ACHS		2			2
WOODHULL MEDICAL AND MENTAL HEALTH CTR		2			2
JOHN D. ARCHBOLD MEM. HOSPITAL			2	100%	2

COVID-19: testing by laboratory

Data through Jul 28, 2020 verified as of Jul 29, 2020 at 09:25 AM

Data in this report are provisional and subject to change.

The numbers in the table below represent the number for whom test results were received by the Department of Health. A person can be tested by more than one laboratory and can have both positive and negative results. **Therefore, the sum of the numbers in each column will be larger than the total number of people tested.**

Reporting lab	Inconclusive	Negative	Positive	Percent positive	Total
JOHNSON CITY MEDICAL CENTER		1	1	50%	2
LABCORP - LEESBURG			2	100%	2
NEW HAMPSHIRE DEPARTMENT OF HEALTH AND HUMAN SERVICES		1	1	50%	2
GUTHRIE MEDICAL GROUP LABORATORIES		2			2
OKLAHOMA STATE DEPARTMENT OF HEALTH-PUBLIC HEALTH LABORATORY			2	100%	2
EGL GENETIC DIAGNOSTICS		1	1	50%	2
NEW YORK STATE ELR - LONG ISLAND JEWISH VALLEY STREAM		2			2
HEART OF FLORIDA HMA			2	100%	2
MARSHALL MEDICAL CENTER SOUTH LAB		2			2
MONTANA PUBLIC HEALTH LAB			2	100%	2
AMMON LABS			2	100%	2
MEMORIAL SLOAN KETTERING CANCER CENTER		1	1	50%	2
DICKERT			2	100%	2
UC CORAL GABLES			2	100%	2
NEW YORK STATE ELR - NEW YORK CITY DEPARTMENT OF HEALTH & MENTAL		2			2
FLORIDA HOSPITAL			2	100%	2
NAPHCARE, INC.			2	100%	2
NEW HAMPSHIRE PUBLIC HEALTH LABORATORIES		2			2
NEW YORK STATE ELR - COLUMBIA MEMORIAL HOSPITAL LABORATORY		2			2
WALGREENS #5317		2			2
UNIVERSITY HOSPITAL OF BROOKLYN		2			2
UNIVERSITY HOSPITAL			2	100%	2
KETTERING HEALTH			2	100%	2
LABCORP - STUART		1	1	50%	2
AMERICAN FAMILY CARE- ORANGE BEACH			2	100%	2
VIRTUA MEMORIAL HOSPITAL BURLINGTON COUNTY			2	100%	2
Cleveland Clinic Weston			2	100%	2
NEW YORK STATE ELR - AUBURN COMMUNITY HOSPITAL		2			2
CONNECTDX			2	100%	2
TALLAHASSEE MEMORIAL HOSPITAL/MICROBIOLOGY LAB			2	100%	2
Covance Central Laboratory			2	100%	2
AHSE ROP		2			2
INTERNAL MEDICINE ASSOCIATES-DUNELLON			2	100%	2
ST PETERSBURG PEDIATRICS-EAST BAY			2	100%	2
ST CHARLES HOSPITAL LABORATORY		2			2
OHIO DEPARTMENT OF HEALTH LABORATORY		2			2
COLLIER COUNTY HEALTH DEPT.			2	100%	2
NORTHSHORE UNIVERSITY HEALTHSYSTEM EVANSTON HOSPITAL LAB			2	100%	2
LEESBURG REGIONAL MEDICAL CENTER		1	1	50%	2
NEW YORK STATE ELR - GLENS FALLS HOSPITAL DEPARTMENT OF PATHOLOGY		2			2
HOME ACCESS HEALTH			2	100%	2
OMNI			2	100%	2
MALABAR/ADVENT CENTRA CARE			2	100%	2
NOVANT HEALTH INPATIENT CARE			2	100%	2
QUEST DIAGNOSITCS INCORPORATED			2	100%	2
CLINICAL PATHOLOGY LABS		1	1	50%	2
LABCORP - OHIO			2	100%	2

COVID-19: testing by laboratory

Data through Jul 28, 2020 verified as of Jul 29, 2020 at 09:25 AM

Data in this report are provisional and subject to change.

The numbers in the table below represent the number for whom test results were received by the Department of Health. A person can be tested by more than one laboratory and can have both positive and negative results. **Therefore, the sum of the numbers in each column will be larger than the total number of people tested.**

Reporting lab	Inconclusive	Negative	Positive	Percent positive	Total
NORTHERN DUTCHESS HOSPITAL LABORATORY		2			2
LABCORP PHOENIX			2	100%	2
FLORIDA CLINICAL LABORATORY INC			2	100%	2
QUEENS HOSPITAL CENTER		2			2
SARASOTA MEMORIAL MEDICAL URGENT CARE CENTER			2	100%	2
GEISINGER MEDICAL CENTER		2			2
BETH ISRAEL DEACONESS MEDICAL CENTER			2	100%	2
ERIE COUNTY MEDICAL CTR CLINICAL LABS		2			2
SCDHEC BUREAU OF LABORATORIES			2	100%	2
MAILBOX DIAGNOSTICS		1	1	50%	2
ADVENTHEALTH CENTRA CARE SANFORD		1	1	50%	2
SOUTH GEORGIA MEDICAL CENTER			2	100%	2
MAYO			2	100%	2
NEW YORK STATE DEPARTMENT OF HEALTH		1	1	50%	2
MONROE COUNTY HOSPITAL		2			2
UAB			1	100%	1
CBC LAB			1	100%	1
ALVERNO CLINICAL LABORATORIES			1	100%	1
CGH MEDICAL CENTER			1	100%	1
WEST VIRGINIA UNIVERSITY HOSPITALS			1	100%	1
WEST KENDALL HOSPITAL			1	100%	1
INDIAN RIVER CLINICAL LABORATORY, INC.		1			1
INTERMOUNTAIN MEDICAL CENTER			1	100%	1
FLORIDA DEPARTMENT OF HEALTH IN MIAMI DADE COUNTY			1	100%	1
HARDIN MEMORIAL HOSPITAL - HEARTLAND PATHOLOGY CONSULTANTS			1	100%	1
WEST PACIFIC MEDICAL LABORATORY			1	100%	1
WELLINGTON WEST 100176			1	100%	1
MEMORIAL HEALTH UNIVERSITY MEDICAL CENTER			1	100%	1
ONEIDA HEALTHCARE CENTER		1			1
HOLY NAME MEDICAL CENTER		1			1
JOHN HOPKINS MEDICAL LABORATORIES		1			1
JOHN D. ARCHBOLD MEMORIAL HOSPITAL			1	100%	1
KANSAS DEPARTMENT OF HEALTH			1	100%	1
CAROLINAS HEALTHCARE SYSTEM LAB			1	100%	1
NEW YORK STATE ELR - BELLEVUE HOSPITAL CENTER DEPARTMENT		1			1
HEALTH FIRST IBM-UX			1	100%	1
MID FLORIDA CLINICAL LABORATORY			1	100%	1
ALLIANCE LABS @LRMC			1	100%	1
HOUSTON HEALTH DEPARTMENT - BUREAU OF LABORATORY SERVICES			1	100%	1
VERMONT DEPARTMENT OF HEALTH LABORATORY		1			1
INTERNAL LAB			1	100%	1
VA HOSPITAL			1	100%	1
NEBRASKA MEDICAL CENTER			1	100%	1
VA GREATER LOS ANGELES HEALTH CARE SYSTEM			1	100%	1
CELEBRATION HOSPITAL			1	100%	1
GENETRAIT LABORATORIES			1	100%	1
INTERMOUNTAIN CENTRAL LAB			1	100%	1

COVID-19: testing by laboratory

Data through Jul 28, 2020 verified as of Jul 29, 2020 at 09:25 AM

Data in this report are provisional and subject to change.

The numbers in the table below represent the number for whom test results were received by the Department of Health. A person can be tested by more than one laboratory and can have both positive and negative results. **Therefore, the sum of the numbers in each column will be larger than the total number of people tested.**

Reporting lab	Inconclusive	Negative	Positive	Percent positive	Total
NAVAL HOSPITAL OF JACKSONVILLE			1	100%	1
FORT SANDERS REGIONAL LABORATORY		1			1
MD NOW URGENT CARE CENTER INC.			1	100%	1
GRAND VIEW HOSPITAL			1	100%	1
MISSOURI DEPARTMENT OF HEALTH AND SENIOR SERVICES - STATE PH LAB		1			1
CFCH - FROSTPROOF			1	100%	1
UNIVERSITY LAB			1	100%	1
HARTFORD HOSPITAL ANCILLARY LAB		1			1
REFERENCE LABORATORY			1	100%	1
BASCOM PALMER-MICRO LAB			1	100%	1
BEAUFORT MEMORIAL			1	100%	1
DHEC - S.C PUBLIC HEALTH LAB			1	100%	1
LEGACY LABORATORY SERVICES			1	100%	1
CLEVELAND CLINIC OHIO LABORATORIES			1	100%	1
BMC/JACSONVILLE		1			1
BEAUMONT HOSPITAL, GROSSE POINTE			1	100%	1
WILLIAM A HINTON STATE LABORATORY INSTITUTE			1	100%	1
BIOMERIEUX			1	100%	1
FALMOUTH BY THE SEA			1	100%	1
BAPTIST ER TOWN CTR			1	100%	1
DOH-WEST PALM BEACH BRANCH LABORATORY			1	100%	1
BERKSHIRE MEDICAL CENTER			1	100%	1
DUKE HEALTH REGIONAL HOSPITAL			1	100%	1
ONSLOW MEMORIAL HOSPITAL LABORATORY		1			1
EDGAR PRICE FAMILY & CHILDREN HEALTHCARE CENTER			1	100%	1
BAYCARE MEDICAL GROUP			1	100%	1
BAPTIST HEALTH MEDICAL CENTER			1	100%	1
ST VINCENT'S CHILTON		1			1
CENTRA CARE – LAKE NONA			1	100%	1
TPCA CLINICAL LABORATORIES		1			1
ORMC-ARDEN/EOI			1	100%	1
MARINA DEL REY HOSPITAL LAB			1	100%	1
BAPTIST HEALTH EXPRESS CARE AT KEY BISCAYNE			1	100%	1
RIVERSIDE METHODIST HOSPITAL LAB			1	100%	1
SHARP MEMORIAL HOSPITAL MICROBIOLOGY DEPT			1	100%	1
TUFTS MEDICAL CENTER			1	100%	1
DSI LABORATORIES-NAPLES-7TH			1	100%	1
DEPARTMENT OF HEALTH AND HUMAN SERVICES DIVISION OF BEHAVIORAL HEALTH		1			1
ARNOLD PALMER HOSPITAL LABORATORY			1	100%	1
LABCORP - HOLLYWOOD			1	100%	1
TIMPANOGOS REGIONAL HOSPITAL			1	100%	1
HARLEM HOSPITAL CENTER		1			1
STANLY REGIONAL MEDICAL CENTER			1	100%	1
TAMIAMI LAB MILLENIUM			1	100%	1
TAMPA		1			1
MARYLAND DEPARTMENT OF HEALTH AND MENTAL HYGIENE			1	100%	1
ELMHURST MEMORIAL HOSPITAL			1	100%	1

COVID-19: testing by laboratory

Data through Jul 28, 2020 verified as of Jul 29, 2020 at 09:25 AM

Data in this report are provisional and subject to change.

The numbers in the table below represent the number for whom test results were received by the Department of Health. A person can be tested by more than one laboratory and can have both positive and negative results. **Therefore, the sum of the numbers in each column will be larger than the total number of people tested.**

Reporting lab	Inconclusive	Negative	Positive	Percent positive	Total
EXPRESS GENE MOLECULAR DIAGNOSTICS LABORATORY			1	100%	1
ARKANSAS DEPARTMENT OF HEALTH			1	100%	1
HIGHLANDS CLINICAL LABORATORY			1	100%	1
CALIFORNIA PUBLIC HEALTH LABORATORY			1	100%	1
JOHNS HOPKINS MEDICAL LABORATORIES			1	100%	1
NOVANT HEALTH GOHEALTH URGENT CARE-HARRISBURG			1	100%	1
PIEDMONT HOSPITAL LAB			1	100%	1
CHARLOTTE CHD PORT CHARLOTTE		1			1
FLORIDA HOSPITAL KISSIMMEE			1	100%	1
AMD			1	100%	1
SANFORD REGIONAL HOSPITAL WORTHINGTON		1			1
SENTARA NORFOLK GENERAL HOSPITAL CENTRAL LAB			1	100%	1
SOUTHWEST FLORIDA DIVISION LAB			1	100%	1
AZALEA HEALTH			1	100%	1
COMMONWEALTH OF MASSACHUSETTS			1	100%	1
DOCTORS CLINICAL LABORATORY, INC			1	100%	1
LABCORP LAFAYETTE		1			1
PEACHEALTH LABORATORIES		1			1
LABCORP SOUTH CHARLESTON			1	100%	1
JRS LABORATORY			1	100%	1
FLORIDA HOSPITAL ALTAMONTE			1	100%	1
WASHINGTON STATE DEPARTMENT OF HEALTH PUBLIC HEALTH LABORATORIES			1	100%	1
WATAUGA MEDICAL CENTER			1	100%	1
WELLOW URGENT CARE		1			1
VIRACOR			1	100%	1
AMERICAN MEDICAL LABORATORIES			1	100%	1
UNKNOWN - MI			1	100%	1
AFC URGENT CARE			1	100%	1
NEW YORK STATE ELR - MERCY MEDICAL CENTER		1			1
BAYONET POINT HOSPITAL LAB			1	100%	1
MARION COUNTY HEALTH DEPARTMENT			1	100%	1
LEGACY LABORATORY			1	100%	1
NEW YORK STATE ELR - ST BARNABAS HOSPITAL		1			1
THE CHILDREN'S HOSPITAL OF PHILADELPHIA		1			1
ROBERT WOOD JOHNSON HOSPITAL			1	100%	1
RIVIERA BEACH HEALTH CENTER LAB			1	100%	1
ACL LABORATORIES INDUSTRIAL TOXICOLOGY			1	100%	1
SKY RIDGE MEDICAL CENTER - MICRO			1	100%	1
SPRING HILL REGIONAL HOSPITAL			1	100%	1
ADVANCED MEDICAL LABORATORIES (AML)			1	100%	1
AIM LABORATORIES			1	100%	1
PATHGROUP			1	100%	1
PRORENATA LABS			1	100%	1
ADVANCED URGENT CARE CENTER OF THE UPPER KEYS			1	100%	1
SUNY UPSTATE MEDICAL UNIVERSITY			1	100%	1
LAKEVIEW REGIONAL HOSPITAL			1	100%	1
PEDIATRIC HEALTHCARE ALLIANCE			1	100%	1

COVID-19: testing by laboratory

Data through Jul 28, 2020 verified as of Jul 29, 2020 at 09:25 AM

Data in this report are provisional and subject to change.

The numbers in the table below represent the number for whom test results were received by the Department of Health. A person can be tested by more than one laboratory and can have both positive and negative results. **Therefore, the sum of the numbers in each column will be larger than the total number of people tested.**

Reporting lab	Inconclusive	Negative	Positive	Percent positive	Total
NORTH RIVER FAMILY HEALTH CENTER			1	100%	1
NORTH CAROLINA STATE LABORATORY OF PUBLIC HEALTH, SPECTRUM LAB NETWORK			1	100%	1
MANATEE PEDIATRICS			1	100%	1
PERDIDO URGENT CARE			1	100%	1
LABCORP KANSAS CITY			1	100%	1
QUEST - HOUSTON LAB			1	100%	1
PRISMA HEALTH TUOMEY LABORATORY			1	100%	1
CHATSWORTH ASSISTED LIVING COMMUNITY AT PGA NATIONAL			1	100%	1
HEALTH NETWORK LABORATORIES		1			1
MEDICAL CLINIC OF HOUSTON			1	100%	1
MEDONE URGENT CARE			1	100%	1
MONTEFIORE NYACK HOSPITAL AFFILIATED LABORATORY		1			1
MUNSON MEDICAL CENTER			1	100%	1
MEDICAL CENTER ENTERPRISE			1	100%	1
ACCESS HEALTH CARE PHYSICIANS			1	100%	1
BIODORON LABORATORIES			1	100%	1
MEMORIAL HERMANN CONSOLIDATED LABORATORY SERVICES			1	100%	1
MEDSTAR HARBOR HOSPITAL			1	100%	1
NEW YORK STATE ELR - ERIE COUNTY PUBLIC HEALTH CLINICAL		1			1
MINUTECLINIC DIAGNOSTIC			1	100%	1
NEW YORK CITY DEPARTMENT OF HEALTH			1	100%	1
GIFFORD MEMORIAL HOSPITAL		1			1
MCH PHYSICIANS GROUP			1	100%	1
Lourdes Hospital			1	100%	1
DELAWARE DIAGNOSTICS LABS			1	100%	1
NORTH BROWARD MEDICAL CENTER			1	100%	1
CONEY ISLAND HOSPITAL		1			1
NEW YORK STATE ELR - MONTEFIORE MEDICAL CENTER LABORATORIES - WEILER			1	100%	1
NEW YORK STATE ELR - NEW YORK PRESBYTERIAN-LOWER MANHATTAN		1			1
MIDMICHIGAN MEDICAL CENTER			1	100%	1
MHS LAB		1			1
NAVAL BRANCH MEDICAL CLINIC			1	100%	1
NORTHERN WESTCHESTER HOSPITAL LABORATORY		1			1
PALM SPRINGS GENERAL HOSPITAL			1	100%	1
QUEST DIAGNOSTICS-OCALA-SE 3RD		1			1
FLORIDA DEPARTMENT OF HEALTH PALM BEACH COUNTY			1	100%	1
PEDIATRIC ASSOCIATES - JACKSONVILLE			1	100%	1
FLORIDA CLINICAL LABORATORY - BIOREFERENCE LABORATORIES			1	100%	1
FLORIDA HOSPITAL LAB			1	100%	1
SANFORD SOUTH UNIVERSITY		1			1
SEA LEVEL LABS			1	100%	1
NOT GIVEN			1	100%	1
REGIONAL MEDICAL LABORATORY			1	100%	1
REMISE OCCUPATIONAL HEALTH SOLUTIONS INC			1	100%	1
BAYLOR COLLEGE OF MEDICINE			1	100%	1
BAYCARE OUTREACH LAB			1	100%	1
BEEBE MEDICAL CENTER LABORATORY		1			1

COVID-19: testing by laboratory

Data through Jul 28, 2020 verified as of Jul 29, 2020 at 09:25 AM

Data in this report are provisional and subject to change.

The numbers in the table below represent the number for whom test results were received by the Department of Health. A person can be tested by more than one laboratory and can have both positive and negative results. **Therefore, the sum of the numbers in each column will be larger than the total number of people tested.**

Reporting lab	Inconclusive	Negative	Positive	Percent positive	Total
LAKE MARY KIDS CENTRA CARE			1	100%	1
LABCORP-PORT ST.LUCIE		1			1
ST FRANCIS			1	100%	1
SONIC REFERENCE LABORATORY			1	100%	1
BAYCARE ALLIANT HOSPITAL			1	100%	1
SMITH KLINE			1	100%	1
SOUTHEAST GEORGIA HEALTH SYSTEM			1	100%	1
LAKEWOOD RANCH ER 24/7			1	100%	1
LATE HOURS URGENT CARE			1	100%	1
NORTHWEST FL COMM HOSP			1	100%	1
NORTHWESTERN MEMORIAL HOSPITAL			1	100%	1
NORTHSIDE HOSPITAL DULUTH			1	100%	1
MEDRITE			1	100%	1
CATHOLIC HEALTH SYSTEM DEPT LABORATORY		1			1
MAGNOLIA ADULT, LLC			1	100%	1
BLOOD SYSTEMS LABORATORIES			1	100%	1
LabCorp L#09258090 M#09258105			1	100%	1
BLOUNT MEMORIAL HOSPITAL		1			1
OHIO STATE UNIVERSITY MEDICAL CENTER			1	100%	1
JOHNS HOPKINS MEDICAL LABS			1	100%	1
JEFFERSON COUNTY HEALTH DEPARTMENT-MONTICELLO		1			1
KENTUCKY CABINET FOR HEALTH AND FAMILY SERVICES			1	100%	1
BAYA URGENT CARE			1	100%	1
PHELPS HOSPITAL LABORATORY		1			1
LABCORP HOUSTON			1	100%	1
KETTERING MEDICAL CENTER			1	100%	1
LABCORP - LADY LAKE			1	100%	1
ECLRS			1	100%	1
BARDMOOR LABORATORY			1	100%	1
HELIX DIAGNOSTICS			1	100%	1
HAWAII DEPARTMENT OF HEALTH LAB			1	100%	1
LEESBURG FAMILY MEDICINE		1			1
Mt Sinai Aventura			1	100%	1
MONTANA DEPARTMENT OF PUBLIC HEALTH & HUMAN SERVICES			1	100%	1
HANCOCK REGIONAL HOSPITAL		1			1
VITAE DIAGNOSTICS			1	100%	1
WILMINGTON VA MEDICAL CENTER			1	100%	1
MINUTECLINIC DIAGNOSTIC OF TEXAS, LLC		1			1
WEST			1	100%	1
LOYOLA UNIVERSITY MEDICAL CENTER LABORATORY			1	100%	1
WARD MEMORIAL HOSPITAL		1			1
UCLA HEALTHCARE CLINICAL LABS			1	100%	1
MEDICAL ARTS LABORATORY			1	100%	1
MADISON COUNTY MEMORIAL HOSP		1			1
ACCESSLAB		1			1
SUNY AT STONY BROOK			1	100%	1
ST. LUKE'S HOSPITAL - BETHLEHEM CAMPUS		1			1

COVID-19: testing by laboratory

Data through Jul 28, 2020 verified as of Jul 29, 2020 at 09:25 AM

Data in this report are provisional and subject to change.

The numbers in the table below represent the number for whom test results were received by the Department of Health. A person can be tested by more than one laboratory and can have both positive and negative results. **Therefore, the sum of the numbers in each column will be larger than the total number of people tested.**

Reporting lab	Inconclusive	Negative	Positive	Percent positive	Total
LAB CORP PHOENIX			1	100%	1
ADVANCED LABORATORY SERVICES			1	100%	1
LABCORP-CRYSTAL RIVER			1	100%	1
VRL EUROFINs			1	100%	1
US LABORATORIES			1	100%	1
UC SAN DIEGO HEALTH			1	100%	1
ACCESS HEALTH CARE			1	100%	1
ST. LUCIE COUNTY HEALTH DEPARTMENT		1			1
ALLIANCE LABORATORY SERVICES			1	100%	1
CAROMONT HEALTH			1	100%	1
PARKWAY REGIONAL MEDICAL CENTER LAB			1	100%	1
OHIO DEPARTMENT OF HEALTH			1	100%	1
PALM BEACH COUNTY HEALTH DEPARTMENT LABORATORY			1	100%	1
AFFILIATED LABORATORIES INC			1	100%	1
BAY CARE LAB SERVICES/ST. ANTHONY'S HOSPITAL			1	100%	1
APS-SUMMIT CARE PHARMACY, LLC DBA OMNICARE		1			1
SCRIPPS CLINIC MEDICAL			1	100%	1
ADVENTIST HINSDALE HOSPITAL LABORATORY			1	100%	1
SACRED HEART MEDICAL GROUP			1	100%	1
State Lab Unspecifd			1	100%	1
DOCTOR'S WALK-IN CLINIC / QUEST DIAGNOSTICS			1	100%	1
SMITH NORTHVIEW HOSPITAL LAB			1	100%	1
WOLFSON (USE BAPTIST)			1	100%	1
YORK HOSPITAL - LABORATORY			1	100%	1
DOCS URGENT CARE			1	100%	1
THE HEART HOSPITAL BAYLOR PLANO			1	100%	1
TIEHH BIOTERRORISM RESPONSE LAB			1	100%	1
TEXAS DEPARTMENT OF STATE HEALTH SERVICES			1	100%	1
SHANDS AT LAKE SHORE LAB			1	100%	1
SCIENCE CARE			1	100%	1
EXCEL URGENT CARE OF NJ			1	100%	1
SEMINOLE COUNTY HEALTH DEPARTMENT			1	100%	1
UNITED HEALTHCARE			1	100%	1
UNIVERSITY OF MISSOURI HEALTH CARE			1	100%	1
LABCORP - ORLANDO		1			1
UTMB PATHOLOGY CLINICAL SERVICES LABORATORY			1	100%	1
SOUTHWEST REGIONAL PCR LABORATORY			1	100%	1
DALLAS MEDICAL CENTER			1	100%	1
UW HOSPITAL AND CLINICS			1	100%	1
TANNER MEDICAL CENTER EAST AL		1			1
TRINITAS REGIONAL MEDICAL CENTER			1	100%	1
ST. MARY MEDICAL CENTER		1			1
UF KANAPAHA LAB BEAKER		1			1
UNIVERSITY OF FLORIDA			1	100%	1
THOMAS LANGLEY			1	100%	1
TEN HEALTHCARE			1	100%	1
THE UNIVERSITY OF VERMONT MEDICAL CENTER		1			1

COVID-19: testing by laboratory

Data through Jul 28, 2020 verified as of Jul 29, 2020 at 09:25 AM

Data in this report are provisional and subject to change.

The numbers in the table below represent the number for whom test results were received by the Department of Health. A person can be tested by more than one laboratory and can have both positive and negative results. **Therefore, the sum of the numbers in each column will be larger than the total number of people tested.**

Reporting lab	Inconclusive	Negative	Positive	Percent positive	Total
UNIVERSITY OF KANSAS MEDICAL CENTER			1	100%	1
VIDANT MEDICAL CENTER			1	100%	1
Viracor Eurofins			1	100%	1
VALLEY HOSPITAL MEDICAL CENTER		1			1
UNK			1	100%	1
UT MEMPHIS UNIVERSITY HEALTH SERVICES			1	100%	1
COLORADO DEPARTMENT OF HEALTH LABORATORY SERVICES DIVISION			1	100%	1
URGENT CARE WEST CLINIC			1	100%	1
QUEST ELR		1			1
RIVERVIEW REGIONAL MEDICAL CENTER		1			1
TRUMAN MEDICAL CENTER - HOSPITAL HILL			1	100%	1
UNITED CLINICAL LABORATORIES			1	100%	1
CQUENTIA NGS, LLC			1	100%	1
COMPUNET CLINICAL LAB			1	100%	1
ST. JOSEPH'S HOSPITAL NORTH			1	100%	1
ST JOSEPHS CHILDRENS HOSPITAL OUTREACH			1	100%	1
PROGENESIS INC			1	100%	1
PRIMARY CARE OF THE TREASURE COAST			1	100%	1
Total	18,186	3,971,204	567,610	12%	4,557,000