



POST-DISASTER REDEVELOPMENT PLANNING: State of Florida Initiative



Florida Department of Community Affairs
Florida Division of Emergency Management

Overview of Presentation

- History of the Post-Disaster Redevelopment Planning Initiative
- Getting Started
- Planning Process
- Plan Topics
- Implementation Considerations
- Future PDRP Efforts
- Grant Opportunity



Please download the guidebook at the following website:

<http://www.dca.state.fl.us/fdcp/dcp/PDRP/overview.cfm>

The grant application is available at:

<http://www.floridadisaster.org/Recovery/IndividualAssistance/pdredevelopmentplan/Index.htm>

The image is a composite of two aerial photographs of a residential neighborhood. The top photograph shows a well-maintained area with houses, streets, and some commercial buildings. A dark blue semi-transparent box is overlaid on the bottom half of this image, containing the title text in yellow. The bottom photograph shows the same neighborhood after a disaster, with significant damage to the houses, debris scattered everywhere, and many roofs missing or partially collapsed. The text is centered in the dark blue box.

History of the Post-Disaster Redevelopment Planning Initiative

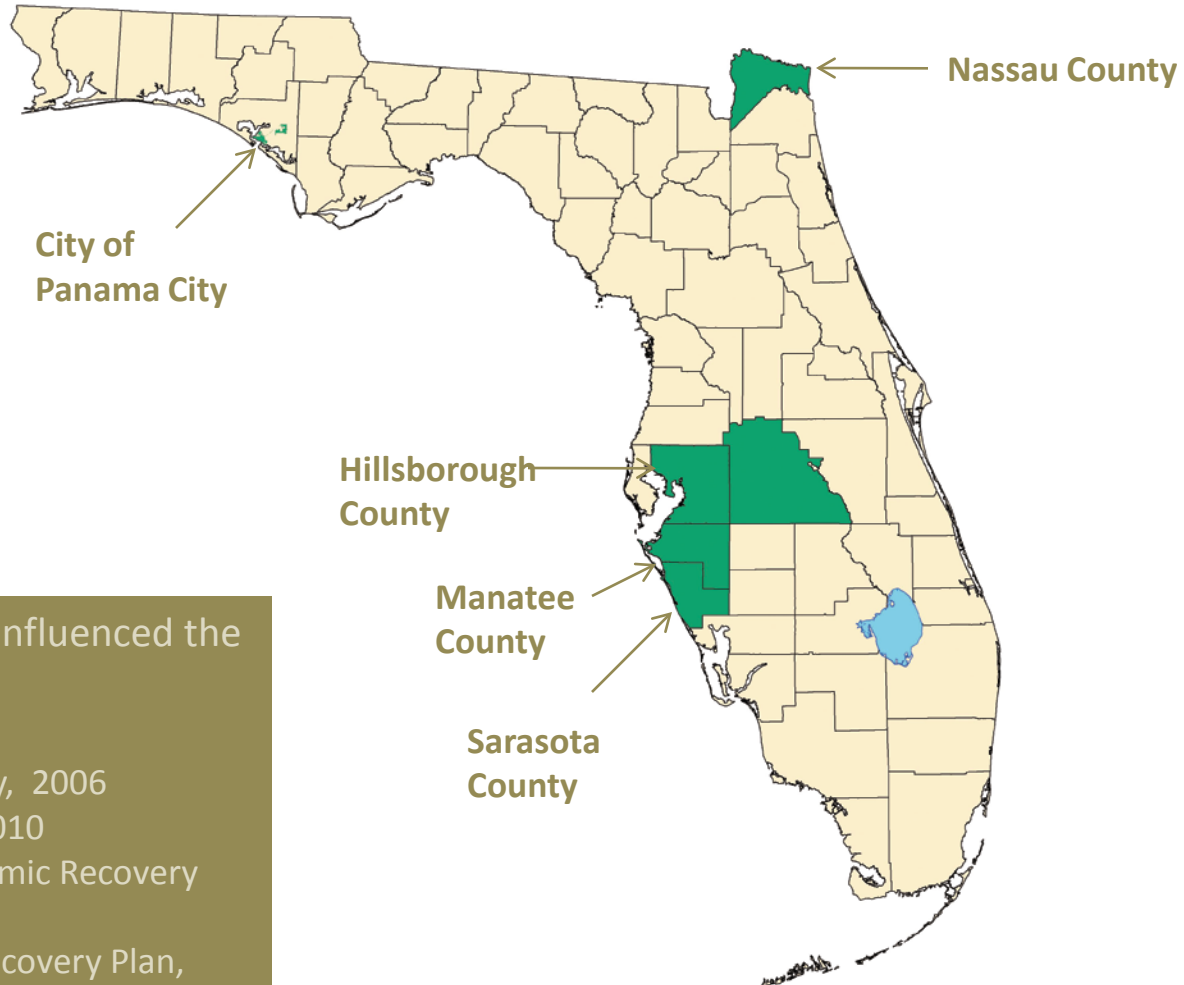
Project Partners – Funding Sources



Statewide Focus Group

- **Gary Appelson**, Sea Turtle Conservancy
- **Mitchell Austin**, City of Punta Gorda
- **Pat Blackshear**, Walton County
- **Lieske Cox**, Enterprise Florida
- **Robert Deyle**, Florida State University
- **Roy Dunn**, Florida Division of Emergency Management
- **Ann-Margaret Esnard**, Florida Atlantic University
- **Walter Fufidio**, Nassau County
- **Howard Glassman**, Florida Department of Transportation
- **Allara Mills-Gutcher**, City of Panama City
- **Eugene Henry**, Hillsborough County
- **Betti Johnson**, Tampa Bay Regional Planning Council
- **Curtis Knowles**, Polk County
- **Sandy Meyer**, Florida Division of Emergency Management
- **Cindy Palmer**, Federal Emergency Management Agency
- **Jim Quinn**, Florida Department of Environmental Protection
- **Heidi Recksiek**, National Oceanic and Atmospheric Administration
- **Sharon Tarman**, Manatee County
- **Sheridan “Butch” Truesdale**, Palm Beach County
- **Mickie Valente**, Valente Strategic Advisors, LLC.
- **Gabriela Vigo**, Federal Emergency Management Agency
- **John Wilson**, Lee County
- **Michael Wood**, Manatee County
- **Laird Wreford**, Sarasota County

Pilot Communities



Other Plans that Influenced the process...

- Palm Beach County, 2006
- Alachua County, 2010
- East Central Economic Recovery Plan, 2008
- Monroe County Recovery Plan, 2010



Getting Started

Chapter 1



What is a Post-Disaster Redevelopment Plan?

A Post-Disaster Redevelopment Plan identifies policies, operational strategies, and roles and responsibilities for implementation that will guide decisions that affect long-term recovery and redevelopment of the community after a disaster. The plan emphasizes seizing opportunities for hazard mitigation and community improvement consistent with the goals of the local comprehensive plan and with participation of the citizens. Recovery topics addressed in the plan should include business resumption and economic redevelopment, housing repair and reconstruction, infrastructure restoration and mitigation, short-term recovery actions that affect long-term redevelopment, sustainable land use, environmental restoration, and financial considerations as well as other long-term recovery issues identified by the community.

Why should my community develop a Post-Disaster Redevelopment Plan?

- Post-disaster redevelopment planning is **REQUIRED** for all coastal communities and encouraged for inland communities
(Section 163.3177(7)(I), F.S.)
- Coastal Management Element of local comprehensive plan must include policies on post-disaster redevelopment planning.
(Rule 9J-5.012(3)(2)(5), F.A.C.)

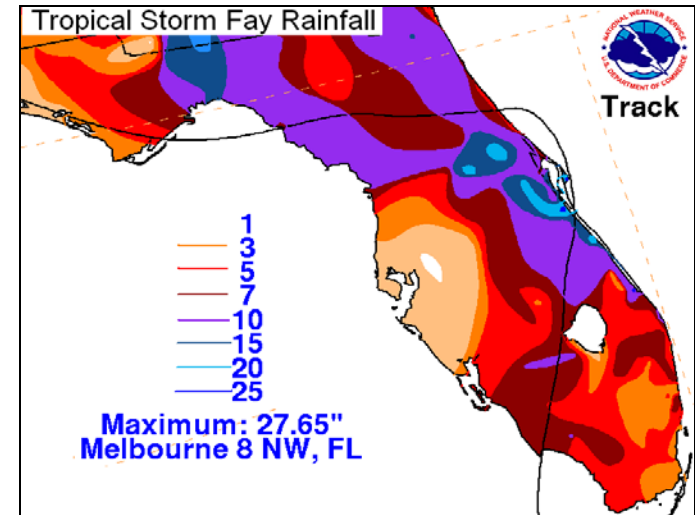
Benefits of Post-Disaster Redevelopment Planning

- Faster and More Efficient Recovery
- Opportunities to Build Back Better
- Local Control Over Recovery



All Florida Communities are Vulnerable to Disaster

- 62 major disaster declarations between 1960 and 2009.
- Inland communities are prone to wildfire and inland flooding.



Types and Levels of Disasters

- Post-Disaster Redevelopment Planning is **NOT** only for catastrophic events.
- Communities should take advantage of all windows of opportunity and plan for future vulnerability.

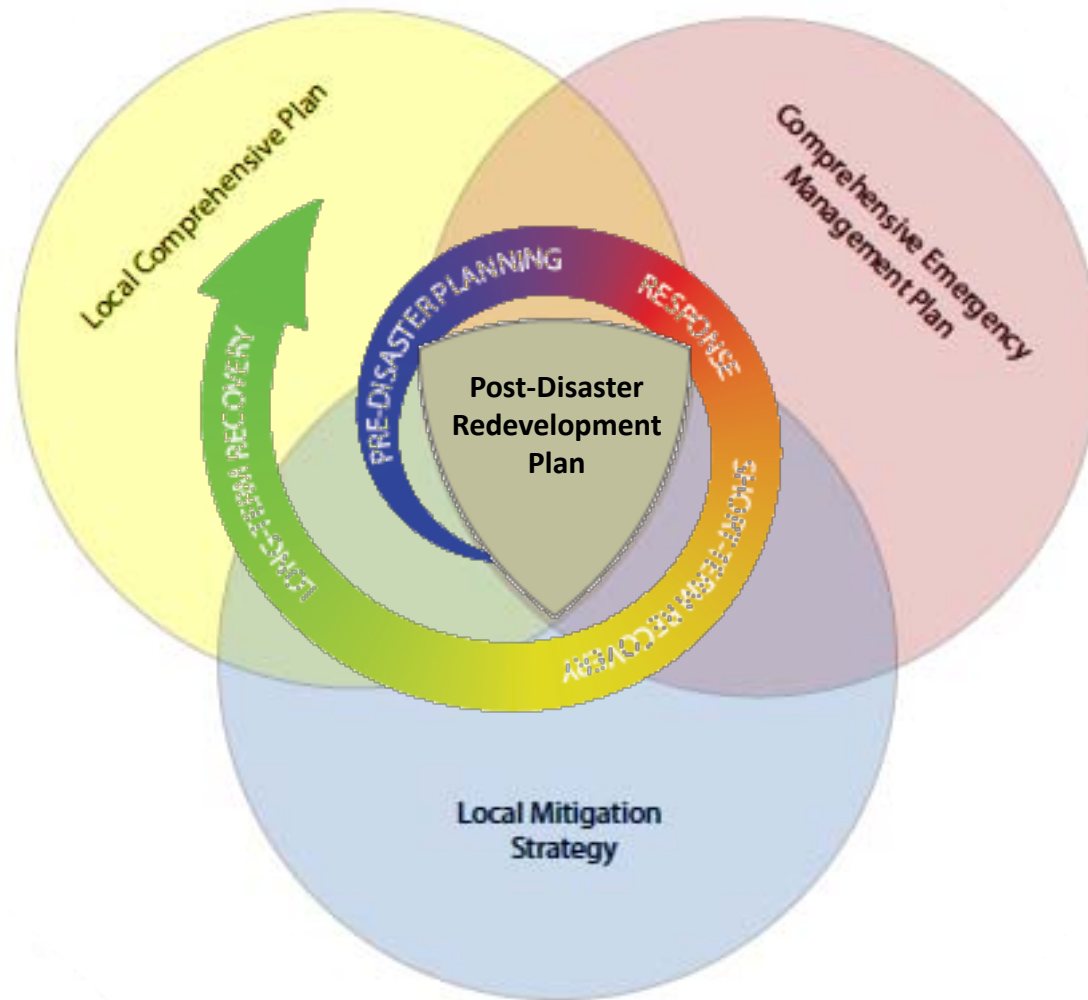


Disaster Phases

- Pre-Disaster
- Emergency Response
- Short-Term Recovery
- Long-Term Recovery



Interaction with other Plans



Different Approaches to Plan Development

- Adopt a Post-Disaster Redevelopment Ordinance
- Integrate Post-Disaster Redevelopment into the Local Comprehensive Plan
- Integrate Post-Disaster Redevelopment into the Local Mitigation Strategy
- Expand the Recovery Annex of the CEMP to address Post-Disaster Recovery Issues
- Stand-Alone PDRP integrated with Other Local Plans

Which Jurisdictions to Include?

- Municipal Level (City of Panama City)
- Regional (East Central)
- Countywide (Alachua, Hillsborough, Palm Beach, Polk, Manatee, Nassau and Sarasota)

Lessons Learned

- Plans work best if coordinated countywide.
- It can take longer than a year to complete the planning process.
- Education on the topic of long-term recovery is needed up front.

Check out online case studies for more information...

Key Ingredients for Plan Success

- Leadership
- Participation
- Commitment

Top-level and grassroots support is important to ensure that the Plan will be the guiding document for long-term redevelopment after a disaster



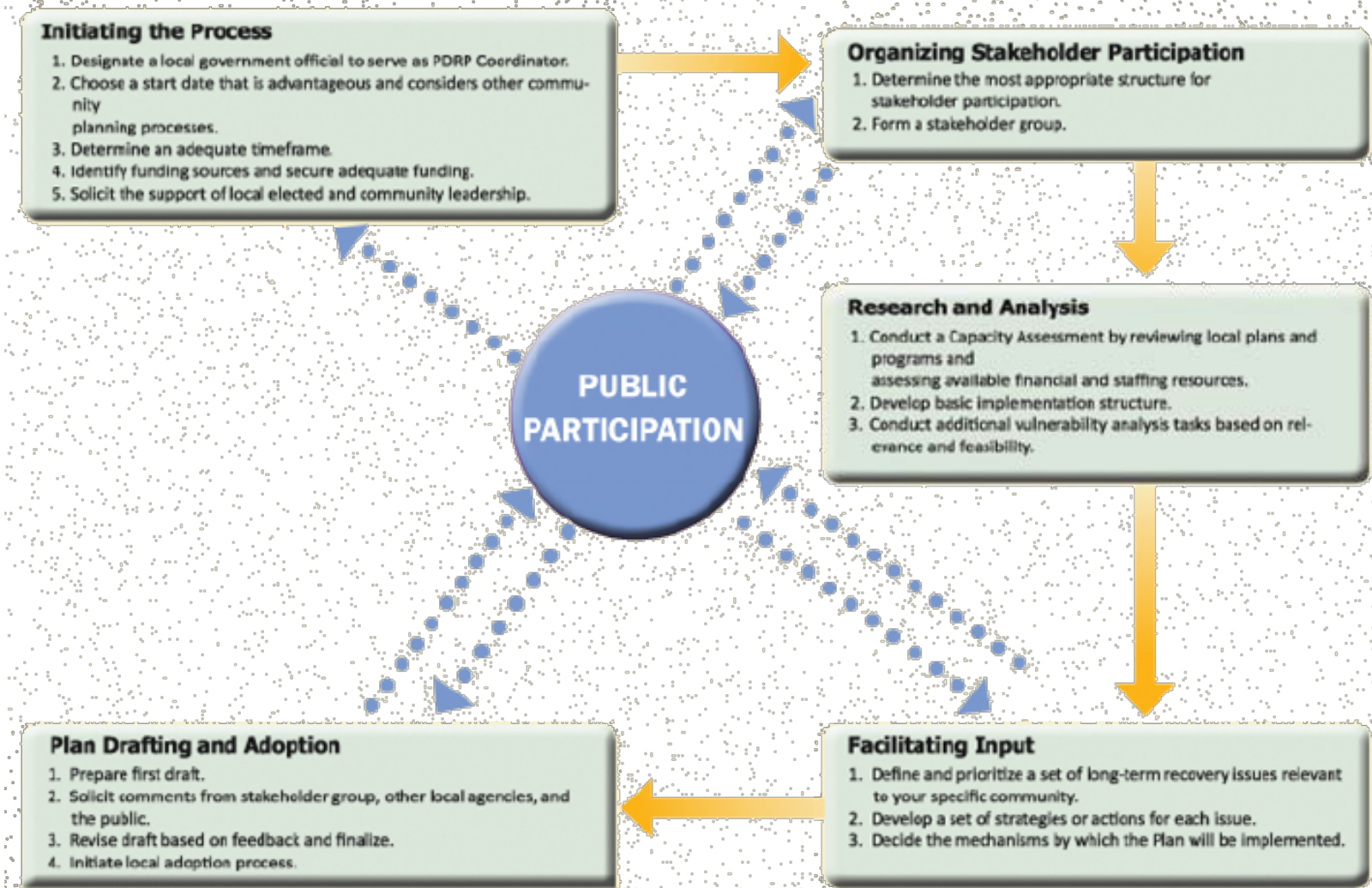


Planning Process

Chapter 2



The Post-Disaster Redevelopment Planning Process



PDRP Coordinator Role

- Organizes stakeholder group
- Facilitates planning process
- Leads public outreach
- Liaises with community leaders
- Oversees research and analysis
- Write/Edits Plan drafts
- Solicits input on planning effort
- Presents the plan for adoption



PDRP Coordinator

- **Alachua County:** Emergency Management, Public Safety
- **Hillsborough County:** Hazard Mitigation Section Manager, Planning and Growth Management Department
- **Manatee County:** Hazard Mitigation Planner, Comprehensive Planning Division
- **Palm Beach County:** Senior Hazard Mitigation Planner, Emergency Management Department
- **Panama City:** Manager, Planning Services
- **Polk County:** Senior Transportation Planner, Long-Range Planning Division
- **Sarasota County:** Coastal Resources Manager, Natural Resources Department





Stakeholder Participation Activity



Organizing Stakeholder Participation

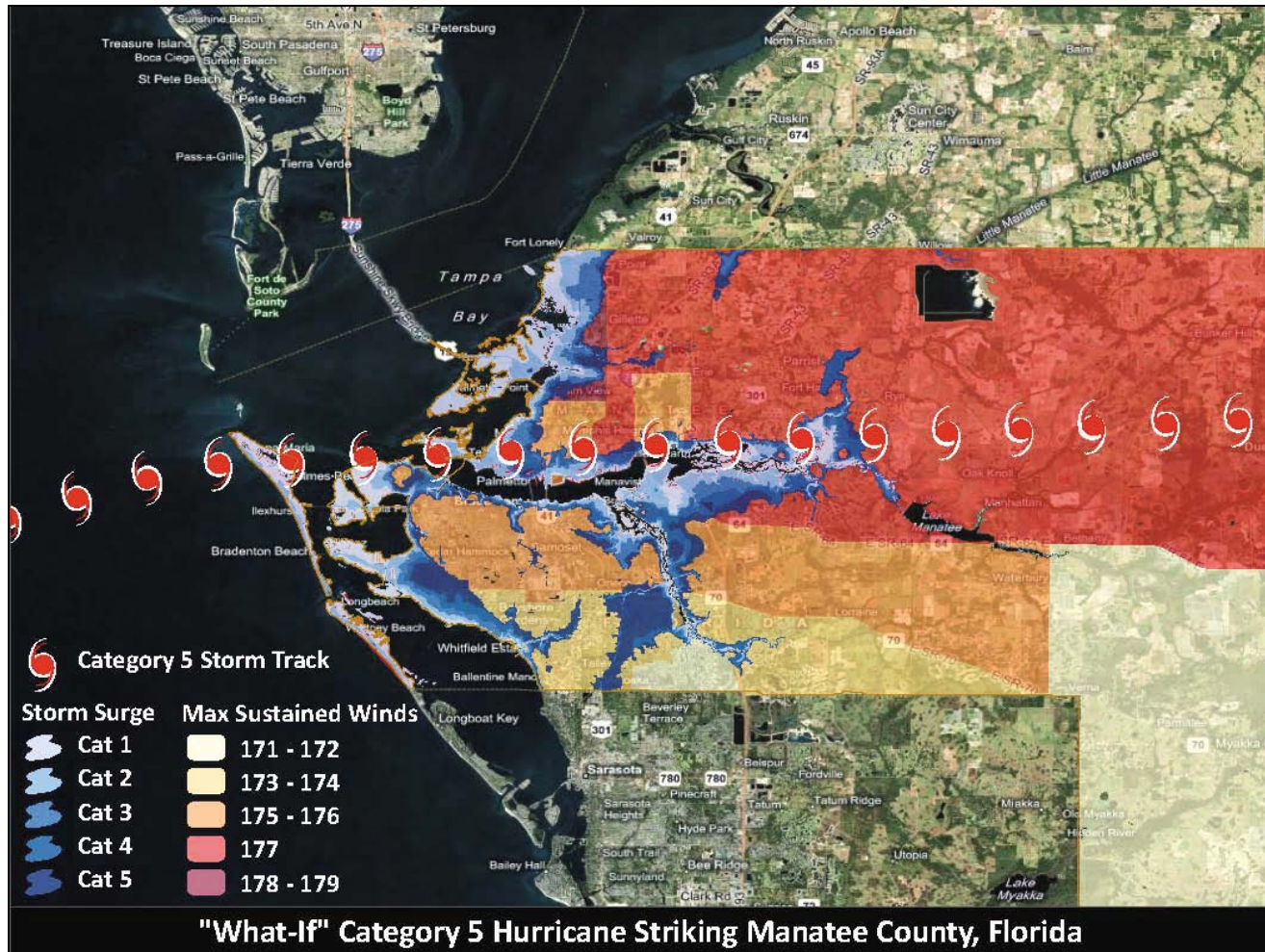
Topic	Stakeholder Group
General/Administrative	Chief Administrative Officer
	Municipalities (if jurisdiction is a county)
	Public Information Officer
	Public Safety or Emergency Management Department
	Finance Department
	Legal Department
	Administrative or Personnel Department
	GIS Department
Land Use/Comprehensive Planning	Planning or Community Development Department
	Community Redevelopment Associations
	Regional Planning Councils
Housing	Building and/or Zoning Department
	Code Enforcement Department
	Neighborhood or Homeowner's Association
	Homebuilder's Association
Economy	Economic Development Organization or Chamber(s) of Commerce
	Tourism or Visitor's Bureau
	Major Employers
Infrastructure	Public Works Department
	Solid Waste Department
	Public and/or Private Utilities
	Metropolitan Planning Organization (transportation)
	Transit Organization/ Company
Health and Social Services	School District and Higher Education Facilities
	Health Department or Medical Organization
	Human or Social Service Agencies
	Non-governmental Organization Service Providers
Environment	Environmental Resources or Parks and Recreation Department
	Water Management District

Capacity Assessment

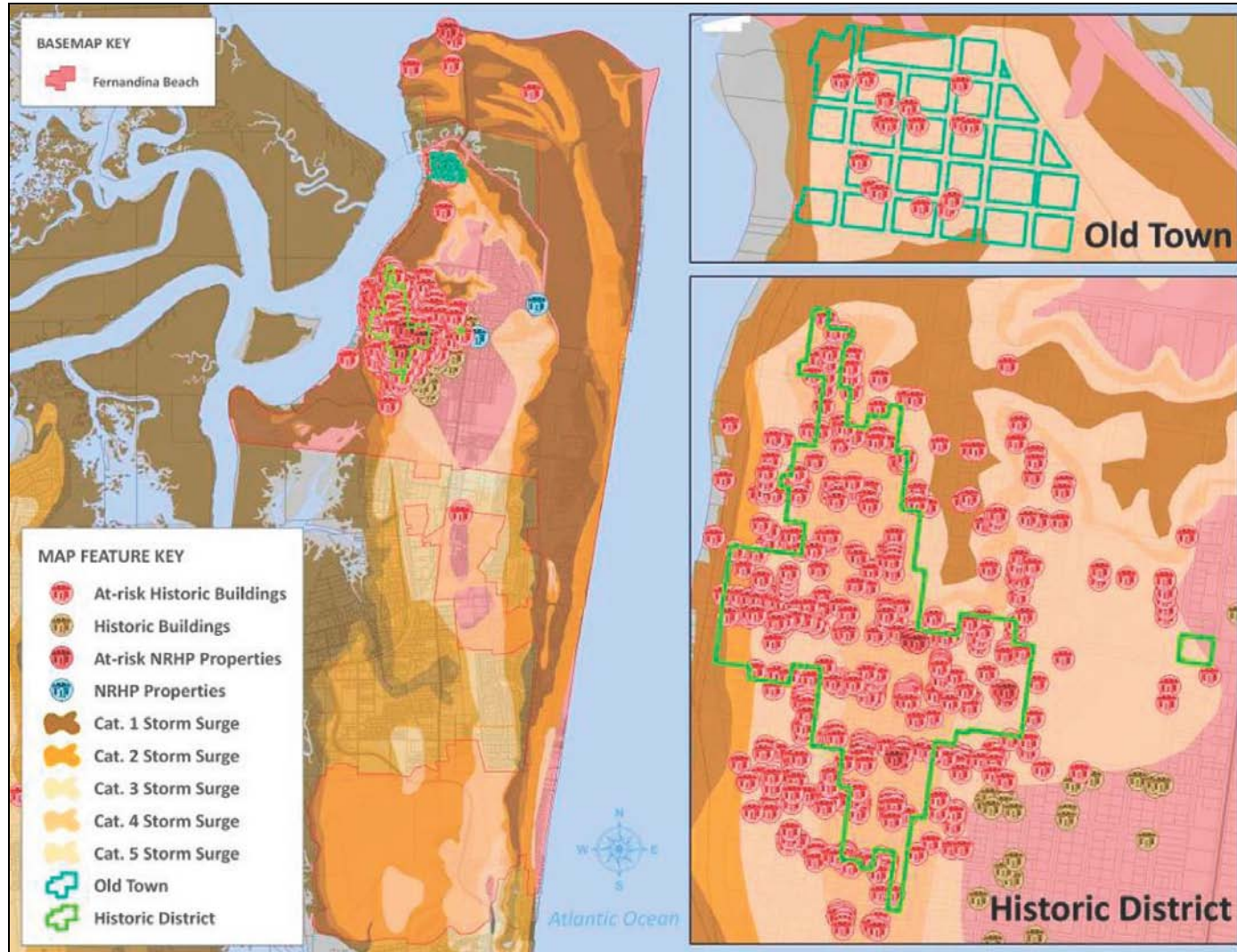
Review Plans, Programs and Resources for....

1. Existing data and analysis for vulnerability assessment
2. Current redevelopment standards
3. Existing redevelopment plans (CRAs, etc.)
4. Staff to assist with plan
5. Opportunities to advance other programs
6. Gaps or weaknesses in current plans

Vulnerability Analysis: Manatee County



Vulnerability Analysis: Nassau County



Facilitating Input

- Keep the focus on **LONG-TERM RECOVERY**.
- Make information on the purpose of the project **easy to find** on your website.
- Frame meetings with the **goals** you wish to accomplish for that day.
- **Facilitate** your break-out sessions with seasoned participants.
- Remember you rarely have to reinvent the wheel with this plan – **shape** what already exists!

Developing Strategies and Actions: The PDRP “To Do” List

- **Pre-Disaster Actions vs. Post-Disaster Actions**
- Estimated Start Date
- Issue that the action will address
- Lead Agency/Organization
- Funding Sources or Resources needed
- Targeted population



Planning Topics

Chapter 3



Overview of Post-Disaster Redevelopment Planning Topics

- Land Use
- Housing
- Economic Redevelopment
- Infrastructure and Public Facilities
- Health and Social Services
- Environment

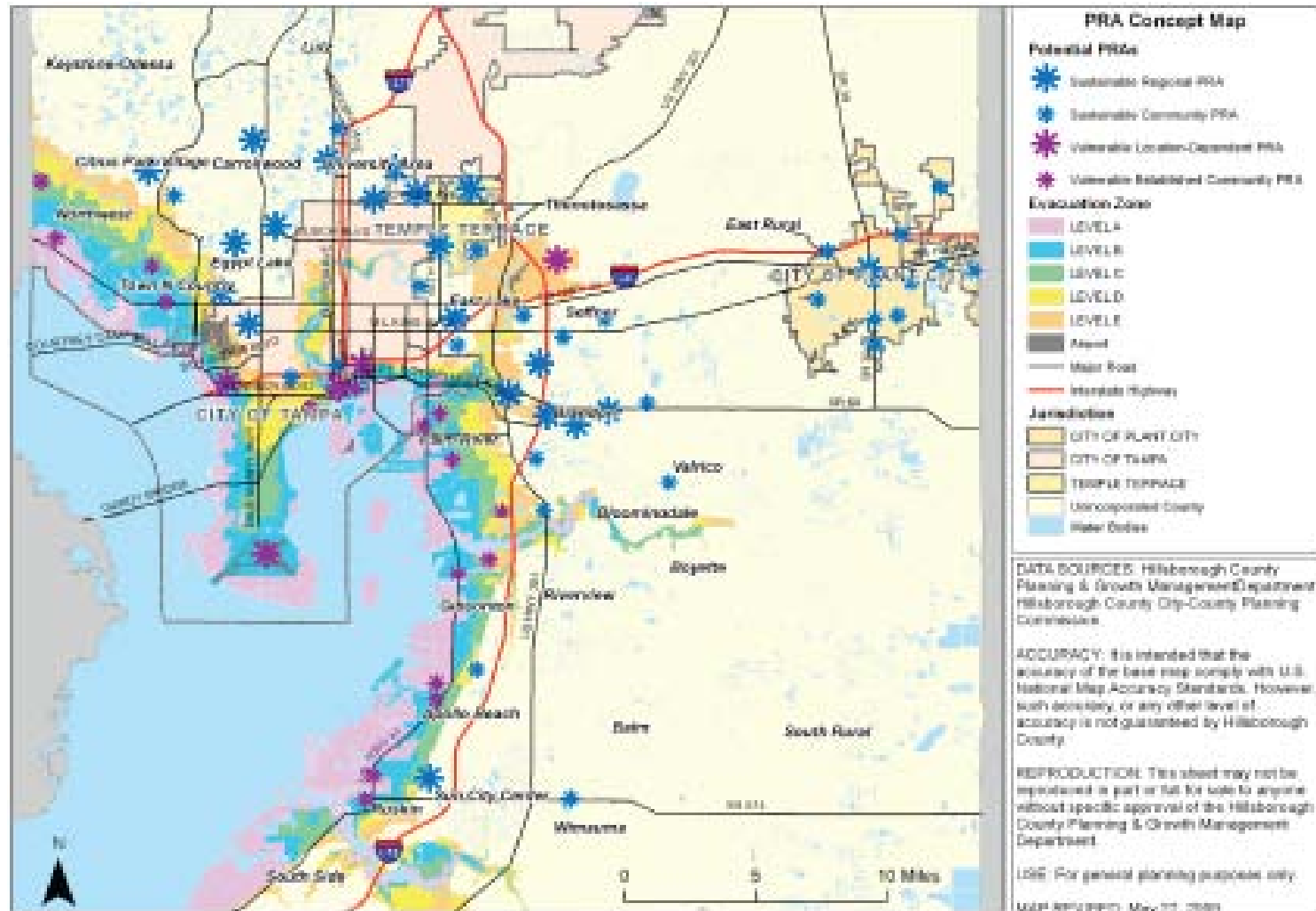
Land Use

- Phased Reconstruction and Streamlined Permitting
- Reducing Disaster Vulnerability through Voluntary Mitigation Programs
- Prioritizing Areas to Focus Redevelopment



FSU, R. Deyle, 2008

Case Study: Hillsborough County



Housing

- Temporary Housing
Siting Criteria, Provision
and Removal
- Transitioning Residents
Back to Permanent
Housing
- Rebuilding Affordable
Housing



Economic Redevelopment

- Resumption and Retention of Major Employers
- Tourism Renewal
- Opportunities to Sustainably Restore Economic Vitality



Infrastructure and Public Facilities

- Infrastructure for Temporary Recovery Operations
- Financing Infrastructure and Public Facilities Repair
- Relocation of Vulnerable Infrastructure and Public Facilities



Health and Social Services

- Health Facility Restoration
- Coordination and Assistance for Non-Governmental Organizations and Volunteers
- Schools, Higher Education Reopened



Environment

- Beach and Dune Restoration
- Environmental and Historic Review of Temporary Sites
- Green Rebuilding



Case Study: Alys Beach, FL

FORTIFIED...for Safer Living Program



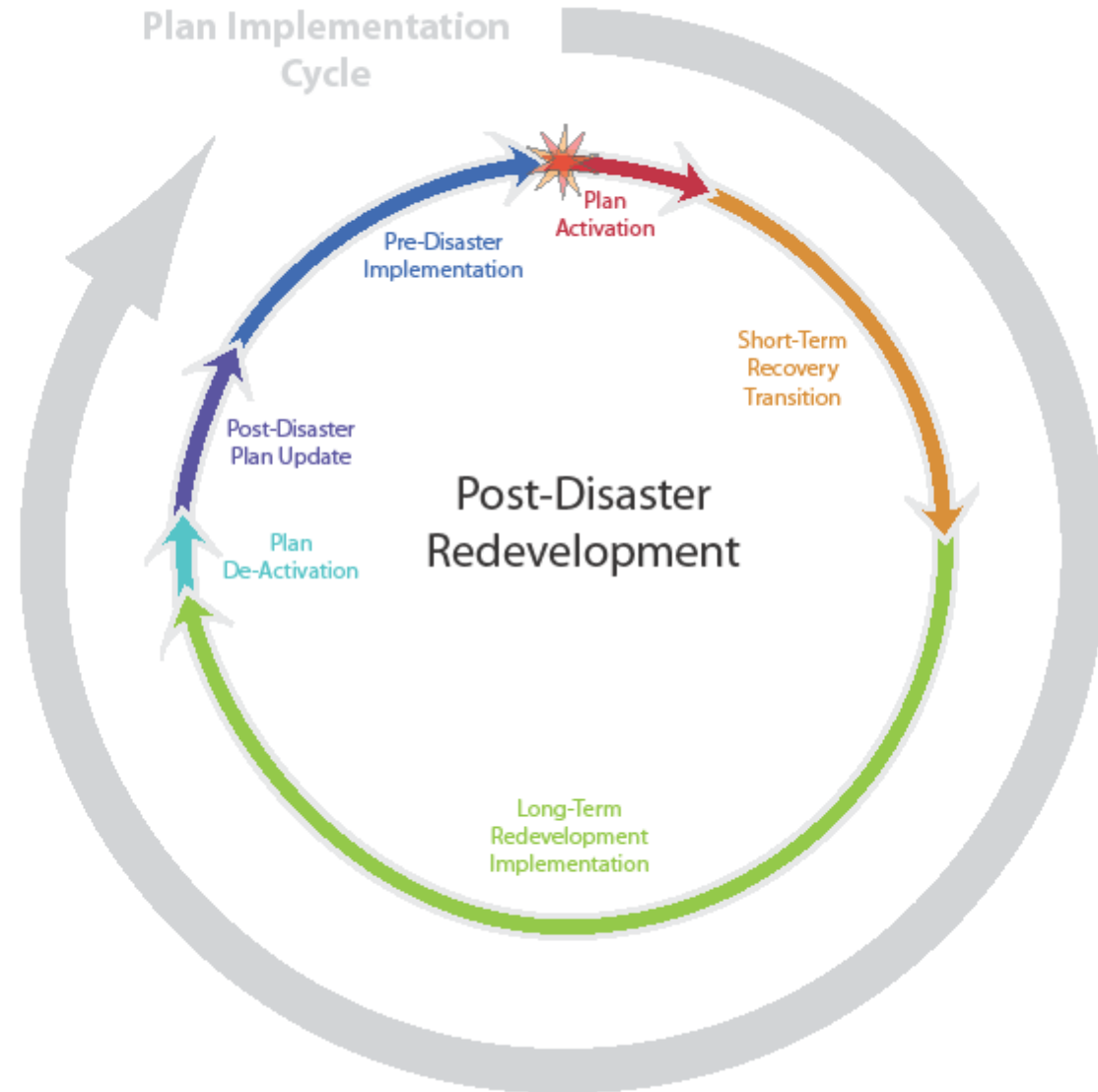


Implementation Considerations

Chapter 4



Plan Implementation Steps



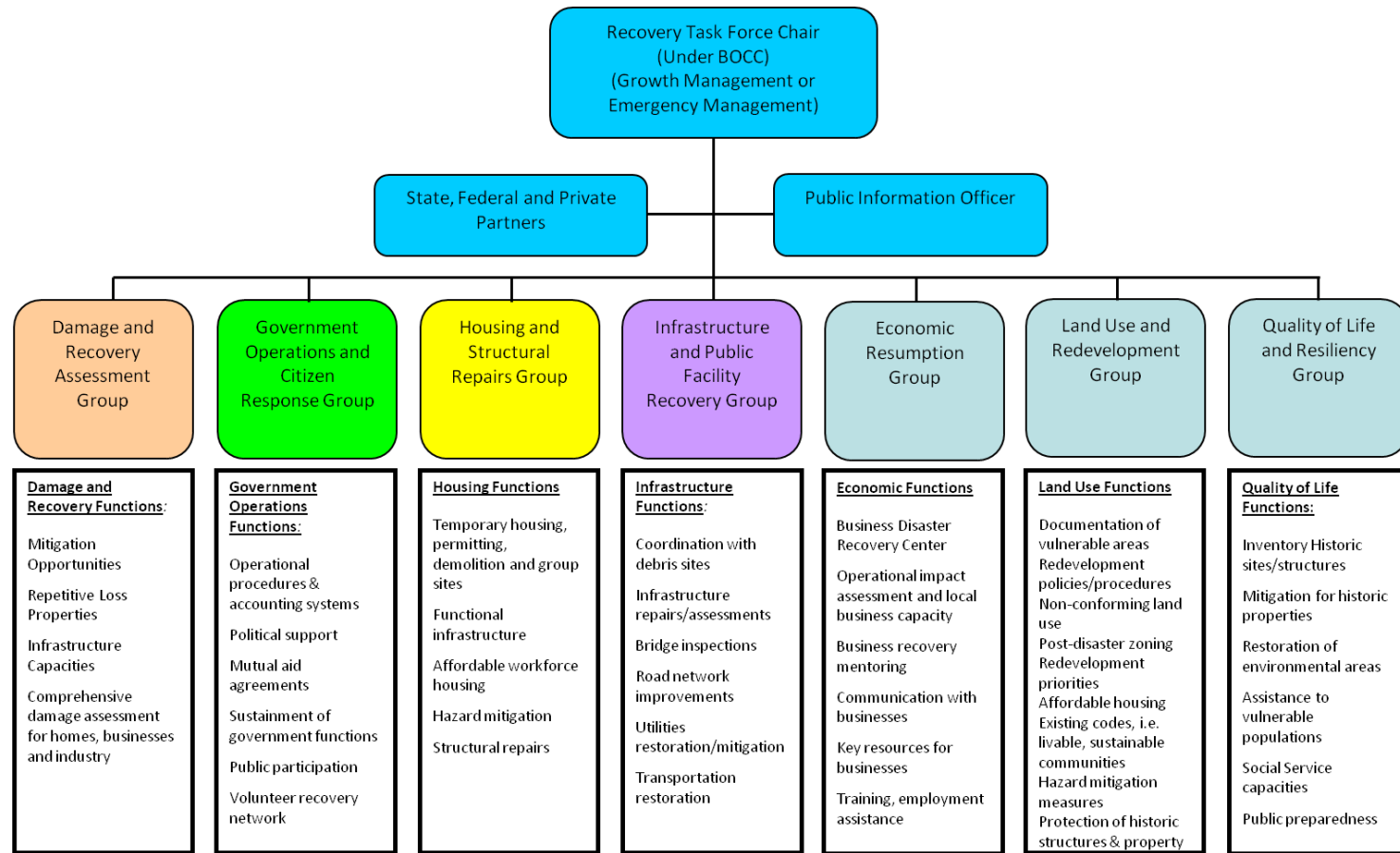
Pre-Disaster Implementation

- Implementing Pre-Disaster Actions
- Plan Maintenance and Update
- Exercising the Plan



Post-Disaster Implementation

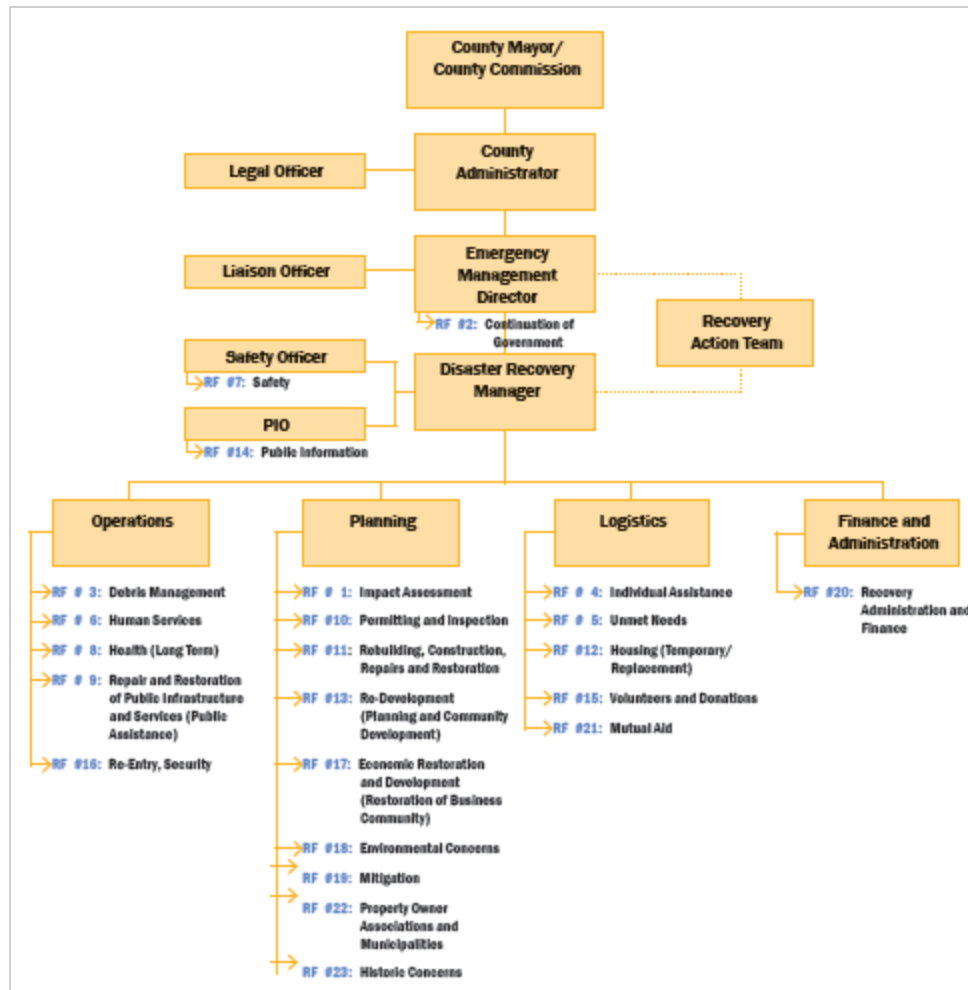
Activation and Decision-making Authority



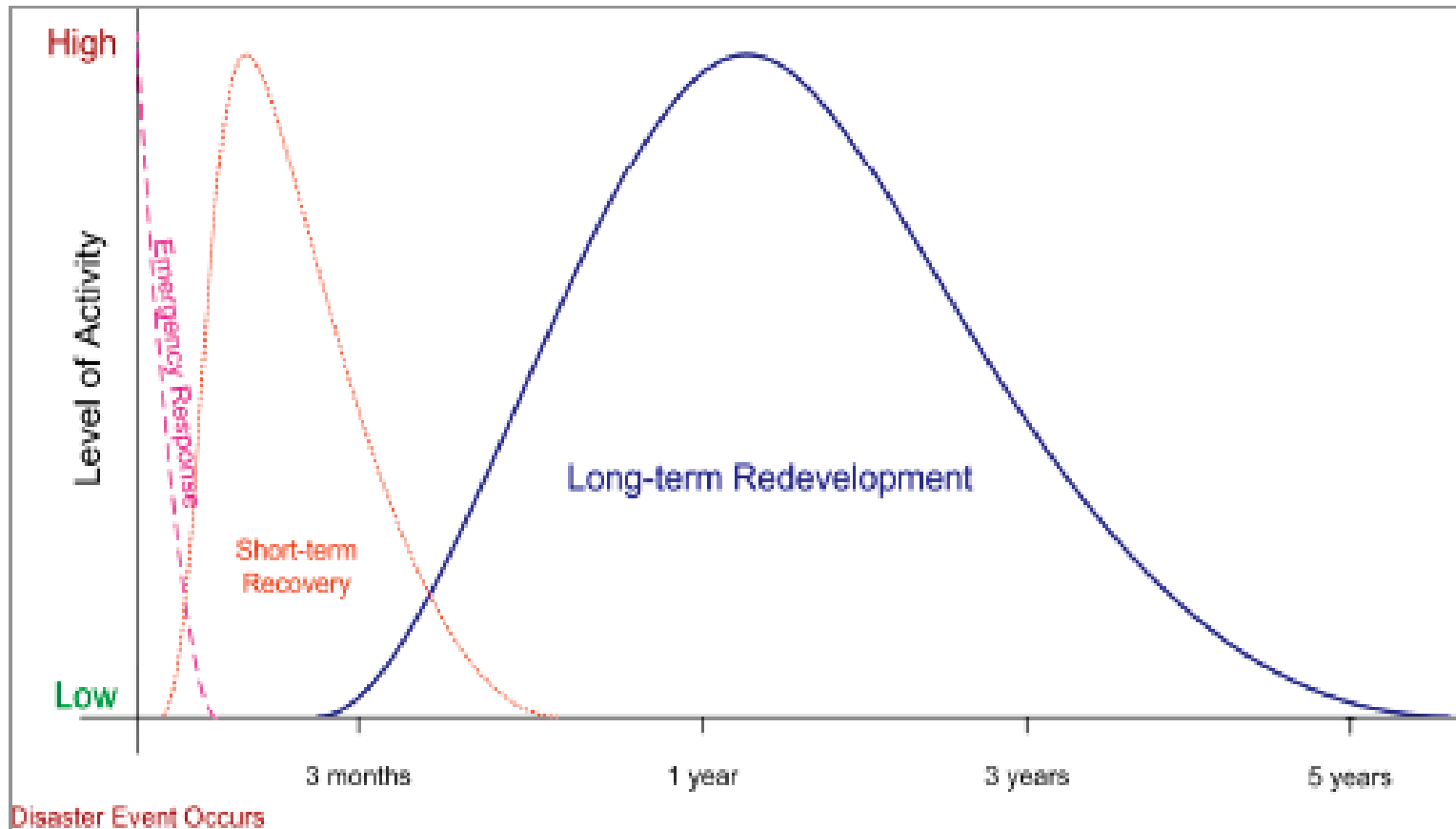
Post-Disaster Organization and Roles

“Long-term recovery functions are logical extension of normal department functions. The organization for recovery implementation is likely to mirror the jurisdiction’s normal organization.”

Recovery Function Structure: Monroe County



Milestones for Transitioning Between Post-Disaster Phases

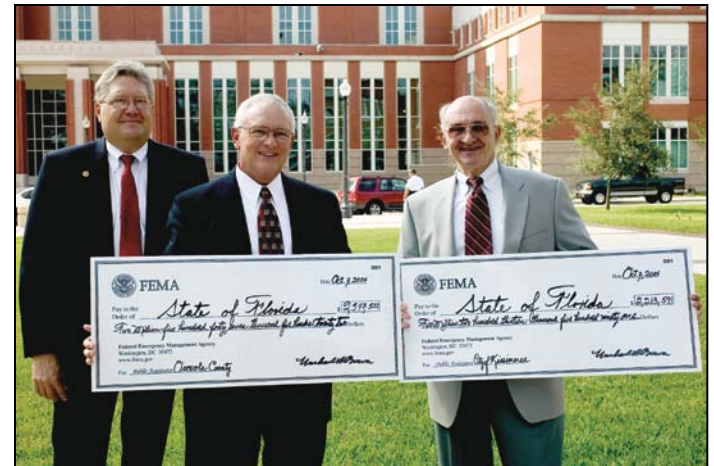


Financing Implementation: Pre-Disaster

- Evaluate the vulnerability of local government revenues
- Identify core services
- Identify bond capacity
- Confirm mutual aid agreements
- Research applicable aid programs

Financing Implementation: Post-Disaster

- Use Damage Assessments to estimate impact to local revenue
- Project long-term effects of impacts
- Assess the capacity of local reserves
- Seek financial assistance
- Explore scaling back non-essential actions to prioritize staff time and resources



Including the Public in Implementation

“The success of any disaster recovery program is enhanced when the public is made aware of rebuilding priorities and kept informed of progress.”





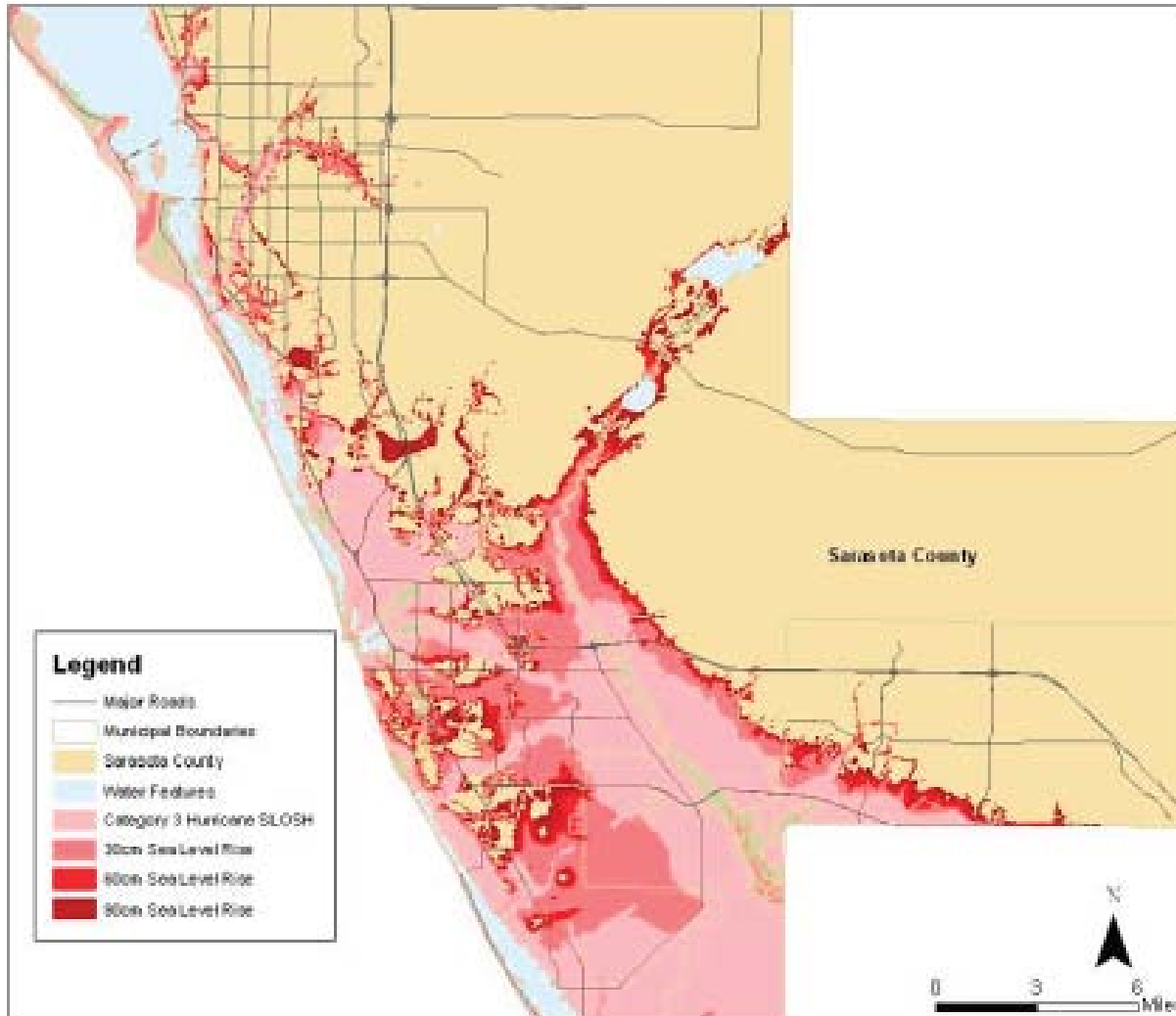
Post-Disaster Redevelopment Planning: Future work in Florida



Training

- Post-Disaster Redevelopment Planning : The Next Steps
- Online Training/Workshop Module for:
 - Emergency Managers
 - Planners
 - Public and Elected Officials

Sea Level Rise Adaptation



Statewide Long-Term Recovery Framework



**National Disaster
Recovery
Framework**

**Statewide Long-Term
Recovery Framework**

**Local Post-Disaster
Redevelopment Plan**



Post-Disaster Redevelopment Planning: Competitive Grant



Overview

- HMGP funds
 - Match 75%/25%
 - Reimbursement
- Maximum \$100,000
- Application Deadline: **Dec 6**
- Award Period: **January-December 31, 2011**

First Steps

- Schedule Board of County Commissioners approval for the project
- Optional letters of support
- Identify key stakeholders to provide additional help with proposal development
- Leverage other funding sources for plan development

Application

- Major Elements
 - Proposal
 - Scope of Work & Budget
- But Don't Forget...
 - General Information
 - Milestone Schedule

Proposal

- Describe how this plan will be developed over the next year
 - What are the community's primary goals?
 - What resources will you bring to the table?
 - What will the planning process look like?
 - Organization, Meetings, Activities, Exercises
 - Why is this plan needed?
- Make it yours...

Proposal Questions

- PDRP Coordinator
- Vulnerability Identification
- Local support
- Stakeholder and public participation
- Project approval
- 25% match
- Impact of plan
- Other funds

Scope of Work

- Action items of your proposal
 - Plan elements
 - Deliverables
 - Turned in to the State for review
 - Dates of submission
 - Don't save it all for the end
 - Budget
 - Justify, justify, justify

Scope of Work-Requirements

- Stakeholder group
- Public Participation
- Institutional capacity
 - Policies and procedures
- Vulnerability identification
- Issues and Actions
- Financial resources
- Communications strategy
- Implementation
- FINAL PLAN

Scoring

- Review Committee
- Scoring Rubric
 - Minimum requirements
 - 200 points
- Notification
 - 14 days
- Contract Negotiation
 - 30 days



Questions?

Julie Dennis, DCA
850-922-1825
julie.dennis@dca.state.fl.us

Emily Meyer, DEM
850-414-7768
emily.meyer@em.myflorida.com

Matt Preston, DCA
850-921-3791
matthew.preston@dca.state.fl.us