



SITUATION REPORT No. 14

Hurricane WILMA



The Unified Wilma Command

October 24, 2005 Published at 2000 Hours

State Emergency Operations Center Level: **1**

Operational Period: October 24, 2005 0700 Hrs. – October 24, 2005 1900 Hrs.

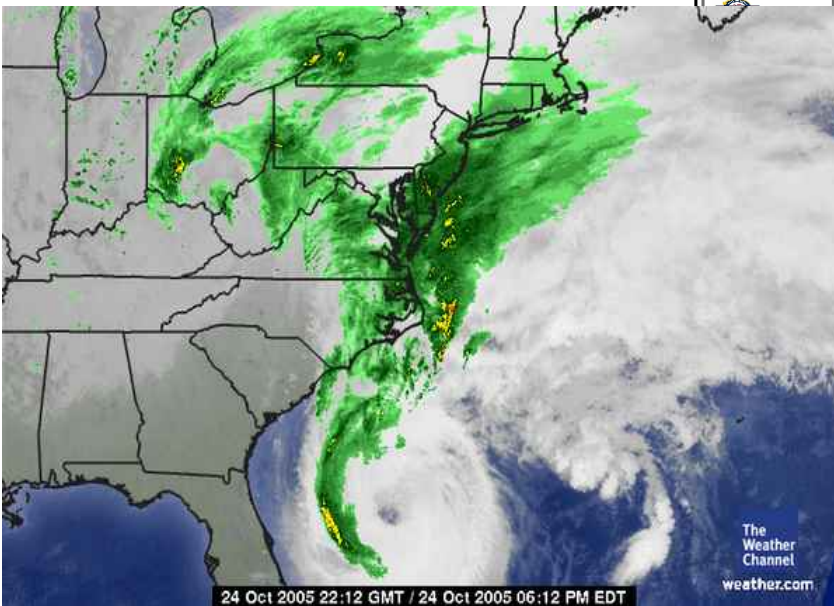
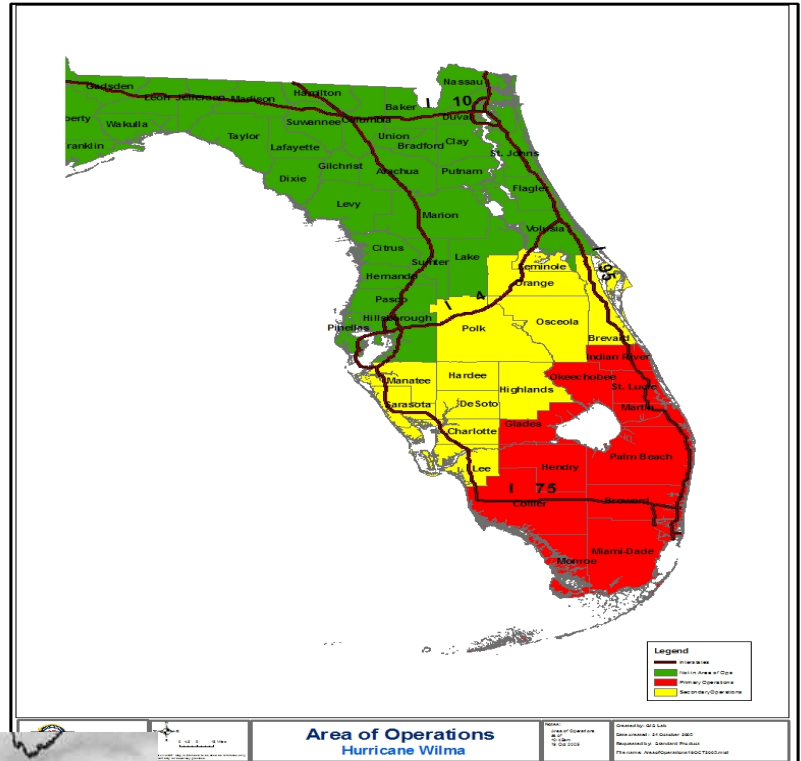
CURRENT SITUATION

The State Emergency Operations Center is currently at Level 1 activation as the Unified Wilma Command continues to prepare and respond to Hurricane Wilma.

WEATHER SUMMARY:

Wilma strengthens a little more while racing northeastward away from Florida. At 5:00PM all hurricane and tropical storm warnings for the Florida Peninsula including Lake Okeechobee and the Florida Keys have been discontinued. However, gale force winds continue in some areas especially along portions of the Florida west coast and the Florida Keys.

At 5:00 pm the center of Hurricane Wilma was located near latitude 29.0 north



longitude 77.4 west or about 180 miles north of Great Abaco Island in the northwestern Bahamas. Wilma is moving toward the northeast near 37 mph and a continued increase in forward speed is expected during the next 24 hours. Maximum sustained winds are near 120 mph with higher gusts. Wilma is a category three hurricane on the Saffir-Simpson scale. Some weakening is forecast during the next 24 hours but Wilma could remain a hurricane through much of the day Tuesday. Hurricane force winds extend outward up to 105 miles from the center and tropical storm force winds extend outward up to 260 miles. Storm surge should decrease tonight along the coastlines of southern

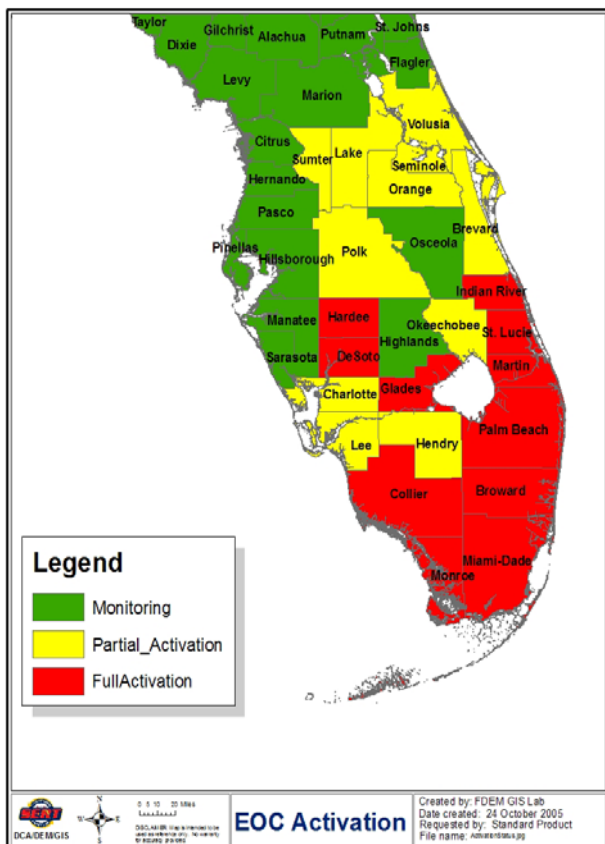
Florida including Lake Okeechobee and the Florida Keys.

CONSEQUENCES:

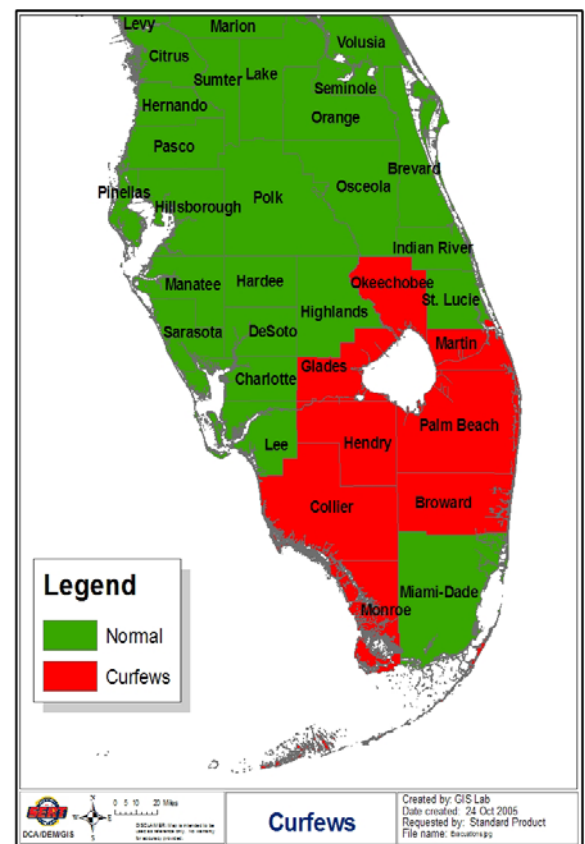
1. **Evacuation** – Several counties have issued evacuation orders. (see chart below)
2. **Sheltering** – Currently there are **71** shelters open with **15,233** evacuees with **1,786** Special Needs evacuees as of 1900 hours.(see updated county chart)
3. **School Closings** – Currently there are several counties with school closures. (see updated county chart)
4. **Boil Water Notices** – Boil water notices have been issued for the following: Collier, Pompano Beach, Plantation, Palm Beach and Tamarac.
5. **Fatalities and Injuries**—Currently there are 3 confirmed fatalities: Collier (2) and St. Johns (1).
6. **Currently the following counties have hotel availability:** Collier (**0 rooms**), Seminole (**500 rooms**), Osceola (1,000 rooms), Polk (1,138 rooms), Lee (37 rooms), Hillsborough (**2,243 rooms**), Pinellas (2,300 rooms), Indian River (500 rooms), Hardee (10 rooms), St. Lucie (20 rooms), Highlands (**120 rooms**), Glades (**12 rooms**), **Charlotte (20 rooms)**, Broward (**2,000 rooms**), Miami-Dade (**551 rooms**), Brevard (**2,500 rooms**), Hernando (10 rooms), Columbia (full), Marion (75-100 rooms) and Orange (9,400 rooms). (updates in bold 10/24/05)
7. **Power Outages:** Currently there are **3,551,167** residents without power due to damages caused by Hurricane Wilma. (as of 10/24/05 @ 1500hrs)
8. **Several counties have issued curfews:** Palm Beach (7:pm-5:am), Martin (7:pm-7am), St. Lucie (7:am-7pm) and Glades (Dusk to Dawn), Monroe county (11:00PM -7:00AM), Lee county (Bonita Springs and Sanibel 9:00PM to 9:00AM) and Brevard (Dusk to Dawn).

County Actions:

EOC ACTIONS



CURFEWS



County	EOC Level	LSE	Evacuations	Shelters	Government & School Closings
Area 7					
Monroe	Full	10/19/05	Mandatory evacuation of all mobile homes		Hospitals & Government offices & Schools closed 10/24/05
Miami-Dade	Full	10/22/05	Mandatory mobile home and parks, low lying flood prone areas on 10/23/05	6 shelters open with 521 evacuees	County closed 10/24/05
Broward	Full	10/22/05	Mandatory mobile home and parks 10/23/04	10 shelters open with 590 evacuees	Schools closed 10/24/05, significant government closed today/800,000 people w/o power/
Palm Beach	Level 1		Evacuation for mobile home and low-lying and substandard areas	17 shelters open with 5,300 evaueees	County offices & schools closed 10/24/05
Martin	Monitoring				
St. Lucie	Level 1	10/22/05	Mandatory evac barrier Islands, mobile and manufactured homes 10/23/05	4 general shelter & 2 Spn open @ 10/23/05	County offices & schools closed 10/24/05, FAU and Indian River Com. College closed on 10/24/05 Ft. Pierce city hall closed 10/24/05, community transit closed 10/24/05
Indian River	Level 1	10/20/05	Mandatory evacuation for mobile homes and voluntary extreme coastal areas and barrier islands @ 8am 10/23/05	4 general shelters will open @ 5:00PM 10/23/05 & 1 SPn open @ 3:00pm	Schools and government offices closed 10/24/05—Bridges—all Barrier Island bridges closes @ 6am 10/24/05
Area 6					
Collier	Level 1	10/20/05	Evac for areas west and south of US-41 includes Marco Island, Everglades City, Goodland, Chokolskee, Plantation Island, Isles of Capri Henderson Creek area, all coastal communities north to county line & Naples.	11 shelters open with 3,961 evacuees	Only the Courts closed on 10/24/05
Lee	Level 2	10/19/05	Mandatory evacuations 10/22/05 @ 12:00 for Barrier Islands, Ft. Myers Beach, Sanibel/Captiva Island, Bonita Beach, Pine Island & mh S. of Caloosahatchee River	9 General shelters 1 Spn open with 125 evacuees	School and Government 10/24/05
Hendry	Level 2	10/21/05	Voluntary evacuation on 10/22/05	4 shelters with 155 evacuees	
Charlotte	Level 2		Recommended mobile homes, travel trailers on 10/23/05 @ 10:am	3 General shelters open @3Pm	
Glades	Level 1		Mandatory mobile homes & low lying areas	7 shelters open with 111 evacuees	Schools closed 10/25/05
Sarasota	Partial	10/21/05	Evacuation orders lifted at 1pm 10/24/05	6 shelters open with 253 evacuees	Schools and government offices closed 10/24/05
DeSoto	Partial	10/20/05	Recommended Voluntary for mobile homes, vulnerable housing on 10/23/05	Spn shelters open @ 6:Pm general open @3:pm 10/24/05	Schools / county closed 10/24/05
Highlands	Level 2	10/20/05	Voluntary for mobile homes 10/23/04	closed General open with 38 evacuees	Schools and government offices closed 10/25/05
Okeechobee	Level 3	10/21/05	Mandatory evacuation for mobile homes and wood structures 10/23/05	3 shelters open 314 evacuees	Schools and government offices closed 10/24/05
Hardee	Partial	10/21/05	Evacuation 10/24/05 for low lying areas, RV's and substandard homes	General open @4pm 10/23/05	Schools closed 10/24/05 and county offices open 10/24/05
Manatee	Monitoring	10/20/05	Voluntary evacuation of mobile homes	2 General open with 28 evacuees	Schools, Courts , Government 10/24/05
Area 5					
Brevard	Full		Mandatory evacuation mh manufactured homes	5 general and 7 spn open evacuees	Some schools/ government offices and courts closed 10/24/05, Space Coast Area Transit cancelled
Volusia	Level 2	10/23/05			Schools/ government offices Daytona Bch, Bethune Cookman, Stetson Univ, DeBary 10/24/05
Orange	Level 2				Schools closed 10/24/05
Osceola	Partial	10/23/05		3 General & 1 SPn	Schools/ government offices
Lake	Level 2			1 combined	Schools closed 10/24/05
Sumter	Level 2		Voluntary for mobile homes and low lying areas	Open 1 Spn @ 1PM and General @ 6PM	Schools closed 10/24/05
Marion					Schools closed 10/24/05
Lake	Level 2				Schools closed 10/24/05
Polk	Monitoring	10/21/04			Schools closed 10/24/05

Area 4					
Seminole	Monitoring		Voluntary evac of low lying and mh manuf homes @ 2:pm 10/23/05	Closed @ 3pm Spn & 2 General w/ pet friendly	Schools and government offices open on 10/25/05
Pinellas	Level 3				Schools closed 10/24/05
Hernando	Level 2				Schools closed 10/24/05
Hillsborough	Partial	10/20/05			Schools and government offices closed
Polk	Monitoring	10/21/05			Schools closed 10/24/05
Area 3					
Levy	Monitoring				

County Park Closing

PARKS	DISTRICT	COUNTY	DAY USE	CAMPING
Lake Kissimme	3	Polk	Closed	Closed
Kissimmee Prairie	3	Okeechobee	Closed	Closed
Indian River Lagoon	3	Brevard	Closed	NA
St. Sebastian	3	Indian River	Closed	Na
Sebastian Inlet	3	Brevard	Closed	closed
Catfish Creek	3	Polk	Closed	Closed
Tosohatchee	3	Orange	Closed	Na
Cayo Costa	4	Lee	Closed	closed
Gasparilla Island	4	Lee	Closed	Na
Koreshan	4	Lee	closed	Closed
Lover's Key	4	Lee	Closed	Na
Highlands Hammock	4	Highlands	Closed	Closed
Myakka	4	Sarasota	Closed	closed
Paynes Creek	4	Hardee	Closed	Na
Stump Pass	4	Charlotte	Closed	Na
Don Pedro	4	Charlotte	Closed	na
Mound Key	4	Lee	Closed	Na
Charlotte Harbor	4	Lee	Closed	Na
Estero Bay	4	Lee	Closed	Na
Wiggins Pass	4	Collier	Closed	Na
Collier-Seminole	4	Collier	Closed	Closed
Fakahatchee Strand	4	Collier	Closed	Na
Oscar Scherer	4	Sarasota	Closed	Closed
Lake June-in-Winter	4	Highlands	Closed	Na
Key Largo Hammock	5	Monroe	Closed	Na
John Pennekamp	5	Monroe	Closed	Closed
Windley Key	5	Monroe	Closed	Na
Lignumvitae Key	5	Monroe	Closed	Na
Indian Key	5	Monroe	Closed	Na

County	Damage Reports
Brevard	Max Brewer Crossway Bridge closed between Titusville and Playlinda Bch due to possible structural damage from boat impact.
Broward	EOC roof leaks/critical facilities on generator /structural damage to school bd. Corp./numerous trees down and roads blocked/ Watermain break. Roof damages/ 800 mobile homes severely impacted or destroyed/Roads blocked/
DeSoto	Water intrusion in buildings
Charlotte	Court house has significant damage/SR31 flooded 4 miles N of Lee County line
Glades	Jail House and Court House has significant Roof Damage/roof lost on EMS Station in Morhaven/ EOC on Generator
Hardee	
Hendry	EOC Lost Power and Generator Failed/Normal Debris and Damage, US-27 blocked in Clewiston due to debris & water
Highlands	US-98 (SR721) flooded, tree in WB lane
Lake	
Indian River	EOC Comm Tower destroyed - fell onto roof, moving to IRC Sheriff's Office. New Temp Phone # 772-569-2338
Lee	Lehigh Regional Hospital lost part of roof windows and water entering bldg / South Trail Fire Station lost par Widespread Outages /148K without Power/ EOC and 2 Shelters on Generator Power of roof/, SR31 18600 blk. Flooded / SR78 E. of I-75 flooded
Manatee	
Marion	
Martin	North Hospital on Gen Power/Downed Power Lines/ EOC on Generator Power / Emergency Vehicle Storage Bldg. in Indiantown missing roof / 80% lift stations inop./Stuart lift station are non functional / 15 roads blocked by debris
Miami-Dade	
Monroe	Marathon under 4-5 Feet of storm tide/Key West Public Safety Bldg inaccessible due too high water/Marathon AP usable - no Nav Aids/ KW airport not operable/ Mariners and Fishermans Hospitals on Gen Power/ Lower Keys Hospital not accessible/Storm Tide washing over US-1 @ 113mm to 115mm and 48mm to 59mm/ US-1 Passable at Marathon/ US1 under water from Summerland to Key West/ No southbound entry to the keys/Coppit and Big Pine Key debris and water on US1/. Low Water pressure due to damage to aguaduct at 7 Mile bridge/water main break at Key West. Damage Assessment underway/ 60% city is flooded in Key West/
Palm Beach	UPS only - power switch failed/ 2 shelters w/out elect/ 2 water mains broken/Heavy road debris and non working traffic signals/washout sinkhole on I-95right side northbound lane/ 89 lift stations lost power/ north SCADA system out of service
Seminole Tribe	Hollywood Reservation needs water.
St. Lucie	85% + power outages(FPL has 122k out & Ft. Pierce Utilities has 24k out)

STATE ACTIONS:

- The SEOC is activated at a Level 1 and is operational 24 hours
- Conference calls with counties conducted at 1115 hrs and 1715 hrs daily
- The State Emergency Response Team continues to monitor the progress of Hurricane Wilma
- ESF 5 requested and activated the State Evacuation Team
- SEOC briefings are held twice daily
- The Florida Emergency Information Line (FEIL) line has been activated 1-800-342-3557

Executive Orders:

Governor Bush has executed the following Executive Order(s):

EXECUTIVE ORDERS		
EXECUTIVE ORDER NUMBER	DATE SIGNED	PURPOSE
05-219	19 October 2005	State of Emergency – Hurricane Wilma

PERSONNEL DEPLOYMENTS (updated 10/22/05)		
Type of Personnel	Location of Deployments	Date of Deployments
SERT LIAISONS	Collier (4), Lee (6), Broward (1), Charlotte (3), Monroe (5), Miami-Dade (4), Palm Beach (2), Okeechobee (4), Martin (3), St. Lucie (3), Glades (2), Highlands (1),	10/18-23/05
RECON	Collier (1), Monroe (2)	10/20/05
FI National Guard	Monroe (1), Miami-Dade (2), Broward (2) Collier (1),	10/21/05
SERT IMT Green Team	Collier (8)	10/23/05
SERT IMT Red Team	Highlands (10)	10/24/05

Federal Declarations:

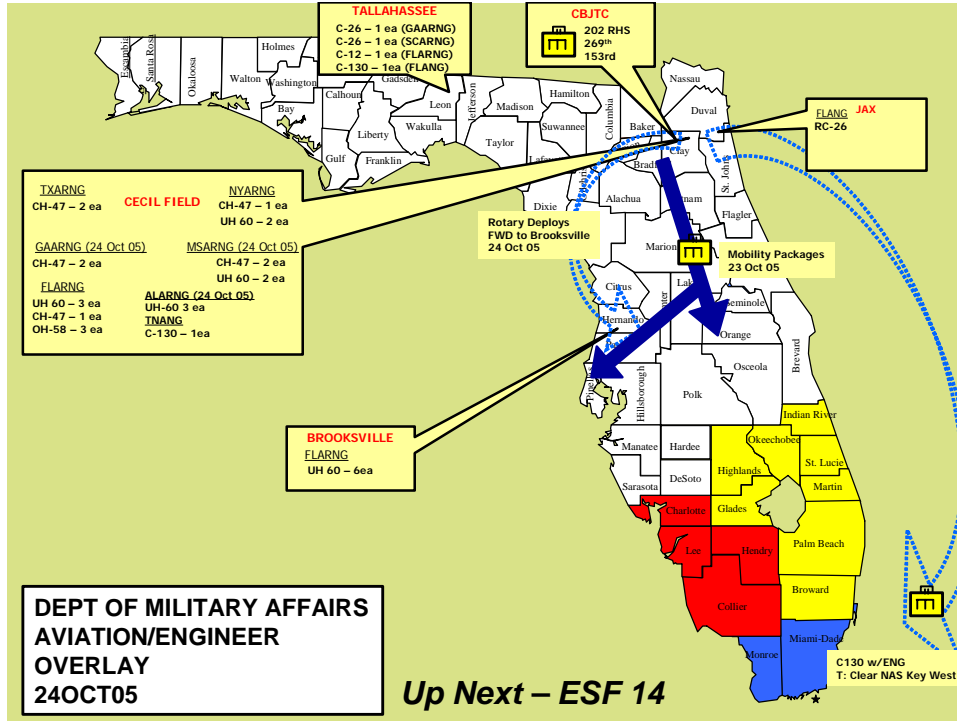
FEDERAL DECLARATIONS		
TYPE OF DECLARATION	DATE OF ACTION	PURPOSE
Presidential FEMA-1609-DR	October 24, 2005	Hurricane Wilma

SERT REPORTS:

Operations Support Branch:

- Continue to receive, route, track and ensure completion of all requests made to the State Emergency Response Team

ESF# -13 Military Support



Emergency Services Branch:

ESF#4 & #9 : Fire Fighting & Search & Rescue

- Southwest Branch - Staged Florida State Fair Grounds - Tampa (Hillsborough Co.) 10/23/2005 @ 1600 hrs
- FEMA Teams
- Tennessee Task Force 1 – Type III - in Lee county.
- Virginia Task Force 2 Type III - in Lee
- Task Force 3 – Type I with Engine Strike Team (approx. 95 personnel)
- Task Force 5 – Type II with Engine Strike Team (approx. 55 Personnel)
- Task Force 8 – Type III (22 personnel)
- Engine Strike Team (20 personnel) attached to TN Task Force 1
- FWC Water Resources
- DOF Gold IMT
- 2 SAR Branch Managers from TF3 and TF4
- Central Branch - Staged Citrus Bowl - Orlando (Orange Co.) 10/23/2005 @ 20:00
- Task Force 4 – Type II with Engine Strike Team (approx. 55 personnel)
- MARC Units
- Staged Volusia County Fairgrounds – 10/23/2004 @ 16:00

- Task Force 9 – Type III – Engine Strike Team (approx. 45 personnel)
- Southeast Branch
- Staged in Miami Metro Area (Dade County)
- FEMA Teams
- Florida Task Force I - Type I
- Florida Task Force II – Type I
- On Alert: 10/23/2005 by 2000 hrs.
- Bradenton Fire Type II Water Rescue Team (approx. 8 personnel)
- FEMA Teams
- Virginia – Task Force 1 Type III
- Maryland – Task Force 1 Type III

ESF #8: Health & Medical:

- Special Needs Sheltering as of 2:50 PM 10/24/04
- Total – 27 Shelters with 2,164 clients
- Health Care Facilities
- Hospitals: 21 facilities without power (20 full generator power (HVAC), 1 minimal generator power (HVAC); 5 water systems out; 3 with major roof damage

Dade

- Homestead Hospital – on generator
- Larkin Hospital – on generator

Hendry

- Evacuation of Hendry Regional Hospital. Sustained roof damage, supplies soiled

Martin

- Martin Memorial Hospital's North and South Campuses are running on generator power

Palm Beach

- 2 hospitals with major structure damage
- Bethesda - On generator, operational
- West Boca - Significant damage, no generator, may not be operational, manually ventilating patients in the neonatal ICU, handling patient transfers locally
- Delray - Significant damage, windows blown out but operational
- JFK - On generator, evacuated sixth floor due to water intrusion but operational
- Lake Worth Towers, 195 residence that require assistance
- Pre-Storm Evacuated Facilities as of 9:00 AM 10/24/05
- Adult Family Care Facilities – Total 4 Facilities Evacuated and 18 Residents
- Assisted Living Facilities – Total 20 Facilities Evacuated and 402 Residents
- Hospitals – Total 4 Facilities Evacuated and 24 Patients
- Intermediate Care Facilities/DDs - Total 20 Facilities Evacuated and 207 Residents
- Nursing Homes – Total 8 Facilities Evacuated and 717 Residents
- Total of 56 Facilities and 1,368 Residents
- NDMS is pre-positioning 3 of the 5 (NY-2, TN-1 and AL-3) Strike Teams in the Miami area for anticipated post-storm deployment to the Keys
- Communications
- Dr. Francois called out to 5 Haitian radio stations for live interviews on storm prep and CO message
- Water bottlers are being identified and contacted to see if they will include a health message on their label
- Epidemiology

- Poison Control Surveillance is up and running
- A team leader has been identified and put on stand-by for an epi-strike team
- Environmental Health
- Coordinating with DEP (ESF 17) to determine environmental needs concerning drinking water and waste water

ESF #10: Environmental Protection & Hazardous Materials

- 2 HazMat Assessment teams moving into west coast impact area to evaluate hazardous materials facilities
- 2 HazMat Assessment Teams staged at Ormond Beach in preparation for deployment Tuesday.
- Monitoring water levels in phosphate gyp stacks
- FlaWARN water facility teams mobilizing to west Florida impact area to assist getting water & wastewater facilities running
- USCG providing HH60 platform to move ESF8 medical strike team into Key West
- Monitoring Florida D7 port status

ESF#16: Law Enforcement:

- 608 State and Local Law Enforcement officers (via Florida Police Chiefs and Florida Sheriffs Association) have been deployed to storm impacted areas.

Infrastructure Branch:

ESF#1 & 3: Public Works & Transportation:

- Responders may platoon down to Key West traveling down the bridges spaced apart 200 feet
- Only legal vehicles weighing less than 80,000 lbs. each
- Limit trucks on bridges to one direction only for Keys bridges

District 1

- Collier -- 100% of signs & signals are damaged
- Glades, Hendry, Okeechobee, Lee "significant damage" but still assessing
- 98% of state roads in D1 are passable except in Collier county

District 4

- Significant sign and signal damage
- Power outages in the district, including district offices and EOC
- Since the district is still experiencing gale force winds, they have not been able to do damage assessments

- All State Roads in District Five are open:

The only significant road closure : in the District is the Max Brewer Bridge on CR 406 in Brevard County (over the IntraCoastal Waterway from Titusville to Playalinda Beach.) A boat slammed into piling, damaging some. Repairs will be necessary before it can reopen. It is a county-maintained bridge, but they will probably seek our funding assistance. There was minimal signal damage throughout the District, largely in Brevard County. There is some local road flooding in Brevard and Volusia County, but no significant traffic impact.

- Significant sign and signal damage
- Still doing damage assessment
- Reports of some road flooding

District 7

- Minor street flooding
- Significant damage to the Turnpike system service plazas
- Tractor Trailer roll-over MP 13 SB. Left lane open. FHP notified TMC
- Contacted Open Roads Recovery to respond under emergency contract. Open Road Recovery is enroute to scene
- Tractor Trailer roll-over at the SB entrance ramp to the Fort Pierce/Port St. Lucie service plaza
Traffic is able to drive around crash and enter service plaza
- Fort Pierce service station significantly damaged, out of service
- Multiple reports of light poles down near the Fort Pierce interchange
- 450 MHz radio system (Wrecker, Road Ranger radio) not operational
- This is hindering efforts between FHP, Road Rangers and TMC
- Pompano service station reporting two tractor trailers blown over within Pompano Service Plaza parking lot. One minor injury, fuel leaking from one tractor. FHP has been made aware, but not able to respond due to weather conditions
- Snapper Creek service station has turned off pumps due to debris and portable VMS board being blown towards pump islands
- Lift station at milepost 71 and Sawgrass automated report - no electricity
- Lift station at milepost 65 automated report - no electricity
- Sunshine Skyway Bridge was closed to vehicles between 10 a.m. and 11 a.m., now reopened.
- West Palm Beach Restaurant closed due to significant roof damage
- Snapper Creek, Pompano and West Palm Beach service stations closed to business until post-storm
- Pompano service plaza stopping restaurant service until post-storm
- Pompano service station reporting two tractor trailers blown over within Pompano Service Plaza parking lot. One minor injury, fuel leaking from one tractor. FHP has been made aware, but not able to respond due to weather conditions
- Snapper Creek service station has turned off pumps due to debris and portable VMS board being blown towards pump islands
- Lift station at milepost 71 and Sawgrass automated report - no electricity
- Lift station at milepost 65 automated report - no electricity
- Sunshine Skyway Bridge was closed to vehicles between 10 a.m. and 11 a.m., now reopened
- West Palm Beach Restaurant closed due to significant roof damage
- Snapper Creek, Pompano and West Palm Beach service stations closed to business until post-storm
- Pompano service plaza stopping restaurant service until post-storm

ESF#12 Energy:

Fuel Energy

- 17 Fuel Tankers Mobilized in Support of USAR and Recovery
- Key West, 1 tanker (9000 gallons) ½ Diesel ½ Unleaded, Tracker 160
- White Springs State Farmers Market, 1 tanker (9000 gallons) Diesel
- Tampa, 10 Tankers (9000 gallons each) ¼ Unleaded, ¾ Diesel,
- Tampa, 5 tankers (2500 to 4000 gallons) on hold, Tracker 770

Bulk Fuel in Ports

- Florida normally uses 25 million gallons per day. Florida tries to keep at least a 4 day supply available (100 million gallons)
- 215 million gallons, mg, available now. 9 day supply
- 151 million gallons available in 3 days. 6 day supply

- 216 million gallons available in 9 days. 9 day supply
- Result - average of 210-220 million gallons available per day for the next 9 days.

Retail Outlets

- Locations reporting having plenty of fuel
- I-4, I-95, I-75 corridors and FL Turnpike have plenty of fuel

Electric Energy Total Outages - 3,475,370

- FPL - 3,232,200 (74% of their customers out)
- Progress Energy - 31,599 (2% of their customers out)
- Municipalities - 62, 351(5% of their customers out)
- Co-operatives - 149,229 (16% of their customers out)
- ETR 's Estimated times of restoration are not available yet

ESF #2 – Communications

- Currently have cell, satellite, and analog phones, FRS radios (very short range) and air cards on standby
- 38 sat phones activated: 22 deployed, 194 cell phones deployed
- Contacted telecom industry for standby in their local areas
- Prepared to support LSA and other SERT temp. facility comm. support
- Activating conference call bridge lines
- Assisting with cell and satellite phone requests
- FEIL telecom is operational

Human Services Branch:

ESF #6- Mass Care

- 20 counties have 101 shelters open with 21,985 shelterees
- There are and additional 20 shelters in 12 counties on standby
- 74,025 meals served to date
- 11 Kitchens, to be staffed by the Southern Baptist Association, are being deployed as sites are identified. One will deploy to Naples and one to Clewiston
- 33 ERVS are in state and are being deployed as sites are identified. 100 Budget Trucks on standby
- 1 ARC, 1 TSA and 2 State ESF 6 reps are being deployed to Key West to evaluate Mass Care needs in that county

ESF #11- Food and Water

- 100 trucks of water being convoyed to Lakeland LSA
- 100 trucks of ice being convoyed to Lakeland LSA
- 142 trucks of Water and 122 trucks of Ice in storage to be uploaded as needed
- 4 truckloads of baby food on site in Warehouse ready for deployment to LSA once it opens
- Placed order with USDA for canned meats
- Over 90,000 cases of USDA foods on hand in state contracted warehouse

ESF #15- Volunteers & Donations:

- Contacting county ESF 15 coordinators and local volunteer managers

- Submitted request for 3 EMAC Vol & Don specialists
- Submitted ARF for AmeriCorps / NCCC tasking
- Securing staffing for Vol & Don Hotline, opening Tuesday morning
- Coordinating with Convoy of Hope, Ch. of Scientology and Compassion Alliance on vol teams for PODS
- Messaging to media about C.A.R.E., including updated public information on website

ESF #17- Agriculture & Animal Protection:

- ESF17 Incident Management Team activated and establishing ESF17 Incident Command Post
- Contacting county ESF17 coordinators and industry representatives for damage assessments
- State Agricultural Response Team (SART) partner agencies assisting with damage assessments and response efforts
- University of Florida, College of Veterinary Medicine
- University of Florida, IFAS Extension
- USDA/APHIS/Veterinary Services
- USDA/Wildlife Services
- USDA/Farm Service Agency
- Florida Animal Control Agency (HSUS)
- Humane Society of the United States (HSUS)
- Disaster Animal Response Teams (DART)
- Emergency Animal Rescue Service (EARS)
- Florida Cattlemen's Association
- Southeast Milk Incorporated
- Florida Association of Kennel Clubs

Logistics Branch:

- NAS Jax move to Palm Beach (start move by 1400 hrs)
- 100 water uploading
- 100 ice uploading
- 58 food uploading
- Therefore 258 trucks moving from Jax
- 4 cots 2 blankets being pushed from Alabama
- White Springs move resources to Lakeland (start move by 1400 hrs)
- 100 water uploaded
- 100 ice uploaded
- 2 food uploaded
- Therefore 202 trucks moving from White Springs

EMAC: In-State Mutual Aid Summary

- Six (6) Incident Management Teams
- Monroe County EOC (Marathon) - Tampa Bay IMT
- City of Key West - City of Tallahassee IMT
- Lee County - Northeast Florida IMT
- Martin County - Northwest Florida IMT
- Hendry County - FDEM Red Team
- Palm Beach County - State of Virginia IMT (A-Team Working Mission)
- All IMTs with the exception of the Palm Beach County Team will arrive at their destinations tomorrow afternoon to support EOC Operations in their respective counties/cities.

- Total ARFs (Requests for Federal Assistance): 28
- EMAC Summary
- 31 total missions
- 26 Approved
- 5 Canceled
- 5 Pending
- Total cost (National Guard and Civilian): \$5,334,812.50

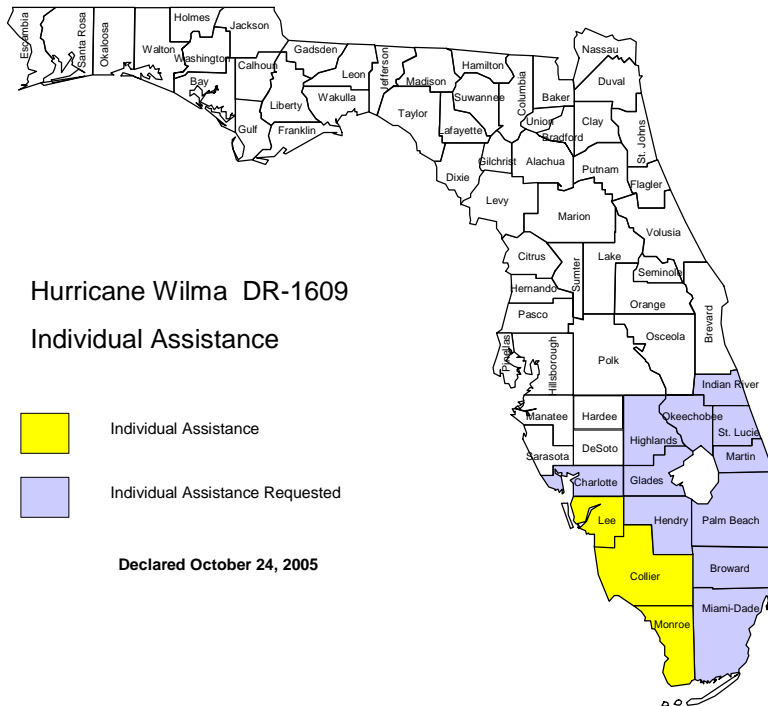
Finance & Administration:

- Purchasing and renting equipment and supplies
- Initiated purchase order for catering and showers at West Palm Beach LSA and Lakeland LSA through OK's Cascade Company
- Purchasing tarps to be shipped to the South Florida Fairgrounds in West Palm Beach
- Have coded and routed Personnel Actions for Community Response Strike Teams; waiting on personnel approval
- Assisting with deployment of staff
- Continuing to track our agency's costs

Public Information:

- Continuing to disseminate preparedness and safety messages
- Conducting daily press briefings

Recovery:



- Working in conjunction with Ops Support and Field Operations in deploying and managing SERT Liaisons; currently there are 25 SERT Liaisons in 14 counties
- PDA Roster complete for PA and IA
- DRC Manager identified
- Declaration letters drafted and awaiting action

Information & Planning Section: Situation and Flash reports are issued as needed. Counties are reminded to email their Situation Reports to esf5@dca.state.fl.us

Florida Division of Emergency Management Contact Information

Planning Section E-Mail Address: esf5@dca.state.fl.us

Internet: <http://www.floridadisaster.org>